

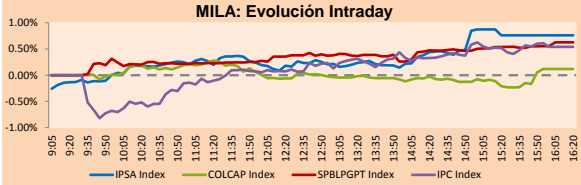
PULSO BURSÁTIL

Lima, January 26, 2018

MILA

Main Indices	Close	1 D	5 D	1 M	YTD	Market Cap. (US\$ bill)
▲ IPSA (Chile)	5,855.67	0.76%	-0.01%	6.18%	5.23%	232.70
▲ IGPA (Chile)	29,413.50	0.67%	0.04%	6.01%	5.12%	268.08
▲ IGBC (Colombia)	12,342.43	0.20%	3.65%	9.41%	7.44%	119.62
▲ COLCAP (Colombia)	1,590.86	0.24%	2.49%	6.44%	5.02%	121.56
▲ S&P/BVL (Perú)*	21,380.43	0.63%	2.06%	8.98%	6.96%	112.47
▲ S&P/BVL SEL (Perú)	389.70	0.90%	1.18%	7.77%	5.89%	90.17
▲ S&P/BVL LIMA 25	32,324.68	0.39%	1.05%	7.68%	4.96%	104.39
▲ IPC (México)	51,064.11	0.54%	2.78%	5.42%	3.49%	326.25
▲ S&P MILA 40	797.47	0.77%	2.08%	10.70%	9.38%	341.55

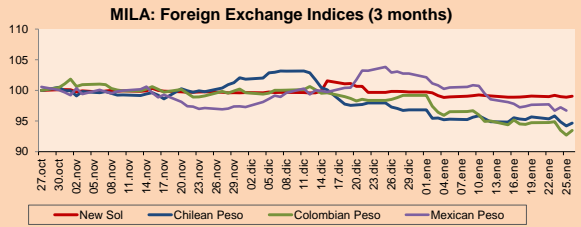
* Market Cap. Of the last price Legend: Variation 1D: 1 day, 5D: 5 days, 1M: 1 Month, YTD: Var%12/31/17 to date



Source: Bloomberg

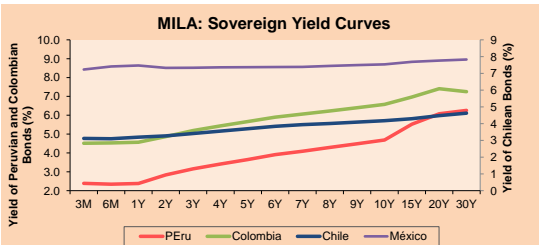
Currency	Price	1D*	5D*	30 D*	YTD*
▲ New Sol (PEN)	3,2153	0.17%	-0.03%	-0.79%	-0.69%
▲ Chilean Peso (CLP)	601.68	0.48%	-1.07%	-2.47%	-2.23%
▲ Colombian Peso (COP)	2,813.05	0.81%	-1.34%	-5.44%	-5.79%
▼ Mexican Peso (MXN)	18.51	-0.53%	-0.70%	-6.01%	-5.87%

*Legend: Variation 1D: 1 day, 5D: 5 days, 1M: 1 Month, YTD: Var%12/31/17 to date



Base: 27/10/17=100 Source: Bloomberg

Instrument	Currency	Price	Bid Yield (%)	Ask Yield (%)	Duration
PERU 4.125 08/25/2027	USD	108.193	3.15	3.10	7.87
PERU 7.125 03/30/19	USD	105.902	2.08	1.88	1.10
PERU 7.35 07/21/25	USD	128.913	3.03	2.97	6.03
PERU 8.75 11/21/33	USD	157.9	3.85	3.82	10.05
PERU 6.55 03/14/37	USD	134.99	3.95	3.92	11.57
PERU 5.625 11/18/2050	USD	127.573	4.10	4.08	16.86
CHILE 2.25 10/30/22	USD	97.99	2.74	2.67	4.46
CHILE 3.875 08/05/20	USD	103.572	2.45	2.35	2.36
CHILE 3.625 10/30/2042	USD	99.955	3.64	3.61	16.28
COLOM 11.75 02/25/20	USD	118.783	2.51	2.27	1.82
COLOM 11.85 03/09/28	USD	169.256	3.64	3.58	6.82
COLOM 10.375 01/28/33	USD	158.5	4.91	4.77	9.19
COLOM 7.375 09/18/37	USD	134.647	4.68	4.64	11.48
COLOM 6.125 01/18/41	USD	121.395	4.62	4.59	13.34
MEX 4 10/02/23	USD	103.652	3.31	3.27	5.02
MEX5.55 01/45	USD	112.215	4.755	4.73	14.72



Source: Bloomberg

Equity	Exchange	Amt.	Price	▲%
Largest gains				
AMZN	Lima	USD	1401.80	14.48
ETNAI1	Lima	PEN	1.85	8.82
QQQQ	Lima	USD	170.15	8.79
AUSTRAC1	Lima	PEN	1.55	7.64
Per Turnover	Exchange	Amount (US\$)		
IAM	Santia.	130,862,618		
SQM-B	Santia.	22,587,322		
FALABELLA	Santia.	11,196,388		
ECOPETROL	Colomb.	11,813,917		
CENCOSUD	Santia.	9,132,472		

Largest losses	Exchange	Amt.	Price	▼%
GLORIAI1	Lima	PEN	6.05	-6.92
GRAMONC1	Lima	PEN	1.81	-6.70
HIPERMARC	Santia.	CLP	7.20	-2.70
SQM-B	Santia.	CLP	33482.00	-2.67
Per Volume	Exchange	Volume		
BSANTANDER	Santia.	72,419,123		
IAM	Santia.	68,466,740		
VAPORES	Santia.	50,349,892		
ORO BLANCO	Santia.	48,655,428		
NORTEGRAN	Santia.	22,206,444		

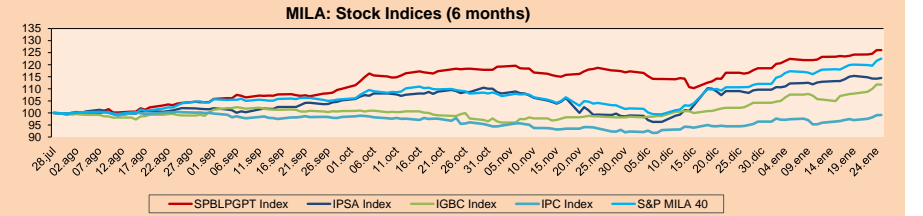
MILA

Peru: The General Index of the BVL of Peru ended today's session with a positive return of +0.03%. The index maintains a cumulative positive annual trend of +7.04% in local currency, while the adjusted return to foreign currency is +7.79%. Then, the S&P/BVL Peru SEL obtained a positive result of +0.90%, while the S&P/BVL LIMA 25 grew +0.39%. The spot PEN reached S/3.2106.

Chile: The IPSA index ended the day with a positive result of +0.76%. The sectors of the index with the most positive results were Energy (+2.23%) and Telecommunications Services (+1.93%). On the other hand, the values with the most bullish results were Colbún SA (+3.36%) and Banco de Crédito e Inversiones SA (+2.79%).

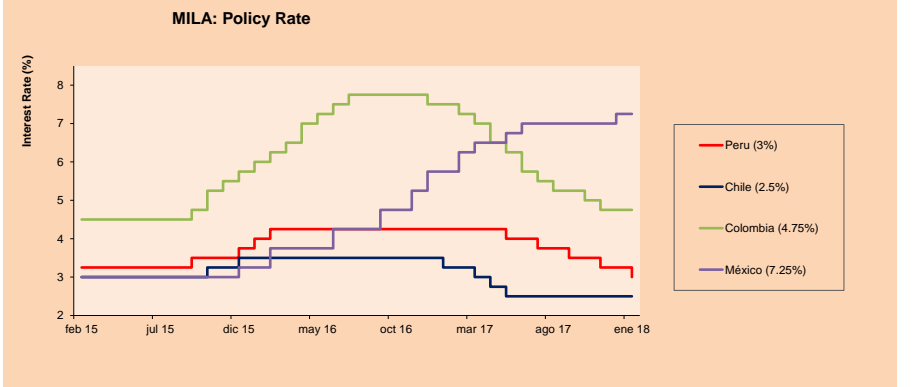
Colombia: The COLCAP index closed the session with positive results of +0.24%. The sectors with higher yields were Industrial (+1.15%) and Finance (+0.55%). In addition, the stocks with the highest yields were Promigas SA (+2.47%) and BanColombia SA (+1.70%).

Mexico: Mexico's IPC index closed today's session with a positive return of +0.54%. The sectors of the index that generated the most positive returns were Health (+3.67%) and Finance (+2.47%). Finally, the stocks with the highest yields were Grupo Financiero Banorte SAB de CV (+3.70%) and Genomma Lab SAB de CV (+3.67%).



Base: 31/07/17=100 Source: Bloomberg

ETFs	Curr.	Close	1D	5D	30 D	YTD	Exchange
▲ iShares MSCI All Peru Caped Index Fund	USD	44.31	0.68%	1.89%	9.46%	8.13%	NYSE Arca
▲ iShares MSCI Chile Capped	USD	56.12	0.68%	0.81%	8.55%	7.59%	BATS
▲ Global X MSCI Colombia	USD	16.21	-0.49%	6.30%	12.73%	12.28%	NYSE Arca
▲ iShares MSCI Mexico Capped	USD	54.07	1.10%	3.03%	11.48%	9.70%	NYSE Arca
▲ iShares MSCI Emerging Markets	USD	52.08	1.38%	3.25%	11.81%	10.53%	NYSE Arca
▲ Vanguard FTSE Emerging Markets	USD	50.98	1.33%	3.09%	12.12%	11.04%	NYSE Arca
▲ iShares Core MSCI Emerging Markets	USD	62.69	1.38%	3.13%	11.49%	10.18%	NYSE Arca
▲ iShares JP Morgan Emerging Markets Bonds	USD	65.47	0.88%	2.11%	8.70%	7.75%	BATS
- Morgan Stanley Emerging Markets Domestic	USD	8.24	0.00%	1.48%	6.74%	7.01%	New York



Source: Bloomberg

Capital Market Laboratory Coordinator: Economist Bruno Bellido Anicam
Support: Kaori Olulo, Jairo Trujillo, Mario Villar
e-mail: pulsobursatil@ulima.edu.pe
facebook: www.facebook.com/pulsobursatil.ul
Phone number : 4376767 Anexes: 35340 - 35310

PULSO BURSÁTIL

WORLD

Table with columns: Main Indices, Close, 1 D*, 5 D*, 1 M*, YTD*, Market Cap. (US\$ Mill.)

Equity

Table with columns: Wall Street (Stocks from S&P 500), Largest gains, Curr., Price, Exchange, Largest losses, Curr., Price, Exchange

Global Overview

United States:

The US stock market ended the day with positive results, being driven by the US growth rate of 2.6%. In greater detail, consumers and businesses stimulated the economy at a growth rate of 2.6%, in the last 3 months of 2017...

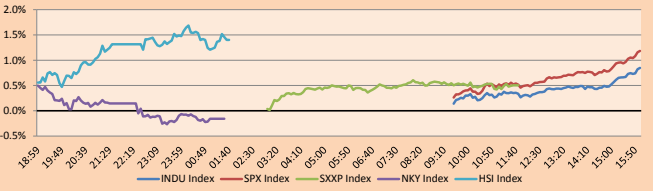
Europe:

The European stock market ended the day today with positive results among its main indices. This was because investors ignored the continued rise in the euro, as well as the pound sterling...

Asia:

The Asian stock market closed with mixed results among its main indices. Regional shares were affected by rebound in US stocks. In Hong Kong, the "Hang Seng" benchmark index closed higher thanks to the strong results in its banking shares...

Global Markets: Intraday Evolution (var %)

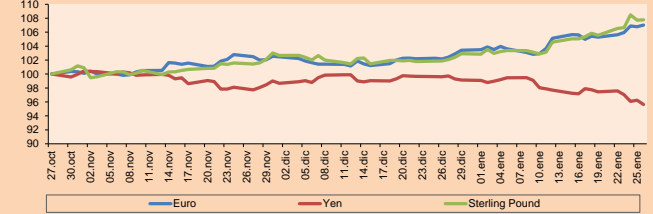


Source: Bloomberg

Table with columns: Currency, Price, 1 D*, 5 D*, 1 M*, YTD*

*Legend: Variation 1D: 1 Day; 5D: 5 Days; 1M: 1 Month; YTD: Var.% 12/31/17 to date

Foreign Exchange Indices (3 months)

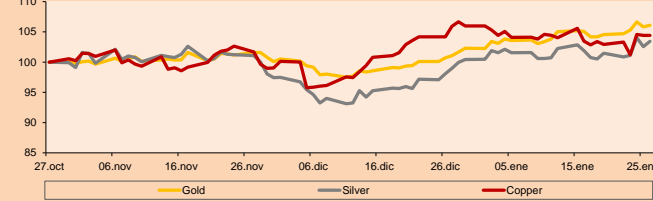


Base: 27/10/17=100
Source: Bloomberg

Table with columns: Commodities, Close, 1 D*, 5 D*, 1 M*, YTD*

*Legend: Variación 1D: 1 Día; 5D: 5 Días; 1M: 1 Mes; YTD: Var.% 31/12/17 a la fecha

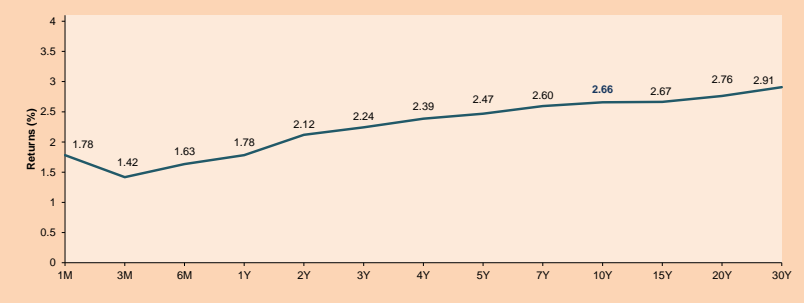
Principal Metals Index (3 months)



Base: 27/10/17=100
Source: Bloomberg

Table with columns: ETFs, Curr., Close, 1D, 5D, 30 D, YTD, Exchange

USA Treasury Bonds Yield Curve (%)



Source: Bloomberg

Capital Market Laboratory Coordinator: Economist Bruno Bellido Anicama
Support: Kaori Olulo, Jairo Trujillo, Mario Villar
e-mail: pulsobursatil@ulima.edu.pe
facebook: www.facebook.com/pulsobursatil.ul
Phone number : 4376767 Anexos: 35340 - 35310



PULSO BURSÁTIL

LIMA

Stocks

Ticker	Currency	Price	1D*	5D*	30D*	YTD*	Frequency	Volume (US\$)	Beta	Dividend Yield (%)	Price Earning	Market Cap. (M US\$)	Economic Sector*	Index Weight
▲ ALICORC1 PE**	S/.	11.64	0.26%	2.11%	10.54%	9.81%	100.00%	507,441	0.95	1.20	24.42	3,088.87	Industrial	3.53%
▲ ATACOCB1 PE**	S/.	0.72	1.41%	2.86%	9.09%	5.88%	100.00%	136,216	2.36	0.00	-	224.53	Mining	1.02%
- BACKUS11 PE**	S/.	18.40	0.00%	0.00%	0.00%	-0.05%	60.00%	719	0.43	0.00	5.34	8,983.28	Industrial	0.82%
▲ BAP PE**	US\$	235.17	0.20%	2.50%	13.99%	13.06%	100.00%	775,928	1.03	3.65	-	18,688.20	Diverse	5.82%
▲ BVN PE**	US\$	16.20	3.12%	7.64%	15.88%	14.73%	100.00%	1,043,794	1.20	0.52	-	4,458.35	Mining	5.88%
▲ CASAGRC1 PE**	S/.	5.80	1.75%	0.52%	-4.45%	-6.30%	100.00%	53,593	0.73	6.96	15.49	151.95	Agricultural	1.31%
- CONTINC1 PE**	S/.	4.38	0.00%	2.10%	5.54%	5.54%	85.00%	63,847	0.80	3.38	16.10	6,651.96	Finance	2.85%
▲ CORARE11 PE**	S/.	0.76	4.11%	5.56%	8.57%	5.56%	100.00%	699,609	1.58	4.92	10.29	328.71	Industrial	1.72%
▼ CPACASC1 PE**	S/.	8.25	-0.36%	-1.79%	4.30%	1.23%	100.00%	40,879	0.64	4.24	31.19	1,096.15	Industrial	2.38%
▼ CVERDEC1 PE**	US\$	30.40	-0.98%	-0.33%	2.36%	2.36%	100.00%	479,351	1.36	0.00	43.05	10,641.70	Mining	5.25%
- ENGEPEC1 PE**	S/.	1.90	0.00%	4.97%	5.56%	-4.04%	90.00%	32,260	0.93	3.36	18.21	1,709.63	Public Services	1.44%
- ENDISPC1**	S/.	5.75	0.00%	2.68%	3.60%	1.95%	80.00%	11,624	0.98	3.31	12.42	1,141.96	Public Services	0.98%
▲ FERREYC1 PE**	S/.	2.68	4.28%	3.47%	7.20%	5.10%	100.00%	1,499,686	1.17	4.79	9.43	845.46	Diverse	4.90%
▼ GRAMONC1 PE**	S/.	1.81	-6.70%	-9.05%	-2.16%	-3.21%	95.00%	80,813	1.56	0.00	10.95	371.57	Diverse	4.05%
▲ IFS PE**	US\$	40.37	0.35%	1.18%	7.65%	4.86%	90.00%	83,835	0.59	3.22	14.24	4,566.29	Diverse	7.22%
▲ INRETC1 PE**	US\$	20.60	0.49%	0.98%	0.49%	-1.90%	95.00%	504,709	1.00	0.94	24.81	2,117.83	Diverse	5.28%
- LUSURC1 PE**	S/.	12.10	0.00%	0.00%	1.68%	0.41%	90.00%	315,077	0.52	5.12	14.17	1,832.52	Public Services	1.81%
▲ MILPOC1 PE**	S/.	5.35	1.71%	3.88%	16.30%	16.30%	100.00%	191,393	1.18	16.02	12.08	2,203.14	Mining	1.56%
▼ MINSUR11 PE**	S/.	1.85	-0.54%	-3.14%	8.82%	2.78%	90.00%	518,659	1.72	3.73	12.96	1,658.80	Mining	3.09%
▲ PML PE**	US\$	0.31	3.00%	-0.32%	4.75%	-3.44%	100.00%	17,736	1.41	0.00	-	80.35	Mining	2.12%
▼ RELAPAC1 PE**	S/.	0.36	-1.10%	4.64%	24.48%	16.45%	100.00%	130,813	1.50	0.00	5.54	396.88	Industrial	2.12%
▲ SCCO PE**	US\$	50.60	0.60%	0.90%	7.71%	6.39%	85.00%	27,233	1.17	1.17	32.86	39,115.24	Mining	2.14%
▲ SIDERC1 PE**	S/.	0.50	6.38%	6.84%	6.38%	4.17%	90.00%	48,945	1.71	0.00	4.51	190.95	Industrial	1.43%
▲ TV PE**	US\$	1.31	0.77%	7.38%	14.91%	9.17%	100.00%	18,015	1.48	0.00	-	1,081.70	Mining	2.93%
- UNACEMC1 PE**	S/.	3.05	0.00%	2.35%	3.39%	1.67%	95.00%	171,342	0.73	1.70	32.74	1,561.86	Industrial	3.00%
- VOLCABC1 PE**	S/.	1.37	0.00%	-2.14%	7.03%	3.79%	100.00%	522,332	1.82	1.89	17.77	3,174.65	Mining	5.90%

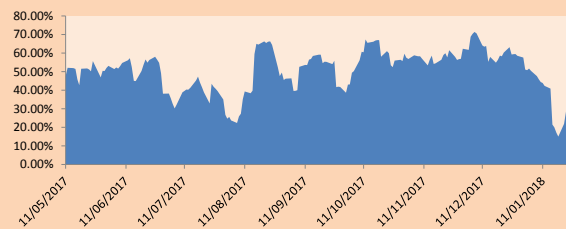
Quantity of shares: 26
 Source: Bloomberg, Económica
 * Bloomberg Industry Classification System
 ** PER is used in the stock market and original currency of the instrument
 *Legend: Variation 1D: 1 Day; 5D: 5 Days; 1M: 1 Month; YTD: Var.% 12/31/17 to date

Sectorial Indices

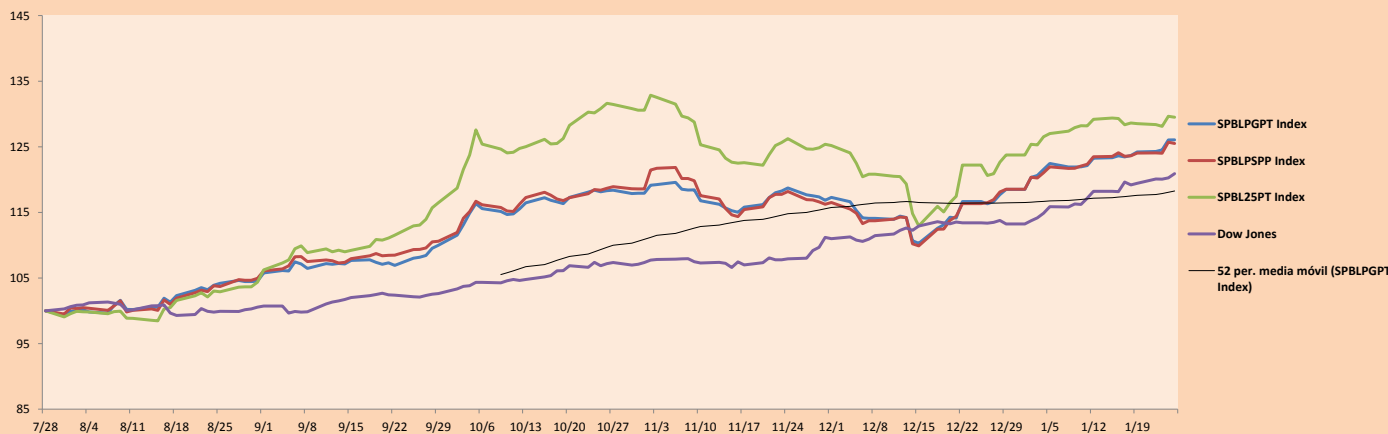
	Close	1D*	5D*	30D*	YTD*	Beta
▲ Mining Index	382.38	1.14%	2.53%	9.15%	7.57%	1.12
▲ Consumer Index	945.87	0.34%	1.40%	5.96%	4.90%	0.64
▲ Industrial Index	243.82	0.97%	0.91%	5.47%	3.33%	1.07
▲ Banking and Financial Index	1,188.04	0.20%	2.26%	12.02%	11.12%	1.10
▼ Construction Index	269.93	-0.69%	-0.63%	3.80%	1.81%	0.96
- Services Index	414.85	0.00%	3.22%	5.13%	-0.42%	0.53
▲ Juniors Index	41.51	1.97%	-2.74%	-0.43%	-5.29%	1.46
- Electric Index	404.99	0.00%	3.22%	5.13%	-0.42%	0.53

*Legend: Variation 1D: 1 Day; 5D: 5 Days; 1M: 1 Month; YTD: Var.% 12/31/17 to date

Correlation Graph of Returns of Mining Index against Metallic Index of London (3 months)



Indices (6 months)



Source: Bloomberg

Capital Market Laboratory Coordinator: Economist Bruno Bellido Anicama
 Support: Kaori Olulo, Jairo Trujillo, Mario Villar
 e-mail: pulsobursatil@ulima.edu.pe
 facebook: www.facebook.com/pulsobursatil.ul
 Phone number : 4376767 Anexes: 35340 - 35310

PULSO BURSÁTIL

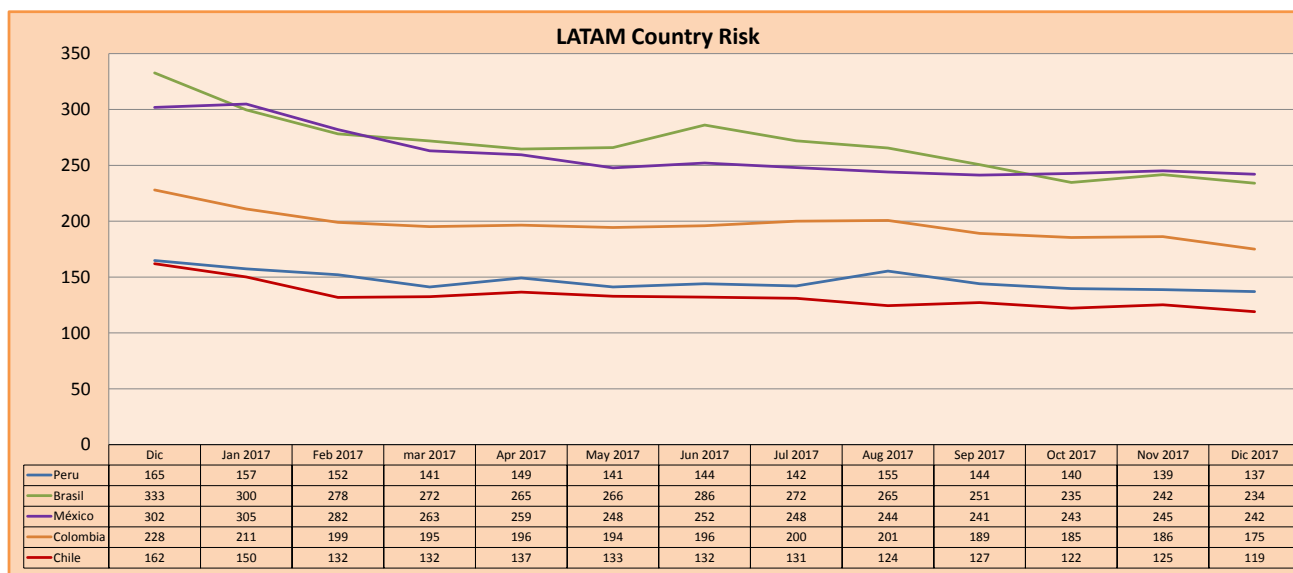
SOVEREIGN RATING

RISK RATINGS			
Moody's	S&P	Fitch	
Aaa	AAA	AAA	Prime
Aa1	AA+	AA+	High credit quality
Aa2	AA	AA	
Aa3	AA-	AA-	
A1	A+	A+	Medium-high grade, with low credit risk
A2	A	A	
A3	A-	A-	
Baa1	BBB+	BBB+	Moderate Credit Risk
Baa2	BBB	BBB	
Baa3	BBB-	BBB-	
Ba1	BB+	BB+	It has speculative elements and it is subject to substantial credit risk
Ba2	BB	BB	
Ba3	BB-	BB-	
B1	B+	B+	It is considered speculative and it has high credit risk
B2	B	B	
B3	B-	B-	
Caa1	CCC+		Bad credit conditions and it is subject to high credit risk
Caa2	CCC		
Caa3	CCC-		
Ca	CC	CCC	Very close to default or in default
	C		
C	D	DDD	

Source: Bloomberg

Latin America Credit Rating			
Clasificadora de riesgo			
Country	Moody's	Fitch	S&P
Peru	A3	BBB+	BBB+
Mexico	A3	BBB+	BBB+
Venezuela	Caa3	RD	SD
Brazil	Ba2	BB	BB-
Colombia	Baa2	BBB	BBB-
Chile	Aa3	A	A+
Argentine	B2	B	B+
Panama	Baa2	BBB	BBB

Source: Bloomberg



Source: Bloomberg

Capital Market Laboratory Coordinator: Economist Bruno Bellido Anicama
Support: Kaori Olulo, Jairo Trujillo, Mario Villar
e-mail: pulsobursatil@ulima.edu.pe
facebook: www.facebook.com/pulsobursatil.ul
Phone number : 4376767 Anexxes: 35340 - 35310