



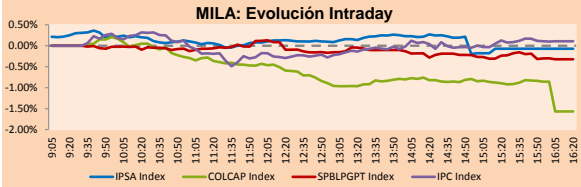
PULSO BURSÁTIL

Lima, January 31, 2018

MILA

Main Indices	Close	1 D	5 D	1 M	YTD	Market Cap. (US\$ bill)
▼ IPSA (Chile)	5,855.38	-0.07%	0.99%	5.23%	5.23%	234.78
▼ IGPA (Chile)	29,419.79	-0.01%	0.93%	5.14%	5.14%	270.16
▼ IGBC (Colombia)	12,113.25	-1.24%	-1.63%	5.53%	5.53%	118.24
▼ COLCAP (Colombia)	1,558.18	-1.57%	-1.98%	2.94%	2.94%	119.91
▼ S&P/BVL (Perú)*	21,068.89	-0.32%	-0.84%	5.48%	5.48%	110.88
▼ S&P/BVL SEL (Perú)	386.62	-1.35%	-0.94%	5.05%	5.05%	88.59
▼ S&P/BVL LIMA 25	32,125.68	-0.02%	-0.34%	4.42%	4.42%	102.75
▲ IPC (México)	50,456.17	0.15%	-0.57%	2.23%	2.23%	321.41
▲ S&P MILA 40	785.57	-1.16%	-0.73%	7.75%	7.75%	336.26

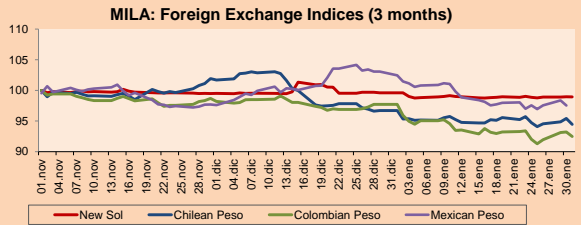
* Market Cap. Of the last price Legend: Variation 1D: 1 day, 5D: 5 days, 1M: 1 Month, YTD: Var%12/31/17 to date



Source: Bloomberg

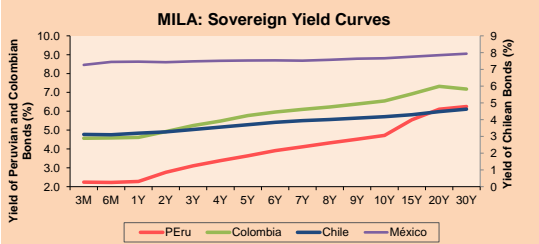
Currency	Price	1D*	5D*	30 D*	YTD*
▼ New Sol (PEN)	3,2160	-0.02%	0.09%	-0.67%	-0.67%
▼ Chilean Peso (CLP)	601.20	-1.01%	-0.30%	-2.31%	-2.31%
▼ Colombian Peso (COP)	2,826.71	-0.79%	0.50%	-5.36%	-5.36%
▼ Mexican Peso (MXN)	18.60	-0.84%	0.56%	-5.37%	-5.37%

* Legend: Variation 1D: 1 day, 5D: 5 days, 1M: 1 Month, YTD: Var%12/31/17 to date



Base: 01/11/17=100 Source: Bloomberg

Instrument	Currency	Price	Bid Yield (%)	Ask Yield (%)	Duration
PERU 4.125 08/25/2027	USD	107.497	3.24	3.18	7.85
PERU 7.125 03/30/19	USD	105.783	2.21	1.91	1.10
PERU 7.35 07/21/25	USD	128.288	3.11	3.06	6.02
PERU 8.75 11/21/33	USD	157.06	3.90	3.86	10.01
PERU 6.55 03/14/37	USD	134.24	3.99	3.96	11.53
PERU 5.625 11/18/2050	USD	126.583	4.15	4.13	16.76
CHILE 2.25 10/30/22	USD	97.595	2.83	2.76	4.46
CHILE 3.875 08/05/20	USD	103.527	2.47	2.37	2.35
CHILE 3.625 10/30/2042	USD	98.505	3.73	3.70	16.16
COLOM 11.75 02/25/20	USD	118.565	2.54	2.40	1.81
COLOM 11.85 03/09/28	USD	168.735	3.68	3.62	6.80
COLOM 10.375 01/28/33	USD	159.253	4.85	4.73	9.17
COLOM 7.375 09/18/37	USD	133.915	4.73	4.69	11.43
COLOM 6.125 01/18/41	USD	120.65	4.67	4.64	13.28
MEX 4 10/02/23	USD	103.622	3.32	3.27	5.02
MEX5.55 01/45	USD	112.295	4.75	4.725	14.69



Source: Bloomberg

Equity	Exchange	Amt.	Price	▲%
Largest gains				
CAVALIC1	Lima	PEN	5.89	5.37
GASCO	Santia.	CLP	2540.00	3.63
HABITAT	Santia.	CLP	970.00	3.19
SOQUICOM	Santia.	CLP	237.30	3.17
Largest losses				
PROMIGAS	Colomb.	COP	7110.00	-7.06
ENKA	Colomb.	COP	8.51	-4.92
GRUPOAVAL	Colomb.	COP	1245.00	-3.86
HIPERMARC	Santia.	CLP	6.45	-3.73

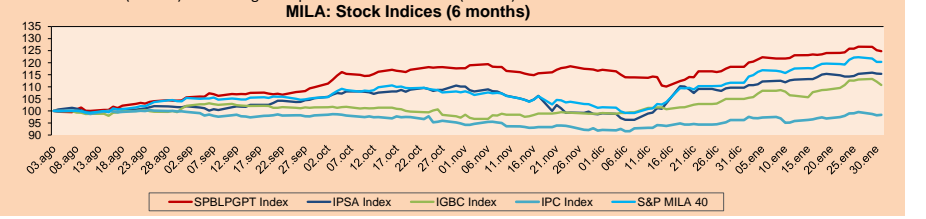
Per Turnover	Exchange	Amount (US\$)	Per Volume	Exchange	Volume
IFS	Lima	121,445,800	ALMENDRAL	Santia.	146,957,398
SQM-B	Santia.	45,918,280	BSANTANDER	Santia.	125,592,231
PFBCOLOM	Colomb.	25,250,284	CHILE	Santia.	60,818,727
ECOPETROL	Colomb.	24,017,289	VAPORES	Santia.	38,095,126
ALMENDRAL	Santia.	13,175,323	SCHWAGER	Santia.	29,630,617

MILA
Peru: The General Index of the BVL of Peru ended today's session with a negative result of -0.32%. The index maintains a cumulative positive annual trend of +6.19% in local currency, while the adjusted return to foreign currency is +5.48%. Then, the S&P/BVL Peru SEL obtained a positive return of +0.01%, while the S&P/BVL LIMA 25 decreased -0.02%. The spot PEN reached S/3.2140.

Chile: The IPSA index ended the day with a negative result of -0.07%. The sectors of the index with the downward results were Telecommunications Services (-2.24%) and Information Technology (-0.67%). On the other hand, the values with the most negative results were ENTEL Chile SA (-2.24%) and Banco Santander SA (-1.89%).

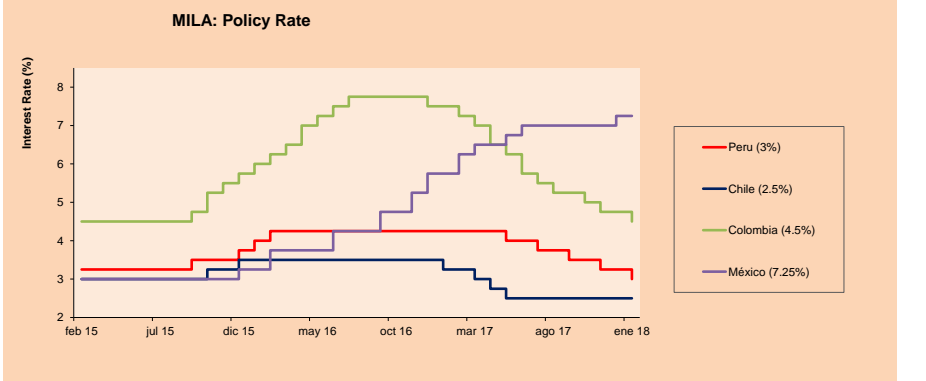
Colombia: The COLCAP index had a negative yield of -1.57%. The sectors of the index with the least favorable results were Materials (-3.12%) and Telecommunications Services (-3.07%). On the other hand, the shares with the lowest gains were Promigas SA (-7.06%) and Inversiones Argos SA (-4.23%).

Mexico: Mexico's IPC index closed today's session with a positive result of +0.15%. The sectors of the index that generated the highest results were First Necessity Products (+0.66%) and Industrial Products (+0.45%). Finally, the stocks with the lowest yields were Wal-Mart de Mexico SAB de CV (+2.96%) and Banregio Grupo Financiero SAB de CV (+2.37%).



Base: 04/08/17=100 Source: Bloomberg

ETFs	Curr.	Close	1D	5D	30 D	YTD	Exchange
▼ iShares MSCI All Peru Caped Index Fund	USD	43.26	-0.32%	-2.06%	5.56%	5.56%	NYSE Arca
▲ iShares MSCI Chile Capped	USD	55.96	0.92%	1.25%	7.29%	7.29%	BATS
- Global X MSCI Colombia	USD	15.89	0.00%	-2.03%	10.06%	10.06%	NYSE Arca
▲ iShares MSCI Mexico Capped	USD	53.11	0.89%	-1.50%	7.75%	7.75%	NYSE Arca
▲ iShares MSCI Emerging Markets	USD	51.03	0.87%	-0.72%	8.30%	8.30%	NYSE Arca
▲ Vanguard FTSE Emerging Markets	USD	49.84	0.61%	-1.29%	8.58%	8.58%	NYSE Arca
▲ iShares Core MSCI Emerging Markets	USD	61.44	0.73%	-0.79%	7.98%	7.98%	NYSE Arca
▲ iShares JP Morgan Emerging Markets Bonds	USD	64.47	0.77%	-0.80%	6.11%	6.11%	BATS
▼ Morgan Stanley Emerging Markets Domestic	USD	8.09	-0.49%	-0.49%	5.06%	5.06%	New York



Source: Bloomberg

Capital Market Laboratory Coordinator: Economist Bruno Bellido Anicama

Support: Kaori Olulo, Jairo Trujillo, Mario Villar

e-mail: pulsobursatil@ulima.edu.pe

facebook: www.facebook.com/pulsobursatil.ul

Phone number : 4376767 Anexes: 35340 - 35310

PULSO BURSÁTIL

WORLD

Main Indices	Close	1 D*	5 D*	1 M*	YTD*	Market Cap. (US\$ MILL.)
▲ Dow Jones (USA)	26,149.39	0.28%	-0.39%	5.79%	5.79%	7,070,365
▲ Standard & Poor's 500 (USA)	2,823.81	0.05%	-0.48%	5.62%	5.62%	25,029,412
▲ NASDAQ Composite (USA)	7,411.48	0.12%	-0.05%	7.36%	7.36%	11,653,021
▼ Stoxx EUROPE 600 (Europe)	395.46	-0.17%	-1.33%	1.61%	1.61%	8,502,630
▼ DAX (Germany)	13,189.48	-0.06%	-1.68%	2.10%	2.10%	992,496
▼ FTSE 100 (United Kingdom)	7,533.55	-0.72%	-1.44%	-2.01%	-2.01%	1,466,241
▲ CAC 40 (France)	5,481.93	0.15%	-0.24%	3.19%	3.19%	1,243,330
▲ IBEX 35 (Spain)	10,451.50	0.22%	-1.06%	4.06%	4.06%	532,663
▼ MSCI AC Asia Pacific Index	184.57	-1.25%	-1.20%	6.19%	6.19%	15,786,629
▲ HANG SENG (Hong Kong)	32,887.27	0.86%	-0.22%	9.92%	9.92%	3,437,794
▼ SHANGHAI SE Comp. (China)	3,480.83	-0.21%	-2.21%	5.25%	5.25%	5,579,632
▼ NIKKEI 225 (Japan)	23,098.29	-0.83%	-3.52%	1.46%	1.46%	3,737,647
▲ BOVESPA (Brazil)	84,912.70	0.51%	5.25%	11.14%	11.14%	822,848
▲ Merval (Argentina)	34,938.64	2.04%	-0.03%	16.21%	16.21%	135,723

*Legend: Variation 1D: 1 Day; 5D: 5 Days; 1M: 1 Month; YTD: Var.% 12/31/17 to date

Equity

Wall Street (Stocks from S&P 500)

Largest gains	Curr.	Price	▲%	Exchange	Largest losses	Curr.	Price	▼%	Exchange
AMD UR	USD	13.74	6.76	NASDAQ CM	TGNA UN	USD	14.47	-5.73	New York
DLR UN	USD	111.95	5.06	New York	LLY UN	USD	81.45	-5.39	New York
BA UN	USD	354.37	4.93	New York	HOG UN	USD	48.46	-4.68	New York
MU UW	USD	43.72	4.92	NASDAQ GS	BBY UN	USD	73.06	-4.23	New York

Europe (Stocks from STOXX EUROPE 600)

Largest gains	Curr.	Price	▲%	Exchange	Largest losses	Curr.	Price	▼%	Exchange
ELUXB SS	SEK	278.2	6.79	Stockholm	OUT1V FH	EUR	6.9	-15.00	Helsinki
ELISA FH	EUR	34.26	5.81	Helsinki	HMB SS	SEK	139.34	-10.60	Stockholm
JMAT LN	GBP	346.0	4.59	Londres	ERICB SS	SEK	50.6	-9.16	Stockholm
PSM GY	EUR	30.79	4.23	Xetra	BVIC LN	GBP	734.5	-6.31	Londres

Global Overview

United States:

The US stock market ended the day with positive results, being driven by solid business profits, however, lost height after the Federal Reserve insinuated that it is ready to raise interest rates from its next meeting in March. On the other hand, the performance of the US 10-year note rose to 2.74%, the highest since April 2014, after the Treasury raised the amount of long-term bonds that will sell this quarter with the worsening of the deficit budgetary. Fed officials, meeting for the last time under Janet Yellen's presidency, kept loan costs unchanged and added emphasis to their plan for further hikes, setting the stage for an increase in March under his successor Jerome Powell. Finally, the dollar fell against almost all major pairs after Trump offered few new clues about US policy in his State of the Union address, and most of the bonds won as the Bank of Japan increased the purchases of assets. An increase in risk appetite also weighed on the dollar, while the British pound rose for the second day in a row.

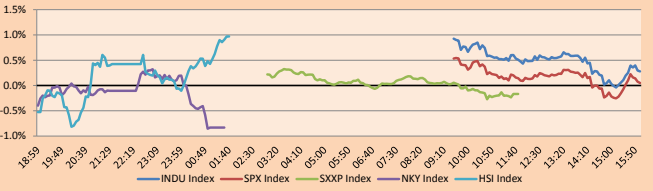
Europe:

The European stock market finished the day today with mixed results among its main indices. It highlighted the European benchmark index Stoxx Europe 600, falling by -0.17%, increasing the -0.9% drop it had in the previous session. However, the index closed the month of January with a gain of +1.6%, its largest monthly advance since +1.8% obtained in October. On the other hand, the benchmark index of the United Kingdom closed at -0.72%, its lowest point since December 20, leading the index to fall by -2% for the month of January. In addition, the strong fall in the shares of Capita PLC, a business process outsourcing company not belonging to the FTSE 100 index, fell by -48% after generating a profit warning just a few weeks after Carillion PLC, one of its main rivals, enter into liquidation. In macroeconomic news, Germany's economy increased its growth forecast for this year from 1.9% to 2.4% thanks to the strong performance of the labor market, after unemployment claims fell by 25,000, above the 16,000 predicted by The Wall Street Journal, and that the unemployment rate reaches 5.4%, its lowest point since the reunification of the country in 1990.

Asia:

The Asian stock market closed the day with negative results among its main indices. The actions fell today for the first speech on the State of the Union that President Donald Trump gave, which had a conciliatory tone. According to Rob Carnell, head of research for Asia-Pacific at the Dutch bank ING, within the themes of the speech, there were no major criticisms of Russia and China, while details on spending on infrastructure were scarce. Trump gave a message away from the surprises and pointed out the willingness to work through the lines of the party. On the other hand, Chinese stocks fell early amid the expiration of futures contracts and by a decline to eight-month lows for a key manufacturing reading for January. The Shanghai composite index closed losing around -0.2%. Regarding Japan, its benchmark index "Nikkei 225" also had a sharp drop of around -0.8%. Energy stocks in Hong Kong, Japan and Australia fell about 1.5%, as oil futures continued to lose this week, falling almost 1% more after a group of US industry said that domestic crude supplies rose almost double the amount that was expected to show in a statement shown today.

Global Markets: Intraday Evolution (var %)



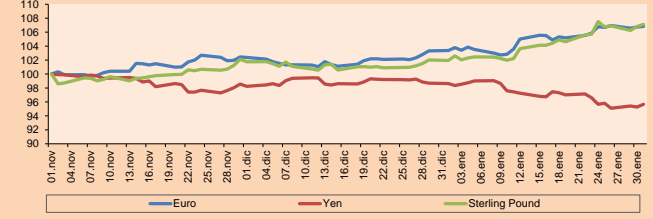
Source: Bloomberg

Currency

	Price	1 D*	5 D*	1 M*	YTD*
▲ Euro	1,2414	0.10%	0.05%	3.35%	3.41%
▲ Yen	109,2200	0.40%	0.00%	-3.03%	-3.08%
▲ Sterling Pound	1,4187	0.28%	-0.39%	5.07%	4.99%
▼ Yuan	6,2888	-0.56%	-1.08%	-3.35%	-3.35%
▲ Hong Kong Dollar	7,8229	0.03%	0.06%	0.12%	0.11%
▲ Brazilian Real	3,1869	0.17%	1.43%	-3.68%	-3.68%
▲ Argentine Peso	19,6381	0.04%	-0.13%	5.45%	5.45%

*Legend: Variation 1D: 1 Day; 5D: 5 Days; 1M: 1 Month; YTD: Var.% 12/31/17 to date

Foreign Exchange Indices (3 months)



Base: 01/11/17=100

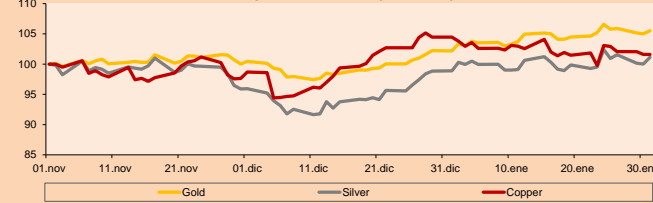
Source: Bloomberg

Commodities

	Close	1 D*	5 D*	1 M*	YTD*
▲ Oro (US\$ Oz. T) (LME)	1,344.98	0.48%	-0.99%	3.26%	3.22%
▲ Plata (US\$ Oz. T) (LME)	17.34	1.15%	-1.22%	2.30%	2.35%
- Cobre (US\$ TM) (LME)	7,009.50	0.00%	-1.43%	-2.74%	-2.74%
- Zinc (US\$ TM) (LME)	3,546.25	0.00%	2.36%	6.25%	6.25%
▲ Petróleo WTI (US\$ Barril) (NYM)	64.85	0.54%	-1.16%	7.30%	7.30%
- Estañio (US\$ TM) (LME)	21,788.00	0.00%	2.29%	8.42%	8.42%
- Plomo (US\$ TM) (LME)	2,588.50	0.00%	-1.90%	4.18%	4.18%
- Molibdeno (US\$ TM) (LME)	15,633.00	0.00%	-0.01%	-0.03%	-0.03%
▼ Azúcar #11 (US\$ Libra) (NYB-ICE)	13.23	-3.57%	0.53%	-12.73%	-12.73%
▲ Cacao (US\$ TM) (NYB-ICE)	1,996.00	1.32%	2.10%	5.50%	5.50%
▼ Café Arábica (US\$ TM) (NYB-ICE)	121.85	-0.37%	-0.53%	-3.45%	-3.45%

*Legend: Variación 1D: 1 Día; 5D: 5 Días; 1M: 1 Mes; YTD: Var.% 31/12/17 a la fecha

Principal Metals Index (3 months)



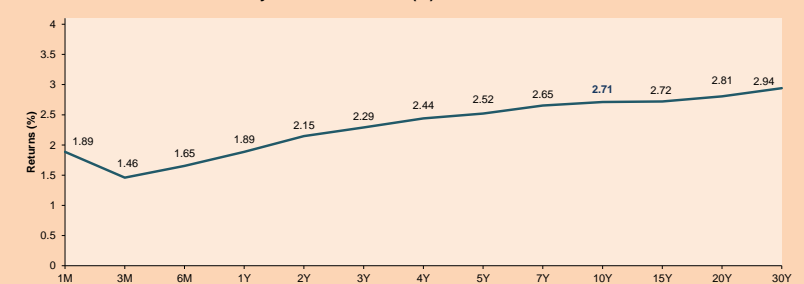
Base: 01/11/17=100

Source: Bloomberg

ETFs

	Curr.	Close	1D	5D	30 D	YTD	Exchange
SPDR S&P 500 ETF TRUST	USD	281.90	0.05%	-0.45%	5.64%	5.64%	NYSE Arca
ISHARES MSCI EMERGING MARKET	USD	51.03	0.87%	-0.72%	8.30%	8.30%	NYSE Arca
ISHARES IBOXX USD HIGH YIELD	USD	87.30	0.17%	-0.51%	0.05%	0.05%	NYSE Arca
FINANCIAL SELECT SECTOR SPDR	USD	29.74	0.27%	-0.90%	6.56%	6.56%	NYSE Arca
VANECK VECTORS GOLD MINERS E	USD	23.75	1.28%	-3.46%	2.19%	2.19%	NYSE Arca
ISHARES RUSSELL 2000 ETF	USD	156.36	-0.52%	-1.64%	2.56%	2.56%	NYSE Arca
SPDR GOLD SHARES	USD	127.65	0.67%	-0.92%	3.23%	3.23%	NYSE Arca
ISHARES 20+ YEAR TREASURY BO	USD	122.73	0.59%	-0.25%	-3.26%	-3.26%	NASDAQ GM
POWERSHARES QQQ TRUST SERIES	USD	169.40	0.41%	0.59%	8.76%	8.76%	NASDAQ GM
ISHARES NASDAQ BIOTECHNOLOGY	USD	114.08	-1.88%	-1.57%	6.85%	6.85%	NASDAQ GM
ENERGY SELECT SECTOR SPDR	USD	74.85	0.07%	-3.67%	3.58%	3.58%	NYSE Arca
PROSHARES ULTRA VIX ST FUTUR	USD	11.55	-3.99%	19.07%	13.12%	13.12%	NYSE Arca
UNITED STATES OIL FUND L.P	USD	12.98	0.62%	-1.82%	8.08%	8.08%	NYSE Arca
ISHARES MSCI BRAZIL ETF	USD	46.59	0.60%	0.52%	15.18%	15.18%	NYSE Arca
SPDR S&P OIL & GAS EXP & PR	USD	36.91	-0.16%	-7.07%	-0.73%	-0.73%	NYSE Arca
UTILITIES SELECT SECTOR SPDR	USD	51.04	1.11%	1.61%	-3.11%	-3.11%	NYSE Arca
ISHARES US REAL ESTATE ETF	USD	78.56	1.58%	-0.42%	-3.02%	-3.02%	NYSE Arca
SPDR S&P BIOTECH ETF	USD	93.37	-1.75%	-1.03%	10.02%	10.02%	NYSE Arca
ISHARES IBOXX INVESTMENT GRA	USD	120.07	0.21%	-0.02%	-1.23%	-1.23%	NYSE Arca
ISHARES JP MORGAN USD EMERGI	USD	115.36	0.15%	-0.24%	-0.64%	-0.64%	NASDAQ GM
REAL ESTATE SELECT SECT SPDR	USD	32.31	2.05%	0.53%	-1.91%	-1.91%	NYSE Arca
ISHARES CHINA LARGE-CAP ETF	USD	52.67	1.33%	-1.27%	14.08%	14.08%	NYSE Arca
CONSUMER STAPLES SPDR	USD	57.82	-0.46%	-0.99%	1.63%	1.63%	NYSE Arca
VANECK VECTORS JUNIOR GOLD M	USD	33.68	1.69%	-5.76%	-1.32%	-1.32%	NYSE Arca
SPDR BBG BARG HIGH YIELD BND	USD	36.70	0.16%	-0.62%	-0.05%	-0.05%	NYSE Arca
VANGUARD REIT ETF	USD	79.45	1.79%	-0.82%	-4.25%	-4.25%	NYSE Arca

USA Treasury Bonds Yield Curve (%)



Source: Bloomberg

Capital Market Laboratory Coordinator: Economist Bruno Bellido Anicam
Support: Kaori Olulo, Jairo Trujillo, Mario Villar
e-mail: pulsobursatil@ulima.edu.pe
facebook: www.facebook.com/pulsobursatil.ul
Phone number : 4376767 Anexes: 35340 - 35310

PULSO BURSÁTIL

LIMA

Stocks

Ticker	Currency	Price	1D*	5D*	30D*	YTD*	Frequency	Volume (US\$)	Beta	Dividend Yield (%)	Price Earning	Market Cap. (M US\$)	Economic Sector*	Index Weight
▼ ALICORC1 PE**	S/.	11.16	-2.96%	-3.88%	5.28%	5.28%	100.00%	413,248	0.95	1.25	23.41	2,961.75	Industrial	3.53%
▼ ATACOCB1 PE**	S/.	0.70	-1.41%	0.00%	2.94%	2.94%	100.00%	62,127	2.39	0.00	-	221.85	Mining	1.02%
- BACKUS11 PE**	S/.	18.50	0.00%	0.82%	0.49%	0.49%	70.00%	15,566	0.43	5.63	5.37	8,999.03	Industrial	0.82%
▼ BAP PE**	US\$	233.00	-1.27%	-1.42%	12.02%	12.02%	100.00%	598,376	1.05	3.68	-	18,515.76	Diverse	5.82%
▲ BVN PE**	US\$	15.45	0.98%	-2.28%	9.42%	9.42%	100.00%	1,313,078	1.23	0.54	-	4,252.18	Mining	5.88%
▲ CASAGRC1 PE**	S/.	5.99	-0.17%	4.54%	-3.23%	-3.23%	100.00%	52,643	0.71	6.74	16.00	156.89	Agricultural	1.31%
▲ CONTINC1 PE**	S/.	4.36	1.16%	-0.23%	5.06%	5.06%	90.00%	51,679	0.79	3.39	16.03	6,620.15	Finance	2.85%
- CORARE11 PE**	S/.	0.75	0.00%	2.74%	4.17%	4.17%	100.00%	111,502	1.57	4.99	10.02	328.02	Industrial	1.72%
▲ CPACASC1 PE**	S/.	8.35	1.83%	-0.12%	2.45%	2.45%	100.00%	325,121	0.64	4.19	31.57	1,109.10	Industrial	2.38%
▼ CVERDEC1 PE**	US\$	29.00	-3.33%	-6.45%	-2.36%	-2.36%	100.00%	923,148	1.34	0.00	41.07	10,151.62	Mining	5.25%
- ENGEPEC1 PE**	S/.	1.88	0.00%	-1.05%	-5.05%	-5.05%	80.00%	16,736	0.95	0.00	18.02	1,691.26	Public Services	1.44%
- ENDISPC1**	S/.	5.75	0.00%	0.88%	1.95%	1.95%	90.00%	37,761	0.99	3.31	12.42	1,141.71	Public Services	0.98%
- FERREYC1 PE**	S/.	2.59	0.00%	0.39%	1.57%	1.57%	100.00%	148,601	1.21	4.96	9.28	816.89	Diverse	4.90%
▲ GRAMONC1 PE**	S/.	1.85	2.21%	-4.64%	-1.07%	-1.07%	95.00%	298,616	1.50	0.00	11.19	379.70	Diverse	4.05%
▼ IFS PE**	US\$	40.30	-0.57%	0.25%	4.68%	4.68%	95.00%	121,445,800	0.60	3.23	14.22	4,558.37	Diverse	7.22%
▲ INRETC1 PE**	US\$	22.00	2.33%	6.90%	4.76%	4.76%	95.00%	3,243,957	1.00	0.88	26.50	2,261.76	Diverse	5.28%
▼ LUSURC1 PE**	S/.	12.00	-0.91%	-0.83%	-0.41%	-0.41%	90.00%	40,226	0.52	5.17	14.06	1,816.98	Public Services	1.81%
▲ MILPOC1 PE**	S/.	5.55	0.91%	8.19%	20.65%	20.65%	100.00%	102,266	1.17	15.44	12.55	2,284.45	Mining	1.56%
▲ MINSUR11 PE**	S/.	1.80	2.70%	-0.52%	5.56%	5.56%	90.00%	15,907	1.71	3.63	13.30	1,703.27	Mining	3.09%
▼ PML PE**	US\$	0.29	-3.00%	-3.00%	-9.06%	-9.06%	100.00%	57,139	1.41	0.00	-	75.67	Mining	2.12%
▼ RELAPAC1 PE**	S/.	0.35	-2.50%	-3.84%	13.23%	13.23%	100.00%	130,905	1.42	0.00	5.40	385.80	Industrial	2.12%
▲ SCOO PE**	US\$	48.52	0.37%	-1.34%	2.02%	2.02%	90.00%	830,532	1.22	1.22	31.51	37,507.34	Mining	2.14%
▲ SIDERC1 PE**	S/.	0.49	0.82%	4.04%	1.88%	1.88%	90.00%	33,288	1.65	0.00	4.46	186.71	Industrial	1.43%
▼ TV PE**	US\$	1.30	-1.52%	1.56%	8.33%	8.33%	100.00%	105,979	1.50	0.00	-	1,073.44	Mining	2.93%
▼ UNACEMC1 PE**	S/.	3.05	1.67%	3.04%	1.67%	1.67%	95.00%	534,154	0.74	1.70	32.74	1,561.52	Industrial	3.00%
- VOLCABC1 PE**	S/.	1.37	0.00%	-1.44%	3.79%	3.79%	100.00%	483,044	1.77	1.89	17.76	3,173.96	Mining	5.90%

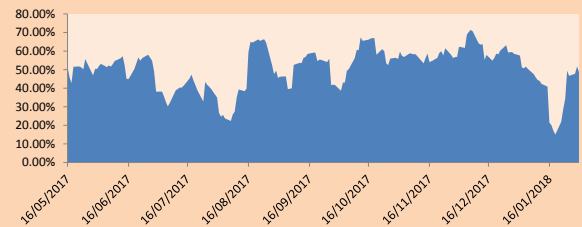
Quantity of shares: 26
 Source: Bloomberg, Económica
 * Bloomberg Industry Classification System
 ** PER is used in the stock market and original currency of the instrument
 *Legend: Variation 1D: 1 Day; 5D: 5 Days; 1M: 1 Month; YTD: Var.% 12/31/17 to date

Sectorial Indices

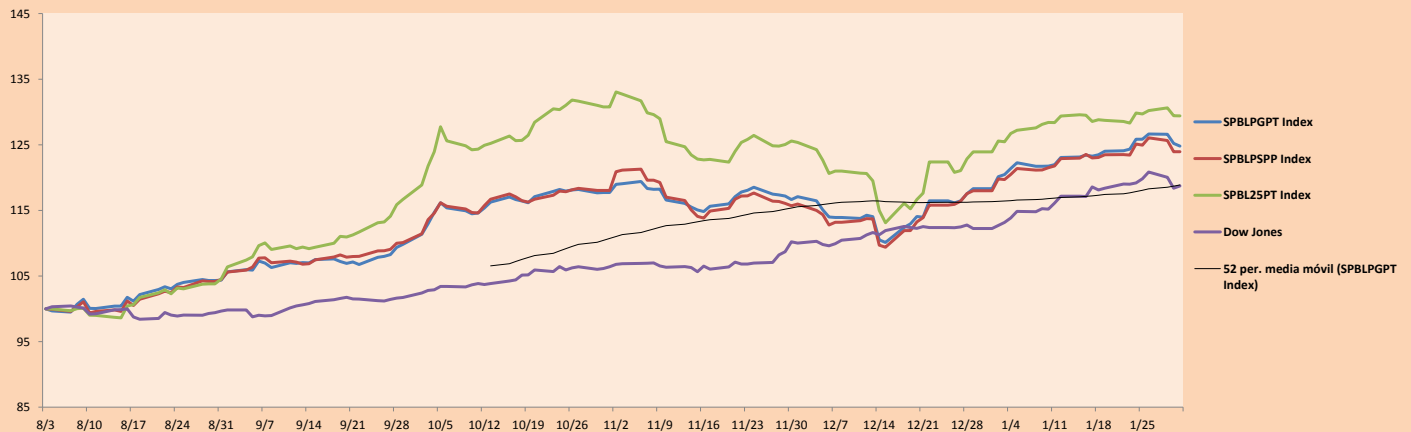
	Close	1D*	5D*	30D*	YTD*	Beta
▲ Mining Index	370.97	0.15%	-1.31%	4.36%	4.36%	1.15
▼ Consumer Index	941.51	-1.01%	-0.19%	4.42%	4.42%	0.63
▲ Industrial Index	241.96	0.93%	0.46%	2.54%	2.54%	1.08
▼ Banking and Financial Index	1,178.79	-1.11%	-1.18%	10.25%	10.25%	1.07
▲ Construction Index	272.02	1.62%	0.71%	2.60%	2.60%	0.95
▲ Services Index	411.03	0.04%	-0.53%	-1.33%	-1.33%	0.53
▼ Juniors Index	40.11	-1.45%	-3.42%	-8.49%	-8.49%	1.48
▲ Electric Index	401.26	0.03%	-0.54%	-1.33%	-1.33%	0.53

*Legend: Variation 1D: 1 Day; 5D: 5 Days; 1M: 1 Month; YTD: Var.% 12/31/17 to date

Correlation Graph of Returns of Mining Index against Metallic Index of London (3 months)



Indices (6 months)



Source: Bloomberg

Capital Market Laboratory Coordinator: Economist Bruno Bellido Anicama
 Support: Kaori Olulo, Jairo Trujillo, Mario Villar
 e-mail: pulsobursatil@ulima.edu.pe
 facebook: www.facebook.com/pulsobursatil.ul
 Phone number : 4376767 Anexxs: 35340 - 35310

PULSO BURSÁTIL

SOVEREIGN RATING

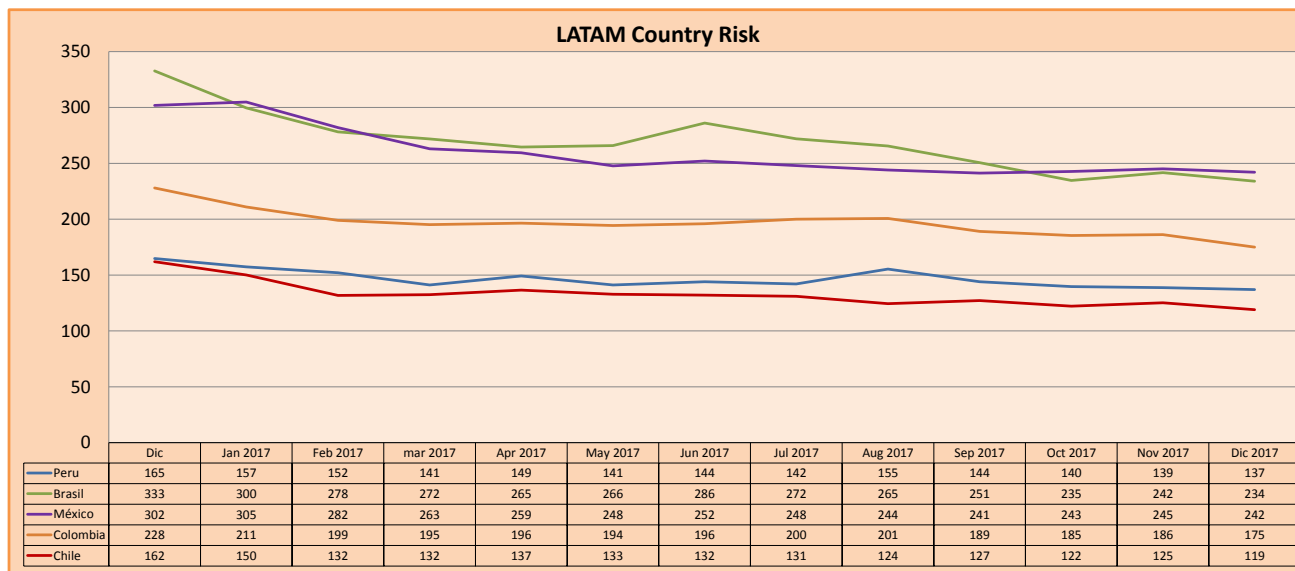
RISK RATINGS

Moody's	S&P	Fitch	
Aaa	AAA	AAA	Prime
Aa1	AA+	AA+	High credit quality
Aa2	AA	AA	
Aa3	AA-	AA-	
A1	A+	A+	Medium-high grade, with low credit risk
A2	A	A	
A3	A-	A-	
Baa1	BBB+	BBB+	Moderate Credit Risk
Baa2	BBB	BBB	
Baa3	BBB-	BBB-	
Ba1	BB+	BB+	It has speculative elements and it is subject to substantial credit risk
Ba2	BB	BB	
Ba3	BB-	BB-	
B1	B+	B+	It is considered speculative and it has high credit risk
B2	B	B	
B3	B-	B-	
Caa1	CCC+		Bad credit conditions and it is subject to high credit risk
Caa2	CCC		
Caa3	CCC-	CCC	
Ca	CC		Very close to default or in default
	C		
C	D	DDD DD D	

Source: Bloomberg

Latin America Credit Rating			
Clasificadora de riesgo			
Country	Moody's	Fitch	S&P
Peru	A3	BBB+	BBB+
Mexico	A3	BBB+	BBB+
Venezuela	Caa3	RD	SD
Brazil	Ba2	BB	BB-
Colombia	Baa2	BBB	BBB-
Chile	Aa3	A	A+
Argentine	B2	B	B+
Panama	Baa2	BBB	BBB

Source: Bloomberg



Source: Bloomberg

Capital Market Laboratory Coordinator: Economist Bruno Bellido Anicama
Support: Kaori Olulo, Jairo Trujillo, Mario Villar
e-mail: pulsobursatil@ulima.edu.pe
facebook: www.facebook.com/pulsobursatil.ul
Phone number : 4376767 Anexxes: 35340 - 35310

The content of this document is just for informational purposes . The information and opinions expressed should not be consider as recommendations for future decisions . Under any circumstances, the Capital Market Laboratory of University of Lima will be responsible for the use of the statements in this document.