



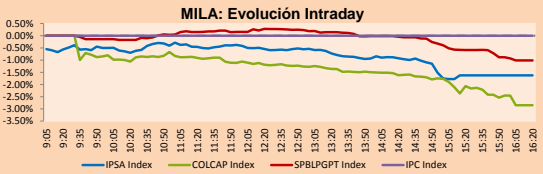
PULSO BURSÁTIL

Lima, February 5, 2018

MILA

Main Indices	Close	1 D	5 D	1 M	YTD	Market Cap. (US\$ bill)
▼ IPSA (Chile)	5,731.47	-1.62%	-2.53%	0.83%	3.00%	233.63
▼ IGPA (Chile)	28,894.17	-1.36%	-2.11%	0.90%	3.26%	269.32
▼ IGBC (Colombia)	11,718.58	-3.52%	-5.40%	-1.14%	2.10%	116.35
▼ COLCAP (Colombia)	1,523.07	-2.85%	-4.71%	-1.46%	0.62%	117.85
▼ S&P/BVL (Perú)*	20,511.03	-1.01%	-4.04%	-0.63%	2.69%	108.48
▼ S&P/BVL SEL (Perú)	380.34	-0.55%	-2.96%	0.46%	3.34%	86.09
▼ S&P/BVL LIMA 25	31,309.90	-0.94%	-3.45%	-0.86%	1.77%	100.44
▼ IPC (México)	50,395.84	-0.39%	-1.31%	1.02%	2.11%	319.38
▼ S&P MILA 40	778.85	-2.01%	-2.04%	2.04%	6.83%	335.04

* Market Cap. Of the last price Legend: Variation 1D: 1 day; 5D: 5 days; 1M: 1 Month; YTD: Var%12/31/17 to date

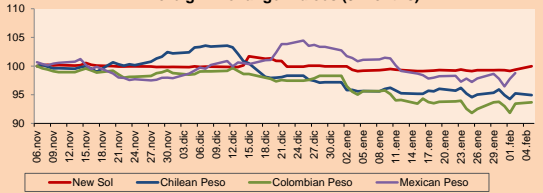


Source: Bloomberg

Currency	Price	1D*	5D*	30 D*	YTD*
▲ New Sol (PEN)	3,2383	0.59%	0.71%	0.83%	0.02%
▼ Chilean Peso (CLP)	601.19	-0.30%	-0.42%	-0.75%	-2.32%
▲ Colombian Peso (COP)	2,846.50	0.25%	0.00%	-2.04%	-4.70%
▲ Mexican Peso (MXN)	18.78	1.02%	0.96%	-2.06%	-4.45%

*Legend: Variation 1D: 1 day; 5D: 5 days; 1M: 1 Month; YTD: Var%12/31/17 to date

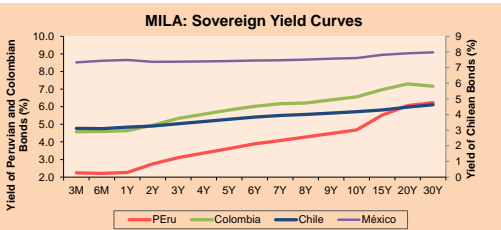
MILA: Foreign Exchange Indices (3 months)



Base: 06/11/17=100
Source: Bloomberg

Fixed Income

Instrument	Currency	Price	Bid Yield (%)	Ask Yield (%)	Duration
PERU 4.125 08/25/2027	USD	106.19	3.39	3.34	7.83
PERU 7.125 03/30/19	USD	105.5	2.34	2.14	1.08
PERU 7.35 07/21/25	USD	126.625	3.34	3.24	6.00
PERU 8.75 11/21/33	USD	155.052	4.03	3.99	9.97
PERU 6.55 03/14/37	USD	132.25	4.11	4.08	11.48
PERU 5.625 11/18/2050	USD	124.025	4.27	4.25	16.62
CHILE 2.25 10/30/22	USD	97.245	2.92	2.84	4.44
CHILE 3.875 08/05/20	USD	103.247	2.57	2.47	2.38
CHILE 3.625 10/30/2042	USD	96.14	3.90	3.84	16.04
COLOM 11.75 02/25/20	USD	118.503	2.49	2.39	1.79
COLOM 11.85 03/09/28	USD	166.374	3.88	3.82	6.77
COLOM 10.375 01/28/33	USD	158.255	4.90	4.81	9.15
COLOM 7.375 09/18/37	USD	130.697	4.93	4.90	11.35
COLOM 6.125 01/18/41	USD	117.875	4.84	4.81	13.18
MEX 4 10/02/23	USD	103.04	3.44	3.36	5.00
MEX5.55 01/45	USD	110.01	4.892	4.865	14.59



Source: Bloomberg

Equity

Largest gains	Exchange	Amt.	Price	▲%
PUERTO	Santia.	CLP	670.00	9.84
GASNATURAL	Colomb.	COP	85000.00	5.59
FINANPC1	Lima	PEN	0.58	5.45
BLUMAR	Santia.	CLP	195.90	3.65

Largest losses	Exchange	Amt.	Price	▼%
CAMANCHACA	Santia.	CLP	57.02	-8.77
ECOPETROL	Colomb.	COP	2485.00	-6.75
ORO BLANCO	Santia.	CLP	6.21	-6.31
MILPOC1	Lima	PEN	5.10	-5.90

Per Turnover	Exchange	Amount (US\$)
ECOPETROL	Colomb.	26,906,404
BSANTANDER	Santia.	17,695,121
SQM-B	Santia.	17,168,000
FALABELLA	Santia.	15,995,254
COPEC	Santia.	10,283,636

Per Volume	Exchange	Volume
BSANTANDER	Santia.	214,608,858
ALMENDRAL	Santia.	49,096,352
CHILE	Santia.	41,002,082
ECOPETROL	Colomb.	30,386,881
ORO BLANCO	Santia.	28,325,390

MILA

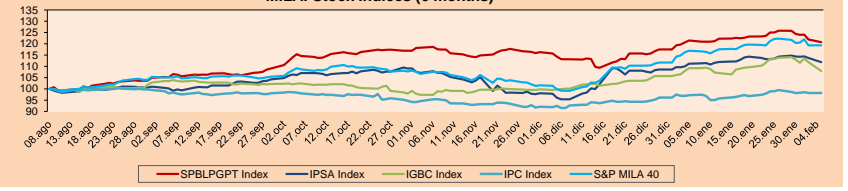
Peru: The General Index of the BVL of Peru ended today's session with a negative yield of -1.01%. The index maintains a cumulative positive annual trend of +2.69% in local currency, while the yield adjusted to foreign currency is +2.67%. Then, the S&P/BVL Peru SEL obtained a negative result of -0.55%, while the S&P/BVL LIMA 25 decreased -0.94%. The spot PEN reached S/3.2380.

Chile: The IPSA index ended the day with a negative result of -1.62%. The sectors of the index with the most negative results were Materials (-2.81%) and Telecommunications Services (-2.44%). On the other hand, the values with the most bearish results were Sociedad de Inversiones Oro Blanco SA (-6.31%) and Empresas CMPC SA (-3.61%).

Colombia: The COLCAP index closed the session with negative results of -2.85%. The sectors with decreasing returns were Energy (-6.43%) and Materials (-3.16%). In addition, the stocks with the lowest yields were Ecopetrol SA (-6.75%) and Cementos Argos SA (-5.42%).

Mexico: The Mexican stock market did not open today for a non-working holiday due to the Mexican Constitution Day.

MILA: Stock Indices (6 months)

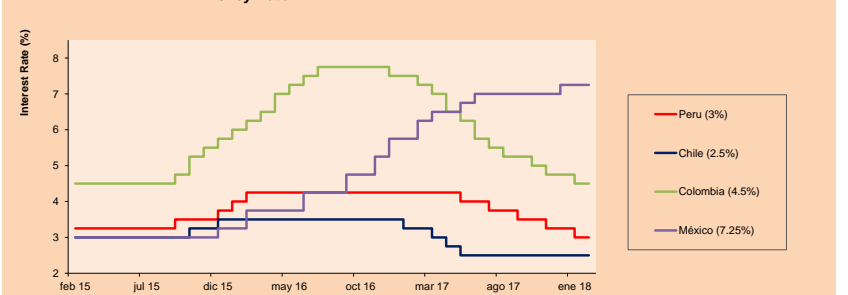


Base: 09/08/17=100
Source: Bloomberg

ETFs

	Curr.	Close	1D	5D	30 D	YTD	Exchange
▼ iShares MSCI All Peru Caped Index Fund	USD	41.74	-1.18%	-5.42%	-2.25%	1.85%	NYSE Arca
▼ iShares MSCI Chile Capped	USD	53.7	-2.58%	-3.83%	-1.39%	2.95%	BATS
▼ Global X MSCI Colombia	USD	15.3001	-1.92%	-4.07%	2.06%	5.98%	NYSE Arca
▼ iShares MSCI Mexico Capped	USD	50.68	-4.16%	-4.95%	-0.59%	2.82%	NYSE Arca
▼ iShares MSCI Emerging Markets	USD	47.33	-3.51%	-7.72%	-3.66%	0.45%	NYSE Arca
▼ Vanguard FTSE Emerging Markets	USD	46.71	-3.21%	-6.92%	-2.40%	1.74%	NYSE Arca
▼ iShares Core MSCI Emerging Markets	USD	57.19	-3.36%	-7.44%	-3.48%	0.51%	NYSE Arca
▼ iShares JP Morgan Emerging Markets Bonds	USD	61.42	-2.38%	-5.19%	-1.85%	1.09%	BATS
▼ Morgan Stanley Emerging Markets Domestic	USD	7.87	-2.36%	-3.32%	-0.88%	2.21%	New York

MILA: Policy Rate



Source: Bloomberg

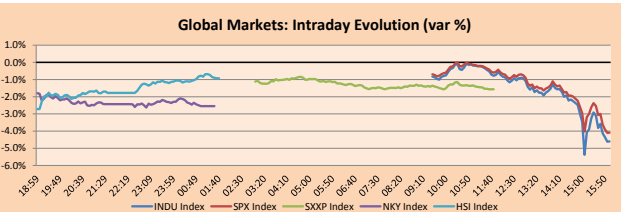
Capital Market Laboratory Coodinator: Economist Bruno Bellido Anicama
Support: Lith Fernandez Kaori Olulo, Jairo Trujillo, Mario Villar
e-mail: pulsobursatil@ulima.edu.pe
facebook: www.facebook.com/pulsobursatil.ul
Phone number : 4376767 Anexx: 35340 - 35310

PULSO BURSÁTIL

WORLD

Main Indices	Close	1 D*	5 D*	1 M*	YTD*	Market Cap. (US\$ Mill.)
▼ Dow Jones (USA)	24,345.75	-4.60%	-7.92%	-3.76%	-1.51%	6,885,195
▼ Standard & Poor's 500 (USA)	2,648.94	-4.10%	-7.17%	-3.43%	-0.92%	24,487,932
▼ NASDAQ Composite (USA)	6,967.53	-3.78%	-6.68%	-2.37%	0.93%	11,394,824
▼ Stoxx EUROPE 600 (Europe)	382.00	-1.56%	-4.45%	-3.86%	-1.84%	8,245,684
▼ DAX (Germany)	12,887.49	-0.76%	-4.78%	-4.75%	-1.78%	955,878
▼ FTSE 100 (United Kingdom)	7,334.98	-1.48%	-4.33%	-5.04%	-4.59%	1,451,293
▼ CAC 40 (France)	5,285.83	-1.48%	-4.27%	-3.98%	-0.50%	1,203,328
▼ IBEX 35 (Spain)	10,064.50	-1.44%	-4.65%	-3.33%	0.21%	514,442
▼ MSCI AC Asia Pacific Index	182.45	-1.08%	-2.39%	1.78%	4.97%	15,584,942
▼ HANG SENG (Hong Kong)	32,245.22	-1.09%	-2.19%	4.64%	7.77%	3,357,517
▼ SHANGHAI SE Comp. (China)	3,487.50	0.73%	-1.01%	2.92%	8.48%	5,587,873
▼ NIKKEI 225 (Japan)	22,682.08	-2.55%	-4.01%	-4.35%	-0.36%	3,715,745
▼ BOVESPA (Brazil)	81,861.09	-2.59%	-3.35%	3.53%	7.15%	803,865
▼ Merval (Argentina)	31,145.60	-4.50%	-10.47%	-3.25%	3.59%	132,443

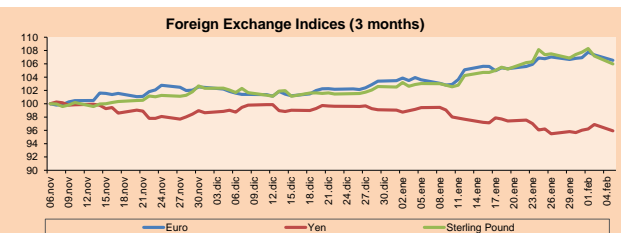
*Legend: Variation 1D: 1 Day; 5D: 5 Days; 1M: 1 Month; YTD: Var.% 12/31/17 to date



Source: Bloomberg

Currency	Price	1 D*	5 D*	1 M*	YTD*
▼ Euro	1.2367	-0.77%	-0.13%	2.81%	3.02%
▼ Yen	109.0900	-0.98%	0.12%	-3.50%	-3.19%
▼ Sterling Pound	1.3959	-1.13%	-0.82%	2.86%	3.30%
▼ Yuan	6.2926	-0.14%	-0.76%	-3.02%	-3.29%
▲ Hong Kong Dollar	7.8207	0.00%	0.04%	0.01%	0.09%
▲ Brazilian Real	3.2532	1.04%	3.10%	0.75%	-1.67%
▼ Argentine Peso	19.4651	-0.10%	-0.62%	3.08%	4.52%

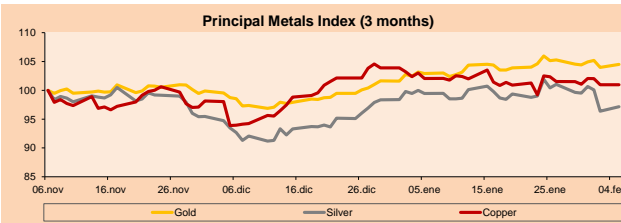
*Legend: Variation 1D: 1 Day; 5D: 5 Days; 1M: 1 Month; YTD: Var.% 12/31/17 to date



Base: 06/11/17=100
Source: Bloomberg

Commodities	Close	1 D*	5 D*	1 M*	YTD*
▲ Oro (US\$ Oz. T) (LME)	1,339.68	0.51%	-0.66%	1.54%	2.81%
▲ Plata (US\$ Oz. T) (LME)	16.74	0.83%	-2.48%	-2.31%	-1.20%
▼ Cobre (US\$ TM) (LME)	3,703.75	0.00%	-0.53%	-1.06%	-2.82%
▼ Zinc (US\$ TM) (LME)	3,550.25	0.00%	-1.40%	5.04%	6.37%
▼ Petróleo WTI (US\$ Barril) (NYM)	63.43	-3.09%	-3.25%	3.29%	4.95%
▼ Etano (US\$ TM) (LME)	21,690.00	0.00%	-1.87%	8.37%	7.93%
▼ Plomo (US\$ TM) (LME)	2,703.75	0.00%	3.93%	6.16%	8.81%
▼ Molibdeno (US\$ TM) (LME)	15,636.00	0.00%	0.03%	-0.01%	-0.31%
▲ Azúcar #11 (US\$ Libra) (NYB-ICE)	13.90	1.98%	1.68%	-7.82%	-8.31%
▲ Cacao (US\$ TM) (NYB-ICE)	2,074.00	-0.53%	5.33%	9.27%	9.56%
▼ Café Arábica (US\$ TM) (NYB-ICE)	119.80	-0.50%	-4.12%	-6.73%	-5.07%

*Lenda: Variación 1D: 1 Día; 5D: 5 Días; 1M: 1 Mes; YTD: Var.% 31/12/17 a la fecha



Base: 06/11/17=100
Source: Bloomberg

Equity

Wall Street (Stocks from S&P 500)

Largest gains	Curr.	Price	▲%	Exchange	Largest losses	Curr.	Price	▼%	Exchange
CHD UN	USD	47.42	2.35	New York	ARNC UN	USD	26.52	-8.90	New York
EL UN	USD	134.3	-0.07	New York	NVDA UW	USD	213.7	-8.49	NASDAQ GS
DPS UN	USD	118.33	-0.32	New York	CHK UN	USD	3.09	-7.21	New York
ALB UN	USD	105.15	-0.34	New York	AMD UR	USD	11.57	-7.07	NASDAQ CM

Europe (Stocks from STOXX EUROPE 600)

Largest gains	Curr.	Price	▲%	Exchange	Largest losses	Curr.	Price	▼%	Exchange
NHY NO	NOK	56.96	2.82	Oslo	HPOLB SS	SEK	77.3	-6.64	Stockholm
ECM LN	Gbp	628.4	2.78	Londres	ODDO LN	SEK	482.5	-5.11	Londres
DB1 GY	EUR	104.55	2.45	Xetra	KINVS SS	SEK	281.7	-4.67	Stockholm
KGF LN	Gbp	357.3	2.26	Londres	LDO IM	EUR	9.162	-4.56	Borsa Italiana

Global Overview

United States:

The US stock market ended the day with negative results, with the Dow recording its worst one-day decline in history, in a wave of sales that times took the characteristics of panic. The Dow fell more than 1,500 points in its lowest session, while the S&P 500 recorded its first decline of 5% from its historic high in more than a year. In greater detail, the financial sector was the biggest loser, with a stagnation of 5%, followed by medical care, industry, energy, telecommunications and information technology, which fell more than 4%. In addition, Friday represented the biggest one-day decline for the S&P since September 2016 and ended the worst weekly decline for both the Dow and the S&P in more than two years. In addition, the Cboe VIX Volatility Index, known as the fear indicator, has risen around +115.60%, reaching its highest level since August 2015, according to FactSet. Finally, the price of oil fell by approximately 2.30%, after US explorers raised the number of oil drilling platforms to the largest amount since August.

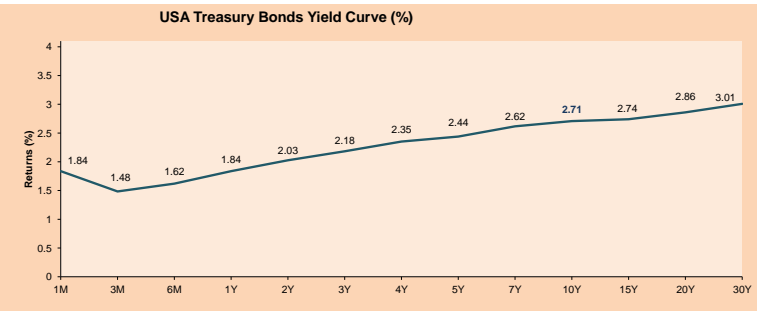
Europe:

The European stock market ended today with negative results among its main indices, mainly caused by the global effect of the US Employment Report on Friday. This showed that wages had risen more than expected in January of this year, this salary increase would be translated as an inflationary situation sowing doubts about possible increases in the interest rate of the FED; therefore, bond yields continue to improve, reducing the attractiveness of stocks. The European index, Stoxx Europe 600, fell by -1.56%, the lowest closing since November 15; the German index, Dax was reduced by -0.76%, while the French index, CAC 40 collapsed by -1.48% and the English FTSE 100 by -1.46%. As for the main securities, shares of Ryanair Holdings PLC fell by -1.8%, after it was said that ticket prices would fall by at least 3% by 2018. Porsche Automobil Holding shares fell by -2.54% and those of Vodafone Group PLC by -4.07% after it was confirmed that they are in discussions with Liberty Global for the acquisition of European assets.

Asia:

The Asian stock market closed the day with negative results among its main indices. The Asian stock markets continue to be hurt by the big sell-off in Europe and the United States after some pessimistic financial reports and an increase in wages in the last monthly US employment report. Specialists explain that this increase was expected by the growth of the labor market, but it was the speed of the increase that surprised the main markets of the world. The highest regional fall was Japan, the Japanese benchmark index "Nikkei 225" fell below 23,000 for the first time in the year and closed with approximately -2.5%, its highest fall since November 9, 2016. In addition, stock indices were affected by increases in bond yields. The yield on 10-year US Treasury bonds rose from 2.42% to 2.86%. Regarding the companies, the Japanese giant "Mitsubishi Motors Corp." radically increased its profit forecast for this year, as the company currently handles strong sales in China and a recovery in sales in Japan after a fuel economy scandal in Japan. The company expects to earn close to \$ 900 million for the year that closes in March. In China, sales increased 51% from November to December and Japan's sales rose 24% a year after Mitsubishi Motors suspended sales after saying it had exaggerated fuel figures for many of its models.

ETFs	Curr.	Close	1D	5D	30 D	YTD	Exchange
SPDR S&P 500 ETF TRUST	USD	283.93	-4.18%	-7.29%	-3.47%	-1.10%	NYSE Arca
ISHARES MSCI EMERGING MARKET	USD	47.33	-3.51%	-7.72%	-3.66%	0.45%	NYSE Arca
ISHARES IBOXX USD HIGH YIELD	USD	85.74	-0.56%	-1.96%	-2.53%	-1.74%	NYSE Arca
FINANCIAL SELECT SECTOR SPDR	USD	27.88	-5.04%	-7.22%	-1.87%	-0.11%	NYSE Arca
VANECK VECTORS GOLD MINERS E	USD	22.71	-0.87%	-4.10%	-4.06%	-2.28%	NYSE Arca
ISHARES RUSSELL 2000 ETF	USD	147.92	-3.84%	-6.78%	-4.44%	-2.98%	NYSE Arca
SPDR GOLD SHARES	USD	126.71	0.25%	-0.50%	1.10%	2.47%	NYSE Arca
ISHARES 20+ YEAR TREASURY BO	USD	120.71	0.94%	-1.65%	-3.98%	-4.85%	NASDAQ GM
POWERSHARES QQQ TRUST SERIES	USD	158.12	-3.94%	-7.04%	-2.35%	1.52%	NASDAQ GM
ISHARES NASDAQ BIOTECHNOLOGY	USD	107.18	-4.42%	-9.55%	-2.41%	0.38%	NASDAQ GM
ENERGY SELECT SECTOR SPDR	USD	69.42	-4.20%	-9.86%	-7.40%	-3.93%	NYSE Arca
PROSHARES ULTRA VIX ST FUTUR	USD	22.87	66.21%	101.85%	154.39%	124.00%	NYSE Arca
UNITED STATES OIL FUND LP	USD	12.77	-2.07%	-2.59%	3.74%	6.33%	NYSE Arca
ISHARES MSCI BRAZIL ETF	USD	43.46	-3.55%	-6.32%	1.45%	7.44%	NYSE Arca
SPDR S&P OIL & GAS EXP & PR	USD	34.37	-3.21%	-10.26%	-10.82%	-7.56%	NYSE Arca
UTILITIES SELECT SECTOR SPDR	USD	49.06	-1.64%	-2.64%	-4.42%	-6.87%	NYSE Arca
ISHARES US REAL ESTATE ETF	USD	74.00	-3.22%	-8.84%	-6.67%	-8.05%	NYSE Arca
SPDR S&P BIOTECH	USD	88.34	-3.86%	-8.96%	1.49%	4.09%	NYSE Arca
ISHARES IBOXX INVESTMENT GRA	USD	118.68	0.06%	-1.29%	-1.83%	-2.37%	NYSE Arca
ISHARES JPMORGAN USD EMERGI	USD	113.46	-0.57%	-1.67%	-2.79%	-2.27%	NASDAQ GM
REAL ESTATE SELECT SECT SPDR	USD	30.55	-2.58%	-3.90%	-5.33%	-7.26%	NYSE Arca
ISHARES CHINA LARGE-CAP ETF	USD	49.88	-2.33%	-5.62%	2.76%	8.04%	NYSE Arca
CONSUMER STAPLES SPDR	USD	54.42	-3.63%	-6.94%	-4.41%	-4.34%	NYSE Arca
VANECK VECTORS JUNIOR GOLD M	USD	32.38	0.28%	-3.54%	-6.09%	-5.13%	NYSE Arca
SPDR BBG BARC HIGH YIELD BND	USD	36.04	-0.63%	-2.07%	-2.67%	-1.85%	NYSE Arca
VANGUARD REAL ESTATE ETF	USD	74.79	-2.97%	-4.87%	-7.72%	-9.87%	NYSE Arca



Source: Bloomberg

Capital Market Laboratory Coordinator: Economist Bruno Bellido Anicama
Support: Lith Fernandez Kaori Olulo, Jairo Trujillo, Mario Villar
e-mail: pulsobursatil@ulima.edu.pe
facebook: www.facebook.com/pulsobursatil.ul
Phone number : 4376767 Anexos: 35340 - 35310

PULSO BURSÁTIL

LIMA

Stocks

Ticker	Currency	Price	1D*	5D*	30D*	YTD*	Frequency	Volume (US\$)	Beta	Dividend Yield (%)	Price Earning	Market Cap. (M US\$)	Economic Sector*	Index Weight
- ALICORC1 PE**	S/.	11.20	0.00%	-3.61%	0.45%	5.66%	100.00%	17,293	0.95	1.25	23.49	2,951.82	Industrial	3.53%
- ATACOB1 PE**	S/.	0.67	0.00%	-6.94%	-4.29%	-1.47%	100.00%	116,158	2.38	0.00	-	216.39	Mining	1.02%
- BACKUS11 PE**	S/.	18.51	0.00%	-0.48%	1.15%	0.54%	75.00%	7,198	0.43	0.00	5.37	8,938.82	Industrial	0.82%
▼ BAP PE**	US\$	217.49	-2.91%	-8.15%	-2.47%	4.56%	100.00%	1,187,092	1.06	3.95	-	17,283.23	Diverse	5.82%
▲ BVN PE**	US\$	15.25	0.33%	-3.36%	2.56%	8.00%	100.00%	91,779	1.24	0.55	-	4,197.21	Mining	5.88%
▲ CASAGRC1 PE**	S/.	5.99	0.00%	-0.17%	-1.80%	-3.23%	100.00%	2,768	0.72	6.74	16.00	155.81	Agricultural	1.31%
▲ CONTINC1 PE**	S/.	4.25	-2.75%	-2.52%	-2.97%	2.41%	90.00%	488,386	0.78	3.48	15.62	6,408.69	Finance	2.85%
▲ CORARE11 PE**	S/.	0.73	1.39%	-3.95%	0.00%	1.39%	100.00%	36,122	1.53	5.12	9.75	307.07	Industrial	1.72%
▼ CPACASC1 PE**	S/.	8.25	-0.96%	0.00%	1.85%	1.23%	100.00%	33,929	0.62	4.24	31.19	1,088.43	Industrial	2.38%
▲ CVERDEC1 PE**	US\$	29.00	0.35%	-3.33%	-5.84%	-2.36%	100.00%	40,643	1.33	0.00	41.07	10,151.62	Mining	5.25%
▲ ENGEPEC1 PE**	S/.	1.85	-2.63%	-2.63%	-7.50%	-6.57%	80.00%	125,413	0.93	3.45	17.73	1,652.81	Public Services	1.44%
▼ ENDISPC1**	S/.	5.60	-2.61%	-2.61%	-0.71%	-0.71%	95.00%	109,930	0.97	3.40	12.09	1,104.27	Public Services	0.98%
▼ FERREYC1 PE**	S/.	2.59	0.00%	-2.26%	0.00%	1.57%	100.00%	1,542,453	1.16	4.96	9.28	811.26	Diverse	4.90%
▼ GRAMONC1 PE**	S/.	1.90	-1.55%	4.97%	2.70%	1.60%	100.00%	184,322	1.49	0.00	11.50	387.27	Diverse	4.05%
▼ IFS PE**	US\$	41.00	-0.12%	1.18%	5.13%	6.49%	100.00%	1,807,279	0.57	3.17	14.59	4,637.55	Diverse	7.22%
▼ INRETC1 PE**	US\$	21.80	-0.46%	3.27%	4.81%	3.81%	95.00%	250,700	1.00	0.89	26.48	2,241.20	Diverse	5.28%
▼ LUSURC1 PE**	S/.	12.15	-0.74%	0.41%	1.00%	0.83%	90.00%	190,223	0.47	5.10	14.23	1,827.03	Public Services	1.81%
▼ MILPOC1 PE**	S/.	5.10	-5.90%	-7.27%	4.94%	10.87%	100.00%	90,252	1.14	16.80	11.44	2,086.70	Mining	1.56%
▼ MINSUR1 PE**	S/.	1.83	-1.08%	-2.14%	-6.15%	1.67%	90.00%	84,101	1.67	3.77	12.70	1,629.22	Mining	3.09%
- PML PE**	US\$	0.30	0.00%	-2.96%	-8.39%	-7.81%	100.00%	109,337	1.41	0.00	-	76.87	Mining	2.12%
▼ RELAPAC1 PE**	S/.	0.34	0.00%	-5.56%	0.00%	9.68%	100.00%	155,180	1.47	0.00	5.19	371.14	Industrial	2.12%
▼ SCCO PE**	US\$	47.27	-1.52%	-5.29%	-3.94%	-0.61%	90.00%	31,438	1.25	24.75	36.539.71	Mining	2.14%	
- SIDERC1 PE**	S/.	0.49	0.00%	-1.41%	-1.21%	1.88%	80.00%	6,086	1.63	0.00	4.46	185.42	Industrial	1.43%
▼ TV PE**	US\$	1.25	-0.79%	-7.41%	-0.79%	4.17%	100.00%	33,236	1.49	0.00	-	1,032.16	Mining	2.93%
▼ UNACEMC1 PE**	S/.	3.00	0.00%	-0.99%	2.04%	0.00%	95.00%	3,976	0.72	1.73	32.20	1,525.34	Industrial	3.00%
▼ VOLCABC1 PE**	S/.	1.26	-1.56%	-9.35%	-7.35%	-4.55%	100.00%	438,927	1.78	2.06	16.20	3,069.12	Mining	5.90%

Quantity of shares: 26

Source: Bloomberg, Economática

* Bloomberg Industry Classification System

** PER is used in the stock market and original currency of the instrument

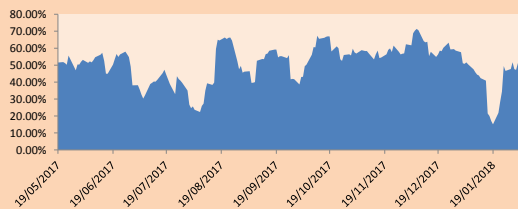
*Legend: Variation 1D: 1 Day; 5D: 5 Days; 1M: 1 Month; YTD: Var.% 12/31/17 to date

Sectorial Indices

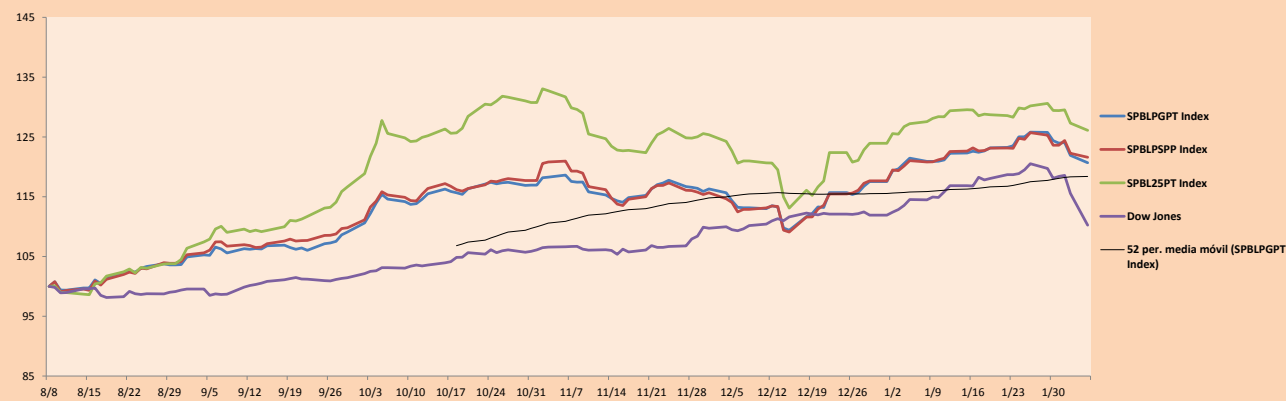
	Close	1D*	5D*	30D*	YTD*	Beta
▼ Mining Index	362.38	-0.55%	-4.45%	-1.40%	1.94%	1.15
▼ Consumer Index	941.51	-0.02%	-1.19%	1.91%	4.42%	0.61
▼ Industrial Index	240.08	-0.39%	-1.01%	1.54%	1.75%	1.05
▼ Banking and Financial Index	1,113.74	-2.30%	-6.88%	-1.48%	4.17%	1.11
▼ Construction Index	269.03	-0.61%	-0.10%	2.42%	1.47%	0.94
▼ Services Index	408.45	-1.33%	-1.31%	-2.37%	-1.95%	0.51
- Juniors Index	40.41	0.00%	-1.65%	-9.82%	-7.80%	1.41
▼ Electric Index	398.75	-1.33%	-1.31%	-2.37%	-1.95%	0.51

*Legend: Variation 1D: 1 Day; 5D: 5 Days; 1M: 1 Month; YTD: Var.% 12/31/17 to date

Correlation Graph of Returns of Mining Index against Metallic Index of London (3 months)



Indices (6 months)



Source: Bloomberg

Capital Market Laboratory Coordinator: Economist Bruno Bellido Anicama
Support: Lith Fernandez Kaori Olulo, Jairo Trujillo, Mario Villar
e-mail: pulsobursatil@ulima.edu.pe
facebook: www.facebook.com/pulsobursatil.ul
Phone number : 4376767 Anexxes: 35340 - 35310

The content of this document is just for informational purposes. The information and opinions expressed should not be considered as recommendations for future decisions. Under any circumstances, the Capital Market Laboratory of University of Lima will be responsible for the use of the statements in this document.

PULSO BURSÁTIL

SOVEREIGN RATING

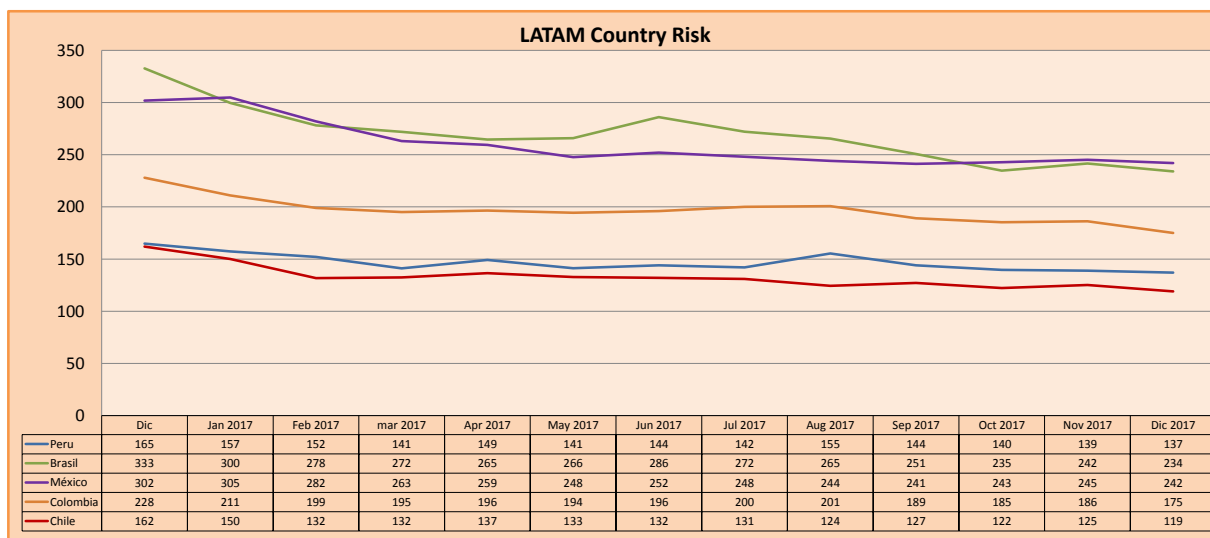
RISK RATINGS

Moody's	S&P	Fitch	
Aaa	AAA	AAA	Prime
Aa1	AA+	AA+	High credit quality
Aa2	AA	AA	
Aa3	AA-	AA-	
A1	A+	A+	Medium-high grade, with low credit risk
A2	A	A	
A3	A-	A-	
Baa1	BBB+	BBB+	Moderate Credit Risk
Baa2	BBB	BBB	
Baa3	BBB-	BBB-	
Ba1	BB+	BB+	It has speculative elements and it is subject to substantial credit risk
Ba2	BB	BB	
Ba3	BB-	BB-	
B1	B+	B+	It is considered speculative and it has high credit risk
B2	B	B	
B3	B-	B-	
Caa1	CCC+	CCC	Bad credit conditions and it is subject to high credit risk
Caa2	CCC		
Caa3	CCC-		
Ca	CC	DDD	Very close to default or in default
C	C		
	D		

Source: Bloomberg

Latin America Credit Rating			
Clasificadora de riesgo			
Country	Moody's	Fitch	S&P
Peru	A3	BBB+	BBB+
Mexico	A3	BBB+	BBB+
Venezuela	Caa3	RD	SD
Brazil	Ba2	BB	BB-
Colombia	Baa2	BBB	BBB-
Chile	Aa3	A	A+
Argentina	B2	B	B+
Panama	Baa2	BBB	BBB

Source: Bloomberg



Source: Bloomberg

Capital Market Laboratory Coordinator: Economist Bruno Bellido Anicama
 Support: Lith Fernandez Kaori Olulo, Jairo Trujillo, Mario Villar
 e-mail: pulsobursatil@ulima.edu.pe
 facebook: www.facebook.com/pulsobursatil.ul
 Phone number : 4376767 Anexes: 35340 - 35310

The content of this document is just for informational purposes. The information and opinions expressed should not be considered as recommendations for future decisions. Under any circumstances, the Capital Market Laboratory of University of Lima will be responsible for the use of the statements in this document