



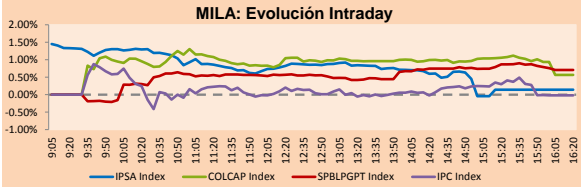
# PULSO BURSÁTIL

Lima, February 12, 2018

## MILA

Main Indices	Close	1 D	5 D	1 M	YTD	Market Cap. (US\$ bill)
▲ IPSA (Chile)	5,557.07	0.14%	-3.04%	-3.07%	-0.14%	216.48
▲ IGPA (Chile)	28,047.82	0.13%	-2.93%	-2.71%	0.24%	267.15
▲ IGBC (Colombia)	11,621.20	0.46%	-0.83%	-0.02%	1.25%	109.02
▲ COLCAP (Colombia)	1,509.48	0.57%	-0.89%	-0.78%	-0.28%	110.31
▲ S&P/BVL (Perú)*	20,339.68	0.71%	-0.84%	-2.11%	1.83%	105.69
▲ S&P/BVL SEL (Perú)	375.36	0.38%	-1.31%	-2.09%	1.99%	84.14
▼ S&P/BVL LIMA 25	30,675.01	-0.27%	-2.03%	-4.50%	-0.30%	97.67
▲ IPC (México)	47,830.49	0.07%	-5.09%	-2.66%	-3.09%	307.64
▼ S&P MILA 40	737.80	-1.34%	-3.48%	-3.87%	1.20%	314.87

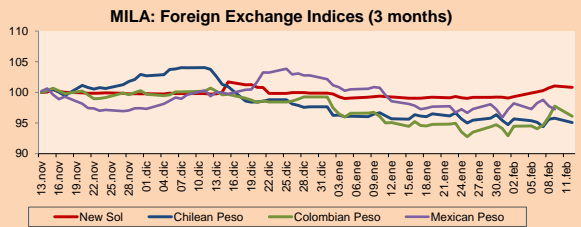
\* Market Cap. Of the last price Legend: Variation 1D: 1 day, 5D: 5 days, 1M: 1 Month, YTD: Var%12/31/17 to date



Source: Bloomberg

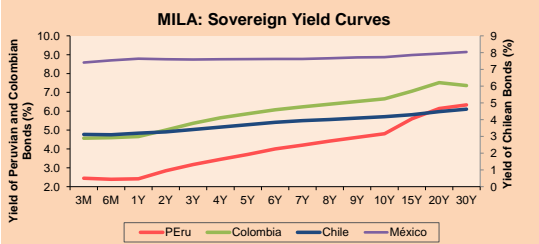
Currency	Price	1D*	5D*	30 D*	YTD*
▼ New Sol (PEN)	3,2681	-0.22%	0.92%	1.58%	0.94%
▼ Chilean Peso (CLP)	599.25	-0.75%	-0.32%	-0.65%	-2.63%
▼ Colombian Peso (COP)	2,890.82	-1.71%	1.68%	1.09%	-3.18%
▼ Mexican Peso (MXN)	18.60	-0.53%	-0.97%	-2.29%	-5.38%

\* Legend: Variation 1D: 1 day, 5D: 5 days, 1M: 1 Month, YTD: Var%12/31/17 to date



Base: 13/11/17=100 Source: Bloomberg

Instrument	Currency	Price	Bid Yield (%)	Ask Yield (%)	Duration
PERU 4.125 08/25/2027	USD	104.15	3.64	3.58	7.79
PERU 7.125 03/30/19	USD	105.408	2.38	2.10	1.06
PERU 7.35 07/21/25	USD	125.465	3.47	3.41	5.97
PERU 8.75 11/21/33	USD	151.74	4.24	4.20	9.88
PERU 6.55 03/14/37	USD	129.798	4.27	4.24	11.37
PERU 5.625 11/18/2050	USD	120.3	4.45	4.43	16.36
CHILE 2.25 10/30/22	USD	96.6	3.07	2.99	4.42
CHILE 3.875 08/05/20	USD	103.063	2.64	2.54	2.36
CHILE 3.625 10/30/2042	USD	94.02	4.03	3.99	15.90
COLOM 11.75 02/25/20	USD	117.405	2.93	2.80	1.77
COLOM 11.85 03/09/28	USD	163.229	4.15	4.09	6.71
COLOM 10.375 01/28/33	USD	156.753	5.00	4.91	9.11
COLOM 7.375 09/18/37	USD	126.61	5.21	5.18	11.15
COLOM 6.125 01/18/41	USD	113.3	5.15	5.11	12.92
MEX 4 10/02/23	USD	102.13	3.60	3.56	4.97
MEX5.55 01/45	USD	106.832	5.097	5.065	14.34



Source: Bloomberg

Equity	Largest gains	Exchange	Amt.	Price	▲%	Largest losses	Exchange	Amt.	Price	▼%
GASNATURAL	Colomb.	COP	92000.00	5.75		EDELAR	Santia.	CLP	135.50	-9.67
BVN	Lima	USD	15.10	5.23		COUNTRY-A	#N/A Field Not	CLP	120000.00	-6.90
BESALCO	Santia.	CLP	686.88	5.23		BROCALM1	Lima	PEN	7.00	-4.11
SIDERC1	Lima	PEN	0.47	4.44		INVERMAR	Santia.	CLP	117.00	-4.10

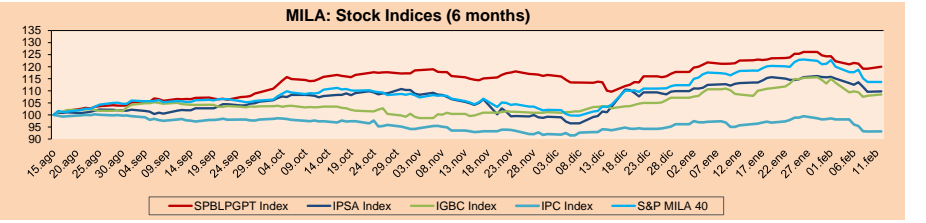
Per Turnover	Exchange	Amount (US\$)	Per Volume	Exchange	Volume
CENCOSUD	Santia.	23,099,358	BSANTANDER	Santia.	183,535,028
FALABELLA	Santia.	20,811,081	VAPORES	Santia.	52,846,420
ECOPETROL	Colomb.	15,478,785	CHILE	Santia.	47,177,033
BSANTANDER	Santia.	14,722,044	ORO BLANCO	Santia.	42,251,236
COPEC	Santia.	8,884,919	CAMANCHACA	Santia.	24,124,120

**MILA**  
**Peru:** The General Index of the BVL of Peru ended today's session with a positive result of +0.79%. The index maintains a cumulative positive annual trend of +1.91% in local currency, while the yield adjusted to foreign currency is +0.97%. Then, the S&P/BVL Peru SEL obtained a positive return of +0.30%, while the S&P/BVL LIMA 25 decreased -0.27%. The spot PEN reached S/3.2681.

**Chile:** The IPSA index ended the day with a positive return of +0.14%. The sectors of the index with the most positive results were Industrial (+1.15%) and Public Services (+0.56%). On the other hand, the values with the most bullish results were Besalco SA (+5.23%) and Lan Airlines SA (+2.13%).

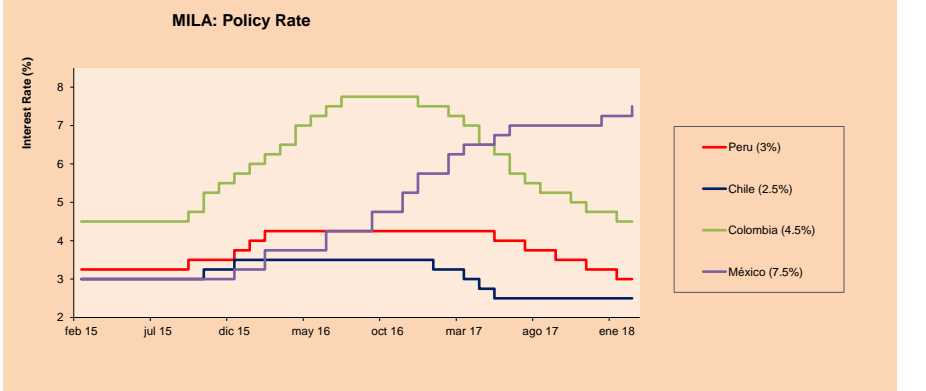
**Colombia:** The COLCAP index closed the session with positive results of +0.94%. The sectors with upward yields were Finance (+1.54%) and Materials (+1.17%). In addition, the stocks with the highest yields were BanColombia SA (+2.57%) and Banco Davivienda SA (+2.44%).

**Mexico:** Mexico's IPC index closed today's session with a negative return of -0.02%. The sectors of the index that generated the most negative results were Health (-0.99%) and Finance (-0.63%). Finally, the stocks with the lowest returns were Grupo Elektra SAB de CV (-3.40%) and Alfa SAB de CV (-2.33%).



Base: 16/08/17=100 Source: Bloomberg

ETFs	Curr.	Close	1D	5D	30 D	YTD	Exchange
▲ iShares MSCI All Peru Caped Index Fund	USD	40.49	0.65%	-2.99%	-5.79%	-1.20%	NYSE Arca
▲ iShares MSCI Chile Capped	USD	53.25	0.99%	-0.84%	-3.22%	2.09%	BATS
▲ Global X MSCI Colombia	USD	14.929	1.63%	-2.43%	-1.33%	3.41%	NYSE Arca
▲ iShares MSCI Mexico Capped	USD	50.62	0.56%	-0.12%	-0.14%	2.70%	NYSE Arca
▲ iShares MSCI Emerging Markets	USD	47.15	1.57%	-0.38%	-4.77%	0.06%	NYSE Arca
▲ Vanguard FTSE Emerging Markets	USD	46.27	1.38%	-0.94%	-4.54%	0.78%	NYSE Arca
▲ iShares Core MSCI Emerging Markets	USD	56.96	1.42%	-0.40%	-4.73%	0.11%	NYSE Arca
▲ iShares JP Morgan Emerging Markets Bonds	USD	60.57	0.50%	-1.38%	-4.22%	-0.31%	BATS
▲ Morgan Stanley Emerging Markets Domestic	USD	7.99	1.27%	1.52%	-0.50%	3.77%	New York



Source: Bloomberg

Capital Market Laboratory Coordinator: Economist Bruno Bellido Anicama

Support: Lith Fernandez Kaori Olulo, Jairo Trujillo, Mario Villar

e-mail: pulsobursatil@ulima.edu.pe

facebook: www.facebook.com/pulsobursatil.ul

Phone number : 4376767 Anexes: 35340 - 35310

# PULSO BURSÁTIL

## WORLD

Main Indices	Close	1 D*	5 D*	1 M*	YTD*	Market Cap. (US\$ Mill.)
▲ Dow Jones (USA)	24,601.27	1.70%	1.05%	-4.66%	-0.48%	6,545,893
▲ Standard & Poor's 500 (USA)	2,656.00	1.39%	0.27%	-4.67%	-0.66%	23,210,348
▲ NASDAQ Composite (USA)	6,981.96	1.56%	0.21%	-3.84%	1.14%	10,810,634
▲ Stoxx EUROPE 600 (Europe)	372.93	1.17%	-2.37%	-6.41%	-4.18%	8,104,000
▲ DAX (Germany)	12,282.77	1.45%	-3.19%	-7.27%	-4.91%	931,597
▲ FTSE 100 (United Kingdom)	7,177.06	1.19%	-2.15%	-7.73%	-6.64%	1,432,356
▲ CAC 40 (France)	5,140.06	1.20%	-2.76%	-6.83%	-3.25%	1,178,318
▲ IBEX 35 (Spain)	9,771.10	1.36%	-2.92%	-6.61%	-2.72%	503,478
▼ MSCI AC Asia Pacific Index	170.54	-1.67%	-4.92%	-5.71%	-1.88%	14,590,700
▼ HANG SENG (Hong Kong)	29,459.63	-0.16%	-8.64%	-6.22%	-1.54%	3,051,325
▲ SHANGHAI SE Comp. (China)	3,154.13	0.78%	-9.56%	-8.01%	-4.63%	5,031,461
▼ NIKKEI 225 (Japan)	21,382.62	-2.32%	-8.13%	-9.60%	-6.07%	3,553,559
▼ BOVESPA (Brazil)	80,898.70	-0.78%	-3.74%	1.95%	5.89%	763,655
▼ Merval (Argentina)	30,143.44	-2.83%	-7.58%	-7.87%	0.26%	121,416

\*Legend: Variation 1D: 1 Day; 5D: 5 Days; 1M: 1 Month; YTD: Var.% 12/31/17 to date

## Equity

Wall Street (Stocks from S&P 500)

Largest gains	Curr.	Price	▲%	Exchange	Largest losses	Curr.	Price	▼%	Exchange
ALXN UW	USD	115.43	6.29	NASDAQ GS	DG UN	USD	95.09	-3.23	New York
UA UN	USD	13.18	5.78	New York	GPS UN	USD	31.42	-2.69	New York
MRO UN	USD	16.27	4.90	New York	DLTR UW	USD	104.74	-2.68	NASDAQ GS
CTL UN	USD	16.76	4.88	New York	VTR UN	USD	50.46	-2.19	New York

Europe (Stocks from STOXX EUROPE 600)

Largest gains	Curr.	Price	▲%	Exchange	Largest losses	Curr.	Price	▼%	Exchange
UMI BB	EUR	46.78	6.13	EN Brussels	SNH GY	EUR	0.3822	-4.45	Xetra
KINVB SS	SEK	284.5	4.90	Stockholm	AF FP	EUR	10.19	-3.55	EN Paris
DHER GY	EUR	33.48	4.69	Xetra	UBI IM	EUR	3.989	-2.59	Borsa Italiana
BIRG ID	EUR	7.965	4.66	Dublin	PNN LN	Gbp	632.8	-2.59	Londres

## Global Overview

### United States:

The US stock market ended the day with positive results, in the midst of ups and downs fading large profits. In addition, the announcement of President Donald Trump's budget, which includes an infrastructure spending plan, helped the S&P Materials sector. In more detail, the actions were helped a little by Trump's budget proposal for fiscal year 2019, which includes \$200 billion for infrastructure expenditures, more than \$23 billion for border security and immigration compliance, as well as \$716 billion for military programs, including the United States nuclear arsenal. However, the infrastructure policy requires 60 votes of the Senate and the Republican Party has 51 seats, even if it is a mystery that the Administration's plan can obtain the necessary support to become law. On the other hand, the performance of 10-year Treasury bonds rose slightly exceeding 2.88%, closing a maximum of 4 years, this was due to the fact that the operators were heading towards safe havens like Treasury bonds, while the main stock indices they were suffering falls, which in turn stimulated the purchase of bonds sending their performance to the maximum.

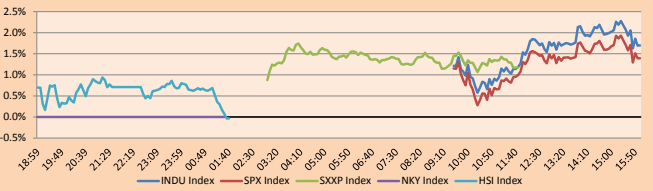
### Europe:

The European stock market closed the day with positive results among its main indexes after the downward trend with which the old continent was coming. This result was partly due to the rebound in the US market helped by the rise of the Dow Jones and the Standard and Poor's 500. The fall from two weeks ago could be interpreted as a correction after the sudden increase in markets, and the performance of the markets baskets. Among the main indices, the Stoxx Europe 600 (SXEP) increased in + 1.17%, partly favored by the rise of + 13.39% of the Danish telecommunications company TDC A / S, the German DAX 30 index increased by + 1.45%, the French CAC 40 + 1.20% and the English FTSE 100 rose by 1.19%. With respect to the main values, not all were up; for example, the satellite operator SES SA collapsed -11.18% after the announcement of the resignation of its general manager Karim Michel, and for the intention of retirement of the CFO Padraig McCarthy. Likewise, Airbus SE shares fell by -1.22%, due to possible engine failures. Regarding monetary policies, no big changes are expected, because at the January meeting the ECB did not change interest rates and reiterated that a bond purchase program is scheduled in September, in view of this context the Bank of England said that it could raise rates sooner than expected.

### Asia:

The Asian stock market closed with mixed results among its main indices. The markets in China achieved positive results after the big declines of last week. The Shanghai Composite Index, like South Korea and Taiwan, closed with at least a gain of + 0.5%. In Japan, the markets in Tokyo did not open on holiday. However, the yen generated profits after reports from the Bank of Japan governor, Haruhiko Kuroda, will be re-elected for another term. In Singapore, its "STI" benchmark index posted a small gain of + 0.20%, as the Singapore Stock Exchange fell to a one-year low. With regard to China, Chinese banks recorded a record number of new bank loans in January, as new government regulations have caused a shift towards traditional loans. Since companies increased their demand for bank loans as other forms of financing became more difficult to achieve. However, specialists explain that the government's measures to control the debt could cause the debt growth to slow down this year, possibly causing a weaker economic expansion.

Global Markets: Intraday Evolution (var %)



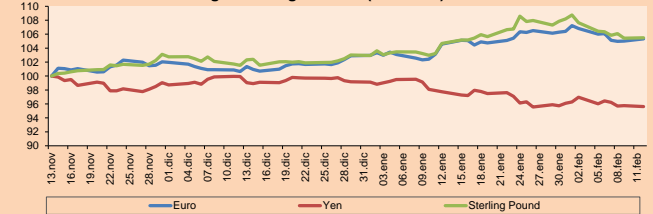
Source: Bloomberg

## Currency

Currency	Price	1 D*	5 D*	1 M*	YTD*
▲ Euro	1.2291	0.32%	-0.61%	0.73%	2.38%
▼ Yen	108.6500	-0.14%	-0.40%	-2.17%	-3.59%
▲ Sterling Pound	1.3835	0.06%	-0.89%	0.78%	2.38%
▲ Yuan	6.3275	0.39%	0.55%	-2.19%	-2.76%
▲ Hong Kong Dollar	7.8192	0.01%	-0.02%	-0.04%	0.07%
- Brazilian Real	3.3011	0.00%	1.47%	2.99%	-0.34%
- Argentine Peso	19.9969	0.00%	2.73%	7.02%	7.38%

\*Legend: Variation 1D: 1 Day; 5D: 5 Days; 1M: 1 Month; YTD: Var.% 12/31/17 to date

Foreign Exchange Indices (3 months)



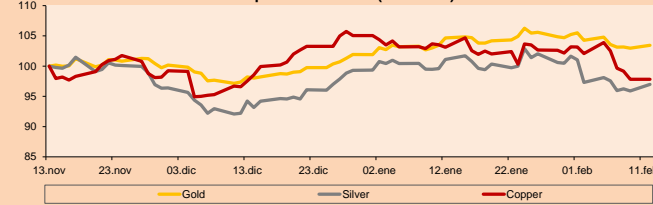
Base: 13/11/17=100  
Source: Bloomberg

## Commodities

Commodity	Close	1 D*	5 D*	1 M*	YTD*
▲ Oro (US\$ Oz. T) (LME)	1,322.46	0.48%	-1.29%	-1.16%	1.49%
▲ Plata (US\$ Oz. T) (LME)	16.54	1.12%	-1.17%	-4.09%	-2.35%
- Cobre (US\$ TM) (LME)	6,711.75	0.00%	-5.85%	-5.12%	-6.87%
- Zinc (US\$ TM) (LME)	3,412.00	0.00%	-5.11%	-0.68%	2.23%
▲ Petróleo WTI (US\$ Barril) (NYM)	59.30	0.17%	-7.56%	-7.68%	-1.89%
- Estañio (US\$ TM) (LME)	21,125.00	0.00%	-4.28%	4.05%	5.12%
- Plomo (US\$ TM) (LME)	2,536.00	0.00%	-4.69%	-0.30%	2.06%
- Molibdeno (US\$ TM) (LME)	15,633.00	0.00%	-0.01%	-0.03%	-0.03%
▲ Azúcar #11 (US\$ Libra) (NYB-ICE)	13.61	0.44%	-1.80%	-4.96%	-9.39%
▼ Cacao (US\$ TM) (NYB-ICE)	2,007.00	-2.57%	-3.23%	4.10%	6.02%
▼ Café Arábica (US\$ TM) (NYB-ICE)	123.50	-0.24%	1.15%	-0.96%	-3.93%

\*Legend: Variación 1D: 1 Día; 5D: 5 Días; 1M: 1 Mes; YTD: Var.% 31/12/17 a la fecha

Principal Metals Index (3 months)

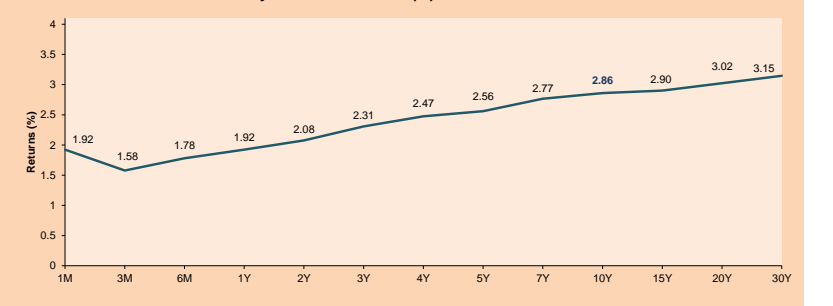


Base: 13/11/17=100  
Source: Bloomberg

## ETFs

ETF	Curr.	Close	1D	5D	30 D	YTD	Exchange
SPDR S&P 500 ETF TRUST	USD	265.34	1.47%	0.53%	-4.53%	-0.57%	NYSE Arca
ISHARES MSCI EMERGING MARKET	USD	47.15	1.57%	-0.38%	-4.77%	0.06%	NYSE Arca
ISHARES IBOXX USD HIGH YIELD	USD	85.53	0.68%	-0.24%	-2.34%	-1.98%	NYSE Arca
FINANCIAL SELECT SECTOR SPDR	USD	28.07	1.41%	0.68%	-3.97%	0.57%	NYSE Arca
VANECK VECTORS GOLD MINERS E	USD	21.97	1.34%	-3.26%	-8.50%	-5.46%	NYSE Arca
ISHARES RUSSELL 2000 ETF	USD	148.16	0.93%	0.16%	-6.32%	-2.82%	NYSE Arca
SPDR GOLD SHARES	USD	125.37	0.48%	-1.06%	-1.25%	1.39%	NYSE Arca
ISHARES 20+ YEAR TREASURY BO	USD	118.46	0.44%	-1.86%	-4.87%	-6.62%	NASDAQ GM
POWERSHARES QQQ TRUST SERIES	USD	158.87	1.77%	0.47%	-3.42%	2.00%	NASDAQ GM
ISHARES NASDAQ BIOTECHNOLOGY	USD	107.35	1.59%	0.16%	-4.13%	0.54%	NASDAQ GM
ENERGY SELECT SECTOR SPDR	USD	67.76	1.63%	-2.39%	-12.48%	-6.23%	NYSE Arca
PROSHARES ULTRA VIX ST FUTUR	USD	21.31	-8.70%	-6.82%	145.79%	108.72%	NYSE Arca
UNITED STATES OIL FUND LP	USD	11.89	0.25%	-6.89%	-7.61%	-1.00%	NYSE Arca
ISHARES MSCI BRAZIL ETF	USD	43.78	1.44%	0.74%	1.27%	8.23%	NYSE Arca
SPDR S&P OIL & GAS EXP & PR	USD	33.23	2.59%	-3.32%	-16.34%	-10.62%	NYSE Arca
UTILITIES SELECT SECTOR SPDR	USD	48.93	0.76%	-0.26%	-2.65%	-7.12%	NYSE Arca
ISHARES US REAL ESTATE ETF	USD	73.50	0.30%	-0.68%	-4.50%	-9.27%	NYSE Arca
SPDR S&P BIOTECH ETF	USD	88.79	2.03%	0.51%	-0.93%	4.62%	NYSE Arca
ISHARES IBOXX INVESTMENT GRA	USD	117.22	0.00%	-1.23%	-2.99%	-3.57%	NYSE Arca
ISHARES JP MORGAN USD EMERGI	USD	112.04	0.16%	-1.25%	-3.52%	-3.50%	NASDAQ GM
REAL ESTATE SELECT SECT SPDR	USD	30.17	0.27%	-1.24%	-3.27%	-8.41%	NYSE Arca
ISHARES CHINA LARGE-CAP ETF	USD	46.69	1.24%	-6.40%	-6.23%	1.13%	NYSE Arca
CONSUMER STAPLES SPDR	USD	54.26	1.02%	-0.29%	-4.22%	-4.62%	NYSE Arca
VANECK VECTORS JUNIOR GOLD M	USD	31.69	3.46%	-2.13%	-9.30%	-7.15%	NYSE Arca
SPDR BBG BARC HIGH YIELD BND	USD	35.92	0.67%	-0.33%	-2.55%	-2.18%	NYSE Arca
VANGUARD REAL ESTATE ETF	USD	74.18	0.04%	-0.82%	-5.64%	-10.60%	NYSE Arca

USA Treasury Bonds Yield Curve (%)



Source: Bloomberg

Capital Market Laboratory Coordinator: Economist Bruno Bellido Anicam  
Support: Lith Fernandez Kaori Olulo, Jairo Trujillo, Mario Villar  
e-mail: pulsohorsatil@ulima.edu.pe  
facebook: www.facebook.com/pulsohorsatil.ul  
Phone number : 4376767 Anexes: 35340 - 35310

# PULSO BURSÁTIL

## LIMA

### Stocks

Ticker	Currency	Price	1D*	5D*	30D*	YTD*	Frequency	Volume (US\$)	Beta	Dividend Yield (%)	Price Earning	Market Cap. (M US\$)	Economic Sector*	Index Weight
▼ ALICORC1 PE**	S/.	11.00	-1.17%	-1.79%	-2.65%	3.77%	100.00%	1,466,395	0.92	1.27	23.07	2,871.88	Industrial	3.53%
▼ ATACOCB1 PE**	S/.	0.64	-1.54%	-4.48%	-12.33%	-5.88%	100.00%	27,277	2.28	0.00	-	210.53	Mining	1.02%
- BACKUS11 PE**	S/.	19.00	0.00%	2.65%	2.43%	3.20%	75.00%	2,274	0.42	0.00	5.52	8,948.90	Industrial	0.82%
▲ BAP PE**	US\$	215.00	1.90%	-1.14%	-3.50%	3.37%	100.00%	1,949,589	1.04	3.99	-	17,085.36	Diverse	5.82%
▲ BVN PE**	US\$	15.10	5.23%	-0.98%	3.28%	6.94%	100.00%	507,865	1.23	0.55	-	4,155.97	Mining	5.88%
- CASAGRC1 PE**	S/.	5.56	0.00%	-7.18%	-7.79%	-10.18%	100.00%	2,552	0.73	7.26	14.85	143.31	Agricultural	1.31%
▲ CONTINC1 PE**	S/.	4.34	1.17%	2.12%	-1.14%	4.58%	85.00%	86,060	0.81	3.41	15.95	6,484.73	Finance	2.85%
▼ CORARE11 PE**	S/.	0.70	-2.78%	-4.11%	-5.41%	-2.78%	100.00%	5,239	1.52	5.34	9.35	302.42	Industrial	1.72%
- CPACASC1 PE**	S/.	8.00	0.00%	-3.03%	-3.03%	-1.84%	100.00%	336,891	0.64	4.38	30.25	1,046.15	Industrial	2.38%
▼ CVERDEC1 PE**	US\$	28.50	-0.87%	-1.72%	-7.89%	-4.04%	100.00%	45,625	1.30	0.00	40.36	9,976.60	Mining	5.25%
- ENGEPEC1 PE**	S/.	1.88	0.00%	1.62%	0.53%	-5.05%	75.00%	48,626	0.95	0.00	18.02	1,664.30	Public Services	1.44%
- ENDISPC1**	S/.	5.70	0.00%	1.79%	1.79%	1.06%	90.00%	11,178	0.99	3.34	12.31	1,113.74	Public Services	0.98%
- FERREYC1 PE**	S/.	2.56	0.00%	-1.16%	-0.78%	0.39%	100.00%	713,918	1.14	5.02	9.18	794.55	Diverse	4.90%
▼ GRAMONC1 PE**	S/.	1.88	-1.05%	-1.05%	-5.53%	0.53%	100.00%	4,628	1.47	0.00	11.38	379.70	Diverse	4.05%
▼ IFS PE**	US\$	39.00	-1.99%	-4.88%	-2.99%	1.30%	100.00%	1,131,712	0.61	3.33	13.99	4,411.32	Diverse	7.22%
▼ INRETC1 PE**	US\$	21.25	-0.70%	-2.52%	1.92%	1.19%	95.00%	2,125	1.00	0.92	26.02	2,184.66	Diverse	5.28%
▲ LUSURC1 PE**	S/.	11.86	0.08%	-2.39%	-1.58%	-1.58%	100.00%	17,364	0.47	5.23	13.89	1,767.16	Public Services	1.81%
- MILPOC1 PE**	S/.	5.01	0.00%	-1.76%	-1.18%	8.91%	95.00%	167	1.25	0.00	11.15	2,030.29	Mining	1.56%
- MINSUR11 PE**	S/.	1.70	0.00%	-7.10%	-15.00%	-5.56%	85.00%	46,847	1.68	4.05	11.71	1,499.68	Mining	3.09%
- PML PE**	US\$	0.28	0.00%	-5.08%	-14.11%	-12.50%	90.00%	21,838	1.41	0.00	-	72.96	Mining	2.12%
▼ RELAPAC1 PE**	S/.	0.33	-0.90%	-2.35%	-7.78%	7.10%	100.00%	87,561	1.51	0.00	5.03	359.10	Industrial	2.12%
▲ SCOO PE**	US\$	46.78	0.26%	-1.04%	-6.23%	-1.64%	90.00%	276,662	1.73	1.73	24.50	36,160.94	Mining	2.14%
▲ SIDERC1 PE**	S/.	0.47	4.44%	-3.89%	-2.29%	-2.08%	80.00%	93,328	1.75	0.00	4.28	176.59	Industrial	1.43%
▼ TV PE**	US\$	1.16	-0.85%	-7.20%	-9.38%	-3.33%	100.00%	233,696	1.59	0.00	-	957.84	Mining	2.93%
▲ UNACEMC1 PE**	S/.	3.02	0.67%	0.67%	0.67%	0.67%	95.00%	94,341	0.73	1.72	32.42	1,521.51	Industrial	3.00%
▼ VOLCABC1 PE**	S/.	1.22	-1.61%	-3.17%	-13.48%	-7.58%	100.00%	1,384,850	1.78	1.12	15.57	3,011.23	Mining	5.90%

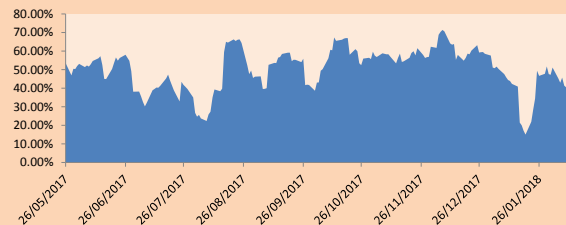
Quantity of shares: 26  
 Source: Bloomberg, Económica  
 \* Bloomberg Industry Classification System  
 \*\* PER is used in the stock market and original currency of the instrument  
 \*Legend: Variation 1D: 1 Day; 5D: 5 Days; 1M: 1 Month; YTD: Var.% 12/31/17 to date

### Sectorial Indices

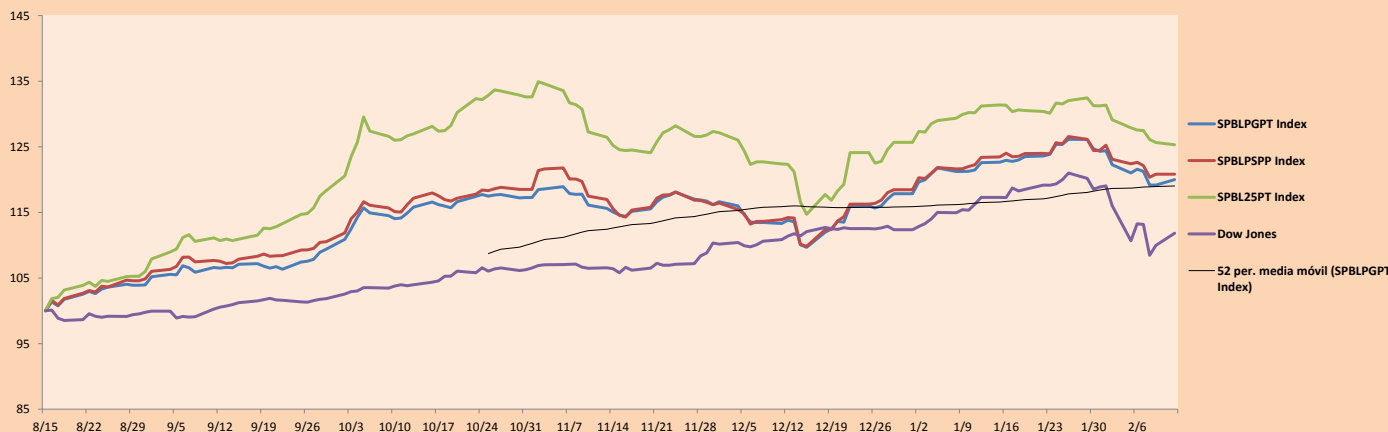
	Close	1D*	5D*	30D*	YTD*	Beta
▲ Mining Index	359.89	1.36%	-0.69%	-3.14%	1.24%	1.17
▼ Consumer Index	932.38	-0.84%	-0.97%	-0.01%	3.41%	0.56
▼ Industrial Index	237.15	-0.02%	-1.22%	-1.45%	0.50%	1.05
▲ Banking and Financial Index	1,112.38	1.43%	-0.12%	-1.85%	4.04%	1.09
▲ Construction Index	265.73	0.00%	-1.23%	-1.57%	0.23%	0.94
▼ Services Index	400.72	-0.46%	-1.89%	-0.83%	-3.81%	0.56
▼ Juniors Index	38.19	-0.16%	-5.49%	-13.93%	-12.87%	1.41
▼ Electric Index	391.20	-0.46%	-1.89%	-0.83%	-3.81%	0.56

\*Legend: Variation 1D: 1 Day; 5D: 5 Days; 1M: 1 Month; YTD: Var.% 12/31/17 to date

**Correlation Graph of Returns of Mining Index against Metallic Index of London (3 months)**



**Indices (6 months)**



Source: Bloomberg

Capital Market Laboratory Coordinador: Economist Bruno Bellido Anicama  
 Support: Lith Fernandez Kaori Oluloo, Jairo Trujillo, Mario Villar  
 e-mail: pulsobursatil@ulima.edu.pe  
 facebook: www.facebook.com/pulsobursatil.ul  
 Phone number : 4376767 Anexes: 35340 - 35310

# PULSO BURSÁTIL

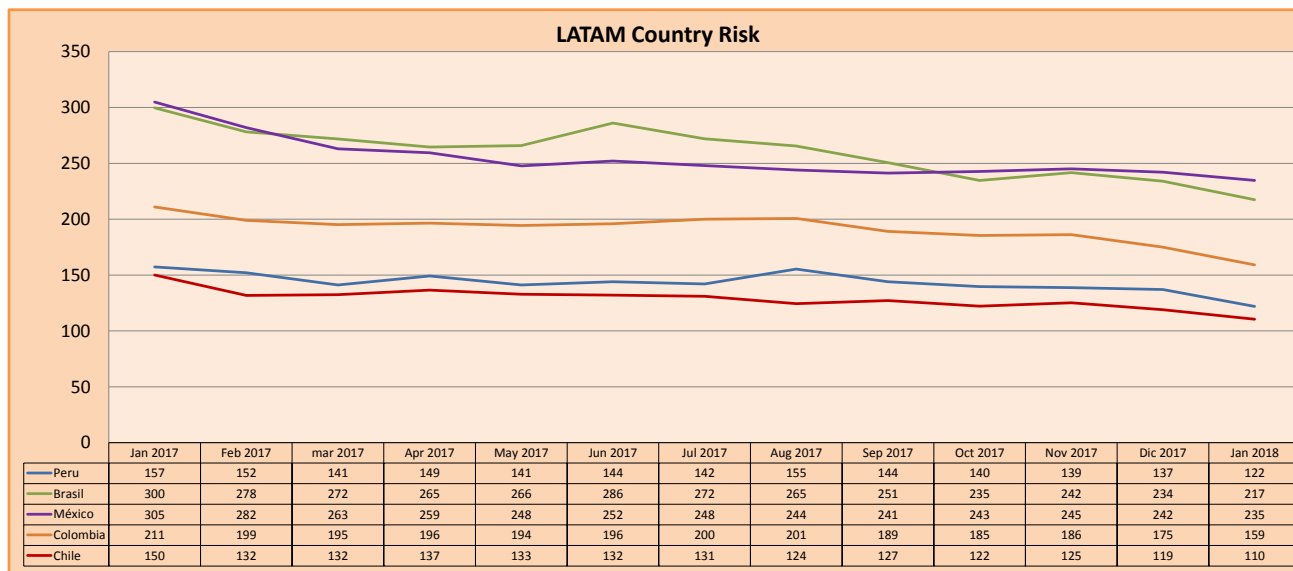
## SOVEREIGN RATING

RISK RATINGS			
Moody's	S&P	Fitch	
Aaa	AAA	AAA	Prime
Aa1	AA+	AA+	High credit quality
Aa2	AA	AA	
Aa3	AA-	AA-	
A1	A+	A+	Medium-high grade, with low credit risk
A2	A	A	
A3	A-	A-	
Baa1	BBB+	BBB+	Moderate Credit Risk
Baa2	BBB	BBB	
Baa3	BBB-	BBB-	
Ba1	BB+	BB+	It has speculative elements and it is subject to substantial credit risk
Ba2	BB	BB	
Ba3	BB-	BB-	
B1	B+	B+	It is considered speculative and it has high credit risk
B2	B	B	
B3	B-	B-	
Caa1	CCC+		Bad credit conditions and it is subject to high credit risk
Caa2	CCC		
Caa3	CCC-	CCC	
Ca	CC		Very close to default or in default
	C		
C	D	DDD	

Source: Bloomberg

Latin America Credit Rating			
Clasificadora de riesgo			
Country	Moody's	Fitch	S&P
Peru	A3	BBB+	BBB+
Mexico	A3	BBB+	BBB+
Venezuela	Caa3	C	SD
Brazil	Ba2	BB	BB-
Colombia	Baa2	BBB	BBB-
Chile	Aa3	A	A+
Argentine	B2	B	B+
Panama	Baa2	BBB	BBB

Source: Bloomberg



Source: Bloomberg

Capital Market Laboratory Coordinator: Economist Bruno Bellido Anicama  
Support: Lith Fernandez Kaori Olulo, Jairo Trujillo, Mario Villar  
e-mail: pulsobursatil@ulima.edu.pe  
facebook: www.facebook.com/pulsobursatil.ul  
Phone number : 4376767 Anexxes: 35340 - 35310

The content of this document is just for informational purposes . The information and opinions expressed should not be consider as recommendations for future decisions . Under any circumstances, the Capital Market Laboratory of University of Lima will be responsible for the use of the statements in this document.