



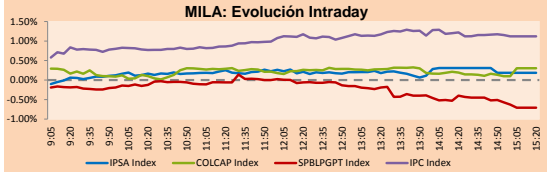
PULSO BURSÁTIL

Lima, August 21, 2018

MILA

Main Indices	Close	1 D	5 D	1 M	YTD	Market Cap. (US\$ bill)
▲ IPSA (Chile)	5,251.14	0.19%	0.45%	-3.30%	-5.63%	185.01
▲ IGPA (Chile)	26,529.70	0.12%	0.25%	-2.96%	-5.19%	228.59
▲ IGBC (Colombia)	12,122.51	0.40%	1.07%	-0.81%	5.61%	110.37
▲ COLCAP (Colombia)	1,533.20	0.30%	0.87%	-0.91%	1.29%	114.17
▼ S&P/BVL (Perú)*	19,445.81	-0.71%	-2.70%	-2.99%	-2.65%	101.53
▼ S&P/BVL SEL (Perú)	362.15	-0.14%	-1.88%	-2.35%	-1.60%	87.29
▼ S&P/BVL LIMA 25	27,517.84	-1.17%	-3.54%	-6.15%	-10.56%	93.63
▲ IPC (México)	49,344.05	1.14%	0.50%	0.89%	-0.02%	313.60
▲ S&P MILA 40	666.09	0.14%	-1.92%	-5.20%	-8.64%	290.37

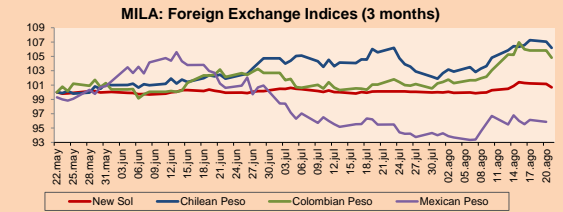
* Market Cap. Of the last price Legend: Variation 1D: 1 day; 5D: 5 days; 1M: 1 Month; YTD: Var%12/31/17 to date



Source: Bloomberg

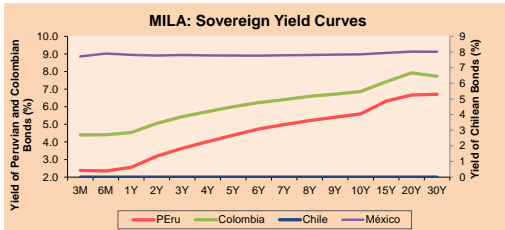
Currency	Price	1D*	5D*	30 D*	YTD*
▼ New Sol (PEN)	3,294.0	-0.47%	-0.18%	0.57%	1.74%
▼ Chilean Peso (CLP)	663.52	-0.80%	-0.23%	0.59%	7.81%
▼ Colombian Peso (COP)	2,990.96	-0.96%	-0.39%	3.71%	0.14%
▼ Mexican Peso (MXN)	18.96	-0.28%	0.39%	-0.36%	-3.58%

*Legend: Variation 1D: 1 day; 5D: 5 days; 1M: 1 Month; YTD: Var%12/31/17 to date



Base: 22/05/18=100 Source: Bloomberg

Instrument	Currency	Price	Bid Yield (%)	Ask Yield (%)	Duration
PERU 4.125 08/25/2027	USD	103.652	3.66	3.63	7.39
PERU 7.125 03/30/19	USD	102.98	2.36	1.88	0.58
PERU 7.35 07/21/25	USD	122.928	3.60	3.55	5.58
PERU 8.75 11/21/33	USD	148.643	4.37	4.33	9.58
PERU 6.55 03/14/37	USD	127.243	4.41	4.37	11.06
PERU 5.625 11/19/2050	USD	119.725	4.48	4.45	16.11
CHILE 2.25 10/30/22	USD	95.682	3.39	3.33	3.93
CHILE 3.875 08/05/20	USD	101.855	2.94	2.84	1.87
CHILE 3.625 10/30/2042	USD	93.63	4.05	4.03	15.59
COLOM 11.75 02/25/20	USD	112.587	3.20	3.06	1.34
COLOM 11.85 03/09/28	USD	156.444	4.55	4.47	6.36
COLOM 10.375 01/28/33	USD	154.525	5.06	4.98	8.81
COLOM 7.375 09/18/37	USD	127.725	5.10	5.07	11.00
COLOM 6.125 01/18/41	USD	114.405	5.06	5.03	12.79
MEX 4 10/02/23	USD	100.452	3.93	3.87	4.52
MEX5.55 01/45	USD	107.22	5.069	5.034	14.2



Source: Bloomberg

Equity	Exchange	Amt.	Price	▲%	Largest losses	Exchange	Amt.	Price	▼%
ATACOCB1	Lima	PEN	0.38	5.56	GRAMONC1	Lima	PEN	2.15	-8.51
VAPORES	Santia.	CLP	19.80	4.49	BBV	Lima	USD	6.37	-7.81
TEF	Lima	USD	8.45	4.32	BVLBC1	Lima	PEN	2.60	-3.70
BVN	Lima	USD	12.66	3.52	CVERDEC1	Lima	USD	23.00	-2.95

Per Turnover	Exchange	Amount (US\$)	Per Volume	Exchange	Volume
CCU	Santia.	18,067,308	BSANTANDER	Santia.	89,853,989
SOM-B	Santia.	14,712,200	VAPORES	Santia.	87,129,704
ECOPETROL	Colomb.	13,390,985	ORO BLANCO	Santia.	42,749,626
FALABELLA	Santia.	12,376,873	CHILE	Santia.	34,237,315
PFDAVNDA	Colomb.	11,102,288	NORTEGRAN	Santia.	13,272,244

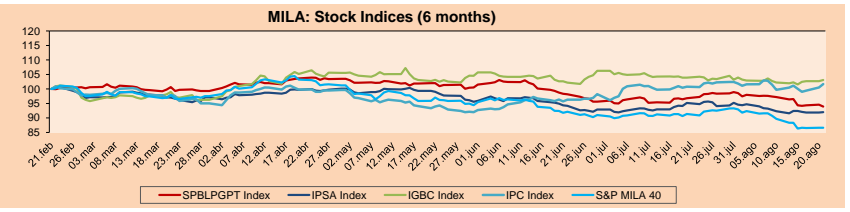
MILA

Peru: The General Index of the BVL of Peru ended today's session with a negative result of -0.71%. The index maintains a negative annual accumulated trend of -2.65% in local currency, while the adjusted yield in dollars amounts to -4.31%. Then, the S&P/BVL Peru SEL obtained a negative yield of -0.78%, while the S&P/BVL LIMA 25 increased by -1.17%. The spot PEN reached 5 / 3.2899. **Highlight:** The Peruvian currency appreciated in the midst of a sharp decline in the dollar after criticism from President Trump to the FED.

Chile: The IPSA index ended the day with a positive return of +0.19%. The sectors of the index with the most positive results were Telecommunications Services (+1.29%) and Non-Basic Consumption Products (+0.65%). On the other hand, the values with the highest results were Compañías Sud Americanas de Vapo (+4.49%) and Sigdo Koppers SA (+2.91%). **Highlight:** Advance of the Chilean stock exchange limited by the fall of LATAM airline

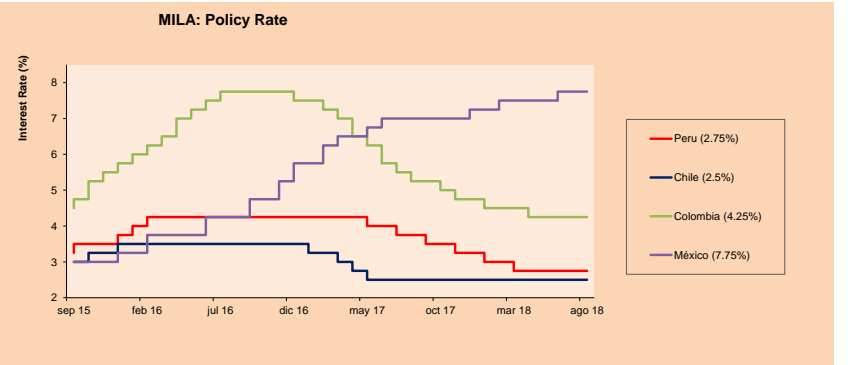
Colombia: The COLCAP index closed the session with a positive result of +0.30%. The sectors with the highest upward performance were Energy (+1.42%) and Telecommunications Services (+1.11%). In addition, the stocks with the highest yields were Promigas (+1.68%) and Ecopetrol (+1.45%). **Highlight:** The currency, the domestic public debt and the stock market recovered, encouraged by the price of crude and comments by Trump regarding the FED rate.

Mexico: Mexico's IPC index closed today's session with a positive return of +1.14%. The sectors of the index that generated the most positive results were Telecommunications Services (+2.69%) and Finance (+2.10%). Finally, the stocks with the highest yields were Grupo Carso SAB de CV (+3.38%) and Controladora Vuelva Cia de Avia (+3.36%). **Highlight:** Mexican peso wins by withdrawal of dollar after comments from Trump, stock exchange exceeds 49,300 points.



Base: 22/02/18=100 Source: Bloomberg

ETFs	Curr.	Close	1D	5D	30 D	YTD	Exchange
▼ iShares MSCI All Peru Capped Index Fund	USD	37.31	-0.13%	-2.41%	-5.28%	-8.96%	NYSE Arca
▲ iShares MSCI Chile Capped	USD	44.41	0.63%	-0.74%	-4.45%	-14.86%	Cboe BZX
▲ Global X MSCI Colombia	USD	14.34	1.70%	0.75%	-5.72%	-0.67%	NYSE Arca
▲ iShares MSCI Mexico Capped	USD	50.83	1.62%	0.28%	0.69%	3.12%	NYSE Arca
▲ iShares MSCI Emerging Markets	USD	42.94	1.27%	0.47%	-2.32%	-8.87%	NYSE Arca
▲ Vanguard FTSE Emerging Markets	USD	41.97	1.08%	0.10%	-2.19%	-8.58%	NYSE Arca
▲ iShares Core MSCI Emerging Markets	USD	51.92	1.19%	0.41%	-2.33%	-8.75%	NYSE Arca
▼ iShares JP Morgan Emerging Markets Bonds	USD	58.79	0.98%	0.86%	-0.27%	-3.24%	Cboe BZX
▼ Morgan Stanley Emerging Markets Domestic	USD	6.69	-0.45%	-1.04%	-1.62%	-13.12%	New York



Source: Bloomberg

Capital Market Laboratory Coordinator: Economist Bruno Bellido Anicama
Support: Lith Fernandez, Samuel Machacuay, Maria Pia Quijano, Jorge Retamozo
e-mail: pulsobursatil@ulima.edu.pe
facebook: www.facebook.com/pulsobursatil.ul
Phone number : 4376767 Annexes: 35340 - 35310

PULSO BURSÁTIL

WORLD

Table with columns: Main Indices, Close, 1 D, 5 D, 1 M, YTD, Market Cap. (US\$ Mill.)
Includes indices like Dow Jones (USA), Standard & Poor's 500 (USA), NASDAQ Composite (USA), etc.

Equity

Wall Street (Stocks from S&P 500)

Table with columns: Largest gains, Curr., Price, Exchange, Largest losses, Curr., Price, Exchange
Includes CDNS UW, TTWO UW, TWTR UN, APTV UN.

Europe (Stocks from STOXX EUROPE 600)

Table with columns: Largest gains, Curr., Price, Exchange, Largest losses, Curr., Price, Exchange
Includes KAZ LN, OLI LN, TEP FP, ATE FP.

Global Overview:

United States:

The US market ended the day recording its fourth positive day in a row, setting a record for the longest bull market in history, backed by optimism about the US-China talks, economic growth and healthy corporate quarterly results.

Europe:

European markets ended the day on Tuesday with positive results among its main indices. In the region, the Stoxx Europe 600 closed upwards with +0.24%.

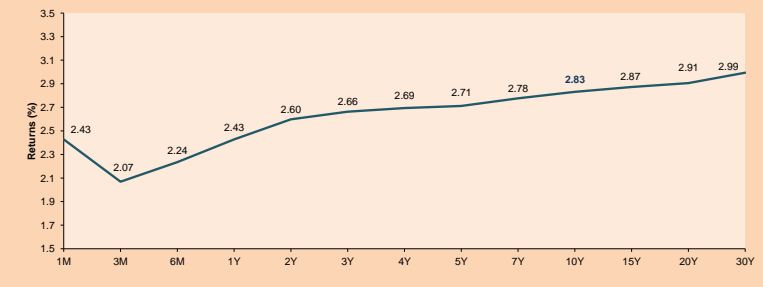
Asia:

The Asian market finished the session with upward results among its main indices. In China, both the Shanghai Composite and Hang Seng of Hong Kong ended the session with positive results.

ETFs

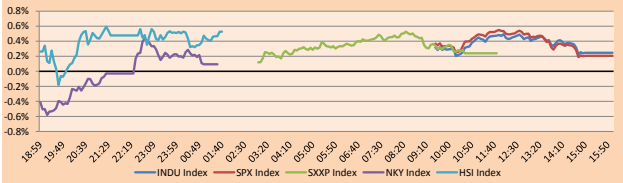
Table with columns: ETF Name, Curr., Close, 1D, 5D, 30D, YTD, Exchange
Includes SPDR S&P 500 ETF TRUST, ISHARES MSCI EMERGING MARKET, etc.

USA Treasury Bonds Yield Curve (%)



Source: Bloomberg

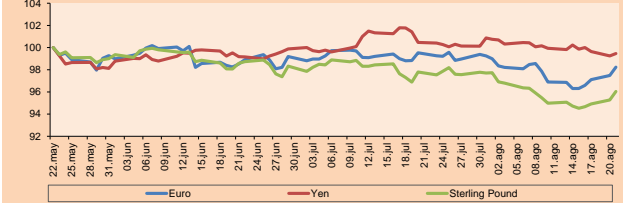
Global Markets: Intraday Evolution (var %)



Source: Bloomberg

Table with columns: Currency, Price, 1 D, 5 D, 1 M, YTD
Includes Euro, Yen, Sterling Pound, Yuan, Hong Kong Dollar, Brazilian Real, Argentine Peso.

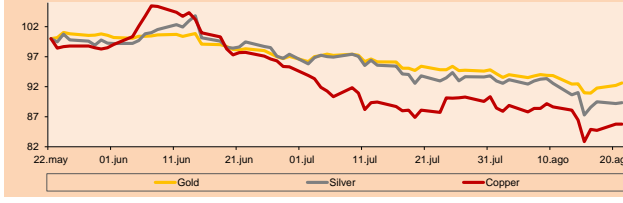
Foreign Exchange Indices (3 months)



Base: 22/05/18=100
Source: Bloomberg

Table with columns: Commodities, Close, 1 D, 5 D, 1 M, YTD
Includes Oro (US\$ Oz. T) (LME), Plata (US\$ Oz. T) (LME), Cobalt (US\$ TM) (LME), etc.

Principal Metals Index (3 months)



Base: 22/05/18=100
Source: Bloomberg

Capital Market Laboratory Coordinator: Economist Bruno Bellido Anicama
Support: Lith Fernandez, Samuel Machacuay, Maria Pia Quijano, Jorge Retamazo
e-mail: pulsobursatil@ulima.edu.pe
facebook: www.facebook.com/pulsobursatil.ul
Phone number : 4376767 Annexes: 35340 - 35310



PULSO BURSÁTIL

LIMA

Stocks

Ticker	Currency	Price	1D*	5D*	30D*	YTD*	Frequency	Volume (US\$)	Beta	Dividend Yield (%)	Price Earning	Market Cap. (M US\$)	Economic Sector*	Index Weight
▼ ALICORC1 PE**	S/.	11.02	-0.72%	-2.04%	-3.33%	3.96%	100.00%	3,497,793	0.57	2.18	19.86	2,858.98	Industrial	3.53%
▲ ATACOBC1 PE**	S/.	0.38	5.56%	0.00%	-11.63%	-44.12%	100.00%	25,219	1.63	0.00	-	108.99	Mining	1.02%
- BACKUSI1 PE**	S/.	22.00	0.00%	0.00%	0.46%	19.50%	55.00%	935	0.39	0.00	8.96	8,993.66	Industrial	0.82%
▼ BAP PE**	US\$	220.30	-1.03%	-1.83%	-4.09%	5.91%	100.00%	877,651	1.07	4.15	-	17,571.45	Diverse	5.82%
▲ BVN PE**	US\$	12.66	3.52%	-5.03%	-1.48%	-10.34%	90.00%	103,812	1.64	0.45	-	3,489.53	Mining	5.88%
- CASAGRC1 PE**	S/.	3.80	0.00%	0.00%	-9.31%	-38.61%	100.00%	23,476	0.87	11.12	10.15	97.17	Agricultural	1.31%
▲ CONTINC1 PE**	S/.	4.10	0.24%	1.23%	-1.68%	8.61%	95.00%	122,084	0.36	3.47	15.57	6,682.23	Finance	2.85%
▲ CORAREI1 PE**	S/.	0.73	1.39%	0.00%	-3.95%	1.39%	100.00%	18,505	0.88	6.35	6.26	319.03	Industrial	1.72%
▼ CPACASC1 PE**	S/.	7.10	-1.39%	-5.84%	-9.55%	-12.88%	100.00%	222,516	0.53	4.93	33.50	921.34	Industrial	2.38%
▼ CVERDEC1 PE**	US\$	23.00	-2.95%	-6.20%	-6.08%	-22.56%	95.00%	147,543	1.18	2.48	20.70	8,051.29	Mining	5.25%
- ENGEPEC1 PE**	S/.	2.05	0.00%	0.00%	-2.38%	3.54%	60.00%	317,939	0.75	0.00	9.78	1,800.52	Public Services	1.44%
▼ ENDISPC1**	S/.	5.80	-4.13%	-4.92%	-1.69%	2.84%	35.00%	153,832	0.77	3.69	10.89	1,124.37	Public Services	0.98%
▼ FERREYC1 PE**	S/.	2.30	0.00%	-3.77%	-4.17%	-9.80%	100.00%	1,461,467	0.77	5.89	9.14	681.26	Diverse	4.90%
▼ GRAMONC1 PE**	S/.	2.15	-8.51%	-8.51%	-17.31%	14.97%	55.00%	72,459	0.52	0.00	-	430.82	Diverse	4.05%
▼ IFS PE**	US\$	40.90	-1.92%	-2.15%	1.49%	6.23%	80.00%	329,638	0.48	3.42	15.42	4,626.23	Diverse	7.22%
▼ INRETC1 PE**	US\$	25.10	-1.57%	-2.30%	-1.57%	19.52%	100.00%	163,050	1.00	0.00	51.85	2,580.46	Diverse	5.28%
- LUSURC1 PE**	S/.	12.00	0.00%	0.08%	0.42%	0.42%	100.00%	82,237	0.44	5.50	12.74	1,773.96	Public Services	1.81%
▼ MILPOC1 PE**	S/.	4.30	-2.05%	-6.11%	0.47%	-6.52%	75.00%	146,820	1.35	19.93	6.88	1,724.84	Mining	1.56%
- MINSUR1 PE**	S/.	1.37	0.00%	-2.84%	-1.44%	-23.89%	70.00%	84,883	1.34	5.03	16.73	1,199.06	Mining	3.09%
- PML PE**	US\$	0.18	0.00%	-5.26%	-12.20%	-43.75%	90.00%	11,250	1.84	0.00	-	47.30	Mining	2.12%
- RELAPAC1 PE**	S/.	0.18	0.00%	-2.17%	-13.04%	-41.94%	100.00%	64,500	1.35	0.00	3.54	193.16	Industrial	2.12%
▲ SCCO PE**	US\$	44.19	0.43%	-3.62%	0.43%	-7.09%	60.00%	82,705	2.83	19.17	19.17	34,160.83	Mining	2.14%
- SIDERC1 PE**	S/.	0.62	0.00%	-4.62%	-12.68%	29.17%	95.00%	18,069	1.30	0.00	5.65	231.12	Industrial	1.43%
▲ TV PE**	US\$	0.54	1.89%	3.85%	-12.90%	-55.00%	95.00%	92,770	1.60	0.00	-	448.54	Mining	2.93%
▼ UNACEMC1 PE**	S/.	2.59	-1.15%	-5.47%	-9.44%	-13.67%	85.00%	566,246	0.65	2.01	23.33	1,294.61	Industrial	3.00%
▲ VOLCABC1 PE**	S/.	0.74	1.37%	-3.90%	-13.95%	-43.94%	100.00%	711,553	1.76	3.69	-	915.81	Mining	5.90%

Quantity of shares: 26

Source: Bloomberg, Economática

* Bloomberg Industry Classification System

** PER is used in the stock market and original currency of the instrument

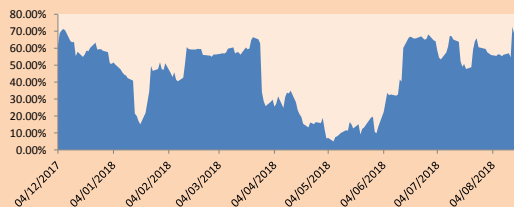
*Legend: Variation 1D: 1 Day; 5D: 5 Days; 1M: 1 Month; YTD: Var.% 12/31/17 to date

Sectorial Indices

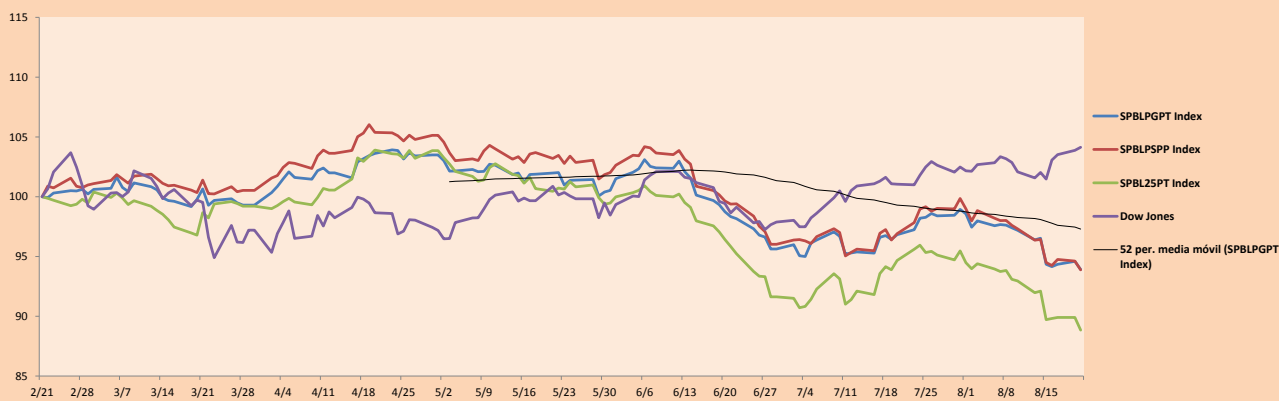
	Close	1D*	5D*	30D*	YTD*	Beta
▲ Mining Index	301.45	0.74%	-3.98%	-1.63%	-15.20%	1.67
▼ Consumer Index	1,014.66	-0.93%	-1.52%	-1.52%	12.53%	0.30
▼ Industrial Index	225.22	-1.90%	-5.00%	-8.36%	-4.55%	0.50
▼ Banking and Financial Index	1,166.37	-1.51%	-1.96%	-3.22%	9.09%	1.13
▼ Construction Index	254.58	-2.92%	-5.85%	-10.30%	-3.98%	0.35
▼ Services Index	427.66	-0.78%	-0.99%	-0.42%	2.66%	0.17
▼ Juniors Index	31.18	-0.42%	-2.65%	-3.11%	-28.86%	0.45
▼ Electric Index	417.51	-0.78%	-0.99%	-0.42%	2.66%	0.17

*Legend: Variation 1D: 1 Day; 5D: 5 Days; 1M: 1 Month; YTD: Var.% 12/31/17 to date

Correlation Graph of Returns of Mining Index against Metallic Index of London (3 months)



Indices (6 months)



Source: Bloomberg

Capital Market Laboratory Coordinator: Economist Bruno Bellido Anicama
 Support: Lith Fernandez, Samuel Machacuy, María Pia Quijano, Jorge Retamozo
 e-mail: pulsobursatil@ulima.edu.pe
 facebook: www.facebook.com/pulsobursatil.ul
 Phone number : 4376767 Annexes: 35340 - 35310

The content of this document is just for informational purposes. The information and opinions expressed should not be consider as recommendations for future decisions. Under any circumstances, the Capital Market Laboratory of University of Lima will be responsible for the use of the statements in this document.

PULSO BURSÁTIL

SOVEREIGN RATING

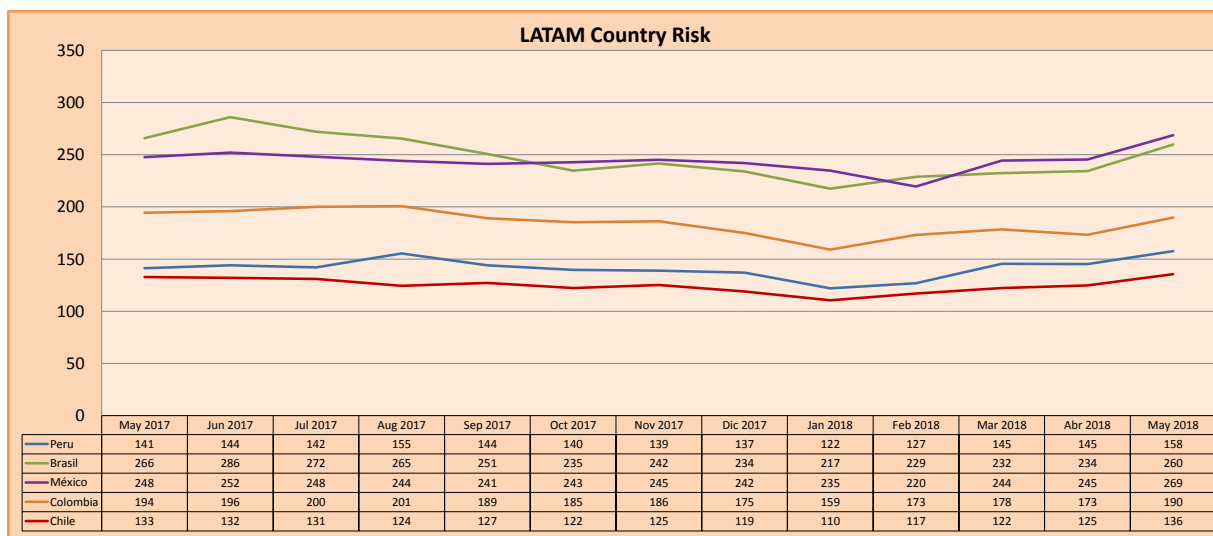
RISK RATINGS

Moody's	S&P	Fitch	
Aaa	AAA	AAA	Prime
Aa1	AA+	AA+	High credit quality
Aa2	AA	AA	
Aa3	AA-	AA-	
A1	A+	A+	Medium-high grade, with low credit risk
A2	A	A	
A3	A-	A-	
Baa1	BBB+	BBB+	Moderate Credit Risk
Baa2	BBB	BBB	
Baa3	BBB-	BBB-	
Ba1	BB+	BB+	It has speculative elements and it is subject to substantial credit risk
Ba2	BB	BB	
Ba3	BB-	BB-	
B1	B+	B+	It is considered speculative and it has high credit risk
B2	B	B	
B3	B-	B-	
Caa1	CCC+	CCC	Bad credit conditions and it is subject to high credit risk
Caa2	CCC	CCC	
Caa3	CCC-	CCC	
Ca	CC	C	Very close to default or in default
C	D	DD	
		D	

Source: Bloomberg

Latin America Credit Rating			
Clasificadora de riesgo			
Country	Moody's	Fitch	S&P
Peru	A3	BBB+	BBB+
Mexico	A3	BBB+	BBB+
Venezuela	C	C	SD
Brazil	Ba2	BB-	BB-
Colombia	Baa2	BBB	BBB-
Chile	A1	A	A+
Argentina	B2	B	B+
Panama	Baa2	BBB	BBB

Source: Bloomberg



Source: Bloomberg

Capital Market Laboratory Coordinator: Economist Bruno Bellido Anicama
 Support: Lith Fernandez, Samuel Machacuay, Maria Pia Quijano, Jorge Retamozo
 e-mail: pulsobursatil@ulima.edu.pe
 facebook: www.facebook.com/pulsobursatil.ul
 Phone number : 4376767 Annexes: 35340 - 35310

The content of this document is just for informational purposes. The information and opinions expressed should not be considered as recommendations for future decisions. Under any circumstances, the Capital Market Laboratory of University of Lima will be responsible for the use of the statements in this document.