

# PULSO BURSÁTIL

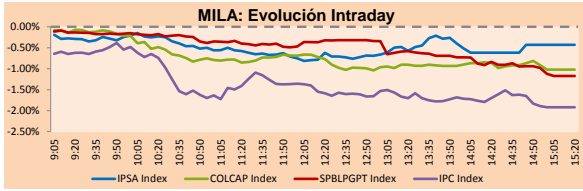
Lima, October 18, 2018

## MILA

Main Indices	Close	1 D	5 D	1 M	YTD	Market Cap. (US\$ bill)
▼ IPSA (Chile)	5,119.06	-0.43%	-2.17%	-4.40%	-8.01%	164.70
▼ IGPA (Chile)	26,108.03	-0.44%	-2.07%	-3.68%	-6.69%	222.00
▼ IGBC (Colombia)	12,513.10	-0.70%	0.84%	1.25%	9.02%	113.11
▼ COLCAP (Colombia)	1,461.26	-1.02%	-1.25%	-3.21%	-3.46%	116.43
▼ S&P/BVL (Perú)*	19,060.54	-1.19%	-0.89%	0.93%	-4.58%	107.55
▼ S&P/BVL SEL (Perú)	353.94	-0.54%	-0.20%	2.31%	-3.83%	83.22
▼ S&P/BVL LIMA 25	25,691.13	-1.94%	-3.85%	-1.75%	-16.50%	89.58
▼ IPC (México)	47,024.46	-1.80%	-1.12%	-5.31%	-4.72%	300.77
▼ S&P MILA 40	653.13	-0.60%	1.16%	-1.12%	-10.42%	296.09

\* Market Cap. Of the last price

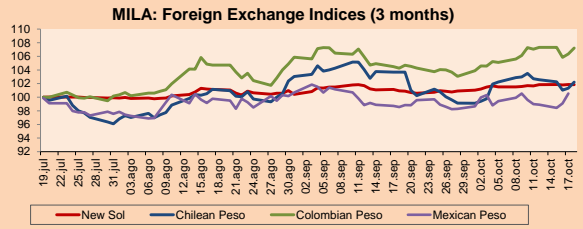
Legend: Variation 1D: 1 day, 5D: 5 days, 1M: 1 Month, YTD: Var%12/31/17 to date



Source: Bloomberg

Currency	Price	1D*	5D*	30 D*	YTD*
▼ New Sol (PEN)	3,3347	-0.02%	0.23%	0.89%	2.99%
▲ Chilean Peso (CLP)	677.18	0.88%	-0.50%	-1.43%	10.03%
▲ Colombian Peso (COP)	3,092.35	0.82%	0.16%	2.83%	3.53%
▲ Mexican Peso (MXN)	19.15	1.47%	0.93%	1.86%	-2.56%

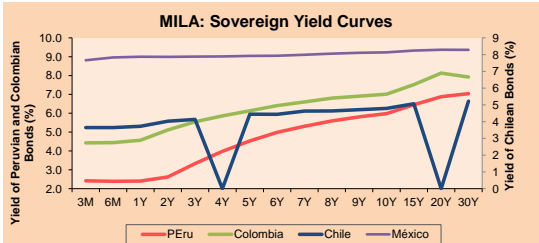
\* Legend: Variation 1D: 1 day, 5D: 5 days, 1M: 1 Month, YTD: Var%12/31/17 to date



Base: 19/07/18=100

Source: Bloomberg

Instrument	Currency	Price	Bid Yield (%)	Ask Yield (%)	Duration
PERU 4.125 08/25/2027	USD	101.044	4.01	3.96	7.35
PERU 7.125 03/30/19	USD	102.057	2.63	2.13	0.44
PERU 7.35 07/21/25	USD	120.959	3.82	3.78	5.42
PERU 8.75 11/21/33	USD	144.289	4.65	4.62	9.35
PERU 6.55 03/14/37	USD	122.972	4.69	4.66	11.09
PERU 5.625 11/18/2050	USD	113.108	4.83	4.80	15.60
CHILE 2.25 10/30/22	USD	95.497	3.51	3.41	3.77
CHILE 3.875 08/05/20	USD	101.387	3.16	2.98	1.72
CHILE 3.625 10/30/2042	USD	90.084	4.31	4.27	15.27
COLOM 11.75 02/25/20	USD	111.045	3.33	3.19	1.26
COLOM 11.85 03/09/28	USD	152.869	4.82	4.75	6.42
COLOM 10.375 01/28/33	USD	149.358	5.41	5.34	8.63
COLOM 7.375 09/18/37	USD	122.681	5.45	5.43	11.01
COLOM 6.125 01/18/41	USD	109.387	5.41	5.38	12.44
MEX 4 10/02/23	USD	99.962	4.04	3.98	4.46
MEX5.55 01/45	USD	102.351	5.389	5.373	13.82



Source: Bloomberg

Equity	Exchange	Amt.	Price	▲%
<b>Largest gains</b>				
GRAMONC1	Lima	PEN	1.95	7.14
SALFACORP	Santia.	CLP	1068.70	3.69
ALMENDRAL	Santia.	CLP	41.94	2.92
HIPICO	Santia.	CLP	18000000.00	2.86
<b>Per Turnover</b>				
BCOLOMBIA	Colomb.	Amount (US\$)	18,859,440	
ECOPETROL	Colomb.	Amount (US\$)	14,068,213	
SQM-B	Santia.	Amount (US\$)	12,613,395	
FLABELLA	Santia.	Amount (US\$)	12,159,176	
BSANTANDER	Santia.	Amount (US\$)	9,528,261	

Largest losses	Exchange	Amt.	Price	▼%
CAMPOS	Santia.	CLP	20.20	-14.44
ATACOCBC1	Lima	PEN	0.38	-10.82
INVERNOVA	Santia.	CLP	9.72	-7.60
TV	Lima	USD	0.51	-7.27
<b>Per Volume</b>				
BSANTANDER	Santia.	Exchange	Volume	
CHILE	Santia.	Volume	23,999,182	
VAPORES	Santia.	Volume	20,666,806	
ECOPETROL	Colomb.	Volume	11,056,166	
EEB	Colomb.	Volume	8,071,707	

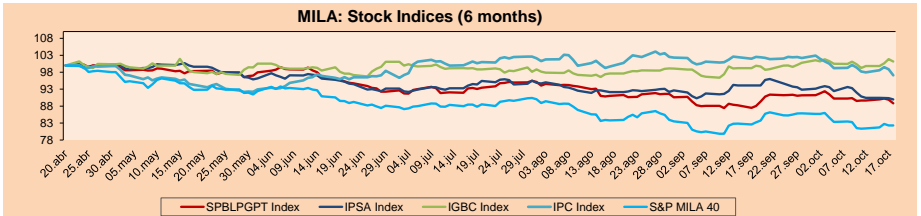
## MILA

**Peru:** The General Index of the BVL of Peru ended today's session with a negative result of -1.17%. The index maintains an accumulated annual negative trend of -4.56% in local currency, while the adjusted yield in dollars amounts to -7.33%. Then, the S & P / BVL Peru SEL obtained a negative yield of -1.09%, while the S & P / BVL LIMA 25 decreased by -1.93%. The spot PEN reached S / 3.3336. **Highlight:** Key Peruvian stock index closes at a minimum of one month following external markets and base metals.

**Chile:** The IPSA index ended the day with a negative yield of -0.43%. The sectors of the index with the most negative results were Communication Services (-1.33%) and Industrial Services (-1.06%). On the other hand, the securities with the lowest results were Lan Airlines SA (-1.94%) and Empresa Nacional de Electricidad (-1.91%). **Highlight:** The Central Bank of Chile raises reference rate for the first time in almost three years to 2.75%.

**Colombia:** The COLCAP index closed the session with a negative result of -1.02%. Communication Services (-3.30%) and Finance (-1.81%) were the sectors with the highest performance. In addition, the stocks with the highest yields were Empresa de Telecomunicaciones (-3.30%) and Grupo de Inversiones Suramerica (-1.46%). **Highlight:** The Colombian Senate approved the total budget of 259 T pesos (\$ 90), representing an increase of 11% compared to this year.

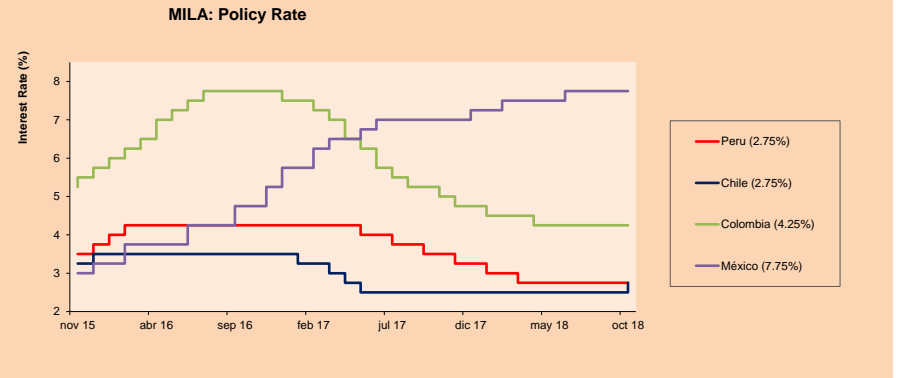
**Mexico:** The IPC index of Mexico closed the day today with a negative yield of -1.80%. The sectors of the index that generated the most negative results were Communication Services (-3.62%) and Materials (-3.27%). Finally, the stocks with the lowest yields were Gruma SAB de CV (-4.93%) and Cemex SAB de CV (-4.31%). **Highlight:** Mexico's plan to end oil exports is negative for credit: Moody's.



Base: 23/04/18=100

Source: Bloomberg

ETFs	Curr.	Close	1D	5D	30 D	YTD	Exchange
▼ iShares MSCI All Peru Caped Index Fund	USD	36.03	-1.40%	-1.37%	0.81%	-12.08%	NYSE Arca
▼ iShares MSCI Chile Capped	USD	42.65	-1.39%	-0.02%	-5.29%	-18.23%	Cboe BZX
▼ Global X MSCI Colombia	USD	13.08	-2.10%	0.23%	-5.01%	-9.40%	NYSE Arca
▼ iShares MSCI Mexico Capped	USD	47.52	-3.32%	-2.06%	-7.24%	-3.59%	NYSE Arca
▼ iShares MSCI Emerging Markets	USD	39.3	-2.63%	0.41%	-6.38%	-16.60%	NYSE Arca
▼ Vanguard FTSE Emerging Markets	USD	37.74	-2.61%	-0.05%	-7.36%	-17.80%	NYSE Arca
▼ iShares Core MSCI Emerging Markets	USD	47.46	-2.67%	0.36%	-6.54%	-16.59%	NYSE Arca
▼ iShares JP Morgan Emerging Markets Bonds	USD	54.78	-2.11%	-0.45%	-5.86%	-9.84%	Cboe BZX
▼ Morgan Stanley Emerging Markets Domestic	USD	6.65	-0.89%	4.23%	1.84%	-13.64%	New York



Source: Bloomberg



# PULSO BURSÁTIL

## WORLD

Main Indices	Close	1 D*	5 D*	1 M*	YTD*	Market Cap. (US\$ MIL.)
▼ Dow Jones (USA)	25,379.45	-1.27%	1.30%	-3.31%	2.67%	7,192,823
▼ Standard & Poor's 500 (USA)	2,768.78	-1.44%	1.48%	-4.67%	3.56%	24,617,874
▼ NASDAQ Composite (USA)	7,485.14	-2.06%	2.13%	-5.92%	8.43%	11,953,647
▼ Stoxx EUROPE 600 (Europe)	361.67	-0.51%	0.56%	-4.50%	-7.07%	8,518,105
▼ DAX (Germany)	11,589.21	-1.07%	0.43%	-4.68%	-10.28%	935,694
▼ FTSE 100 (United Kingdom)	7,028.99	-0.39%	0.29%	-3.74%	-8.60%	1,487,088
▼ CAC 40 (France)	5,116.79	-0.55%	0.20%	-4.60%	-3.69%	1,325,132
▼ IBEX 35 (Spain)	8,889.60	-1.20%	-1.31%	-5.91%	-11.49%	484,405
▲ MSCI AC Asia Pacific Index	154.55	0.77%	1.64%	-4.55%	-11.08%	16,674,720
▼ HANG SENG (Hong Kong)	25,454.55	-0.03%	-2.82%	-7.13%	-14.92%	2,388,214
▼ SHANGHAI SE Comp. (China)	2,486.42	-2.94%	-3.76%	-8.95%	-24.82%	3,634,353
▼ NIKKEI 225 (Japan)	22,658.16	-0.80%	0.30%	-4.28%	-0.47%	3,438,103
▼ BOVESPA (Brazil)	83,847.12	-2.24%	0.20%	7.07%	9.74%	700,317
▼ Merval (Argentina)	28,370.45	-1.22%	-0.63%	-11.64%	-5.64%	102,163

\*Legend: Variation 1D: 1 Day; 5D: 5 Days; 1M: 1 Month; YTD: Var.% 12/31/17 to date

## Equity

Alemania (Acciones del DAX Index)

Largest gains	Curr.	Price	▲ %	Exchange	Largest losses	Curr.	Price	▼ %	Exchange
DB1 GY	EUR	111.95	1.45	Xetra	SAP GY	EUR	94.38	-5.94	Xetra
BAYN GY	EUR	78.42	1.34	Xetra	IFX GY	EUR	18.19	-4.34	Xetra
DTE GY	EUR	14.55	1.08	Xetra	WDI GY	EUR	170.45	-3.70	Xetra
LHA GY	EUR	19.1	0.82	Xetra	FRE GY	EUR	60.52	-3.66	Xetra

Europe (Stocks from STOXX EUROPE 600)

Largest gains	Curr.	Price	▲ %	Exchange	Largest losses	Curr.	Price	▼ %	Exchange
CA FP	CHF	17.03	9.34	EN Paris	ELISA FH	EUR	34.41	-7.48	Helsinki
ERICB SS	SEK	82.82	6.18	Stockholm	WAF GY	EUR	92	-7.30	Xetra
TEMN SE	CHF	139.4	5.61	SIX Swiss Ex	AMS SE	CHF	48.28	-6.76	SIX Swiss Ex
AF FP	EUR	8.478	4.80	EN Paris	SAB SQ	EUR	1.1775	-6.70	Soc.Bol SIBE

## Global Overview:

### United States:

The US stock market ended the day with negative results, impacted by the European Commission's warning over the Italian budget and the notion of cooling relations between US and Saudi Arabia. The Dow Jones industrial average closed at 25379.45 points, which represents a variation of -1.27% with respect to the previous closing, of the 30 Blue Chip shares that make up the index, only 6 ended in positive territory. When incorporating the result of today, the cumulative performance in the year of the index is only +2.67%, when on October 3 it stood at +8.53%. The sector with the best performance was Information Technology (-2.20%), and the Energy segment (+0.27%) was the only one with positive results in the session. The S&P 500 index lost 1.44%, which represents the worst day since October 10, the stock with the worst performance was United Rentals (-15.04%) which had the highest variation in 2 years, the company is at its lowest level in more than a year only one day after submitting its earnings report.

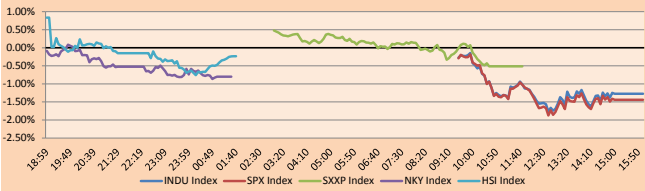
### Europe:

The European stock market closed the session in negative after rising sessions for corporate profits higher than expected. The Stoxx Europe 600 (-0.51%) closed downward, also the FTSE 100 (-0.39%) fell while concerns about the Brexit continue to affect the markets. For both indices, it was the worst fall in a week. On the other hand, the Euro depreciated slightly from \$1.1502 to \$1.1470 on the last Wednesday in New York, similar to the Pound Sterling which fell from \$1.3114 to \$1.3304. European stocks tend to follow the performance of US stocks, thus explaining the low performance of the session. Although, yesterday closed higher thanks to optimistic profit results, on Thursday the situation turned around as US actions in the technology and communication services sector entered the red zone. Yesterday in Brussels the British prime minister, Theresa May, suggested the possibility of an extension of the Brexit, that is to say that it could be that Great Britain remains under the norms of the EU until 2021 or more. In corporate news, Unilever PLC shares fell -0.93% even after selling their products at a higher price allowing for an increase in their third quarter earnings.

### Asia:

The Asian market finished the day with negative results among its main indices as a response to the expectations of the rise in the reference interest rates in the United States. In Japan as in Hong Kong, the Energy sector was the one that had the most disappointing performances, -2.59% and -4.38% respectively, causing the Nikkei (-0.80%) and Hang Seng (-0.03%) declines. The Shanghai Composite was the most affected and closed at -2.94%. In other news, Japan will initiate a 1-year investigation into Japanese and Taiwanese exporters following a claim by several Chinese companies for machinery dumping, which caused the fall of the manufacturers' shares, and it is feared that it could complicate the commercial situation with China. On the other hand, Alibaba announced that it will invest 2 billion yuan in the liquor importer 1919 to cover the growing demand for wine in China, so that it can become the second largest wine market in the world in the next 5 years, in addition to acquiring 39.3 million shares of the company. Finally, along with the plan to boost economic growth through credits, the Industrial and Commercial Bank of China signed agreements with 100 private companies to provide more financial support.

Global Markets: Intraday Evolution (var %)



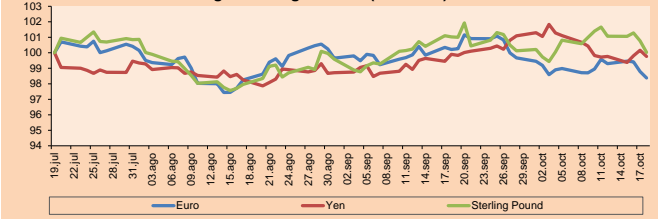
Source: Bloomberg

## Currency

	Price	1 D*	5 D*	1 M*	YTD*
▼ Euro	1.1453	-0.42%	-1.21%	-1.83%	-4.60%
▼ Yen	112.2100	-0.39%	0.04%	-0.13%	-0.43%
▼ Sterling Pound	1.3018	-0.74%	-1.60%	-0.99%	-3.66%
▲ Yuan	6.9376	0.15%	0.69%	1.11%	6.82%
▲ Hong Kong Dollar	7.8383	-0.01%	0.05%	-0.06%	0.31%
▲ Brazilian Real	3.7214	0.92%	-1.58%	-10.62%	12.48%
▲ Argentine Peso	36.6041	1.07%	0.01%	-7.95%	96.55%

\*Legend: Variation 1D: 1 Day; 5D: 5 Days; 1M: 1 Month; YTD: Var.% 12/31/17 to date

Foreign Exchange Indices (3 months)



Base: 19/07/18=100

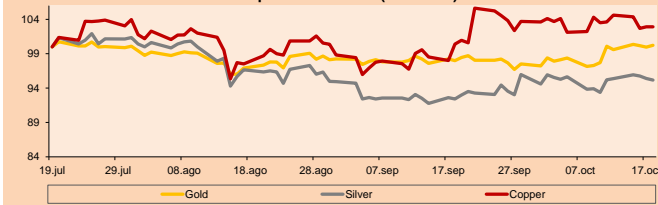
Source: Bloomberg

## Commodities

	Close	1 D*	5 D*	1 M*	YTD*
▲ Oro (US\$ Oz. T) (LME)	1,225.80	0.28%	0.14%	2.29%	-5.93%
▲ Plata (US\$ Oz. T) (LME)	14.57	-0.24%	-0.05%	2.97%	-13.96%
- Cobre (US\$ TM) (LME)	6,216.00	0.00%	-0.68%	2.51%	-13.75%
- Zinc (US\$ TM) (LME)	2,710.50	0.00%	2.92%	16.53%	-18.79%
▼ Petróleo WTI (US\$ Barril) (NYM)	68.65	-1.58%	-3.27%	-1.35%	17.59%
- Estafío (US\$ TM) (LME)	19,088.00	0.00%	-0.90%	0.36%	-5.02%
- Plomo (US\$ TM) (LME)	2,031.50	0.00%	0.82%	-1.65%	-18.24%
- Molibdeno (US\$ TM) (LME)	24,881.00	0.00%	-0.02%	-0.04%	59.11%
▲ Azúcar #11 (US\$ Libra) (NYB-ICE)	13.87	1.02%	7.35%	20.61%	-11.60%
▲ Cacao (US\$ TM) (NYB-ICE)	2,145.00	-3.64%	2.29%	-4.33%	10.51%
▼ Café Arábica (US\$ TM) (NYB-ICE)	122.05	-0.41%	8.10%	27.33%	-10.72%

\*Legend: Variación 1D: 1 Día; 5D: 5 Días; 1M: 1 Mes; YTD: Var.% 31/12/17 a la fecha

Principal Metals Index (3 months)



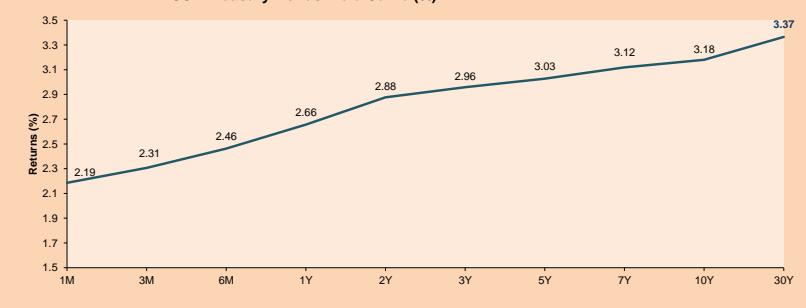
Base: 19/07/18=100

Source: Bloomberg

## ETFs

	Curr.	Close	1D	5D	30 D	YTD	Exchange
SPDR S&P 500 ETF TRUST	USD	276.40	-1.44%	1.55%	-4.99%	3.57%	NYSE Arca
ISHARES MSCI EMERGING MARKET	USD	39.30	-2.63%	0.41%	-6.38%	-16.60%	NYSE Arca
ISHARES IBOXX HIGH YLD CORP	USD	84.85	-0.42%	0.18%	-1.63%	-2.76%	NYSE Arca
FINANCIAL SELECT SECTOR SPDR	USD	26.57	-1.67%	0.64%	-5.95%	-4.80%	NYSE Arca
VANECK VECTORS GOLD MINERS E	USD	20.00	0.45%	0.65%	8.52%	-13.94%	NYSE Arca
ISHARES RUSSELL 2000 ETF	USD	155.00	-1.87%	0.33%	-8.97%	1.67%	NYSE Arca
SPDR GOLD SHARES	USD	115.92	0.11%	0.12%	2.19%	-6.25%	NYSE Arca
ISHARES 20+ YEAR TREASURY BO	USD	113.96	-0.04%	-0.79%	-2.86%	-10.17%	NASDAQ GM
INVESCO QQQ TRUST SERIES 1	USD	173.18	-2.32%	2.11%	-5.28%	11.18%	NASDAQ GM
ISHARES NASDAQ BIOTECHNOLOGY	USD	113.00	-1.47%	3.59%	-3.84%	5.83%	NASDAQ GM
ENERGY SELECT SECTOR SPDR	USD	72.17	-0.50%	-0.87%	-3.61%	-0.12%	NYSE Arca
PROSHARES ULTRA VIX ST FUTUR	USD	53.49	9.77%	-9.49%	34.40%	4.78%	NYSE Arca
UNITED STATES OIL FUND LP	USD	14.56	-1.75%	-2.61%	-0.88%	21.23%	NYSE Arca
ISHARES MSCI BRAZIL ETF	USD	38.59	-3.26%	2.88%	18.63%	-4.60%	NYSE Arca
SPDR S&P OIL & GAS EXP & PR	USD	40.49	-1.60%	-0.39%	-3.13%	8.90%	NYSE Arca
UTILITIES SELECT SECTOR SPDR	USD	53.73	0.15%	1.36%	-1.20%	1.99%	NYSE Arca
ISHARES US REAL ESTATE ETF	USD	77.14	-0.12%	1.90%	-6.19%	-4.78%	NYSE Arca
SPDR S&P BIOTECH ETF	USD	87.54	-1.97%	3.71%	-8.29%	3.15%	NYSE Arca
ISHARES IBOXX INVESTMENT GRA	USD	112.84	0.00%	-0.41%	-1.50%	-7.17%	NYSE Arca
ISHARES JPMORGAN USD EMERGI	USD	105.58	-0.38%	0.01%	-0.42%	-9.06%	NASDAQ GM
REAL ESTATE SELECT SECT SPDR	USD	31.50	0.03%	2.17%	-6.17%	-4.37%	NYSE Arca
ISHARES CHINA LARGE-CAP ETF	USD	38.64	-2.79%	-1.13%	-7.58%	-16.31%	NYSE Arca
CONSUMER STAPLES SPDR	USD	53.47	-0.13%	2.65%	-2.30%	-6.01%	NYSE Arca
VANECK VECTORS JUNIOR GOLD M	USD	29.31	-0.48%	-0.07%	6.74%	-14.12%	NYSE Arca
SPDR BBG BARC HIGH YIELD BND	USD	35.37	-0.45%	0.14%	-1.70%	-3.68%	NYSE Arca
VANGUARD REAL ESTATE ETF	USD	77.45	-0.19%	1.88%	-6.70%	-6.66%	NYSE Arca

USA Treasury Bonds Yield Curve (%)



Source: Bloomberg

Capital Market Laboratory Coordinator: Economist Bruno Bellido Anicama  
 Support: Lith Fernandez, Samuel Machacuay, Maria Pia Quijano, Jorge Retamozo  
 e-mail: pulsohorsatil@ulima.edu.pe  
 facebook: www.facebook.com/pulsohorsatil.ul  
 Phone number : 4376767 Annexes: 35340 - 35310

# PULSO BURSÁTIL

## LIMA

### Stocks

Ticker	Currency	Price	1D*	5D*	30D*	YTD*	Frequency	Volume (US\$)	Beta	Dividend Yield (%)	Price Earning	Market Cap. (M US\$)	Economic Sector*	Index Weight
▼ ALICORC1 PE**	S/.	9.95	-0.50%	-1.49%	-1.49%	-6.13%	100.00%	2,332,010	0.69	2.41	17.93	2,546.22	Industrial	3.53%
▼ ATACOCB1 PE**	S/.	0.38	-10.82%	-12.87%	-2.82%	-44.26%	100.00%	10,061	1.55	0.00	-	107.38	Mining	1.02%
- BACKUS11 PE**	S/.	22.00	0.00%	0.00%	1.15%	19.50%	73.68%	992,563	0.41	0.00	8.96	8,443.34	Industrial	0.82%
▼ BAP PE**	US\$	219.27	-1.74%	2.30%	1.23%	5.42%	100.00%	52,570	1.07	4.17	-	17,489.30	Diverse	5.82%
▲ BVN PE**	US\$	14.20	1.28%	1.43%	15.92%	0.57%	100.00%	81,877	1.69	0.41	-	3,907.85	Mining	5.88%
▲ CASAGRC1 PE**	S/.	3.93	-0.51%	0.77%	7.67%	-36.51%	100.00%	3,528	1.05	0.48	170.76	99.27	Agricultural	1.31%
- CONTINC1 PE**	S/.	3.98	0.00%	0.76%	-0.50%	5.43%	78.95%	2,011	0.42	0.00	15.12	6,407.48	Finance	2.85%
▼ CORARE1 PE**	S/.	0.63	-3.08%	-4.55%	-5.97%	-12.50%	100.00%	27,480	0.88	7.36	3.66	294.99	Industrial	1.72%
▼ CPACASC1 PE**	S/.	7.08	-2.61%	-3.93%	7.27%	-13.13%	100.00%	1,103,683	0.78	4.94	33.41	907.30	Industrial	2.38%
▼ CVERDEC1 PE**	US\$	21.50	-2.27%	-2.27%	0.00%	-27.61%	84.21%	359,666	1.17	2.66	19.35	7,526.20	Mining	5.25%
- ENGEPEC1 PE**	S/.	2.00	0.00%	0.00%	-6.54%	1.01%	63.16%	6,667	0.72	7.73	9.54	1,735.17	Public Services	1.44%
▼ ENDISPC1**	S/.	5.47	-0.55%	-0.55%	-3.36%	-3.01%	42.11%	169,975	0.76	3.91	10.27	1,047.45	Public Services	0.98%
▼ FERREYC1 PE**	S/.	2.18	-0.91%	-5.63%	-2.68%	-14.51%	100.00%	94,965	0.84	6.21	8.67	637.84	Diverse	4.90%
▲ GRAMONC1 PE**	S/.	1.95	7.14%	3.17%	12.07%	4.28%	100.00%	54,730	1.07	0.00	-	385.97	Diverse	4.05%
- IFS PE**	US\$	39.60	0.00%	-0.13%	1.41%	2.86%	78.95%	268,566	0.64	3.54	15.11	4,479.19	Diverse	7.22%
- INRETC1 PE**	US\$	25.70	0.00%	0.78%	1.58%	22.38%	89.47%	64,250	1.00	0.00	54.38	2,642.15	Diverse	5.28%
▼ LUSURC1 PE**	S/.	11.40	-1.81%	-4.60%	-0.87%	-5.39%	94.74%	1,469,803	0.47	6.05	12.10	1,664.69	Public Services	1.81%
- MINSUR11 PE**	S/.	1.38	0.00%	-3.50%	-1.43%	-23.33%	84.21%	6,815	1.38	0.00	0.15	1,193.07	Mining	3.09%
▼ PML PE**	US\$	0.20	-4.76%	-13.04%	22.70%	-37.50%	78.95%	2,120	1.79	0.00	-	52.77	Mining	2.12%
▼ RELAPAC1 PE**	S/.	0.14	-5.33%	-9.55%	-7.79%	-54.19%	100.00%	22,789	1.29	0.00	2.76	150.52	Industrial	2.12%
▼ SCCO PE**	US\$	40.30	-3.70%	-5.27%	-3.24%	-15.26%	73.68%	15,364	0.78	3.10	17.49	31,153.69	Mining	2.14%
▼ SIDERC1 PE**	S/.	0.50	-5.66%	-9.09%	0.00%	4.17%	89.47%	22,356	1.44	0.00	4.56	184.11	Industrial	1.43%
▼ TV PE**	US\$	0.51	-7.27%	-5.56%	-3.77%	-57.50%	94.74%	256,007	1.58	0.00	-	423.89	Mining	2.93%
- UNACEMC1 PE**	S/.	2.11	0.00%	-2.76%	-13.52%	-29.67%	78.95%	6,037	0.67	2.46	19.01	1,041.81	Industrial	3.00%
▼ VOLCABC1 PE**	S/.	0.63	-5.97%	-12.50%	-14.86%	-52.27%	100.00%	1,306,313	1.72	2.17	-	2,215.14	Mining	5.90%

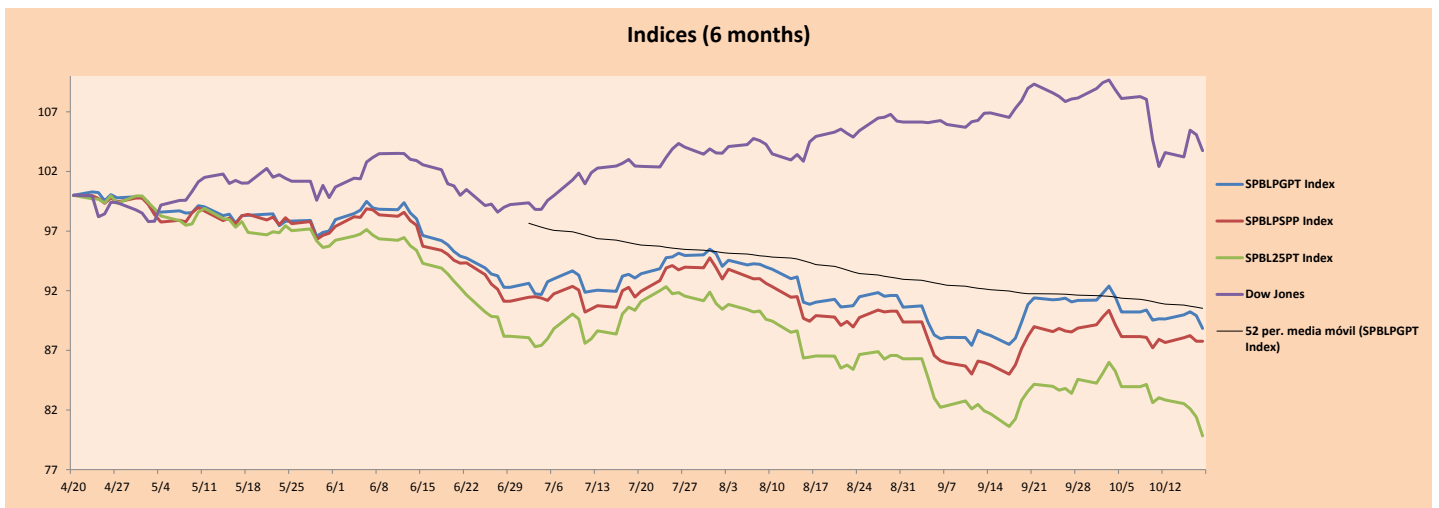
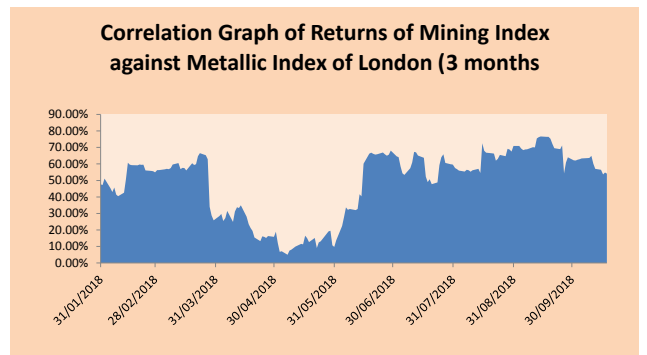
Quantity of shares: 25 Up 2

Source: Bloomberg, Económica Down 16  
\* Bloomberg Industry Classification System Hold 7  
\*\* PER is used in the stock market and original currency of the instrument  
\*Legend: Variation 1D: 1 Day; 5D: 5 Days, 1M: 1 Month; YTD: Var.% 12/31/17 to date

### Sectorial Indices

	Close	1D*	5D*	30D*	YTD*	Beta
▼ Mining Index	297.95	-1.94%	-2.96%	2.94%	-16.18%	1.71
▼ Consumer Index	976.15	-0.24%	-0.18%	0.54%	8.26%	0.41
▼ Industrial Index	207.84	-0.23%	-3.34%	-0.98%	-11.92%	0.72
▼ Banking and Financial Index	1,172.18	-1.46%	2.08%	1.79%	9.64%	1.01
▲ Construction Index	231.58	0.24%	-2.12%	-0.06%	-12.65%	0.66
▼ Services Index	410.69	-1.00%	-3.37%	-5.06%	-1.41%	0.16
▼ Juniors Index	31.78	-2.49%	-8.76%	10.73%	-27.49%	1.10
▼ Electric Index	400.94	-1.00%	-3.37%	-5.05%	-1.41%	0.16

\*Legend: Variation 1D: 1 Day; 5D: 5 Days, 1M: 1 Month; YTD: Var.% 12/31/17 to date



Source: Bloomberg

Capital Market Laboratory. Coordinator: Economist Bruno Bellido Anicama  
Support: Lith Fernandez, Samuel Machacuay, María Pia Quijano, Jorge Retamozo  
e-mail: pulsobursatil@ulima.edu.pe  
facebook: www.facebook.com/pulsobursatil.ul  
Phone number : 4376767 Annexes: 35340 - 35310

# PULSO BURSÁTIL

## SOVEREIGN RATING

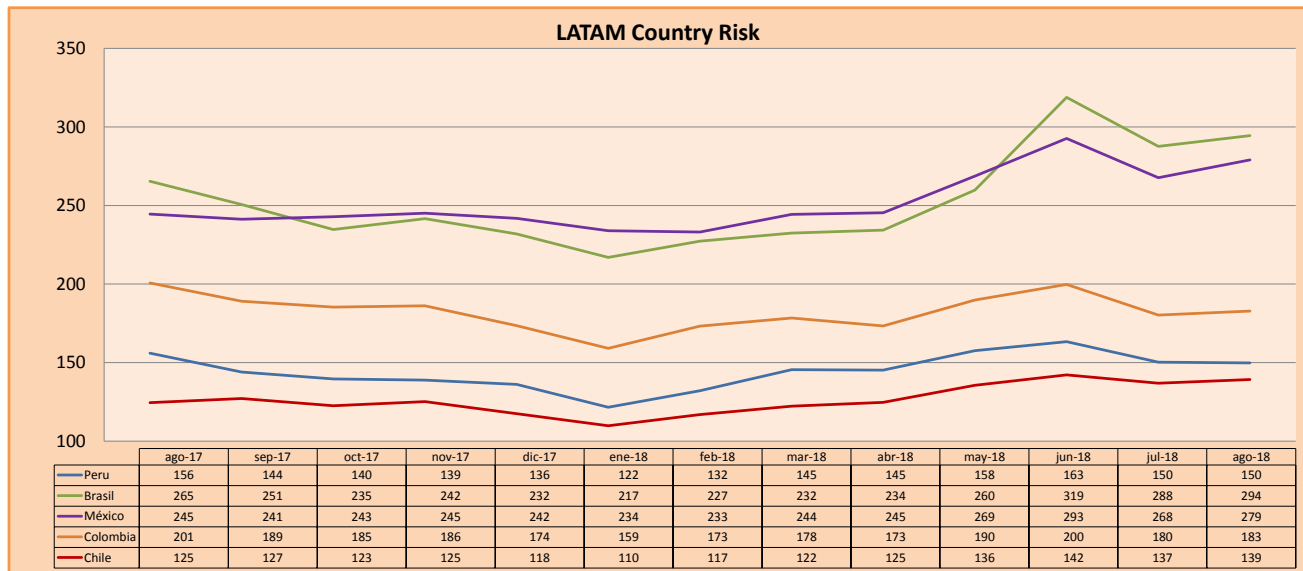
### RISK RATINGS

Moody's	S&P	Fitch	
Aaa	AAA	AAA	Prime
Aa1	AA+	AA+	High credit quality
Aa2	AA	AA	
Aa3	AA-	AA-	
A1	A+	A+	Medium-high grade, with low credit risk
A2	A	A	
A3	A-	A-	
Baa1	BBB+	BBB+	Moderate Credit Risk
Baa2	BBB	BBB	
Baa3	BBB-	BBB-	
Ba1	BB+	BB+	It has speculative elements and it is subject to substantial credit risk
Ba2	BB	BB	
Ba3	BB-	BB-	
B1	B+	B+	It is considered speculative and it has high credit risk
B2	B	B	
B3	B-	B-	
Caa1	CCC+	CCC	Bad credit conditions and it is subject to high credit risk
Caa2	CCC		
Caa3	CCC-		
Ca	CC	DDD	Very close to default or in default
	C		
C	D		

Source: Bloomberg

Latin America Credit Rating			
Clasificadora de riesgo			
Country	Moody's	Fitch	S&P
Peru	A3	BBB+	BBB+
Mexico	A3	BBB+	BBB+
Venezuela	C	C	SD
Brazil	Ba2	BB-	BB-
Colombia	Baa2	BBB	BBB-
Chile	A1	A	A+
Argentine	B2	B	B+ *-
Panama	Baa2	BBB	BBB

Source: Bloomberg



Source: Bloomberg

Capital Market Laboratory Coordinator: Economist Bruno Bellido Anicama  
Support: Lith Fernandez, Samuel Machacuay, Maria Pia Quijano, Jorge Retamozo  
e-mail: pulsobursatil@ulima.edu.pe  
facebook: www.facebook.com/pulsobursatil.ul  
Phone number : 4376767 Annexes: 35340 - 35310