

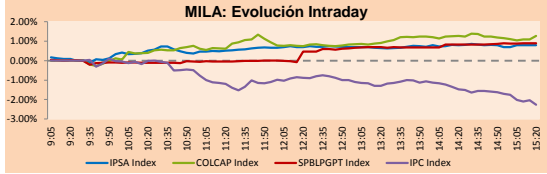
# PULSO BURSÁTIL

Lima, november 15, 2018

## MILA

| Main Indices         | Close     | 1 D    | 5 D    | 1 M     | YTD     | Market Cap. (US\$ bill) |
|----------------------|-----------|--------|--------|---------|---------|-------------------------|
| ▲ IPSA (Chile)       | 5,175.96  | 0.78%  | -0.99% | 0.81%   | -6.98%  | 164.20                  |
| ▲ IGPA (Chile)       | 26,270.17 | 0.64%  | -0.98% | 0.06%   | -6.11%  | 220.48                  |
| ▲ IGBC (Colombia)    | 12,326.61 | 1.35%  | -1.63% | -0.96%  | 7.39%   | 98.76                   |
| ▲ COLCAP (Colombia)  | 1,426.96  | 1.82%  | 0.26%  | -3.52%  | -5.73%  | 100.38                  |
| ▲ S&P/BVL (Perú)*    | 19,183.65 | 1.02%  | -0.49% | -0.91%  | -3.96%  | 100.94                  |
| ▲ S&P/BVL SEL (Perú) | 353.03    | 1.36%  | 0.07%  | -0.59%  | -4.07%  | 77.73                   |
| ▲ S&P/BVL LIMA 25    | 25,894.81 | 0.91%  | -1.96% | -2.51%  | -15.84% | 83.61                   |
| ▲ IPC (México)       | 41,450.65 | -2.11% | -6.20% | -13.99% | -16.01% | 253.78                  |
| ▲ S&P MILA 40        | 639.71    | 1.98%  | 0.85%  | -2.64%  | -12.26% | 275.30                  |

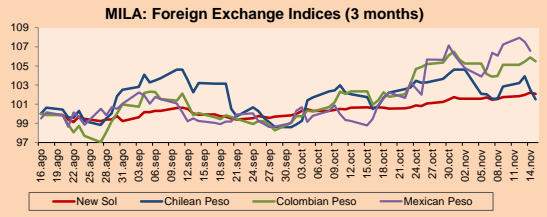
\* Market Cap. Of the last price Legend: Variation 1D: 1 day; 5D: 5 days; 1M: 1 Month; YTD: Var%12/31/17 to date



Source: Bloomberg

| Currency               | Price    | 1D*    | 5D*    | 30 D* | YTD*  |
|------------------------|----------|--------|--------|-------|-------|
| ▼ New Sol (PEN)        | 3,382.5  | -0.12% | 0.51%  | 1.46% | 4.47% |
| ▼ Chilean Peso (CLP)   | 675.96   | -1.00% | -0.06% | 0.99% | 9.83% |
| ▼ Colombian Peso (COP) | 3,190.48 | -0.36% | 1.47%  | 4.52% | 6.82% |
| ▼ Mexican Peso (MXN)   | 20.23    | -0.38% | 0.17%  | 7.88% | 2.91% |

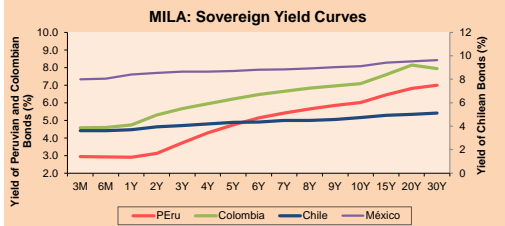
\* Legend: Variation 1D: 1 day; 5D: 5 days; 1M: 1 Month; YTD: Var%12/31/17 to date



Base: 16/08/18=100 Source: Bloomberg

## Fixed Income

| Instrument             | Currency | Price   | Bid Yield (%) | Ask Yield (%) | Duration |
|------------------------|----------|---------|---------------|---------------|----------|
| PERU 4.125 08/25/2027  | USD      | 100.977 | 4.02          | 3.97          | 7.26     |
| PERU 7.125 03/30/19    | USD      | 102.222 | 1.06          | 0.91          | 0.36     |
| PERU 7.375 07/21/25    | USD      | 120.614 | 3.85          | 3.79          | 5.32     |
| PERU 8.75 11/21/33     | USD      | 143.229 | 4.72          | 4.68          | 9.24     |
| PERU 6.55 03/14/37     | USD      | 122.155 | 4.74          | 4.71          | 10.98    |
| PERU 5.625 11/19/2050  | USD      | 112.085 | 4.89          | 4.86          | 15.78    |
| CHILE 2.25 10/30/22    | USD      | 95.402  | 3.55          | 3.46          | 3.73     |
| CHILE 3.875 08/05/20   | USD      | 101.269 | 3.19          | 3.03          | 1.63     |
| CHILE 3.625 10/30/2042 | USD      | 88.989  | 4.39          | 4.36          | 15.45    |
| COLOM 11.75 02/25/20   | USD      | 110.329 | 3.35          | 3.34          | 1.17     |
| COLOM 11.85 03/09/28   | USD      | 150.761 | 5.00          | 4.93          | 6.31     |
| COLOM 10.375 01/28/33  | USD      | 147.655 | 5.54          | 5.45          | 8.47     |
| COLOM 7.375 09/18/37   | USD      | 119.141 | 5.72          | 5.69          | 10.80    |
| COLOM 6.125 01/18/41   | USD      | 106.258 | 5.64          | 5.62          | 12.18    |
| MEX 4 10/02/23         | USD      | 98.04   | 4.48          | 4.42          | 4.35     |
| MEX5.55 01/45          | USD      | 97.334  | 5.761         | 5.734         | 13.35    |



Source: Bloomberg

## Equity

| Largest gains | Exchange | Amt. | Price    | ▲ %   |
|---------------|----------|------|----------|-------|
| MIRL          | Lima     | USD  | 0.04     | 14.29 |
| TV            | Lima     | USD  | 0.36     | 10.77 |
| CONTINC1      | Lima     | PEN  | 3.95     | 7.63  |
| BOCOLOMBIA    | Colomb.  | COP  | 33300.00 | 5.31  |

| Per Turnover | Exchange | Amount (US\$) |
|--------------|----------|---------------|
| SOM-B        | Santia.  | 10,683,608    |
| CENCOSUD     | Santia.  | 9,770,667     |
| ECOPETROL    | Colomb.  | 7,852,477     |
| FALABELLA    | Santia.  | 7,105,378     |
| PFBCOLOM     | Colomb.  | 6,086,075     |

| Largest losses | Exchange | Amt. | Price    | ▼ %   |
|----------------|----------|------|----------|-------|
| AMZN           | Lima     | USD  | 1981.20  | -7.98 |
| AIHC1          | Lima     | PEN  | 1.00     | -2.91 |
| EXITO          | Colomb.  | COP  | 14220.00 | -1.39 |
| CCU            | Santia.  | CLP  | 8476.50  | -1.20 |

| Per Volume | Exchange | Volume      |
|------------|----------|-------------|
| ESVAL-C    | Santia.  | 311,347,631 |
| BSANTANDER | Santia.  | 67,556,007  |
| CHILE      | Santia.  | 28,235,010  |
| COLBUN     | Santia.  | 16,478,844  |
| MASISA     | Santia.  | 15,177,357  |

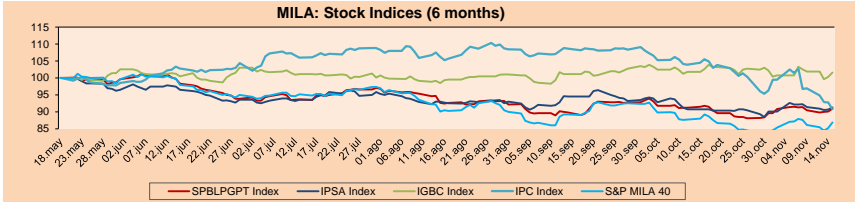
## MILA

**Peru:** The General Index of the BVL of Peru ended today's session with a positive result of +1.02%. The index maintains a cumulative annual negative trend of -3.96% in local currency, while the yield adjusted to foreign currency is -8.07%. Then, the S&P/BVL Peru SEL obtained a positive return of +1.44%, while the S&P/BVL LIMA 25 increased +0.91%. The spot PEN reached S/3.3810. Headline of the day: Economy must grow more than 5% in the last quarter to achieve the official expansion goal.

**Chile:** The IPSA index ended the day with a positive result of + 0.78%. The sectors of the index with the upward results were Materials (+1.57%) and Industrial (+1.46%). Continuing the trend, the values with the most positive results were Empresas CMPC SA (+2.42%) and Enel Americas SA (+2.02%). Headline of the day: For the fourth consecutive week all gasolines will go down.

**Colombia:** The COLCAP index had a positive return of +1.82%. The most favorable sectors of the index were Finance (+3.30%) and Materials (+1.61%). In the same way, the shares with the highest profits were the common stock of BanColombia SA (+5.31%) and its preferred share (+5.00%). Owner of the day: Ecopetrol wins four new blocks in the Gulf of Mexico.

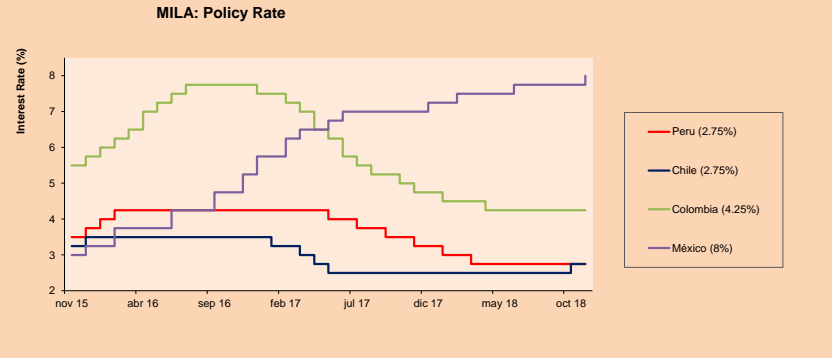
**Mexico:** Mexico's IPC index closed today's session with a negative result of -2.11%. The sectors of the index that generated the lowest results were Finance (-3.34%) and Public Services (-3.22%). Finally, the stocks with the highest losses were Genera SAB de CV (-5.97%) and GMexico Transportes SAB de CV (-5.14%). Headline of the day: Tense situation in Tijuana after several migrants from the caravan climbed the border wall.



Base: 21/05/18=100 Source: Bloomberg

## ETFs

|  | Curr. | Close | 1D     | 5D     | 30 D    | YTD     | Exchange  |
|--|-------|-------|--------|--------|---------|---------|-----------|
| ▲ iShares MSCI All Peru Capped Index Fund  | USD   | 35.64 | 2.21%  | -0.17% | -2.99%  | -12.21% | NYSE Arca |
| ▲ iShares MSCI Chile Capped                | USD   | 43.6  | 1.87%  | -0.82% | -0.25%  | -14.82% | Cboe BZX  |
| ▲ Global X MSCI Colombia                   | USD   | 12.66 | 1.85%  | -0.71% | -5.73%  | -11.63% | NYSE Arca |
| ▼ iShares MSCI Mexico Capped               | USD   | 40.24 | -1.18% | -5.56% | -19.18% | -17.31% | NYSE Arca |
| ▲ iShares MSCI Emerging Markets            | USD   | 40.82 | 2.23%  | 0.67%  | -0.10%  | -12.80% | NYSE Arca |
| ▲ Vanguard FTSE Emerging Markets           | USD   | 39.45 | 1.96%  | 0.84%  | 0.59%   | -12.35% | NYSE Arca |
| ▲ iShares Core MSCI Emerging Markets       | USD   | 49.21 | 2.12%  | 0.81%  | -0.20%  | -12.80% | NYSE Arca |
| ▲ iShares JP Morgan Emerging Markets Bonds | USD   | 56.62 | 1.47%  | 0.59%  | 0.55%   | -6.01%  | Cboe BZX  |
| ▼ Morgan Stanley Emerging Markets Domestic | USD   | 6.27  | -0.16% | -1.57% | -6.28%  | -13.26% | New York  |



Source: Bloomberg

Capital Market Laboratory Coodinator: Economist Bruno Bellido Anicama  
Support: Lith Fernandez, Samuel Machacuay, Maria Pia Quijano, Jorge Retamozo  
e-mail: pulsohorsatil@ulima.edu.pe  
facebook: www.facebook.com/pulsohorsatil.ul  
Phone number : 4376767 Annexes: 35340 - 35310



# PULSO BURSÁTIL

## WORLD

| Main Indices                  | Close     | 1 D*   | 5 D*   | 1 M*   | YTD*    | Market Cap. (US\$ Mill.) |
|-------------------------------|-----------|--------|--------|--------|---------|--------------------------|
| ▲ Dow Jones (USA)             | 25,289.27 | 0.83%  | -3.44% | -1.97% | 2.31%   | 6,959,122                |
| ▲ Standard & Poor's 500 (USA) | 2,730.20  | 1.06%  | -2.73% | -2.84% | 2.12%   | 23,619,390               |
| ▲ NASDAQ Composite (USA)      | 7,259.03  | 1.72%  | -3.61% | -5.05% | 5.15%   | 11,143,531               |
| ▼ Stoxx EUROPE 600 (Europe)   | 358.43    | -1.06% | -2.36% | -1.80% | -7.90%  | 8,565,287                |
| ▲ DAX (Germany)               | 11,363.67 | -0.52% | -1.51% | -3.59% | -12.11% | 960,479                  |
| ▲ FTSE 100 (United Kingdom)   | 7,038.01  | 0.68%  | -1.44% | -0.30% | -8.45%  | 1,515,114                |
| ▲ CAC 40 (France)             | 5,033.62  | -0.70% | -1.91% | -2.70% | -5.25%  | 1,326,301                |
| ▼ IBEX 35 (Spain)             | 9,073.50  | -0.36% | -1.13% | -0.01% | -9.66%  | 498,480                  |
| ▲ MSCI AC Asia Pacific Index  | 151.76    | 0.97%  | -0.33% | -0.45% | -12.68% | 16,398,224               |
| ▲ HANG SENG (Hong Kong)       | 26,103.34 | 1.75%  | -0.47% | 2.52%  | -12.75% | 2,437,354                |
| ▲ SHANGHAI SE Comp. (China)   | 2,668.17  | 1.38%  | 1.23%  | 4.78%  | -19.32% | 4,118,769                |
| ▲ NIKKEI 225 (Japan)          | 21,803.62 | -0.20% | -3.04% | -3.11% | -4.22%  | 3,244,900                |
| ▲ BOVESPA (Brazil)            | 85,973.06 | 1.25%  | -1.99% | 3.13%  | 12.53%  | 685,090                  |
| ▲ MERVAL (Argentina)          | 30,473.82 | 3.75%  | -0.85% | 3.54%  | 1.36%   | 95,312                   |

\*Legend: Variation 1D: 1 Day; 5D: 5 Days; 1M: 1 Month; YTD: Var. % 12/31/17 to date

## Equity

| Alemania (Acciones del DAX Index) |       |       |      | Largest gains |         |       |       | Largest losses |          |        |       |       |       |          |
|-----------------------------------|-------|-------|------|---------------|---------|-------|-------|----------------|----------|--------|-------|-------|-------|----------|
|                                   | Curr. | Price | ▲ %  | Exchange      |         | Curr. | Price | ▼ %            | Exchange |        | Curr. | Price | ▼ %   | Exchange |
| BAS GY                            | EUR   | 69.65 | 0.69 | Xetra         | 1COV GY | EUR   | 56.96 | -2.37          | Xetra    | DAI GY | EUR   | 51.06 | -2.35 | Xetra    |
| HEN3 GY                           | EUR   | 97.96 | 0.35 | Xetra         | CBK GY  | EUR   | 8.193 | -2.16          | Xetra    |        |       |       |       |          |
| EOAN GY                           | EUR   | 8.994 | 0.28 | Xetra         |         |       |       |                |          |        |       |       |       |          |
| SAP GY                            | EUR   | 92.15 | 0.23 | Xetra         |         |       |       |                |          |        |       |       |       |          |

| Europe (Stocks from STOXX EUROPE 600) |       |        |      | Largest gains |         |       |       | Largest losses |          |        |       |        |       |          |
|---------------------------------------|-------|--------|------|---------------|---------|-------|-------|----------------|----------|--------|-------|--------|-------|----------|
|                                       | Curr. | Price  | ▲ %  | Exchange      |         | Curr. | Price | ▼ %            | Exchange |        | Curr. | Price  | ▼ %   | Exchange |
| RRS LN                                | GBp   | 6300   | 4.83 | Londres       | RBS LN  | GBp   | 224.2 | -9.63          | Londres  | III LN | GBp   | 789.8  | -8.16 | Londres  |
| WGL LN                                | GBp   | 664    | 4.57 | Londres       | BIRK ID | EUR   | 5.965 | -7.88          | Dublin   | TW/ LN | GBp   | 149.95 | -7.50 | Londres  |
| ANTO LN                               | GBp   | 796    | 4.49 | Londres       |         |       |       |                |          |        |       |        |       |          |
| SUBC NO                               | NOK   | 102.25 | 4.42 | Oslo          |         |       |       |                |          |        |       |        |       |          |

## Global Overview:

### United States:

The US stock market closed the session with positive results among its main indices. In this way the SPX (+0.83%), the DJIA (+1.06%) and the Nasdaq (+1.72%) ended the session upwards. US stocks closed higher for the first time in six days, with the technology sector leading the rebound. Investors expect the trade dispute between the United States and China to ease before the G-20 meeting which will be this month. In economic news, retail sales in October increased 0.8%, surpassing the economists projected by Marketwatch. In corporate news, Wal-Mart reported quarterly sales higher than expected in the United States and raised its stock outlook for the entire year, since a better projection for the United States has boosted visits to face-to-face stores as well as e-commerce. However, the company's earnings are still under pressure. Its margins have been affected after absorbing higher transport costs and greater investment in its online business line. Meanwhile, oil prices in the United States ended up, but off the highest level of the day as domestic supplies increase.

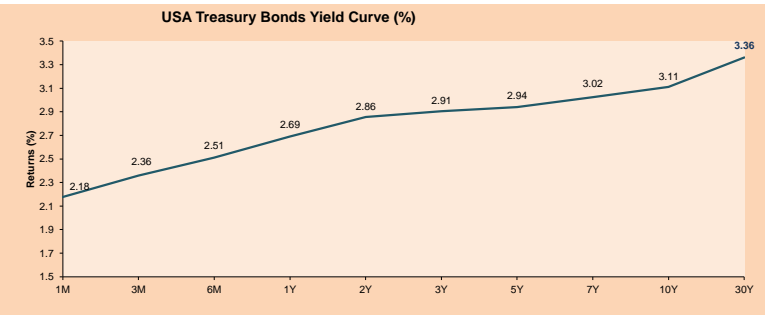
### Europe:

The European market closed the day with negative returns among its main indices, with the exception of the FTSE 100 (+0.06%), as the pound collapsed after the resignations in the British government for the Brexit proposal. Therefore, a weaker pound would benefit the big index companies because they get their income from abroad, which the currency had its biggest one-day decline since June 2017. The Stoxx 600 retreated -1.06%, raising its losses weekly to 2%. While the CAC 40, like the DAX, finished at -0.70% and 0.52%, respectively. The FTSE MIB fell 0.90%, highlighting that the yields on Italian government bonds exceeded maximums (3.54%) after economic spokesman Claudio Borghi denied comments that Italy would leave the European Union if its party won the next elections. Among the main news, Dominic Raab and other ministers resigned from the cabinet of Prime Minister Theresa May, which raised doubts about an orderly departure from the European Union, in addition, this news hurt the banking sector, worried about the possibility of a Brexit hard.

### Asia:

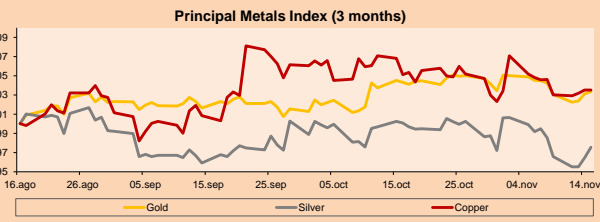
The Asian stock market finished the day with mixed results among its main indices. The Japanese shares had a session in red; the banking sector was especially affected after presenting disappointing earnings projections and by the fall of financial stocks in the US. In China, the indices showed an upward session driven by the hope that a new round of conversions between the US and China will take place, after Beijing responded in writing to Washington's trade demands. The Nikkei 225 index ended the session at 21803.62 points, which represents a daily variation from the previous close of -0.20%. The sectors, define by the Global Industrial Classification Standard (GICS), which led the losses were Energy (-1.60%) and Financials (-1.28%) while the SoftBank Group (-2.70%) generated a loss of 27.36 points on the index, the largest among the companies that make it up. The Hang Seng (+1.75%) achieved its best daily result in almost two weeks, driven by the shares of Tencent (+5.80), after reporting strong gains. In the mainland market, the CSI 300, composed of Blue Chip shares, rose 1.17%, of the stocks that make up the index, 271 closed higher and 19 lower.

| ETFs                           | Curr. | Close  | 1D     | 5D     | 30 D    | YTD     | Exchange  |
|--------------------------------|-------|--------|--------|--------|---------|---------|-----------|
| SPDR S&P 500 ETF TRUST         | USD   | 273.02 | 1.04%  | -2.67% | -2.63%  | 3.65%   | NYSE Arca |
| ISHARES MSCI EMERGING MARKET   | USD   | 40.82  | 2.23%  | 0.67%  | -0.10%  | -12.80% | NYSE Arca |
| ISHARES IBOWX HIGH YLD CORP    | USD   | 83.52  | -0.02% | -1.56% | -1.69%  | -0.03%  | NYSE Arca |
| FINANCIAL SELECT SECTOR SPDR   | USD   | 26.76  | 1.48%  | -2.23% | 0.04%   | -2.93%  | NYSE Arca |
| VANECK VECTORS GOLD MINERS E   | USD   | 19.09  | 1.38%  | -1.50% | -4.50%  | -17.86% | NYSE Arca |
| ISHARES RUSSELL 2000 ETF       | USD   | 151.98 | 1.43%  | -3.45% | -4.45%  | 0.28%   | NYSE Arca |
| SPDR GOLD SHARES               | USD   | 114.77 | 0.11%  | -0.87% | -0.89%  | -7.18%  | NYSE Arca |
| ISHARES 20+ YEAR TREASURY BO   | USD   | 114.04 | -0.04% | 1.36%  | -0.32%  | -8.09%  | NASDAQ GM |
| INVESTCO QQQ TRUST SERIES 1    | USD   | 168.09 | 1.75%  | -3.65% | -5.15%  | 8.52%   | NASDAQ GM |
| ISHARES NASDAQ BIOTECHNOLOGY   | USD   | 104.15 | 2.19%  | -5.46% | -9.24%  | -2.29%  | NASDAQ GM |
| ENERGY SELECT SECTOR SPDR      | USD   | 66.39  | 1.47%  | -3.25% | -8.04%  | -6.20%  | NYSE Arca |
| PROSHARES ULTRA VIX ST FUTUR   | USD   | 58.14  | -1.47% | 21.38% | 21.45%  | 13.89%  | NYSE Arca |
| UNITED STATES OIL FUND LP      | USD   | 11.98  | 0.25%  | -6.70% | -21.13% | -0.25%  | NYSE Arca |
| ISHARES MSCI BRAZIL ETF        | USD   | 39.87  | 2.44%  | 1.68%  | 1.06%   | 0.20%   | NYSE Arca |
| SPDR S&P OIL & GAS EXP & PR    | USD   | 34.79  | 1.49%  | -4.45% | -16.93% | -5.95%  | NYSE Arca |
| UTILITIES SELECT SECTOR SPDR   | USD   | 54.05  | -0.83% | -1.35% | 0.56%   | 5.26%   | NYSE Arca |
| ISHARES US REAL ESTATE ETF     | USD   | 79.69  | -0.82% | -0.89% | 2.69%   | 1.14%   | NYSE Arca |
| SPDR S&P BIOTECH               | USD   | 77.55  | 3.50%  | -7.91% | -13.30% | -8.44%  | NYSE Arca |
| ISHARES IBOWX INVESTMENT GRA   | USD   | 111.51 | -0.19% | -0.53% | -1.34%  | -5.50%  | NYSE Arca |
| ISHARES J.P. MORGAN USD EMERGI | USD   | 103.87 | -0.41% | -0.66% | -1.79%  | -7.08%  | NASDAQ GM |
| REAL ESTATE SELECT SECT SPDR   | USD   | 32.99  | -0.78% | -0.27% | 4.46%   | 2.67%   | NYSE Arca |
| ISHARES CHINA LARGE-CAP ETF    | USD   | 41.28  | 1.85%  | 0.68%  | 2.58%   | -9.41%  | NYSE Arca |
| CONSUMER STAPLES SPDR          | USD   | 55.92  | -0.16% | -1.01% | 4.94%   | 0.32%   | NYSE Arca |
| VANECK VECTORS JUNIOR GOLD M   | USD   | 27.12  | 1.80%  | -1.53% | -8.81%  | -20.54% | NYSE Arca |
| SPDR BBG BARC HIGH YIELD BND   | USD   | 34.77  | -0.06% | -1.67% | -1.78%  | -0.86%  | NYSE Arca |
| VANGUARD REAL ESTATE ETF       | USD   | 79.93  | -0.68% | -0.84% | 2.61%   | -0.46%  | NYSE Arca |



Source: Bloomberg

Capital Market Laboratory Coordinator: Economist Bruno Bellido Anicama  
Support: Lih Fernandez, Samuel Machacay, Maria Pia Quijano, Jorge Retamozo  
e-mail: pulsobursatil@ulima.edu.pe  
facebook: www.facebook.com/pulsobursatil.ul  
Phone number : 4376767 Annexes: 35340 - 35310



Base: 16/08/18=100  
Source: Bloomberg



# PULSO BURSÁTIL

## LIMA

### Stocks

| Ticker             | Currency | Price  | 1D*    | 5D*      | 30D*     | YTD*     | Frequency | Volume (US\$) | Beta | Dividend Yield (%) | Price Earning | Market Cap. (M US\$) | Economic Sector* | Index Weight |
|--------------------|----------|--------|--------|----------|----------|----------|-----------|---------------|------|--------------------|---------------|----------------------|------------------|--------------|
| - ALICORC1 PE**    | S/.      | 9.81   | 0.00%  | -1.90%   | -2.39%   | -5.52%   | 100.00%   | 89,148        | 0.62 | 2.45               | 17.06         | 2,475.17             | Industrial       | 3.53%        |
| - ATACOB1 PE**     | S/.      | 0.36   | 0.00%  | -10.00%  | -16.28%  | -47.06%  | 100.00%   | 16,873        | 1.50 | 0.00               | -             | 100.56               | Mining           | 1.02%        |
| - BACKUS1 PE**     | S/.      | 22.00  | 0.00%  | 6.54%    | 1.45%    | 26.60%   | 73.68%    | 22,485        | 0.44 | 5.37               | 8.96          | 8,645.87             | Industrial       | 0.82%        |
| ▲ BAP PE**         | US\$     | 224.60 | 1.86%  | -0.97%   | 0.27%    | 10.04%   | 100.00%   | 41,734        | 1.09 | 1.92               | -             | 17,914.43            | Diverse          | 5.82%        |
| ▲ BVN PE**         | US\$     | 14.34  | 2.58%  | 2.50%    | 1.77%    | 2.18%    | 89.47%    | 26,215        | 1.54 | 0.60               | -             | 3,649.04             | Mining           | 5.88%        |
| ▲ CASAGRC1 PE**    | S/.      | 3.95   | 1.28%  | 1.28%    | -1.25%   | -35.90%  | 100.00%   | 2,800         | 0.91 | 0.48               | 171.63        | 98.37                | Agricultural     | 1.31%        |
| ▲ CONTINC1 PE**    | S/.      | 3.95   | 7.63%  | 2.60%    | -0.75%   | 8.40%    | 100.00%   | 70,632        | 0.42 | 3.60               | 15.30         | 6,269.32             | Finance          | 2.85%        |
| ▲ CORARE11 PE**    | S/.      | 0.68   | 1.49%  | 3.03%    | 3.03%    | -1.59%   | 100.00%   | 13,827        | 1.01 | 6.82               | 4.14          | 299.36               | Industrial       | 1.72%        |
| - CPACASC1 PE**    | S/.      | 6.50   | 0.00%  | -3.85%   | -5.62%   | -15.80%  | 100.00%   | 3,970         | 0.88 | 5.80               | 30.67         | 820.79               | Industrial       | 2.38%        |
| - CVERDEC1 PE**    | US\$     | 21.50  | 0.00%  | 0.00%    | -3.59%   | -26.16%  | 84.21%    | 23,236        | 1.10 | 2.66               | 19.35         | 7,526.20             | Mining           | 5.25%        |
| ▼ ENGEPEC1 PE**    | S/.      | 1.95   | -1.02% | -1.02%   | 0.88%    | 10.48%   | 15.79%    | 33,666        | 0.74 | 8.94               | 8.87          | 1,667.88             | Public Services  | 1.44%        |
| - ENDISPC1**       | S/.      | 5.35   | 0.00%  | -0.74%   | -1.89%   | -1.49%   | 68.42%    | 31,633        | 0.77 | 0.00               | 10.04         | 1,010.00             | Public Services  | 0.98%        |
| - FERREYC1 PE**    | S/.      | 2.29   | 0.00%  | -4.58%   | 2.69%    | -5.41%   | 100.00%   | 23,290        | 1.02 | 5.92               | 9.90          | 660.55               | Diverse          | 4.90%        |
| - GRAMONC1 PE**    | S/.      | 2.05   | 0.00%  | -5.09%   | 12.02%   | 9.63%    | 89.47%    | 16,059        | 0.81 | 0.00               | -             | 400.03               | Diverse          | 4.05%        |
| ▲ IFS PE**         | US\$     | 38.65  | 0.76%  | 3.48%    | -2.40%   | 3.73%    | 94.74%    | 16,310        | 0.55 | 3.62               | 13.29         | 4,371.74             | Diverse          | 7.22%        |
| - INRETC1 PE**     | US\$     | 27.00  | 0.00%  | 3.25%    | 5.06%    | 28.57%   | 100.00%   | 1,569,604     | 1.00 | 0.00               | 57.95         | 2,775.80             | Diverse          | 5.28%        |
| ▲ LUSURC1 PE**     | S/.      | 10.50  | 0.96%  | -2.78%   | -9.56%   | -9.00%   | 94.74%    | 19,625        | 0.48 | 6.57               | 11.15         | 1,511.60             | Public Services  | 1.81%        |
| ##### MILPOC1 PE** | S/.      | #N/A   | N/A    | #¡VALOR! | #¡VALOR! | #¡VALOR! | 0.00%     | #¡VALOR!      | #N/A | N/A                | ield Not Ap   | #¡VALOR!             | Mining           | 1.56%        |
| ▲ MINSUR1 PE**     | S/.      | 1.40   | 2.94%  | 2.19%    | 2.19%    | -22.22%  | 84.21%    | 11,734        | 1.39 | 4.92               | 0.78          | 1,193.26             | Mining           | 3.09%        |
| ▲ PML PE**         | US\$     | 0.17   | 1.22%  | -7.78%   | -24.20%  | -48.13%  | 89.47%    | 39,303        | 1.66 | 0.00               | -             | 43.80                | Mining           | 2.12%        |
| - RELAPAC1 PE**    | S/.      | 0.12   | 0.00%  | -8.27%   | -20.78%  | -60.65%  | 94.74%    | 32,767        | 1.15 | 0.00               | 396.35        | 127.50               | Industrial       | 2.12%        |
| - SCCO PE**        | US\$     | 36.78  | 0.00%  | -6.15%   | -10.89%  | -20.24%  | 84.21%    | 27,350        | 0.00 | 0.00               | 16.24         | 28,432.58            | Mining           | 2.14%        |
| ▲ SIDERC1 PE**     | S/.      | 0.57   | 1.79%  | 1.79%    | 3.64%    | 18.75%   | 89.47%    | 8,987         | 1.51 | 0.00               | 6.20          | 206.92               | Industrial       | 1.43%        |
| ▲ TV PE**          | US\$     | 0.36   | 10.77% | -2.70%   | -34.55%  | -70.00%  | 100.00%   | 178,128       | 1.68 | 0.00               | -             | 299.23               | Mining           | 2.93%        |
| ▼ UNACEMC1 PE**    | S/.      | 2.10   | -1.27% | 0.14%    | -4.42%   | -28.62%  | 89.47%    | 15,846        | 0.57 | 2.48               | 18.92         | 1,022.22             | Industrial       | 3.00%        |
| - VOLCABC1 PE**    | S/.      | 0.72   | 0.00%  | -6.49%   | 5.88%    | -44.49%  | 100.00%   | 52,653        | 1.78 | 1.90               | -             | 2,248.84             | Mining           | 5.90%        |

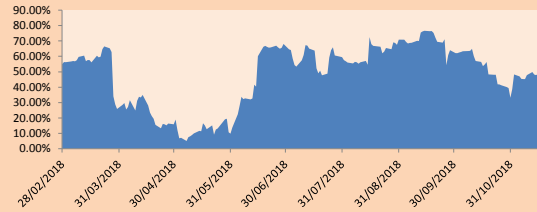
Quantity of shares: 25  
 Source: Bloomberg, Económica  
 \* Bloomberg Industry Classification System  
 \*\* PER is used in the stock market and original currency of the instrument  
 \*Legend: Variation 1D: 1 Day; 5D: 5 Days; 1M: 1 Month; YTD: Var.% 12/31/17 to date

### Sectorial Indices

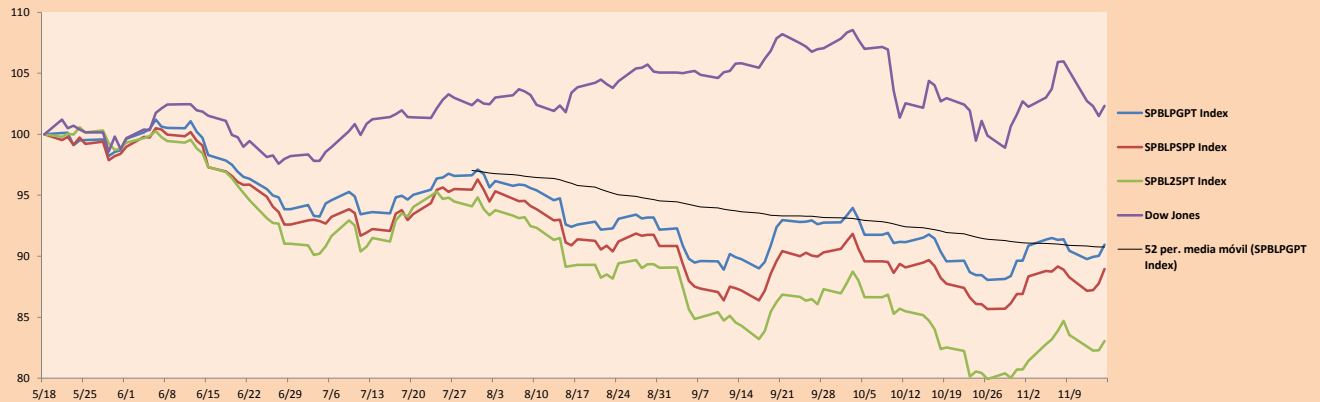
|                               | Close    | 1D*    | 5D*    | 30D*    | YTD*    | Beta |
|-------------------------------|----------|--------|--------|---------|---------|------|
| ▲ Mining Index                | 292.65   | 1.22%  | -1.64% | -4.02%  | -17.67% | 1.80 |
| ▼ Consumer Index              | 990.71   | -0.04% | 1.34%  | 1.21%   | 9.88%   | 0.30 |
| ▼ Industrial Index            | 211.78   | -0.22% | -3.25% | 0.22%   | -10.25% | 0.74 |
| ▲ Banking and Financial Index | 1,208.05 | 1.66%  | -0.13% | 1.26%   | 12.99%  | 1.00 |
| ▼ Construction Index          | 233.28   | -0.28% | -2.42% | -0.51%  | -12.01% | 0.61 |
| ▼ Services Index              | 396.43   | -0.01% | -1.10% | -4.41%  | -4.84%  | 0.11 |
| ▲ Juniors Index               | 28.45    | 0.42%  | -4.50% | -16.30% | -35.09% | 1.04 |
| ▼ Electric Index              | 387.02   | -0.01% | -1.10% | -4.41%  | -4.83%  | 0.11 |

\*Legend: Variation 1D: 1 Day; 5D: 5 Days; 1M: 1 Month; YTD: Var.% 12/31/17 to date

Correlation Graph of Returns of Mining Index against Metallic Index of London (3 months)



Indices (6 months)



Source: Bloomberg

Capital Market Laboratory Coordinator: Economist Bruno Bellido Anicama  
 Support: Lith Fernandez, Samuel Machacuy, Maria Pia Quijano, Jorge Retamozo  
 e-mail: pulsobursatil@ulima.edu.pe  
 facebook: www.facebook.com/pulsobursatil.ul  
 Phone number : 4376767 Annexes: 35340 - 35310

The content of this document is just for informational purposes. The information and opinions expressed should not be considered as recommendations for future decisions. Under any circumstances, the Capital Market Laboratory of University of Lima will be responsible for the use of the statements in this document.



# PULSO BURSÁTIL

## SOVEREIGN RATING

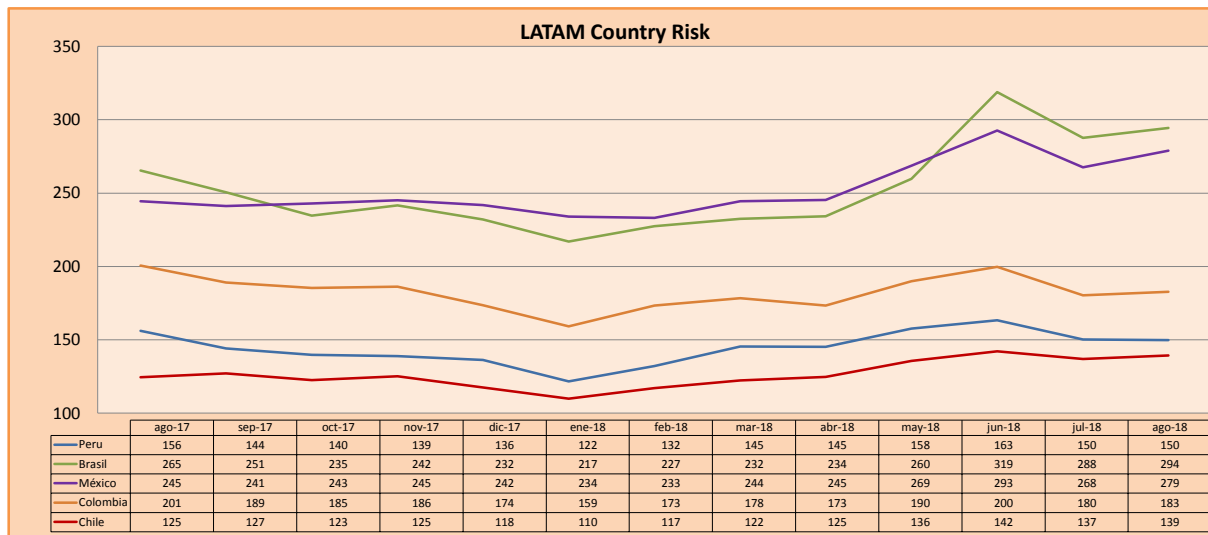
### RISK RATINGS

| Moody's | S&P  | Fitch   |  |
|---------|------|---------|--|
| Aaa     | AAA  | AAA     | Prime  |
| Aa1     | AA+  | AA+     | High credit quality  |
| Aa2     | AA   | AA      |  |
| Aa3     | AA-  | AA-     |  |
| A1      | A+   | A+      | Medium-high grade, with low credit risk                                  |
| A2      | A    | A       |  |
| A3      | A-   | A-      |  |
| Baa1    | BBB+ | BBB+    | Moderate Credit Risk   |
| Baa2    | BBB  | BBB     |  |
| Baa3    | BBB- | BBB-    |  |
| Ba1     | BB+  | BB+     | It has speculative elements and it is subject to substantial credit risk |
| Ba2     | BB   | BB      |  |
| Ba3     | BB-  | BB-     |  |
| B1      | B+   | B+      | It is considered speculative and it has high credit risk                 |
| B2      | B    | B       |  |
| B3      | B-   | B-      |  |
| Caa1    | CCC+ |         | Bad credit conditions and it is subject to high credit risk              |
| Caa2    | CCC  |         |  |
| Caa3    | CCC- | CCC     |  |
| Ca      | C    |         | Very close to default or in default                                      |
|         |      | DDD     |  |
| C       | D    | DD<br>D |  |

Source: Bloomberg

| Latin America Credit Rating |         |       |      |
|-----------------------------|---------|-------|------|
| Clasificadora de riesgo     |         |       |      |
| Country                     | Moody's | Fitch | S&P  |
| Peru                        | A3      | BBB+  | BBB+ |
| Mexico                      | A3      | BBB+  | BBB+ |
| Venezuela                   | C       | C     | SD   |
| Brazil                      | Ba2     | BB-   | BB-  |
| Colombia                    | Baa2    | BBB   | BBB- |
| Chile                       | A1      | A     | A+   |
| Argentina                   | B2      | B     | B    |
| Panama                      | Baa2    | BBB   | BBB  |

Source: Bloomberg



Source: Bloomberg

Capital Market Laboratory Coordinator: Economist Bruno Bellido Anicama  
 Support: Lith Fernandez, Samuel Machacuay, Maria Pia Quijano, Jorge Retamozo  
 e-mail: pulsobursatil@ulima.edu.pe  
 facebook: www.facebook.com/pulsobursatil.ul  
 Phone number : 4376767 Annexes: 35340 - 35310

The content of this document is just for informational purposes. The information and opinions expressed should not be considered as recommendations for future decisions. Under any circumstances, the Capital Market Laboratory of University of Lima will be responsible for the use of the statements in this document.