



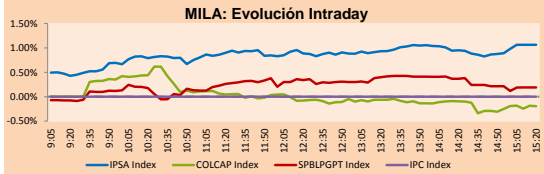
PULSO BURSÁTIL

Lima, december 12, 2018

MILA

Main Indices	Close	1 D	5 D	1 M	YTD	Market Cap. (US\$ bill)
▲ IPSA (Chile)	5,118.56	0.92%	-0.45%	-0.67%	-8.02%	160.71
▲ IGPA (Chile)	25,974.82	0.80%	-0.50%	-0.77%	-7.17%	216.16
▲ IGBC (Colombia)	11,686.00	0.27%	-3.08%	-5.42%	1.81%	94.71
▲ COLCAP (Colombia)	1,374.29	0.07%	-2.42%	-3.21%	-9.21%	96.03
▲ S&P/BVL (Perú)*	19,245.75	0.00%	-1.45%	1.64%	-3.65%	100.04
▲ S&P/BVL SEL (Perú)	356.04	0.20%	-1.54%	2.55%	-3.61%	75.85
▲ S&P/BVL LIMA 25	26,519.14	0.88%	-1.51%	2.97%	-13.81%	81.80
▲ IPC (México)	40,897.85	-1.11%	-2.31%	-5.57%	-17.13%	250.19
▲ S&P MILA 40	618.96	0.08%	-2.68%	-1.66%	-15.10%	265.79

* Market Cap. Of the last price *Legend: Variation 1D: 1 day; 5D: 5 days; 1M: 1 Month; YTD: Var%12/31/17 to date

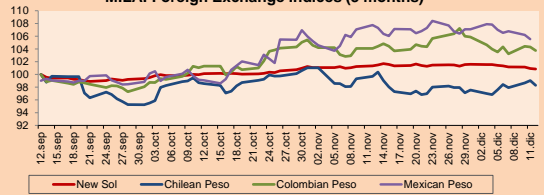


Source: Bloomberg

Currency	Price	1D*	5D*	30 D*	YTD*
▼ New Sol (PEN)	3,358.3	-0.08%	-0.57%	-0.48%	3.72%
▼ Chilean Peso (CLP)	677.75	-0.74%	0.73%	-1.39%	10.12%
▼ Colombian Peso (COP)	3,169.80	-0.52%	0.23%	-0.30%	6.13%
▼ Mexican Peso (MXN)	20.07	-0.63%	-2.11%	-1.41%	2.10%

*Legend: Variation 1D: 1 day; 5D: 5 days; 1M: 1 Month; YTD: Var%12/31/17 to date

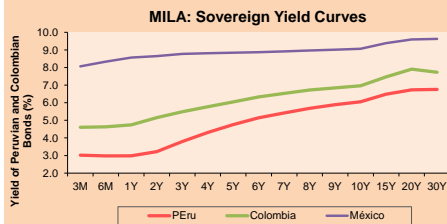
MILA: Foreign Exchange Indices (3 months)



Base: 12/09/18=100
Source: Bloomberg

Fixed Income

Instrument	Currency	Price	Bid Yield (%)	Ask Yield (%)	Duration
PERU 4.125 08/25/2027	USD	102.914	3.76	3.70	7.21
PERU 7.125 03/30/19	USD	102.243	-0.37	-0.58	0.29
PERU 7.35 07/21/25	USD	121.408	3.70	3.64	5.26
PERU 8.75 11/21/33	USD	146.4	4.48	4.44	9.52
PERU 6.55 03/14/37	USD	125.341	4.51	4.48	11.00
PERU 5.625 11/19/2050	USD	116.295	4.65	4.63	15.99
CHILE 2.25 10/30/22	USD	96.264	3.33	3.23	3.66
CHILE 3.875 08/05/20	USD	101.264	3.17	2.99	1.57
CHILE 3.625 10/30/2042	USD	90.846	4.25	4.23	15.48
COLOM 11.75 02/25/20	USD	109.845	3.41	3.16	1.11
COLOM 11.85 03/09/28	USD	153.872	4.66	4.58	6.28
COLOM 10.375 01/28/33	USD	149.684	5.36	5.29	8.47
COLOM 7.375 09/18/37	USD	122.653	5.45	5.42	10.85
COLOM 6.125 01/18/41	USD	109.943	5.37	5.34	12.28
MEX 4 10/02/23	USD	99.232	4.21	4.15	4.29
MEX5.55 01/45	USD	101.025	5.485	5.466	13.53



Source: Bloomberg

Equity	Exchange	Amt.	Price	▲ %
Largest gains				
VOLCABC1	Lima	PEN	0.76	4.11
SOCOVELA	Santia.	CLP	380.00	3.80
AUSTRALIS	Santia.	CLP	78.64	3.00
ETB	Colomb.	COP	279.00	2.95
Per Turnover	Exchange	Amount (US\$)		
SOM-B	Santia.	20,971,996		
FALABELLA	Santia.	19,648,971		
ECOPETROL	Colomb.	13,020,336		
COPEL	Santia.	12,616,785		
CHILE	Santia.	10,512,140		

Largest losses	Exchange	Amt.	Price	▼ %
SIDERC1	Lima	PEN	0.55	-3.51
PASUR	Santia.	CLP	6810.00	-2.85
EXITO	Colomb.	COP	12100.00	-2.42
INVERMAR	Santia.	CLP	116.00	-2.32
Per Volume	Exchange	Volume		
CHILE	Santia.	72,966,211		
BSANTANDER	Santia.	68,834,332		
ORO BLANCO	Santia.	21,418,921		
VAPORES	Santia.	18,076,532		
ECOPETROL	Colomb.	13,562,497		

MILA

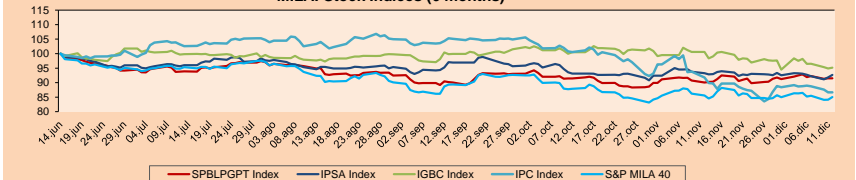
Peru: The General Index of the BVL of Peru ended today's session with a neutral result. The index maintains an accumulated annual negative trend of -3.65% in local currency, while the adjusted loss in dollars amounts to -7.11%. Then, the S&P/BVL Peru SEL obtained a positive return of +0.36%, while the S&P/BVL LIMA 25 increased by +0.87%. The spot PEN reached S/3,358.3. Today's headline: Non-traditional exports grow 15% between January and October 2018.

Chile: The IPSA index ended the day with a positive return of +0.92%. The sectors of the index with the most positive results were Information Technology (+1.96%) and Non-Basic Consumption Products (+1.66%). In the same way, the securities with the highest results were Ripley Corporación SA (+2.62%) and CAP SA (+1.98%). Today's headline: The first radiography on foreign investment in Chile is already underway.

Colombia: The COLCAP index closed the session with positive results of +0.07%. The sectors with the highest upward performance were Non-Basic Consumption Services (+2.95%) and Energy (+1.14%). In addition, the shares with the highest yields were Empresa de Telecomunicaciones de Bogotá SA (+2.95%) and Grupo de Inversiones Suramericana (+1.72%). Today's headline: In Colombia, 90.3% of households have some type of insurance.

Mexico: The Mexican stock market remained closed during the day. Today's headline: Repurchase of bonds will not affect the budget: SHCP.

MILA: Stock Indices (6 months)

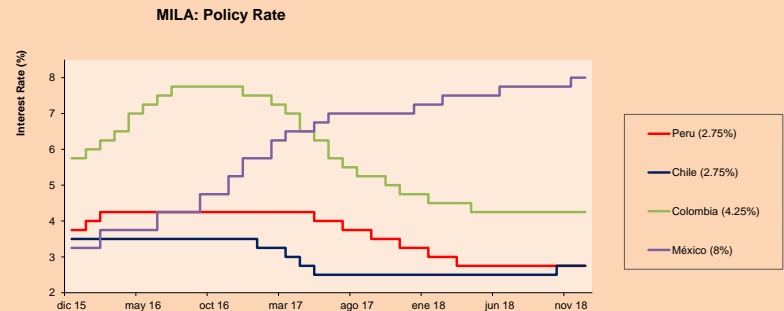


Base: 15/06/18=100
Source: Bloomberg

ETFs

	Curr.	Close	1D	5D	30 D	YTD	Exchange
▲ iShares MSCI All Peru Capped Index Fund	USD	35.65	0.59%	-0.59%	2.65%	-13.01%	NYSE Arca
▲ iShares MSCI Chile Capped	USD	42.93	2.07%	-0.99%	1.39%	-17.70%	Cboe BZX
▲ Global X MSCI Colombia	USD	12.02	0.10%	-3.92%	-3.99%	-16.74%	NYSE Arca
▲ iShares MSCI Mexico Capped	USD	40.68	1.50%	1.98%	-1.98%	-17.47%	NYSE Arca
▲ iShares MSCI Emerging Markets	USD	40.41	1.63%	-1.49%	2.98%	-14.24%	NYSE Arca
▲ Vanguard FTSE Emerging Markets	USD	39.14	1.50%	-1.49%	3.16%	-14.75%	NYSE Arca
▲ iShares Core MSCI Emerging Markets	USD	48.77	1.58%	-1.59%	2.98%	-14.29%	NYSE Arca
▲ iShares JP Morgan Emerging Markets Bonds	USD	57.085	0.93%	-0.46%	3.87%	-6.05%	Cboe BZX
▲ Morgan Stanley Emerging Markets Domestic	USD	6.34	0.16%	-1.86%	0.16%	-17.66%	New York

MILA: Policy Rate



Source: Bloomberg

Capital Market Laboratory Coordinator: Economist Bruno Bellido Anicam
Support: Lith Fernandez, Samuel Machacua, Maria Pia Quijano, Jorge Retamozo
e-mail: pulsobursatil@ulima.edu.pe
facebook: www.facebook.com/pulsobursatil.ul
Phone number : 4376767 Annexes: 35340 - 35310

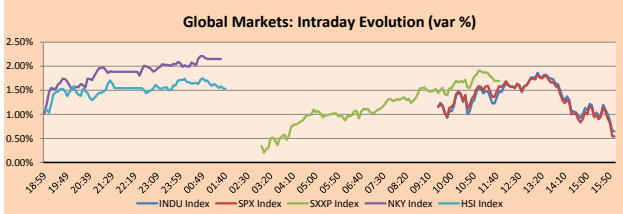


PULSO BURSÁTIL

WORLD

Main Indices	Close	1 D*	5 D*	1 M*	YTD*	Market Cap. (US\$ Mill.)
▲ Dow Jones (USA)	24,527.27	0.64%	-2.00%	-3.39%	-0.78%	6,819,406
▲ Standard & Poor's 500 (USA)	2,651.07	0.54%	-1.81%	-2.76%	-0.84%	23,010,892
▲ NASDAQ Composite (USA)	7,098.31	0.95%	-0.84%	-1.42%	2.82%	10,987,857
▲ Stoxx EUROPE 600 (Europe)	350.00	1.69%	-1.21%	-3.32%	-10.07%	8,192,983
▲ DAX (Germany)	10,929.43	1.38%	-2.42%	-3.50%	-15.39%	910,993
▲ FTSE 100 (United Kingdom)	6,880.19	1.08%	-0.67%	-2.45%	-10.50%	1,479,383
▲ CAC 40 (France)	4,909.45	2.15%	-0.71%	-2.96%	-7.59%	1,270,972
▲ IBEX 35 (Spain)	8,853.40	1.35%	-1.76%	-2.46%	-11.85%	480,035
▼ MSCI AC Asia Pacific Index	150.46	-0.34%	-3.64%	-2.52%	-14.92%	16,383,273
▲ HANG SENG (Hong Kong)	26,186.71	1.81%	-2.30%	1.53%	-12.48%	2,496,631
▲ SHANGHAI SEC Comp. (China)	2,802.15	0.31%	-1.80%	-1.99%	-21.32%	4,087,754
▲ NIKKEI 225 (Japan)	21,602.75	2.15%	-1.44%	-0.95%	-5.11%	3,201,181
▲ BOVESPA (Brazil)	86,977.46	0.65%	-2.32%	1.70%	13.84%	672,910
▲ MERVAL (Argentina)	31,081.37	0.45%	-2.20%	5.64%	3.38%	89,827

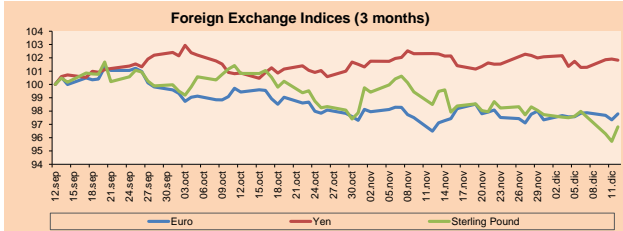
*Legend: Variation 1D: 1 Day; 5D: 5 Days; 1M: 1 Month; YTD: Var.% 12/31/17 to date



Source: Bloomberg

Currency	Price	1 D*	5 D*	1 M*	YTD*
▲ Euro	1.1369	0.46%	0.22%	1.35%	-5.30%
▲ Yen	113.2900	-0.08%	0.09%	-0.48%	0.53%
▲ Sterling Pound	1.2629	1.14%	-0.82%	-1.71%	-6.54%
▲ Yuan	6.8800	-0.29%	0.34%	-1.20%	5.74%
▲ Hong Kong Dollar	7.8130	-0.06%	-0.01%	-0.27%	-0.01%
▲ Brazilian Real	3.8531	-1.21%	-0.32%	2.34%	16.46%
▲ Argentine Peso	37.5882	-0.69%	0.22%	5.74%	101.84%

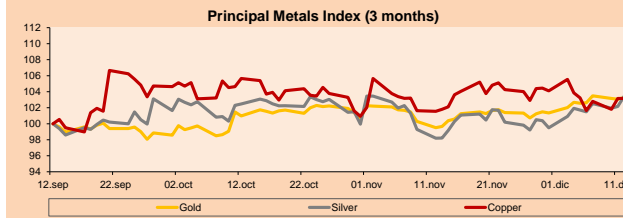
*Legend: Variation 1D: 1 Day; 5D: 5 Days; 1M: 1 Month; YTD: Var.% 12/31/17 to date



Base: 12/09/18=100
Source: Bloomberg

Commodities	Close	1 D*	5 D*	1 M*	YTD*
▲ Oro (US\$ Oz. T) (LME)	1,245.66	0.20%	0.68%	3.77%	-4.40%
▲ Plata (US\$ Oz. T) (LME)	14.74	1.22%	1.67%	5.30%	-12.99%
- Cobre (US\$ TM) (LME)	6,170.50	0.00%	-0.07%	1.59%	-14.38%
- Zinc (US\$ TM) (LME)	2,667.00	0.00%	-2.77%	4.06%	-20.09%
▼ Petróleo WTI (US\$ Barril) (NYM)	51.20	-0.87%	-3.20%	-14.78%	-11.34%
- Estano (US\$ TM) (LME)	19,148.00	0.00%	-0.29%	-0.76%	-4.72%
- Plomo (US\$ TM) (LME)	1,965.25	0.00%	-0.19%	3.01%	-20.91%
- Molibdeno (US\$ TM) (LME)	24,885.00	0.00%	0.00%	0.01%	59.13%
▼ Azúcar #11 (US\$ Libra) (NYB-ICE)	12.74	-0.70%	0.16%	-1.55%	-18.80%
▲ Cacao (US\$ TM) (NYB-ICE)	2,162.00	2.17%	2.46%	-3.83%	9.97%
▲ Café Arábica (US\$ TM) (NYB-ICE)	103.05	0.68%	-2.74%	-9.61%	-26.39%

*Lenda: Variación 1D: 1 Día; 5D: 5 Días; 1M: 1 Mes; YTD: Var.% 31/12/17 a la fecha



Base: 12/09/18=100
Source: Bloomberg

Equity

Alemania (Acciones del DAX Index)

Largest gains	Curr.	Price	▲%	Exchange	Largest losses	Curr.	Price	▼%	Exchange
DBK GY	EUR	7.862	5.81	Xetra	LN GY	EUR	140.5	-0.92	Xetra
RWE GY	EUR	19.225	3.19	Xetra	DPW GY	EUR	25.24	-0.16	Xetra
VOW3 GY	EUR	150.14	2.77	Xetra	WDI GY	EUR	137	0.22	Xetra
LHA GY	EUR	19.685	2.63	Xetra	FME GY	EUR	62.42	0.26	Xetra

Europe (Stocks from STOXX EUROPE 600)

Largest gains	Curr.	Price	▲%	Exchange	Largest losses	Curr.	Price	▼%	Exchange
WAF GY	EUR	77.5	7.55	Xetra	W/G LN	Gbp	578.6	-10.18	Londres
FRE GY	EUR	42.38	6.86	Xetra	SBRV LN	Gbp	275	-7.22	Londres
ATO FP	EUR	72.36	6.41	EN Paris	ITX SQ	EUR	25.05	-4.86	Soc Bol SIBE
CPI LN	Gbp	116.05	6.27	Londres	HMB SS	SEK	158.24	-2.99	Stockholm

Global Overview:

United States:

The United States ended the trading day with positive results among its main stock indices due to the improvement of the international panorama. The SPX managed to close at +0.54% and the Dow Jones at +0.64%, while the Nasdaq (+0.95%) led the gains and closed positive for the third consecutive day, where the materials sector was one of those with the best yields. With respect to the Huawei case, Donald Trump confirmed that he would be willing to intervene in the situation if that guarantees a trade agreement with China, providing relief to investors who expect a long-term commercial solution. However, the 10-year Treasury yield rate rose slightly to 2.914%. In other news, Arisebank, the company that earlier this year claimed to have raised the surprising sum of 5600 million with cryptocurrencies, today agreed to pay \$2.7 million penalty in an agreement with the SEC (Securities and Exchange Commission) for having made a public offer of unregistered currency, an important case of the SEC where they seek to control public offers where companies use tokens instead of shares. On the other hand, in macroeconomic news, the price level remained unchanged between October and November.

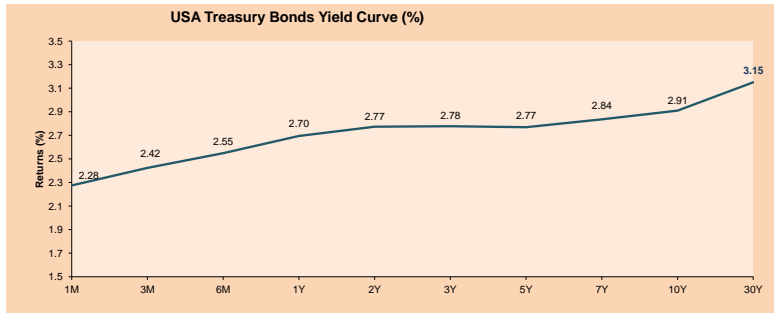
Europe:

The main European markets advanced sustainably in today's session, investors were enthusiastic with the hope that the Sino-US trade conflict could be defuse, as a result of the talks between both countries. The increase in the price of oil supports the advance of heavyweights in the energy sector as Total S.A. (+1.48%) and Royal Dutch Shell PLC (+0.7%). The Prime Minister, Theresa May, will face a vote of no confidence today, the results will be known at 9 pm (local time in London). The vote was called by members of the ruling party, the anti-EU Conservative wing, local reports say that the May could succeed, since there are no signs of greater possibilities of negotiation with the EU, but the decision of each parliamentarian will be secret. In case of losing the vote, the new person in office would have until January 21 to achieve some variation in Brexit conditions, which is perceived as difficult by analysts. In other news, the impact on the French fiscal balance caused by increases in wages and tax cuts could spell the end of the EU dispute with Rome over the breaking of fiscal rules.

Asia:

The Asian stock market closed the session with positive results among its main indices. Shares in Japan and Hong Kong led gains in Asia on Wednesday, as markets seemed prepared for a kind of relief rally. The Nikkei, NIK (+2.15%) led by financial stocks, rose 2.2%, with Daiwa Securities (+3.49%) above 3%. Meanwhile, reflecting continued caution about trade tensions between the United States and China prompted many actions driven by domestic demand. Cosmetics maker Kose (+5.74%) and food company Ajinomoto (+4.09%) jumped almost 6% and 4%. On the other hand, the Chinese stock indices fell behind in the strong gains seen in most Asian markets. The SHCOMP composed of Shanghai, rose only 0.31%, while others made equally modest movements. The importance of China as the world's largest economy in one measure, and its role as a key consumer of commodities means that the weakness in its economy will continue to impact the economy and global markets, said Bank of America Merrill Lynch. China's GDP growth is expected to slow to 6.1% next year, as official data probably underestimate the real weakness due to "data smoothing," the broker says.

ETFs	Curr.	Close	1D	5D	30 D	YTD	Exchange
SPDR S&P 500 ETF TRUST	USD	265.46	0.50%	-1.77%	-2.61%	-0.52%	NYSE Arca
ISHARES MSCI EMERGING MARKET	USD	40.41	1.63%	-1.49%	2.98%	-14.24%	NYSE Arca
ISHARES IBOXX HIGH YLD CORP	USD	83.31	0.33%	0.04%	-0.63%	-4.53%	NYSE Arca
FINANCIAL SELECT SECTOR SPDR	USD	24.66	0.57%	-5.01%	-7.22%	-11.64%	NYSE Arca
VANECK VECTORS GOLD MINERS E	USD	20.44	2.15%	-4.29%	9.63%	-12.05%	NYSE Arca
ISHARES RUSSEL 2000 ETF	USD	144.82	0.98%	-1.83%	4.11%	-5.01%	NYSE Arca
SPDR GOLD SHARES	USD	117.79	0.21%	0.57%	3.63%	-4.74%	NYSE Arca
ISHARES 20+ YEAR TREASURY BO	USD	118.35	-0.45%	0.45%	3.73%	-6.71%	NASDAQ GM
INVESCO QQQ TRUST SERIES 1	USD	165.05	0.88%	-0.40%	-0.77%	5.96%	NASDAQ GM
ISHARES NASDAQ BIOTECHNOLOGY	USD	105.48	1.26%	-1.15%	0.99%	-1.21%	NASDAQ GM
ENERGY SELECT SECTOR SPDR	USD	63.34	0.40%	-3.50%	-5.58%	-12.34%	NYSE Arca
PROSHARES ULTRA VIX ST FUTUR	USD	63.71	-1.21%	11.81%	13.57%	24.80%	NYSE Arca
UNITED STATES OIL FUND LP	USD	10.82	-1.19%	-3.22%	-13.30%	-9.91%	NYSE Arca
ISHARES MSCI BRAZIL ETF	USD	38.69	1.68%	-1.50%	-0.67%	-4.35%	NYSE Arca
SPDR S&P OIL & GAS EXP & PR	USD	30.63	0.56%	-6.39%	-12.81%	-17.62%	NYSE Arca
UTILITIES SELECT SECTOR SPDR	USD	56.44	-0.63%	0.44%	2.92%	7.14%	NYSE Arca
ISHARES US REAL ESTATE ETF	USD	80.01	-1.65%	-1.09%	-0.31%	-1.23%	NYSE Arca
SPDR S&P BIOTECH	USD	80.08	1.53%	-0.47%	3.12%	-5.64%	NYSE Arca
ISHARES IBOXX INVESTMENT GRA	USD	112.55	0.11%	0.91%	0.34%	-7.41%	NYSE Arca
ISHARES JPM MORGAN USD EMERGI	USD	104.33	0.18%	0.65%	0.10%	-10.14%	NASDAQ GM
REAL ESTATE SELECT SECT SPDR	USD	33.25	-1.89%	-0.92%	0.15%	0.94%	NYSE Arca
ISHARES CHINA LARGE-CAP ETF	USD	41.26	-1.45%	-1.76%	4.35%	-10.63%	NYSE Arca
CONSUMER STAPLES SPDR	USD	55.10	-0.13%	-0.47%	-2.51%	-3.15%	NYSE Arca
VANECK VECTORS JUNIOR GOLD M	USD	28.37	1.50%	4.46%	6.85%	-16.88%	NYSE Arca
SPDR BBG BARC HIGH YIELD BND	USD	34.61	0.29%	-0.06%	-0.89%	-5.75%	NYSE Arca
VANGUARD REAL ESTATE ETF	USD	80.37	-1.54%	-1.02%	-0.48%	-3.15%	NYSE Arca



Source: Bloomberg

Capital Market Laboratory Coordinator: Economist Bruno Bellido Anicama
Support: Lital Fernandez, Samuel Machacuay, Maria Pia Quijano, Jorge Retamozo
e-mail: pulsobursatil@ulima.edu.pe
facebook: www.facebook.com/pulsobursatil.ul
Phone number : 4376767 Annexes: 35340 - 35310

PULSO BURSÁTIL

LIMA

Stocks

Ticker	Currency	Price	1D*	5D*	30D*	YTD*	Frequency	Volume (US\$)	Beta	Dividend Yield (%)	Price Earning	Market Cap. (M US\$)	Economic Sector*	Index Weight
▲ ALICORC1 PE**	S/.	10.16	0.30%	-2.78%	3.67%	-4.15%	100.00%	1,074,396	0.63	2.36	17.67	2,585.40	Industrial	3.53%
▲ ATACOBC1 PE**	S/.	0.34	0.00%	-2.90%	-15.19%	-50.74%	94.74%	197	1.49	0.00	-	166.37	Mining	1.02%
▼ BACKUSI1 PE**	S/.	21.75	-1.14%	-1.14%	3.08%	18.14%	63.16%	261,003	0.44	5.39	8.86	8,273.65	Industrial	0.82%
▼ BAP PE**	US\$	217.80	-1.60%	-3.20%	-1.89%	4.71%	94.74%	531,943	1.08	1.98	-	17,372.05	Diverse	5.82%
▲ BVN PE**	US\$	15.20	1.33%	3.26%	10.79%	7.65%	94.74%	289,825	1.54	0.57	-	3,867.88	Mining	5.88%
- CASAGRC1 PE**	S/.	4.00	0.00%	-1.96%	2.56%	-35.38%	100.00%	6,281	0.96	0.47	173.80	100.33	Agricultural	1.31%
▲ CONTINC1 PE**	S/.	3.95	1.28%	1.28%	5.33%	4.64%	94.74%	316,883	0.55	3.60	15.30	6,314.50	Finance	2.85%
▼ CORAREI1 PE**	S/.	0.67	-1.47%	-5.63%	3.08%	-6.94%	100.00%	57,212	1.14	7.84	4.08	295.31	Industrial	1.72%
▲ CPACASC1 PE**	S/.	6.40	0.79%	-2.88%	-2.29%	-21.47%	100.00%	570,143	0.76	5.89	30.20	814.09	Industrial	2.38%
- CVERDEC1 PE**	US\$	21.23	0.00%	-0.79%	-3.46%	-28.52%	94.74%	231,040	1.08	2.69	19.11	7,431.69	Mining	5.25%
- ENGEPEC1 PE**	S/.	2.00	0.00%	0.00%	1.52%	1.01%	57.89%	4,840	0.74	0.00	9.01	1,690.59	Public Services	1.44%
▼ ENDISPC1**	S/.	5.36	-0.37%	-0.37%	-0.19%	-4.96%	52.63%	175,602	0.79	4.00	10.06	1,019.18	Public Services	0.98%
▲ FERREYC1 PE**	S/.	2.33	1.30%	-2.10%	1.30%	-8.63%	100.00%	1,482,077	0.97	5.81	10.07	676.93	Diverse	4.90%
- GRAMONC1 PE**	S/.	2.08	0.00%	-4.59%	-0.95%	11.23%	94.74%	135,909	0.80	0.00	-	408.81	Diverse	4.05%
▼ IFS PE**	US\$	41.36	-0.07%	-0.36%	8.53%	7.43%	94.74%	545,292	0.57	3.38	14.12	4,678.27	Diverse	7.22%
- INRETC1 PE**	US\$	29.00	0.00%	-0.68%	10.86%	38.10%	100.00%	568,400	1.00	0.00	52.73	2,981.41	Diverse	5.28%
- LUSURC1 PE**	S/.	10.50	0.00%	0.00%	0.00%	-12.86%	94.74%	110,509	0.51	6.57	10.26	1,522.49	Public Services	1.81%
▲ MINSURH1 PE**	S/.	1.39	2.21%	-1.42%	2.21%	-22.78%	78.95%	83,935	1.34	0.00	0.78	1,193.27	Mining	3.09%
▲ PML PE**	US\$	0.18	2.33%	-2.22%	0.57%	-45.00%	73.68%	2,440	1.59	0.00	-	46.44	Mining	2.12%
- RELAPAC1 PE**	S/.	0.13	0.00%	-2.27%	2.38%	-58.39%	100.00%	50,842	1.05	0.00	422.09	135.78	Industrial	2.12%
- SCCO PE**	US\$	32.00	0.00%	-3.35%	-13.70%	-32.72%	84.21%	447,263		4.38	14.13	24,737.42	Mining	2.14%
▼ SIDERC1 PE**	S/.	0.55	-3.51%	-3.51%	-1.79%	14.58%	73.68%	16,267	1.47	0.00	5.98	201.10	Industrial	1.43%
▲ TV PE**	US\$	0.33	2.80%	-4.35%	4.76%	-72.50%	100.00%	29,444	1.70	0.00	-	274.29	Mining	2.93%
▲ UNACEMC1 PE**	S/.	2.70	2.27%	-2.17%	22.73%	-10.00%	94.74%	703,388	0.72	1.93	24.32	1,323.75	Industrial	3.00%
▲ VOLCABC1 PE**	S/.	0.76	4.11%	1.33%	5.56%	-42.42%	100.00%	703,128	1.74	1.80	-	2,255.23	Mining	5.90%

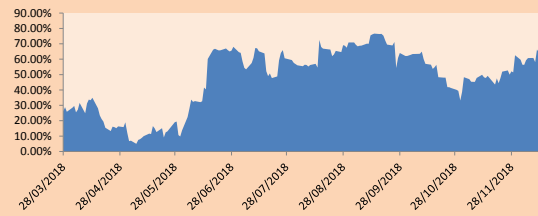
Quantity of shares: 25
 Source: Bloomberg, Economática
 * Bloomberg Industry Classification System
 ** PER is used in the stock market and original currency of the instrument
 *Legend: Variation 1D: 1 Day; 5D: 5 Days, 1M: 1 Month; YTD: Var.% 12/31/17 to date

Sectorial Indices

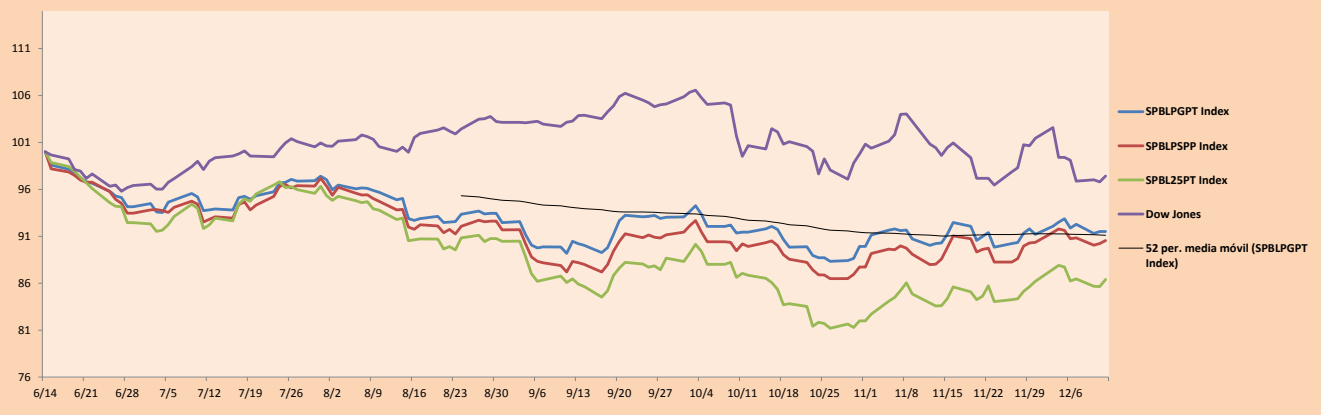
	Close	1D*	5D*	30D*	YTD*	Beta
▲ Mining Index	283.21	0.92%	-0.47%	-1.25%	-20.33%	1.76
▼ Consumer Index	1,030.37	-0.05%	-1.86%	5.97%	14.28%	0.35
▲ Industrial Index	223.03	0.88%	-2.71%	3.88%	-5.48%	0.85
▼ Banking and Financial Index	1,181.06	-1.33%	-2.95%	-0.89%	10.47%	1.02
▲ Construction Index	250.14	0.72%	-3.07%	5.32%	-5.65%	0.81
▼ Services Index	396.15	-0.06%	-0.06%	-0.13%	-4.90%	0.11
▲ Juniors Index	28.91	1.05%	-2.17%	-0.72%	-34.04%	1.06
▼ Electric Index	386.74	-0.06%	-0.06%	-0.13%	-4.90%	0.11

*Legend: Variation 1D: 1 Day; 5D: 5 Days, 1M: 1 Month; YTD: Var.% 12/31/17 to date

Correlation Graph of Returns of Mining Index against Metallic Index of London (3 months)



Indices (6 months)



Source: Bloomberg

Capital Market Laboratory Coordinator: Economist Bruno Bellido Anicama
 Support: Lith Fernandez, Samuel Machacuay, Maria Pia Quijano, Jorge Retamozo
 e-mail: pulsobursatil@ulima.edu.pe
 facebook: www.facebook.com/pulsobursatil.ul
 Phone number : 4376767 Annexes: 35340 - 35310

The content of this document is just for informational purposes. The information and opinions expressed should not be consider as recommendations for future decisions. Under any circumstances, the Capital Market Laboratory of University of Lima will be responsible for the use of the statements in this document.

PULSO BURSÁTIL

SOVEREIGN RATING

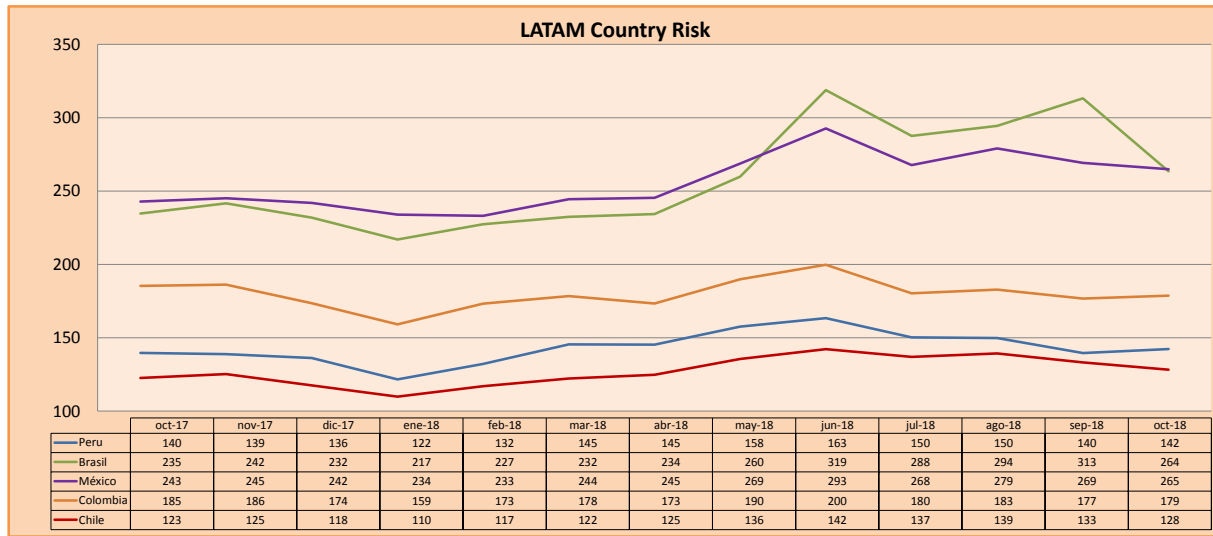
RISK RATINGS

Moody's	S&P	Fitch	
Aaa	AAA	AAA	Prime
Aa1	AA+	AA+	High credit quality
Aa2	AA	AA	
Aa3	AA-	AA-	
A1	A+	A+	Medium-high grade, with low credit risk
A2	A	A	
A3	A-	A-	
Baa1	BBB+	BBB+	Moderate Credit Risk
Baa2	BBB	BBB	
Baa3	BBB-	BBB-	
Ba1	BB+	BB+	It has speculative elements and it is subject to substantial credit risk
Ba2	BB	BB	
Ba3	BB-	BB-	
B1	B+	B+	It is considered speculative and it has high credit risk
B2	B	B	
B3	B-	B-	
Caa1	CCC+		Bad credit conditions and it is subject to high credit risk
Caa2	CCC		
Caa3	CCC-	CCC	
Ca	C		Very close to default or in default
		DDD	
C	D	DD D	

Source: Bloomberg

Latin America Credit Rating			
Clasificadora de riesgo			
Country	Moody's	Fitch	S&P
Peru	A3	BBB+	BBB+
Mexico	Invalid Security	Invalid Security	Invalid Security
Venezuela	C	C	SD
Brazil	Ba2	BB-	BB-
Colombia	Baa2	BBB	BBB-
Chile	A1	A	A+
Argentina	B2	B	B
Panama	Baa2	BBB	BBB

Source: Bloomberg



Source: Bloomberg

Capital Market Laboratory Coordinator: Economist Bruno Bellido Anicama
 Support: Lith Fernandez, Samuel Machacuay, Maria Pia Quijano, Jorge Retamozo
 e-mail: pulsobursatil@ulima.edu.pe
 facebook: www.facebook.com/pulsobursatil.ul
 Phone number : 4376767 Annexes: 35340 - 35310

The content of this document is just for informational purposes. The information and opinions expressed should not be considered as recommendations for future decisions. Under any circumstances, the Capital Market Laboratory of University of Lima will be responsible for the use of the statements in this document.