



PULSO BURSÁTIL

LIMA

Stocks

Ticker	Currency	Price	1D*	5D*	30D*	YTD*	Frequency	Volume (US\$)	Beta	Dividend Yield (%)	Price Earning	Market Cap. (M US\$)	Economic Sector*	Index Weight
▼ ALICORC1 PE**	S/.	10.10	-1.46%	-0.30%	1.92%	-4.72%	100.00%	4,733,345	0.63	2.38	17.57	2,578.27	Industrial	3.53%
▼ ATACOCB1 PE**	S/.	0.33	-0.60%	-0.60%	-10.48%	-51.03%	90.00%	1,609	1.55	0.00	-	166.65	Mining	1.02%
▼ BACKUSI1 PE**	S/.	20.58	-0.10%	-6.45%	-4.28%	11.79%	65.00%	9,533	0.46	5.70	8.38	8,100.81	Industrial	0.82%
▼ BAP PE**	US\$	215.68	-0.31%	-2.56%	-4.81%	3.69%	95.00%	2,195,168	1.08	2.00	-	17,202.95	Diverse	5.82%
▲ BVN PE**	US\$	15.90	0.32%	6.00%	6.71%	12.61%	95.00%	2,019,481	1.53	0.54	-	4,046.00	Mining	5.88%
▼ CASAGRC1 PE**	S/.	3.92	-0.25%	-2.00%	-2.00%	-36.67%	100.00%	1,817	0.99	0.48	170.32	98.63	Agricultural	1.31%
- CONTINC1 PE**	S/.	3.95	0.00%	1.28%	1.54%	4.64%	95.00%	170,352	0.57	3.60	15.30	6,334.49	Finance	2.85%
- CORAREI1 PE**	S/.	0.67	0.00%	-1.47%	-1.47%	-6.94%	100.00%	3,002	1.14	7.84	4.08	296.24	Industrial	1.72%
- CPACASC1 PE**	S/.	6.45	0.00%	1.57%	-1.07%	-20.86%	100.00%	222,452	0.77	5.85	30.43	823.00	Industrial	2.38%
▲ CVERDEC1 PE**	US\$	21.30	1.43%	0.33%	-0.93%	-28.28%	95.00%	427,998	1.08	2.68	19.17	7,456.19	Mining	5.25%
- ENGEPEC1 PE**	S/.	1.97	0.00%	-1.50%	1.03%	-0.51%	55.00%	986	0.75	0.00	8.87	1,670.50	Public Services	1.44%
- ENDISPC1**	S/.	5.33	0.00%	-0.93%	-1.48%	-5.50%	55.00%	2,337	0.78	0.00	10.01	1,016.68	Public Services	0.98%
▲ FERREYC1 PE**	S/.	2.45	4.26%	6.52%	3.38%	-3.92%	100.00%	665,880	0.94	5.53	10.59	714.05	Diverse	4.90%
▼ GRAMONC1 PE**	S/.	2.08	-0.48%	0.00%	1.46%	11.23%	95.00%	38,272	0.81	0.00	-	410.11	Diverse	4.05%
▼ IFS PE**	US\$	40.00	-0.42%	-3.36%	1.91%	3.90%	95.00%	335,082	0.58	3.50	13.61	4,524.43	Diverse	7.22%
▼ INRETC1 PE**	US\$	28.45	-0.18%	-1.90%	0.53%	35.48%	100.00%	12,106	1.00	0.00	51.57	2,924.87	Diverse	5.28%
- LUSURC1 PE**	S/.	10.90	0.00%	3.81%	3.81%	-9.54%	90.00%	34,259	0.49	8.35	10.66	1,585.50	Public Services	1.81%
▲ MINSURH1 PE**	S/.	1.40	1.45%	2.94%	0.00%	-22.22%	85.00%	14,583	1.32	0.00	0.78	1,205.66	Mining	3.09%
▲ PML PE**	US\$	0.20	21.21%	16.28%	14.29%	-37.50%	70.00%	17,358	1.59	0.00	-	52.77	Mining	2.12%
▲ RELAPAC1 PE**	S/.	0.13	-1.54%	-0.78%	4.07%	-58.71%	100.00%	2,371	1.06	0.00	420.14	135.16	Industrial	2.12%
▼ SCCO PE**	US\$	31.10	-1.27%	-2.81%	-17.94%	-34.61%	85.00%	17,037	1.70	4.50	13.73	24,041.68	Mining	2.14%
- SIDERC1 PE**	S/.	0.55	0.00%	-3.51%	-5.17%	14.58%	80.00%	22,462	1.46	0.00	5.98	201.74	Industrial	1.43%
▼ TV PE**	US\$	0.29	-1.69%	-9.66%	-21.62%	-75.83%	95.00%	118,136	1.71	0.00	-	241.05	Mining	2.93%
▲ UNACEMC1 PE**	S/.	2.69	1.51%	1.89%	28.10%	-10.33%	95.00%	16,071	0.73	1.93	24.23	1,323.03	Industrial	3.00%
▲ VOLCABC1 PE**	S/.	0.74	1.37%	1.37%	1.37%	-43.94%	100.00%	55,253	1.78	1.84	-	2,247.78	Mining	5.90%

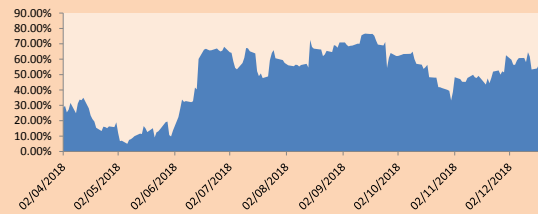
Quantity of shares: 25
 Source: Bloomberg, Economática
 * Bloomberg Industry Classification System
 ** PER is used in the stock market and original currency of the instrument
 *Legend: Variation 1D: 1 Day; 5D: 5 Days, 1M: 1 Month; YTD: Var.% 12/31/17 to date

Sectorial Indices

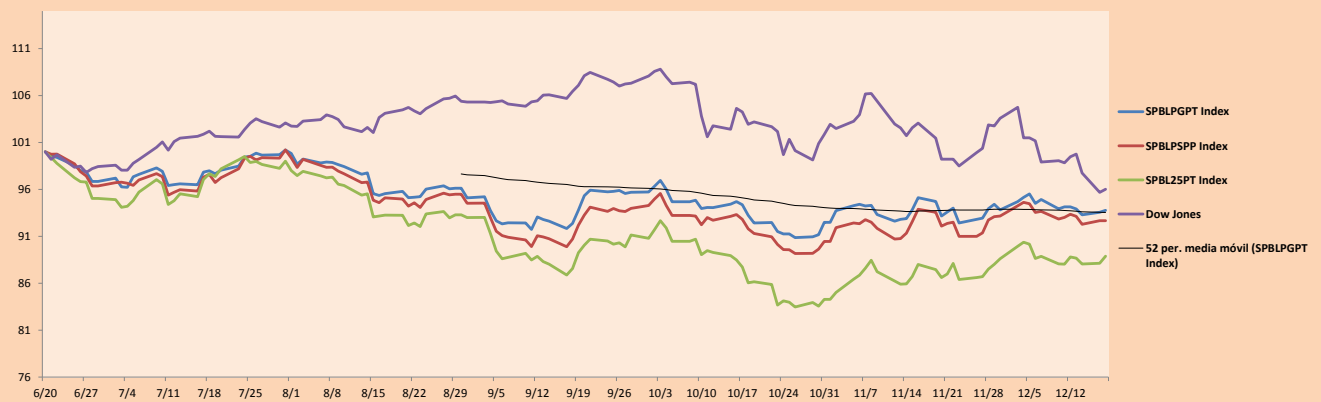
	Close	1D*	5D*	30D*	YTD*	Beta
▲ Mining Index	284.25	0.18%	1.29%	-5.55%	-20.04%	1.75
▼ Consumer Index	1,012.17	-0.67%	-1.81%	0.42%	12.26%	0.35
▲ Industrial Index	226.84	1.55%	2.61%	5.74%	-3.87%	0.84
▲ Banking and Financial Index	1,168.94	0.19%	-2.34%	-3.78%	9.33%	1.01
▲ Construction Index	250.42	0.32%	0.83%	7.20%	-5.55%	0.80
- Services Index	398.85	0.00%	0.62%	0.44%	-4.26%	0.12
▲ Juniors Index	29.42	10.98%	2.83%	1.62%	-32.88%	1.09
- Electric Index	389.38	0.00%	0.63%	0.44%	-4.25%	0.12

*Legend: Variation 1D: 1 Day; 5D: 5 Days, 1M: 1 Month; YTD: Var.% 12/31/17 to date

Correlation Graph of Returns of Mining Index against Metallic Index of London (3 months)



Indices (6 months)



Source: Bloomberg

Capital Market Laboratory Coordinator: Economist Bruno Bellido Anicama
 Support: Samuel Machacuay, Jorge Retamozo.
 e-mail: pulsobursatil@ulima.edu.pe
 facebook: www.facebook.com/pulsobursatil.ul
 Phone number : 4376767 Annex: 35340

The content of this document is just for informational purposes. The information and opinions expressed should not be considered as recommendations for future decisions. Under any circumstances, the Capital Market Laboratory of University of Lima will be responsible for the use of the statements in this document.



PULSO BURSÁTIL

SOVEREIGN RATING

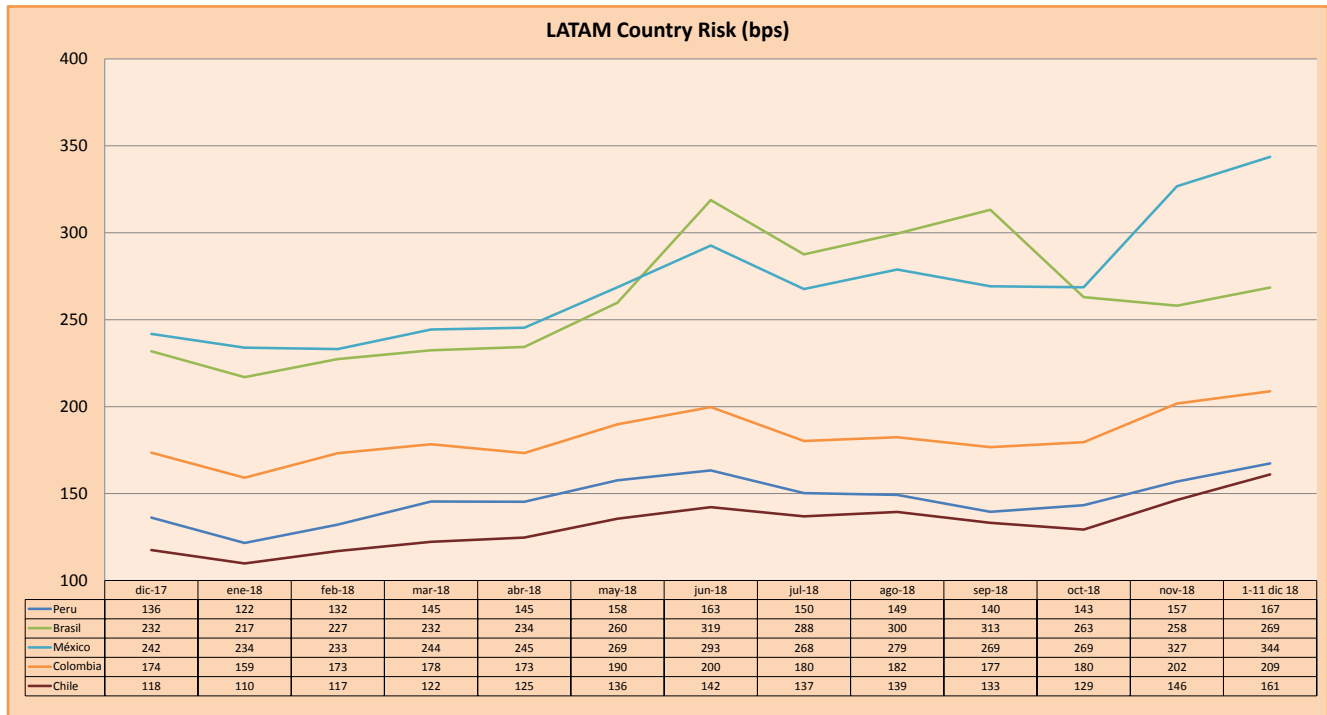
RISK RATINGS

Moody's	S&P	Fitch	
Aaa	AAA	AAA	Prime
Aa1	AA+	AA+	High credit quality
Aa2	AA	AA	
Aa3	AA-	AA-	
A1	A+	A+	Medium-high grade, with low credit risk
A2	A	A	
A3	A-	A-	
Baa1	BBB+	BBB+	Moderate Credit Risk
Baa2	BBB	BBB	
Baa3	BBB-	BBB-	
Ba1	BB+	BB+	It has speculative elements and it is subject to substantial credit risk
Ba2	BB	BB	
Ba3	BB-	BB-	
B1	B+	B+	It is considered speculative and it has high credit risk
B2	B	B	
B3	B-	B-	
Caa1	CCC+		Bad credit conditions and it is subject to high credit risk
Caa2	CCC		
Caa3	CCC-	CCC	
Ca	C		Very close to default or in default
		DDD	
C	D	DD D	

Source: Bloomberg

Latin America Credit Rating			
Clasificadora de riesgo			
Country	Moody's	Fitch	S&P
Peru	A3	BBB+	BBB+
Mexico	Invalid Security	Invalid Security	Invalid Security
Venezuela	C	C	SD
Brazil	Ba2	BB-	BB-
Colombia	Baa2	BBB	BBB-
Chile	A1	A	A+
Argentina	B2	B	B
Panama	Baa2	BBB	BBB

Source: Bloomberg



Source: BCRP

Capital Market Laboratory Coordinator: Economist Bruno Bellido Anicama
 Support: Samuel Machacuay, Jorge Retamozo.
 e-mail: pulsobursatil@ulima.edu.pe
 facebook: www.facebook.com/pulsobursatil.ul
 Phone number : 4376767 Annex: 35340

The content of this document is just for informational purposes. The information and opinions expressed should not be considered as recommendations for future decisions. Under any circumstances, the Capital Market Laboratory of University of Lima will be responsible for the use of the statements in this document.