



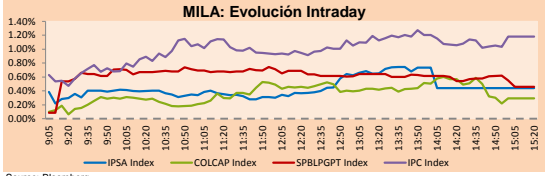
# PULSO BURSÁTIL

Lima, March 15, 2019

## MILA

Main Indices	Close	1 D	5 D	1 M	YTD	Market Cap. (US\$ bill)
▲ IPSA (Chile)	5,324.12	0.44%	0.93%	-1.40%	4.28%	170.50
▲ IGPA (Chile)	26,880.73	0.25%	0.66%	-1.53%	3.59%	231.88
▲ IGBC (Colombia)	12,933.26	0.75%	4.74%	6.60%	15.73%	109.51
▲ COLCAP (Colombia)	1,579.72	0.29%	5.04%	6.04%	19.13%	111.63
▲ S&P/BVL (Perú)*	20,919.07	0.46%	2.03%	2.59%	8.11%	110.52
▲ S&P/BVL SEL (Perú)	556.19	0.58%	1.69%	1.94%	8.56%	84.76
▲ S&P/BVL LIMA 25	27,646.17	0.18%	0.22%	-0.08%	4.29%	91.47
▲ IPC (México)	42,210.46	1.04%	1.48%	-1.83%	1.35%	267.98
▲ S&P MILA 40	688.48	0.80%	3.26%	1.66%	13.12%	293.22

\* Market Cap. Of the last price Legend: Variation 1D: 1 day; 5D: 5 days; 1M: 1 Month; YTD: Var%12/31/18 to date

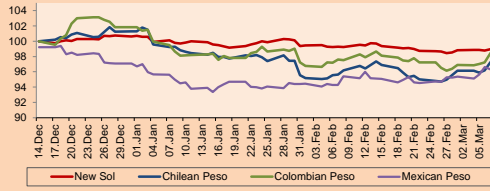


Source: Bloomberg

Currency	Price	1D*	5D*	30 D*	YTD*
▼ New Sol (PEN)	3,298.8	0.00%	-0.46%	-1.20%	-2.08%
▼ Chilean Peso (CLP)	668.74	-0.38%	-0.43%	0.75%	-3.64%
▼ Colombian Peso (COP)	3,119.49	-0.73%	-1.72%	-0.67%	-4.14%
▼ Mexican Peso (MXN)	19.21	-0.57%	-1.46%	-1.15%	-2.25%

\*Legend: Variation 1D: 1 day; 5D: 5 days; 1M: 1 Month; YTD: Var%12/31/18 to date

### MILA: Foreign Exchange Indices (3 months)

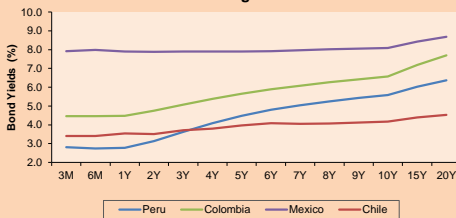


Base: 14/12/18=100 Source: Bloomberg

### Fixed Income

Instrument	Currency	Price	Bid Yield (%)	Ask Yield (%)	Duration
PERU 4.125 08/25/2027	USD	107.08	3.18	3.14	7.15
PERU 7.125 03/30/19	USD	100.382	-3.13	-7.25	0.03
PERU 7.35 07/21/25	USD	124.023	3.16	3.12	5.20
PERU 8.75 11/21/33	USD	152.779	3.98	3.95	9.43
PERU 6.55 03/14/37	USD	131.441	4.08	4.05	11.22
PERU 5.625 11/19/2050	USD	123.687	4.26	4.25	16.32
CHILE 2.25 10/30/22	USD	98.413	2.74	2.69	3.42
CHILE 3.875 08/05/20	USD	101.603	2.78	2.58	1.34
CHILE 3.625 10/30/2042	USD	96.587	3.86	3.83	15.59
COLOM 11.75 02/25/20	USD	108.255	2.87	2.58	0.90
COLOM 11.85 03/09/28	USD	157.517	4.15	4.09	6.32
COLOM 10.375 01/28/33	USD	152.347	5.10	5.04	8.57
COLOM 7.375 09/18/37	USD	127.676	5.07	5.04	11.10
COLOM 6.125 01/18/41	USD	114.578	5.03	5.01	12.61
MEX 4 10/02/23	USD	101.956	3.57	3.49	4.05
MEX5.55 01/45	USD	106.424	5.111	5.088	14.04

### MILA: Sovereign Yield Curves



Source: Bloomberg

Equity	Exchange	Amt.	Price	▲%	Largest losses	Exchange	Amt.	Price	▼%
HORNOS	Santia.	CLP	0.80	60.00	ELCOMEI1	Lima	PEN	1.30	-10.34
CONCONCRET	Colomb.	COP	480.00	6.67	POMALCC1	Lima	PEN	0.09	-6.12
ISA	Colomb.	COP	15480.00	3.20	PFAVAL	Colomb.	COP	1145.00	-4.98
RELAPAC1	Lima	PEN	0.17	3.13	PEHUENCHE	Santia.	CLP	2000.00	-3.03

Per Turnover	Exchange	Amount (US\$)	Per Volume	Exchange	Volume
ECOPETROL	Colomb.	25,101,174	BSANTANDER	Santia.	188,721,433
SQM-B	Santia.	24,077,100	CHILE	Santia.	96,914,514
FALABELLA	Santia.	22,222,403	VOLCABC1	Lima	83,556,530
COPEC	Santia.	20,517,600	VAPORES	Santia.	46,915,165
GRUPOSURA	Colomb.	18,819,092	COLBUN	Santia.	25,652,520

## MILA

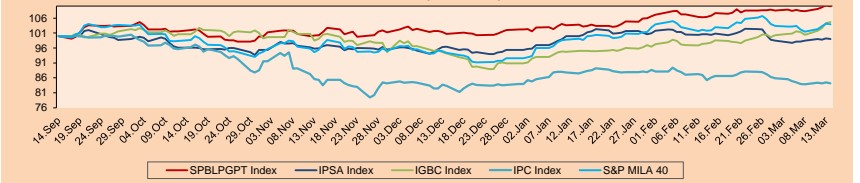
**Perú:** The General Index of the BVL ended today's session with a positive result of + 0.46%. The index maintains a cumulative positive annual trend of + 8.11% in local currency, while the adjusted yield in dollars amounts to + 10.41%. Then, the S&P/BVL Peru SEL fell by -0.95% while the S & P / BVL LIMA 25 increased by + 0.18%. The spot PEN reached S / 3.2945. **Highlights:** Peruvian Banking supports changes around the work of representation.

**Chile:** The IPSA index ended the day with a positive return of + 0.44%. The sectors of the index with the most positive results were Real Estate (+ 2.69%) and Consumer Discretionary (+ 2.14%). On the other hand, the values with the highest results were Parque Arauco SA (+ 2.69%) and SACI Falabella (+ 2.51%). **Highlights:** Parque Arauco agrees to purchase project in Antofagasta, Chile.

**Colombia:** The COLCAP index closed the session with a positive result of + 0.29%. The sectors with the highest yields were Energy (+ 2.36%) and Utilities (+ 2.24%). In addition, the highest shares were Concretoc SA (+ 6.7%) and Interconexión Eléctrica SA ESP (+ 3.20%). **Highlights:** Heavy production costs in Colombia increased more than 3% in February.

**México:** The IPC index closed today's session with a positive return of + 1.04%. The sectors of the index that generated the most positive results were Utilities (+ 2.20%) and Industrials (+ 1.83%). Finally, the stocks with the greatest positive changes were Alfa SAB de CV (+ 4.30%) and Mexichem SAB de CV (+ 3.16%). **Highlights:** Stocks of the Mexican Stock Exchange jump 3.1% reaching its maximum in 11 years.

### MILA: Stock Indices (6 months)

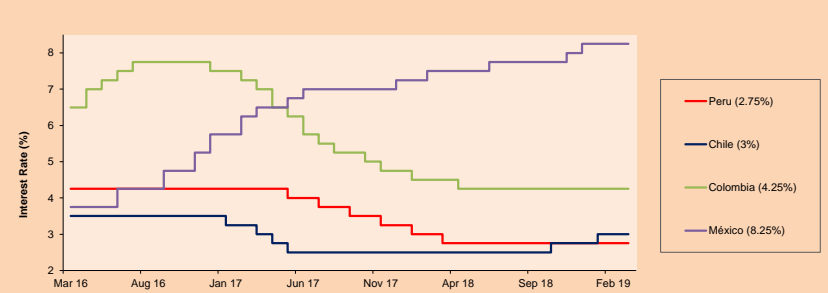


Base: 17/09/18=100 Source: Bloomberg

### ETFs

	Curr.	Close	1D	5D	30 D	YTD	Exchange
▲ iShares MSCI All Peru Capped Index Fund	USD	39.43	1.21%	2.44%	4.64%	11.07%	NYSE Arca
▲ iShares MSCI Chile Capped	USD	44.82	0.99%	2.03%	-1.47%	8.23%	Cboe BZX
▲ Global X MSCI Colombia	USD	13.6297	0.81%	5.25%	6.03%	22.13%	NYSE Arca
▲ iShares MSCI Mexico Capped	USD	43.16	1.46%	2.84%	1.24%	4.81%	NYSE Arca
▲ iShares MSCI Emerging Markets	USD	43.08	1.46%	3.46%	2.40%	10.29%	NYSE Arca
▲ Vanguard FTSE Emerging Markets	USD	42.57	1.36%	3.53%	4.21%	11.73%	NYSE Arca
▲ iShares Core MSCI Emerging Markets	USD	51.92	1.39%	3.39%	2.61%	10.12%	NYSE Arca
▲ iShares JP Morgan Emerging Markets Bonds	USD	59.34	1.11%	2.24%	1.70%	6.21%	Cboe BZX
▲ Morgan Stanley Emerging Markets Domestic	USD	6.77	1.04%	2.27%	0.89%	11.72%	New York

### MILA: Policy Rate



Source: Bloomberg

Capital Market Laboratory Coordinator: Economist Bruno Bellido Anicam  
Collaboration: Pablo Llanos, Samuel Machacuy, Jorge Retamozo, Marcia Rojas.  
e-mail: pulsobursatil@ulima.edu.pe  
facebook: www.facebook.com/pulsobursatil.ul  
Phone number : 4376767 Annex: 35340



# PULSO BURSÁTIL

## LIMA

### Stocks

Ticker	Currency	Price	1D*	5D*	30D*	YTD*	Frequency	Volume (US\$)	Beta	Dividend Yield (%)	Price Earning	Market Cap. (M US\$)	Economic Sector*	Index Weight
▲ ALICORC1 PE**	S/.	11.19	0.45%	-0.09%	-1.50%	12.46%	100.00%	381,869	0.63	2.14	21.03	2,893.06	Industrial	3.53%
▲ ATACOCB1 PE**	S/.	0.32	1.61%	-3.08%	-3.08%	-2.17%	100.00%	10,427	0.62	0.00	8.68	90.22	Mining	1.02%
- BACKUSH1 PE**	S/.	22.00	0.00%	0.00%	9.18%	7.06%	85.00%	4,822	0.45	5.33	8.41	8,968.43	Industrial	0.82%
▲ BAP PE**	US\$	248.35	0.96%	5.39%	4.33%	12.22%	100.00%	4,498,128	1.07	1.73	-	19,808.76	Diverse	5.82%
▲ BVN PE**	US\$	17.04	0.24%	2.65%	5.84%	5.84%	100.00%	941,588	1.12	0.51	-	4,687.92	Mining	5.88%
- CASAGRC1 PE**	S/.	3.99	0.00%	0.25%	0.00%	-1.72%	100.00%	13,870	0.79	0.48	-	101.88	Agricultural	1.31%
▲ CONTINC1 PE**	S/.	3.94	1.03%	1.03%	1.28%	-0.25%	100.00%	86,850	0.68	3.61	14.70	6,412.12	Finance	2.85%
- CORAREH1 PE**	S/.	0.79	0.00%	1.28%	1.28%	12.86%	100.00%	83,427	1.06	6.65	4.81	345.06	Industrial	1.72%
▼ CPACASC1 PE**	S/.	6.41	-0.77%	-1.38%	-2.44%	-0.62%	95.00%	93,029	0.69	5.88	35.61	829.67	Industrial	2.38%
▼ CVERDEC1 PE**	US\$	23.85	-0.21%	0.21%	11.45%	14.66%	100.00%	86,061	0.95	2.40	13.08	8,348.84	Mining	5.25%
▲ ENGEPEC1 PE**	S/.	2.10	0.96%	-1.41%	0.00%	8.25%	75.00%	8,360	0.66	8.30	9.10	1,807.14	Public Services	1.44%
- ENDISPC1**	S/.	5.51	0.00%	0.18%	4.95%	3.38%	65.00%	22,537	0.81	3.89	10.34	1,606.60	Public Services	0.98%
▼ FERREYC1 PE**	S/.	2.45	-1.61%	0.41%	-5.04%	-3.54%	100.00%	632,332	0.98	5.53	10.65	724.63	Diverse	4.90%
▼ GRAMONC1 PE**	S/.	2.02	-0.98%	-1.94%	6.32%	1.51%	85.00%	32,971	0.48	0.00	19.22	404.18	Diverse	4.05%
- IFS PE**	US\$	45.49	0.00%	3.15%	-3.21%	8.31%	95.00%	432,071	0.55	3.08	15.15	5,145.41	Diverse	7.22%
▲ INRETC1 PE**	US\$	35.30	1.44%	0.86%	6.97%	24.73%	100.00%	1,685,930	1.00	0.00	57.60	3,629.10	Diverse	5.28%
▼ LUSURC1 PE**	S/.	12.09	-0.08%	-1.71%	7.47%	10.41%	100.00%	62,661	0.52	6.12	9.65	1,784.66	Public Services	1.81%
▲ MINSUR1 PE**	S/.	1.73	2.37%	-1.14%	8.12%	25.36%	85.00%	71,867	1.41	4.38	0.98	1,511.94	Mining	3.09%
- PML PE**	US\$	0.16	0.00%	-1.81%	-4.12%	-6.86%	70.00%	2,680	1.58	0.00	-	43.01	Mining	2.12%
▲ RELAPAC1 PE**	S/.	0.17	3.13%	-1.20%	10.00%	30.95%	100.00%	57,174	0.41	0.00	549.82	176.81	Industrial	2.12%
▲ SCCO PE**	US\$	37.50	0.83%	4.46%	22.15%	24.20%	95.00%	47,861	5.18	5.18	18.75	28,989.17	Mining	2.14%
- SIDERC1 PE**	S/.	0.70	0.00%	0.00%	2.94%	27.27%	100.00%	72,846	1.41	0.00	6.52	260.56	Industrial	1.43%
- TV PE**	US\$	0.27	0.00%	4.58%	2.24%	-7.74%	100.00%	4,110	1.81	0.00	-	224.27	Mining	2.93%
▼ UNACEMC1 PE**	S/.	2.80	-1.06%	0.72%	6.46%	7.69%	90.00%	305,489	0.76	1.86	24.21	1,397.54	Industrial	3.00%
- VOLCABC1 PE**	S/.	0.63	0.00%	-3.08%	-13.70%	-11.27%	100.00%	15,976,889	1.28	2.17	24.78	778.54	Mining	5.90%

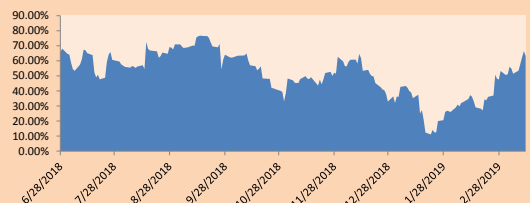
Quantity of shares: 25  
 Source: Bloomberg, Económica  
 \* Bloomberg Industry Classification System  
 \*\* PER is used in the stock market and original currency of the instrument  
 \*Legend: Variation 1D: 1 Day; 5D: 5 Days, 1M: 1 Month; YTD: Var.% 12/31/18 to date

### Sectorial Indices

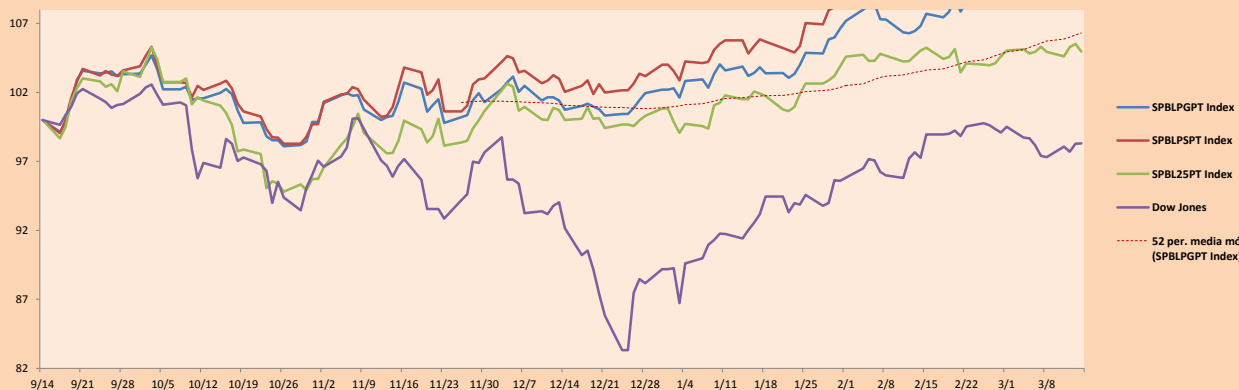
	Close	1D*	5D*	30D*	YTD*	Beta
▲ Mining Index	310.96	0.54%	2.14%	9.22%	9.17%	1.63
▲ Consumer Index	1,153.43	0.78%	0.06%	2.59%	14.70%	0.35
▼ Industrial Index	230.83	-0.95%	-0.26%	0.41%	1.73%	0.79
▲ Banking and Financial Index	1,303.83	0.88%	4.29%	2.49%	8.66%	1.19
▼ Construction Index	256.58	-0.72%	-0.58%	3.30%	4.35%	0.73
▲ Services Index	420.62	0.21%	0.31%	4.80%	5.79%	0.12
▲ Juniors Index	26.85	0.11%	-2.08%	-1.79%	-8.80%	0.79
▲ Electric Index	410.63	0.21%	0.32%	4.80%	5.79%	0.12

\*Legend: Variation 1D: 1 Day; 5D: 5 Days, 1M: 1 Month; YTD: Var.% 12/31/18 to date

Correlation Graph of Returns of Mining Index against Metallic Index of London (3 months)



Indices (6 months)



Source: Bloomberg

Capital Market Laboratory Coordinator: Economist Bruno Bellido Anicama  
 Collaboration: Pablo Llanos, Samuel Machacay, Jorge Retamozo, Marcia Rojas.  
 e-mail: pulsobursatil@ulima.edu.pe  
 facebook: www.facebook.com/pulsobursatil.ul  
 Phone number : 4376767 Annex: 35340

The content of this document is just for informational purposes. The information and opinions expressed should not be considered as recommendations for future decisions. Under any circumstances, the Capital Market Laboratory of University of Lima will be responsible for the use of the statements in this document.

# PULSO BURSÁTIL

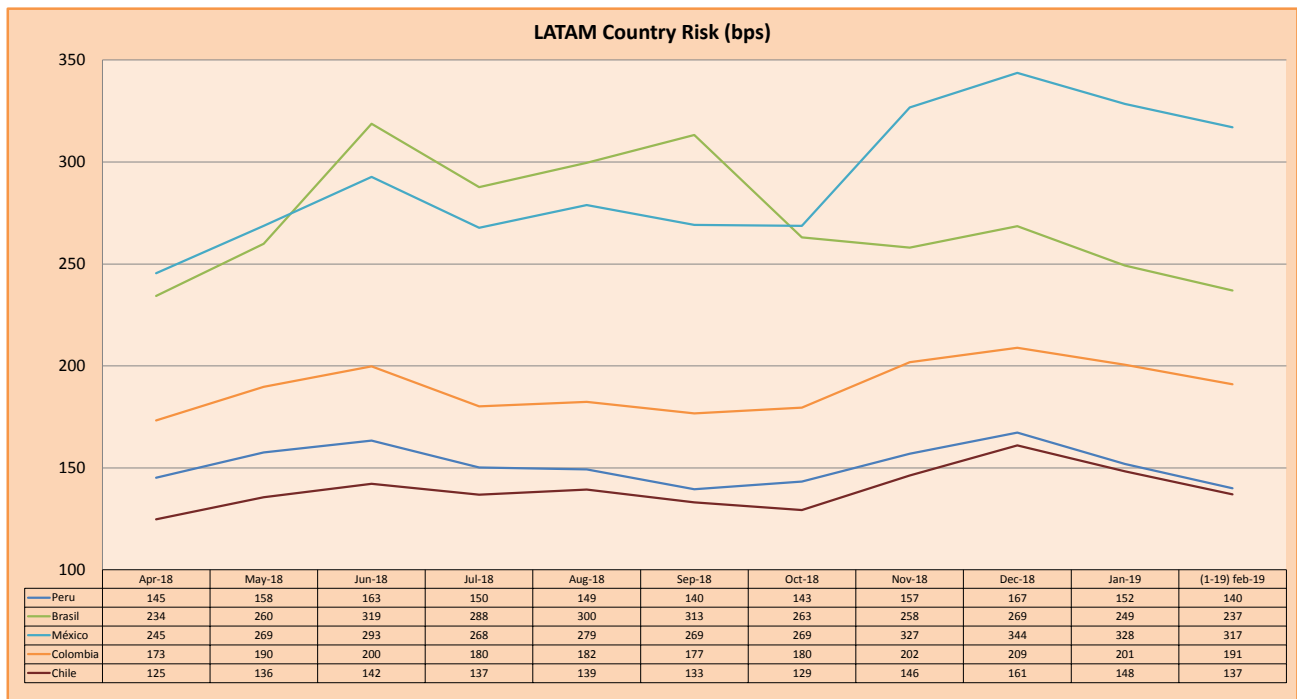
## SOVEREIGN RATING

RISK RATINGS			
Moody's	S&P	Fitch	
Aaa	AAA	AAA	Prime
Aa1	AA+	AA+	High credit quality
Aa2	AA	AA	
Aa3	AA-	AA-	
A1	A+	A+	Medium-high grade, with low credit risk
A2	A	A	
A3	A-	A-	
Baa1	BBB+	BBB+	Moderate Credit Risk
Baa2	BBB	BBB	
Baa3	BBB-	BBB-	
Ba1	BB+	BB+	It has speculative elements and it is subject to substantial credit risk
Ba2	BB	BB	
Ba3	BB-	BB-	
B1	B+	B+	It is considered speculative and it has high credit risk
B2	B	B	
B3	B-	B-	
Caa1	CCC+	CCC	Bad credit conditions and it is subject to high credit risk
Caa2	CCC		
Caa3	CCC-		
Ca	CC	DDD	Very close to default or in default
	C		
C	D		

Source: Bloomberg

Latin America Credit Rating			
Clasificadora de riesgo			
Country	Moody's	Fitch	S&P
Peru	A3	BBB+	BBB+
Mexico	A3	BBB+	BBB+
Venezuela	C	C	SD
Brazil	Ba2	BB-	BB-
Colombia	Baa2	BBB	BBB-
Chile	A1	A	A+
Argentina	B2	B	B
Panama	Baa1	BBB	BBB

Source: Bloomberg



Source: BCRP

Capital Market Laboratory Coordinator: Economist Bruno Bellido Anicama  
Support: Pablo Llanos, Samuel Machacuy, Jorge Retamozo, Marcia Rojas.  
e-mail: pulsobursatil@ulima.edu.pe  
facebook: www.facebook.com/pulsobursatil.ul  
Phone number : 4376767 Annex: 35340

The content of this document is just for informational purposes. The information and opinions expressed should not be consider as recommendations for future decisions. Under any circumstances, the Capital Market Laboratory of University of Lima will be responsible for the use of the statements in this document.