

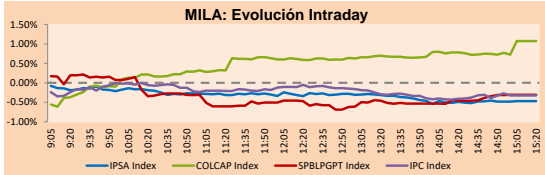
PULSO BURSÁTIL

Lima, April 22, 2019

MILA

Main Indices	Close	1 D	5 D	1 M	YTD	Market Cap. (US\$ bill)
▼ IPSA (Chile)	5,237.00	-0.47%	-0.05%	-1.30%	2.58%	168.87
▼ IGPA (Chile)	26,547.64	-0.40%	-0.08%	-1.01%	2.30%	216.49
▲ IGBC (Colombia)	12,981.60	1.40%	-1.32%	-0.96%	16.49%	106.09
▲ COLCAP (Colombia)	1,591.18	1.07%	-1.27%	-0.95%	20.00%	108.15
▲ S&P/BVL (Perú)*	20,873.79	-0.31%	-0.62%	-0.65%	7.87%	113.07
▲ S&P/BVL SEL (Perú)	560.80	0.07%	-0.06%	0.26%	9.46%	84.82
▲ S&P/BVL LIMA 25	27,748.44	-0.03%	-0.76%	-1.33%	4.68%	93.65
▲ IPC (México)	45,381.22	-0.32%	1.80%	7.51%	8.98%	296.61
▼ S&P MILA 40	682.42	-0.18%	0.13%	0.52%	12.12%	292.46

* Market Cap. Of the last price Legend: Variation 1D: 1 day; 5D: 5 days; 1M: 1 Month; YTD: Var%12/31/18 to date

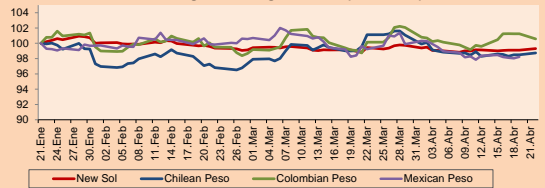


Source: Bloomberg

Currency	Price	1D*	5D*	30 D*	YTD*
▲ New Sol (PEN)	3,304.4	0.29%	0.29%	0.15%	-1.92%
▲ Chilean Peso (CLP)	663.94	0.24%	0.12%	-2.36%	-4.28%
▲ Colombian Peso (COP)	3,139.40	-0.67%	0.10%	0.43%	-3.40%
▲ Mexican Peso (MXN)	18.83	0.20%	-0.15%	-1.39%	-4.19%

*Legend: Variation 1D: 1 day; 5D: 5 days; 1M: 1 Month; YTD: Var%12/31/18 to date

MILA: Foreign Exchange Indices (3 months)

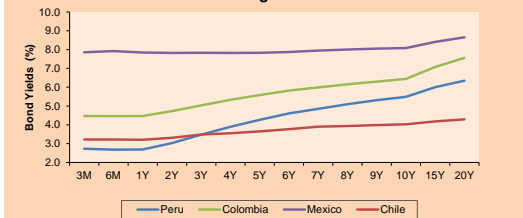


Base: 21/01/19=100 Source: Bloomberg

Fixed Income

Instrument	Currency	Price	Bid Yield (%)	Ask Yield (%)	Duration
PERU 4.125 08/25/2027	USD	107.916	3.07	3.02	7.07
PERU 7.125 03/30/19	USD	100.851	-255.48	-317.75	0.01
PERU 7.35 07/21/25	USD	124.703	3.01	2.96	5.11
PERU 8.75 11/21/33	USD	155.457	3.79	3.75	9.39
PERU 6.55 03/14/37	USD	134.02	3.91	3.87	11.20
PERU 5.625 10/30/22	USD	128.297	4.04	4.02	16.52
CHILE 2.25 10/30/22	USD	98.762	2.68	2.57	3.32
CHILE 3.875 08/05/20	USD	101.748	2.59	2.37	1.24
CHILE 3.625 10/30/2042	USD	98.632	3.73	3.70	15.60
COLOM 11.75 02/25/20	USD	107.691	2.57	2.23	0.81
COLOM 11.85 03/09/28	USD	158.733	3.98	3.91	6.25
COLOM 10.375 01/28/33	USD	153.613	4.98	4.93	8.52
COLOM 7.375 09/18/37	USD	129.792	4.92	4.88	11.09
COLOM 6.125 01/18/41	USD	116.918	4.88	4.84	12.65
MEX 4 10/02/23	USD	102.913	3.33	3.25	4.04
MEX5.55 01/45	USD	108.856	4.955	4.921	14.11

MILA: Sovereign Yield Curves



Source: Bloomberg

Equity

Largest gains	Exchange	Amt.	Price	▲%
PFRCORFICOL	Colomb.	COP	23000.00	3.60
CONCONCRET	Colomb.	COP	457.00	2.93
AZUL AZUL	Santia.	CLP	730.00	2.82
IFS	Lima	USD	47.20	2.63

Per Turnover

	Exchange	Amount (US\$)
BSANTANDER	Santia.	13,014,613
SOM-B	Santia.	12,467,453
PARAUACO	Santia.	8,793,653
ECOPETROL	Colomb.	8,166,474
FALABELLA	Santia.	7,952,199

Largest losses	Exchange	Amt.	Price	▼%
ESVAL-C	Santia.	CLP	0.02	-5.00
TV	Lima	USD	0.30	-4.15
SCCO	Lima	USD	40.47	-3.30
ELCOMEI1	Lima	PEN	1.21	-3.20

Per Volume

	Exchange	Volume
BSANTANDER	Santia.	177,040,071
ESVAL-C	Santia.	26,567,786
CHILE	Santia.	23,188,287
ORO BLANCO	Santia.	19,262,222
VAPORES	Santia.	15,077,362

MILA

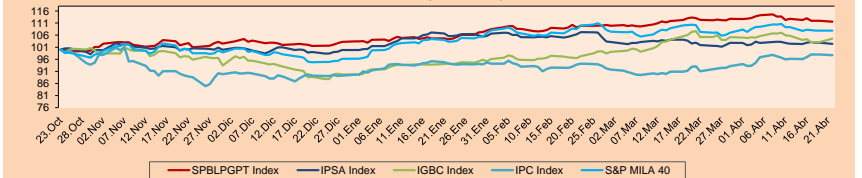
Peru: The General Index of the BVL ended today's session with a negative result of -0.31%. The index maintains a cumulative positive annual trend of + 7.87% in local currency, while the adjusted yield in dollars amounts to + 9.98%. Then, the S & P / BVL Peru SEL advanced + 0.07% while the S & P / BVL LIMA 25 decreased -0.03%. The spot PEN reached S / 3.3040. Highlight: Peruvian currency closes in a minimum of three weeks amid demand for dollars from local banks.

Chile: The IPSA index ended the day with a negative yield of -0.47%. The sectors of the index with the most negative results were Information Technology (-1.83%) and Industrial (-1.81%). On the other hand, the values with the lowest results were Empresas CAP SA (-3.29%) and Sociedad Química y Minera de Chile SA (-2.77%). Highlight: Credicorp estimates weak results for 1t 2019 of Chilean company Sonda.

Colombia: The COLCAP index closed today's session with a positive return of + 1.07%. The sectors of the index that generated the most positive results were Energy (+ 2.13%) and Industrial (+ 1.33%). Finally, the stocks with the best yields were Empresa de Energía de Bogotá SA (+ 3.56%) and Concretos SA (+ 2.93%). Highlight: Colombia's economic activity ended at + 2.7% YoY.

Mexico: The IPC index closed today's session with a negative yield of -0.45%. The sectors of the index that generated the most negative results were Public Services (- 1.62%) and Health (-1.19%). Finally, the stocks with the worst yields were Promotora y Operadora de Infraestructura SAB de CV (-2.43%) and Grupo Televisa SA (-2.36%). Highlight: Andrés López orders the cabinet to ignore an approved educational reform with constitutional changes.

MILA: Stock Indices (6 months)

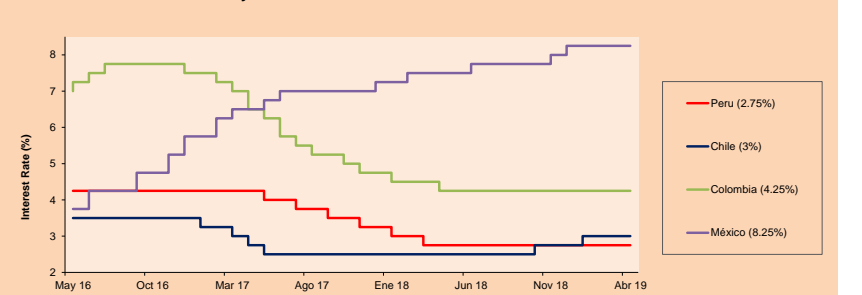


Base: 24/10/18=100 Source: Bloomberg

ETFs

	Curr.	Close	1D	5D	30 D	YTD	Exchange
▼ iShares MSCI All Peru Capped Index Fund	USD	38.32	-0.57%	-1.87%	-2.32%	7.94%	NYSE Arca
▼ iShares MSCI Chile Capped	USD	44.04	-0.90%	-0.52%	3.55%	6.35%	Cboe BZX
- Global X MSCI Colombia	USD	13.71	0.00%	0.44%	0.07%	22.85%	NYSE Arca
▼ iShares MSCI Mexico Capped	USD	47.07	-0.13%	1.73%	8.71%	14.30%	NYSE Arca
▼ iShares MSCI Emerging Markets	USD	44.27	-0.65%	0.32%	4.34%	13.34%	NYSE Arca
▼ Vanguard FTSE Emerging Markets	USD	43.75	-0.59%	0.57%	4.74%	15.05%	NYSE Arca
▼ iShares Core MSCI Emerging Markets	USD	53.32	-0.56%	0.32%	4.36%	13.09%	NYSE Arca
▼ iShares JP Morgan Emerging Markets Bonds	USD	59.7	-0.28%	-0.05%	1.51%	6.88%	Cboe BZX
▼ Morgan Stanley Emerging Markets Domestic	USD	6.62	0.00%	-0.60%	-0.74%	11.71%	New York

MILA: Policy Rate



Source: Bloomberg

Capital Market Laboratory Coodinator: Economist Bruno Bellido Anicam

Collaboration: Pablo Llanos, Jorge Retamozo, Marcia Rojas.

e-mail: pulsobursatil@ulima.edu.pe

facebook: www.facebook.com/pulsobursatil.ul

Phone number : 4376767 Annex: 35340



PULSO BURSÁTIL

WORLD

Main Indices	Close	1 D*	5 D*	1 M*	YTD*	Market Cap. (US\$ Mill.)
▼ Dow Jones (USA)	26,511.05	-0.18%	0.37%	2.41%	13.65%	7,322,802
▲ Standard & Poor's 500 (USA)	2,907.97	0.10%	0.02%	2.66%	16.00%	25,121,814
▲ NASDAQ Composite (USA)	8,015.27	0.22%	0.39%	3.77%	20.80%	12,398,220
▲ Stoxx EUROPE 600 (Europe)	390.46	0.22%	0.92%	1.61%	15.64%	9,346,177
▲ DAX (Germany)	12,222.39	0.57%	2.41%	3.68%	15.75%	1,032,319
▼ FTSE 100 (United Kingdom)	7,459.88	-0.15%	0.57%	1.85%	10.88%	1,549,364
▲ CAC 40 (France)	5,580.38	0.31%	1.73%	2.85%	17.96%	1,505,898
▲ IBEX 35 (Spain)	9,581.90	0.34%	1.45%	0.94%	12.20%	533,596
▲ MSCI AC Asia Pacific Index	163.07	0.03%	0.05%	1.06%	11.15%	18,861,108
▲ HANG SENG (Hong Kong)	29,963.26	-0.54%	0.41%	1.69%	15.33%	2,926,147
▼ SHANGHAI SEC Comp. (China)	3,215.04	-1.70%	1.17%	3.97%	28.92%	5,233,577
▲ NIKKEI 225 (Japan)	22,217.90	0.08%	0.22%	2.73%	11.01%	3,262,789
▲ BOVESPA (Brazil)	94,588.06	0.01%	1.84%	-5.02%	7.62%	713,604
▼ Merval (Argentina)	30,786.64	-3.71%	-2.07%	-11.71%	1.83%	25,424

*Legend: Variation 1D: 1 Day; 5D: 5 Days; 1M: 1 Month; YTD: Var.% 12/31/18 to date

Equity

Alemania (Acciones del DAX Index)

Largest gains	Curr.	Price	▲%	Exchange	Largest losses	Curr.	Price	▼%	Exchange
FRE GY	EUR	Xetra			ADS GY	EUR	Xetra		
BAYN GY	EUR	Xetra			EOAN GY	EUR	Xetra		
DBK GY	EUR	Xetra			RWE GY	EUR	Xetra		
DPW GY	EUR	Xetra			VNA GY	EUR	Xetra		

Europe (Stocks from STOXX EUROPE 600)

Largest gains	Curr.	Price	▲%	Exchange	Largest losses	Curr.	Price	▼%	Exchange
RUI FP	EUR	EN Paris			SWMA SS	SEK	Stockholm		
EBS AV	EUR	Vienna			VER AV	EUR	Vienna		
GALP PL	EUR	EN Lisbon			GVC LN	GBp	Londres		
PNDORA DC	DKK	Copenhagen			GFS LN	GBp	Londres		

Global Overview:

United States:

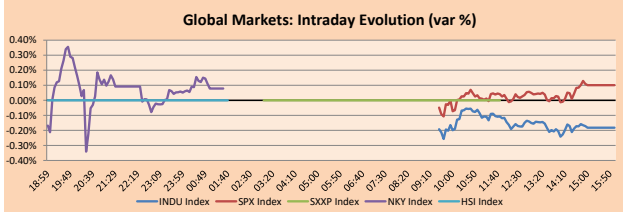
The American market closed the day with mixed results among its main indices, due to the upcoming publication of quarterly corporate results and economic data, recording the highest gains in the energy sector, given the position of investors to remain on the sidelines before quarterly earnings after an extended weekend. The Dow Jones Industrial Average (-0.18%) ended the session lower, unlike the Nasdaq Composite Index (+0.22%), which registered a maximum of six months. In addition, investors are watching for an increase in crude oil prices, given the possible end to exemptions for countries that import Iranian crude, as argued by the United States. In corporate news, CEO Elon Musk pointed out that Tesla Inc.'s robotaxi (-3.85%), without human drivers, will be available in some markets next year thanks to exponential improvements in technology. On the other hand, Boeing Co. shares (-1.29%) shed 1.3% to weigh on the Dow after the New York Times reported over the weekend about lax security concerns linked to the production of the 787 Dreamliner. aircraft manufacturer.

Europe:

The European market did not open on Easter Monday.

Asia:

The Asian market closed the day with mixed results, where the prices of barrels of crude oil increased after it was reported that the United States would stop imposing sanctions on the countries that import the commodity from Iran. Meanwhile, the largest oil producer in the capital of Libya, Tripoli, was hit by a series of air strikes and explosions over the past week. In Japan, the Nikkei 225 (+ 0.08%) closed slightly higher, despite the losses of large companies such as Fast Retailing (+0.09%), Softbank Group (-0.65%), Fanuc (-1.41%), among others. On the other hand, in India, the commercial airline, Jet Airways (-6.16%) reached its lowest price since March 2009, according to Reuters. At the beginning of this month, the company announced that it would pause all its flight operations following the decision of its providers to reject Jet Airways' request for emergency funds. According to Bloomberg analysts, this could potentially cause the bank's broken bank, seeing in its financial statements that the entity currently has, just considering the banking, \$ 1.2 billion as debt. In the Chinese markets, both the Shanghai Composite (-1.70%) and the Shenzhen Composite (-1.86%) closed in the red zone, unlike Hong Kong that did not operate for the Easter Monday holiday.

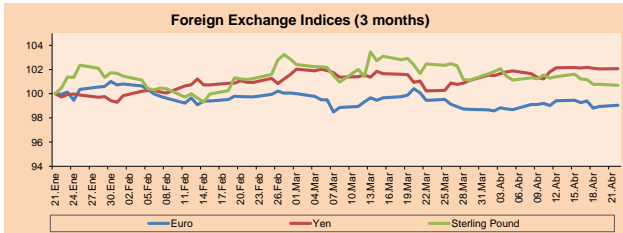


Source: Bloomberg

Currency

Currency	Price	1 D*	5 D*	1 M*	YTD*
▲ Euro	1.1257	0.11%	-0.42%	-0.40%	-1.83%
▲ Yen	111.9400	0.02%	-0.09%	1.84%	2.05%
▼ Sterling Pound	1.2982	-0.08%	-0.90%	-1.72%	1.79%
▼ Yuan	6.7121	0.12%	0.05%	-0.09%	-2.42%
▲ Hong Kong Dollar	7.8443	0.00%	0.06%	-0.04%	0.16%
▲ Brazilian Real	3.3363	0.23%	1.65%	0.76%	1.60%
▲ Argentine Peso	42.2800	0.96%	1.52%	1.12%	12.19%

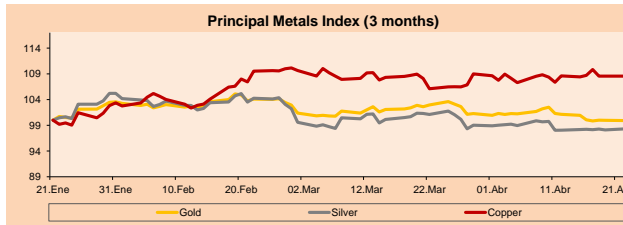
*Legend: Variation 1D: 1 Day; 5D: 5 Days; 1M: 1 Month; YTD: Var.% 12/31/18 to date



Base: 21/01/19=100
Source: Bloomberg

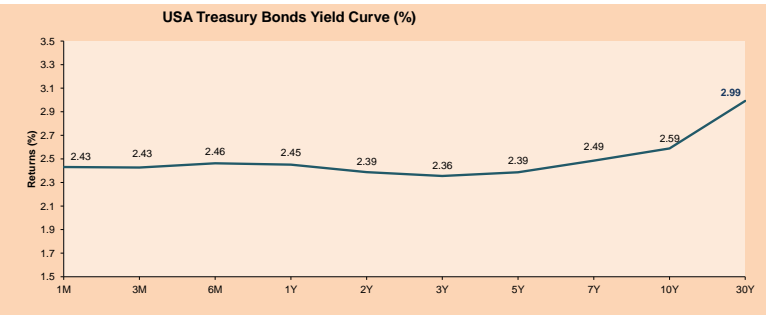
Commodities	Close	1 D*	5 D*	1 M*	YTD*
▼ Oro (US\$ Oz. T) (LME)	1,274.93	-0.04%	-1.01%	-2.95%	-0.59%
▲ Plata (US\$ Oz. T) (LME)	15.01	0.20%	0.12%	-2.78%	-3.13%
▲ Cobre (US\$ TM) (LME)	6,460.75	0.00%	0.14%	2.32%	8.60%
▲ Zinc (US\$ TM) (LME)	2,867.00	0.00%	-3.97%	0.74%	13.84%
▲ Petróleo WTI (US\$ Barril) (NYM)	65.69	2.53%	3.35%	10.79%	39.97%
▲ Estano (US\$ TM) (LME)	20,350.00	0.00%	-1.64%	-5.30%	4.25%
▲ Plomo (US\$ TM) (LME)	1,920.50	0.00%	-0.74%	-4.43%	-4.31%
▲ Molibdeno (US\$ TM) (LME)	1.00	0.00%	0.00%	0.00%	-100.00%
▼ Azúcar #11 (US\$ Libra) (NYB-ICE)	12.77	-1.62%	-0.16%	0.24%	4.33%
▼ Cacao (US\$ TM) (NYB-ICE)	2,342.00	-1.26%	-2.25%	7.93%	-4.80%
▼ Café Arábica (US\$ TM) (NYB-ICE)	92.85	-0.05%	-1.12%	-3.93%	-13.87%

*Lenda: Variación 1D: 1 Día; 5D: 5 Días; 1M: 1 Mes; YTD: Var.% 31/12/17 a la fecha



Base: 21/01/19=100
Source: Bloomberg

ETFs	Curr.	Close	1D	5D	30 D	YTD	Exchange
SPDR S&P 500 ETF TRUST	USD	290.27	0.09%	0.10%	3.95%	16.66%	NYSE Arca
ISHARES MSCI EMERGING MARKET	USD	44.27	-0.65%	0.32%	4.34%	13.34%	NYSE Arca
ISHARES IBOXX HIGH YLD CORP	USD	86.53	-0.17%	-0.43%	1.25%	8.14%	NYSE Arca
FINANCIAL SELECT SECTOR SPDR	USD	27.26	-0.29%	1.08%	7.58%	15.02%	NYSE Arca
VANECK VECTORS GOLD MINERS E	USD	20.88	-1.69%	-5.58%	-7.90%	-0.52%	NYSE Arca
ISHARES RUSSELL 2000 ETF	USD	155.23	-0.28%	-1.23%	3.75%	16.24%	NYSE Arca
SPDR GOLD SHARES	USD	120.37	0.00%	-1.01%	-2.90%	-0.73%	NYSE Arca
ISHARES 20+ YEAR TREASURY BO	USD	122.31	-0.48%	-0.54%	-1.83%	1.32%	NASDAQ GM
INVESCO QQQ TRUST SERIES 1	USD	187.92	0.28%	1.11%	5.24%	22.04%	NASDAQ GM
ISHARES NASDAQ BIOTECHNOLOGY	USD	104.59	0.05%	-5.34%	-3.31%	8.46%	NASDAQ GM
ENERGY SELECT SECTOR SPDR	USD	68.61	2.11%	2.16%	4.80%	20.57%	NYSE Arca
PROSHARES ULTRA VIX ST FLUTUR	USD	31.08	-1.52%	-3.87%	-30.61%	-61.97%	NYSE Arca
UNITED STATES OIL FUND LP	USD	13.67	2.63%	3.25%	11.77%	41.51%	NYSE Arca
ISHARES MSCI BRAZIL ETF	USD	40.49	0.07%	-0.32%	0.15%	5.99%	NYSE Arca
SPDR S&P OIL & GAS EXP & PR	USD	32.98	3.68%	2.81%	9.71%	24.61%	NYSE Arca
UTILITIES SELECT SECTOR SPDR	USD	57.24	-0.09%	-1.65%	-2.14%	8.97%	NYSE Arca
ISHARES US REAL ESTATE ETF	USD	84.80	-0.98%	-3.33%	-1.26%	13.96%	NYSE Arca
SPDR S&P BIOTECH ETF	USD	84.52	-0.13%	-5.14%	-3.80%	17.80%	NYSE Arca
ISHARES IBOXX INVESTMENT GRA	USD	118.39	-0.16%	-0.37%	0.17%	5.90%	NYSE Arca
ISHARES JPM MORGAN USD EMERGI	USD	109.43	-0.07%	-0.09%	0.41%	6.61%	NASDAQ GM
REAL ESTATE SELECT SECT SPDR	USD	35.14	-1.10%	-3.67%	-1.84%	14.00%	NYSE Arca
ISHARES CHINA LARGE-CAP ETF	USD	45.31	-0.92%	0.85%	3.95%	15.94%	NYSE Arca
CONSUMER STAPLES SPDR	USD	56.89	0.04%	0.64%	3.29%	12.65%	NYSE Arca
VANECK VECTORS JUNIOR GOLD M	USD	28.96	-2.06%	-6.37%	-11.52%	-4.17%	NYSE Arca
SPDR BBG BARC HIGH YIELD BND	USD	36.09	-0.14%	-0.25%	1.54%	8.99%	NYSE Arca
VANGUARD REAL ESTATE ETF	USD	84.55	-1.10%	-3.48%	-1.24%	14.19%	NYSE Arca



Source: Bloomberg

Capital Market Laboratory Coordinator: Economist Bruno Ledo Anicama
Collaboration: Pablo Llanos, Jorge Retamozo, Marcia Rojas
e-mail: pulsobursatil@ulima.edu.pe
facebook: www.facebook.com/pulsobursatil.ul
Phone number: 4376767 Annex: 35340

PULSO BURSÁTIL

LIMA

Stocks

Ticker	Currency	Price	1D*	5D*	30D*	YTD*	Frequency	Volume (US\$)	Beta	Dividend Yield (%)	Price Earning	Market Cap. (M US\$)	Economic Sector*	Index Weight
▲ ALICORC1 PE**	S/.	11.05	0.45%	0.00%	-0.90%	11.06%	100.00%	107,721	0.66	2.17	20.77	2,851.25	Industrial	3.53%
▲ ATACOCB1 PE**	S/.	0.30	0.00%	0.00%	-6.54%	-6.83%	88.89%	1,498	0.34	0.00	8.26	85.78	Mining	1.02%
- BACKUSH1 PE**	S/.	22.00	0.00%	0.00%	0.63%	9.00%	44.44%	7,860	0.47	6.13	7.83	8,989.59	Industrial	0.82%
▲ BAP PE**	US\$	232.20	0.20%	-0.41%	-1.16%	7.63%	100.00%	675,132	1.09	2.61	-	18,520.61	Diverse	5.82%
▼ BVN PE**	US\$	15.61	-2.01%	-5.28%	-9.96%	-2.69%	94.44%	50,494	1.22	0.74	-	4,294.83	Mining	5.88%
- CASAGRC1 PE**	S/.	3.93	0.00%	-0.51%	-2.24%	-3.20%	100.00%	1,332	0.53	0.48	140.36	100.18	Agricultural	1.31%
- CONTINC1 PE**	S/.	3.90	0.00%	0.00%	1.75%	2.52%	94.44%	1,416	0.76	3.88	14.56	6,336.26	Finance	2.85%
- CORAREH1 PE**	S/.	0.77	0.00%	0.00%	-1.91%	13.57%	100.00%	135,849	1.13	7.27	3.93	343.26	Industrial	1.72%
- CPACASC1 PE**	S/.	6.52	0.00%	0.77%	-0.91%	1.09%	94.44%	43,831	0.57	0.00	36.22	841.67	Industrial	2.38%
▼ CVERDEC1 PE**	US\$	23.80	-0.50%	-0.30%	1.15%	16.47%	94.44%	108,695	0.80	1.80	69.56	8,331.33	Mining	5.25%
- ENGEPEC1 PE**	S/.	2.23	0.00%	-1.33%	0.81%	16.39%	83.33%	11,106	0.67	5.79	9.67	1,915.75	Public Services	1.44%
- ENDISPC1**	S/.	5.45	0.00%	0.00%	2.00%	5.27%	61.11%	25,333	0.77	3.95	10.13	1,053.19	Public Services	0.98%
▼ FERREYC1 PE**	S/.	2.39	-0.63%	-0.83%	1.40%	-0.99%	100.00%	100,109	0.93	5.21	10.39	705.69	Diverse	4.90%
▲ GRAMONC1 PE**	S/.	2.24	1.82%	1.82%	5.66%	12.56%	94.44%	38,743	0.47	0.00	-	447.44	Diverse	4.05%
▲ IFS PE**	US\$	47.20	2.63%	2.61%	1.83%	12.38%	88.89%	2,747,751	0.59	2.97	15.74	5,338.83	Diverse	7.22%
▲ INRETC1 PE**	US\$	36.80	0.82%	2.22%	2.22%	30.04%	100.00%	3,680	1.00	0.00	60.14	3,783.31	Diverse	5.28%
- LUSURC1 PE**	S/.	11.90	0.00%	0.17%	-1.80%	9.77%	100.00%	9,864	0.48	6.22	10.75	1,753.64	Public Services	1.81%
- MINSUR1 PE**	S/.	1.75	0.00%	-2.23%	-0.57%	32.58%	77.78%	251	1.39	0.00	-	1,526.83	Mining	3.09%
- PML PE**	US\$	0.16	0.00%	0.00%	-3.13%	-11.43%	66.67%	7,398	1.51	0.00	-	40.89	Mining	2.12%
- RELAPAC1 PE**	S/.	0.16	0.00%	-2.52%	-7.19%	23.02%	100.00%	29,742	0.33	0.00	-	165.81	Industrial	2.12%
▼ SCCO PE**	US\$	40.47	-3.30%	-0.30%	7.06%	35.71%	100.00%	96,549	4.80	4.80	20.24	31,285.11	Mining	2.14%
▲ SIDERC1 PE**	S/.	0.91	1.11%	7.06%	29.45%	72.02%	100.00%	28,864	1.38	3.70	8.46	338.16	Industrial	1.43%
▼ TV PE**	US\$	0.30	-4.15%	-8.26%	3.45%	1.01%	94.44%	21,345	1.83	0.00	-	245.49	Mining	2.93%
- UNACEMC1 PE**	S/.	2.63	0.00%	0.00%	-4.36%	1.66%	55.56%	119,042	0.78	0.00	16.35	1,310.47	Industrial	3.00%
- VOLCABC1 PE**	S/.	0.58	0.00%	-3.33%	-12.12%	-18.31%	100.00%	52,629	1.02	2.35	23.07	715.53	Mining	5.90%

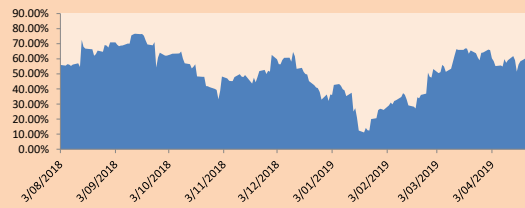
Quantity of shares: 25
Source: Bloomberg, Económica
* Bloomberg Industry Classification System
** PER is used in the stock market and original currency of the instrument
*Legend: Variation 1D: 1 Day; 5D: 5 Days, 1M: 1 Month; YTD: Var.% 12/31/18 to date

Sectorial Indices

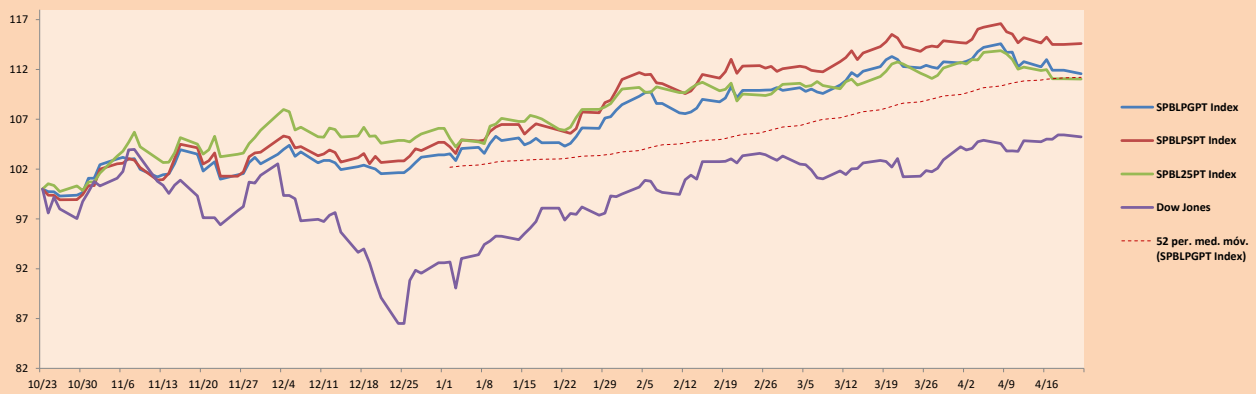
	Close	1D*	5D*	30D*	YTD*	Beta
▼ Mining Index	309.51	-1.96%	-2.41%	-2.11%	8.66%	1.58
▲ Consumer Index	1,171.24	0.66%	1.00%	0.79%	16.47%	0.36
▲ Industrial Index	235.70	0.09%	0.28%	0.64%	3.88%	0.67
▲ Banking and Financial Index	1,266.97	0.64%	0.06%	-0.56%	5.58%	1.24
▲ Construction Index	261.87	0.55%	0.89%	0.44%	6.50%	0.61
▲ Services Index	440.78	0.57%	0.27%	0.56%	10.86%	0.09
▲ Juniors Index	23.53	0.34%	-1.79%	-9.78%	-20.07%	0.71
▲ Electric Index	430.31	0.57%	0.27%	0.56%	10.86%	0.09

*Legend: Variation 1D: 1 Day; 5D: 5 Days, 1M: 1 Month; YTD: Var.% 12/31/18 to date

Correlation Graph of Returns of Mining Index against Metallic Index of London (3 months)



Indices (6 months)



Source: Bloomberg

Capital Market Laboratory Coordinator: Economist Bruno Bellido Anicama
Collaboration: Pablo Llanos, Jorge Retamozo, Marcia Rojas
e-mail: pulsobursatil@ulima.edu.pe
facebook: www.facebook.com/pulsobursatil.ul
Phone number : 4376767 Annex: 35340

The content of this document is just for informational purposes. The information and opinions expressed should not be considered as recommendations for future decisions. Under any circumstances, the Capital Market Laboratory of University of Lima will be responsible for the use of the statements in this document.

PULSO BURSÁTIL

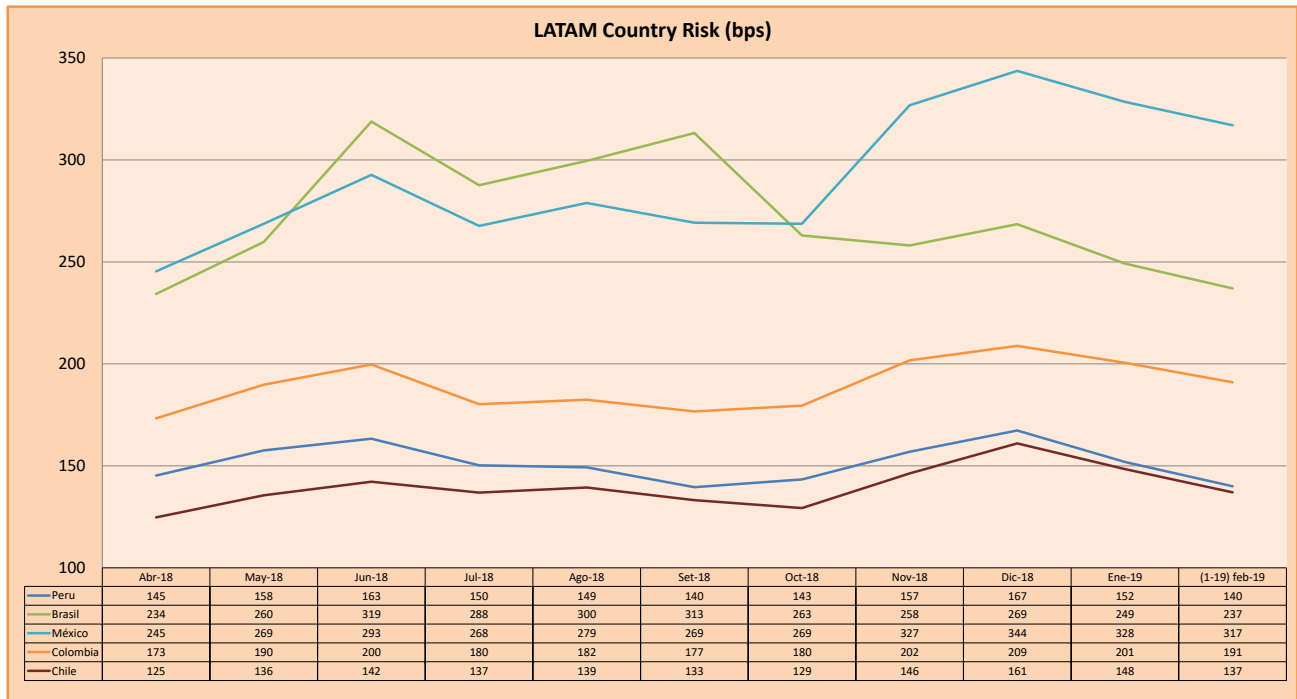
SOVEREIGN RATING

RISK RATINGS			
Moody's	S&P	Fitch	
Aaa	AAA	AAA	Prime
Aa1	AA+	AA+	High credit quality
Aa2	AA	AA	
Aa3	AA-	AA-	
A1	A+	A+	Medium-high grade, with low credit risk
A2	A	A	
A3	A-	A-	
Baa1	BBB+	BBB+	Moderate Credit Risk
Baa2	BBB	BBB	
Baa3	BBB-	BBB-	
Ba1	BB+	BB+	It has speculative elements and it is subject to substantial credit risk
Ba2	BB	BB	
Ba3	BB-	BB-	
B1	B+	B+	It is considered speculative and it has high credit risk
B2	B	B	
B3	B-	B-	
Caa1	CCC+	CCC	Bad credit conditions and it is subject to high credit risk
Caa2	CCC		
Caa3	CCC-		
Ca	CC	DDD	Very close to default or in default
	C		
C	D		

Source: Bloomberg

Latin America Credit Rating			
Clasificadora de riesgo			
Country	Moody's	Fitch	S&P
Peru	A3	BBB+	BBB+
Mexico	A3	BBB+	BBB+
Venezuela	C	C	SD
Brazil	Ba2	BB-	BB-
Colombia	Baa2	BBB	BBB-
Chile	A1	A	A+
Argentina	B2	B	B
Panama	Baa1	BBB	BBB

Source: Bloomberg



Source: BCRP

Capital Market Laboratory Coordinator: Economist Bruno Bellido Anicama
Collaboration: Pablo Llanos, Jorge Retamozo, Marcia Rojas
e-mail: pulsobursatil@ulima.edu.pe
facebook: www.facebook.com/pulsobursatil.ul
Phone number : 4376767 Annex: 35340

The content of this document is just for informational purposes. The information and opinions expressed should not be consider as recommendations for future decisions. Under any circumstances, the Capital Market Laboratory of University of Lima will be responsible for the use of the statements in this document.