

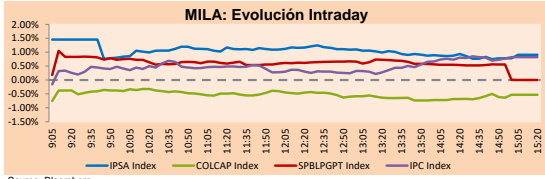
PULSO BURSÁTIL

Lima, May 28, 2019

MILA

Main Indices	Close	1 D	5 D	1 M	YTD	Market Cap. (US\$ bill)
▼ IPSA (Chile)	4,798.35	-1.07%	-2.36%	-7.58%	-6.01%	144.22
▼ IGPA (Chile)	24,602.78	-0.88%	-2.08%	-6.58%	-5.19%	186.56
▼ IGBC (Colombia)	11,878.01	-1.45%	-2.83%	-8.08%	6.59%	94.47
▼ COLCAP (Colombia)	1,463.38	-1.12%	-2.01%	-8.41%	10.37%	95.89
▼ S&P/BVL (Perú)*	19,639.09	-0.15%	-2.17%	-5.79%	1.49%	102.27
▲ S&P/BVL SEL (Perú)	522.27	-0.33%	-2.48%	-6.74%	1.94%	75.52
▲ S&P/BVL LIMA 25	25,283.84	0.12%	-1.90%	-7.70%	-4.62%	83.69
▲ IPC (México)	42,207.71	-0.67%	-2.27%	-6.15%	1.36%	274.53
▼ S&P MILA 40	599.53	-0.63%	-1.65%	-10.15%	-1.50%	255.08

* Market Cap. Of the last price Legend: Variation 1D: 1 day; 5D: 5 days; 1M: 1 Month; YTD: Var%12/31/18 to date

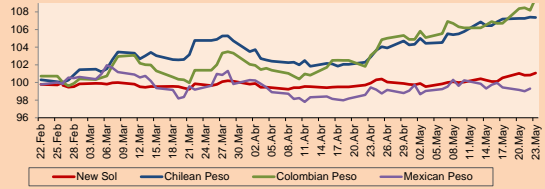


Source: Bloomberg

Currency	Price	1D*	5D*	30 D*	YTD*
▲ New Sol (PEN)	3,353.9	0.05%	0.38%	1.16%	-100.57%
▲ Chilean Peso (CLP)	707.18	1.23%	1.57%	4.84%	-99.53%
▲ Colombian Peso (COP)	3,379.55	0.62%	1.05%	4.37%	-96.05%
▲ Mexican Peso (MXN)	19.19	0.70%	0.95%	1.35%	-103.09%

*Legend: Variation 1D: 1 day; 5D: 5 days; 1M: 1 Month; YTD: Var%12/31/18 to date

MILA: Foreign Exchange Indices (3 months)

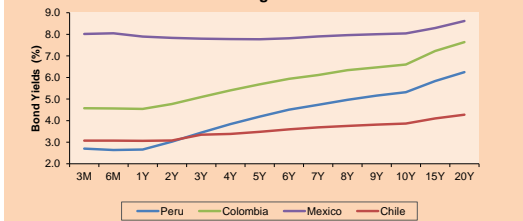


Base: 26/02/19=100 Source: Bloomberg

Fixed Income

Instrument	Currency	Price	Bid Yield (%)	Ask Yield (%)	Duration
PERU 4.125 08/25/2027	USD	108.9	2.91	2.89	6.98
PERU 7.35 07/21/25	USD	125.175	2.87	2.83	5.01
PERU 8.75 11/21/33	USD	156.139	3.71	3.70	9.57
PERU 6.55 03/14/37	USD	136.075	3.82	3.81	11.13
PERU 5.625 11/18/2050	USD	129.321	3.98	3.98	16.83
CHILE 2.25 10/30/22	USD	99.508	2.44	2.37	3.26
CHILE 3.875 08/05/20	USD	101.988	2.27	2.05	1.15
CHILE 3.625 10/30/2042	USD	100.162	3.62	3.61	15.86
COLOM 11.75 02/25/20	USD	106.694	2.66	2.35	0.71
COLOM 11.85 03/09/28	USD	158.755	3.92	3.85	6.15
COLOM 10.375 01/28/33	USD	154.951	4.89	4.78	8.44
COLOM 7.375 09/18/37	USD	130.145	4.89	4.85	11.01
COLOM 6.125 01/18/41	USD	117.271	4.84	4.81	12.56
MEX 4 10/02/23	USD	103.25	3.23	3.15	3.95
MEX5.55 01/45	USD	110.532	4.839	4.819	14.1

MILA: Sovereign Yield Curves



Source: Bloomberg

Equity

Largest gains	Exchange	Amt.	Price	▲%
COUNTRY-A	#N/A Field	CLP	110000.00	10.00
CPACASC1	Lima	PEN	5.90	5.73
FORUS	Santia.	CLP	1804.80	3.13
ELCONDOR	Colomb.	COP	1275.00	2.41

Per Turnover

Exchange	Amount (US\$)
FALABELLA	Santia. 75,553,310
CHILE	Santia. 50,583,882
CMPC	Santia. 50,064,100
SQM-B	Santia. 42,095,266
ISA	Colomb. 39,175,482

Largest losses

Exchange	Amt.	Price	▼%	
C	Lima	USD	63.90	-10.32
BBV	Lima	USD	5.50	-8.79
DNT	Lima	USD	0.04	-7.50
BCI	Santia.	CLP	42000.00	-4.87

Per Volume

Exchange	Volume
CHILE	Santia. 360,973,290
BSANTANDER	Santia. 348,606,325
VAPORES	Santia. 74,175,593
AGUAS-A	Santia. 59,028,296

MILA

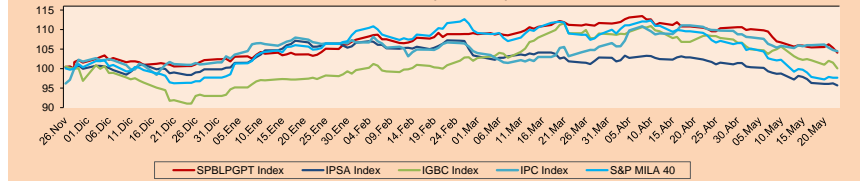
Peru: The General Index of the BVL ended today's session with a negative result of -0.15%. The index maintains a positive cumulative annual trend of +1.49% in local currency, while the adjusted yield in dollars amounts to +2.07%. Then, the S&P/BVL Peru SEL fell by 0.33% while the S&P/BVL LIMA 25 rose by 0.12%. The spot PEN reached 5/3.5539. Headline: PEN-USD Exchange close at its highest level in four months.

Chile: The IPSA index ended the day today with a negative yield of -1.07%. The sectors of the index that generated the most negative results were Consumer Discretionary (-2.46%) and Financials (-1.73%). Finally, the stocks with the worst yields were Banco de Credito e Inversiones (-4.87%) and Inversiones La Construcción SA (-3.49%). Headline: Dollar jumps to 707 CLP and makes the CLP the emerging currency with the worst yield in May.

Colombia: The COLCAP index closed today's session with a negative yield of -1.12%. The sectors of the index that generated the most negative results were Industrials (-6.53%) and Energy (-4.51%). Finally, the stocks with the worst yields were Avianca Holdings SA (-7.80%) and Ecopetrol SA (-4.58%). Headline: Dollar gains some steam this Tuesday against COP.

Mexico: The IPC index closed today's session with a negative return of -0.67%. The sectors of the index that generated the most negative results were Materials (-2.02%) and Products Needed (-1.02%). Finally, the stocks with the worst yields were Cemex SAB de CV (-3.41%) and Kimberly-Clark de Mexico SAB de CV (-3.18%). Headline: Dollar rise to 19.50 MXN spot at banks.

MILA: Stock Indices (6 months)

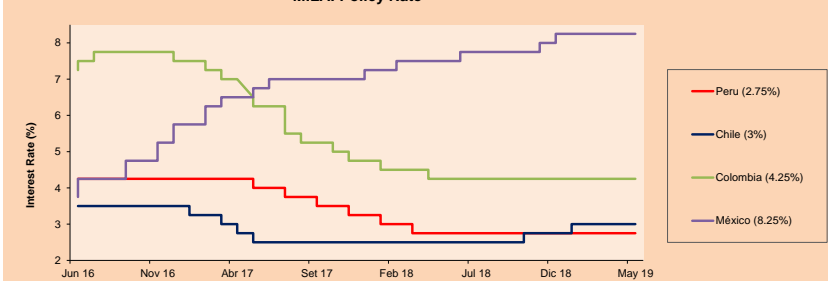


Base: 28/11/18=100 Source: Bloomberg

ETFs

	Curr.	Close	1D	5D	30 D	YTD	Exchange
▼ iShares MSCI All Peru Capped Index Fund	USD	34.72	-0.63%	-3.15%	-8.63%	-101.52%	NYSE Arca
▼ iShares MSCI Chile Capped	USD	38.06	-2.26%	-3.84%	-11.49%	-105.93%	Cboe BZX
▼ Global X MSCI Colombia	USD	11.97	-1.48%	-2.34%	-10.83%	-92.70%	NYSE Arca
▼ iShares MSCI Mexico Capped	USD	43.3	-1.14%	-2.87%	-6.92%	-93.19%	NYSE Arca
▲ iShares MSCI Emerging Markets	USD	40.09	0.35%	-1.33%	-8.64%	-97.82%	NYSE Arca
▲ Vanguard FTSE Emerging Markets	USD	39.97	0.30%	-1.24%	-8.03%	-95.35%	NYSE Arca
▲ iShares Core MSCI Emerging Markets	USD	48.31	0.25%	-1.45%	-8.54%	-98.01%	NYSE Arca
▲ iShares JP Morgan Emerging Markets Bonds	USD	56.19	0.23%	-0.64%	-5.94%	-99.80%	Cboe BZX
▲ Morgan Stanley Emerging Markets Domestic	USD	6.54	0.31%	0.46%	-0.30%	-90.34%	New York

MILA: Policy Rate



Source: Bloomberg

Capital Market Laboratory Coordinator: Economist Bruno Bellido Anicam
Collaboration: Juan Carlos Figueroa, Pablo Llanos, Jorge Retamozo and Marcia Rojas.
e-mail: pulsoBursatil@ulima.edu.pe
facebook: www.facebook.com/pulsoBursatil.ul
Phone number : 4376767 Annex: 35340

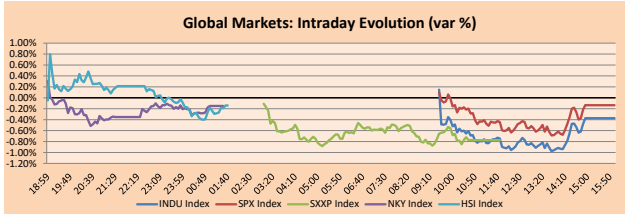


PULSO BURSÁTIL

WORLD

Main Indices	Close	1 D*	5 D*	1 M*	YTD*	Market Cap. (US\$ Mill.)
▼ Dow Jones (USA)	25,347.77	-0.93%	-1.29%	-4.50%	8.66%	7,062,845
▼ Standard & Poor's 500 (USA)	2,802.39	-0.84%	-1.33%	-4.68%	11.79%	24,381,167
▼ NASDAQ Composite (USA)	7,607.35	-0.39%	-1.23%	-6.47%	14.65%	11,807,855
▼ Stoxx EUROPE 600 (Europe)	375.90	-0.22%	-0.95%	-3.86%	11.33%	9,053,528
▼ DAX (Germany)	12,027.05	-0.37%	-0.99%	-2.34%	13.90%	1,000,136
▼ FTSE 100 (United Kingdom)	7,268.95	-0.12%	-0.57%	-2.14%	8.04%	1,540,895
▼ CAC 40 (France)	5,312.69	-0.44%	-1.35%	-4.61%	12.30%	1,456,143
▼ IBEX 35 (Spain)	9,191.80	-0.27%	-0.51%	-3.31%	7.63%	512,632
▲ MSCI AC Asia Pacific Index	153.77	0.12%	-0.30%	-5.39%	4.56%	17,417,856
▲ HANG SENG (Hong Kong)	27,390.81	0.28%	-0.96%	-8.37%	5.95%	2,566,802
▲ SHANGHAI SEC Comp. (China)	2,909.91	0.61%	0.14%	-4.38%	16.83%	4,608,606
▲ NIKKEI 225 (Japan)	21,260.14	0.37%	-0.05%	-4.49%	6.22%	3,220,384
▲ BOVESPA (Brazil)	96,392.76	1.61%	2.02%	0.16%	9.68%	705,403
▲ Merval (Argentina)	34,643.54	-2.27%	0.47%	15.47%	14.36%	26,069

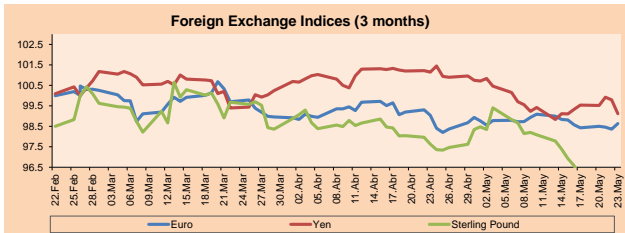
*Legend: Variation 1D: 1 Day; 5D: 5 Days; 1M: 1 Month; YTD: Var.% 12/31/18 to date



Source: Bloomberg

Currency	Price	1 D*	5 D*	1 M*	YTD*
▼ Euro	1.1160	-0.30%	-0.01%	0.08%	-102.44%
▼ Yen	109.3800	-0.12%	-1.01%	-1.97%	-100.07%
▼ Sterling Pound	1.2653	-0.21%	-0.42%	-2.04%	-100.76%
▲ Yuan	6.9102	0.18%	0.12%	2.70%	-99.53%
▼ Hong Kong Dollar	7.8491	0.00%	-0.01%	0.06%	-99.78%
▼ Brazilian Real	4.0253	-0.42%	-0.34%	2.39%	-95.66%
▼ Argentine Peso	44.6805	-0.31%	-0.27%	-2.66%	-80.25%

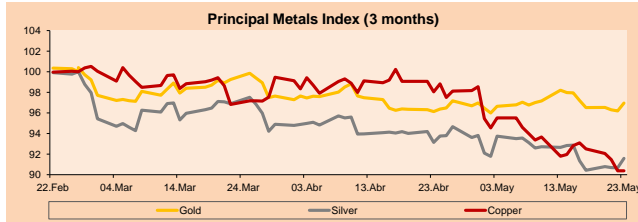
*Legend: Variation 1D: 1 Day; 5D: 5 Days; 1M: 1 Month; YTD: Var.% 12/31/18 to date



Base: 26/02/19=100
Source: Bloomberg

Commodities	Close	1 D*	5 D*	1 M*	YTD*
▼ Oro (US\$ Oz. T) (LME)	1,279.35	-0.74%	0.37%	-0.54%	-69.92%
▼ Plata (US\$ Oz. T) (LME)	14.36	-1.67%	-0.66%	-4.94%	-105.78%
▼ Cobres (US\$ TM) (LME)	5,932.00	0.00%	-0.55%	-7.29%	-100.92%
▼ Zinc (US\$ TM) (LME)	2,721.00	0.00%	-0.13%	-5.77%	-93.51%
▲ Petróleo WTI (US\$ Barril) (NYM)	59.14	0.87%	-6.32%	-6.69%	-76.89%
▼ Estano (US\$ TM) (LME)	19,590.00	0.00%	-0.68%	-2.22%	-99.49%
▼ Plomo (US\$ TM) (LME)	1,815.25	0.00%	1.18%	-6.38%	-111.04%
▲ Azúcar #11 (US\$ Libra) (NYB-ICE)	11.75	0.77%	-0.51%	-7.11%	-105.45%
▲ Cacao (US\$ TM) (NYB-ICE)	2,450.00	-0.69%	0.16%	4.93%	-101.38%
▲ Café Arabica (US\$ TM) (NYB-ICE)	96.05	2.95%	3.39%	2.07%	-113.25%

*Lenda: Variación 1D: 1 Día; 5D: 5 Days; 1M: 1 Mes; YTD: Var.% 31/12/17 a la fecha



Base: 26/02/19=100
Source: Bloomberg

Equity

Alemania (Acciones del DAX Index)

Largest gains	Curr.	Price	▲%	Exchange	Largest losses	Curr.	Price	▼%	Exchange
CON GY	EUR	126.4	1.18	Xetra	DBK GY	EUR	6.305	-2.20	Xetra
ADS GY	EUR	264.05	0.84	Xetra	BAS GY	EUR	59.89	-1.80	Xetra
WDI GY	EUR	160.9	0.75	Xetra	DPW GY	EUR	26.615	-1.61	Xetra
FME GY	EUR	67.32	0.72	Xetra	VNA GY	EUR	47.12	-1.57	Xetra

Europe (Stocks from STOXX EUROPE 600)

Largest gains	Curr.	Price	▲%	Exchange	Largest losses	Curr.	Price	▼%	Exchange
UG FP	EUR	20.84	4.62	EN Paris	COB LN	GBP	104.3	-5.14	Londres
SIM DC	DKK	672	4.35	Copenhagen	OZD GY	EUR	2.483	-4.09	Xetra
BME LN	GBP	362	4.17	Londres	LPP PW	PLN	7150	-3.31	Warsaw
CTEC LN	GBP	146.85	3.81	Londres	BATS LN	GBP	2886.5	-3.28	Londres

Global Overview:

United States:

The US market closed down. In his visit to Japan, President Donald Trump mentioned that the US is not prepared to make a trade agreement with China. He also mentioned that US tariffs on Chinese products could rise substantially. However, he added: "I think that at some point in the future, China and the United States will have a very large trade agreement, (...) because I do not believe that China can continue to pay these, in reality, hundreds of billions of dollars in tariffs." In other news, as reported by the Conference Board, consumer confidence increased in May, as households showed greater optimism in relation to the labor market and despite the tensions of the 10-month trade war. The consumer attitudes index rose 4.9 points, being 134.1 this month. However, the so-called "hard economic data" weakened in recent months, in which industrial production, orders for durable goods, retail sales and housing fell in April, suggesting that the economy lost momentum important at the beginning of 2Q. Finally, yields on 10-year bonds were at their lowest level since October 2017, 9 basis points below the 3 Month Treasury Bill, which generates more concern as a recession signal has strengthened.

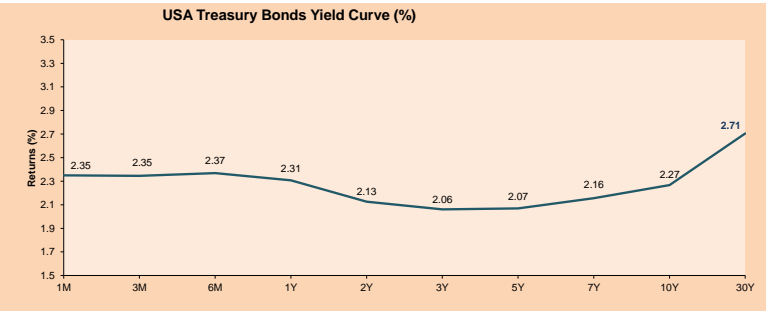
Europe:

The European market closed with negative results, despite the fact that the European Parliament is demonstrating a reasonably good performance for the Brexit case. Among the main indexes in the region, the CAC 40 (-0.44%) French and the FTSE MIB (-0.50%) Italian suffered the biggest falls, after a report reported that Brussels is currently considering a disciplinary action against the parliament of Rome in solving its public debt crisis. Meanwhile, investors in Europe were attentive to the results of the European congress elections. The results showed a strong inclination towards the liberal party and "Green". In addition, right-wing popular parties advanced in both English and French territory, having as leaders Nigel Farage of the Brexit party and Marine Le Pen of the nationalist party, respectively. Among the main sectors, the automaker had an important advance of 1.5% during the date. The price of the shares of Renault (+12.00%) and Fiat (+8.13%) were increased by the report that this latest car brand released on a possible merger with its French rival. At a press conference, Fiat said the new organization could produce an estimated 8.7 million vehicles a year, and would be considered the third largest carmaker in the world.

Asia:

The Asian market culminated the day upwards in the absence of important news about the market in the trade negotiations during the visit of President Donald Trump to Japan. Regarding this, after the president of the United States held yesterday in front of journalists who expected the two countries to "announce some things, probably in August, which will be very good for both countries" in terms of trade, Japanese Finance Minister Toshimitsu Motegi said that Trump's comment probably reflected his hope for rapid progress in negotiations. On the other hand, the Hong Kong stock market managed to recover from its four-month lows in the previous session, but with limited gains due to the sentiment of investors that remains fragile amid widespread uncertainty about trade and growth economy. In corporate news, Alibaba is considering raising up to 20 billion dollars through a list in Hong Kong, as expressed by people familiar with the matter to Reuters, along with a second deal after its record \$25 billion in New York in 2014. Also, Baoshang Bank of China, based in Inner Mongolia, plans to resume the issuance of negotiable certificates of deposit (NCD) on Wednesday, as argued by operators with direct knowledge of the matter.

	Curr.	Close	1D	5D	30 D	YTD	Exchange
SPDR S&P 500 ETF TRUST	USD	280.15	-0.93%	-2.22%	-4.52%	-86.60%	NYSE Arca
ISHARES MSCI EMERGING MARKET	USD	40.09	0.35%	-1.33%	-8.64%	-97.82%	NYSE Arca
ISHARES IBOXX HIGH YLD CORP	USD	85.57	-0.09%	-0.85%	-1.19%	-92.35%	NYSE Arca
FINANCIAL SELECT SECTOR SPDR	USD	26.55	-1.15%	-2.35%	-4.15%	-87.49%	NYSE Arca
VANECK VECTORS GOLD MINERS E	USD	20.42	-0.73%	-1.40%	-4.13%	-103.08%	NYSE Arca
ISHARES RUSSELL 2000 ETF	USD	149.69	-0.80%	-2.75%	-5.48%	-98.12%	NYSE Arca
SPDR GOLD SHARES	USD	120.83	-0.39%	0.39%	-0.44%	-100.07%	NYSE Arca
ISHARES 20+ YEAR TREASURY BO	USD	128.79	0.79%	2.60%	4.24%	-94.01%	NASDAQ GM
INVECO QQQ TRUST SERIES 1	USD	177.49	-0.38%	-2.39%	-6.90%	-84.22%	NASDAQ GM
ISHARES NASDAQ BIOTECHNOLOGY	USD	102.90	-1.25%	-1.39%	-4.19%	-92.38%	NASDAQ GM
ENERGY SELECT SECTOR SPDR	USD	60.98	-1.04%	-5.49%	-7.91%	-92.11%	NYSE Arca
PROSHARES ULTRA VIX ST FUTUR	USD	37.82	4.38%	9.27%	21.69%	-153.53%	NYSE Arca
UNITED STATES OIL FUND LP	USD	12.23	0.00%	-6.85%	-6.57%	-74.32%	NYSE Arca
ISHARES MSCI BRAZIL ETF	USD	40.28	2.70%	2.60%	-2.35%	-97.67%	NYSE Arca
SPDR S&P OIL & GAS EXP & PR	USD	26.71	-1.51%	-10.58%	-14.61%	-97.60%	NYSE Arca
UTILITIES SELECT SECTOR SPDR	USD	58.85	-1.64%	-0.20%	1.29%	-85.90%	NYSE Arca
ISHARES US REAL ESTATE ETF	USD	87.20	-1.06%	-0.24%	0.40%	-81.91%	NYSE Arca
SPDR S&P BIOTECH ETF	USD	82.03	-1.06%	-1.49%	-5.97%	-85.90%	NYSE Arca
ISHARES IBOXX INVESTMENT GRA	USD	119.81	0.07%	0.82%	0.44%	-92.80%	NYSE Arca
ISHARES JPI MORGAN USD EMERGI	USD	109.62	0.13%	0.04%	0.49%	-93.00%	NASDAQ GM
REAL ESTATE SELECT SECT SPDR	USD	36.37	-1.03%	0.06%	1.06%	-80.84%	NYSE Arca
ISHARES CHINA LARGE-CAP ETF	USD	40.13	-0.50%	-1.76%	-10.02%	-97.34%	NYSE Arca
CONSUMER STAPLES SPDR	USD	56.58	-1.63%	-1.58%	-0.70%	-85.66%	NYSE Arca
VANECK VECTORS JUNIOR GOLD M	USD	28.01	-0.64%	-1.93%	-7.01%	-107.13%	NYSE Arca
SPDR BBG BARC HIGH YIELD BND	USD	107.02	-0.04%	-0.54%	-1.13%	-91.57%	NYSE Arca
VANGUARD REAL ESTATE ETF	USD	87.19	-0.99%	-0.16%	0.45%	-81.39%	NYSE Arca



Source: Bloomberg

Capital Market Laboratory Coordinator: Economist Bruno Bellido Anicama
Collaboration: Juan Carlos Figueroa, Pablo Llanos, Jorge Retamozo and Marcia Rojas
e-mail: pulsoburstil@ulima.edu.pe
facebook: www.facebook.com/pulsoburstilulima
Phone number: 4376767 Anexas: 35340

PULSO BURSÁTIL

LIMA

Stocks

Ticker	Currency	Price	1D*	5D*	30D*	YTD*	Frequency	Volume (US\$)	Beta	Dividend Yield (%)	Price Earning	Market Cap. (M US\$)	Economic Sector*	Index Weight
▲ ALICORC1 PE**	S/.	10.55	0.48%	0.00%	-1.40%	-92.58%	94.74%	1,736,898	0.69	2.27	20.37	2,682.10	Industrial	3.53%
▲ ATACOCB1 PE**	S/.	0.22	0.00%	-1.36%	-23.86%	-113.80%	73.68%	1,794	0.46	0.00	5.89	61.13	Mining	1.02%
- BACKUSH1 PE**	S/.	23.00	0.00%	0.00%	9.00%	-85.96%	73.68%	6,858	0.39	0.00	7.50	9,164.09	Industrial	0.82%
▼ BAP PE**	US\$	219.65	-0.61%	-1.64%	-6.93%	-96.49%	100.00%	1,647,772	1.08	2.75	-	17,519.61	Diverse	5.82%
▼ BVN PE**	US\$	14.49	-0.07%	-5.42%	-8.75%	-110.59%	100.00%	5,679,972	1.46	0.79	-	3,986.88	Mining	5.88%
▼ CASAGRC1 PE**	S/.	3.37	-0.30%	-0.88%	-14.03%	-116.18%	100.00%	1,507	0.57	0.56	11.92	84.64	Agricultural	1.31%
- CONTINC1 PE**	S/.	3.66	0.00%	-0.81%	-6.15%	-103.23%	100.00%	24,466	0.67	4.13	13.71	5,858.58	Finance	2.85%
▲ CORAREH1 PE**	S/.	0.69	1.47%	-1.43%	-9.21%	-99.70%	100.00%	6,638	0.96	8.11	3.69	322.17	Industrial	1.72%
▲ CPACASC1 PE**	S/.	5.90	5.73%	4.42%	-8.53%	-115.11%	100.00%	921,274	0.54	6.39	32.78	750.95	Industrial	2.38%
- CVERDEC1 PE**	US\$	20.00	0.00%	-5.21%	-13.42%	-99.68%	89.47%	201,223	1.13	0.00	38.54	7,001.12	Mining	5.25%
- ENDEPEC1 PE**	S/.	2.31	0.00%	0.43%	4.95%	-75.41%	78.95%	2,564	0.64	4.60	10.28	1,955.19	Public Services	1.44%
- ENDISPC1**	S/.	5.42	0.00%	0.00%	-0.06%	-94.75%	57.89%	1,503	0.71	0.00	9.38	1,031.94	Public Services	0.98%
▲ FERREYC1 PE**	S/.	2.26	2.26%	-3.42%	-5.44%	-105.42%	100.00%	546,344	0.70	5.51	8.76	657.46	Diverse	4.90%
▼ GRAMONC1 PE**	S/.	1.95	0.00%	0.00%	-11.36%	-101.99%	84.21%	190,671	0.85	0.00	-	424.10	Diverse	4.05%
▼ IFS PE**	US\$	44.20	-4.74%	-4.74%	-2.75%	-85.22%	94.74%	1,123,028	0.64	3.96	14.18	4,999.50	Diverse	7.22%
▼ INRETC1 PE**	US\$	36.50	-0.27%	-2.67%	-3.60%	-67.81%	100.00%	1,748,379	1.00	0.93	38.75	3,752.47	Diverse	5.28%
▲ LUSURC1 PE**	S/.	12.30	1.91%	1.91%	2.50%	-88.56%	84.21%	340,832	0.43	6.02	10.31	1,785.83	Public Services	1.81%
- MINSUR1 PE**	S/.	1.64	0.00%	-5.20%	-3.53%	-67.29%	94.74%	20,803	1.39	4.62	-	1,409.74	Mining	3.09%
- PML PE**	US\$	0.13	0.00%	-13.42%	-16.77%	-108.59%	31.58%	15,448	1.58	0.00	-	34.04	Mining	2.12%
▼ RELAPAC1 PE**	S/.	0.12	-0.81%	-4.69%	-21.29%	-102.52%	100.00%	6,461	0.51	0.00	-	302.61	Industrial	2.12%
- SCCO PE**	US\$	33.61	0.00%	-2.66%	-10.74%	-87.65%	89.47%	78,183	0.00	0.00	17.78	25,982.02	Mining	2.14%
▼ SIDERC1 PE**	S/.	0.68	-4.49%	-6.85%	-18.07%	8.33%	100.00%	80,197	1.40	15.01	0.09	248.96	Industrial	1.43%
▼ TV PE**	US\$	0.23	-0.44%	-8.54%	-15.09%	-111.82%	100.00%	16,186	1.87	0.00	-	183.96	Mining	2.93%
▼ UNACEMC1 PE**	S/.	2.40	-2.04%	-4.00%	-1.52%	-103.22%	78.95%	19,571	1.09	2.17	12.85	1,301.02	Industrial	3.00%
▼ VOLCABC1 PE**	S/.	0.47	-1.06%	4.49%	-15.45%	-122.14%	100.00%	3,332,586	0.99	2.94	34.33	2,043.30	Mining	5.90%

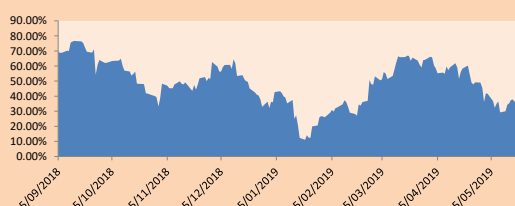
Quantity of shares: 25
 Source: Bloomberg, Económica
 * Bloomberg Industry Classification System
 ** PER is used in the stock market and original currency of the instrument
 *Legend: Variation 1D: 1 Day; 5D: 5 Days, 1M: 1 Month; YTD: Var.% 12/31/18 to date

Sectorial Indices

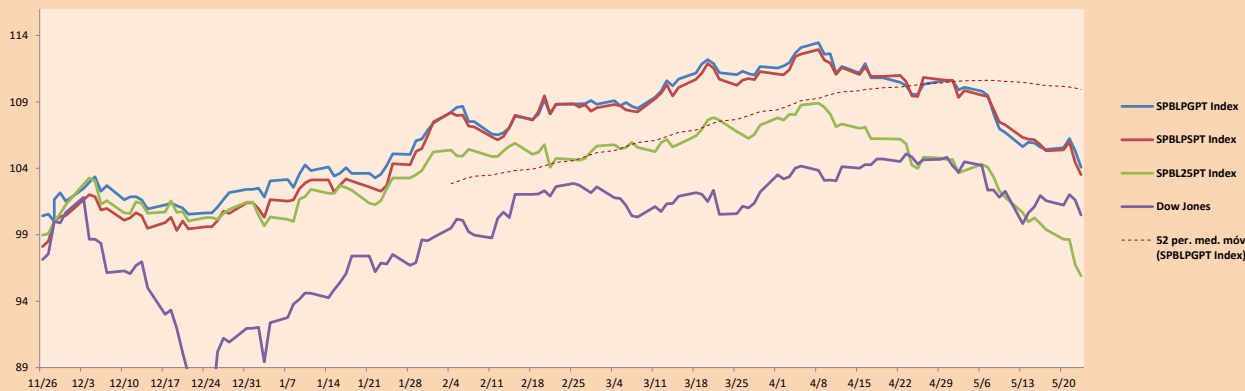
	Close	1D*	5D*	30D*	YTD*	Beta
▲ Mining Index	274.50	0.02%	-3.75%	-9.50%	-104.95%	1.42
▲ Consumer Index	1,170.84	0.16%	-1.15%	-0.84%	-83.29%	0.46
▲ Industrial Index	215.72	1.31%	-1.31%	-6.65%	-105.35%	0.51
▼ Banking and Financial Index	1,218.55	-0.64%	-1.59%	-5.66%	-96.78%	1.18
▲ Construction Index	236.13	0.90%	-0.17%	-7.05%	-105.05%	0.57
▲ Services Index	446.26	0.50%	0.04%	0.46%	-88.25%	0.16
▼ Juniors Index	20.86	-0.76%	-7.17%	-11.91%	-127.85%	0.69
▲ Electric Index	435.66	0.49%	0.05%	0.46%	-88.25%	0.16

*Legend: Variation 1D: 1 Day; 5D: 5 Days, 1M: 1 Month; YTD: Var.% 12/31/18 to date

Correlation Graph of Returns of Mining Index against Metallic Index of London (3 months)



Indices (6 months)



Source: Bloomberg

Capital Market Laboratory Coordinator: Economist Bruno Bellido Anicama
 Collaboration: Juan Carlos Figueroa, Pablo Llanos, Jorge Retamozo and Marcia Rojas.
 e-mail: pulsohorsatil@ulima.edu.pe
 facebook: www.facebook.com/pulsohorsatil.ul
 Phone number : 4376767 Annex: 35340

The content of this document is just for informational purposes. The information and opinions expressed should not be considered as recommendations for future decisions. Under any circumstances, the Capital Market Laboratory of University of Lima will be responsible for the use of the statements in this document.

PULSO BURSÁTIL

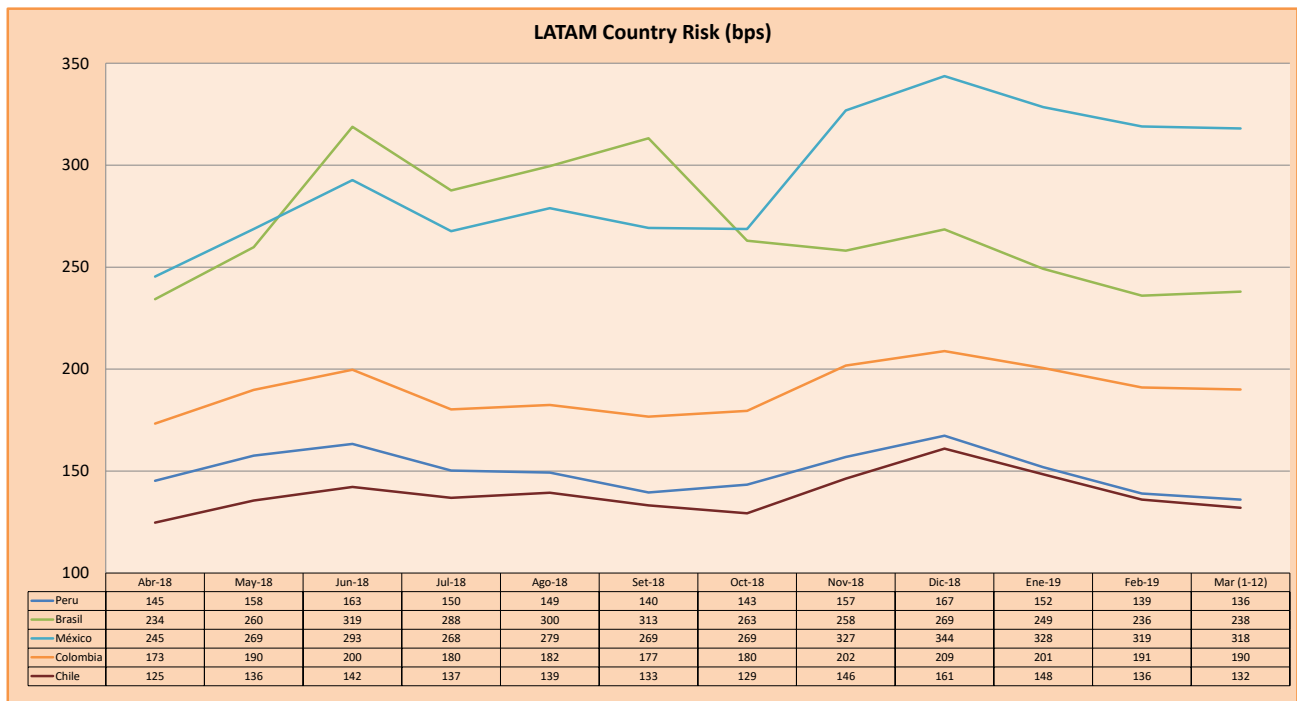
SOVEREIGN RATING

RISK RATINGS			
Moody's	S&P	Fitch	
Aaa	AAA	AAA	Prime
Aa1	AA+	AA+	High credit quality
Aa2	AA	AA	
Aa3	AA-	AA-	
A1	A+	A+	Medium-high grade, with low credit risk
A2	A	A	
A3	A-	A-	
Baa1	BBB+	BBB+	Moderate Credit Risk
Baa2	BBB	BBB	
Baa3	BBB-	BBB-	
Ba1	BB+	BB+	It has speculative elements and it is subject to substantial credit risk
Ba2	BB	BB	
Ba3	BB-	BB-	
B1	B+	B+	It is considered speculative and it has high credit risk
B2	B	B	
B3	B-	B-	
Caa1	CCC+	CCC	Bad credit conditions and it is subject to high credit risk
Caa2	CCC		
Caa3	CCC-		
Ca	CC	DDD	Very close to default or in default
C	C		
	D		

Source: Bloomberg

Latin America Credit Rating			
Clasificadora de riesgo			
Country	Moody's	Fitch	S&P
Peru	A3	BBB+	BBB+
Mexico	A3	BBB+	BBB+
Venezuela	C	C	SD
Brazil	Ba2	BB-	BB-
Colombia	Baa2	BBB	BBB-
Chile	A1	A	A+
Argentina	B2	B	B
Panama	Baa1	BBB	BBB+

Source: Bloomberg



Source: BCRP

Capital Market Laboratory Coordinator: Economist Bruno Bellido Anicama
Collaboration: Juan Carlos Figueroa, Pablo Llanos, Jorge Retamozo and Marcia Rojas.
e-mail: pulsobursatil@ulima.edu.pe
facebook: www.facebook.com/pulsobursatil.ul
Phone number : 4376767 Annex: 35340

The content of this document is just for informational purposes. The information and opinions expressed should not be considered as recommendations for future decisions. Under any circumstances, the Capital Market Laboratory of University of Lima will be responsible for the use of the statements in this document.