

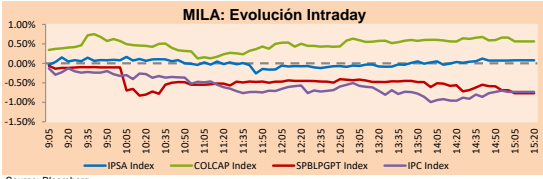
PULSO BURSÁTIL

Lima, June 13, 2019

MILA

Main Indices	Close	1 D	5 D	1 M	YTD	Market Cap. (US\$ bill)
▲ IPSA (Chile)	5,071.76	0.08%	2.94%	2.05%	-0.66%	147.10
▲ IGPA (Chile)	25,767.95	0.05%	2.50%	1.55%	-0.70%	190.40
▲ IGBC (Colombia)	12,286.94	0.58%	1.74%	-0.62%	10.26%	96.96
▲ COLCAP (Colombia)	1,521.69	0.56%	2.13%	0.39%	14.76%	98.44
▼ S&P/BVL (Perú)*	20,250.85	-0.77%	0.68%	1.47%	4.65%	106.97
▼ S&P/BVL SEL (Perú)	543.17	0.16%	1.64%	1.12%	6.02%	79.17
▼ S&P/BVL LIMA 25	25,944.14	-0.27%	1.51%	-1.36%	-2.12%	88.03
▼ IPC (México)	43,483.20	-0.72%	0.78%	0.79%	4.43%	283.10
▼ S&P MILA 40	629.76	-0.48%	2.28%	1.89%	3.47%	260.74

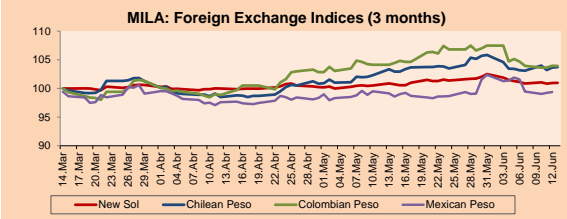
* Market Cap. Of the last price Legend: Variation 1D: 1 day; 5D: 5 days; 1M: 1 Month; YTD: Var%12/31/18 to date



Source: Bloomberg

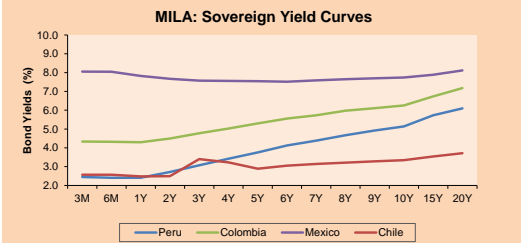
Currency	Price	1D*	5D*	30 D*	YTD*
▲ New Sol (PEN)	3,331.0	0.01%	-0.16%	0.26%	-1.13%
▲ Chilean Peso (CLP)	696.05	0.05%	0.52%	0.75%	0.35%
▼ Colombian Peso (COP)	3,268.13	-0.03%	-0.70%	-0.51%	0.57%
▲ Mexican Peso (MXN)	19.19	0.13%	-2.50%	0.23%	-2.32%

*Legend: Variation 1D: 1 day; 5D: 5 days; 1M: 1 Month; YTD: Var%12/31/18 to date



Base: 14/03/19=100 Source: Bloomberg

Instrument	Currency	Price	Bid Yield (%)	Ask Yield (%)	Duration
PERU 4.125 08/25/2027	USD	111.151	2.62	2.59	6.97
PERU 7.125 03/30/19	USD	#N/A N/A	#N/A N/A	#N/A N/A	#N/A N/A
PERU 7.35 07/21/25	USD	127.075	2.55	2.50	4.99
PERU 8.75 11/21/33	USD	160.066	3.45	3.42	9.62
PERU 6.55 03/14/37	USD	139.716	3.53	3.51	11.22
PERU 5.625 11/18/2050	USD	135.575	3.71	3.69	17.19
CHILE 2.25 10/30/22	USD	100.334	2.20	2.09	3.23
CHILE 3.875 08/05/20	USD	102.067	2.13	1.90	1.10
CHILE 3.625 10/30/2042	USD	103.332	3.43	3.41	16.01
COLOM 11.75 02/25/20	USD	106.574	2.23	1.93	0.67
COLOM 11.85 03/09/28	USD	157.65	4.01	3.93	6.11
COLOM 10.375 01/28/33	USD	156.251	4.78	4.67	8.44
COLOM 7.375 09/18/37	USD	133.115	4.67	4.65	11.09
COLOM 6.125 01/18/41	USD	120.709	4.62	4.58	12.70
MEX 4 10/02/23	USD	104.107	3.01	2.94	3.91
MEX5.55 01/45	USD	113.162	4.671	4.657	14.22



Source: Bloomberg

Equity	Exchange	Amt.	Price	▲ %
Largest gains				
MARINSA	Santia.	CLP	40.00	166.67
ESVAL-C	Santia.	CLP	0.02	20.00
CAMPOS	Santia.	CLP	29.00	15.54
PODERC1	Lima	PEN	12.50	13.64

Per Turnover	Exchange	Amount (US\$)
CHILE	Santia.	18,736,068
FALABELLA	Santia.	16,422,355
SQM-B	Santia.	8,489,235
CMPC	Santia.	7,584,901
CENCOSUD	Santia.	7,038,809

Largest losses	Exchange	Amt.	Price	▼ %
GRAMONC1	Lima	PEN	2.05	-5.09
COLOSO	Santia.	CLP	64.00	-4.46
BAP	Lima	USD	221.10	-2.59
CONCES1	Lima	PEN	3.32	-2.35

Per Volume	Exchange	Volume
CHILE	Santia.	131,174,343
VAPORES	Santia.	109,306,881
BSANTANDER	Santia.	70,452,638
COLBUN	Santia.	15,160,922
VENTANAS	Santia.	14,293,979

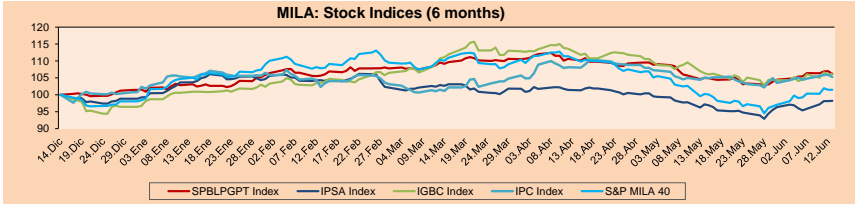
MILA

Peru: The General Index of the BVL ended today's session with a negative result of -0.77%. The index maintains a cumulative positive annual trend of +4.65% in local currency, while the yield adjusted in dollars amounts to +5.85%. Then, the S & P / BVL Peru SEL advanced +0.16% while the S & P / BVL LIMA 25 retreated -0.27%. The spot PEN reached \$ / 3.3280. **Headline:** Peruvian economy would have grown 0.5% in April, its worst level in two years.

Chile: The IPSA index ended the day with a positive return of +0.08%. The sectors of the index with the most positive results were Industrial (+1.11%) and Products of first necessity (+0.48%). On the other hand, the shares with the highest results were Compañía Sudamericana de Vapo (+2.50%) and Embotelladora Andina SA (+1.54%). **Headline:** Banco Estado de Chile places 3m of UF in 5-year bonds at 0.64%.

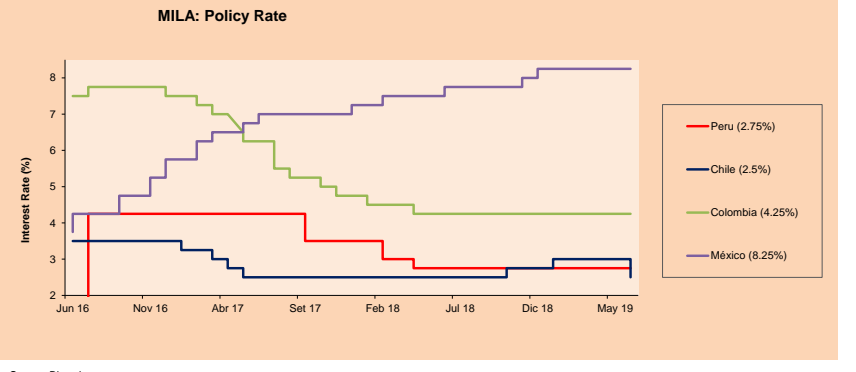
Colombia: The COLCAP index closed the session with a positive result of +0.56%. The sectors with the highest yields were Communication Services (+8.94%) and Energy (+1.47%). In addition, the shares with the highest yields were Empresa de Telecomunicaciones (+9.84%) and Empresa de Energía de Bogotá (+2.35%). **Headline:** Colombian local bonds have their biggest rebound since March

Mexico: The IPC index closed the session with a negative result of -0.72%. The sectors with the lowest yields were Non-basic consumer products (-1.64%) and Products of first necessity (-1.76%). In addition, the stocks with the worst performance were Gruma SAB de CV (-3.78%) and Kimberly-Clark de México of SAB de CV (-3.35%). **Headline:** Trump's tariff threat excludes Mexico from court fees



Base: 17/12/18=100 Source: Bloomberg

ETFs	Curr.	Close	1D	5D	30 D	YTD	Exchange
▼ iShares MSCI All Peru Capped Index Fund	USD	36.46	-0.03%	1.82%	1.11%	2.70%	NYSE Arca
▲ iShares MSCI Chile Capped	USD	40.47	0.20%	2.38%	0.47%	-2.27%	Cboe BZX
▼ Global X MSCI Colombia	USD	12.8	-0.19%	3.14%	1.55%	14.70%	NYSE Arca
▼ iShares MSCI Mexico Capped	USD	44.67	-0.56%	2.90%	0.49%	8.47%	NYSE Arca
▼ iShares MSCI Emerging Markets	USD	41.56	-0.17%	1.71%	1.00%	6.40%	NYSE Arca
▲ Vanguard FTSE Emerging Markets	USD	41.27	0.10%	1.70%	1.05%	8.32%	NYSE Arca
▼ iShares Core MSCI Emerging Markets	USD	50.13	-0.08%	1.64%	1.19%	6.32%	NYSE Arca
▼ iShares JP Morgan Emerging Markets Bonds	USD	58.02	-0.21%	0.71%	2.15%	3.85%	Cboe BZX
▲ Morgan Stanley Emerging Markets Domestic	USD	6.8	0.29%	2.72%	4.13%	12.21%	New York



Source: Bloomberg

Capital Market Laboratory Coodinator: Economist Bruno Bellido Anicama
Collaboration: Juan Carlos Figueroa, Nicolas Llanos, Jorge Retamozo, Marcia Rojas.
e-mail: pulsobursatil@ulima.edu.pe
facebook: www.facebook.com/pulsobursatil.ul
Phone number : 4376767 Annex: 35340



PULSO BURSÁTIL

WORLD

Main Indices	Close	1 D*	5 D*	1 M*	YTD*	Market Cap. (US\$ Mill.)
▲ Dow Jones (USA)	26,106.77	0.39%	1.50%	3.09%	11.91%	7,262,458
▲ Standard & Poor's 500 (USA)	2,891.64	0.41%	1.69%	2.84%	15.35%	24,851,035
▲ NASDAQ Composite (USA)	7,837.13	0.57%	2.91%	2.49%	18.11%	12,047,729
▲ Stoxx EUROPE 600 (Europe)	380.33	0.16%	1.69%	2.08%	12.64%	9,065,223
▲ DAX (Germany)	12,169.05	0.44%	1.57%	2.46%	15.25%	1,000,140
▲ FTSE 100 (United Kingdom)	7,368.57	0.11%	1.50%	2.86%	9.52%	1,559,808
▲ CAC 40 (France)	5,375.63	0.01%	1.84%	2.15%	13.63%	1,462,549
▲ IBEX 35 (Spain)	9,247.10	0.09%	0.85%	2.21%	8.28%	511,537
▼ MSCI AC Asia Pacific Index	156.38	-0.58%	1.82%	0.40%	6.60%	17,937,895
▼ HANG SENG (Hong Kong)	27,294.71	-0.05%	1.49%	-2.94%	5.61%	2,562,964
▲ SHANGHAI SE Comp. (China)	2,910.74	0.05%	1.72%	0.94%	16.71%	4,620,721
▲ NIKKEI 225 (Japan)	21,032.00	-0.46%	1.24%	-0.17%	5.08%	3,221,819
▼ BOVESPA (Brazil)	98,773.70	0.46%	1.61%	7.68%	12.39%	763,348
▼ MERVAL (Argentina)	40,646.28	-0.69%	13.75%	25.84%	34.18%	30,699

*Legend: Variation 1D: 1 Day; 5D: 5 Days; 1M: 1 Month; YTD: Var.% 12/31/18 to date

Equity

Alemania (Acciones del DAX Index)				Exchange				Largest losses							
Symbol	Curr.	Price	▲%	Symbol	Curr.	Price	▼%	Symbol	Curr.	Price	▼%	Symbol	Curr.	Price	▼%
FRE GY	EUR	46.135	1.81	Xetra	DB1 GY	EUR	125.75	-0.95	Xetra	GNK LN	GBP	612.4	-6.10	Londres	
HEI GY	EUR	69.2	1.76	Xetra	IFX GY	EUR	15.188	-0.81	Xetra	PSM GY	EUR	14.8	-4.76	Xetra	
1COV GY	EUR	42.25	1.71	Xetra	CON GY	EUR	125.68	-0.63	Xetra	PSN LN	GBP	1955	-4.49	Londres	
LHA GY	EUR	17.905	1.24	Xetra	BAS GY	EUR	61.64	-0.50	Xetra	WPP LN	GBP	957.6	-4.38	Londres	

Europe (Stocks from STOXX EUROPE 600)				Exchange				Largest losses							
Symbol	Curr.	Price	▲%	Symbol	Curr.	Price	▼%	Symbol	Curr.	Price	▼%	Symbol	Curr.	Price	▼%
SMDS LN	GBP	360.8	5.13	Londres	EN AMST	EUR	14.8	-4.76	Xetra	PSM GY	EUR	14.8	-4.76	Xetra	
LIGHT NA	EUR	26.69	4.67	EN Amsterdam	PSN LN	GBP	1955	-4.49	Londres	WPP LN	GBP	957.6	-4.38	Londres	
SKG ID	EUR	26.98	4.49	EN Dublin											
DIA IM	EUR	102.7	3.48	Borsa Italiana											

Global Overview:

United States:

US markets closed higher today, benefited by the rebound in the energy sector (+1.3%). Due to the fact that two oil tankers were attacked in the Strait of Hormuz, generating doubts about the global supply of oil (+2.15%). Among the stocks that rose, highlights Walt Disney Co. (+4.4%), after Morgan Stanley review the subscribers of Disney Plus, the company's streaming platform. In the same way, the shares related to the oil industry have obtained positive results, such as Occidental Petroleum Corp (+1.93%), Exxon Mobile Corp (+0.88%) and Chevron Corp (+0.60%). On the other side, Twitter Inc. (-3.1%) slipped after it was reported that the market expected a slowdown in revenue and an increase in the company's costs, also, Broadcom Inc. cut its projections of income for the current year, arguing that commercial tensions and trade restrictions towards one of its main customers, implies a fall of 2 million dollars in its income to 22.5 million dollars. Finally, the US Department of Commerce rejected request of Uber Inc. (+2.14%) to be allowed to import electric bicycles without tariffs.

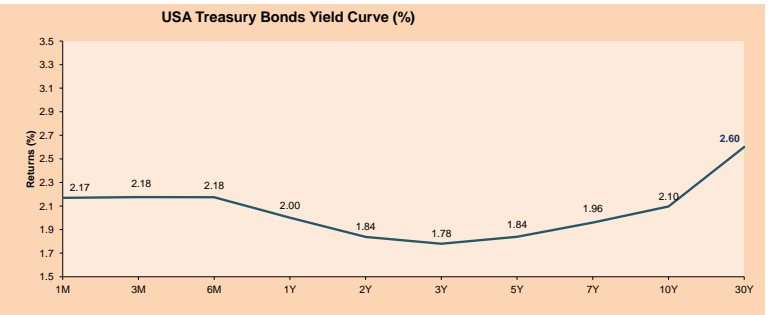
Europe:

The European market closed higher, with the DAX (+0.44%) of higher profits. In the United Kingdom, Boris Johnson, who committed to deliver Brexit on October 31, moved closer to power by gaining more support from conservative lawmakers in the first round of the contest to replace the still PM, Theresa May. On the other hand, according to the Ministry of Economy of Germany, the prospects, the largest economy in Europe, are low for 2Q after the winds against global trade conflicts that affect the industrial sector dependent on exports. The German growth will slow down or even stop, where it had a growth of 0.4% in the period from January to March, after limiting itself to the recession in the last three months of 2018. In corporate news, the head of Tesco, the company Britain's largest retailer, mentioned that there is much to be done after the growth of its quarterly sales slowed down in a grocery market due to bad weather at the beginning of summer. However, Dave Lewis said that, although the overall grocery market in the UK was moderate, the company had exceeded in terms of sales and volume by 0.2% and 1.3%, respectively, citing industry data.

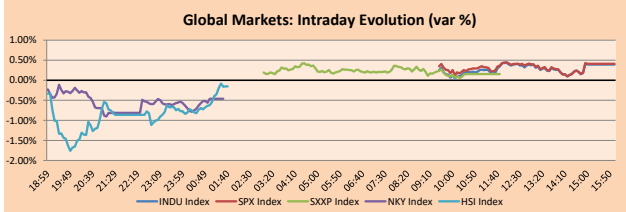
Asia:

The Asian market ended the day with its main indexes trading lower, however, the shares of Shanghai recovered from the initial losses and ended stable in the hope that Beijing will implement new measures to boost the economy in the midst of a trade war with Washington. In line with this last issue, remember that the US government it put Huawei Technologies Co Ltd on a commercial blacklist, forbidding American companies from doing business with it, which is why Chinese leaders have spoken boldly of achieving self-sufficiency in the critical semiconductor business, for which, Huawei requested today the trademark of its operating system "Hongmeng" (OS) in at least nine countries and Europe, as shown by the data of a UN agency. On the other hand, Japan's Nikkei fell on Thursday, with shares related to chips hit after its US counterparts fell. In other news, China's largest e-commerce company, Alibaba Group Holding Ltd, has submitted a confidential request for a Hong Kong listing that could raise up to \$20 billion as early as the third quarter of this year.

ETFs	Curr.	Close	1D	5D	30 D	YTD	Exchange
SPDR S&P 500 ETF TRUST	USD	289.58	0.41%	1.68%	2.18%	15.87%	NYSE Arca
ISHARES MSCI EMERGING MARKET	USD	41.56	-0.17%	1.71%	1.00%	6.40%	NYSE Arca
ISHARES IBOXX HIGH YLD CORP	USD	86.35	0.23%	0.55%	0.84%	6.47%	NYSE Arca
FINANCIAL SELECT SECTOR SPDR	USD	27.18	0.33%	0.07%	1.08%	14.11%	NYSE Arca
VANECK VECTORS GOLD MINERS E	USD	23.24	1.22%	1.62%	11.52%	10.19%	NYSE Arca
ISHARES RUSSELL 2000 ETF	USD	153.07	1.06%	2.18%	-0.31%	14.32%	NYSE Arca
SPDR GOLD SHARES	USD	126.60	0.61%	0.57%	3.38%	4.41%	NYSE Arca
ISHARES 20+ YEAR TREASURY BO	USD	131.13	0.34%	0.40%	4.60%	7.92%	NASDAQ GM
INVESCO QQQ TRUST SERIES 1	USD	183.42	0.59%	3.27%	1.60%	18.90%	NASDAQ GM
ISHARES NASDAQ BIOTECHNOLOGY	USD	104.10	0.75%	1.89%	1.62%	7.95%	NASDAQ GM
ENERGY SELECT SECTOR SPDR	USD	61.41	1.17%	0.89%	-3.63%	7.38%	NYSE Arca
PROSHARES ULTRA VIX USD FUTUR	USD	34.56	-0.78%	-1.51%	-15.29%	-57.71%	NYSE Arca
UNITED STATES OIL FUND LP	USD	10.88	2.26%	-1.63%	-15.46%	12.63%	NYSE Arca
ISHARES MSCI BRAZIL ETF	USD	43.21	1.01%	2.34%	10.88%	13.12%	NYSE Arca
SPDR S&P OIL & GAS EXP & PR	USD	25.44	2.33%	-1.36%	-13.67%	-4.11%	NYSE Arca
UTILITIES SELECT SECTOR SPDR	USD	60.18	0.20%	-0.55%	3.42%	13.72%	NYSE Arca
ISHARES US REAL ESTATE ETF	USD	89.65	0.37%	0.87%	2.89%	19.63%	NYSE Arca
SPDR S&P BIOTECH ETF	USD	83.02	1.59%	2.04%	1.53%	15.71%	NYSE Arca
ISHARES IBOXX INVESTMENT GRA	USD	121.72	0.26%	0.58%	2.20%	7.89%	NYSE Arca
ISHARES JPM MORGAN USD EMERGI	USD	111.36	0.23%	0.49%	2.36%	7.17%	NASDAQ GM
REAL ESTATE SELECT SECT SPDR	USD	37.56	0.13%	0.67%	3.64%	21.16%	NYSE Arca
ISHARES CHINA LARGE-CAP ETF	USD	40.88	0.54%	1.82%	-0.94%	4.61%	NYSE Arca
CONSUMER STAPLES SPDR	USD	59.06	0.22%	1.70%	3.54%	16.31%	NYSE Arca
VANECK VECTORS JUNIOR GOLD M	USD	31.51	1.58%	1.48%	8.47%	4.27%	NYSE Arca
SPDR BBG BARC HIGH YIELD BND	USD	107.88	0.20%	0.58%	0.77%	7.06%	NYSE Arca
VANGUARD REAL ESTATE ETF	USD	89.65	0.43%	1.08%	2.94%	20.22%	NYSE Arca

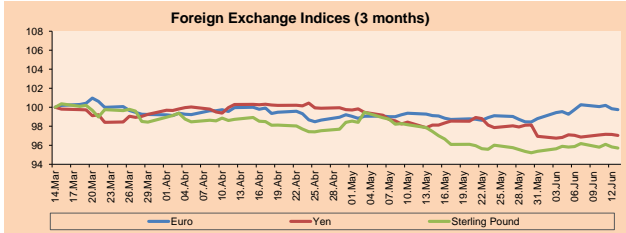


Source: Bloomberg



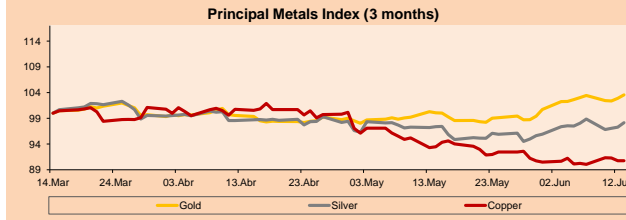
Currency	Price	1 D*	5 D*	1 M*	YTD*
▼ Euro	1.1276	-0.10%	0.00%	0.64%	-1.67%
▼ Yen	108.3800	-0.11%	-0.02%	-1.12%	-1.19%
▼ Sterling Pound	1.2674	-0.12%	-0.16%	-1.79%	-0.63%
▲ Yuan	6.9216	0.06%	0.17%	0.67%	0.63%
▲ Hong Kong Dollar	7.8287	0.06%	-0.15%	-0.26%	-0.04%
▲ Brazilian Real	3.8491	-0.47%	-0.83%	-3.20%	-0.66%
▼ Argentine Peso	43.5294	-0.34%	-3.08%	-3.18%	15.56%

*Legend: Variation 1D: 1 Day; 5D: 5 Days; 1M: 1 Month; YTD: Var.% 12/31/18 to date



Commodities	Close	1 D*	5 D*	1 M*	YTD*
▲ Oro (US\$ Oz. T) (LME)	1,342.29	0.65%	0.52%	3.53%	4.67%
▲ Plata (US\$ Oz. T) (LME)	14.91	0.89%	0.10%	0.78%	-3.79%
- Cobres (US\$ TM) (LME)	5,823.00	0.00%	0.57%	-2.90%	-2.12%
- Zinc (US\$ TM) (LME)	2,627.50	0.00%	-0.53%	-3.20%	4.33%
▲ Petróleo WTI (US\$ Barril) (NYM)	52.20	2.07%	-0.74%	-15.75%	10.36%
- Estano (US\$ TM) (LME)	19,530.00	0.00%	0.77%	-2.37%	0.05%
- Plomo (US\$ TM) (LME)	1,917.25	0.00%	0.30%	7.38%	-4.47%
### Molibdeno (US\$ TM) (LME)	#/A	#/VALOR!	#/VALOR!	#/VALOR!	#/VALOR!
▲ Azúcar #11 (US\$ Libra) (NYB-ICE)	12.91	0.99%	1.49%	5.30%	3.03%
▲ Cacao (US\$ TM) (NYB-ICE)	2,510.00	-1.22%	3.21%	9.80%	1.78%
▼ Café Arábica (US\$ TM) (NYB-ICE)	99.75	-1.72%	-4.64%	6.91%	-9.81%

*Lenda: Variación 1D: 1 Día; 5D: 5 Días; 1M: 1 Mes; YTD: Var.% 31/12/17 a la fecha



Capital Market Laboratory Coordinator: Economist Bruno Bellido Anicama
Collaboration: Juan Carlos Figueroa, Nicolas Llanos, Jorge Retamozo, Marcia Rojas
e-mail: pulsobursatil@ulima.edu.pe
facebook: www.facebook.com/pulsobursatil.ul
Phone number: 4376767 Annex: 35340

PULSO BURSÁTIL

LIMA

Stocks

Ticker	Currency	Price	1D*	5D*	30D*	YTD*	Frequency	Volume (US\$)	Beta	Dividend Yield (%)	Price Earning	Market Cap. (M US\$)	Economic Sector*	Index Weight
▲ ALICORC1 PE**	S/.	10.58	0.09%	0.28%	-2.04%	6.33%	100.00%	90,615	0.65	2.27	20.42	2,708.17	Industrial	3.53%
▲ ATACOCB1 PE**	S/.	0.22	0.00%	7.32%	-10.20%	-31.68%	85.00%	9,246	0.54	0.00	6.00	62.40	Mining	1.02%
▼ BACKUSH1 PE**	S/.	21.60	-1.77%	-1.82%	-6.09%	5.11%	75.00%	23,146	0.34	6.24	7.04	8,827.92	Industrial	0.82%
▼ BAP PE**	US\$	221.10	-2.59%	-1.56%	0.96%	-0.09%	95.00%	380,754	1.11	2.73	-	17,635.26	Diverse	5.82%
▼ BVN PE**	US\$	15.70	-0.13%	-0.95%	1.29%	-2.48%	95.00%	213,409	1.56	0.73	-	4,319.50	Mining	5.88%
▼ CASAGRC1 PE**	S/.	3.38	-0.29%	4.00%	-1.46%	-16.75%	100.00%	3,044	0.62	0.56	11.95	85.47	Agricultural	1.31%
▲ CONTINC1 PE**	S/.	3.72	0.54%	0.54%	0.54%	-5.82%	100.00%	28,009	0.65	4.06	13.94	5,995.56	Finance	2.85%
- CORAREH1 PE**	S/.	0.73	0.00%	5.80%	-1.35%	4.29%	100.00%	29,421	0.91	7.67	3.91	332.45	Industrial	1.72%
- CPACASC1 PE**	S/.	5.72	0.00%	-1.38%	-3.87%	-11.32%	85.00%	185	0.46	6.59	31.78	733.21	Industrial	2.38%
- CVERDEC1 PE**	US\$	20.00	0.00%	1.52%	-4.76%	-3.85%	85.00%	5,015	1.05	2.14	38.54	7,001.12	Mining	5.25%
▲ ENGEPEC1 PE**	S/.	2.28	0.44%	-0.87%	0.88%	17.53%	65.00%	4,381	0.66	4.66	10.15	1,943.07	Public Services	1.44%
- ENDISPC1**	S/.	5.40	0.00%	0.37%	0.93%	1.31%	50.00%	88,114	0.69	0.00	9.34	1,035.20	Public Services	0.98%
- FERREYC1 PE**	S/.	2.20	0.00%	0.00%	-8.71%	-13.39%	100.00%	157,940	0.64	2.33	8.52	644.40	Diverse	4.90%
▼ GRAMONC1 PE**	S/.	2.05	-5.09%	-6.82%	0.00%	3.02%	80.00%	230,523	0.67	0.00	-	448.92	Diverse	4.05%
▲ IFS PE**	US\$	45.31	0.47%	4.11%	1.82%	7.88%	80.00%	100,448	0.68	3.86	14.46	5,125.05	Diverse	7.22%
- INRETC1 PE**	US\$	37.80	0.00%	3.56%	3.14%	33.57%	95.00%	1,746,927	1.00	0.90	39.89	3,886.12	Diverse	5.28%
▲ LUSURC1 PE**	S/.	12.51	0.08%	1.13%	4.25%	14.25%	90.00%	149,598	0.43	5.92	10.49	1,828.81	Public Services	1.81%
- MINSUR1 PE**	S/.	1.68	0.00%	6.33%	5.00%	21.74%	65.00%	93,447	1.43	0.00	-	1,454.05	Mining	3.09%
- PML PE**	US\$	0.12	0.00%	-3.23%	-19.46%	-31.43%	55.00%	13,260	1.62	0.00	-	31.66	Mining	2.12%
▼ RELAPAC1 PE**	S/.	0.12	-0.81%	-4.27%	-9.63%	-3.17%	100.00%	12,718	0.66	0.00	-	304.70	Industrial	2.12%
▼ SCCO PE**	US\$	37.40	-0.27%	6.25%	6.55%	22.22%	80.00%	88,642	5.47	19.79	28,911.86	Mining	2.14%	
- SIDERC1 PE**	S/.	0.71	0.00%	7.58%	-15.48%	29.09%	100.00%	28,699	1.40	14.38	0.09	261.73	Industrial	1.43%
- TV PE**	US\$	0.21	0.00%	1.46%	-16.40%	-29.63%	95.00%	3,135	1.85	0.00	-	170.88	Mining	2.93%
- UNACEMC1 PE**	S/.	2.45	0.00%	0.82%	-5.77%	-5.77%	70.00%	6,923	0.77	2.12	13.11	1,337.26	Industrial	3.00%
▲ VOLCABC1 PE**	S/.	0.57	1.79%	9.62%	17.77%	-19.72%	100.00%	283,834	1.12	2.39	42.33	2,134.36	Mining	5.90%

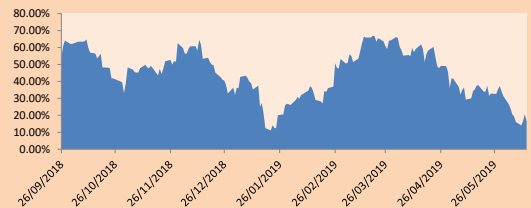
Quantity of shares: 25
 Source: Bloomberg, Economatika
 * Bloomberg Industry Classification System
 ** PER is used in the stock market and original currency of the instrument
 *Legend: Variation 1D: 1 Day; 5D: 5 Days, 1M: 1 Month; YTD: Var.% 12/31/18 to date

Sectorial Indices

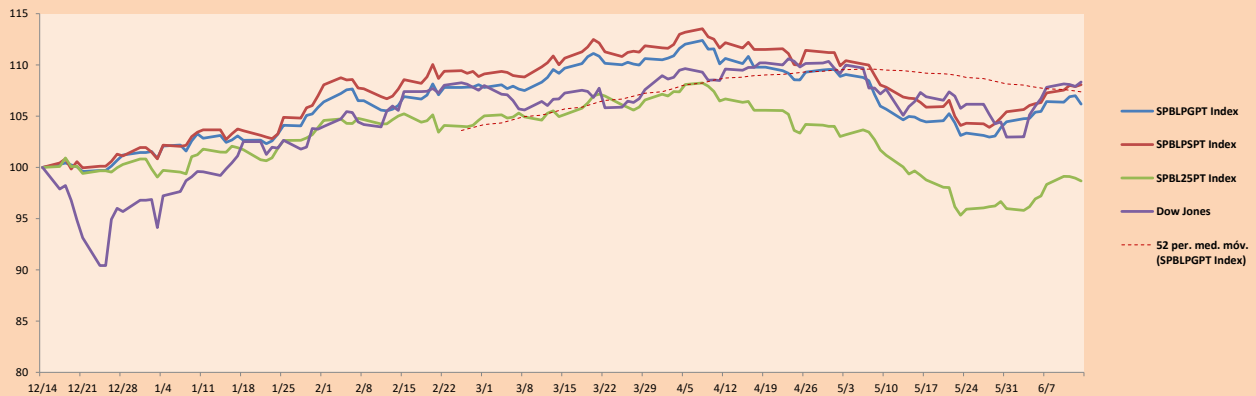
	Close	1D*	5D*	30D*	YTD*	Beta
▼ Mining Index	296.92	-0.13%	2.33%	3.27%	4.24%	1.67
▼ Consumer Index	1,177.01	-0.20%	1.23%	-0.36%	17.04%	0.35
▼ Industrial Index	217.69	-1.02%	-1.11%	-4.06%	-4.06%	0.39
▼ Banking and Financial Index	1,223.13	-2.18%	-1.26%	1.19%	1.93%	1.13
▼ Construction Index	239.90	-1.53%	-1.76%	-2.74%	-2.43%	0.38
▲ Services Index	446.54	0.13%	0.13%	0.61%	12.31%	0.16
▼ Juniors Index	20.32	-0.05%	-1.22%	-8.88%	-30.98%	0.38
▲ Electric Index	435.94	0.13%	0.13%	0.61%	12.31%	0.16

*Legend: Variation 1D: 1 Day; 5D: 5 Days, 1M: 1 Month; YTD: Var.% 12/31/18 to date

Correlation Graph of Returns of Mining Index against Metallic Index of London (3 months)



Indices (6 months)



Source: Bloomberg

Capital Market Laboratory Coordinator: Economist Bruno Bellido Anicama
 Collaboration: Juan Carlos Figueroa, Nicolas Llanos, Jorge Retamozo, Marcia Rojas.
 e-mail: pulsobursatil@ulima.edu.pe
 facebook: www.facebook.com/pulsobursatil.ul
 Phone number : 4376767 Annex: 35340

The content of this document is just for informational purposes. The information and opinions expressed should not be consider as recommendations for future decisions. Under any circumstances, the Capital Market Laboratory of University of Lima will be responsible for the use of the statements in this document.

PULSO BURSÁTIL

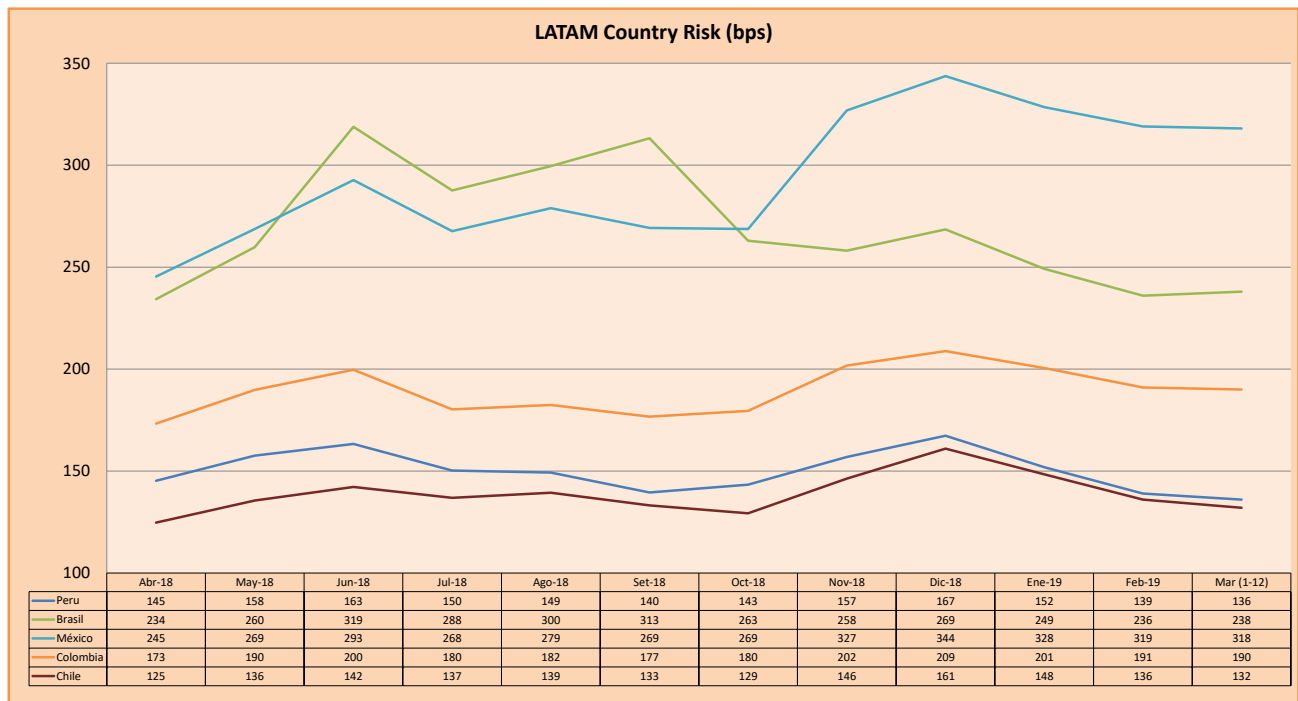
SOVEREIGN RATING

RISK RATINGS			
Moody's	S&P	Fitch	
Aaa	AAA	AAA	Prime
Aa1	AA+	AA+	High credit quality
Aa2	AA	AA	
Aa3	AA-	AA-	
A1	A+	A+	Medium-high grade, with low credit risk
A2	A	A	
A3	A-	A-	
Baa1	BBB+	BBB+	Moderate Credit Risk
Baa2	BBB	BBB	
Baa3	BBB-	BBB-	
Ba1	BB+	BB+	It has speculative elements and it is subject to substantial credit risk
Ba2	BB	BB	
Ba3	BB-	BB-	
B1	B+	B+	It is considered speculative and it has high credit risk
B2	B	B	
B3	B-	B-	
Caa1	CCC+	CCC	Bad credit conditions and it is subject to high credit risk
Caa2	CCC		
Caa3	CCC-		
Ca	CC	DDD	Very close to default or in default
C	C		
	D		

Source: Bloomberg

Latin America Credit Rating			
Clasificadora de riesgo			
Country	Moody's	Fitch	S&P
Peru	A3	BBB+	BBB+
Mexico	A3	BBB	BBB+
Venezuela	C	C	SD
Brazil	Ba2	BB-	BB-
Colombia	Baa2	BBB	BBB-
Chile	A1	A	A+
Argentina	B2	B	B
Panama	Baa1	BBB	BBB+

Source: Bloomberg



Source: BCRP

Capital Market Laboratory Coordinator: Economist Bruno Bellido Anicama
Support: Pablo Llanos, Samuel Machacuy, Jorge Retamozo, Marcia Rojas.
e-mail: pulsobursatil@ulima.edu.pe
facebook: www.facebook.com/pulsobursatil.ul
Phone number : 4376767 Annex: 35340

The content of this document is just for informational purposes. The information and opinions expressed should not be considered as recommendations for future decisions. Under any circumstances, the Capital Market Laboratory of University of Lima will be responsible for the use of the statements in this document.