

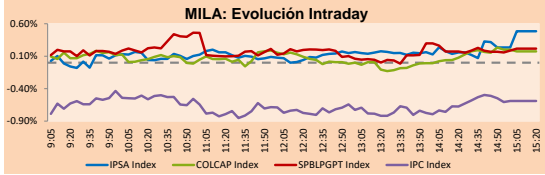
PULSO BURSÁTIL

Lima, July 25, 2019

MILA

Main Indices	Close	1 D	5 D	1 M	YTD	Market Cap. (US\$ bill)
▲ IPSA (Chile)	4,992.75	0.47%	-0.96%	-2.07%	-2.21%	144.04
▲ IGPA (Chile)	25,345.68	0.33%	-1.08%	-2.11%	-2.33%	186.89
▲ IGBC (Colombia)	12,937.68	0.18%	0.62%	2.26%	16.09%	105.50
▲ COLCAP (Colombia)	1,595.47	0.17%	0.54%	2.41%	20.33%	107.00
▲ S&P/BVL (Perú)*	20,817.15	0.27%	-0.49%	1.05%	7.58%	108.94
▲ S&P/BVL SEL (Perú)	549.72	0.21%	-0.11%	0.54%	7.29%	81.02
▲ S&P/BVL LIMA 25	26,262.23	0.58%	0.31%	1.00%	-0.93%	89.77
▲ IPC (México)	40,933.43	-0.57%	-1.65%	-6.53%	-1.70%	270.10
▼ S&P MILA 40	644.17	-0.46%	-1.65%	-1.25%	5.84%	266.02

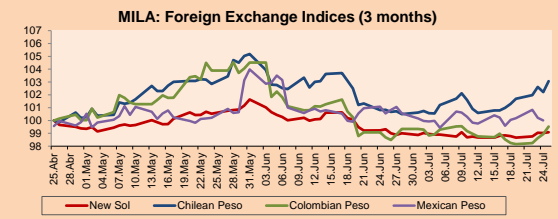
* Market Cap. Of the last price Legend: Variation 1D: 1 day; 5D: 5 days; 1M: 1 Month; YTD: Var%12/31/18 to date



Source: Bloomberg

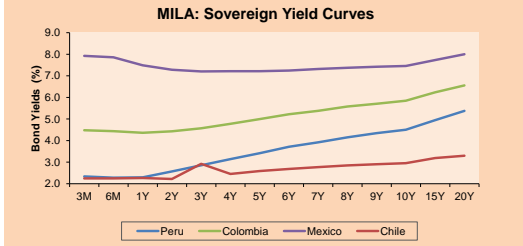
Currency	Price	1D*	5D*	30 D*	YTD*
▲ New Sol (PEN)	3,2968	0.07%	0.30%	-0.21%	-2.14%
▲ Chilean Peso (CLP)	696.08	0.83%	1.75%	2.21%	0.36%
▲ Colombian Peso (COP)	3,217.58	0.59%	1.29%	0.84%	-0.99%
▼ Mexican Peso (MXN)	19.02	-0.20%	0.42%	-1.06%	-3.20%

*Legend: Variation 1D: 1 day; 5D: 5 days; 1M: 1 Month; YTD: Var%12/31/18 to date



Base: 25/04/19=100 Source: Bloomberg

Instrument	Currency	Price	Bid Yield (%)	Ask Yield (%)	Duration
PERU 4.125 08/25/2027	USD	111.399	2.57	2.54	6.86
PERU 7.35 07/21/25	USD	127.469	2.41	2.37	5.03
PERU 8.75 11/21/33	USD	163.197	3.22	3.19	9.58
PERU 6.55 03/14/37	USD	142.016	3.39	3.35	11.18
PERU 5.625 11/18/2050	USD	138.592	3.58	3.56	17.29
CHILE 2.25 10/30/22	USD	100.359	2.19	2.09	3.11
CHILE 3.875 08/05/20	USD	101.988	2.01	1.77	0.99
CHILE 3.625 10/30/2042	USD	104.753	3.34	3.32	15.98
COLOM 11.75 02/25/20	USD	105.504	2.20	1.84	0.55
COLOM 11.85 03/09/28	USD	158.683	3.84	3.76	6.01
COLOM 10.375 01/28/33	USD	157.663	4.65	4.54	8.37
COLOM 7.375 09/18/37	USD	137.977	4.35	4.31	11.12
COLOM 6.125 01/18/41	USD	125.18	4.33	4.30	13.09
MEX 4 10/02/23	USD	104.98	2.76	2.70	3.80
MEX 5.55 01/45	USD	116.27	4.485	4.462	14.66



Source: Bloomberg

Equity	Exchange	Amt.	Price	▲ %
Largest gains				
ONEC	Colomb.	COP	11680.00	6.18
COCESUC1	Lima	PEN	7.00	5.74
FERREYC1	Lima	PEN	2.21	4.74
CRETEX11	Lima	PEN	0.70	4.48

Largest losses	Exchange	Amt.	Price	▼ %
ESVAL-C	Santia.	CLP	0.02	-11.11
CONCONCRET	Colomb.	COP	501.00	-5.47
ORO BLANCO	Santia.	CLP	3.43	-4.58
CMPC	Santia.	CLP	1623.00	-4.47

Per Turnover	Exchange	Amount (US\$)
ECOPETROL	Colomb.	13,662,041
CHILE	Santia.	6,698,743
EXITO	Colomb.	6,651,095
CENCOSUD	Santia.	6,390,747
FALABELLA	Santia.	6,093,394

Per Volume	Exchange	Volume
BSANTANDER	Santia.	55,112,815
CHILE	Santia.	46,572,985
NORTEGRAN	Santia.	28,000,000
ECOPETROL	Colomb.	14,662,303
COLBUN	Santia.	13,773,319

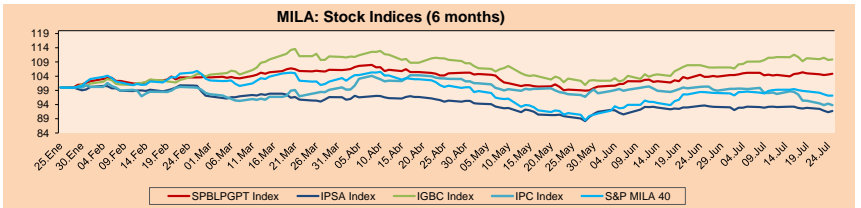
LATIN AMERICA

Peru: The General Index of the BVL ended today's session with a positive result of +0.27%. The index maintains a cumulative positive annual trend of +7.58% in local currency, while the yield adjusted in dollars amounts to +10.00%. Then, the S&P/BVL Peru SEL advanced +0.21% while the S&P/BVL LIMA 25 increased +0.58%. The spot PEN reached \$/3.2955. **Headline:** MEF Infrastructure plan of 52 projects of 100 billion PEN for the next five years.

Chile: The IPSA index ended the day with a positive return of +0.47%. The sectors of the index with the highest results were Financials (+1.74%) and Consumer Discretionary (+1.16%). On the other hand, the values with the highest results Engine Energia Chile SA (+3.65%) and Banco de Credito e Inversiones (+2.63%). **Highlight:** Unemployment rate in Santiago rose to 8.4% in June.

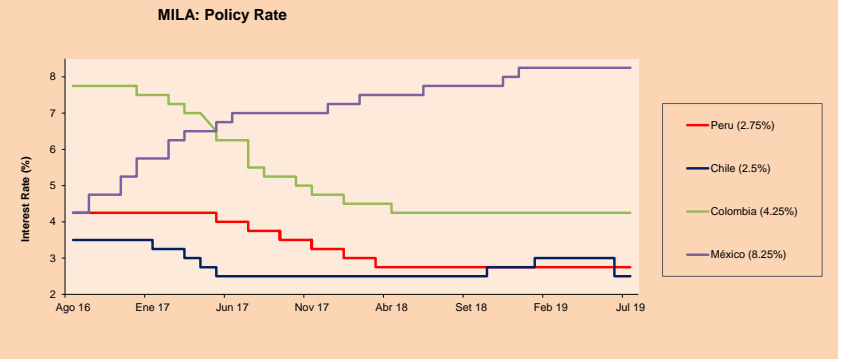
Colombia: The COLCAP index closed the session with a positive result of +0.17%. The sectors with the highest yields were Consumer Staples (+1.53%) and Utilities (+1.41%). In addition, the stocks with the best yields were Canacol Energy Ltd (+6.18%) and Almacenes Exito (+3.90%). **Headline:** Formalizing status of miners could add 1.3 bin USD annually to Colombia GDP.

Brazil: The IBOV index closed the session with a negative result of -1.41%. The sectors with the worst performances were Financials (-3.54%) and Communication Services (-2.05%). In addition, the stocks with the worst performances were Banco Bradesco SA (-5.82%) and Banco do Brasil SA (-4.22%). **Highlight:** Brazilian economy register its higher employment creation in June since 2013.



Base: 28/01/19=100 Source: Bloomberg

ETFs	Curr.	Close	1D	5D	30 D	YTD	Exchange
▼ iShares MSCI All Peru Capped Index Fund	USD	37.6	-0.58%	-0.84%	2.42%	7.89%	NYSE Arca
▼ iShares MSCI Chile Capped	USD	38.9	-0.47%	-3.62%	-4.38%	-4.26%	Cboe BZX
▼ Global X MSCI Colombia	USD	13.3854	-0.29%	-0.92%	1.16%	22.22%	NYSE Arca
▼ iShares MSCI Mexico Capped	USD	41.72	-0.48%	-2.59%	-5.10%	3.37%	NYSE Arca
▼ iShares MSCI Emerging Markets	USD	42.61	-0.88%	-1.09%	0.80%	9.92%	NYSE Arca
▼ Vanguard FTSE Emerging Markets	USD	42.58	-0.58%	-1.05%	1.60%	12.75%	NYSE Arca
▼ iShares Core MSCI Emerging Markets	USD	51.17	-0.72%	-1.24%	0.81%	9.61%	NYSE Arca
▼ iShares JP Morgan Emerging Markets Bonds	USD	58.46	-0.51%	-1.50%	0.10%	5.78%	Cboe BZX
▼ Morgan Stanley Emerging Markets Domestic	USD	7.1	-0.56%	0.42%	3.04%	22.41%	New York



Source: Bloomberg

Capital Market Laboratory Coordinador: Economist Bruno Bellido Anicama
Collaboration: Juan Carlos Figueroa, Pablo Llanos, Jorge Retamozo y Marcia Rojas.
e-mail: pulsobursatil@ulima.edu.pe
facebook: www.facebook.com/pulsobursatil.ul
Phone number : 4376767 Annex: 35340

PULSO BURSÁTIL

WORLD

Main Indices	Close	1 D*	5 D*	1 M*	YTD*	Market Cap. (US\$ Mill.)
▼ Dow Jones (USA)	27,140.98	-0.47%	-0.30%	2.23%	16.35%	7,576,801
▼ Standard & Poor's 500 (USA)	3,003.67	-0.53%	0.29%	2.96%	19.82%	26,081,789
▼ NASDAQ Composite (USA)	8,238.54	-1.00%	0.38%	4.49%	24.16%	12,865,116
▼ Stoxx EUROPE 600 (Europe)	389.52	-0.56%	0.70%	1.60%	15.36%	9,394,163
▼ DAX (Germany)	12,362.10	-1.28%	1.10%	1.09%	17.08%	1,028,247
▼ FTSE 100 (United Kingdom)	7,489.05	-0.17%	-0.05%	0.90%	11.31%	1,612,095
▼ CAC 40 (France)	5,578.05	-0.50%	0.50%	1.15%	17.91%	1,539,620
▼ IBEX 35 (Spain)	9,289.90	-0.43%	0.70%	1.42%	8.78%	519,255
▲ MSCI AC Asia Pacific Index	160.99	0.19%	1.28%	1.07%	9.74%	18,387,665
▲ HANG SENG (Hong Kong)	28,594.30	0.25%	0.47%	1.32%	10.53%	2,699,659
▲ SHANGHAI SE Comp. (China)	2,937.36	0.48%	1.25%	-1.31%	17.78%	4,724,418
▲ NIKKEI 225 (Japan)	21,756.55	0.22%	3.37%	3.18%	8.70%	3,291,650
▲ BOVESPA (Brazil)	102,654.60	-1.41%	-1.97%	2.56%	16.80%	818,264
▲ MERVAL (Argentina)	39,884.35	0.25%	-2.13%	-1.01%	31.66%	29,736

*Legend: Variation 1D: 1 Day; 5D: 5 Days; 1M: 1 Month; YTD: Var. % 12/31/18 to date

Equity

Alemania (Acciones del DAX Index)

Largest gains	Curr.	Price	▲%	Exchange	Largest losses	Curr.	Price	▼%	Exchange
RWE GY	EUR	24.36	0.87	Xetra	VOW3 GY	EUR	154.06	-2.87	Xetra
VNA GY	EUR	44.45	0.38	Xetra	LIN GY	EUR	177.09	-2.36	Xetra
DB1 GY	EUR	126.95	0.20	Xetra	TKA GY	EUR	11.72	-2.09	Xetra
ADS GY	EUR	282.7	0.16	Xetra	IFX GY	EUR	17.73	-2.06	Xetra

Europe (Stocks from STOXX EUROPE 600)

Largest gains	Curr.	Price	▲%	Exchange	Largest losses	Curr.	Price	▼%	Exchange
HWDN LN	Gbp	551.8	8.97	Londres	CLN SE	CHF	18.015	-9.56	SIX Swiss Ex
AZNL LN	Gbp	6850	7.72	Londres	KCR FH	CHF	28.19	-8.83	Helvaki
NOKIA FH	EUR	4.9715	7.31	Helsinki	TGS NO	NOK	226	-5.83	Oslo
SKAB SS	SEK	184.4	5.76	Stockholm	HLE GY	EUR	43.5	-5.64	Xetra

Global Overview:

United States:

The American market closed the session down with Wall Street falling from record highs after a series of mostly disappointing earnings reports and fears that the Federal Reserve may be less aggressive than expected to reduce interest rates next week after the political decision of the European Central Bank. The 11 sectors of the S&P 500 ended up in negative territory, led by a 1.2% drop in energy stocks, while the technology sector backed down steadily after electric car maker Tesla sank 14% on Thursday and Your bonds will be traded down, failing to meet the expectations of investor earnings. In other news, orders for long-term manufactured goods increased by 2% in June, above the 0.7% increase expected by economists surveyed by MarketWatch and improving by a 2.3% decrease in May. Capital orders, a key measure of business investment, also rose to 1.9% growth in June, the best reading in almost a year and a half, although such investment increased only 1% year-over-year.

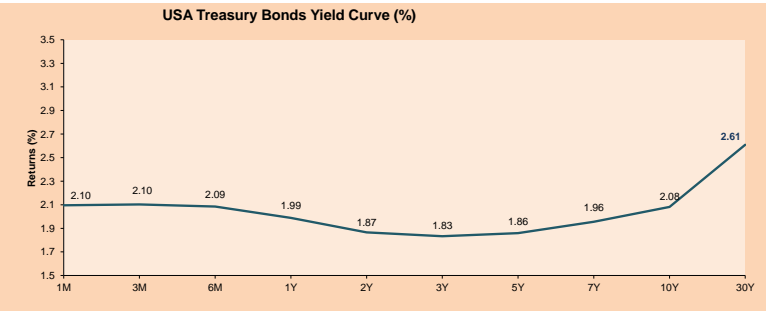
Europe:

The European market closed with negative returns during the day after the Central Bank of Europe still keeps interest rates unchanged; however, it is argued that monetary policy would take place in the coming days. Among the most important indices, the Stoxx 600 pan-European indicator (-0.56%) marked a negative result. Regarding the ECB's decision, the president of the entity, Mario Draghi, announced in a message that implied that some members of the central bank would not be fully convinced of the decisions to combat economic recession in the region. With respect to the most active actions of the day, Cobham (+35.40%), an English company that designs and manufactures a variety of equipment, specialized systems and components for the aerospace, defense, energy and electronics industries, had the most increase big day, because the American firm Advent International Corp decided to buy the English company for an amount of \$5 billion. On the other hand, Sage Group (-10.4%), a software company that develops, publishes and distributes programs for accounting and payroll of personal computers, had the biggest drop the day after the firm reported a decline in its operational income of services of more than 15%.

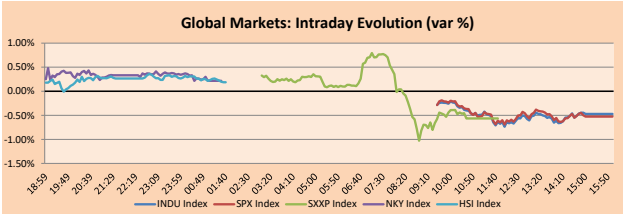
Asia:

The Asian market closed higher. Hong Kong shares rose on the day, led by information technology firms that track a technological rally on Wall Street, even when investors applauded some progress in trade negotiations between China and the United States. The Hang Seng index rose 0.3% to 28,594.30, while the Chinese business index gained 0.7%. It is noted that the main US and Chinese negotiators will meet face-to-face next week for the first time since presidents Donald Trump and Xi Jinping agreed to resume talks to end their one-year trade war. In Japan, foreigners were net sellers of Japanese stocks in the week ending July 19, as gloomy data on exports and firm expectations of earnings in the June quarter reduced appetite for national stocks. According to data from the Japanese exchanges, investors sold 86.25 million net yen (798 million dollars) of Japanese shares, including cash and futures shares that week. In corporate news, almost five years after Alibaba broke records with an IPO of \$25 billion, the company is said to be planning a secondary price in Hong Kong.

ETFs	Curr.	Close	1D	5D	30 D	YTD	Exchange
SPDR S&P 500 ETF TRUST	USD	300.00	-0.48%	0.39%	3.18%	21.15%	NYSE Arca
ISHARES MSCI EMERGING MARKET	USD	42.61	-0.88%	-1.09%	0.80%	9.92%	NYSE Arca
ISHARES IBOXX HIGH YLD CORP	USD	86.98	-0.14%	0.28%	0.48%	10.15%	NYSE Arca
FINANCIAL SELECT SECTOR SPDR	USD	28.38	-0.70%	1.14%	5.03%	20.36%	NYSE Arca
VANECK GOLD MINERS	USD	27.43	-2.56%	-2.90%	7.02%	30.06%	NYSE Arca
ISHARES RUSSELL 2000 ETF	USD	155.36	-1.21%	0.42%	2.79%	16.75%	NYSE Arca
SPDR GOLD SHARES	USD	133.42	-0.71%	-2.24%	-0.58%	10.04%	NYSE Arca
ISHARES 20+ YEAR TREASURY BO	USD	131.16	-0.48%	-0.64%	-1.06%	9.32%	NASDAQ GM
INVESCO QQQ TRUST SERIES 1	USD	193.30	-0.95%	0.46%	4.53%	25.81%	NASDAQ GM
ISHARES NASDAQ BIOTECHNOLOGY	USD	104.20	-1.40%	-2.11%	-2.52%	8.14%	NASDAQ GM
ENERGY SELECT SECTOR SPDR	USD	62.77	-1.13%	0.48%	0.45%	11.32%	NYSE Arca
PROSHARES ULTRA VIX ST FUTUR	USD	24.64	-4.27%	6.53%	-28.38%	-69.85%	NYSE Arca
UNITED STATES OIL FUND LP	USD	11.60	0.09%	0.35%	-3.33%	20.08%	NYSE Arca
ISHARES MSCI BRAZIL ETF	USD	45.09	-1.85%	-3.39%	4.38%	19.54%	NYSE Arca
SPDR S&P OIL & GAS EXP & PR	USD	24.50	-2.97%	0.20%	-5.73%	-7.11%	NYSE Arca
UTILITIES SELECT SECTOR SPDR	USD	59.76	-0.25%	-2.45%	-1.45%	14.67%	NYSE Arca
ISHARES US REAL ESTATE ETF	USD	88.49	-0.46%	-0.83%	0.53%	19.84%	NYSE Arca
SPDR S&P BIOTECH ETF	USD	84.10	-2.27%	-3.06%	-0.33%	17.25%	NYSE Arca
ISHARES IBOXX HIGH YLD EMERGI	USD	124.17	-0.32%	0.17%	0.76%	12.06%	NYSE Arca
ISHARES JPM MORGAN USD EMERGI	USD	114.18	-0.15%	0.59%	1.91%	12.60%	NASDAQ GM
REAL ESTATE SELECT SECT SPDR	USD	36.93	-0.43%	-1.28%	-0.38%	20.76%	NYSE Arca
ISHARES CHINA LARGE-CAP ETF	USD	42.17	-0.68%	-0.17%	0.84%	9.00%	NYSE Arca
CONSUMER STAPLES SPDR	USD	59.70	0.13%	-1.03%	1.46%	19.11%	NYSE Arca
VANECK JR GOLD MINERS	USD	38.58	-3.38%	-3.38%	10.58%	27.66%	NYSE Arca
SPDR BBG BARC HIGH YIELD BND	USD	108.66	-0.07%	0.31%	0.44%	10.93%	NYSE Arca
VANGUARD REAL ESTATE ETF	USD	87.89	-0.59%	-1.11%	0.16%	19.85%	NYSE Arca



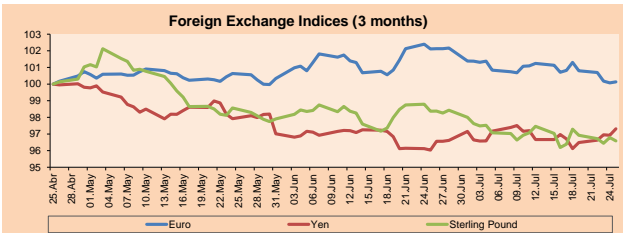
Source: Bloomberg



Source: Bloomberg

Currency	Price	1 D*	5 D*	1 M*	YTD*
▲ Euro	1,1147	0.06%	-1.15%	-1.94%	-2.79%
▲ Yen	108.6300	0.41%	1.24%	1.33%	-0.97%
▼ Sterling Pound	1.2458	-0.21%	-0.73%	-1.82%	-2.32%
▲ Yuan	6.8726	0.01%	-0.11%	-0.10%	-0.09%
▲ Hong Kong Dollar	7.8167	0.03%	0.01%	0.08%	-0.19%
▲ Brazilian Real	3.7792	0.10%	1.55%	-1.82%	-2.46%
▲ Argentine Peso	43.3918	1.18%	2.28%	2.37%	15.20%

*Legend: Variation 1D: 1 Day; 5D: 5 Days; 1M: 1 Month; YTD: Var. % 12/31/18 to date

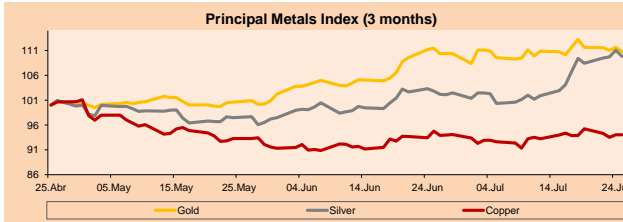


Base: 25/04/19=100

Source: Bloomberg

Commodities	Close	1 D*	5 D*	1 M*	YTD*
▼ Oro (US\$ Oz. T) (LME)	1,414.54	-0.80%	-2.18%	-0.53%	10.30%
▼ Plata (US\$ Oz. T) (LME)	16.41	-1.13%	0.37%	6.77%	5.91%
▼ Cobres (US\$ T) (LME)	5,978.75	0.00%	0.14%	-0.78%	0.50%
▼ Zinc (US\$ T) (LME)	2,455.50	0.00%	-0.02%	-7.67%	-2.50%
▲ Petróleo WTI (US\$ Barril) (NYM)	56.02	0.25%	1.08%	-3.23%	17.10%
- Estafío (US\$ T) (LME)	17,935.00	0.00%	0.70%	-5.93%	-8.12%
- Plomo (US\$ T) (LME)	2,086.50	0.00%	1.86%	7.90%	3.95%
▼ Azúcar #11 (US\$ Libra) (NYB-ICE)	12.00	-0.50%	3.90%	-4.53%	-4.23%
▼ Cacao (US\$ T) (NYB-ICE)	2,434.00	-1.18%	-0.25%	-1.22%	-1.30%
▼ Café Arabica (US\$ T) (NYB-ICE)	100.65	-0.35%	-7.32%	-6.33%	-9.00%

*Legend: Variación 1D: 1 Día; 5D: 5 Días; 1M: 1 Mes; YTD: Var. % 31/12/17 a la fecha



Base: 25/04/19=100

Source: Bloomberg

Capital Market Laboratory Coordinator: Economist Bruno Bellido Anicama
Colaboration: Juan Carlos Figueroa, Pablo Llanos, Jorge Retamozo y Marcia Rojas
e-mail: pulsoBursatil@ulima.edu.pe
facebook: www.facebook.com/pulsoBursatil
Phone number: 4376767 Anexo: 35340

The content of this document is just for informational purposes. The information and opinions expressed should not be considered as recommendations for future decisions. Under any circumstances, the Capital Market Laboratory of University of Lima will be responsible for the use of the statements in this document.



PULSO BURSÁTIL

LIMA

Stocks

Ticker	Currency	Price	1D*	5D*	30D*	YTD*	Frequency	Volume (US\$)	Beta	Dividend Yield (%)	Price Earning	Market Cap. (M US\$)	Economic Sector*	Index Weight	
-	ALICORC1 PE**	S/.	10.90	0.00%	2.35%	6.03%	11.99%	100.00%	31,042	0.54	2.20	21.04	2,816.70	Industrial	3.53%
▼	ATACOBIC1 PE**	S/.	0.20	-2.44%	-2.44%	-5.21%	-37.89%	70.00%	1,820	0.65	0.00	5.52	57.32	Mining	1.02%
-	BACKUSH1 PE**	S/.	23.00	0.00%	1.28%	6.38%	15.96%	75.00%	2,048	0.37	0.00	7.50	9,181.58	Industrial	0.82%
▲	BAP PE**	US\$	227.84	0.37%	-3.28%	0.51%	5.59%	95.00%	792,944	1.12	2.65	-	18,172.85	Diverse	5.82%
▼	BVN PE**	US\$	17.44	-1.19%	-0.57%	4.12%	8.72%	85.00%	527,863	1.71	0.66	-	4,807.07	Mining	5.88%
▼	CASAGRC1 PE**	S/.	3.30	-2.08%	1.85%	-1.20%	-18.72%	100.00%	4,210	0.51	0.58	11.67	84.32	Agricultural	1.31%
-	BBVAC1 PE**	S/.	3.40	0.00%	0.00%	-1.39%	-2.02%	100.00%	30,558	0.61	4.06	13.97	6,069.43	Finance	2.85%
-	CORAREI1 PE**	S/.	0.74	0.00%	1.37%	0.00%	9.14%	100.00%	21,511	0.96	7.56	3.94	350.79	Industrial	1.72%
▲	CPACASC1 PE**	S/.	6.30	2.44%	10.14%	12.90%	-2.33%	100.00%	2,690,637	0.33	5.98	35.00	815.26	Industrial	2.38%
▼	CVERDEC1 PE**	US\$	20.60	-0.48%	2.49%	-7.21%	0.81%	90.00%	38,089	0.90	2.08	39.69	7,211.15	Mining	5.25%
▼	ENGEPEC1 PE**	S/.	2.59	-0.38%	-0.77%	12.61%	37.04%	80.00%	3,142	0.65	4.11	11.53	2,230.15	Public Services	1.44%
-	ENDISPC1**	S/.	6.15	0.00%	0.00%	13.89%	19.37%	85.00%	17,209	0.67	3.60	10.64	1,191.21	Public Services	0.98%
▲	FERREYC1 PE**	S/.	2.21	4.74%	1.38%	-0.45%	-6.20%	100.00%	618,813	0.80	7.95	7.73	654.05	Diverse	4.90%
▼	GRAMONC1 PE**	S/.	1.85	-2.63%	-5.13%	-9.76%	-7.04%	85.00%	256,620	1.00	0.00	-	409.32	Diverse	4.05%
-	IFS PE**	US\$	44.00	0.00%	-8.33%	-2.00%	8.80%	95.00%	381,437	0.71	3.98	13.89	5,027.48	Diverse	7.22%
-	INRETC1 PE**	US\$	39.50	0.00%	-1.25%	1.28%	40.82%	100.00%	197,500	1.00	0.86	41.25	4,060.89	Diverse	5.28%
▲	LUSURC1 PE**	S/.	14.30	0.70%	2.07%	6.72%	34.60%	95.00%	55,482	0.33	5.52	11.99	2,112.17	Public Services	1.81%
▼	MINSUR1 PE**	S/.	1.69	-0.59%	5.62%	0.60%	28.03%	90.00%	4,870	1.45	4.48	-	1,477.88	Mining	3.09%
-	PML PE**	US\$	0.12	0.00%	-1.71%	-4.96%	-34.29%	30.00%	4,268	1.62	0.00	-	30.34	Mining	2.12%
-	RELAPAC1 PE**	S/.	0.12	0.00%	1.71%	-0.83%	-5.56%	100.00%	22,783	0.56	0.00	-	300.29	Industrial	2.12%
▲	SCCO PE**	US\$	37.46	0.16%	2.13%	-4.19%	26.94%	85.00%	43,867	1.69	5.46	19.93	28,958.25	Mining	2.14%
▲	SIDERC1 PE**	S/.	0.67	3.08%	0.00%	-5.63%	38.72%	100.00%	29,108	1.42	15.24	7.05	249.55	Industrial	1.43%
▼	TV PE**	US\$	0.19	-3.13%	-8.82%	-17.33%	-37.37%	85.00%	31,208	1.77	0.00	-	151.43	Mining	2.93%
▲	UNACEMC1 PE**	S/.	2.40	0.42%	0.00%	0.00%	-6.76%	95.00%	3,403,603	0.55	2.17	12.85	1,323.56	Industrial	3.00%
▲	VOLCABC1 PE**	S/.	0.54	3.85%	3.85%	5.88%	-23.94%	100.00%	129,874	1.21	2.53	40.54	2,134.27	Mining	5.90%
-	NEXAPEC1 PE**	S/.	3.35	0.00%	0.00%	0.00%	-8.74%	70.00%	1,016	1.11	0.00	11.75	1,343.59	Mining	1.56%

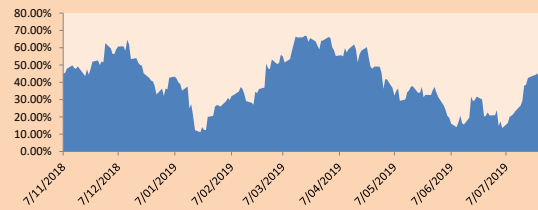
Quantity of shares: 26
 Source: Bloomberg, Económica
 * Bloomberg Industry Classification System
 ** PER is used in the stock market and original currency of the instrument
 *Legend: Variation 1D: 1 Day; 5D: 5 Days, 1M: 1 Month; YTD: Var.% 12/31/18 to date

Sectorial Indices

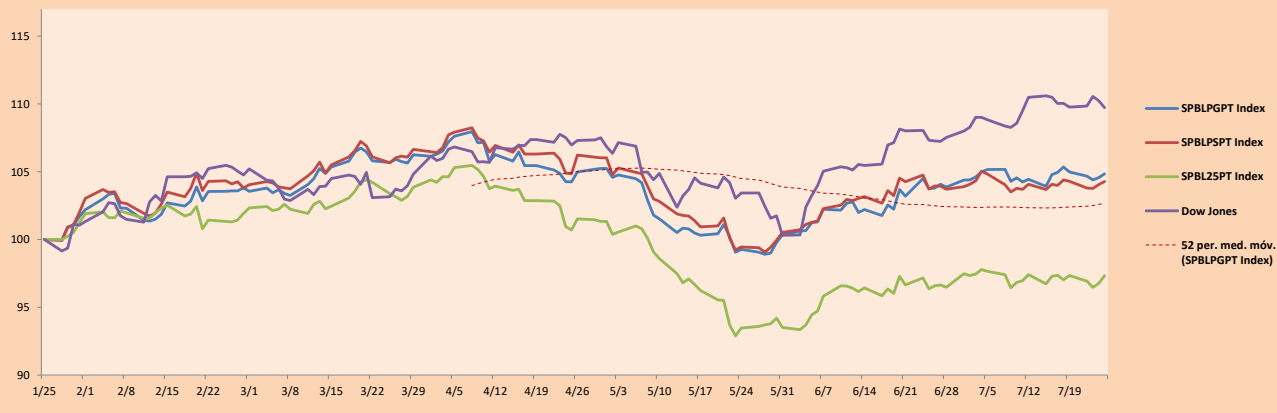
	Close	1D*	5D*	30D*	YTD*	Beta	
▼	Mining Index	307.49	-0.14%	1.29%	-0.23%	7.96%	1.66
▲	Consumer Index	1,220.76	0.09%	0.76%	3.83%	21.39%	0.32
▲	Industrial Index	217.60	1.72%	1.52%	0.37%	-4.10%	0.49
▲	Banking and Financial Index	1,240.36	0.54%	-2.96%	0.26%	3.37%	1.10
▲	Construction Index	239.33	0.38%	1.61%	0.80%	-2.66%	0.39
▼	Services Index	511.68	-0.01%	0.35%	11.01%	28.69%	0.04
▲	Juniors Index	19.70	0.25%	-0.30%	0.72%	-33.08%	0.23
▼	Electric Index	499.53	-0.01%	0.35%	11.01%	28.69%	0.04

*Legend: Variation 1D: 1 Day; 5D: 5 Days, 1M: 1 Month; YTD: Var.% 12/31/18 to date

Correlation Graph of Returns of Mining Index against Metallic Index of London (3 months)



Indices (6 months)



Source: Bloomberg

Capital Market Laboratory Coordinator: Economist Bruno Bellido Anicama
 Collaboration: Juan Carlos Figueroa, Pablo Llanos, Jorge Retamozo y Marcia Rojas.
 e-mail: pulsobursatil@ulima.edu.pe
 facebook: www.facebook.com/pulsobursatil.ul
 Phone number : 4376767 Annex: 35340

The content of this document is just for informational purposes. The information and opinions expressed should not be considered as recommendations for future decisions. Under any circumstances, the Capital Market Laboratory of University of Lima will be responsible for the use of the statements in this document.

PULSO BURSÁTIL

SOVEREIGN RATING

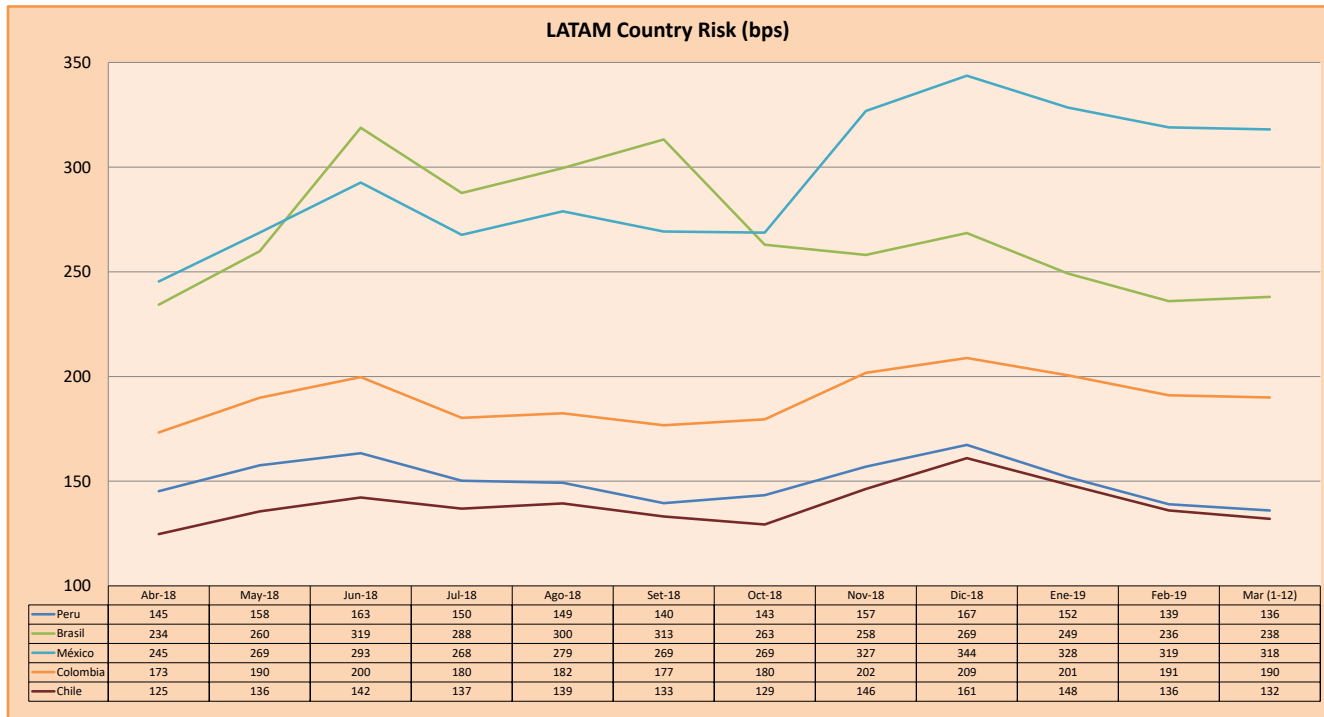
RISK RATINGS

Moody's	S&P	Fitch	
Aaa	AAA	AAA	Prime
Aa1	AA+	AA+	High credit quality
Aa2	AA	AA	
Aa3	AA-	AA-	
A1	A+	A+	Medium-high grade, with low credit risk
A2	A	A	
A3	A-	A-	
Baa1	BBB+	BBB+	Moderate Credit Risk
Baa2	BBB	BBB	
Baa3	BBB-	BBB-	
Ba1	BB+	BB+	It has speculative elements and it is subject to substantial credit risk
Ba2	BB	BB	
Ba3	BB-	BB-	
B1	B+	B+	It is considered speculative and it has high credit risk
B2	B	B	
B3	B-	B-	
Caa1	CCC+		Bad credit conditions and it is subject to high credit risk
Caa2	CCC		
Caa3	CCC-	CCC	
Ca	C		Very close to default or in default
		DDD	
C	D	DD D	

Source: Bloomberg

Latin America Credit Rating			
Clasificadora de riesgo			
Country	Moody's	Fitch	S&P
Peru	A3	BBB+	BBB+
Mexico	A3	BBB	BBB+
Venezuela	C	WD	SD
Brazil	Ba2	BB-	BB-
Colombia	Baa2	BBB	BBB-
Chile	A1	A	A+
Argentina	B2	B	B
Panama	Baa1	BBB	BBB+

Source: Bloomberg



Source: BCRP

Capital Market Laboratory Coordinator: Economist Bruno Bellido Anicama
Support: Juan Carlos Figueroa, Pablo Llanos, Jorge Retamozo y Marcia Rojas.
e-mail: pulsobursatil@ulima.edu.pe
facebook: www.facebook.com/pulsobursatil.ul
Phone number : 4376767 Annex: 35340

The content of this document is just for informational purposes. The information and opinions expressed should not be considered as recommendations for future decisions. Under any circumstances, the Capital Market Laboratory of University of Lima will be responsible for the use of the statements in this document.