



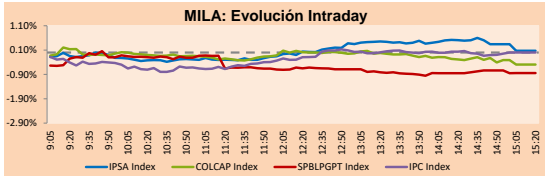
PULSO BURSÁTIL

Lima, August 9, 2019

MILA

Main Indices	Close	1 D	5 D	1 M	YTD	Market Cap. (US\$ bill)
▲ IPSA (Chile)	4,913.10	0.06%	0.57%	-2.79%	-3.77%	139.16
▲ IGPA (Chile)	24,902.87	-0.02%	0.19%	-3.05%	-4.03%	178.94
▼ IGBC (Colombia)	12,518.27	-0.41%	0.00%	-3.01%	12.33%	96.36
▼ COLCAP (Colombia)	1,537.80	-0.49%	0.01%	-3.22%	15.98%	92.00
▼ S&P/BVL (Perú)*	19,487.67	-0.85%	-1.05%	-5.89%	0.71%	101.08
▼ S&P/BVL SEL (Perú)	507.06	-0.84%	-1.48%	-7.08%	-1.03%	73.77
▼ S&P/BVL LIMA 25	24,565.32	-0.33%	-1.26%	-5.60%	-7.33%	82.44
▲ IPC (México)	40,421.28	-0.04%	1.11%	-5.60%	-2.93%	262.11
▲ S&P MILA 40	604.67	2.71%	0.51%	-6.89%	-0.65%	248.24

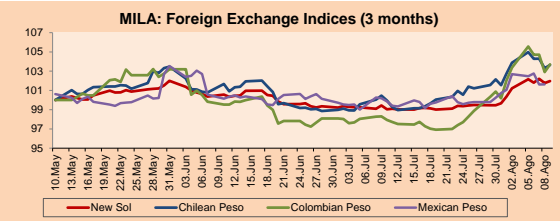
* Market Cap. Of the last price Legend: Variation 1D: 1 day; 5D: 5 days; 1M: 1 Month; YTD: Var%12/31/18 to date



Source: Bloomberg

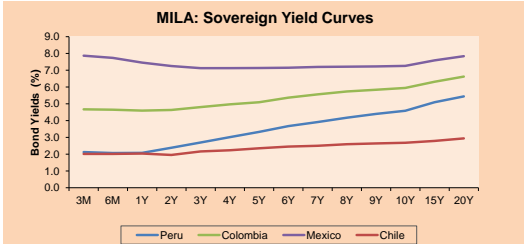
Currency	Price	1D*	5D*	30 D*	YTD*
▲ New Sol (PEN)	3,380.3	0.18%	0.73%	2.95%	0.34%
▲ Chilean Peso (CLP)	711.53	0.32%	-0.23%	3.70%	2.59%
▲ Colombian Peso (COP)	3,395.50	0.78%	0.33%	5.89%	4.48%
▲ Mexican Peso (MXN)	19.41	0.01%	0.56%	1.43%	-1.21%

* Legend: Variation 1D: 1 day; 5D: 5 days; 1M: 1 Month; YTD: Var%12/31/18 to date



Base: 10/05/19=100 Source: Bloomberg

Instrument	Currency	Price	Bid Yield (%)	Ask Yield (%)	Duration
PERU 4.125 08/25/2027	USD	113.404	2.31	2.27	6.82
PERU 7.35 07/21/25	USD	128.673	2.20	2.16	4.99
PERU 8.75 11/21/33	USD	167.231	2.96	2.93	9.60
PERU 6.55 03/14/37	USD	146.405	3.11	3.10	11.23
PERU 5.625 11/18/2050	USD	145.347	3.30	3.29	17.61
CHILE 2.25 10/30/22	USD	101.07	1.92	1.89	3.07
CHILE 3.875 08/05/20	USD	101.968	1.97	1.70	0.96
CHILE 3.625 10/30/2042	USD	109.892	3.03	3.03	16.16
COLOM 11.75 02/25/20	USD	105.304	1.93	1.49	0.51
COLOM 11.85 03/09/28	USD	160.815	3.60	3.52	5.99
COLOM 10.375 01/28/33	USD	156.713	4.71	4.61	8.63
COLOM 7.375 09/18/37	USD	142.323	4.07	4.04	11.18
COLOM 6.125 01/18/41	USD	129.232	4.09	4.05	13.18
MEX 4 10/02/23	USD	105.603	2.60	2.52	3.76
MEX5.55 01/45	USD	119.984	4.263	4.249	14.78



Source: Bloomberg

Equity	Exchange	Amt.	Price	▲ %	Largest losses	Exchange	Amt.	Price	▼ %
Largest gains					INVERNOVA	Santia.	CLP	9.00	0.00
COLTEJER	Colomb.	COP	1950.00	0.00	MELON	Santia.	CLP	0.49	0.00
POTASIOS-A	Santia.	CLP	90.00	0.00	HIPICO	Santia.	CLP	16000000.00	0.00
TV	Lima	USD	0.15	-1.94	MINSURI1	Lima	PEN		
BESALCO	Santia.	CLP	568.60	-0.16					

Per Turnover	Exchange	Amount (US\$)	Per Volume	Exchange	Volume
PFBCOLOM	Colomb.	5,429,586	BSANTANDER	Santia.	54,083,287
FALABELLA	Santia.	4,503,182	CHILE	Santia.	72,366,783
CHILE	Santia.	10,533,418	VAPORES	Santia.	89,042,580
SQM-B	Santia.	9,976,247	COLBUN	Santia.	17,494,793
SANTANDER	Santia.	3,859,102	ORO BLANCO	Santia.	#N/A N/A

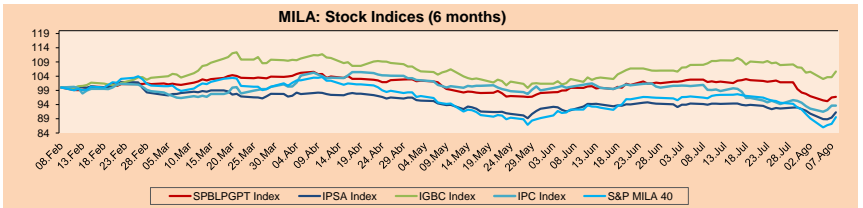
LATIN AMERICA

Peru: The General Index of the BVL ended today's session with a negative result of -0.85%. The index maintains an annual cumulative positive trend of +0.71% in local currency, while the adjusted yield in dollars amounts to +0.37%. Then, the S & P / BVL Peru SEL fell by -0.84% while the S & P / BVL LIMA 25 fell by -0.33%. The PEN spot reached S / 3.3803. Headline: Trade surplus in June scores its highest result so far in 2019

Chile: The IPSA index ended the day with a positive performance of +0.06%. The sectors with the lowest results were Materials (-2.86%) and Industrial (-1.70%). On the other hand, the values with the lowest results were Sonda SA (-0.37%) and Parque Arauco SA (-0.26%). Headline: Chile registers 0.2% inflation in July; government

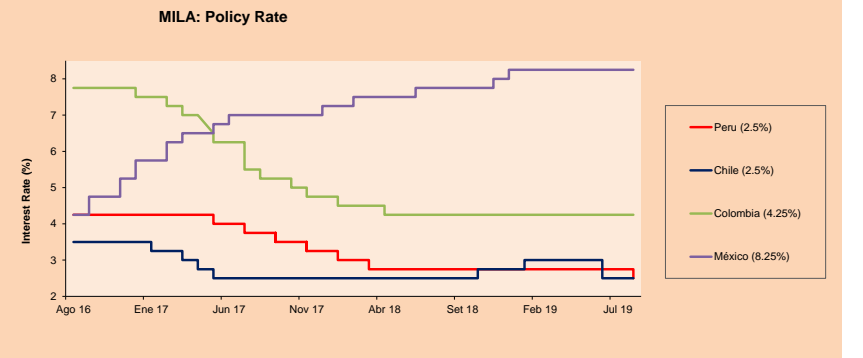
Colombia: The COLCAP index closed the session with a negative result of -0.49%. The sectors with the best yields were Energy (+0.30%). In addition, the shares with the best returns were Compañía Colombiana de Inversi (+1.60%) and Bancolombia SA (+0.71%). Headline: Colombian Grupo Energía de Bogotá specifically purchases assets in Peru from Blue Water

Brazil: The IBOV index closed the session with a negative result of -0.11%. The sectors with the best yields were Health (+8.76%) and Non-basic consumer products (+1.94%). In addition, the actions with better performance were Qualicorp Consultoria e Corret (+36.64%) and B2W Cia, Global Do Varejo (+17.75%). Headline: China Huawei will invest 800 mln dlr in new installation in Brazil in the middle of bidding for 5G.



Base: 11/02/19=100 Source: Bloomberg

ETFs	Curr.	Close	1D	5D	30 D	YTD	Exchange
▼ iShares MSCI All Peru Caped Index Fund	USD	34.22	-1.92%	-1.86%	-8.45%	-1.81%	NYSE Arca
▲ iShares MSCI Chile Capped	USD	37.4	0.21%	0.35%	-7.38%	-7.95%	Cboe BZX
▲ Global X MSCI Colombia	USD	12.625	0.31%	0.65%	-6.24%	15.28%	NYSE Arca
▼ iShares MSCI Mexico Capped	USD	40.51	-0.12%	0.70%	-6.14%	0.37%	NYSE Arca
▼ iShares MSCI Emerging Markets	USD	39.87	-1.02%	-1.68%	-7.06%	2.85%	NYSE Arca
▼ Vanguard FTSE Emerging Markets	USD	40.09	-0.99%	-1.28%	-6.40%	6.16%	NYSE Arca
▼ iShares Core MSCI Emerging Markets	USD	47.99	-0.97%	-1.46%	-6.89%	2.90%	NYSE Arca
▼ iShares JP Morgan Emerging Markets Bonds	USD	56.49	-0.72%	-0.53%	-3.91%	2.22%	Cboe BZX
▼ Morgan Stanley Emerging Markets Domestic	USD	6.87	0.88%	-0.72%	-1.86%	18.45%	New York



Source: Bloomberg

Capital Market Laboratory Coodinador: Economist Bruno Bellido Anicama
Collaboration: Juan Carlos Figueroa, Pablo Llanos, Abril Retamozo y Marcia Rojas.
e-mail: pulsobursatil@ulima.edu.pe
facebook: www.facebook.com/pulsobursatil.ul
Phone number : 4376767 Annex: 35340



PULSO BURSÁTIL

LIMA

Stocks

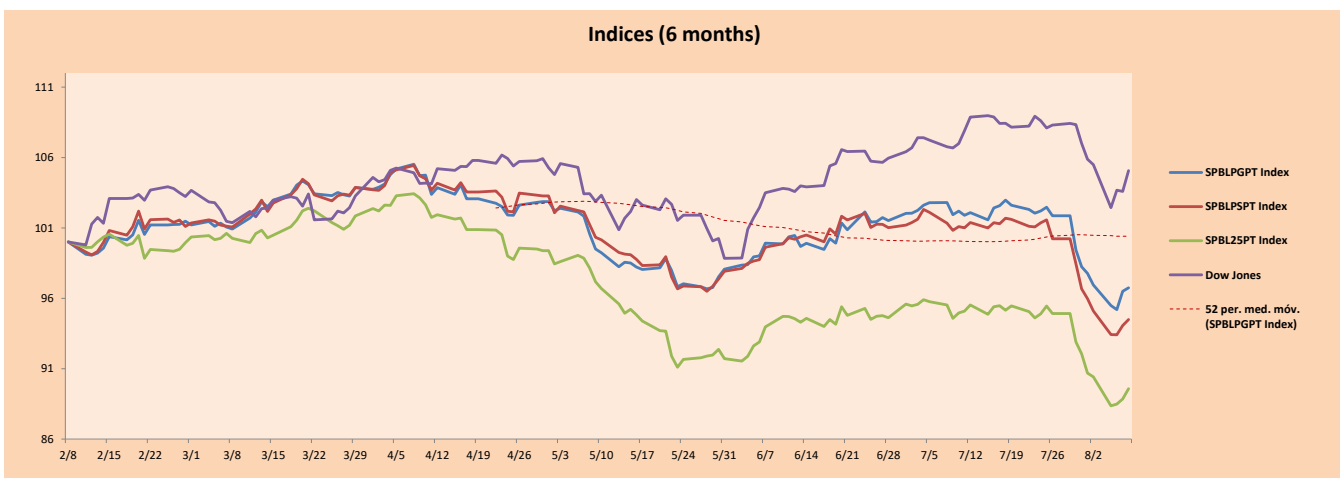
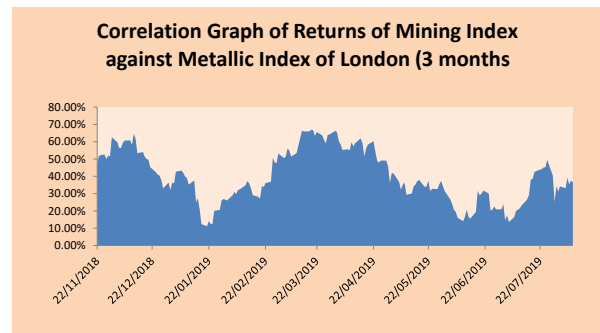
Ticker	Currency	Price	1D*	5D*	30D*	YTD*	Frequency	Volume (US\$)	Beta	Dividend Yield (%)	Price Earning	Market Cap. (M US\$)	Economic Sector*	Index Weight
▼ ALICORC1 PE**	S/.	9.70	-1.52%	-4.43%	-5.37%	-0.34%	100.00%	302,549	0.58	2.47	19.63	2,446.37	Industrial	3.53%
▼ ATACOCB1 PE**	S/.	0.19	-2.06%	0.00%	-9.52%	-40.99%	65.00%	3,205	1.51	0.00	5.11	53.11	Mining	1.02%
▲ BACKUSI1 PE**	S/.	23.50	0.64%	0.86%	1.76%	18.48%	70.00%	24,014	0.36	6.02	7.66	8,953.55	Industrial	0.82%
▼ BAP PE**	US\$	207.30	-3.67%	-2.91%	-12.63%	-3.92%	100.00%	1,862,970	1.14	2.91	-	16,534.55	Diverse	5.82%
▲ BVN PE**	US\$	15.80	3.00%	-0.06%	-4.07%	-1.50%	100.00%	116,892	1.71	0.73	-	4,355.03	Mining	5.88%
- CASAGRC1 PE**	S/.	3.25	0.00%	-1.22%	-1.13%	-19.63%	100.00%	1,494	0.44	0.97	22.30	80.99	Agricultural	1.31%
▼ BBVAC1 PE**	S/.	3.26	-0.31%	0.93%	-3.55%	-6.05%	100.00%	13,115	0.61	4.23	12.88	5,675.76	Finance	2.85%
- CORAREI1 PE**	S/.	0.70	0.00%	0.00%	-5.41%	3.24%	100.00%	2,071	0.83	7.99	3.72	325.82	Industrial	1.72%
- CPACASC1 PE**	S/.	5.85	0.00%	-0.85%	5.41%	-9.30%	100.00%	39,583	0.53	6.44	32.50	738.69	Industrial	2.38%
▼ CVERDEC1 PE**	US\$	19.01	-2.51%	-4.47%	-10.12%	-6.97%	95.00%	17,475	0.90	2.25	144.88	6,654.56	Mining	5.25%
- ENGEPEC1 PE**	S/.	2.46	0.00%	0.41%	-3.91%	30.16%	85.00%	25,363	0.69	4.32	10.95	2,065.89	Public Services	1.44%
- ENDISPC1**	S/.	6.20	0.00%	-0.16%	5.80%	20.34%	80.00%	1,339	0.64	0.00	10.11	1,171.23	Public Services	0.98%
▲ FERREY1 PE**	S/.	2.15	0.47%	0.00%	-5.29%	-8.74%	100.00%	18,622	0.85	8.18	7.52	620.57	Diverse	4.90%
▼ GRAMONC1 PE**	S/.	1.82	-1.09%	-2.15%	-8.08%	-8.54%	90.00%	4,252	0.85	0.00	-	392.74	Diverse	4.05%
▲ IFS PE**	US\$	41.45	0.97%	3.06%	-15.24%	2.49%	100.00%	93,476	0.93	4.22	13.41	4,736.11	Diverse	7.22%
- INRETC1 PE**	US\$	35.50	0.00%	-4.83%	-8.97%	26.56%	95.00%	124,463	1.00	0.96	38.01	3,649.66	Diverse	5.28%
- LUSURC1 PE**	S/.	14.32	0.00%	0.00%	2.29%	34.79%	90.00%	12,991	0.44	0.00	12.00	2,062.88	Public Services	1.81%
- MINSUR1 PE**	S/.	1.55	0.00%	0.00%	-3.13%	17.42%	75.00%	1,146	1.44	0.00	-	1,321.97	Mining	3.09%
- PML PE**	US\$	0.11	0.00%	-8.33%	-6.78%	-37.14%	30.00%	24,689	1.48	0.00	-	29.02	Mining	2.12%
▲ RELAPAC1 PE**	S/.	0.11	2.75%	-1.75%	-5.08%	-11.11%	100.00%	1,481	0.71	0.00	-	275.64	Industrial	2.12%
▼ SCCO PE**	US\$	32.17	-3.48%	-1.87%	-12.71%	10.40%	95.00%	52,187	1.50	6.35	17.11	24,869.30	Mining	2.14%
▼ SIDERC1 PE**	S/.	0.61	-1.61%	-1.61%	-8.96%	26.29%	100.00%	12,826	1.42	16.74	6.63	221.59	Industrial	1.43%
▼ TV PE**	US\$	0.15	-1.94%	-6.17%	-24.00%	-48.82%	95.00%	35,832	1.79	0.00	-	123.75	Mining	2.93%
- UNACEMC1 PE**	S/.	2.30	0.00%	-2.13%	-5.74%	-10.64%	90.00%	6,865,613	0.57	0.00	12.31	1,237.08	Industrial	3.00%
▲ VOLCABC1 PE**	S/.	0.48	0.42%	1.05%	-9.43%	-32.39%	100.00%	196,760	1.46	2.84	-	2,038.18	Mining	5.90%
▼ NEXAPEC1 PE**	S/.	3.09	-0.64%	-3.44%	-4.92%	-15.83%	85.00%	2,742	1.10	16.79	16.17	1,209.34	Mining	1.56%

Quantity of shares: 26
 Source: Bloomberg, Económica
 * Bloomberg Industry Classification System
 ** PER is used in the stock market and original currency of the instrument
 *Legend: Variation 1D: 1 Day; 5D: 5 Days; 1M: 1 Month; YTD: Var.% 12/31/18 to date

Sectorial Indices

	Close	1D*	5D*	30D*	YTD*	Beta
▲ Mining Index	280.76	0.03%	-0.44%	-5.91%	-1.43%	1.63
▲ Consumer Index	1,129.33	-0.46%	-3.41%	-4.50%	12.30%	0.35
▼ Industrial Index	209.05	-0.03%	-1.05%	-3.83%	-7.87%	0.52
▼ Banking and Financial Index	1,166.65	-2.79%	-1.49%	-9.36%	-2.78%	1.05
▼ Construction Index	228.39	-0.33%	-1.58%	-3.15%	-7.11%	0.44
- Services Index	503.50	0.00%	-0.42%	1.54%	26.63%	0.19
▲ Juniors Index	20.26	0.20%	-0.54%	0.25%	-31.18%	0.25
- Electric Index	491.54	0.00%	-0.42%	1.54%	26.63%	0.19

*Legend: Variation 1D: 1 Day; 5D: 5 Days; 1M: 1 Month; YTD: Var.% 12/31/18 to date



Source: Bloomberg

Capital Market Laboratory Coordinator: Economist Bruno Bellido Anicama
 Collaboration: Juan Carlos Figueroa, Pablo Llanos, Abril Retamozo y Marcia Rojas.
 e-mail: pulsobursatil@ulima.edu.pe
 facebook: www.facebook.com/pulsobursatil.ul
 Phone number : 4376767 Annex: 35340

The content of this document is just for informational purposes. The information and opinions expressed should not be consider as recommendations for future decisions. Under any circumstances, the Capital Market Laboratory of University of Lima will be responsible for the use of the statements in this document.

PULSO BURSÁTIL

SOVEREIGN RATING

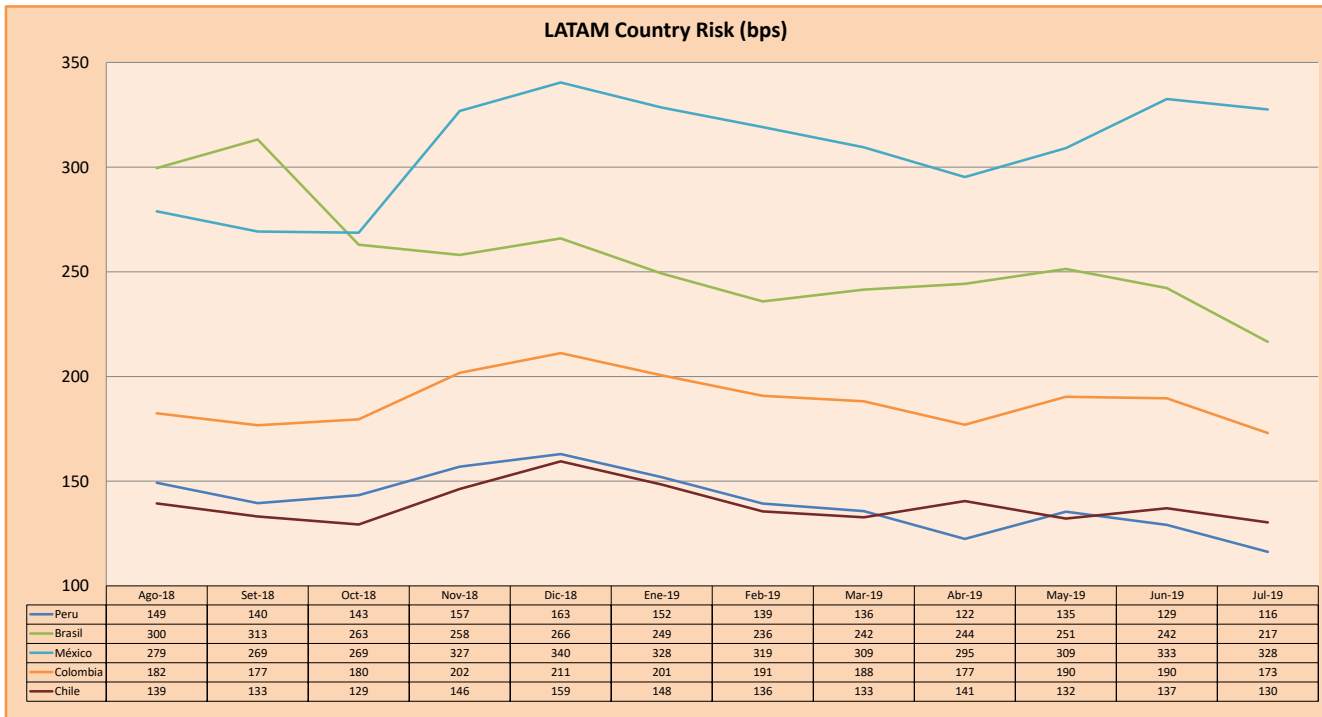
RISK RATINGS

Moody's	S&P	Fitch	
Aaa	AAA	AAA	Prime
Aa1	AA+	AA+	High credit quality
Aa2	AA	AA	
Aa3	AA-	AA-	
A1	A+	A+	Medium-high grade, with low credit risk
A2	A	A	
A3	A-	A-	
Baa1	BBB+	BBB+	Moderate Credit Risk
Baa2	BBB	BBB	
Baa3	BBB-	BBB-	
Ba1	BB+	BB+	It has speculative elements and it is subject to substantial credit risk
Ba2	BB	BB	
Ba3	BB-	BB-	
B1	B+	B+	It is considered speculative and it has high credit risk
B2	B	B	
B3	B-	B-	
Caa1	CCC+		Bad credit conditions and it is subject to high credit risk
Caa2	CCC		
Caa3	CCC-	CCC	
Ca	C		Very close to default or in default
		DDD	
C	D	DD D	

Source: Bloomberg

Latin America Credit Rating			
Clasificadora de riesgo			
Country	Moody's	Fitch	S&P
Peru	A3	BBB+	BBB+
Mexico	A3	BBB	BBB+
Venezuela	C	WD	SD
Brazil	Ba2	BB-	BB-
Colombia	Baa2	BBB	BBB-
Chile	A1	A	A+
Argentina	B2	B	B
Panama	Baa1	BBB	BBB+

Source: Bloomberg



Source: BCRP

Capital Market Laboratory Coordinator: Economist Bruno Bellido Anicama
Support: Juan Carlos Figueroa, Pablo Llanos, Abril Retamozo y Marcia Rojas.
e-mail: pulsobursatil@ulima.edu.pe
facebook: www.facebook.com/pulsobursatil.ul
Phone number : 4376767 Annex: 35340

The content of this document is just for informational purposes. The information and opinions expressed should not be consider as recommendations for future decisions. Under any circumstances, the Capital Market Laboratory of University of Lima will be responsible for the use of the statements in this document.