



PULSO BURSÁTIL

Lima, november 5, 2019

MILA

Main Indexes	Close	1 D	5 D	1 M	YTD	Cap. Burs. (US\$ bill)
▼ IPSA (Chile)	4,730.12	-1.49%	-4.32%	-6.15%	-7.35%	131.72
▼ IGPA (Chile)	23,737.58	-1.53%	-4.62%	-6.55%	-8.53%	164.71
▲ IGBC (Colombia)	13,471.44	0.77%	2.19%	4.06%	20.88%	107.20
▲ COLCAP (Colombia)	1,655.26	0.57%	2.05%	3.91%	24.84%	104.94
▼ S&P/BVL (Perú)*	20,067.57	-0.06%	1.76%	4.14%	3.71%	93.06
▼ S&P/BVL SEL (Perú)	518.09	-0.69%	0.77%	3.26%	1.12%	73.61
▲ S&P/BVL LIMA 25	24,940.81	0.01%	0.38%	2.26%	-5.91%	87.74
▲ IPC (México)	43,637.39	-0.46%	-0.54%	0.45%	4.74%	286.20
▲ S&P MILA 40	606.14	0.96%	-0.25%	-0.57%	-0.41%	254.80

Equity

Largest gains	Exchange	Amt.	Price	▲%	Largest losses	Exchange	Amt.	Price	▼%
POMALCC1	Lima	PEN	0.10	11.11	HABITAT	Santia.	CLP	739.98	-7.50
TV	Lima	USD	0.16	6.00	IAM	Santia.	CLP	812.00	-7.20
QQQQ	Lima	USD	202.00	2.86	SOCOVESA	Santia.	CLP	317.46	-6.63
MINSURI1	Lima	PEN	1.53	2.68	PROVIDA	Santia.	CLP	2690.00	-6.56

Per Turnover	Exchange	Amount (US\$)	Per Volume	Exchange	Volume
SQM-B	Santia.	20,591,516	BSANTANDER	Santia.	257,334,360
FALABELLA	Santia.	18,943,434	VAPORES	Santia.	127,069,533
BSANTANDER	Santia.	15,759,532	CHILE	Santia.	110,585,246
	Santia.	13,923,874	ESVAL-C	Santia.	58,000,000
CMPC	Santia.	10,544,572	ORO BLANCO	Santia.	42,126,142

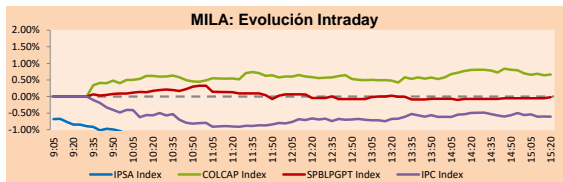
MILA

Peru: The General BVL index ended today's session with a negative result of -0.06%. The index maintains a positive trend in local currency of + 3.71%, while the adjusted yield in dollars amounts to + 4.72%. Then, the S&P / BVL Peru SEL varied by -0.09%, while the S & P / BVL LIMA 25 varied by + 0.01%. The PEN spot reached S / 3.3370. Headline: BCR: Economy would have grown in September between 2.5% and 3%, lower than expected.

Chile: The IPSA index closed today with a negative yield of -1.49%. The sectors with the worst results were Real Estate (-4.97%) and Information Technology (-4.03%). On the other hand, the values with the worst results of the day were Inversiones Aguas Metropolitan (-7.20%) and Ripley Corporación SA (-5.59%). Headline: IPSA falls to a minimum of nine weeks due to uncertainty on the national stage.

Colombia: The COLCAP index closed today with a positive yield of + 1.20%. The sectors with the best results were Public Services (+ 2.04%) and Energy (+ 1.88%). On the other hand, the values with the best results of the day were BanColombia SA (+ 4.39%) and Interconecne Eléctrica SA (+ 3.96%). Headline: Claro announces its participation in the "largest auction" of the spectrum in Colombia.

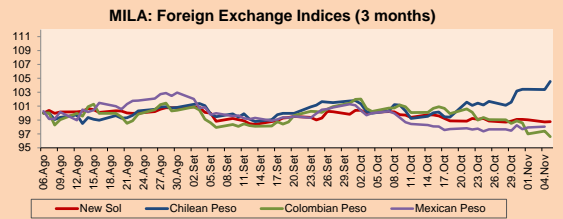
Mexico: The MEXBOL index closed today with a negative return of -0.47%. The sectors with the worst results were Communication Services (-1.08%) and Non-Basic Consumer Products (-0.70%). On the other hand, the values with the worst yields were Gruma SAB de CV (-2.66%) and Banco Santander México SA (-2.17%). Headline: Inflation in Mexico would have remained stable and reinforces expectations of a new rate cut.



Source: Bloomberg

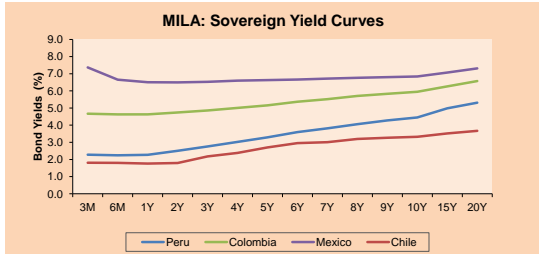
Currency	Price	1D*	5D*	30 D*	YTD*
▲ New Sol (PEN)	3.3372	0.12%	0.02%	-1.25%	-0.94%
▲ Chilean Peso (CLP)	748.50	1.13%	2.93%	4.57%	7.92%
▼ Colombian Peso (COP)	3,311.93	-0.82%	-1.93%	-3.61%	1.91%
▲ Mexican Peso (MXN)	19.19	0.11%	0.40%	-1.65%	-2.33%

*Legend: Variation 1D: 1 day, 5D: 5 days, 1M: 1 Month, YTD: Var%12/31/18 to date

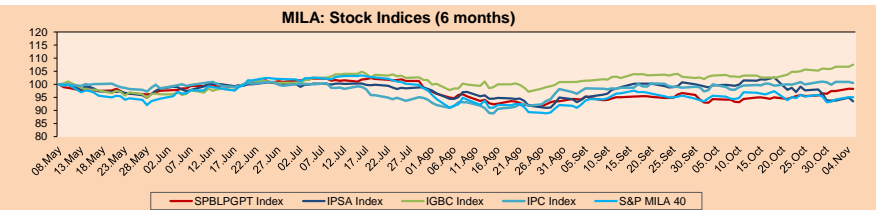


Base: 06/08/19=100
Source: Bloomberg

Fixed Income	Bid Yield (%)	Ask Yield (%)	Duration
PERU 4.125 08/25/2027	USD 111.185	2.56 2.52	6.70
PERU 7.35 07/21/25	USD 126.179	2.44 2.39	4.75
PERU 8.75 11/21/33	USD 163.423	3.14 3.12	9.33
PERU 6.55 03/14/37	USD 143.873	3.24 3.22	11.23
PERU 5.625 11/18/2050	USD 143.35	3.37 3.36	17.33
CHILE 2.25 10/30/22	USD 100.146	2.24 2.16	2.87
CHILE 3.875 08/05/20	USD 101.297	2.27 1.95	0.73
CHILE 3.625 10/30/2042	USD 107.254	3.19 3.17	16.09
COLOM 11.75 02/25/20	USD 103.024	1.91 1.20	0.30
COLOM 11.85 03/09/28	USD 161.587	3.36 3.30	6.01
COLOM 10.375 01/28/33	USD 160.955	4.36 4.21	8.41
COLOM 7.375 09/18/37	USD 140.199	4.18 4.15	11.23
MEX 4 10/02/23	USD 105.855	2.46 2.38	3.61
MEX5.55 01/45	USD 120.377	4.236 4.219	14.61



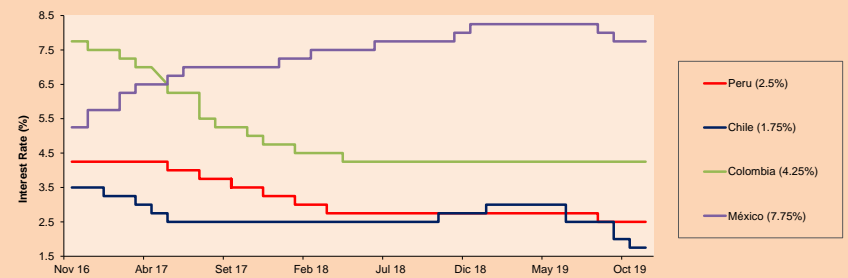
Source: Bloomberg



Base: 09/05/19=100
Source: Bloomberg

ETFs	Curr.	Close	1D	5D	30 D	YTD	Exchange
▼ iShares MSCI All Peru Capped Index Fund	USD	35.56	-0.89%	0.88%	3.55%	2.03%	NYSE Arca
▲ Global X MSCI Colombia	USD	13.71	0.26%	2.77%	6.28%	25.18%	NYSE Arca
▲ iShares MSCI Mexico Capped	USD	44.59	-0.98%	-0.85%	2.18%	-10.66%	Cboe BZX
▲ iShares MSCI Emerging Markets	USD	43.9	0.57%	2.74%	7.15%	13.25%	NYSE Arca
▲ Vanguard FTSE Emerging Markets	USD	43	0.44%	2.33%	6.28%	15.30%	NYSE Arca
▲ iShares Core MSCI Emerging Markets	USD	52.71	0.53%	2.71%	7.09%	12.91%	NYSE Arca
▲ iShares JP Morgan Emerging Markets Bonds	USD	59.43	0.47%	1.71%	4.17%	7.54%	Cboe BZX
▼ Morgan Stanley Emerging Markets Domestic	USD	6.98	-0.14%	0.00%	4.33%	22.94%	New York

MILA: Policy Rate



Source: Bloomberg

Capital Market Laboratory Coodinator: Economist Bruno Bellido Anicama
Collaboration: Juan Carlos Figueroa, Alonso Butters, Jeanpire León y Manuel Muñoz Najar
e-mail: pulsobursatil@ulima.edu.pe
facebook: www.facebook.com/pulsobursatil.ul
Phone number : 4376767 Annex: 35340

PULSO BURSÁTIL

WORLD

Main Indices	Close	1 D*	5 D*	1 M*	YTD*	Market Cap. (US\$ Mill.)
▲ Dow Jones (USA)	27,492.63	0.11%	-1.56%	3.46%	17.86%	7,739,370
▼ Standard & Poor's 500 (USA)	3,074.67	-0.12%	1.24%	4.16%	22.65%	26,537,095
▲ NASDAQ Composite (USA)	8,434.68	0.02%	1.91%	5.66%	27.12%	13,097,451
▲ Stoxx EUROPE 600 (Europe)	404.23	0.20%	1.47%	6.31%	19.72%	9,826,968
▲ DAX (Germany)	13,148.50	0.09%	1.61%	9.45%	24.52%	1,105,017
▲ FTSE 100 (United Kingdom)	7,388.08	0.25%	1.12%	3.25%	9.81%	1,527,775
▲ CAC 40 (France)	5,846.89	0.39%	1.86%	6.53%	23.59%	1,620,040
▼ IBEX 35 (Spain)	9,407.90	-0.09%	0.08%	4.98%	10.16%	529,291
▲ MSCI AC Asia Pacific Index	164.84	0.72%	1.42%	5.98%	12.36%	18,932,086
▲ HANG SENG (Hong Kong)	27,883.40	0.49%	3.35%	7.21%	7.11%	2,539,740
▲ SHANGHAI SEC Comp. (China)	2,991.56	0.54%	1.27%	2.97%	19.88%	4,757,987
▲ NIKKEI 225 (Japan)	23,251.99	1.76%	1.68%	8.60%	16.17%	3,500,531
▼ BOVESPA (Brazil)	108,402.90	-0.35%	0.79%	5.71%	23.34%	824,978
▼ Merval (Argentina)	36,869.96	-1.10%	13.29%	15.88%	21.71%	21,181

*Legend: Variation 1D: 1 Day; 5D: 5 Days; 1M: 1 Month; YTD: Var.% 12/31/18 to date

Equity

Alemania (Acciones del DAX Index)

Largest gains	Curr.	Price	▲%	Exchange	Largest losses	Curr.	Price	▼%	Exchange
CON GY	EUR	130.26	2.13	Xetra	VNA GY	EUR	46.75	-2.44	Xetra
IFX GY	EUR	18.678	1.74	Xetra	MTX GY	EUR	235.1	-1.80	Xetra
BMW GY	EUR	72.8	1.68	Xetra	ADS GY	EUR	281.35	-1.66	Xetra
FME GY	EUR	67.78	1.53	Xetra	DB1 GY	EUR	135.15	-1.46	Xetra

Europe (Stocks from STOXX EUROPE 600)

Largest gains	Curr.	Price	▲%	Exchange	Largest losses	Curr.	Price	▼%	Exchange
ABF LN	Gbp	2374	5.56	Londres	SGRE SQ	EUR	11.735	-8.68	Soc Bol SIBE
RR/ LN	Gbp	769	4.46	Londres	EVT GY	EUR	19.725	-5.85	Xetra
GLB ID	EUR	10.57	4.34	EN Dublin	AF FP	EUR	9.97	-5.68	EN Paris
SDR LN	Gbp	3253	4.26	Londres	COLOB DC	DKK	794.6	-3.89	Copenhagen

Global Overview:

United States:

The US market closed the day today with mixed results, since its main indexes, DJI and S&P 500 ended with variations of + 0.09% and -0.13% respectively. On the other hand, China is pushing US President Donald Trump to eliminate tariffs on Chinese products included in September as the first phase of the trade agreement. This agreement could be signed this month by Trump and Chinese President Xi Jinping and the agreement is expected to include the promise of the United States to eliminate about 156 billion dollars in Chinese imports. In other news, the foreign assets control office of the US Treasury Department announced new sanctions against officials of the Nicolás Maduro regime. In addition, it identified five current officials of the Government of Venezuela in accordance with the Executive Order. According to Treasury Secretary Steven T. Mnuchin, "The Treasury is identifying high-level officials acting on behalf of the oppressive regime of former Venezuelan President Nicolás Maduro, who continues to participate in atrocious levels of corruption and human rights abuses". Finally, the US reduced its purchases of Spanish products by 18.5% in September compared to the same month of 2018.

Europe:

The European market ended the day with positive results because investors expect a possible reversal of trade tariffs between the United States and China and monitor the economic evolution of the world. The Chinese sector report also revealed that the sector has fallen to a minimum in recent months, while business confidence has fallen to a minimum of 15 months. The main indexes in Europe had the following results Euro Stoxx 50 up +0.31%, FTSE100 up +0.25% and DAX +0.09%. The Chinese currency, yuan, surpassed the symbolic mark of 7 yuan per dollar for the first time since August for measures, made by investors, optimistic about the prospect of a trade agreement. In other corporate news, the companies Fiat Chrysler and Peugeot pledged to close factories due to a possible merger due to high pressures, as the combined group has a production capacity of almost 6 million in a decelerating car market. The European company Pandora, related to the jewelry industry, presents obstacles to announce in production spending in the US and Chinese markets. The companies with the best returns of the day were Wirecard AG (+3.03%) and Continental AG (+2.13%) by the German DAX index.

Asia:

The Chinese market closed with the CSI800 index "Blue Chip" rose + 0.6%, due to the reduction of the medium-term loan rate controlled by the country's central bank, to boost domestic demand, after the last weeks, negative data will be reported, such as the investor confidence index, which has fallen to its lowest level in the last 15 months. In Hong Kong, the Hang Seng index rose +0.49%, due to the expectation that island authorities will approve additional measures to stimulate the economy. In Japan, the Nikkei index shot up + 1.8%, due to the good performance of the construction machinery sector, such as Komatsu (+5.4%) and Hitachi Construction (+5.1%), and SoftBank Group (+2.4%), due to the latter company announced that it will recognize earnings of \$2.5 billion related to its investments in Alibaba Group Holding. Finally, in Australia, the S & P / ASX 200 index rose + 0.2% due to the upward performance of energy sector shares, such as Woodside Petroleum (+1.2%) or Search (+0.7%), in addition, the main banks of the country saw their prices rise, because the central bank is expected to apply new stimulus measures.

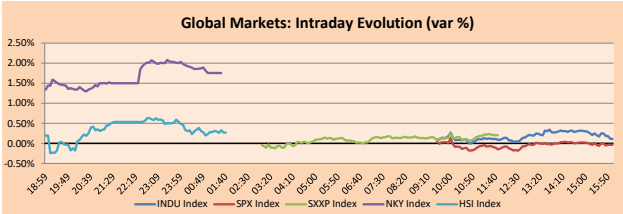
ETFs

ETFs	Curr.	Close	1D	5D	30 D	YTD	Exchange
SPDR S&P 500 ETF TRUST	USD	307.04	-0.11%	1.28%	4.31%	24.57%	NYSE Arca
ISHARES MSCI EMERGING MARKET	USD	43.90	0.57%	2.74%	7.15%	13.25%	NYSE Arca
ISHARES IBOXX HIGH YLD CORP	USD	86.91	-0.10%	0.06%	0.98%	11.91%	NYSE Arca
FINANCIAL SELECT SECTOR SPDR	USD	29.49	0.41%	2.18%	7.39%	25.71%	NYSE Arca
VANECK GOLD MINERS	USD	26.97	-2.00%	-0.88%	-3.23%	27.88%	NYSE Arca
ISHARES RUSSELL 2000 ETF	USD	159.11	0.10%	1.44%	6.68%	19.98%	NYSE Arca
SPDR GOLD SHARES	USD	139.85	-1.62%	-0.29%	-1.44%	15.34%	NYSE Arca
ISHARES 20+ YEAR TREASURY BO	USD	137.15	-1.12%	0.03%	-5.89%	15.14%	NASDAQ GM
INVESCO QQQ TRUST SERIES 1	USD	200.21	0.05%	2.13%	6.04%	30.57%	NASDAQ GM
ISHARES NASDAQ BIOTECHNOLOGY	USD	109.52	0.02%	1.92%	10.04%	13.74%	NASDAQ GM
ENERGY SELECT SECTOR SPDR	USD	61.43	0.36%	3.38%	7.06%	9.94%	NYSE Arca
PROSHARES ULTRA VIX ST FUTUR	USD	18.77	2.74%	-5.35%	-23.04%	-77.03%	NYSE Arca
UNITED STATES OIL FUND LP	USD	11.93	1.02%	3.02%	8.06%	23.50%	NYSE Arca
ISHARES MSCI BRAZIL ETF	USD	45.25	0.51%	1.41%	7.46%	19.96%	NYSE Arca
SPDR S&P OIL & GAS EXP & PR	USD	22.94	0.13%	4.04%	8.00%	-12.72%	NYSE Arca
UTILITIES SELECT SECTOR SPDR	USD	62.62	-1.03%	-1.14%	-3.32%	21.09%	NYSE Arca
ISHARES US REAL ESTATE ETF	USD	91.94	-1.83%	-2.09%	-1.76%	25.40%	NYSE Arca
SPDR S&P BIOTECH ETF	USD	83.14	0.00%	1.12%	8.23%	15.38%	NYSE Arca
ISHARES IBOXX INVESTMENT GRA	USD	126.16	-0.58%	0.01%	-1.38%	15.10%	NYSE Arca
ISHARES JP MORGAN USD EMERGI	USD	112.54	-0.72%	-0.02%	-0.86%	12.59%	NASDAQ GM
REAL ESTATE SELECT SECT SPDR	USD	38.12	-1.73%	-2.68%	-3.25%	25.49%	NYSE Arca
ISHARES CHINA LARGE-CAP ETF	USD	42.77	0.61%	3.16%	6.29%	10.55%	NYSE Arca
CONSUMER STAPLES SPDR	USD	60.74	0.30%	-0.38%	-1.07%	21.90%	NYSE Arca
VANECK JR GOLD MINERS	USD	37.75	-2.66%	-0.03%	-1.28%	24.92%	NYSE Arca
SPDR BBG BARC HIGH YIELD BND	USD	108.32	-0.08%	0.10%	1.03%	12.60%	NYSE Arca
VANGUARD REAL ESTATE ETF	USD	92.03	-1.70%	-2.23%	-1.50%	26.50%	NYSE Arca
GRAYSCALE BITCOIN TRUST BTC	USD	11.65	-1.44%	6.01%	19.00%	193.82%	OTC US

USA Treasury Bonds Yield Curve (%)



Source: Bloomberg

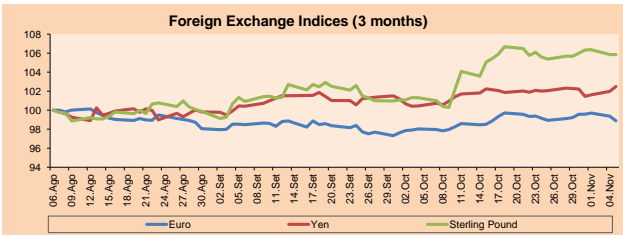


Source: Bloomberg

Currency

Currency	Price	1 D*	5 D*	1 M*	YTD*
▼ Euro	1.1074	-0.49%	-0.34%	0.87%	-3.43%
▲ Yen	109.1400	0.52%	0.23%	2.06%	-0.50%
- Sterling Pound	1.2884	0.00%	0.17%	4.48%	1.02%
▼ Yuan	7.0097	-0.29%	-0.79%	-1.94%	1.91%
▼ Hong Kong Dollar	7.8310	-0.08%	-0.10%	-0.11%	-0.01%
▼ Brazilian Real	3.9926	-0.61%	-0.17%	-1.57%	3.05%
▼ Argentine Peso	59.6549	-0.08%	0.34%	3.33%	58.37%

*Legend: Variation 1D: 1 Day; 5D: 5 Days; 1M: 1 Month; YTD: Var.% 12/31/18 to date



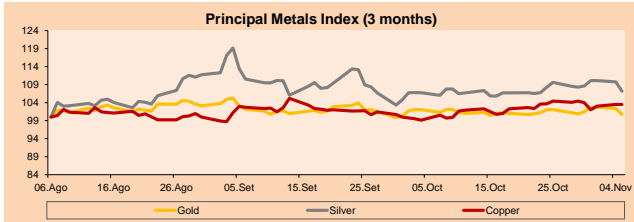
Base: 06/08/19=100

Source: Bloomberg

Commodities

Commodities	Close	1 D*	5 D*	1 M*	YTD*
▼ Oro (US\$ Oz. T) (LME)	1,484.98	-1.64%	-0.18%	-1.31%	15.79%
▼ Plata (US\$ Oz. T) (LME)	17.63	-2.38%	-1.04%	0.40%	13.75%
▼ Cobres (US\$ TM) (LME)	5,853.75	0.00%	-0.89%	-4.38%	-1.60%
▲ Zinc (US\$ TM) (LME)	2,601.00	0.00%	0.54%	11.32%	3.28%
▲ Petróleo WTI (US\$ Barril) (NYM)	57.19	1.15%	2.97%	8.44%	18.21%
▼ Estano (US\$ TM) (LME)	16,398.00	0.00%	-2.54%	-0.30%	-15.99%
▼ Plomo (US\$ TM) (LME)	2,171.50	0.00%	-5.02%	0.42%	8.20%
▲ Azúcar #11 (US\$ Libra) (NYB-ICE)	12.71	1.60%	3.00%	-0.39%	-3.35%
▼ Cacao (US\$ TM) (NYB-ICE)	2,500.00	-0.24%	-0.95%	0.36%	1.13%
▲ Café Arabica (US\$ TM) (NYB-ICE)	105.80	2.07%	6.92%	6.87%	-7.48%

*Legend: Variación 1D: 1 Día; 5D: 5 Días; 1M: 1 Mes; YTD: Var.% 31/12/17 a la fecha



Base: 06/08/19=100

Source: Bloomberg

Capital Market Laboratory Coordinator: Economist Bruno Bellido Anicama
Collaboration: Juan Carlos Figueroa, Alonso Butters, Jeanpierre León y Manuel Muñoz Najar
e-mail: pulso_bursatil@ulima.edu.pe
facebook: www.facebook.com/pulso_bursatil
Phone number: 4376767 Annex: 35340

The content of this document is just for informational purposes. The information and opinions expressed should not be considered as recommendations for future decisions. Under any circumstances, the Capital Market Laboratory of University of Lima will be responsible for the use of the statements in this document.

PULSO BURSÁTIL

LIMA

Stocks

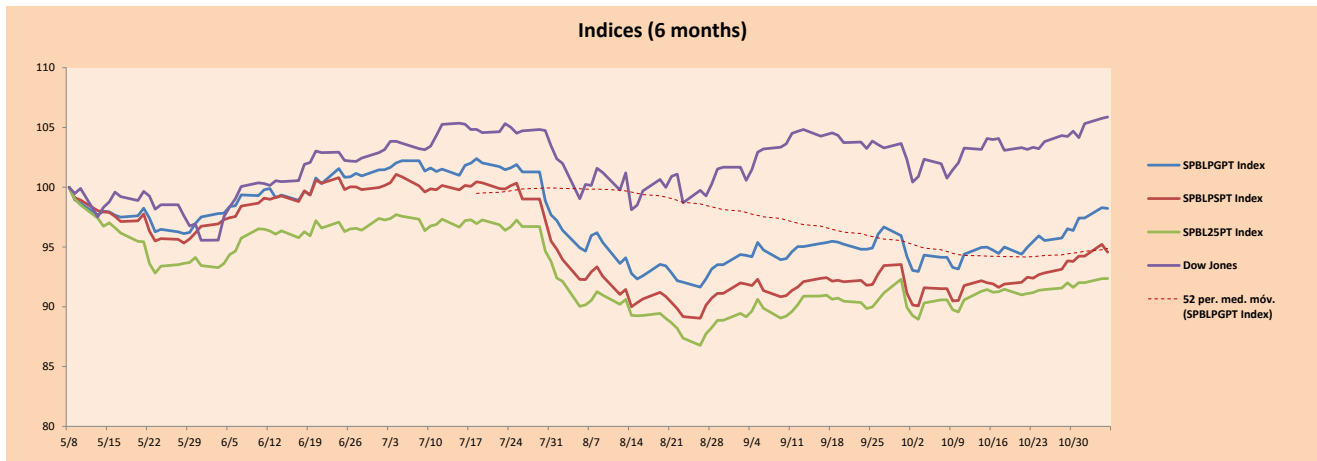
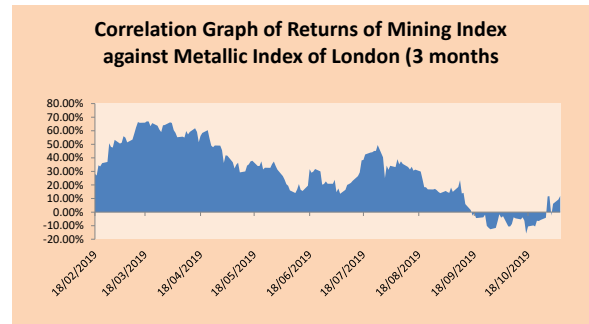
Ticker	Currency	Price	1D*	5D*	30D*	YTD*	Frequency	Volume (US\$)	Beta	Dividend Yield (%)	Price Earning	Market Cap. (M US\$)	Economic Sector*	Index Weight
- ALICORC1 PE**	S/.	9.20	0.00%	0.00%	2.11%	-5.48%	100.00%	977,430	0.59	2.61	17.69	2,348.82	Industrial	3.53%
- ATACOB1 PE**	S/.	0.19	0.00%	0.00%	0.00%	-42.55%	52.63%	2,994	#N/A N/A	0.00	5.04	159.30	Mining	1.02%
▲ BACKUS1 PE**	S/.	24.35	2.31%	1.46%	2.74%	24.72%	94.74%	3,638,667	0.34	6.08	7.94	9,144.27	Industrial	0.82%
▼ BAP PE**	US\$	212.45	-0.76%	-0.26%	3.52%	-0.40%	100.00%	95,167	1.27	3.96	-	16,945.32	Diverse	5.82%
- BVN PE**	US\$	15.74	0.06%	8.10%	5.07%	-1.88%	94.74%	60,796	1.52	0.73	-	4,338.49	Mining	5.88%
- CASAGRC1 PE**	S/.	3.00	0.00%	0.67%	-3.85%	-25.82%	89.47%	1,798	0.50	0.42	17.61	75.72	Agricultural	1.31%
▼ BBVAC1 PE**	S/.	3.48	-0.57%	-0.57%	7.08%	0.29%	94.74%	3,548	0.55	3.96	12.77	6,137.04	Finance	2.85%
- CORAREI1 PE**	S/.	0.82	0.00%	2.50%	22.39%	23.49%	100.00%	14,356	0.91	7.48	3.99	337.25	Industrial	1.72%
▼ CPACASC1 PE**	S/.	6.65	-1.63%	-1.19%	15.65%	3.10%	94.74%	2,756,858	0.67	5.67	36.94	849.72	Industrial	2.38%
▲ CVERDEC1 PE**	US\$	18.15	0.89%	0.89%	3.71%	-11.18%	94.74%	22,175	0.82	2.36	-	6,353.52	Mining	5.25%
- ENGEPEC1 PE**	S/.	2.45	0.00%	1.24%	-1.21%	31.02%	94.74%	2,202	0.73	3.49	13.70	2,084.06	Public Services	1.44%
▲ ENDISPC1**	S/.	7.20	0.70%	0.70%	11.46%	40.30%	73.68%	27,468	0.63	3.15	11.28	1,377.70	Public Services	0.98%
▼ FERREYC1 PE**	S/.	2.18	-1.36%	5.31%	9.00%	-7.47%	100.00%	82,648	0.87	8.06	8.19	637.36	Diverse	4.90%
- GRAMONC1 PE**	S/.	1.58	0.00%	0.00%	3.27%	-20.60%	94.74%	4,119	0.90	0.00	-	412.81	Diverse	4.05%
- IFS PE**	US\$	41.50	0.00%	0.61%	6.55%	2.61%	100.00%	274,402	0.90	4.22	11.79	4,791.08	Diverse	7.22%
▼ INRETC1 PE**	US\$	34.60	-0.57%	-2.54%	-4.16%	23.35%	100.00%	145,198	0.70	0.98	28.66	3,557.13	Diverse	5.28%
- LUSURC1 PE**	S/.	23.49	0.00%	-1.92%	-2.13%	124.51%	100.00%	7,433	0.60	3.58	18.81	3,427.57	Public Services	1.81%
▲ MINSUR1 PE**	S/.	1.53	2.68%	5.52%	5.52%	15.91%	57.89%	9,921	1.34	4.95	2.85	1,321.76	Mining	3.09%
- PML PE**	US\$	0.08	0.00%	-5.88%	-15.79%	-54.29%	21.05%	2,339	1.31	0.00	-	21.11	Mining	2.12%
- RELAPAC1 PE**	S/.	0.10	0.00%	0.00%	-4.76%	-20.63%	100.00%	5,599	0.82	0.00	-	249.29	Industrial	2.12%
- SCCO PE**	US\$	37.88	0.37%	4.07%	15.17%	29.99%	94.74%	21,918	1.34	5.40	19.94	29,283.47	Mining	2.14%
▼ SIDERC1 PE**	S/.	0.67	-2.90%	0.00%	21.82%	38.72%	100.00%	25,160	1.40	15.24	7.59	246.53	Industrial	1.43%
▲ TV PE**	US\$	0.16	6.00%	2.58%	-3.64%	-46.46%	78.95%	41,310	1.66	0.00	-	129.45	Mining	2.93%
▼ UNACEMC1 PE**	S/.	2.10	-1.41%	0.00%	3.96%	-17.94%	89.47%	2,205,544	0.57	2.48	11.50	1,144.09	Industrial	3.00%
▲ VOLCABC1 PE**	S/.	0.40	0.25%	-5.71%	-12.00%	-44.23%	100.00%	91,241	1.46	0.00	-	483.74	Mining	5.90%
▼ NEXAPEC1 PE**	S/.	3.42	-2.29%	-4.47%	4.27%	-6.84%	47.37%	4,107,758	1.11	15.17	33.16	1,354.87	Mining	1.56%

Quantity of shares: 26
Source: Bloomberg, Economática
* Bloomberg Industry Classification System
** PER is used in the stock market and original currency of the instrument
*Legend: Variation 1D: 1 Day; 5D: 5 Days; 1M: 1 Month; YTD: Var.% 12/31/18 to date

Sectorial Indices

	Close	1D*	5D*	30D*	YTD*	Beta
▲ Mining Index	292.46	0.45%	5.10%	6.72%	2.68%	1.47
▲ Consumer Index	1,095.49	0.15%	-0.84%	-1.08%	8.94%	0.35
▲ Industrial Index	206.86	-1.14%	1.23%	7.85%	-8.83%	0.58
▼ Banking and Financial Index	1,189.00	-0.56%	-0.13%	2.56%	-0.91%	1.19
▼ Construction Index	223.53	-1.06%	-0.45%	7.54%	-9.09%	0.46
▲ Services Index	624.32	0.31%	-0.51%	2.69%	57.02%	0.19
▲ Juniors Index	17.15	0.18%	7.66%	0.41%	-41.75%	0.29
▲ Electric Index	609.49	0.31%	-0.51%	2.69%	57.02%	0.19

*Legend: Variation 1D: 1 Day; 5D: 5 Days; 1M: 1 Month; YTD: Var.% 12/31/18 to date



Source: Bloomberg

Capital Market Laboratory Coordinador: Economist Bruno Bellido Anicama
Collaboration: Juan Carlos Figueroa, Alonso Butter, Jeanpiere León y Manuel Muñoz Najjar
e-mail: pulsobursatil@ulima.edu.pe
facebook: www.facebook.com/pulsobursatil.ul
Phone number : 4376767 Annex: 35340

The content of this document is just for informational purposes. The information and opinions expressed should not be consider as recommendations for future decisions. Under any circumstances, the Capital Market Laboratory of University of Lima will be responsible for the use of the statements in this document.

PULSO BURSÁTIL

SOVEREIGN RATING

RISK RATINGS

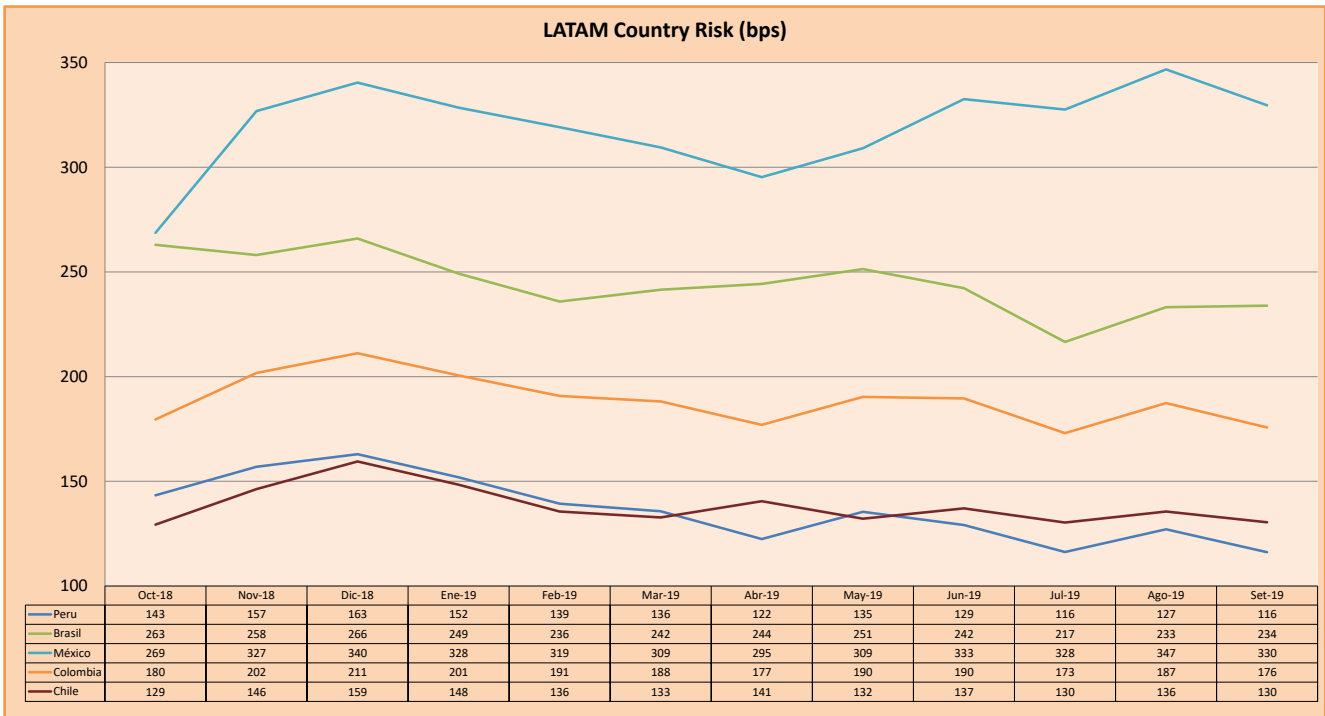
Moody's	S&P	Fitch		
Aaa	AAA	AAA	Prime	
Aa1	AA+	AA+	High credit quality	
Aa2	AA	AA		
Aa3	AA-	AA-		
A1	A+	A+	Medium-high grade, with low credit risk	
A2	A	A		
A3	A-	A-		
Baa1	BBB+	BBB+	Moderate Credit Risk	
Baa2	BBB	BBB		
Baa3	BBB-	BBB-		
Ba1	BB+	BB+	It has speculative elements and it is subject to substantial credit risk	
Ba2	BB	BB		
Ba3	BB-	BB-		
B1	B+	B+	It is considered speculative and it has high credit risk	
B2	B	B		
B3	B-	B-		
Caa1	CCC+	CCC	Bad credit conditions and it is subject to high credit risk	
Caa2	CCC			
Caa3	CCC-			
Ca	C	DDD	Very close to default or in default	
C	D			DD
				D

Source: Bloomberg

Latin America Credit Rating			
Clasificadora de riesgo			
Country	Moody's	Fitch	S&P
Peru	A3	BBB+	BBB+
Mexico	A3	BBB	BBB+
Venezuela	C	WD	SD
Brazil	Ba2	BB-	BB-
Colombia	Baa2	BBB	BBB-
Chile	A1	A	A+
Argentina	Caa2 *	CC	CCC-
Panama	Baa1	BBB	BBB+

Source: Bloomberg

LATAM Country Risk (bps)



Source: BCRP

Capital Market Laboratory Coordinator: Economist Bruno Bellido Anicama
 Support: Juan Carlos Figueroa, Alonso Butters, Jeanpiere León y Manuel Muñoz Najara
 e-mail: pulsobursatil@ulima.edu.pe
 facebook: www.facebook.com/pulsobursatil.ul
 Phone number : 4376767 Annex: 35340

The content of this document is just for informational purposes. The information and opinions expressed should not be considered as recommendations for future decisions. Under any circumstances, the Capital Market Laboratory of University of Lima will be responsible for the use of the statements in this document.