



PULSO BURSÁTIL

Lima, February 13, 2020

MILA

Main Indexes	Close	1 D	5 D	1 M	YTD	Cap. Burs. (US\$ bill)
▼ IPSA (Chile)	4,659.81	-0.17%	-0.85%	-6.03%	-0.22%	119.32
▼ IGPA (Chile)	23,360.48	-0.18%	-0.70%	-5.50%	-0.14%	153.48
▲ COLSC (Colombia)	1,000.68	-0.16%	-0.28%	-0.19%	2.31%	9.70
▲ COLCAP (Colombia)	1,663.07	0.21%	0.55%	0.67%	0.04%	106.07
▼ S&P/BVL (Perú)*	20,008.03	-0.26%	-0.46%	-2.29%	-2.52%	94.37
▲ S&P/BVL SEL (Perú)	524.85	0.07%	-0.85%	-1.21%	-1.24%	73.37
▼ S&P/BVL LIMA 25	25,524.15	-0.27%	-2.03%	-2.17%	-0.89%	87.82
▼ IPC (México)	45,005.12	-0.74%	1.15%	0.35%	3.36%	300.39
▲ S&P MILA 40	576.56	1.12%	-0.47%	-5.45%	-4.39%	243.35

Equity

Largest gains	Exchange	Amt.	Price	▲%	Largest losses	Exchange	Amt.	Price	▼%
GRAMONC1	Lima	PEN	1.80	5.88	TELEFBC1	Lima	PEN	0.98	-5.77
EXITO	Colomb.	COP	14520.00	2.83	ATACOCB1	Lima	PEN	0.17	-4.00
IFS	Lima	USD	42.39	1.63	RIPLEY	Santia.	CLP	341.70	-3.27
PFDAVVNDA	Colomb.	COP	46900.00	1.52	HF	Santia.	CLP	1256.30	-2.59

Per Turnover	Exchange	Amount (US\$)	Per Volume	Exchange	Volume
SQM-B	Santia.	17,111,994	BSANTANDER	Santia.	56,630,381
COPEC	Santia.	12,707,292	CHILE	Santia.	51,157,468
CMPC	Santia.	7,585,309	MASISA	Santia.	50,215,105
	Santia.	6,377,481	VAPORES	Santia.	22,267,422
CONCHATORO	Santia.	5,416,829	PPAVAL	Colomb.	12,318,861

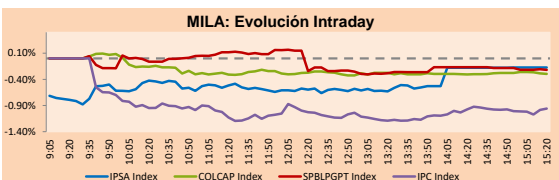
MILA

Peru: The General Index of the BVL ended today's session with a negative result of -0.26%. The index maintains an annual cumulative positive trend of -2.52% in local currency, while the adjusted yield in dollars amounts to -4.41%. Then, the S&P / BVL Peru SEL increased by +0.07% while the S&P / BVL LIMA 25 by -0.27%. The PEN spot reached \$ / 3.3830. Headline: Non-traditional exports from Peru have grown more than 120% in the last decade.

Chile: The IPSA index ended the day with a negative return -0.17%. The sectors most affected in the day were Information Technology (-1.59%) and Public Services (-0.57%). The actions with the worst performance were Ripley Corporación SA (+3.27%) and Inversiones La Construcción SA (-2.12%). Headline: New car sales had the worst start of the year since 2015: they fell 12%.

Colombia: The COLCAP index had a positive result of +0.21%. The sectors most affected in the day were Public Services (+0.68%) and Finance (+0.29%). The values with the lowest results were Almacenes Éxito SA (+2.83%) and Cementos Argos SA (+1.66%). Headline: The Directorate of National Taxes and Customs raised \$ 19.53 billion in taxes.

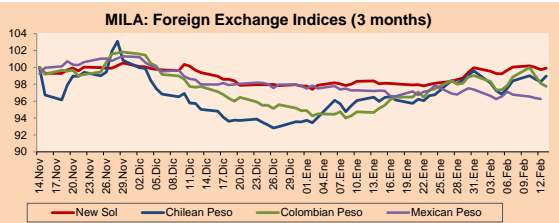
Mexico: The MEXBOL index closed the session with a negative result of -0.74%. The sectors most affected in the day were Materials (-2.29%) and Industrial (-1.80%). The actions with the worst performance were Alpek SAB de CV (-10.46%) and Alfa SAB de CV (-5.71%). Headline: Mexicans reduce their purchases of imported goods by 2.35%.



Source: Bloomberg

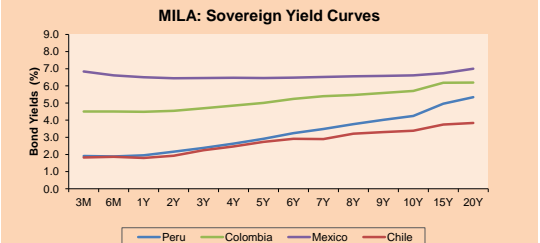
Currency	Price	1D*	5D*	30 D*	YTD*
▲ New Sol (PEN)	3,3841	0.16%	0.25%	1.83%	2.17%
▲ Chilean Peso (CLP)	795.40	0.67%	1.47%	3.11%	5.81%
▼ Colombian Peso (COP)	3,376.52	-0.36%	-0.11%	2.74%	3.03%
▼ Mexican Peso (MXN)	18.60	-0.12%	-0.32%	-0.98%	-1.74%

*Legend: Variation 1D: 1 day; 5D: 5 days; 1M: 1 Month; YTD: Var%12/31/18 to date

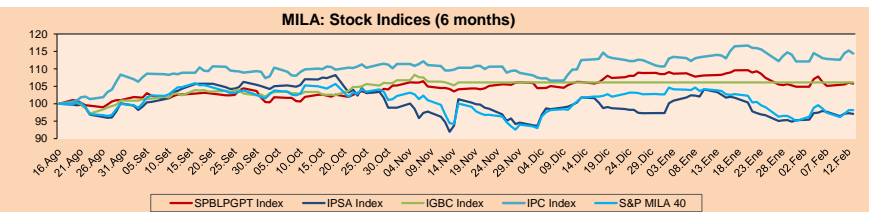


Base: 14/11/19=100
Source: Bloomberg

Fixed Income	Bid Yield (%)	Ask Yield (%)	Duration	
PERU 4.125 08/25/2027	USD 113.831	2.14	2.11	6.45
PERU 7.35 07/21/25	USD 127.394	2.03	1.97	4.63
PERU 8.75 11/21/33	USD 168.7	2.74	2.71	9.39
PERU 6.55 03/14/37	USD 151.025	2.79	2.76	11.09
PERU 5.625 11/18/2050	USD 152.018	3.03	3.01	17.70
CHILE 2.25 10/30/22	USD 101.066	1.90	1.79	2.60
CHILE 3.875 08/05/20	USD 100.971	2.01	1.51	0.46
CHILE 3.625 10/30/2042	USD 110.881	2.98	2.95	15.88
COLOM 11.75 02/25/20	USD 100.242	4.69	-5.96	0.03
COLOM 11.85 03/09/28	USD 163.337	2.99	2.93	5.77
COLOM 10.375 01/28/33	USD 163.818	4.04	3.98	8.50
COLOM 7.375 09/18/37	USD 147.986	3.67	3.64	11.14
MEX 4 10/02/23	USD 106.665	2.12	2.04	3.34
MEX5.55 01/45	USD 128.527	3.785	3.763	14.97

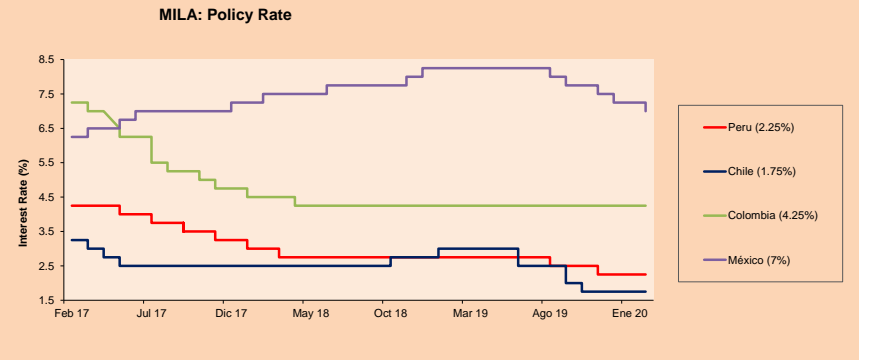


Source: Bloomberg



Base: 19/08/19=100
Source: Bloomberg

ETFs	Curr.	Close	1D	5D	30 D	YTD	Exchange
▼ iShares MSCI All Peru Caped Index Fund	USD	34.67	-0.32%	-0.94%	-5.38%	-6.42%	NYSE Arca
▼ iShares MSCI All Chile Caped Index Fund	USD	31.07	-1.71%	-3.18%	-8.99%	-6.78%	Cboe BZX
▲ Global X MSCI Colombia	USD	13.55	0.44%	1.16%	-2.10%	-2.52%	NYSE Arca
▼ iShares MSCI Mexico Capped	USD	47.55	-0.65%	2.21%	2.43%	5.60%	NYSE Arca
▼ iShares MSCI Emerging Markets	USD	44.18	-1.32%	0.48%	-4.04%	-1.54%	NYSE Arca
▼ Vanguard FTSE Emerging Markets	USD	43.86	-1.06%	0.73%	-3.98%	-1.37%	NYSE Arca
▼ iShares Core MSCI Emerging Markets	USD	52.95	-1.30%	0.42%	-3.99%	-1.51%	NYSE Arca
▼ iShares JP Morgan Emerging Markets Bonds	USD	56.72	-0.89%	-0.18%	-4.56%	-3.31%	Cboe BZX
▼ Morgan Stanley Emerging Markets Domestic	USD	6.9	-0.72%	-0.72%	-1.57%	-1.29%	New York



Source: Bloomberg

Capital Market Laboratory Codinador: Economist Bruno Bellido Anicama
Collaboration: Alonso Butters, Jeanpiere León y Manuel Muñoz Najar
e-mail: pulsobursatil@ulima.edu.pe
facebook: www.facebook.com/pulsobursatil.ul
Phone number : 4376767 Annex: 35340

The content of this document is just for informational purposes. The information and opinions expressed should not be considered as recommendations for future decisions. Under any circumstances, the Capital Market Laboratory of University of Lima will be responsible for the use of the statements in this document.

PULSO BURSÁTIL

LIMA

Stocks

Ticker	Currency	Price	1D*	5D*	30D*	YTD*	Frequency	Volume (US\$)	Beta	Dividend Yield (%)	Price Earning	Market Cap. (M US\$)	Economic Sector*	Index Weight
▼ ALICORC1 PE**	S/.	9.15	-0.16%	0.00%	1.67%	-0.54%	100.00%	422,932	0.62	2.62	17.59	2,304.41	Industrial	3.53%
▼ ATACOCB1 PE**	S/.	0.17	-4.00%	-10.16%	-0.59%	1.82%	80.00%	15,458	#N/A N/A	0.00	-	46.90	Mining	1.02%
▼ BACKUSI1 PE**	S/.	30.00	-2.31%	-6.22%	-7.15%	5.26%	75.00%	2,110	0.39	4.96	8.85	11,969.83	Industrial	0.82%
▲ BAP PE**	US\$	208.00	-1.19%	2.31%	-0.95%	-2.20%	95.00%	6,231	1.27	4.04	-	16,590.39	Diverse	5.82%
▲ BVN PE**	US\$	12.69	0.16%	-1.78%	-7.98%	-17.06%	100.00%	488,800	1.26	0.66	-	3,497.80	Mining	5.88%
- CASAGRC1 PE**	S/.	2.91	0.00%	0.00%	-6.13%	-3.96%	100.00%	1,952	0.82	0.43	17.08	72.43	Agricultural	1.31%
- BBVAC1 PE**	S/.	3.35	0.00%	-2.62%	-2.90%	-2.33%	100.00%	10,345	0.47	4.12	12.79	5,825.91	Finance	2.85%
- CORAREI1 PE**	S/.	0.90	0.00%	-2.17%	-3.23%	-1.10%	95.00%	1,076	0.88	0.00	4.37	359.59	Industrial	1.72%
▼ CPACASC1 PE**	S/.	6.09	-0.98%	-1.46%	0.33%	-0.98%	95.00%	70,268	0.54	5.91	19.65	767.86	Industrial	2.38%
- CVERDEC1 PE**	US\$	18.45	0.00%	-2.64%	-10.00%	-4.40%	85.00%	51,142	1.06	0.00	-	6,458.53	Mining	5.25%
- ENGEPEC1 PE**	S/.	2.39	0.00%	0.00%	3.02%	3.91%	50.00%	97,952	0.55	0.00	12.99	2,004.85	Public Services	1.44%
- ENDISPC1**	S/.	6.65	0.00%	-1.63%	-6.99%	-9.52%	55.00%	31,266	0.45	0.00	10.42	1,254.82	Public Services	0.98%
▼ FERREYC1 PE**	S/.	2.05	-0.97%	-2.38%	-1.91%	-6.39%	100.00%	157,928	0.95	5.00	7.70	591.04	Diverse	4.90%
▲ GRAMONC1 PE**	S/.	1.80	5.88%	0.00%	6.51%	5.88%	100.00%	150,129	1.59	0.00	-	463.77	Diverse	4.05%
▲ IFS PE**	US\$	42.39	1.63%	0.93%	6.21%	3.64%	95.00%	48,837	0.82	4.13	12.47	4,893.83	Diverse	7.22%
▼ INRETC1 PE**	US\$	37.50	-1.06%	-3.23%	-3.10%	4.17%	100.00%	833,620	0.58	0.91	30.90	3,855.27	Diverse	5.28%
- LUSURC1 PE**	S/.	25.50	0.00%	-1.92%	-1.92%	-0.97%	100.00%	242,687	0.92	4.71	20.41	3,669.29	Public Services	1.81%
- MINSUR1 PE**	S/.	1.65	0.00%	0.00%	3.12%	5.77%	100.00%	150,865	1.11	4.59	7.13	1,405.68	Mining	3.09%
- PML PE**	US\$	0.07	0.00%	0.00%	4.62%	21.43%	70.00%	7,240	1.12	0.00	-	17.94	Mining	2.12%
▼ RELAPAC1 PE**	S/.	0.11	0.00%	-6.96%	-14.40%	-13.01%	75.00%	27,725	1.01	0.00	-	263.04	Industrial	2.12%
▼ SCCO PE**	US\$	39.35	-0.08%	-0.76%	-10.85%	-7.26%	85.00%	11,561	1.38	4.07	20.71	30,419.87	Mining	2.14%
- SIDERC1 PE**	S/.	0.89	0.00%	-2.20%	-1.11%	-1.11%	100.00%	14,899	1.35	11.47	10.11	322.94	Industrial	1.43%
▼ TV PE**	US\$	0.14	-2.17%	-3.57%	-27.81%	-21.97%	100.00%	20,696	2.09	0.00	-	108.92	Mining	2.93%
- UNACEMC1 PE**	S/.	1.97	0.00%	-0.51%	0.51%	-1.50%	90.00%	65,482	0.73	0.00	9.99	1,058.39	Industrial	3.00%
▼ VOLCABC1 PE**	S/.	0.51	-1.92%	-8.93%	-3.77%	14.61%	100.00%	159,221	1.77	0.00	-	2,047.90	Mining	5.90%
- NEXAPEC1 PE**	S/.	3.50	0.00%	0.00%	1.45%	1.45%	55.00%	1,594	0.78	0.00	33.42	1,368.00	Mining	1.56%

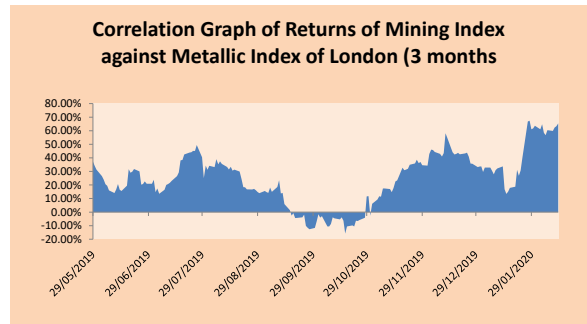
Quantity of shares: 26
Source: Bloomberg, Económática
* Bloomberg Industry Classification System
** PER is used in the stock market and original currency of the instrument
*Legend: Variation 1D: 1 Day; 5D: 5 Days; 1M: 1 Month; YTD: Var.% 12/31/18 to date

Up 3
Down 10
Hold 13

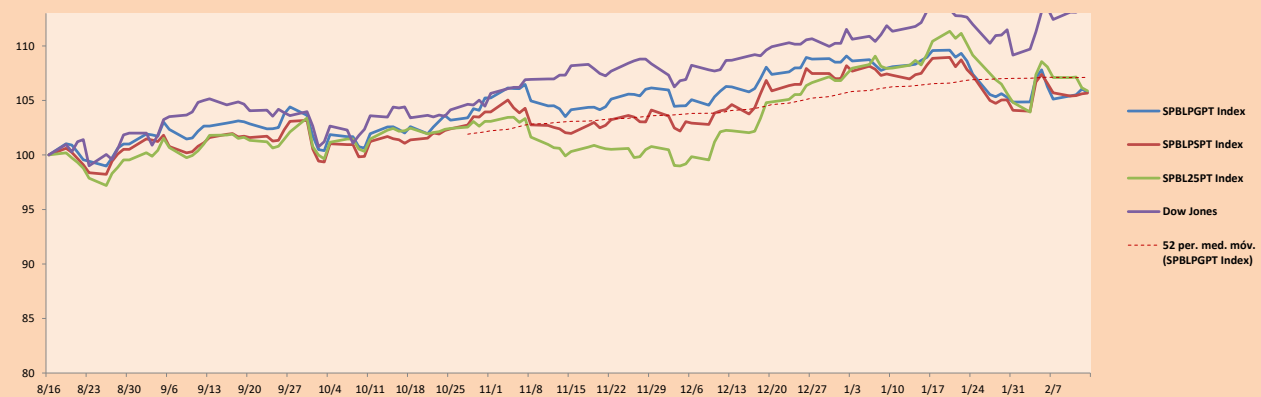
Sectorial Indices

	Close	1D*	5D*	30D*	YTD*	Beta
▲ Mining Index	280.21	0.03%	-1.43%	-7.26%	-8.03%	1.36
▼ Consumer Index	1,177.96	-0.79%	-2.39%	-1.26%	3.31%	0.32
▲ Industrial Index	207.19	0.42%	-1.26%	0.39%	-1.86%	0.72
▼ Banking and Financial Index	1,183.79	-0.80%	2.28%	1.36%	0.35%	1.24
▲ Construction Index	227.40	1.01%	-0.69%	1.64%	0.34%	0.63
▼ Services Index	639.93	-0.21%	-1.51%	-1.94%	-1.78%	0.39
▲ Juniors Index	14.77	0.20%	0.27%	7.11%	2.07%	-0.09
▼ Electric Index	624.73	-0.21%	-1.51%	-1.94%	-1.78%	0.39

*Legend: Variation 1D: 1 Day; 5D: 5 Days; 1M: 1 Month; YTD: Var.% 12/31/19 to date



Indices (6 months)



Base: 16/08/19=100
Source: Bloomberg

Capital Market Laboratory Coodinator: Economist Bruno Bellido Anicama
Collaboration: Alonso Butter, Jeanpierre León y Manuel Muñoz Najar
e-mail: pulsobursatil@ulima.edu.pe
facebook: www.facebook.com/pulsobursatil.ul
Phone number : 4376767 Annex: 35340

The content of this document is just for informational purposes. The information and opinions expressed should not be consider as recommendations for future decisions. Under any circumstances, the Capital Market Laboratory of University of Lima will be responsible for the use of the statements in this document.

PULSO BURSÁTIL

SOVEREIGN RATING

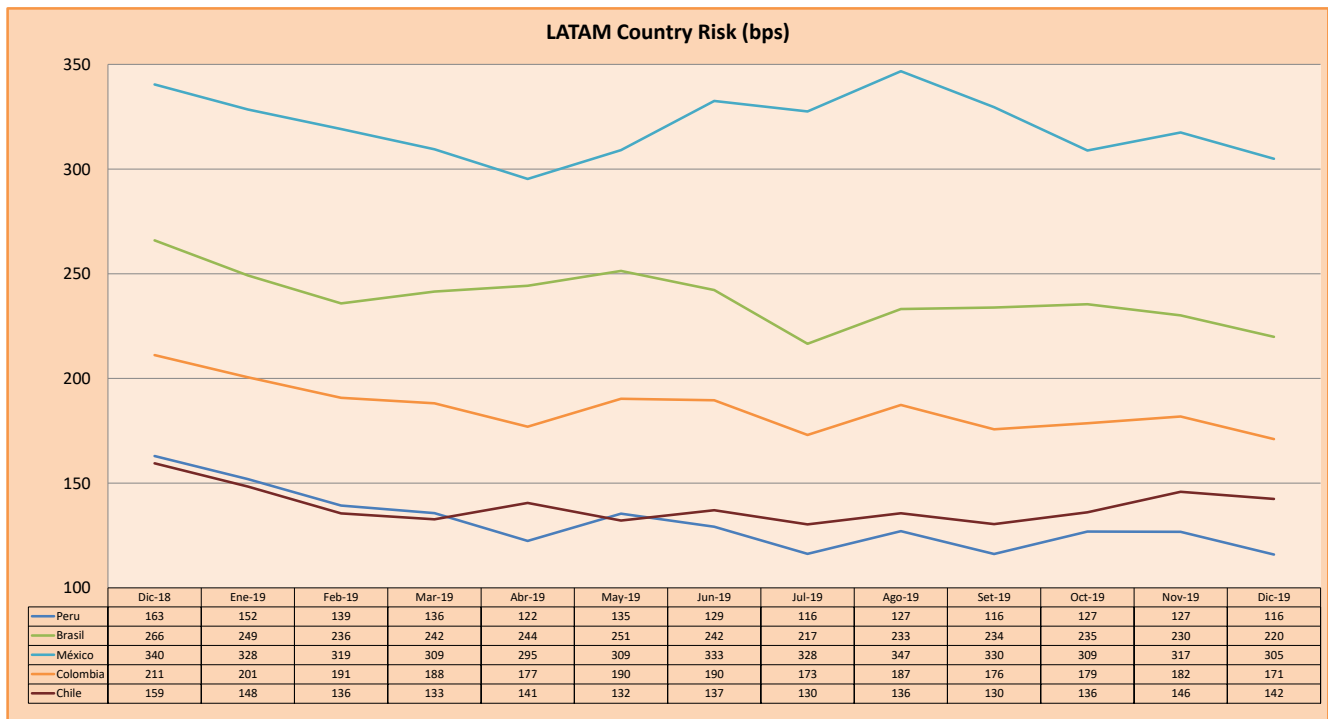
RISK RATINGS

Moody's	S&P	Fitch	
Aaa	AAA	AAA	Prime
Aa1	AA+	AA+	High credit quality
Aa2	AA	AA	
Aa3	AA-	AA-	
A1	A+	A+	Medium-high grade, with low credit risk
A2	A	A	
A3	A-	A-	
Baa1	BBB+	BBB+	Moderate Credit Risk
Baa2	BBB	BBB	
Baa3	BBB-	BBB-	
Ba1	BB+	BB+	It has speculative elements and it is subject to substantial credit risk
Ba2	BB	BB	
Ba3	BB-	BB-	
B1	B+	B+	It is considered speculative and it has high credit risk
B2	B	B	
B3	B-	B-	
Caa1	CCC+	CCC	Bad credit conditions and it is subject to high credit risk
Caa2	CCC		
Caa3	CCC-		
Ca	C	DDD DD D	Very close to default or in default
C	D		

Source: Bloomberg

Latin America Credit Rating			
Clasificadora de riesgo			
Country	Moody's	Fitch	S&P
Peru	A3	BBB+	BBB+
Mexico	A3	BBB	BBB+
Venezuela	C	WD	SD
Brazil	Ba2	BB-	BB-
Colombia	Baa2	BBB	BBB-
Chile	A1	A	A+
Argentina	Caa2 ^-	CC	CCC-
Panama	Baa1	BBB	BBB+

Source: Bloomberg



Source: BCRP

Capital Market Laboratory Coordinator: Economist Bruno Bellido Anicama
 Support: Alonso Butters, Jeanpierre León y Manuel Muñoz Najjar
 e-mail: pulsobursatil@ulima.edu.pe
 facebook: www.facebook.com/pulsobursatil.ul
 Phone number : 4376767 Annex: 35340

The content of this document is just for informational purposes. The information and opinions expressed should not be considered as recommendations for future decisions. Under any circumstances, the Capital Market Laboratory of University of Lima will be responsible for the use of the statements in this document.