

PULSO BURSÁTIL

FACULTAD DE CIENCIAS EMPRESARIALES Y ECONÓMICAS
CARRERA DE ECONOMÍA
LABORATORIO DE MERCADO DE CAPITALES

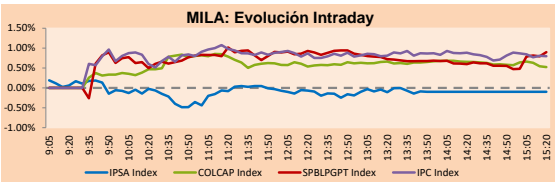


MILA

Lima, november 11, 2020

Main Indexes	Close	1 D	5 D	1 M	YTD	Cap. Burs. (US\$ bill)
▲ IPISA (Chile)	3,979.34	0.05%	13.11%	8.21%	-14.79%	104.10
- IGPA (Chile)	19,909.15	0.00%	11.80%	6.90%	-14.89%	128.17
▲ COLCAP (Colombia)	914.32	0.45%	2.89%	3.82%	-6.52%	4.99
▲ COLCAP (Colombia)	1,220.06	0.55%	5.50%	2.53%	-26.61%	71.68
▲ S&P/BVL (Perú)*	17,837.75	0.97%	0.73%	-0.98%	-13.10%	89.76
▲ S&P/BVL SEL (Perú)	472.81	0.82%	1.39%	-1.97%	-11.03%	73.24
▲ S&P/BVL LIMA 25	22,091.18	0.73%	1.42%	-0.74%	-14.22%	88.96
▲ IPC (México)	40,858.95	0.37%	9.31%	6.56%	-6.16%	253.01
▲ S&P MILA 40	457.38	1.44%	2.54%	9.99%	-24.16%	207.30

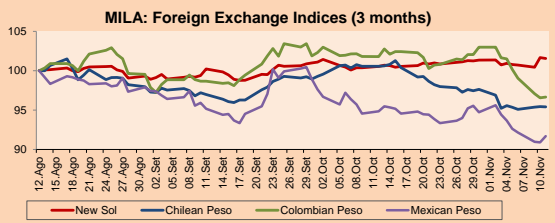
*Legend: Variation 1D: 1 day; 5D: 5 days; 1M: 1 Month; YTD: Var% 12/31/19 to date



Source: Bloomberg

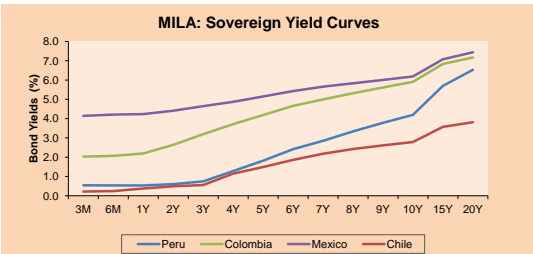
Currency	Price	1D*	5D*	30 D*	YTD*
▼ New Sol (PEN)	3.6225	-0.11%	0.60%	0.99%	9.37%
▼ Chilean Peso (CLP)	756.36	-0.04%	-0.15%	-5.13%	0.61%
▲ Colombian Peso (COP)	3,632.38	0.09%	-4.79%	-5.06%	10.84%
▲ Mexican Peso (MXN)	20.50	1.84%	-2.11%	-3.33%	8.30%

*Legend: Variation 1D: 1 day; 5D: 5 days; 1M: 1 Month; YTD: Var% 12/31/19 to date



Base: 12/08/20=100
Source: Bloomberg

Fixed Income	Currency	Price	Bid Yield (%)	Ask Yield (%)	Duration
PERU 7.35 07/21/25	USD	127.481	1.34	1.24	4.04
PERU 4.125 08/25/27	USD	116.085	1.66	1.57	6.00
PERU 8.75 11/21/33	USD	167.722	2.63	2.55	8.98
PERU 6.55 03/14/37	USD	150.395	2.75	2.68	10.93
PERU 5.625 11/18/2050	USD	157.392	2.81	2.77	17.66
CHILE 2.25 10/30/22	USD	103.187	0.71	0.52	1.92
CHILE 3.125 01/21/26	USD	110.431	1.10	1.01	4.80
CHILE 3.625 10/30/42	USD	115.147	2.73	2.68	16.00
COLOM 11.85 03/09/28	USD	164.869	2.31	2.11	5.52
COLOM 10.375 01/28/33	USD	159.996	4.17	4.00	8.03
COLOM 7.375 09/18/37	USD	146.266	3.71	3.63	11.02
COLOM 6.125 01/18/41	USD	134.786	3.70	3.64	12.87
MEX 4 10/02/23	USD	134.786	3.7	3.639	12.87
MEX5.55 01/45	USD	129.369	3.73	3.68	14.69



Source: Bloomberg

Equity

Largest gains	Exchange	Currency	Price	▲%
CREDECORP LTD	Peru	USD	119.15	5.63
KIMBERLY-CLA M-A	Mexico	MXN	33.14	5.24
ALFA SAB-A	Mexico	MXN	15.47	4.60
FOMENTO ECON-UBD	Mexico	MXN	144.21	4.30
COCA-COLA FEMSA	Mexico	MXN	91.94	4.19

Per Turnover	Exchange	Amount (US\$)
GRUPO F BANORT-O	Mexico	123,726,382
FOMENTO ECON-UBD	Mexico	68,694,549
WALMART DE MEXIC	Mexico	63,523,678
AMERICA MOVIL-L	Mexico	30,430,137
FALABELLA SA	Chile	29,743,297

Largest losses	Exchange	Currency	Price	▼%
ENTEL	Chile	CLP	4824.1	-7.44
AGUAS ANDINAS-A	Chile	CLP	203.6	-4.86
ANDINA-PREF B	Chile	CLP	1665	-2.35
BUENAVENTURA-ADF	Peru	USD	11.87	-2.30
CENCOSUD SHOPPIN	Chile	CLP	1275	-1.92

Per Volume	Exchange	Volume
ITAU CORPBANCA	Chile	1,081,017,558
BANCO SANTANDER	Chile	356,480,836
ENEL CHILE SA	Chile	90,013,474
BANCO DE CHILE	Chile	75,881,663
ENEL AMERICAS SA	Chile	73,915,787

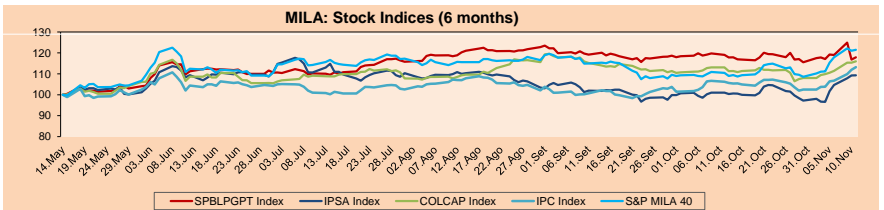
MILA

Peru: The General Index of the BVL ended today's session with a positive result of +0.97%. The index maintains an annual accumulated negative trend of -13.10% in local currency, while the adjusted return in dollars amounts to -20.54%. Then, the S&P / BVL Peru SEL varied by +0.82% while the S&P / BVL LIMA 25 by +0.73%. The PEN spot reached 5 / 3.6225. Headline: Congress intends to include 532 projects for more than 5 / 5,000 million in the Public Budget 2021.

Chile: The IPISA index ended the day with a positive return of +0.05%. The sectors that benefited the most during the session were Non-Basic Consumer Products (+7.42%) and Energy (+5.48%). The stocks with the best performance were SACI Falabella (+3.85%) and Cencosud SA (+3.31%). Headline: Falabella shows signs of recovery with an increase in its sales, but profits fell 91%.

Colombia: The COLCAP index ended the day with a positive return of +0.55%. The sectors that benefited the most during the session were Energy (+1.54%) and Materials (+1.31%). The stocks with the best performance were Almacenes Exito SA (+3.68%) and Cementos Argos SA (+2.31%). Headline: Net profit of Colombian Cementos Argos doubles in the third quarter.

Mexico: The IPC index closed the day with a positive return of +1.12%. The sectors that benefited the most during the session were Finance (+2.33%) and Basic Products (+2.33%). The best performing stocks were Banco del Bajío SA (+8.28%) and Kimberly-Clark de México SAB (+5.24%). Owner: Petrolera Total cedes 15% of its activities in Mexican shallow waters to Qatar Petroleum.

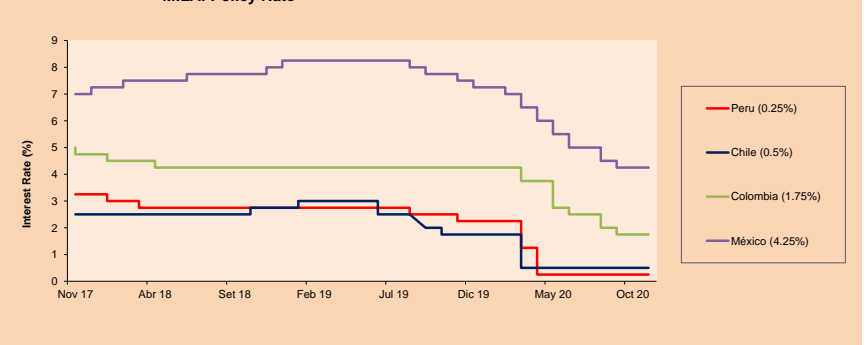


Base: 15/05/20=100
Source: Bloomberg

ETFs

	Curr.	Close	1D	5D	30 D	YTD	Exchange
▲ iShares MSCI All Peru Caped Index Fund	USD	30.32	1.44%	2.54%	0.64%	-18.16%	NYSE Arca
▲ iShares MSCI All Chile Caped Index Fund	USD	27.42	0.11%	13.12%	13.45%	-17.73%	Cboe BZX
▲ Global X MSCI Colombia	USD	9.24	0.09%	10.81%	8.67%	-33.53%	NYSE Arca
▲ iShares MSCI Mexico Capped	USD	39.08	0.49%	11.85%	9.90%	-13.21%	NYSE Arca
▲ iShares MSCI Emerging Markets	USD	48.02	0.65%	2.37%	3.87%	7.02%	NYSE Arca
▲ Vanguard FTSE Emerging Markets	USD	46.89	0.43%	2.11%	3.46%	5.44%	NYSE Arca
▲ iShares Core MSCI Emerging Markets	USD	57.48	0.58%	2.44%	4.02%	6.92%	NYSE Arca
▲ iShares JP Morgan Emerging Markets Bonds	USD	58.82	0.63%	3.08%	3.35%	0.27%	Cboe BZX
▼ Morgan Stanley Emerging Markets Domestic	USD	5.88	-0.34%	4.07%	3.52%	-15.88%	New York

MILA: Policy Rate



Source: Bloomberg

Capital Market Laboratory Coordinator: Economist Bruno Bellido
Collaboration: Piero Best, Luis Davila, Laura Delgado and Alonso Hernández
email: pulsobursatil@ulima.edu.pe
facebook: www.facebook.com/pulsobursatil

The content of this document is just for informational purposes. The information and opinions expressed should not be considered as recommendations for future decisions. Under any circumstances, the Capital Market Laboratory of University of Lima will be responsible for the use of the statements in this document.

PULSO BURSÁTIL

FACULTAD DE CIENCIAS EMPRESARIALES Y ECONÓMICAS
CARRERA DE ECONOMÍA
LABORATORIO DE MERCADO DE CAPITALES



WORLD

Main Indices	Close	1 D*	5 D*	1 M*	YTD*	Market Cap. (US\$ Mill.)
▼ Dow Jones (USA)	29,397.63	-0.08%	5.57%	1.94%	3.01%	9,125,606
▲ Standard & Poor's 500 (EEUU)	3,572.66	0.77%	3.75%	1.09%	10.58%	30,906,916
▲ NASDAQ Composite (USA)	11,786.43	2.01%	1.69%	-0.76%	31.36%	18,891,534
▲ Stoxx EUROPE 600 (Europe)	388.56	1.08%	6.95%	4.17%	-6.56%	9,013,316
▲ DAX (Germany)	13,216.18	0.40%	7.24%	0.59%	-0.25%	1,025,652
▲ FTSE 100 (United Kingdom)	6,382.10	1.35%	8.48%	6.34%	-15.38%	1,322,387
▲ CAC 40 (France)	5,445.21	0.48%	10.61%	9.36%	-8.91%	1,485,573
▲ IBEX 35 (Spain)	7,793.70	1.07%	14.92%	12.12%	-18.38%	434,322
▲ MSCI AC Asia Pacific Index	184.48	0.61%	4.35%	4.28%	8.10%	23,456,185
▼ HANG SENG (Hong Kong)	26,226.98	-0.28%	5.39%	6.27%	-7.08%	3,635,759
▼ SHANGHAI SEC Comp. (China)	3,342.20	-0.53%	1.98%	-0.69%	9.35%	6,098,233
▲ NIKKEI 225 (Japan)	25,349.60	1.78%	6.98%	8.02%	7.57%	3,671,967
▲ S&P / ASX 200 (Australia)	6,448.68	1.72%	6.39%	4.98%	-3.69%	1,480,140
▲ KOSPI (South Korea)	2,485.87	1.12%	9.03%	3.30%	12.99%	1,471,544

*Legend: Variation 1D: 1 Day; 5D: 5 Days; 1M: 1 Month; YTD: Var. % 12/31/19 to date

Equity

Germany (Stocks from DAX Index)					
Largest gains	Curr.	Price	▲ %	Exchange	
VNA GY	EUR	58.24	5.16	Xetra	
RWE GY	EUR	34.17	4.72	Xetra	
DB1 GY	EUR	132.75	2.91	Xetra	
SAP GY	EUR	101.52	2.45	Xetra	

Europe (Stocks from STOXX EUROPE 600)					
Largest gains	Curr.	Price	▲ %	Exchange	
IAG LN	GBP	148.7	8.03	Londres	
JDEP NA	EUR	33.68	7.54	EN Amsterdam	
EDPR PL	EUR	17.46	6.85	EN Lisbon	
SGRO LN	GBP	930	6.75	Londres	

Largest losses					
Curr.	Price	▼ %	Exchange		
MUV2 GY	EUR	233.8	-3.83	Xetra	
DHER GY	EUR	105	-2.01	Xetra	
BAS GY	EUR	56.43	-1.90	Xetra	
HENS GY	EUR	91.62	-1.46	Xetra	

Global Overview:

United States:

US markets ended today's session with mixed results, while the technology sector showed signs of recovery after last session. Market players possibly evaluated the advancement of the vaccine and the growth in the number of cases, moving away from economically sensitive sectors and returning to big technology. It should be remembered that after the positive announcement of the vaccine trials on Monday, many investors shifted their technology assets for sectors that tend to have higher returns after a recession ends, according to Reuters. Again, stocks benefited from the containment measures rose, boosting the NASDAQ index. Shawn Snyder of Citi Personal Wealth Management commented that "there are still really strong earnings for these tech companies and they still face a potential spike in COVID cases during the winter months and new restrictions and closures." In line with the above, Craig Fehr of Edward Jones said that there is currently an "almost oscillating outlook in the market between growth, technology and stay-at-home investments versus more cyclical value investments that are linked to the rebound and the broader recovery of the economy." Thus, the NASDAQ + 2.01% and the S&P 500 + 0.77% rose; instead, the DJIA -0.08% fell.

Europe:

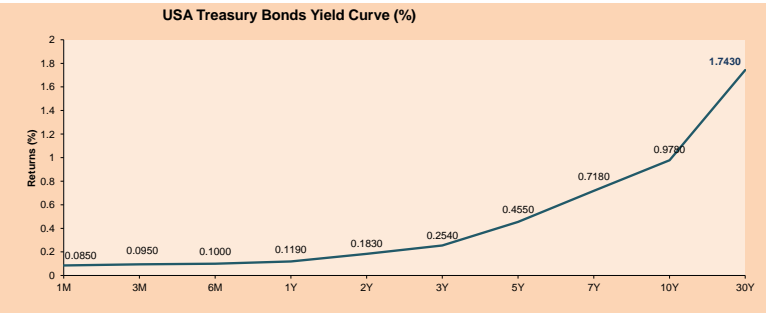
European markets closed today's session with positive returns motivated by encouraging comments from the director of the European Central Bank on new potential stimuli. Thus, the central bank focused on more purchases of emergency bonds and cheap financing loans for banks in the preparation of its new stimulus package for next month. Although the advances of a possible vaccine from the United States reduced the possibilities of greater stimulus for Wall Street, Lagarde said that in the same way, it would not prevent the bank from easing the policy for December. Also, according to recent comments from the governments of Spain and Italy, they would receive their first vaccines in early 2021. On the other hand, the results of the earnings season for the third quarter were better than expected, with around 68% of the pan-European index companies with earnings reports exceeding proposed estimates, according to Refinitiv data. In corporate actions, the Finnish insurer Sampo -0.34% stated that it would have sold 4% of the bank's share capital to the bank Nordex Bank after an accelerated bookbuild to institutional investors, which produced a -5.12% drop in the share price from the Finnish bank. In this way, the main indexes Stoxx 600 + 1.08%, FTSE 100 + 1.35%, CAC 40 + 0.48% and DAX + 0.40% closed higher.

Asia:

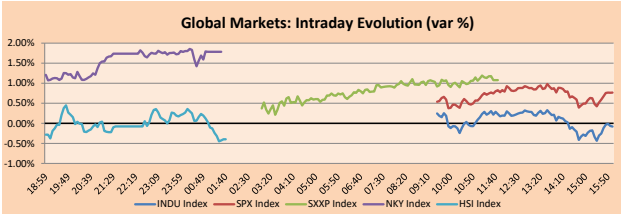
Asian markets closed today's session with mixed results, while investors remained hopeful about the development of a COVID-19 vaccine, optimistic corporate earnings and receding US political uncertainty. In Japan, its main Nikkei 225 index closed with a new 29-year high. The proceeds went to the banking sector which reacted after the Bank of Japan unveiled a plan to incentivize regional lenders and revitalize regional economies; thus, Grupo Financiero Concordia + 4.7% and Shimane Bank + 5.61%. On its side, South Korean shares closed at their highest level in more than two and a half years, after optimistic data on its exports that during the first 10 days of November increased by + 20.1% because of the strong chip sales and strong demand from major trading partners. On the other hand, markets in China closed lower, dragged down by losses in EV stocks - 3.56% and healthcare - 2.45%, while concerns about stricter regulation on big tech companies also weighed on the trust. Thus, the NIKKEI 225 + 1.78%, Shanghai Composite - 0.53%, Shenzhen Composite -1.93%, Hang Seng -0.28% and KOSPI + 1.33% closed the day with mixed returns.

ETFs

ETFs	Curr.	Close	1D	5D	30 D	YTD	Exchange
SPDR S&P 500 ETF TRUST	USD	356.67	0.74%	3.82%	1.20%	10.82%	NYSE Arca
ISHARES MSCI EMERGING MARKET	USD	48.02	0.65%	2.37%	3.87%	7.02%	NYSE Arca
ISHARES IBOXX HIGH YLD CORP	USD	85.73	-0.03%	0.59%	0.41%	-2.15%	NYSE Arca
FINANCIAL SELECT SECTOR SPDR	USD	27.04	-0.41%	10.10%	6.00%	-12.15%	NYSE Arca
VANECK GOLD MINERS	USD	37.15	-1.09%	-3.43%	-8.66%	26.88%	NYSE Arca
ISHARES RUSSELL 2000 ETF	USD	172.63	-0.04%	7.61%	5.40%	4.20%	NYSE Arca
SPDR GOLD SHARES	USD	174.90	-0.43%	-2.19%	-3.13%	22.39%	NYSE Arca
ISHARES 20+ YEAR TREASURY BO	USD	155.72	0.36%	-3.33%	-3.04%	14.94%	NASDAQ GM
INVESCO QQQ TRUST SERIES 1	USD	289.76	2.24%	0.99%	-1.62%	36.29%	NASDAQ GM
ISHARES NASDAQ BIOTECHNOLOGY	USD	139.51	1.29%	-0.85%	-2.88%	15.77%	NASDAQ GM
ENERGY SELECT SECTOR SPDR	USD	33.78	-1.03%	14.24%	9.43%	-43.74%	NYSE Arca
PROSHARES ULTRA VIX ST FUTUR	USD	13.06	-3.19%	-21.66%	-20.32%	1.32%	NYSE Arca
UNITED STATES OIL FUND LP	USD	29.04	0.45%	5.83%	3.46%	-71.66%	NYSE Arca
ISHARES MSCI BRAZIL ETF	USD	31.77	0.09%	11.91%	8.36%	-33.05%	NYSE Arca
SPDR S&P OIL & GAS EXP & PR	USD	48.28	-0.74%	15.92%	7.41%	-49.07%	NYSE Arca
UTILITIES SELECT SECTOR SPDR	USD	66.51	0.38%	4.41%	4.12%	2.92%	NYSE Arca
ISHARES US REAL ESTATE ETF	USD	84.77	0.64%	4.45%	0.74%	-8.93%	NYSE Arca
SPDR S&P BIOTECH ETF	USD	123.66	1.39%	0.58%	2.55%	30.02%	NYSE Arca
ISHARES IBOXX INVESTMENT GRA	USD	135.06	0.19%	-0.77%	-0.48%	5.55%	NYSE Arca
ISHARES JP MORGAN USD EMERGI	USD	113.61	0.38%	0.69%	0.78%	-0.83%	NASDAQ GM
REAL ESTATE SELECT SECT SPDR	USD	37.05	0.78%	3.96%	-0.19%	-4.19%	NYSE Arca
ISHARES CHINA LARGE-CAP ETF	USD	47.60	1.02%	1.36%	7.21%	9.10%	NYSE Arca
CONSUMER STAPLES SPDR	USD	66.79	0.86%	3.84%	0.44%	6.05%	NYSE Arca
VANECK JR GOLD MINERS	USD	52.89	-2.07%	-2.42%	-10.70%	25.15%	NYSE Arca
SPDR BBG BARC HIGH YIELD BND	USD	106.70	-0.15%	0.62%	0.58%	-2.59%	NYSE Arca
VANGUARD REAL ESTATE ETF	USD	84.26	0.38%	5.23%	1.02%	-9.19%	NYSE Arca
GRAYSCALE BITCOIN TRUST BTC	USD	17.53	6.15%	10.43%	38.37%	113.98%	OTC US



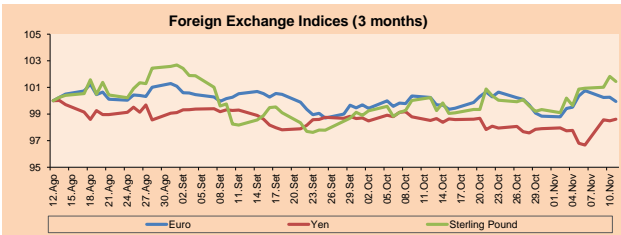
Source: Bloomberg



Source: Bloomberg

Currency	Price	1 D*	5 D*	1 M*	YTD*
▼ Euro	1.1777	-0.32%	0.43%	-0.30%	5.03%
▲ Yen	105.4300	0.12%	0.87%	0.09%	-2.93%
▼ Sterling Pound	1.3222	-0.38%	1.80%	1.21%	-0.26%
▲ Yuan	6.6310	0.21%	-0.32%	-1.70%	-4.77%
▲ Hong Kong Dollar	7.7547	0.01%	-0.02%	0.06%	-0.47%
▼ Brazilian Real	5.3998	-0.24%	-4.66%	-2.40%	33.98%
▲ Argentine Peso	79.4889	0.07%	0.59%	3.04%	32.76%

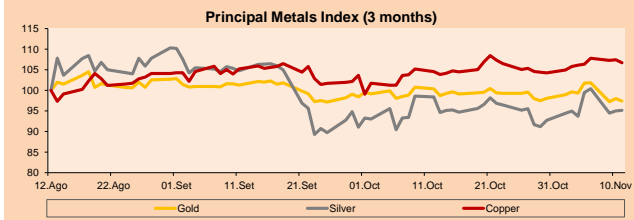
*Legend: Variation 1D: 1 Day; 5D: 5 Days; 1M: 1 Month; YTD: Var. % 12/31/19 to date



Base: 12/08/20=100
Source: Bloomberg

Commodities	Close	1 D*	5 D*	1 M*	YTD*
▼ Oro (US\$ Oz. T) (LME)	1,865.73	-0.62%	-1.95%	-2.97%	22.97%
▲ Plata (US\$ Oz. T) (LME)	24.28	0.18%	1.58%	-3.29%	35.99%
▲ Cobres (US\$ TM) (LME)	6,866.00	-0.68%	0.55%	2.05%	11.68%
▼ Zinc (US\$ TM) (LME)	2,608.00	-0.81%	0.97%	7.61%	14.41%
▲ Petróleo WTI (US\$ Barril) (NYM)	41.45	0.22%	5.87%	4.33%	-26.56%
▼ Estano (US\$ TM) (LME)	18,202.33	-0.42%	0.01%	-0.18%	5.96%
▲ Plomo (US\$ TM) (LME)	1,855.50	-1.32%	1.45%	1.04%	-3.03%
▼ Acaúcar #11 (US\$ Libra) (NYB-ICE)	14.49	-1.29%	-1.09%	4.70%	0.76%
▲ Cacao (US\$ TM) (NYB-ICE)	2,374.00	0.72%	3.62%	-2.34%	-2.38%
▲ Café Arabica (US\$ TM) (NYB-ICE)	111.95	1.77%	5.96%	0.40%	-20.06%

*Legend: Variación 1D: 1 Día; 5D: 5 Días; 1M: 1 Mes; YTD: Var. % 31/12/19 a la fecha



Base: 12/08/20=100
Source: Bloomberg

Capital Market Laboratory Coordinator: Economist Bruno Bellido
Collaboration: Piero Best, Luis Davila, Laura Delgado and Alonso Hernández
email: pulsobursatil@ulima.edu.pe
facebook: www.facebook.com/pulsobursatil.uy

The content of this document is just for informational purposes. The information and opinions expressed should not be considered as recommendations for future decisions. Under any circumstances, the Capital Market Laboratory of University of Lima will be responsible for the use of the statements in this document.

LIMA

Stocks

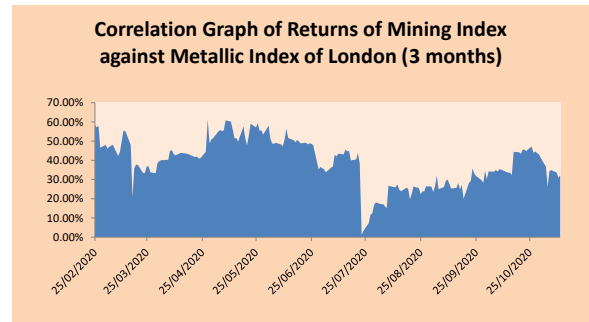
Ticker	Currency	Price	1D*	5D*	30D*	YTD*	Frequency	Volume (US\$)	Beta	Dividend Yield (%)	Price Earning	Market Cap. (M US\$)	Economic Sector*	Index Weight
▲ ALICORC1 PE**	S/.	7.00	0.45%	2.89%	3.82%	-6.52%	95.00%	990,016	0.79	3.57	16.10	1,649.32	Industrial	3.53%
▲ ATACOB1 PE**	S/.	0.12	0.00%	0.81%	-3.13%	-24.85%	40.00%	3,464	1.04	0.00	-	32.34	Mining	1.02%
▼ BACKUS1 PE**	S/.	19.50	-2.45%	-2.50%	5.41%	-31.58%	95.00%	35,526	0.51	3.35	5.75	8,224.35	Industrial	0.82%
▲ BAP PE**	US\$	119.15	5.63%	0.00%	-3.91%	-43.98%	100.00%	1,645,762	1.49	7.39	-	11,245.65	Diverse	5.82%
▼ BVN PE**	US\$	11.87	-2.30%	-3.34%	-5.49%	-22.42%	100.00%	393,016	1.45	0.22	-	3,271.78	Mining	5.88%
▼ CASAGRC1 PE**	S/.	4.39	-1.79%	-10.41%	9.75%	44.88%	90.00%	116,595	0.56	2.44	7.88	102.08	Agricultural	1.31%
▼ BBVAC1 PE**	S/.	2.25	-5.46%	10.84%	7.60%	-27.23%	95.00%	617,145	0.72	3.84	11.71	4,055.38	Finance	2.85%
▲ CORARE1 PE**	S/.	0.79	2.60%	-3.66%	11.27%	-13.19%	85.00%	46,407	0.76	9.21	5.62	316.83	Industrial	1.72%
▲ CPACASC1 PE**	S/.	5.53	2.41%	0.55%	0.55%	-10.08%	95.00%	523,304	0.62	6.51	17.84	653.54	Industrial	2.38%
▲ CVERDEC1 PE**	US\$	18.90	-0.42%	2.16%	5.88%	-2.07%	100.00%	318,294	0.76	0.00	45.62	6,616.06	Mining	5.25%
▼ ENGEPEC1 PE**	S/.	2.00	-0.50%	0.00%	0.00%	-13.04%	50.00%	3,023	0.49	8.56	10.05	1,567.29	Public Services	1.44%
- ENDISPC1**	S/.	5.10	0.00%	-1.92%	2.00%	-30.61%	55.00%	79,640	0.46	0.40	9.62	899.01	Public Services	0.98%
▲ FERREYC1 PE**	S/.	1.71	1.18%	1.79%	1.79%	-21.92%	100.00%	780,632	0.75	4.48	34.33	460.57	Diverse	4.90%
▲ GRAMONC1 PE**	S/.	1.52	1.33%	10.14%	-5.00%	-10.59%	85.00%	219,895	0.75	0.00	-	365.86	Diverse	4.05%
▲ IFS PE**	US\$	20.84	1.66%	4.20%	-15.80%	-49.05%	95.00%	420,735	1.18	8.40	20.00	2,405.93	Diverse	7.22%
▲ INRETC1 PE**	US\$	33.05	0.15%	-3.92%	1.07%	-8.19%	95.00%	116,931	0.63	1.71	27.58	3,397.78	Diverse	5.28%
▲ LUSURC1 PE**	S/.	26.01	0.04%	0.04%	-5.42%	1.01%	80.00%	681,347	0.51	2.50	22.06	3,496.37	Public Services	1.81%
- MINSUR1 PE**	S/.	1.67	0.00%	-1.18%	-3.47%	7.05%	55.00%	2,033	0.73	0.00	-	1,329.09	Mining	3.09%
- PML PE**	US\$	0.09	0.00%	5.88%	2.27%	60.71%	55.00%	2,700	1.26	0.00	-	23.77	Mining	2.12%
▲ RELAPAC1 PE**	S/.	0.07	1.56%	4.84%	-1.52%	-47.15%	50.00%	25,234	0.77	0.00	-	149.27	Industrial	2.12%
▼ SCCO PE**	US\$	53.75	-0.09%	1.61%	13.64%	26.68%	95.00%	275,746	0.87	2.79	31.31	41,552.69	Mining	2.14%
▲ SIDERC1 PE**	S/.	0.76	2.70%	1.33%	13.43%	-14.61%	100.00%	7,939	0.87	45.03	9.03	257.62	Industrial	1.43%
▼ TV PE**	US\$	0.12	-3.23%	14.29%	17.65%	-30.64%	95.00%	39,249	1.47	0.00	-	96.31	Mining	2.93%
- UNACEMC1 PE**	S/.	1.35	0.00%	3.85%	-1.46%	-32.50%	95.00%	133,307	0.85	1.93	65.69	677.56	Industrial	3.00%
▲ VOLCABC1 PE**	S/.	0.38	2.70%	1.33%	-2.81%	-14.61%	100.00%	200,041	0.91	0.00	-	1,744.28	Mining	5.90%
- NEXAPEC1 PE**	S/.	2.57	0.00%	7.98%	-1.53%	-25.51%	50.00%	213	0.99	0.00	-	938.21	Mining	1.56%

Quantity of shares: 26
 Source: Bloomberg, Economática
 * Bloomberg Industry Classification System
 ** PER is used in the stock market and original currency of the instrument
 *Legend: Variation 1D: 1 Day; 5D: 5 Days; 1M: 1 Month; YTD: Var.% 12/31/18 to date

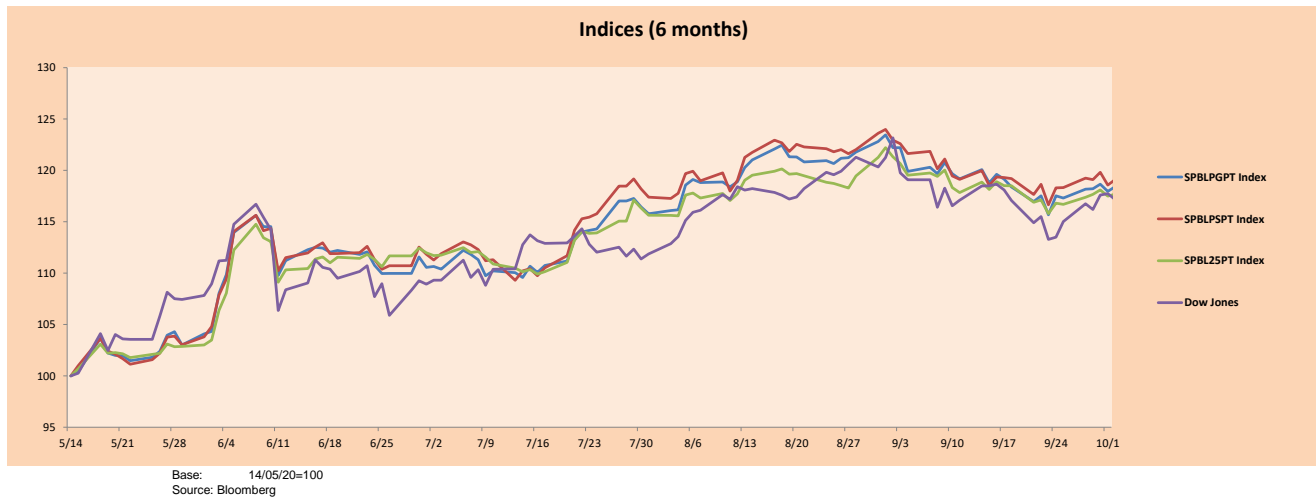
Sectorial Indices

	Close	1D*	5D*	30D*	YTD*	Beta
▼ Mining Index	339.37	-0.82%	1.16%	6.55%	11.39%	1.06
▲ Consumer Index	995.77	0.26%	-1.71%	-2.93%	-12.67%	0.43
▲ Industrial Index	173.98	1.31%	3.50%	0.69%	-17.59%	0.58
▲ Banking and Financial Index	772.39	4.68%	1.29%	-3.66%	-34.52%	1.51
▲ Construction Index	188.74	1.35%	4.21%	0.26%	-16.72%	0.55
▼ Services Index	608.71	-0.07%	-0.20%	-2.70%	-6.57%	0.08
▼ Electric Index	594.25	-0.07%	-0.20%	-2.70%	-6.57%	0.08

*Legend: Variation 1D: 1 Day; 5D: 5 Days; 1M: 1 Month; YTD: Var.% 12/31/19 to date



Indices (6 months)



Capital Market Laboratory Coordinator: Economist Bruno Bellido
 Collaboration: Piero Best, Luis Davila, Laura Delgado and Alonso Hernández
 email: pulsohorsatil@ulima.edu.pe
 facebook: www.facebook.com/pulsohorsatil.ul

SOVEREIGN RATING

RISK RATINGS

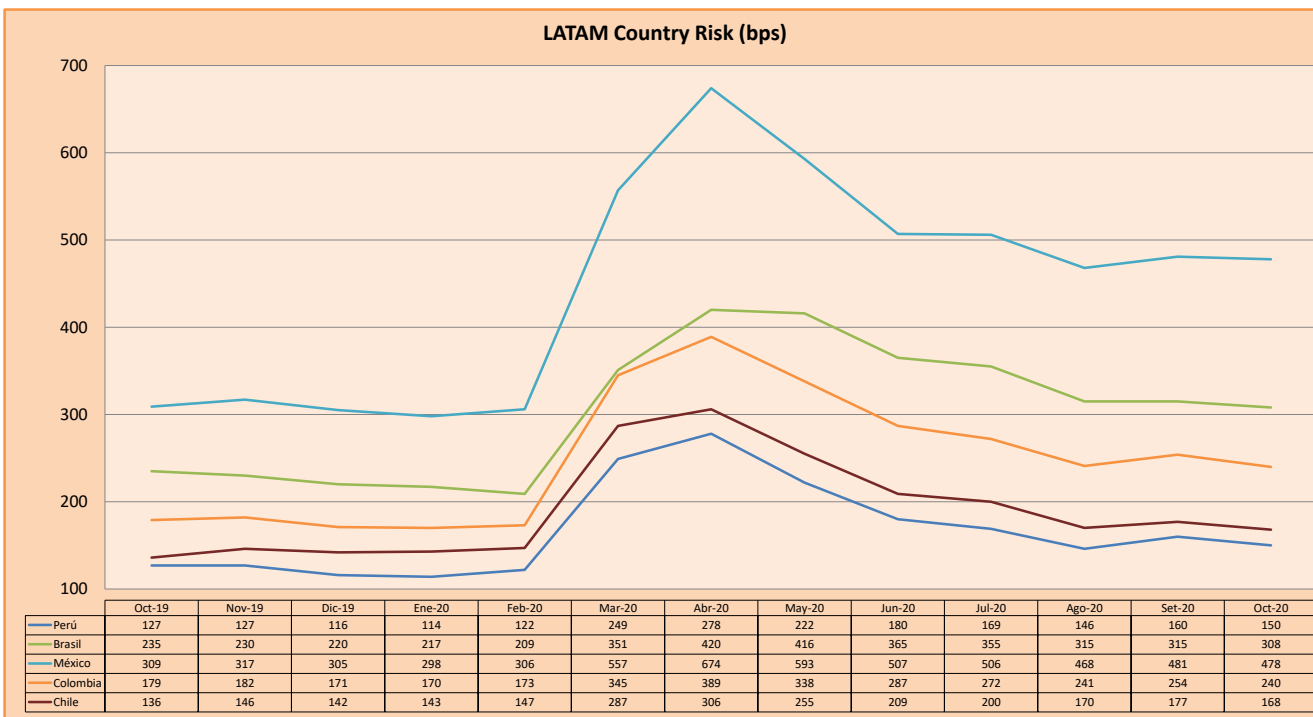
Moody's	S&P	Fitch	
Aaa	AAA	AAA	Prime
Aa1	AA+	AA+	High credit quality
Aa2	AA	AA	
Aa3	AA-	AA-	
A1	A+	A+	Medium-high grade, with low credit risk
A2	A	A	
A3	A-	A-	
Baa1	BBB+	BBB+	Moderate Credit Risk
Baa2	BBB	BBB	
Baa3	BBB-	BBB-	
Ba1	BB+	BB+	It has speculative elements and it is subject to substantial credit risk
Ba2	BB	BB	
Ba3	BB-	BB-	
B1	B+	B+	It is considered speculative and it has high credit risk
B2	B	B	
B3	B-	B-	
Caa1	CCC+		Bad credit conditions and it is subject to high credit risk
Caa2	CCC		
Caa3	CCC-	CCC	
Ca	C		Very close to default or in default
		DDD	
C	D	DD D	

Source: Bloomberg

Latin America Credit Rating			
Clasificadora de riesgo			
Country	Moody's	Fitch	S&P
Peru	A3	BBB+	BBB+
México	Ba2	BB-	BB-
Venezuela	C	WD	SD
Brazil	Ba2	BB-	BB-
Colombia	Baa2	BBB-	BBB-
Chile	A1	A-	A+
Argentine	Ca	WD	CCC+
Panama	Baa1	BBB	BBB+

Source: Bloomberg

LATAM Country Risk (bps)



Source: BCRP

Capital Market Laboratory Coordinator: Economist Bruno Bellido
Collaboration: Piero Best, Luis Davila, Laura Delgado and Alonso Hernández
email: pulsobursatil@ulima.edu.pe
facebook: www.facebook.com/pulsobursatil.ul