

PULSO BURSÁTIL

FACULTAD DE CIENCIAS EMPRESARIALES Y ECONÓMICAS
CARRERA DE ECONOMÍA
LABORATORIO DE MERCADO DE CAPITALES

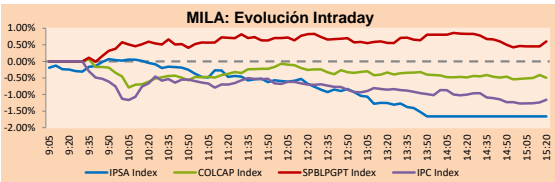


MILA

Lima, november 25, 2020

Main Indexes	Close	1 D	5 D	1 M	YTD	Cap. Burs. (US\$ bill)
▼ IPSA (Chile)	4,135.16	-1.48%	0.64%	11.58%	-11.45%	106.81
▼ IGPA (Chile)	20,669.94	-1.23%	0.86%	10.34%	-11.64%	130.75
▼ COLSC (Colombia)	957.04	-0.49%	4.19%	10.34%	-2.15%	5.32
▼ COLCAP (Colombia)	1,263.65	-0.55%	2.36%	7.35%	-23.99%	76.09
▲ S&P/BVL (Perú)*	19,642.32	0.83%	5.44%	10.08%	-4.31%	98.86
▲ S&P/BVL SEL (Perú)	520.17	0.23%	5.70%	9.46%	-2.12%	81.15
▼ S&P/BVL LIMA 25	24,068.47	-0.20%	3.40%	9.15%	-6.54%	98.02
▼ IPC (México)	42,200.59	0.17%	1.81%	10.34%	-3.08%	269.97
▲ S&P MILA 40	479.65	0.51%	4.21%	13.07%	-20.46%	219.26

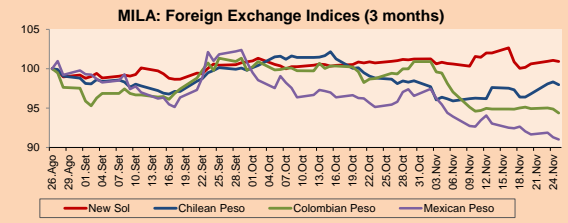
*Legend: Variation 1D: 1 day; 5D: 5 days; 1M: 1 Month; YTD: Var% 12/31/19 to date



Source: Bloomberg

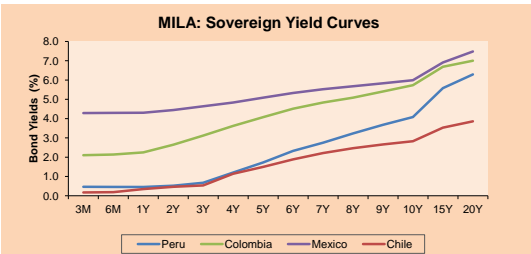
Currency	Price	1D*	5D*	30 D*	YTD*
▼ New Sol (PEN)	3,604.00	-0.15%	0.87%	-0.02%	8.81%
▼ Chilean Peso (CLP)	770.00	-0.37%	1.63%	-0.71%	2.43%
▼ Colombian Peso (COP)	3,620.26	-0.53%	-0.68%	-5.08%	10.47%
▼ Mexican Peso (MXN)	19.96	-0.31%	-1.76%	-4.64%	5.48%

*Legend: Variation 1D: 1 day; 5D: 5 days; 1M: 1 Month; YTD: Var% 12/31/19 to date



Base: 26/08/20=100
Source: Bloomberg

Fixed Income	Currency	Price	Bid Yield (%)	Ask Yield (%)	Duration
PERU 7.35 07/21/25	USD	127.799	1.23	1.12	4.01
PERU 4.125 08/25/27	USD	116.519	1.56	1.51	5.96
PERU 8.75 11/21/33	USD	166.953	2.67	2.58	9.17
PERU 6.55 03/14/37	USD	149.155	2.82	2.74	10.86
PERU 5.625 11/18/2050	USD	154.042	2.93	2.89	17.81
CHILE 2.25 10/30/22	USD	103.338	0.62	0.37	1.88
CHILE 3.125 01/21/26	USD	110.55	1.05	0.98	4.76
CHILE 3.625 10/30/42	USD	115.848	2.69	2.64	15.99
COLOM 11.85 03/09/28	USD	165.364	2.22	2.00	5.49
COLOM 10.375 01/28/33	USD	159.131	4.23	4.04	7.99
COLOM 7.375 09/18/37	USD	144.432	3.83	3.73	10.95
COLOM 6.125 01/18/41	USD	133.076	3.79	3.74	12.78
MEX 4 10/02/23	USD	133.076	3.794	3.739	12.78
MEX5.55 01/45	USD	127.029	3.84	3.81	14.55



Source: Bloomberg

Equity

Largest gains	Exchange	Currency	Price	▲%
CREDCORP LTD	Peru	USD	151.50	3.41
ORBIA ADVANCE CO	Mexico	MXN	42.69	3.24
FIBRA UNO	Mexico	MXN	20.23	2.74
GRUPO CARSO-A1	Mexico	MXN	47.31	2.49
CMPC	Chile	CLP	1718.30	2.40

Per Turnover	Exchange	Amount (US\$)
GRUPO F BANORT-O	Mexico	43,362,573
GRUPO MEXICO-B	Mexico	40,820,607
WALMART DE MEXIC	Mexico	38,277,880
AMERICA MOVIL-L	Mexico	28,824,093
ANDINA-PREF B	Chile	21,312,299

Largest losses	Exchange	Currency	Price	▼%
GRUPO F BANORT-O	Mexico	MXN	108.76	-5.52
ENGIE ENERGIA CH	Chile	CLP	865	-4.53
EMPRESAS COPEC	Chile	CLP	6309	-4.41
COLBUN SA	Chile	CLP	129.05	-4.40
SONDA SA	Chile	CLP	480	-4.02

Per Volume	Exchange	Volume
ITAU CORPBANCA	Chile	477,968,869
BANCO DE CHILE	Chile	116,101,780
BANCO SANTANDER	Chile	83,444,312
ENEL AMERICAS SA	Chile	54,669,790
AMERICA MOVIL-L	Mexico	39,629,111

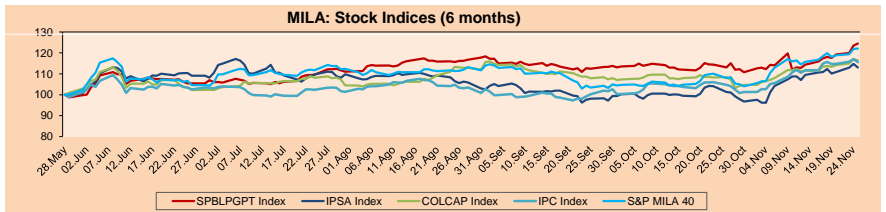
MILA

Peru: The General Index of the BVL ended today's session with a positive result of +0.83%. The index maintains an annual accumulated negative trend of -4.31% in local currency, while the adjusted return in dollars amounts to -12.05%. Then, the S&P / BVL Peru SEL varied by +0.23% while the S&P / BVL LIMA 25 by -0.20%. The PEN spot reached 5 / 3.6040. Holder: Members of the ONP may access a pension with 17 years of contribution under a "pension loan".

Chile: The IPSA index ended the day with a negative return of -1.48%. The sectors most affected in the session were Energy (-4.41%) and Information Technology (-4.02%). The worst performing stocks were Engie Energía Chile SA (-4.53%) and Inversiones La Construcción SA (+4.59%). Headline: Falabella advances in its partial exit from Argentina: it would sell all the home improvement assets.

Colombia: The COLCAP Index ended the day with a negative return of -0.55%. The sectors most affected during the session were Finance (-1.38%) and Non-Basic Consumer Products (-0.25%). The worst performing stocks were Promigas SA (-9.77%) and Almacenes Éxito SA (-2.87%). Headline: Colombia's Carrejon Mine and the union take the first step to end the strike.

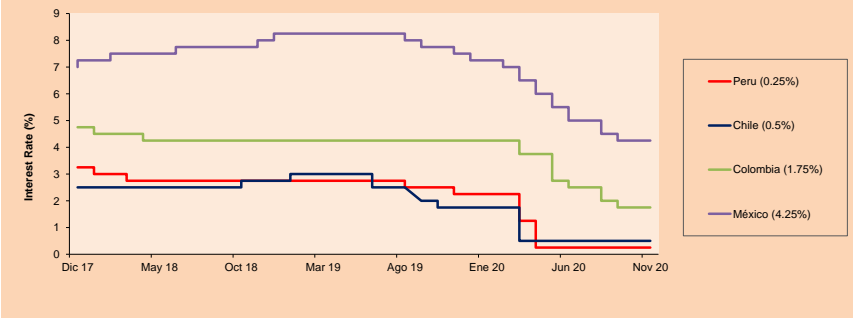
Mexico: The IPC index closed the day with a negative return of -1.25%. The sectors most affected during the session were Finance (-3.33%) and Public Services (-2.98%). The worst performing stocks were Grupo Financiero Banorte SAB (-5.52%) and Cemex SAB de CV (-3.78%). Headline: Current account of Mexico registers a historical surplus due to the fall in imports.



Base: 29/05/20=100
Source: Bloomberg

ETFs	Curr.	Close	1D	5D	30 D	YTD	Exchange
▲ iShares MSCI All Peru Caped Index Fund	USD	33.0965	0.51%	4.21%	9.52%	-10.67%	NYSE Arca
▲ iShares MSCI All Chile Caped Index Fund	USD	28.01	-0.71%	1.34%	12.72%	-15.96%	Cboe BZX
▲ Global X MSCI Colombia	USD	9.735	0.05%	3.45%	16.03%	-29.96%	NYSE Arca
▲ iShares MSCI Mexico Capped	USD	41.56	-0.69%	1.76%	16.12%	-7.71%	NYSE Arca
▼ iShares MSCI Emerging Markets	USD	49.57	-0.56%	1.77%	8.42%	10.47%	NYSE Arca
▼ Vanguard FTSE Emerging Markets	USD	48.31	-0.45%	1.81%	7.91%	8.64%	NYSE Arca
▼ iShares Core MSCI Emerging Markets	USD	59.53	-0.48%	1.95%	8.79%	10.73%	NYSE Arca
▼ iShares JP Morgan Emerging Markets Bonds	USD	59.67	-0.53%	0.52%	6.40%	1.72%	Cboe BZX
- Morgan Stanley Emerging Markets Domestic	USD	6.09	0.00%	0.50%	7.41%	-12.88%	New York

MILA: Policy Rate



Source: Bloomberg

Capital Market Laboratory Coordinator: Economist Bruno Bellido
Collaboration: Piero Best, Luis Davila, Laura Delgado and Alonso Hernández
email: pulsobursatil@ulima.edu.pe
facebook: www.facebook.com/pulsobursatil.ul

The content of this document is just for informational purposes. The information and opinions expressed should not be considered as recommendations for future decisions. Under any circumstances, the Capital Market Laboratory of University of Lima will be responsible for the use of the statements in this document.

WORLD

Table of Main Indices with columns for Close, 1 D*, 5 D*, 1 M*, YTD*, and Market Cap. (US\$ Mill).

Equity

Tables of Largest gains and Largest losses for Equity (Stocks from DAX Index) and Equity (Stocks from STOXX EUROPE 600).

Global Overview: United States:

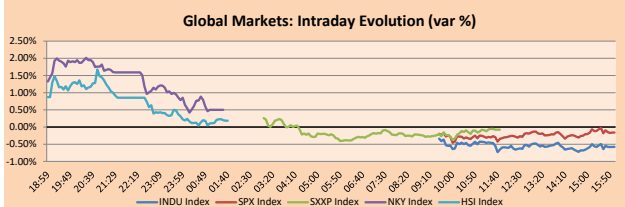
US markets closed today's session with mixed results, driven by negative data from a higher record of coronavirus infections, record hospitalizations, an increase in weekly applications for unemployment benefits to a maximum of five weeks and orders for durable goods. October increased only 0.2% excluding defense spending...

Europe:

European markets closed today's session with mixed returns as concerns about the advance of the coronavirus fade thanks to the expectation of the next vaccine. Positive results from three major pharmaceutical companies in their COVID-19 vaccine trials have kept global market sentiment optimistic...

Asia:

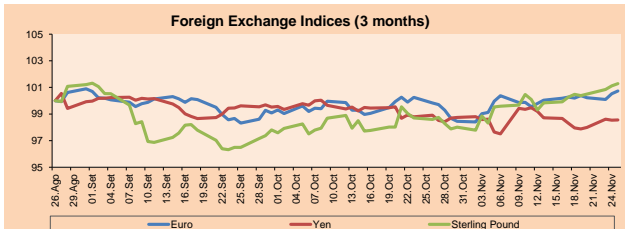
Asian markets closed trading today with mostly positive returns, supported by progress in developing a low-cost coronavirus vaccine and the formal transition of power approval for US President-elect Joe Biden. The CSI 300 fell by -0.61% due to a contrary expectation regarding the decrease in tension between China and the United States...



Source: Bloomberg

Table of Currency with columns for Price, 1 D*, 5 D*, 1 M*, and YTD*.

Legend: Variación 1D: 1 Day; 5D: 5 Days; 1M: 1 Month; YTD: Var.% 12/31/19 to date

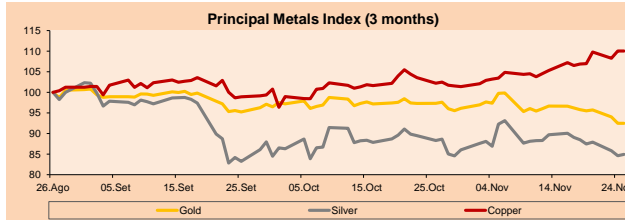


Base: 26/08/20=100

Source: Bloomberg

Table of Commodities with columns for Close, 1 D*, 5 D*, 1 M*, and YTD*.

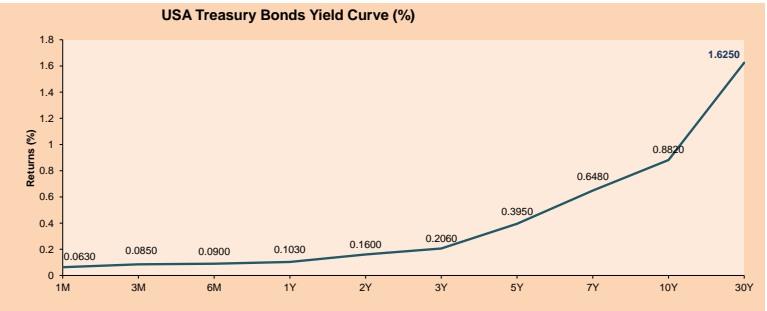
Legend: Variación 1D: 1 Día; 5D: 5 Días; 1M: 1 Mes; YTD: Var.% 31/12/19 a la fecha



Base: 26/08/20=100

Source: Bloomberg

Table of ETFs with columns for Curr., Close, 1D, 5D, 30 D, YTD, and Exchange.



Source: Bloomberg

Capital Market Laboratory Coordinator: Economist Bruno Bellido
Collaboration: Piero Best, Luis Davila, Laura Delgado and Alonso Hernandez

LIMA

Stocks

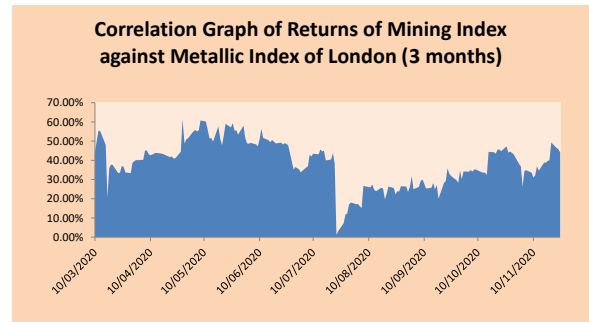
Ticker	Currency	Price	1D*	5D*	30D*	YTD*	Frequency	Volume (US\$)	Beta	Dividend Yield (%)	Price Earning	Market Cap. (M US\$)	Economic Sector*	Index Weight
▼ ALICORC1 PE**	S/.	7.30	-0.49%	4.19%	10.34%	-2.15%	100.00%	162,763	0.75	3.42	16.79	1,728.31	Industrial	3.53%
▲ ATACOCB1 PE**	S/.	0.15	0.00%	16.94%	11.54%	-12.12%	50.00%	3,552	1.11	0.00	-	38.01	Mining	1.02%
▲ BACKUSI1 PE**	S/.	19.51	0.57%	-0.46%	2.68%	-31.54%	95.00%	41,827	0.53	3.35	8.83	8,267.59	Industrial	0.82%
▲ BAP PE**	US\$	151.50	3.41%	11.81%	26.46%	-28.77%	100.00%	3,020,438	1.56	5.81	-	14,298.92	Diverse	5.82%
- BVN PE**	US\$	10.94	0.92%	-4.87%	-11.77%	-28.50%	100.00%	303,858	1.36	0.24	-	3,015.44	Mining	5.88%
- CASAGRC1 PE**	S/.	5.12	0.00%	-1.54%	4.28%	68.98%	90.00%	1,496	0.50	0.00	9.19	119.67	Agricultural	1.31%
▲ BBVAC1 PE**	S/.	2.25	0.45%	5.14%	7.14%	-27.23%	95.00%	2,519,463	0.73	3.84	11.71	4,076.20	Finance	2.85%
▲ CORAREI1 PE**	S/.	0.89	-1.11%	-1.11%	12.66%	-2.20%	100.00%	3,103	0.68	5.31	6.33	324.03	Industrial	1.72%
▼ CPACASC1 PE**	S/.	6.08	-0.98%	1.33%	9.55%	-1.14%	95.00%	51,224	0.60	5.92	19.61	720.71	Industrial	2.38%
▼ CVERDEC1 PE**	US\$	19.60	-1.51%	5.38%	3.16%	1.55%	100.00%	56,396	0.75	0.00	31.86	6,861.10	Mining	5.25%
▼ ENGEPEC1 PE**	S/.	2.00	-2.44%	2.04%	-4.76%	-13.04%	55.00%	3,324	0.50	12.61	10.05	1,575.33	Public Services	1.44%
▼ ENDISPC1**	S/.	5.10	-1.35%	0.99%	-1.92%	-30.61%	60.00%	32,707	0.45	0.40	9.62	903.63	Public Services	0.98%
- FERREYC1 PE**	S/.	1.70	0.00%	-2.86%	-1.73%	-22.37%	100.00%	40,005	0.69	4.51	34.13	460.23	Diverse	4.90%
▲ AENZAC1 PE**	S/.	1.67	4.38%	5.70%	19.29%	-1.76%	95.00%	313,340	0.74	0.00	-	404.02	Diverse	4.05%
▲ IFS PE**	US\$	29.20	0.17%	14.06%	31.53%	-28.61%	100.00%	588,127	1.31	5.99	29.09	3,371.07	Diverse	7.22%
- INRETC1 PE**	US\$	35.50	0.00%	4.41%	10.70%	-1.39%	100.00%	61,102	0.61	1.59	28.68	3,649.66	Diverse	5.28%
▼ LUSURC1 PE**	S/.	27.00	-0.04%	3.85%	-0.74%	4.85%	90.00%	10,219	0.52	2.40	26.50	3,648.08	Public Services	1.81%
- MINSUR1 PE**	S/.	1.70	0.00%	1.80%	1.80%	8.97%	75.00%	28,001	0.74	0.00	-	1,359.91	Mining	3.09%
▲ PML PE**	US\$	0.09	2.22%	2.22%	6.98%	64.29%	65.00%	5,360	1.29	0.00	-	24.29	Mining	2.12%
▼ RELAPAC1 PE**	S/.	0.07	-2.94%	-4.35%	1.54%	-46.34%	70.00%	50,449	0.71	0.00	-	152.35	Industrial	2.12%
- SCCO PE**	US\$	60.00	0.50%	7.03%	17.65%	41.41%	90.00%	358,127	0.85	2.50	34.95	46,384.40	Mining	2.14%
▲ SIDERC1 PE**	S/.	0.80	0.00%	0.00%	15.94%	-10.11%	95.00%	5,702	0.88	42.78	9.51	272.57	Industrial	1.43%
▼ TV PE**	US\$	0.15	-9.58%	-2.58%	46.60%	-12.72%	90.00%	39,579	1.58	0.00	-	121.19	Mining	2.93%
- UNACEMC1 PE**	S/.	1.50	0.00%	0.00%	14.50%	-25.00%	95.00%	208,560	0.87	1.73	72.99	756.71	Industrial	3.00%
▼ VOLCABC1 PE**	S/.	0.41	-2.38%	3.80%	7.89%	-7.87%	100.00%	119,351	0.85	0.00	-	1,773.57	Mining	5.90%
- NEXAPEC1 PE**	S/.	2.80	0.00%	7.69%	7.69%	-18.84%	55.00%	8,101	0.99	0.00	-	1,026.68	Mining	1.56%

Quantity of shares: 26
Source: Bloomberg, Economática
* Bloomberg Industry Classification System
** PER is used in the stock market and original currency of the instrument
*Legend: Variation 1D: 1 Day; 5D: 5 Days; 1M: 1 Month; YTD: Var.% 12/31/18 to date

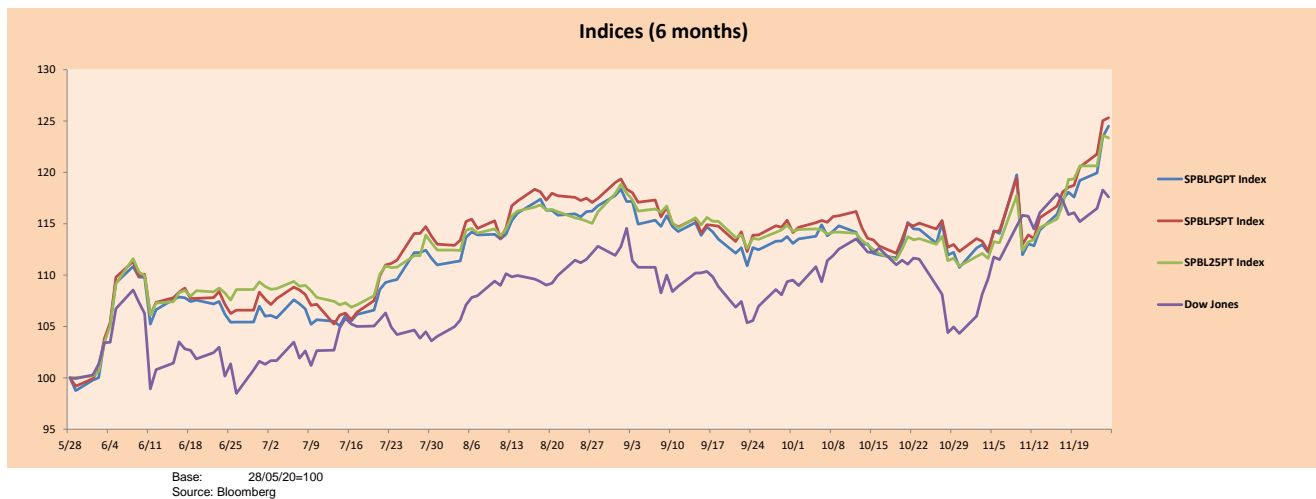
Sectorial Indices

	Close	1D*	5D*	30D*	YTD*	Beta
▲ Mining Index	353.57	0.14%	3.81%	6.71%	16.05%	0.99
▼ Consumer Index	1,044.70	-0.54%	2.98%	4.30%	-8.38%	0.41
▲ Industrial Index	187.37	0.48%	0.36%	10.48%	-11.25%	0.57
▲ Banking and Financial Index	974.67	2.81%	12.61%	25.85%	-17.37%	1.61
▲ Construction Index	206.18	0.70%	1.70%	13.89%	-9.02%	0.57
▼ Services Index	621.83	-0.51%	2.13%	-0.56%	-4.56%	0.08
▼ Electric Index	607.06	-0.51%	2.13%	-0.56%	-4.56%	0.08

*Legend: Variation 1D: 1 Day; 5D: 5 Days; 1M: 1 Month; YTD: Var.% 12/31/19 to date



Indices (6 months)



Capital Market Laboratory Coordinator: Economist Bruno Bellido
Collaboration: Piero Best, Luis Davila, Laura Delgado and Alonso Hernández
email: pulsohorsatil@ulima.edu.pe
facebook: www.facebook.com/pulsohorsatil.ul

The content of this document is just for informational purposes. The information and opinions expressed should not be consider as recommendations for future decisions. Under any circumstances, the Capital Market Laboratory of University of Lima will be responsible for the use of the statements in this document.

SOVEREIGN RATING

RISK RATINGS

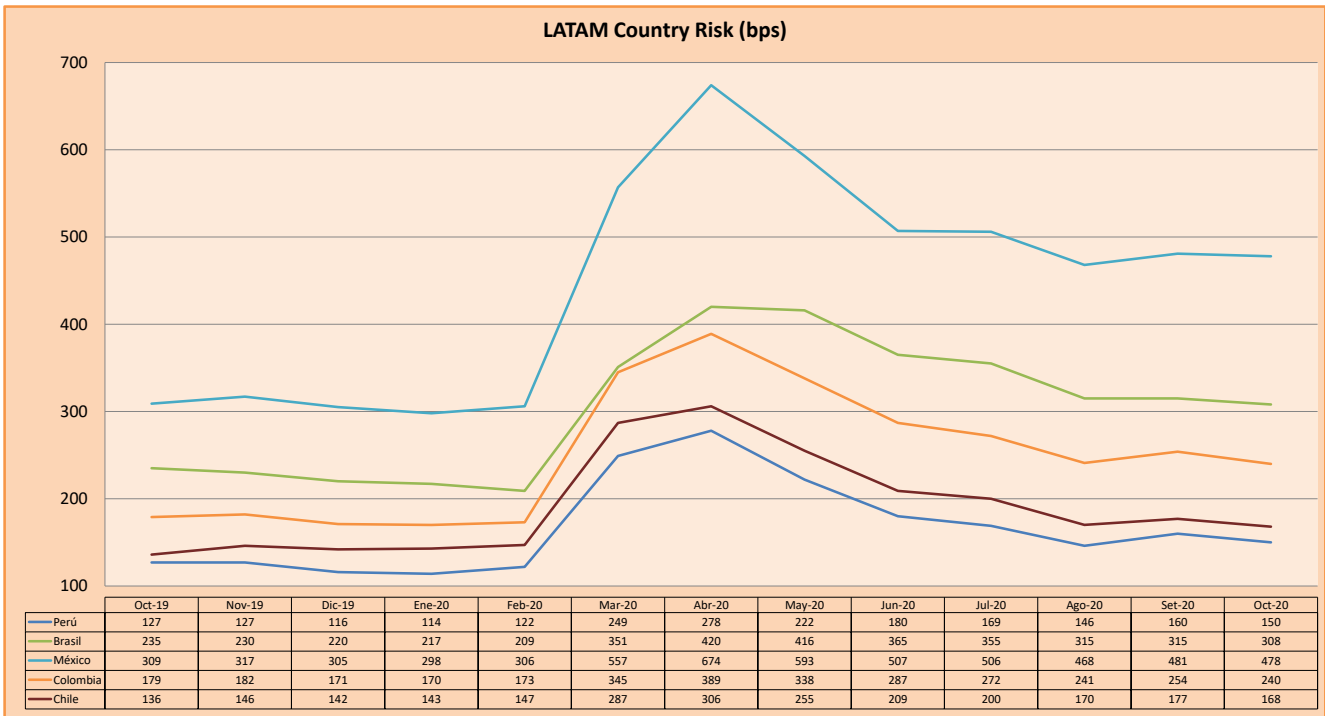
Moody's	S&P	Fitch	
Aaa	AAA	AAA	Prime
Aa1	AA+	AA+	High credit quality
Aa2	AA	AA	
Aa3	AA-	AA-	
A1	A+	A+	Medium-high grade, with low credit risk
A2	A	A	
A3	A-	A-	
Baa1	BBB+	BBB+	Moderate Credit Risk
Baa2	BBB	BBB	
Baa3	BBB-	BBB-	
Ba1	BB+	BB+	It has speculative elements and it is subject to substantial credit risk
Ba2	BB	BB	
Ba3	BB-	BB-	
B1	B+	B+	It is considered speculative and it has high credit risk
B2	B	B	
B3	B-	B-	
Caa1	CCC+		Bad credit conditions and it is subject to high credit risk
Caa2	CCC		
Caa3	CCC-	CCC	
Ca	C		Very close to default or in default
		DDD	
C	D	DD D	

Source: Bloomberg

Latin America Credit Rating			
Clasificadora de riesgo			
Country	Moody's	Fitch	S&P
Peru	A3	BBB+	BBB+
México	Ba2	BB-	BB-
Venezuela	C	WD	SD
Brazil	Ba2	BB-	BB-
Colombia	Baa2	BBB-	BBB-
Chile	A1	A-	A+
Argentine	Ca	WD	CCC+
Panama	Baa1	BBB	BBB

Source: Bloomberg

LATAM Country Risk (bps)



Source: BCRP

Capital Market Laboratory Coordinator: Economist Bruno Bellido
Collaboration: Piero Best, Luis Davila, Laura Delgado and Alonso Hernández
email: pulsobursatil@ulima.edu.pe
facebook: www.facebook.com/pulsobursatil.ul