

PULSO BURSÁTIL

FACULTAD DE CIENCIAS EMPRESARIALES Y ECONÓMICAS
CARRERA DE ECONOMÍA
LABORATORIO DE MERCADO DE CAPITALES

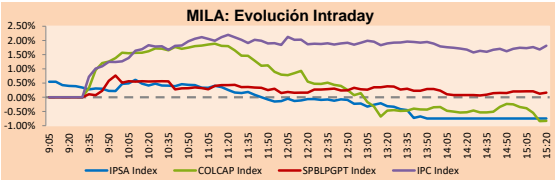


MILA

Lima, december 10, 2020

| Main Indexes | Close | 1 D | 5 D | 1 M | YTD | Cap. Burs. (US\$ bill) |
|----------------------|-----------|--------|--------|--------|---------|------------------------|
| ▼ IPSA (Chile) | 4,106.42 | -1.02% | -1.22% | 3.19% | -12.07% | 110.36 |
| ▼ IGPA (Chile) | 20,564.12 | -0.91% | -0.99% | 3.29% | -12.09% | 135.91 |
| ▼ COLSC (Colombia) | 1,024.79 | -1.02% | 3.27% | 12.08% | 4.78% | 5.97 |
| ▼ COLCAP (Colombia) | 1,368.49 | -1.09% | 6.21% | 12.17% | -17.68% | 84.70 |
| ▲ S&P/BVL (Perú)* | 20,781.79 | 0.66% | 2.30% | 16.50% | 1.25% | 101.85 |
| ▲ S&P/BVL SEL (Perú) | 542.33 | 0.07% | 1.77% | 14.70% | 2.05% | 83.76 |
| ▲ S&P/BVL LIMA 25 | 25,244.57 | 0.61% | 3.24% | 14.27% | -1.97% | 100.97 |
| ▲ IPC (México) | 43,518.71 | 1.83% | -0.95% | 6.51% | -0.05% | 271.34 |
| ▲ S&P MILA 40 | 512.30 | 0.39% | 3.78% | 12.01% | -15.05% | 5,430.00 |

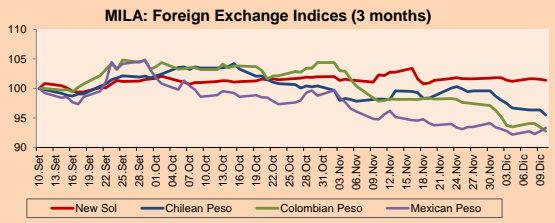
*Legend: Variation 1D: 1 day; 5D: 5 days; 1M: 1 Month; YTD: Var% 12/31/19 to date



Source: Bloomberg

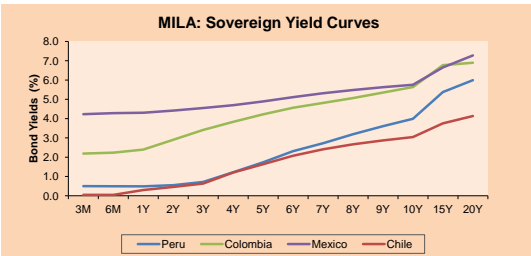
| Currency | Price | 1D* | 5D* | 30 D* | YTD* |
|------------------------|----------|--------|--------|--------|--------|
| ▼ New Sol (PEN) | 3,594.44 | -0.15% | 0.01% | -0.89% | 8.52% |
| ▼ Chilean Peso (CLP) | 735.80 | -0.89% | -2.00% | -2.75% | -2.12% |
| ▼ Colombian Peso (COP) | 3,439.45 | -0.76% | -1.05% | -5.22% | 4.95% |
| ▲ Mexican Peso (MXN) | 20.01 | 0.85% | 0.58% | -1.52% | 5.73% |

*Legend: Variation 1D: 1 day; 5D: 5 days; 1M: 1 Month; YTD: Var% 12/31/19 to date



Base: 10/09/20=100
Source: Bloomberg

| Fixed Income | Currency | Price | Bid Yield (%) | Ask Yield (%) | Duration |
|-----------------------|----------|---------|---------------|---------------|----------|
| PERU 7.35 07/21/25 | USD | 127.591 | 1.23 | 1.12 | 3.97 |
| PERU 4.125 08/25/27 | USD | 116.349 | 1.58 | 1.51 | 5.92 |
| PERU 8.75 11/21/33 | USD | 168.004 | 2.58 | 2.51 | 9.14 |
| PERU 6.55 03/14/37 | USD | 148.887 | 2.82 | 2.76 | 10.81 |
| PERU 5.625 11/18/2050 | USD | 153.394 | 2.95 | 2.92 | 17.66 |
| CHILE 2.25 10/30/22 | USD | 103.54 | 0.48 | 0.24 | 1.85 |
| CHILE 3.125 01/21/26 | USD | 110.573 | 1.04 | 0.95 | 4.72 |
| CHILE 3.625 10/30/42 | USD | 115.89 | 2.69 | 2.64 | 15.95 |
| COLOM 11.85 03/09/28 | USD | 165.54 | 2.16 | 1.95 | 5.45 |
| COLOM 10.375 01/28/33 | USD | 159.668 | 4.18 | 3.99 | 7.86 |
| COLOM 7.375 09/18/37 | USD | 144.783 | 3.79 | 3.71 | 10.90 |
| COLOM 6.125 01/18/41 | USD | 132.585 | 3.82 | 3.77 | 12.69 |
| MEX 4 10/02/23 | USD | 132.585 | 3.819 | 3.766 | 12.69 |
| MEX5.55 01/45 | USD | 128.531 | 3.77 | 3.72 | 14.55 |



Source: Bloomberg

Equity

| Largest gains | Exchange | Currency | Price | ▲ % |
|------------------|----------|----------|--------|------|
| FIBRA UNO | Mexico | MXN | 22.21 | 7.55 |
| VOLCAN CIA MIN-B | Peru | PEN | 0.45 | 4.65 |
| GRUPO F BANORT-O | Mexico | MXN | 112.74 | 4.60 |
| CEMEX SAB-CPO | Mexico | MXN | 10.99 | 3.78 |
| BUENAVENTURA-ADR | Peru | USD | 12.72 | 3.58 |

| Per Turnover | Exchange | Amount (US\$) |
|------------------|----------|---------------|
| WALMART DE MEXIC | Mexico | 101,083,311 |
| GRUPO F BANORT-O | Mexico | 38,855,350 |
| GRUPO MEXICO-B | Mexico | 36,288,140 |
| AMERICA MOVIL-L | Mexico | 30,576,195 |
| CEMEX SAB-CPO | Mexico | 22,331,874 |

| Largest losses | Exchange | Currency | Price | ▼ % |
|------------------|----------|----------|--------|-------|
| AGUAS ANDINAS-A | Chile | CLP | 226.57 | -5.60 |
| FALABELLA SA | Chile | CLP | 2506 | -4.53 |
| ISA SA | Colombia | COP | 24010 | -3.73 |
| GRUPO ARGOS SA | Colombia | COP | 13000 | -3.13 |
| GRUPO ENERGIA BO | Colombia | COP | 2541 | -3.02 |

| Per Volume | Exchange | Volume |
|------------------|----------|-------------|
| BANCO SANTANDER | Chile | 230,009,283 |
| ITAU CORPBANCA | Chile | 173,694,368 |
| BANCO DE CHILE | Chile | 75,588,164 |
| ENEL AMERICAS SA | Chile | 72,986,657 |
| ENEL CHILE SA | Chile | 47,473,053 |

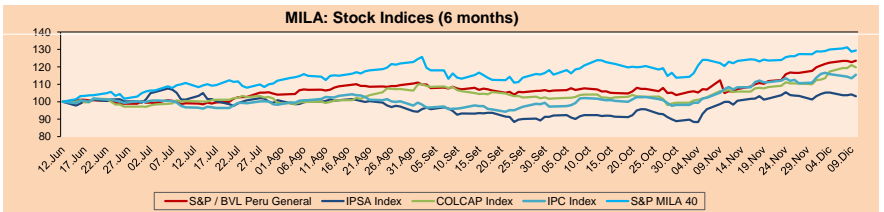
MILA

Peru: The General Index of the BVL ended today's session with a positive result of +0.66%. The index maintains an annual accumulated positive trend of +1.25% in local currency, while the adjusted return in dollars amounts to -6.70%. Then, the S&P / BVL Peru SEL changed by +0.07% while the S&P / BVL LIMA 25 by +0.61%. The PEN spot reached 5 / 3.5944. Headline: A bill that imposes caps on interest rates was included for debate in Plenary of Congress

Chile: The IPSA index ended the day with a negative return of -1.02%. The sectors most affected in the session were Non-Basic Consumer Products (-4.02%) and Basic Products (-1.69%). The worst performing stocks were Aguas Andinas SA (-5.60%) and SACI Falabella (-4.53%). Headline: Almost 3 million Chileans initiate second withdrawal of pension funds

Colombia: The COLCAP index had a negative result of -1.09%. The sectors with the worst returns on the day were Public Services (-3.40%) and Materials (-2.04%). The worst performing stocks were Promigas SA (-4.96%) and Interconectado Eléctrica SA (-3.73%). Headline: Fedesarrollo forecasts a contraction of the national economy of 6.5% for 2020

Mexico: The MEXBOL index closed the session with a positive result of +1.83%. The sectors with the best returns of the day were Finance (+2.74%) and Materials (+2.47%). The stocks with the best performance were Genera SAB de CV (+4.85%) and Grupo Financiero Banorte (+4.60%). Headline: S&P will assess Pemex's finances and its impact on Mexico's debt in 2021

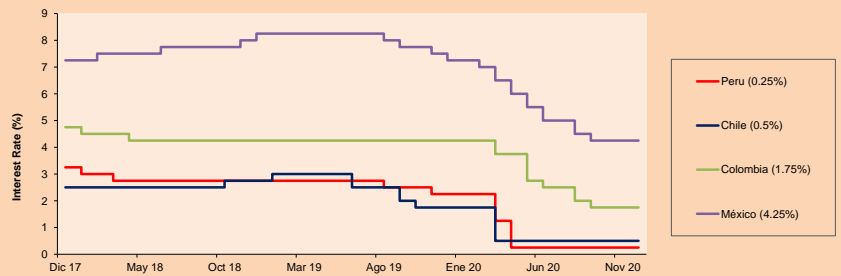


Base: 15/06/20=100
Source: Bloomberg

ETFs

| ETFs | Curr. | Close | 1D | 5D | 30 D | YTD | Exchange |
|--|-------|----------|-------|--------|--------|---------|-----------|
| ▲ iShares MSCI All Peru Caped Index Fund | USD | 34.41 | 0.50% | 0.12% | 15.12% | -7.13% | NYSE Arca |
| ▲ iShares MSCI All Chile Caped Index Fund | USD | 28.93 | 0.84% | 2.63% | 5.62% | -13.20% | Cboe BZX |
| ▲ Global X MSCI Colombia | USD | 10,946.4 | 0.89% | 7.58% | 18.58% | -21.25% | NYSE Arca |
| ▲ iShares MSCI Mexico Capped | USD | 42.64 | 1.38% | -0.84% | 9.64% | -5.31% | NYSE Arca |
| ▲ iShares MSCI Emerging Markets | USD | 51.08 | 1.29% | 1.49% | 7.06% | 13.84% | NYSE Arca |
| ▲ Vanguard FTSE Emerging Markets | USD | 49.56 | 1.35% | 1.12% | 6.15% | 11.45% | NYSE Arca |
| ▲ iShares Core MSCI Emerging Markets | USD | 61.4 | 1.25% | 1.52% | 7.44% | 14.21% | NYSE Arca |
| ▲ iShares JP Morgan Emerging Markets Bonds | USD | 60.53 | 0.68% | 0.41% | 3.56% | 3.19% | Cboe BZX |
| ▲ Morgan Stanley Emerging Markets Domestic | USD | 6.34 | 1.12% | 1.28% | 7.46% | -9.30% | New York |

MILA: Policy Rate



Source: Bloomberg

Capital Market Laboratory Coordinator: Economist Bruno Bellido
Collaboration: Piero Best, Luis Davila, Laura Delgado and Alonso Hernández
email: pulsobursatil@ulima.edu.pe
facebook: www.facebook.com/pulsobursatil.ul

PULSO BURSÁTIL

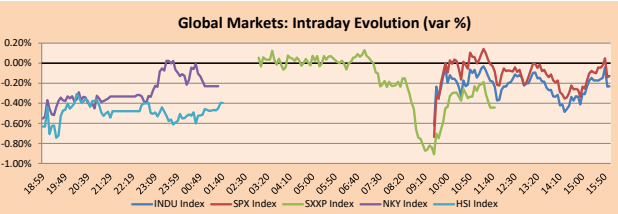
FACULTAD DE CIENCIAS EMPRESARIALES Y ECONÓMICAS
CARRERA DE ECONOMÍA
LABORATORIO DE MERCADO DE CAPITALES



WORLD

| Main Indices | Close | 1 D* | 5 D* | 1 M* | YTD* | Market Cap. (US\$ Mil.) |
|--------------------------------|-----------|--------|--------|--------|---------|-------------------------|
| ▼ Dow Jones (USA) | 29,999.26 | -0.23% | 0.10% | 2.05% | 5.12% | 9,254,482 |
| ▲ Standard & Poor's 500 (EEUU) | 3,668.10 | -0.13% | 0.04% | 2.67% | 13.54% | 31,736,997 |
| ▲ NASDAQ Composite (USA) | 12,405.81 | -0.54% | 0.23% | 5.26% | 38.26% | 19,988,117 |
| ▲ Stoxx EUROPE 600 (Europe) | 393.15 | -0.44% | 0.37% | 1.88% | -5.46% | 8,883,521 |
| ▼ DAX (Germany) | 13,295.73 | -0.33% | 0.32% | 0.60% | 0.39% | 998,174 |
| ▲ FTSE 100 (United Kingdom) | 6,599.78 | 0.54% | 1.69% | 3.41% | -12.50% | 1,424,091 |
| ▲ CAC 40 (France) | 5,549.65 | 0.05% | -0.44% | 1.92% | -7.17% | 1,465,994 |
| ▲ IBEX 35 (Spain) | 8,182.30 | -0.84% | -0.22% | 4.99% | -14.31% | 440,275 |
| ▼ MSCI AC Asia Pacific Index | 194.23 | -0.29% | 0.56% | 5.28% | 13.81% | 24,746,010 |
| ▼ HANG SENG (Hong Kong) | 26,410.59 | -0.35% | -1.19% | 0.98% | -6.05% | 4,025,376 |
| ▲ SHANGHAI SEC Comp. (China) | 3,373.29 | 0.04% | -2.00% | -0.11% | 9.46% | 6,276,164 |
| ▼ NIKKEI 225 (Japan) | 26,756.24 | -0.23% | -0.20% | 4.92% | 12.43% | 3,719,730 |
| ▼ S&P / ASX 200 (Australia) | 6,683.12 | -0.67% | 1.03% | 3.00% | -0.61% | 1,596,224 |
| ▼ KOSPI (South Korea) | 2,746.46 | 1.83% | -0.95% | 11.44% | 26.05% | 1,661,561 |

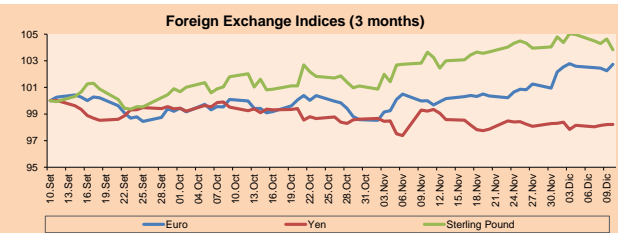
*Legend: Variation 1D: 1 Day; 5D: 5 Days; 1M: 1 Month; YTD: Var.% 12/31/19 to date



Source: Bloomberg

| Currency | Price | 1 D* | 5 D* | 1 M* | YTD* |
|--------------------|----------|--------|--------|--------|--------|
| ▲ Euro | 1.2138 | 0.47% | -0.05% | 2.73% | 8.25% |
| ▲ Yen | 104.2400 | 0.01% | 0.39% | -1.01% | -4.02% |
| ▼ Sterling Pound | 1.3295 | -0.78% | -1.15% | 0.17% | 0.29% |
| ▲ Yuan | 6.5440 | 0.01% | 0.02% | -1.10% | -6.02% |
| ▼ Hong Kong Dollar | 7.7513 | 0.00% | 0.01% | -0.04% | -0.51% |
| ▼ Brazilian Real | 5.0192 | -2.88% | -2.69% | -7.27% | 24.53% |
| ▲ Argentine Peso | 82.1346 | 0.11% | 0.69% | 3.40% | 37.18% |

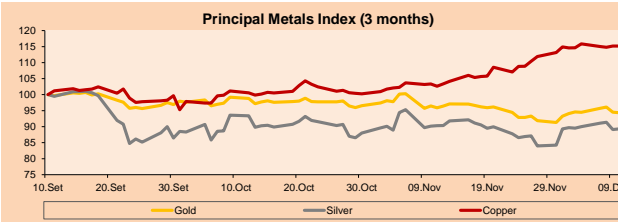
*Legend: Variation 1D: 1 Day; 5D: 5 Days; 1M: 1 Month; YTD: Var.% 12/31/19 to date



Base: 10/09/20=100
Source: Bloomberg

| Commodities | Close | 1 D* | 5 D* | 1 M* | YTD* |
|--------------------------------------|-----------|--------|--------|--------|---------|
| ▼ Oro (US\$ Oz. T) (LME) | 1,836.57 | -0.16% | -0.24% | -2.77% | 21.04% |
| ▲ Plata (US\$ Oz. T) (LME) | 24.00 | 0.22% | -0.26% | -0.96% | 34.44% |
| ▲ Cobre (US\$ TM) (LME) | 7,705.50 | 0.00% | 0.48% | 11.46% | 25.31% |
| ▲ Zinc (US\$ TM) (LME) | 2,827.00 | 0.00% | 3.40% | 7.52% | 24.02% |
| ▲ Petróleo WTI (US\$ Barril) (NYM) | 46.78 | 2.77% | 2.50% | 12.26% | -16.51% |
| ▼ Estano (US\$ TM) (LME) | 19,454.75 | 0.00% | 2.88% | 6.44% | 13.25% |
| ▼ Plomo (US\$ TM) (LME) | 2,101.50 | 0.00% | 4.14% | 14.76% | 9.82% |
| ▼ Acaúcar #11 (US\$ Libra) (NYB-ICE) | 14.66 | -2.07% | -0.34% | -0.14% | 1.95% |
| ▲ Cacao (US\$ TM) (NYB-ICE) | 2,567.00 | 0.71% | -3.17% | 8.91% | 5.55% |
| ▲ Café Arabica (US\$ TM) (NYB-ICE) | 121.05 | 3.42% | 0.83% | 10.05% | -13.57% |

*Legend: Variación 1D: 1 Día; 5D: 5 Días; 1M: 1 Mes; YTD: Var.% 31/12/19 a la fecha



Base: 10/09/20=100
Source: Bloomberg

Equity

Germany (Stocks from DAX Index)

| Largest gains | Curr. | Price | ▲% | Exchange | Largest losses | Curr. | Price | ▼% | Exchange |
|---------------|-------|-------|------|----------|----------------|-------|--------|-------|----------|
| VNA GY | EUR | 56.88 | 1.68 | Xetra | IFX GY | EUR | 29.045 | -2.25 | Xetra |
| DWNI GY | EUR | 42.51 | 0.95 | Xetra | DBK GY | EUR | 9.107 | -2.11 | Xetra |
| BAS GY | EUR | 64.04 | 0.95 | Xetra | DAI GY | EUR | 56.32 | -2.09 | Xetra |
| ADS GY | EUR | 287.6 | 0.91 | Xetra | VOW3 GY | EUR | 144.4 | -2.06 | Xetra |

Europe (Stocks from STOXX EUROPE 600)

| Largest gains | Curr. | Price | ▲% | Exchange | Largest losses | Curr. | Price | ▼% | Exchange |
|---------------|-------|--------|------|----------|----------------|-------|-------|-------|--------------|
| INCH LN | GBP | 667 | 5.71 | Londres | OCDO LN | GBP | 2159 | -7.18 | Londres |
| TKA GY | EUR | 6.652 | 4.59 | Xetra | NETW LN | GBP | 295.6 | -7.15 | Londres |
| BPI LN | GBP | 284.75 | 4.46 | Londres | PSN LN | GBP | 251.4 | -6.37 | Londres |
| SMDS LN | GBP | 372.1 | 3.79 | Londres | AMS SE | CHF | 19.04 | -5.74 | SIX Swiss Ex |

Global Overview:

United States:

US markets closed today's session with mixed returns, caused by new reports of unemployment benefits and the untimely increase in coronavirus cases. Applications to receive unemployment benefit grew to a maximum of 3 months in which 853,000 applications were reached. Likewise, the number of COVID-19 infections is still the highest in the world and the previous day the highest death in a day was reported with more than 3,000 deaths. On the other hand, negotiations in Congress on another package of financial aid for workers and businesses and it is expected that a plan is needed to prevent some 12 million Americans from losing unemployment benefits by the end of the year. With respect to sectors, the energy index, SPNY + 2.93%, closed in a six-month high when a price in a barrel of Brent crude rose above \$50 for the first time since the beginning of March. In corporate stocks, Airbnb Inc. gained +112.81% after launching the largest public offering in history after selling 51.5 million shares for \$ 3.5 billion. In conclusion, the main indexes S&P 500 -0.13%, DJIA -0.23% ended lower while the NASDAQ rose +0.54%.

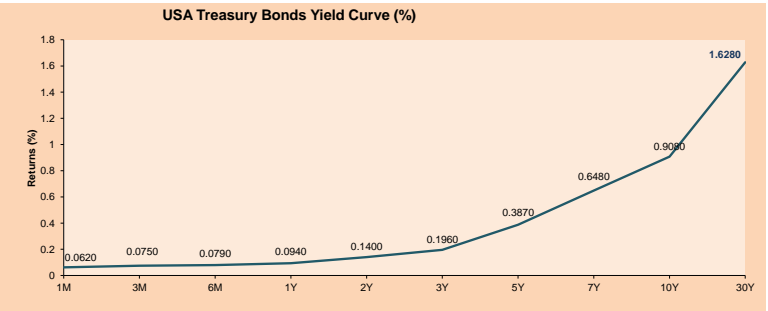
Europe:

European markets ended trading with mixed results, as the odds of concluding a Brexit trade deal are getting slimmer. Analysts warn that the odds of reaching a deal are shrinking rapidly, as Sunday's deadline draws closer. Mujtaba Rahman of the Eurasia Group noted that he had lowered the chances of a deal from 60% to 55%. The main topics in the discussions continue to be fishing rights and regulatory requirements. Sentiment plummeted further after Ursula von der Leyen, president of the European Commission, reported that the European Union would issue no-deal contingency measures. The implications of not reaching an agreement would be tariffs and higher trade costs for both sides. On the other hand, Florence Barjau of Uxor Asset Management commented that the lower performance on the FTSE 100 in 2020 was due not only to the risk of Brexit, but also to the effect of the pandemic, according to CNBC. However, there is still hope that the vaccination campaign at the beginning of the week will support the recovery of the economy. Thus, the FTSE 100 +0.54% and CAC +0.05% rose; On the other hand, the STOXX 600 -0.44%, DAX -0.33% and FTSE MIB -0.25% fell, among other indices.

Asia:

Asian markets closed today's session with mixed returns amid uncertainty regarding the delisting of Chinese companies on the North American stock market. In China, most stocks ended lower after S&P Dow Jones complied with removing some Chinese companies from the North American indices. This would be in line with seeking to discourage investment firms from buying shares in Chinese companies designated by the Defense Department as organizations that support the Asian nation's military branches. On the other hand, new bank loans increased more than expected in November, while overall credit growth slowed, as the central bank maintained an accommodative stance. In Japan, SoftBank +10.91% posted a rise after its stakes in DoorDash Inc. made a profit of \$ 11.2 billion after the IPO on the US stock exchange. Meanwhile, in Australia the shares they closed lower following increased tensions between Australia and China after Beijing said it would temporarily impose anti-subsidy tariffs on some Australian wine imports from December 11. Thus, the main indexes Nikkei 225 -0.23%, Hang Seng -0.35%, ASX 200 -0.67%, CSI 300 -0.04% and Shanghai Composite +0.04% closed with mixed results.

| ETFs | Curr. | Close | 1D | 5D | 30 D | YTD | Exchange |
|------------------------------|-------|--------|--------|---------|---------|---------|-----------|
| SPDR S&P 500 ETF TRUST | USD | 366.73 | -0.03% | 0.01% | 3.58% | 13.94% | NYSE Arca |
| ISHARES MSCI EMERGING MARKET | USD | 51.08 | 1.29% | 1.49% | 7.06% | 13.84% | NYSE Arca |
| ISHARES IBOXX HIGH YLD CORP | USD | 86.77 | 0.18% | 0.32% | 1.18% | -1.33% | NYSE Arca |
| FINANCIAL SELECT SECTOR SPDR | USD | 28.75 | 0.17% | 0.42% | 5.89% | -6.60% | NYSE Arca |
| VANECK GOLD MINERS | USD | 35.24 | -0.45% | -0.76% | -6.18% | 20.36% | NYSE Arca |
| ISHARES RUSSELL 2000 ETF | USD | 191.24 | 0.97% | 3.98% | 10.74% | 15.43% | NYSE Arca |
| SPDR GOLD SHARES | USD | 172.17 | -0.19% | -0.37% | -1.99% | 20.48% | NYSE Arca |
| ISHARES 20+ YEAR TREASURY BO | USD | 158.21 | 0.89% | 0.44% | 1.97% | 16.78% | NASDAQ GM |
| INVESCO QQQ TRUST SERIES 1 | USD | 302.52 | 0.40% | -0.58% | 6.74% | 42.29% | NASDAQ GM |
| ISHARES NASDAQ BIOTECHNOLOGY | USD | 149.82 | 1.50% | 2.31% | 8.77% | 24.32% | NASDAQ GM |
| ENERGY SELECT SECTOR SPDR | USD | 41.60 | 3.07% | 7.97% | 21.89% | -30.71% | NYSE Arca |
| PROSHARES ULTRA VIX ST FUTUR | USD | 11.28 | 1.25% | -0.62% | -18.38% | -12.45% | NYSE Arca |
| UNITED STATES OIL FUND LP | USD | 32.11 | 2.46% | 2.75% | 11.07% | -68.67% | NYSE Arca |
| ISHARES MSCI BRAZIL ETF | USD | 37.39 | 4.88% | 5.41% | 17.80% | -21.20% | NYSE Arca |
| SPDR S&P OIL & GAS EXP & PR | USD | 63.70 | 5.64% | 13.24% | 30.96% | -32.81% | NYSE Arca |
| UTILITIES SELECT SECTOR SPDR | USD | 62.14 | -0.51% | -1.43% | -6.22% | -3.84% | NYSE Arca |
| ISHARES US REAL ESTATE ETF | USD | 84.01 | -0.58% | -1.15% | -0.26% | -9.74% | NYSE Arca |
| SPDR S&P BIOTECH ETF | USD | 142.35 | 3.69% | 6.45% | 16.72% | 49.67% | NYSE Arca |
| ISHARES IBOXX INVESTMENT GRA | USD | 137.14 | 0.50% | -0.45% | 1.73% | 7.17% | NYSE Arca |
| ISHARES JP MORGAN USD EMERGI | USD | 114.88 | 0.50% | 0.16% | 1.48% | 0.26% | NASDAQ GM |
| REAL ESTATE SELECT SECT SPDR | USD | 36.25 | -0.55% | -1.60% | -1.41% | -6.26% | NYSE Arca |
| ISHARES CHINA LARGE-CAP ETF | USD | 46.57 | 1.24% | -1.19% | -1.17% | 6.74% | NYSE Arca |
| CONSUMER STAPLES SPDR | USD | 67.17 | -0.44% | 0.09% | 1.43% | 6.65% | NYSE Arca |
| VANECK JR GOLD MINERS | USD | 51.51 | 0.14% | -1.23% | -4.63% | 21.89% | NYSE Arca |
| SPDR BBG BARC HIGH YIELD BND | USD | 108.15 | 0.17% | 0.30% | 1.21% | -1.27% | NYSE Arca |
| VANGUARD REAL ESTATE ETF | USD | 84.47 | -0.44% | -0.76% | 0.63% | -8.97% | NYSE Arca |
| GRAYSCALE BITCOIN TRUST BTC | USD | 21.47 | 6.98% | -10.54% | 30.04% | 162.15% | OTC US |



Source: Bloomberg

Capital Market Laboratory Coordinator: Economist Bruno Bellido
Collaboration: Piero Best, Luis Davila, Laura Delgado and Alonso Hernandez
email: pulsoBursatil@ulima.edu.pe
facebook: www.facebook.com/pulsoBursatil.ulima

LIMA

Stocks

| Ticker | Currency | Price | 1D* | 5D* | 30D* | YTD* | Frequency | Volume (US\$) | Beta | Dividend Yield (%) | Price Earning | Market Cap. (M US\$) | Economic Sector* | Index Weight |
|-----------------|----------|--------|--------|--------|--------|---------|-----------|---------------|------|--------------------|---------------|----------------------|------------------|--------------|
| ▼ ALICORC1 PE** | S/. | 7.30 | -1.02% | 3.27% | 12.08% | 4.78% | 100.00% | 292,217 | 0.71 | 3.42 | 16.79 | 1,735.60 | Industrial | 3.53% |
| ▲ ATACOB1 PE** | S/. | 0.14 | 3.70% | -3.45% | 12.90% | -15.15% | 52.63% | 29,538 | 1.05 | 0.00 | - | 36.80 | Mining | 1.02% |
| ▲ BACKUS1 PE** | S/. | 20.15 | 0.25% | 3.33% | 0.80% | -29.30% | 78.95% | 29,570 | 0.50 | 3.24 | 9.12 | 8,390.51 | Industrial | 0.82% |
| ▲ BAP PE** | US\$ | 164.00 | 0.55% | -0.12% | 45.39% | -22.89% | 100.00% | 2,652,560 | 1.62 | 5.37 | - | 15,478.70 | Diverse | 5.82% |
| ▲ BVN PE** | US\$ | 12.72 | 3.58% | 6.00% | 4.69% | -16.86% | 94.74% | 878,236 | 1.35 | 0.20 | - | 3,506.07 | Mining | 5.88% |
| ▼ CASAGRC1 PE** | S/. | 5.77 | -0.52% | -5.56% | 29.08% | 90.43% | 94.74% | 24,446 | 0.62 | 1.86 | 10.36 | 135.22 | Agricultural | 1.31% |
| ▼ BBVAC1 PE** | S/. | 2.30 | -0.86% | -0.86% | -3.36% | -25.61% | 100.00% | 89,801 | 0.78 | 3.75 | 11.97 | 4,177.91 | Finance | 2.85% |
| ▼ CORARE1 PE** | S/. | 0.95 | 3.26% | 7.95% | 23.38% | 4.40% | 94.74% | 10,871 | 0.56 | 4.98 | 6.75 | 370.18 | Industrial | 1.72% |
| - CPACASC1 PE** | S/. | 5.80 | 0.00% | -5.23% | 7.41% | -5.69% | 100.00% | 47,034 | 0.54 | 3.97 | 18.71 | 689.39 | Industrial | 2.38% |
| ▲ CVERDEC1 PE** | US\$ | 21.40 | 2.39% | 1.42% | 12.75% | 10.88% | 100.00% | 254,016 | 0.65 | 0.00 | 34.79 | 7,491.20 | Mining | 5.25% |
| ▲ ENGEPEC1 PE** | S/. | 2.02 | 0.50% | 0.50% | 0.50% | -12.17% | 47.37% | 32,467 | 0.48 | 12.49 | 10.15 | 1,595.34 | Public Services | 1.44% |
| ▲ ENDISPC1** | S/. | 5.33 | 2.50% | 1.33% | 4.51% | -27.48% | 73.68% | 78,468 | 0.46 | 0.38 | 10.06 | 946.90 | Public Services | 0.98% |
| ▼ FERREY1 PE** | S/. | 1.76 | -1.68% | 1.73% | 4.14% | -19.63% | 100.00% | 289,260 | 0.59 | 4.35 | 35.33 | 477.74 | Diverse | 4.90% |
| ▲ AENZAC1 PE** | S/. | 1.78 | 1.71% | 1.71% | 18.67% | 4.71% | 100.00% | 58,592 | 0.78 | 0.00 | - | 431.79 | Diverse | 4.05% |
| ▲ IFS PE** | US\$ | 31.50 | 0.48% | 3.11% | 53.66% | -22.98% | 94.74% | 1,537,089 | 1.33 | 5.56 | 31.30 | 3,636.60 | Diverse | 7.22% |
| ▼ INRETC1 PE** | US\$ | 36.20 | -0.28% | 0.56% | 9.70% | 0.56% | 100.00% | 233,526 | 0.57 | 1.56 | 29.17 | 3,721.63 | Diverse | 5.28% |
| ▼ LUSURC1 PE** | S/. | 26.60 | -1.48% | 0.00% | 2.31% | 3.30% | 89.47% | 376,344 | 0.48 | 2.44 | 26.10 | 3,603.64 | Public Services | 1.81% |
| - MINSUR1 PE** | S/. | 1.85 | 0.00% | 4.52% | 10.78% | 18.59% | 73.68% | 80 | 0.76 | 0.00 | - | 1,483.85 | Mining | 3.09% |
| ▲ PML PE** | US\$ | 0.10 | 5.26% | 9.89% | 11.11% | 78.57% | 63.16% | 10,736 | 1.24 | 0.00 | - | 26.42 | Mining | 2.12% |
| ▲ RELAPAC1 PE** | S/. | 0.07 | 6.45% | 6.45% | 3.13% | -46.34% | 94.74% | 29,710 | 0.51 | 0.00 | - | 152.76 | Industrial | 2.12% |
| ▲ SCCO PE** | US\$ | 59.06 | -0.46% | -2.62% | 9.78% | 39.19% | 84.21% | 26,950 | 0.79 | 2.54 | 34.40 | 45,657.71 | Mining | 2.14% |
| ▼ SIDERC1 PE** | S/. | 0.89 | -1.11% | 11.25% | 20.27% | 0.00% | 89.47% | 24,236 | 0.86 | 38.45 | 10.58 | 304.04 | Industrial | 1.43% |
| ▲ TV PE** | US\$ | 0.16 | 1.95% | 1.29% | 26.61% | -9.25% | 84.21% | 75,067 | 1.49 | 0.00 | - | 155.29 | Mining | 2.93% |
| ▲ UNACEMC1 PE** | S/. | 1.56 | 0.65% | 2.63% | 15.56% | -22.00% | 94.74% | 92,765 | 0.79 | 1.67 | 75.91 | 789.08 | Industrial | 3.00% |
| ▲ VOLCABC1 PE** | S/. | 0.45 | 4.65% | 10.84% | 21.62% | 1.12% | 100.00% | 432,397 | 0.80 | 0.00 | - | 1,805.50 | Mining | 5.90% |
| ▼ NEXAPEC1 PE** | S/. | 2.80 | -1.75% | 0.00% | 8.95% | -18.84% | 57.89% | 6,582 | 0.99 | 0.00 | - | 1,029.90 | Mining | 1.56% |

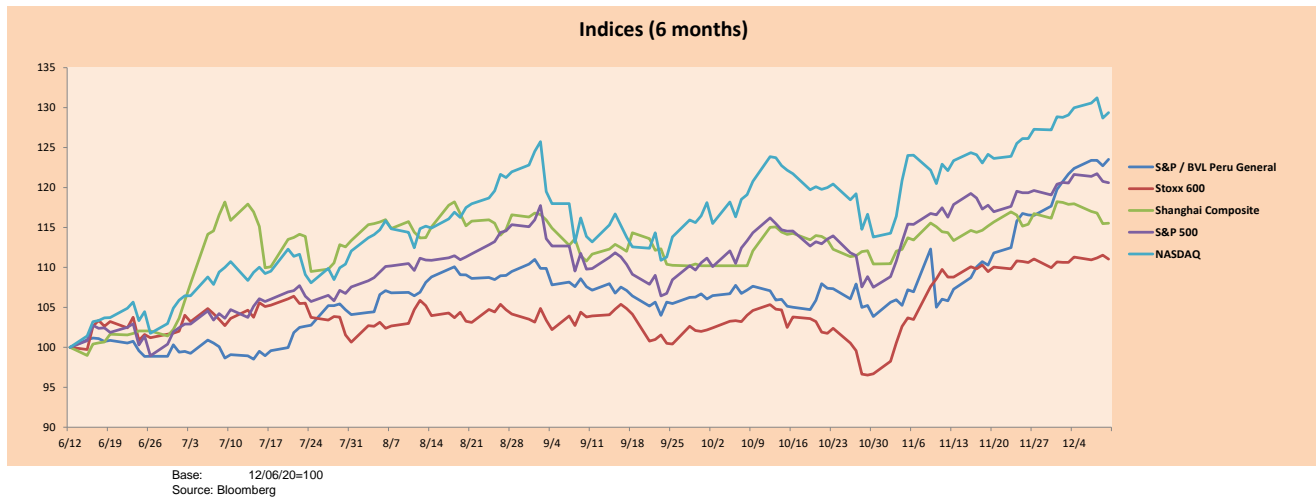
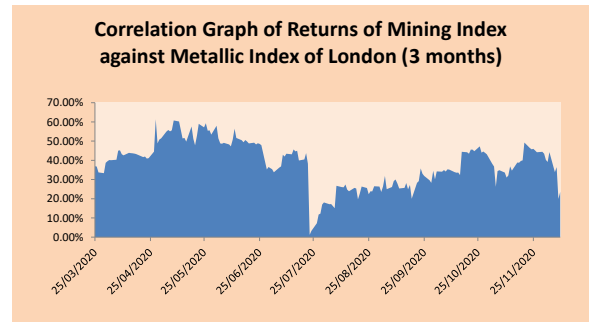
Quantity of shares: 26
Source: Bloomberg, Economática
* Bloomberg Industry Classification System
** PER is used in the stock market and original currency of the instrument
*Legend: Variation 1D: 1 Day; 5D: 5 Days; 1M: 1 Month; YTD: Var.% 12/31/19 to date

Sectorial Indices

| | Close | 1D* | 5D* | 30D* | YTD* | Beta |
|-----------------------|----------|--------|-------|--------|---------|------|
| ▲ S&P/BVLMining | 369.36 | 0.96% | 0.96% | 7.94% | 21.24% | 0.94 |
| ▼ S&P/BVLConsumer | 1,059.79 | -0.43% | 1.83% | 6.71% | -7.05% | 0.36 |
| ▲ S&P/BVLIndustrials | 195.26 | 0.47% | 1.81% | 13.70% | -7.51% | 0.49 |
| ▲ S&P/BVLFinancials | 1,049.43 | 0.35% | 0.24% | 42.22% | -11.04% | 1.67 |
| ▲ S&P/BVLConstruction | 215.50 | 1.26% | 1.80% | 15.72% | -4.91% | 0.50 |
| ▼ S&P/BVLPublicSvcs | 621.38 | -0.24% | 0.68% | 2.01% | -4.62% | 0.07 |
| ▼ S&P/BVLElectricUtil | 606.62 | -0.24% | 0.68% | 2.01% | -4.63% | 0.07 |

S&P/BVLConstructionTRPEN

*Legend: Variation 1D: 1 Day; 5D: 5 Days; 1M: 1 Month; YTD: Var.% 12/31/19 to date



Base: 12/06/20=100
Source: Bloomberg

Capital Market Laboratory Coordinator: Economist Bruno Bellido
Collaboration: Piero Best, Luis Davila, Laura Delgado and Alonso Hernández
email: pulsohorsatil@ulima.edu.pe
facebook: www.facebook.com/pulsohorsatil.ul

The content of this document is just for informational purposes. The information and opinions expressed should not be consider as recommendations for future decisions. Under any circumstances, the Capital Market Laboratory of University of Lima will be responsible for the use of the statements in this document.

SOVEREIGN RATING

RISK RATINGS

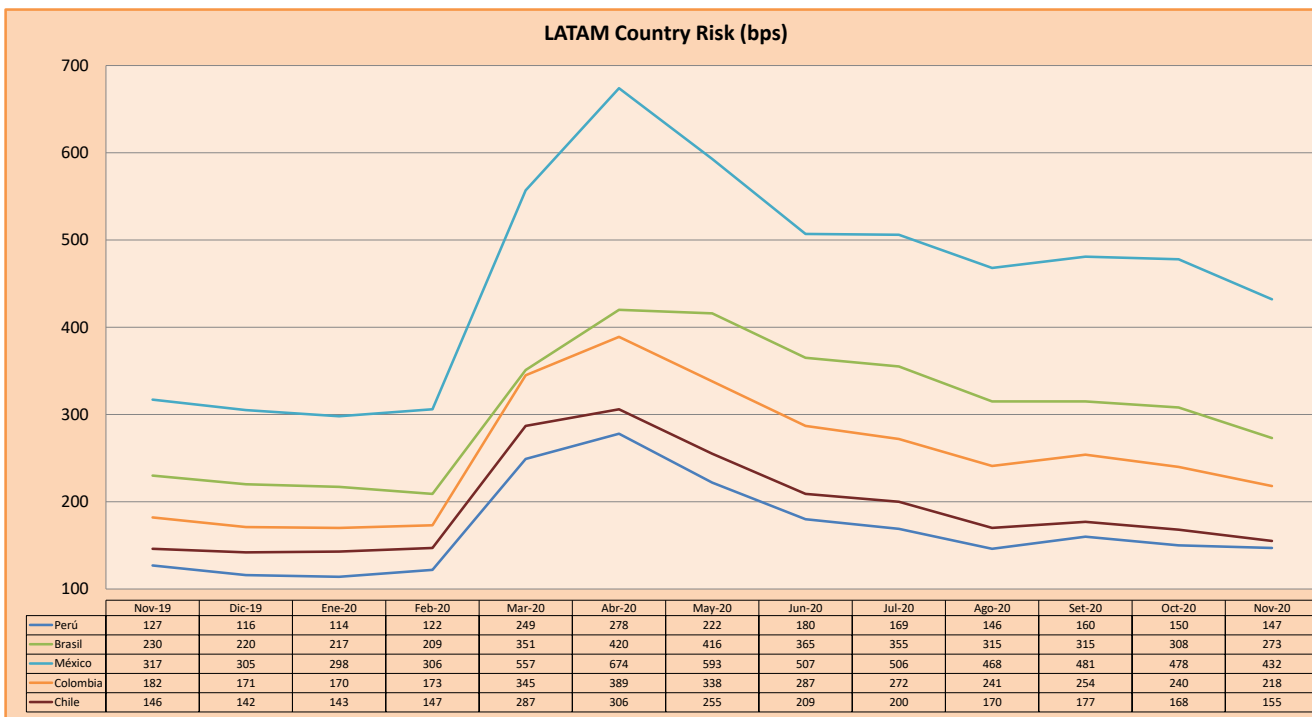
| Moody's | S&P | Fitch | |
|---------|------|---------|--|
| Aaa | AAA | AAA | Prime |
| Aa1 | AA+ | AA+ | High credit quality |
| Aa2 | AA | AA | |
| Aa3 | AA- | AA- | |
| A1 | A+ | A+ | Medium-high grade, with low credit risk |
| A2 | A | A | |
| A3 | A- | A- | |
| Baa1 | BBB+ | BBB+ | Moderate Credit Risk |
| Baa2 | BBB | BBB | |
| Baa3 | BBB- | BBB- | |
| Ba1 | BB+ | BB+ | It has speculative elements and it is subject to substantial credit risk |
| Ba2 | BB | BB | |
| Ba3 | BB- | BB- | |
| B1 | B+ | B+ | It is considered speculative and it has high credit risk |
| B2 | B | B | |
| B3 | B- | B- | |
| Caa1 | CCC+ | | Bad credit conditions and it is subject to high credit risk |
| Caa2 | CCC | | |
| Caa3 | CCC- | CCC | |
| Ca | C | | Very close to default or in default |
| | | DDD | |
| C | D | DD D | |

Source: Bloomberg

| Latin America Credit Rating | | | |
|-----------------------------|---------|-------|------|
| Clasificadora de riesgo | | | |
| Country | Moody's | Fitch | S&P |
| Peru | A3 | BBB+ | BBB+ |
| México | Ba2 | BB- | BB- |
| Venezuela | C | WD | SD |
| Brazil | Ba2 | BB- | BB- |
| Colombia | Baa2 | BBB- | BBB- |
| Chile | A1 | A- | A+ |
| Argentina | Ca | WD | CCC+ |
| Panama | Baa1 | BBB | BBB |

Source: Bloomberg

LATAM Country Risk (bps)



Source: BCRP

Capital Market Laboratory Coordinator: Economist Bruno Bellido
Collaboration: Piero Best, Luis Davila, Laura Delgado and Alonso Hernández
email: pulsobursatil@ulima.edu.pe
facebook: www.facebook.com/pulsobursatil.ul