

PULSO BURSÁTIL

FACULTAD DE CIENCIAS EMPRESARIALES Y ECONÓMICAS
CARRERA DE ECONOMÍA
LABORATORIO DE MERCADO DE CAPITALES

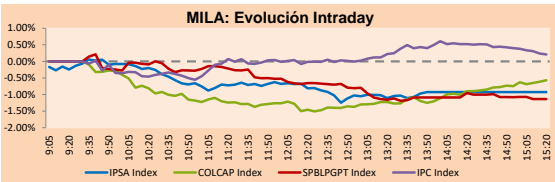


MILA

Lima, december 11, 2020

Main Indexes	Close	1 D	5 D	1 M	YTD	Cap. Burs. (US\$ bill)
▼ IPSA (Chile)	4,085.89	-0.50%	-2.46%	2.01%	-12.50%	109.02
▼ IGPA (Chile)	20,473.05	-0.44%	-2.18%	2.39%	-12.48%	134.64
▲ COLSC (Colombia)	1,014.90	-0.97%	1.68%	11.66%	3.77%	5.92
▲ COLCAP (Colombia)	1,377.67	0.67%	6.13%	13.87%	-17.13%	85.08
▼ S&P/BVL (Perú)*	20,474.00	-1.48%	0.00%	13.44%	-0.25%	101.17
▼ S&P/BVL SEL (Perú)	534.07	-1.52%	-0.24%	11.32%	0.50%	83.23
▼ S&P/BVL LIMA 25	24,946.28	-1.18%	1.11%	11.55%	-3.13%	100.27
▲ IPC (México)	43,612.31	0.22%	-0.08%	6.91%	0.16%	275.26
▼ S&P MILA 40	510.24	-0.40%	1.64%	12.23%	-15.39%	5,541.38

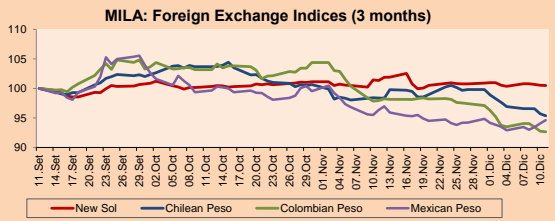
*Legend: Variation 1D: 1 day; 5D: 5 days; 1M: 1 Month; YTD: Var% 12/31/19 to date



Source: Bloomberg

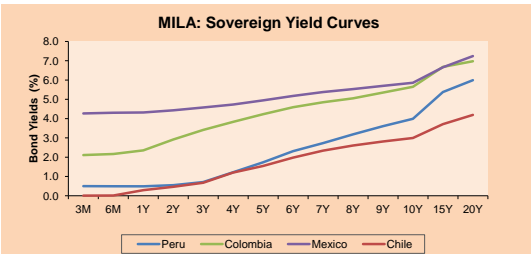
Currency	Price	1D*	5D*	30 D*	YTD*
▼ New Sol (PEN)	3,592.25	-0.05%	0.13%	-0.83%	8.46%
▼ Chilean Peso (CLP)	733.22	-0.35%	-1.59%	-3.06%	-2.46%
▼ Colombian Peso (COP)	3,435.54	-0.11%	-0.91%	-5.42%	4.83%
▲ Mexican Peso (MXN)	20.13	0.60%	1.84%	-1.79%	6.37%

*Legend: Variation 1D: 1 day; 5D: 5 days; 1M: 1 Month; YTD: Var% 12/31/19 to date



Base: 11/09/20=100
Source: Bloomberg

Fixed Income	Currency	Price	Bid Yield (%)	Ask Yield (%)	Duration
PERU 7.35 07/21/25	USD	127.657	1.21	1.11	3.96
PERU 4.125 08/25/27	USD	116.447	1.57	1.50	5.92
PERU 8.75 11/21/33	USD	168.002	2.58	2.51	9.13
PERU 6.55 03/14/37	USD	148.848	2.82	2.76	10.81
PERU 5.625 11/18/2050	USD	153.664	2.94	2.91	17.71
CHILE 2.25 10/30/22	USD	103.535	0.49	0.23	1.84
CHILE 3.125 01/21/26	USD	110.589	1.04	0.95	4.71
CHILE 3.625 10/30/42	USD	116.096	2.68	2.62	15.94
COLOM 11.85 03/09/28	USD	165.576	2.09	2.01	5.45
COLOM 10.375 01/28/33	USD	159.977	4.15	3.97	7.85
COLOM 7.375 09/18/37	USD	144.888	3.79	3.70	10.91
COLOM 6.125 01/18/41	USD	132.889	3.81	3.74	12.71
MEX 4 10/02/23	USD	132.889	3.812	3.738	12.71
MEX5.55 01/45	USD	128.621	3.76	3.72	14.59



Source: Bloomberg

Equity

Largest gains	Exchange	Currency	Price	▲%
GRUPO AEROPORTUA	Mexico	MXN	125.87	3.94
CMPC	Chile	CLP	1770.00	2.91
CEMENTOS ARGOS	Colombia	COP	5600.00	2.75
WALMART DE MEXIC	Mexico	MXN	57.00	2.70
GRUPO ARGOS SA	Colombia	COP	13300.00	2.31

Per Turnover	Exchange	Amount (US\$)
WALMART DE MEXIC	Mexico	54,210,325
AMERICA MOVIL-L	Mexico	49,138,831
GRUPO F BANOT-O	Mexico	39,477,337
GRUPO MEXICO-B	Mexico	28,085,348
FIBRA UNO	Mexico	17,807,195

Largest losses	Exchange	Currency	Price	▼%
COLBUN SA	Chile	CLP	119.01	-4.52
BANCO CRED INVER	Chile	CLP	26736	-3.13
PARQUE ARAUCO	Chile	CLP	1120	-2.52
BANCO SANTANDER	Chile	CLP	34.61	-2.23
ORBIA ADVANCE CO	Mexico	MXN	44.27	-2.21

Per Volume	Exchange	Volume
ITAU CORPBANCA	Chile	331,676,697
BANCO SANTANDER	Chile	169,341,335
AMERICA MOVIL-L	Mexico	69,515,417
ENEL AMERICAS SA	Chile	38,784,384
BANCO DE CHILE	Chile	36,809,811

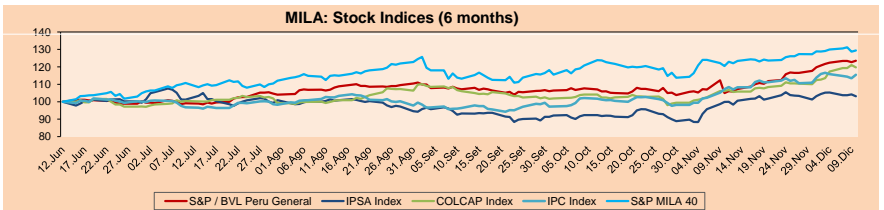
MILA

Peru: The General Index of the BVL ended today's session with a negative result of -1.48%. The index maintains an annual accumulated negative trend of -0.25% in local currency, while the adjusted return in dollars amounts to -8.03%. Then, the S&P / BVL Peru SEL varied by -1.52% while the S&P / BVL LIMA 25 by -1.18%. The PEN spot reached S / 3.5925. Headline: Change of CAS workers regime would raise the cost of state payroll by 25%

Chile: The IPSA index ended the day with a negative return of -0.50%. The sectors most affected during the session were First Needs Products (-0.93%) and Public Services (-0.63%). The worst performing stocks were Colbun SA (-4.52%) and Cencosud SA (-1.54%). Headline: Colombian ISA will invest more than US \$ 4,800M in Chile until 2023

Colombia: The COLCAP index had a positive result of +0.67%. The sectors with the best returns on the day were Materials (+0.72%) and Public Services (+0.65%). The securities with the best performance were Cementos Argos SA (+2.75%) and Corporación Financiera Colombi (+1.94%). Headline: Tax collection in Colombia exceeds goal in November

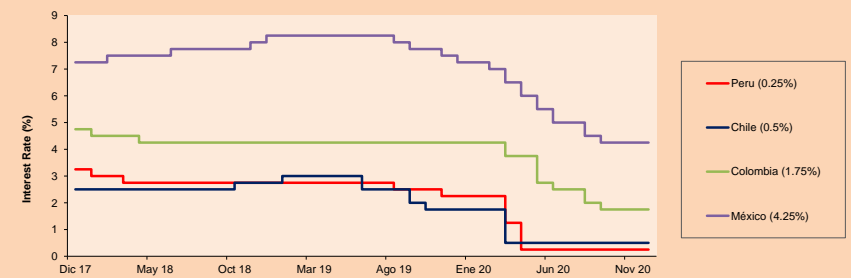
Mexico: The MEXBOL index closed the session with a positive result of +0.22%. The sectors with the best returns of the day were Real Estate (+1.22%) and Industrial (+0.70%). The stocks with the best performance were Grupo Aeroportuario del Centro (+3.94%) and Banco del Bajío SA (+3.21%). Headline: Mexican Senate approves reform that establishes salary increases above inflation



Base: 15/06/20=100
Source: Bloomberg

ETFs	Curr.	Close	1D	5D	30 D	YTD	Exchange
▼ iShares MSCI All Peru Caped Index Fund	USD	33.81	-1.74%	-1.86%	11.51%	-8.74%	NYSE Arca
▼ iShares MSCI All Chile Caped Index Fund	USD	28.66	-0.93%	-0.86%	4.52%	-14.01%	Cboe BZX
▼ Global X MSCI Colombia	USD	10.845	-0.93%	3.38%	17.37%	-21.98%	NYSE Arca
▼ iShares MSCI Mexico Capped	USD	42.3	-0.80%	-1.86%	8.24%	-6.06%	NYSE Arca
▼ iShares MSCI Emerging Markets	USD	50.72	-0.70%	-0.26%	5.62%	13.04%	NYSE Arca
▼ Vanguard FTSE Emerging Markets	USD	49.23	-0.67%	-0.22%	4.99%	10.70%	NYSE Arca
▼ iShares Core MSCI Emerging Markets	USD	61.01	-0.64%	-0.16%	6.14%	13.49%	NYSE Arca
▼ iShares JP Morgan Emerging Markets Bonds	USD	60.39	-0.23%	-0.45%	2.67%	2.95%	Cboe BZX
▲ Morgan Stanley Emerging Markets Domestic	USD	6.36	0.32%	1.11%	8.16%	-9.01%	New York

MILA: Policy Rate



Source: Bloomberg

Capital Market Laboratory Coordinator: Economist Bruno Bellido
Collaboration: Piero Best, Luis Davila, Laura Delgado and Alonso Hernández
email: pulsobursatil@ulima.edu.pe
facebook: www.facebook.com/pulsobursatil.ul

The content of this document is just for informational purposes. The information and opinions expressed should not be considered as recommendations for future decisions. Under any circumstances, the Capital Market Laboratory of University of Lima will be responsible for the use of the statements in this document.

PULSO BURSÁTIL

FACULTAD DE CIENCIAS EMPRESARIALES Y ECONÓMICAS
CARRERA DE ECONOMÍA
LABORATORIO DE MERCADO DE CAPITALES



WORLD

Main Indices	Close	1 D*	5 D*	1 M*	YTD*	Market Cap. (US\$ Mill.)
▲ Dow Jones (USA)	30,046.37	0.16%	-0.57%	1.92%	5.28%	9,287,280
▼ Standard & Poor's 500 (EEUU)	3,663.46	-0.13%	-0.96%	2.18%	13.39%	31,692,230
▼ NASDAQ Composite (USA)	12,377.87	-0.23%	-0.69%	4.64%	37.95%	19,948,572
▼ Stoxx EUROPE 600 (Europe)	390.12	-0.77%	-0.99%	1.28%	-6.19%	8,832,796
▼ DAX (Germany)	13,114.30	-1.38%	-1.39%	0.29%	-1.02%	987,021
▼ FTSE 100 (United Kingdom)	6,546.75	-0.80%	-0.05%	3.65%	-13.20%	1,419,513
▼ CAC 40 (France)	5,507.55	-0.76%	-1.81%	2.37%	-7.87%	1,460,595
▼ IBEX 35 (Spain)	8,063.10	-1.46%	-3.12%	3.59%	-15.56%	435,530
▲ MSCI AC Asia Pacific Index	194.87	0.33%	0.45%	5.33%	14.19%	24,753,820
▲ HANG SENG (Hong Kong)	26,505.87	0.36%	-1.23%	1.33%	-5.97%	4,055,377
▼ SHANGHAI SEC Comp. (China)	3,347.19	-0.77%	-2.83%	1.12%	9.74%	6,227,502
▼ NIKKEI 225 (Japan)	26,652.52	-0.39%	-0.37%	4.99%	12.66%	3,734,493
▼ S&P / ASX 200 (Australia)	6,642.58	-0.81%	0.13%	3.71%	-0.62%	1,580,184
▲ KOSPI (South Korea)	2,770.06	0.22%	-0.08%	11.07%	26.05%	1,676,942

*Legend: Variation 1D: 1 Day; 5D: 5 Days; 1M: 1 Month; YTD: Var.% 12/31/19 to date

Equity

Germany (Stocks from DAX Index)

Largest gains	Curr.	Price	▲%	Exchange	Largest losses	Curr.	Price	▼%	Exchange
VNA GY	EUR	57.3	0.74	Xetra	ALV GY	EUR	191.16	-3.02	Xetra
DWNI GY	EUR	42.71	0.47	Xetra	EOAN GY	EUR	8.858	-3.02	Xetra
BEI GY	EUR	91.36	0.24	Xetra	VOW3 GY	EUR	140.1	-2.98	Xetra
DPW GY	EUR	39.08	-0.03	Xetra	MUV2 GY	EUR	232.8	-2.72	Xetra

Europe (Stocks from STOXX EUROPE 600)

Largest gains	Curr.	Price	▲%	Exchange	Largest losses	Curr.	Price	▼%	Exchange
WLN FP	EUR	77.5	4.99	EN Paris	TEF SQ	EUR	3.548	-8.11	Soc.Bol SIBIE
ADE NO	NOK	194.7	4.74	Oslo	RR/L LN	Gbp	117	-7.87	Londres
ARGX BB	EUR	244	4.45	EN Brussels	NWG LN	Gbp	150.35	-6.87	Londres
ADYEN NA	EUR	1827	4.28	EN Amsterdam	KGH PW	PLN	179.35	-5.28	Warsaw

Global Overview:

United States:

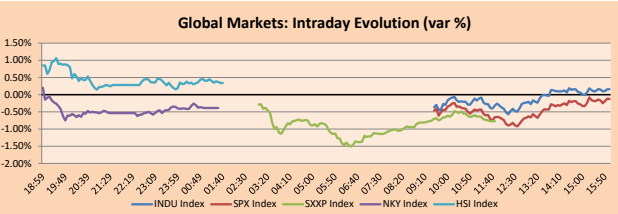
US markets closed today's session with mixed returns, given the uncertainty about a new economic stimulus and the strong profits of Walt Disney that helped the Dow Jones to close in positive territory. The US Senate approved a one-week extension of federal funding to avoid a government shutdown and allow more time for negotiations on fiscal stimulus and an overhead bill. Regarding macroeconomic information, recent data from a survey by the University of Michigan showed that consumer confidence improved more than expected in November; while an indicator of inflation increased moderately. On the other hand, Dow Jones got a boost from Walt Disney Co when the company announced a slew of new shows for its streaming services and said it expects up to 350 million global subscribers by the end of 2024. Lastly, the New York Times reported on a possible emergency use authorization for the COVID-19 vaccine from Pfizer Inc. that the US Food and Drug Administration would issue on Friday night. However, the pharmaceutical company shares gave up their initial gains and closed lower. Thus, the main indices S&P 500 -0.13%, DJIA +0.16%, NASDAQ -0.23% closed with mixed results.

Europe:

European markets closed today's session with negative returns as a five-week winning streak is snapped. The losses were generated from a severe economic forecast for 2021 from the European Central Bank that warns of a potential slowdown in the coming year despite the implementation of the projected stimulus packages. ECB President Christine Lagarde said the bank expects the eurozone's GDP to expand 3.9% next year, slower than its September forecast of 5%. Along the same lines, the ECB increased its Pandemic Emergency Purchase Program (PEPP) by €500 billion to €1.85 trillion and extended the scheme nine months to March 2022 late Thursday. It also expanded access to cheaper loans for banks until June 2022. In corporate actions, pharmaceutical Sanofi -4.00% recorded a drop in its share price after it said that its COVID-19 vaccine candidate developed with GlaxoSmithKline -1.00% showed an insufficient immune response in clinical trials. In this way, the main indexes Stoxx 600 -0.77%, FTSE 100 -0.80%, CAC 40 -0.76% and DAX -1.36% closed lower.

Asia:

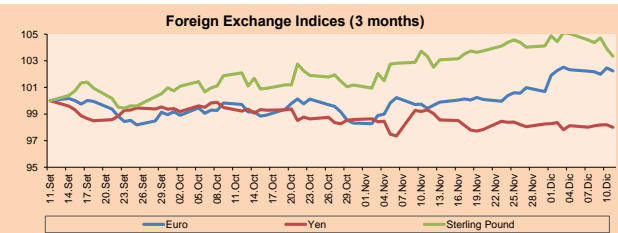
Asian markets ended today's session with mixed returns, as market participants monitored talks about a rescue package in the United States and economic data was announced. Slow progress on the next fiscal stimulus to support the US economy continues. Tapas Strickland of the National Bank of Australia indicated that markets are "having to balance a weak short-term outlook with a much more optimistic medium-term as vaccines begin to roll out," according to CNBC. In economic data, in South Korea, exports in the first 10 days of December rose 26.9% year-over-year due to an increase in sales of important products such as semiconductors. On the commodity side, China's benchmark iron ore futures rose nearly 10% to a new record of 1,000 yuan (US \$ 152.95) per ton, in a context of continuing unrest over supply and increased demand for steel in the country, according to Reuters. Thus, the Hang Seng + 0.36% and Kospi Composite + 0.86% closed higher; instead, the Shanghai Composite -0.77%, Shenzhen -1.28%, Nikkei -0.39% and S & P / ASX 200 -0.61% fell, among other indices.



Source: Bloomberg

Currency	Price	1 D*	5 D*	1 M*	YTD*
▼ Euro	1.2112	-0.21%	-0.07%	2.84%	8.02%
▼ Yen	104.0400	-0.19%	-0.12%	-1.32%	-4.21%
▼ Sterling Pound	1.3224	-0.53%	-1.61%	0.02%	-0.25%
▲ Yuan	6.5462	0.03%	0.23%	-1.28%	-5.99%
- Hong Kong Dollar	7.7513	0.00%	0.01%	-0.04%	-0.51%
▲ Brazilian Real	5.0594	0.80%	-1.37%	-6.30%	25.53%
▲ Argentine Peso	82.2187	0.10%	0.69%	3.43%	37.32%

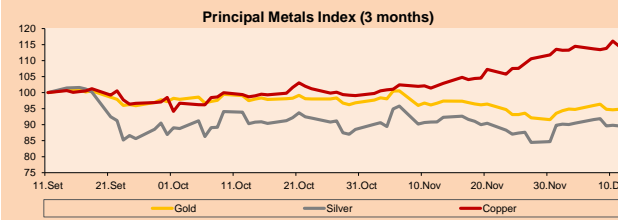
*Legend: Variation 1D: 1 Day; 5D: 5 Days; 1M: 1 Month; YTD: Var.% 12/31/19 to date



Base: 11/09/20=100
Source: Bloomberg

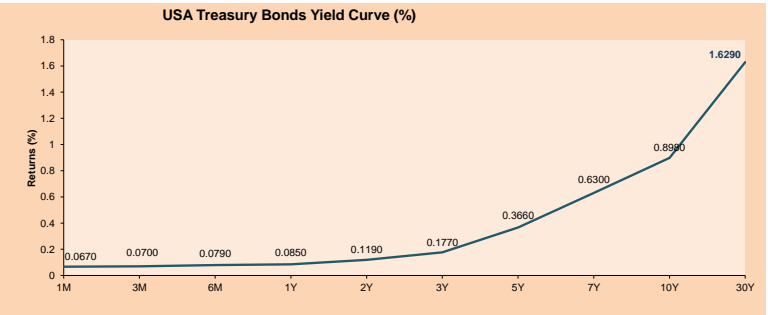
Commodities	Close	1 D*	5 D*	1 M*	YTD*
▲ Oro (US\$ Oz. T) (LME)	1,839.85	0.18%	0.05%	-1.35%	21.26%
▼ Plata (US\$ Oz. T) (LME)	23.95	-0.21%	-0.97%	-1.35%	34.16%
▼ Cobre (US\$ T) (LME)	7,754.05	-1.35%	0.05%	12.85%	26.12%
▼ Zinc (US\$ T) (LME)	2,760.85	-2.68%	1.09%	5.86%	21.12%
▼ Petróleo WTI (US\$ Barril) (NYM)	46.57	-0.45%	0.67%	11.57%	-16.88%
▼ Estano (US\$ T) (LME)	19,450.00	-0.22%	2.54%	6.85%	13.23%
▼ Plomo (US\$ T) (LME)	2,056.00	-1.17%	2.15%	10.81%	7.45%
▼ Acaúcar #11 (US\$ Libra) (NYB-ICE)	14.43	-1.57%	-0.07%	-0.41%	0.35%
▲ Cacao (US\$ T) (NYB-ICE)	2,622.00	2.14%	-1.21%	10.45%	7.81%
▲ Café Arabica (US\$ T) (NYB-ICE)	121.60	0.45%	3.45%	8.62%	-13.17%

*Lenda: Variación 1D: 1 Día; 5D: 5 Días; 1M: 1 Mes; YTD: Var.% 31/12/19 a la fecha



Base: 11/09/20=100
Source: Bloomberg

ETFs	Curr.	Close	1D	5D	30 D	YTD	Exchange
SPDR S&P 500 ETF TRUST	USD	366.30	-0.12%	-0.96%	2.70%	13.81%	NYSE Arca
ISHARES MSCI EMERGING MARKET	USD	50.72	-0.70%	-0.26%	5.62%	13.04%	NYSE Arca
ISHARES IBOXX HIGH YLD CORP	USD	86.68	-0.10%	-0.20%	1.11%	-1.43%	NYSE Arca
FINANCIAL SELECT SECTOR SPDR	USD	28.46	-1.01%	-1.79%	5.25%	-7.54%	NYSE Arca
VANECK GOLD MINERS	USD	35.08	-0.45%	-0.85%	-5.57%	19.81%	NYSE Arca
ISHARES RUSSELL 2000 ETF	USD	190.30	-0.49%	1.12%	10.24%	14.87%	NYSE Arca
SPDR GOLD SHARES	USD	172.49	0.19%	0.10%	-1.38%	20.71%	NYSE Arca
ISHARES 20+ YEAR TREASURY BO	USD	158.77	0.35%	2.30%	1.96%	17.19%	NASDAQ GM
INVESCO QQQ TRUST SERIES 1	USD	301.85	-0.22%	-1.20%	4.17%	41.97%	NASDAQ GM
ISHARES NASDAQ BIOTECHNOLOGY	USD	150.19	0.25%	1.62%	7.66%	24.63%	NASDAQ GM
ENERGY SELECT SECTOR SPDR	USD	41.12	-1.15%	1.21%	21.73%	-31.51%	NYSE Arca
PROSHARES ULTRA VIX ST FUTUR	USD	11.94	5.85%	7.98%	-8.58%	-7.37%	NYSE Arca
UNITED STATES OIL FUND LP	USD	31.94	-0.53%	1.20%	9.99%	-68.83%	NYSE Arca
ISHARES MSCI BRAZIL ETF	USD	37.14	-0.67%	2.74%	16.90%	-21.73%	NYSE Arca
SPDR S&P OIL & GAS EXP & PR	USD	62.48	-1.92%	2.43%	29.41%	-34.09%	NYSE Arca
UTILITIES SELECT SECTOR SPDR	USD	62.24	0.16%	-0.27%	-6.42%	-3.68%	NYSE Arca
ISHARES US REAL ESTATE ETF	USD	84.05	0.05%	-2.54%	-0.85%	-9.70%	NYSE Arca
SPDR S&P BIOTECH ETF	USD	142.27	-0.06%	4.46%	15.05%	49.59%	NYSE Arca
ISHARES IBOXX INVESTMENT GRA	USD	137.28	0.10%	0.20%	1.64%	7.28%	NYSE Arca
ISHARES JP MORGAN USD EMERGI	USD	114.92	0.05%	0.12%	1.15%	0.31%	NASDAQ GM
REAL ESTATE SELECT SECT SPDR	USD	36.27	0.06%	-2.84%	-2.11%	-6.21%	NYSE Arca
ISHARES CHINA LARGE-CAP ETF	USD	46.15	-0.90%	-2.20%	-3.05%	5.78%	NYSE Arca
CONSUMER STAPLES SPDR	USD	67.32	0.22%	-0.46%	0.79%	6.89%	NYSE Arca
VANECK JR GOLD MINERS	USD	51.07	-0.85%	-1.07%	-3.44%	20.85%	NYSE Arca
SPDR BBG BARC HIGH YIELD BND	USD	108.06	-0.08%	-0.20%	1.27%	-1.35%	NYSE Arca
VANGUARD REAL ESTATE ETF	USD	84.39	-0.09%	-2.35%	0.15%	-9.05%	NYSE Arca
GRAYSCALE BITCOIN TRUST BTC	USD	20.61	-4.01%	-11.24%	17.60%	151.65%	OTC US



Source: Bloomberg

Capital Market Laboratory Coordinator: Economist Bruno Bellido
Collaboration: Piero Best, Luis Davila, Laura Delgado and Alonso Hernandez
email: pulsobursatil@ulima.edu.pe
facebook: www.facebook.com/pulsobursatil.u

LIMA

Stocks

Ticker	Currency	Price	1D*	5D*	30D*	YTD*	Frequency	Volume (US\$)	Beta	Dividend Yield (%)	Price Earning	Market Cap. (M US\$)	Economic Sector*	Index Weight
▼ ALICORC1 PE**	S/.	7.20	-0.97%	1.68%	11.66%	3.77%	100.00%	348,290	0.72	3.47	16.56	1,712.73	Industrial	3.53%
▼ ATACOB1 PE**	S/.	0.13	-7.14%	-3.70%	4.84%	-21.21%	55.00%	20,211	1.05	0.00	-	34.19	Mining	1.02%
▼ BACKUS1 PE**	S/.	20.12	-0.15%	3.18%	3.18%	-29.40%	80.00%	63,830	0.50	3.25	9.10	8,390.19	Industrial	0.82%
▼ BAP PE**	US\$	160.50	-2.13%	-3.52%	34.70%	-24.53%	100.00%	1,309,780	1.62	5.48	-	15,148.36	Diverse	5.82%
▼ BVN PE**	US\$	12.50	-1.73%	4.17%	5.31%	-18.30%	95.00%	56,456	1.33	0.21	-	3,445.43	Mining	5.88%
▲ CASAGRC1 PE**	S/.	5.99	3.81%	-2.12%	36.45%	97.69%	95.00%	2,105	0.59	1.79	10.75	140.45	Agricultural	1.31%
▼ BBVAC1 PE**	S/.	2.28	-0.87%	-0.87%	1.33%	-26.26%	100.00%	145,374	0.78	3.79	11.87	4,143.77	Finance	2.85%
▼ CORARE1 PE**	S/.	0.93	-2.11%	3.33%	17.72%	2.20%	95.00%	6,552	0.58	5.09	6.61	371.87	Industrial	1.72%
▼ CPACASC1 PE**	S/.	5.71	-1.55%	-1.55%	3.25%	-7.15%	100.00%	43,215	0.55	4.03	18.42	679.13	Industrial	2.38%
▼ CVERDEC1 PE**	US\$	20.50	-4.21%	-3.67%	8.47%	6.22%	100.00%	311,934	0.67	0.00	33.32	7,176.15	Mining	5.25%
▲ ENGEPEC1 PE**	S/.	2.03	0.50%	1.00%	1.50%	-11.74%	50.00%	19,324	0.48	12.43	10.20	1,604.08	Public Services	1.44%
- ENDISPC1**	S/.	5.33	0.00%	1.33%	4.51%	-27.48%	70.00%	438	0.46	0.00	10.06	947.40	Public Services	0.98%
- FERREYC1 PE**	S/.	1.76	0.00%	0.57%	2.92%	-19.63%	100.00%	271,514	0.58	4.35	35.33	478.00	Diverse	4.90%
▼ ANZAC1 PE**	S/.	1.74	-2.25%	-0.57%	14.47%	2.35%	100.00%	629,645	0.76	0.00	-	422.31	Diverse	4.05%
▼ IFS PE**	US\$	30.31	-3.78%	0.36%	45.44%	-25.89%	95.00%	13,241	1.34	5.77	30.07	3,499.22	Diverse	7.22%
▼ INRETC1 PE**	US\$	35.70	-1.38%	-1.65%	8.02%	-0.83%	100.00%	2,862,708	0.57	1.58	28.72	3,670.22	Diverse	5.28%
▼ LUSURC1 PE**	S/.	26.00	-2.26%	-3.70%	-0.04%	0.97%	90.00%	231,474	0.50	2.50	25.52	3,524.21	Public Services	1.81%
- MINSUR1 PE**	S/.	1.85	0.00%	2.21%	10.78%	18.59%	75.00%	56,336	0.76	0.00	-	1,484.63	Mining	3.09%
- PML PE**	US\$	0.10	0.00%	7.53%	11.11%	78.57%	65.00%	5,300	1.24	0.00	-	26.42	Mining	2.12%
▼ RELAPAC1 PE**	S/.	0.06	-3.03%	4.92%	-1.54%	-47.97%	95.00%	5,897	0.51	0.00	-	148.21	Industrial	2.12%
▲ SCCO PE**	US\$	59.50	0.75%	-2.70%	10.70%	40.23%	85.00%	63,990	0.78	2.52	34.66	45,997.86	Mining	2.14%
▼ SIDERC1 PE**	S/.	0.89	0.00%	7.23%	17.11%	0.00%	90.00%	4,482	0.86	38.45	10.58	304.20	Industrial	1.43%
▲ TV PE**	US\$	0.17	5.73%	7.79%	38.33%	-4.05%	85.00%	4,150	1.49	0.00	-	164.19	Mining	2.93%
- UNACMC1 PE**	S/.	1.56	0.00%	1.96%	15.56%	-22.00%	95.00%	7,772	0.76	1.67	75.91	789.50	Industrial	3.00%
▼ VOLCABC1 PE**	S/.	0.44	-1.56%	5.48%	16.58%	-0.45%	100.00%	509,086	0.80	0.00	-	1,801.69	Mining	5.90%
- NEXAPEC1 PE**	S/.	2.80	0.00%	0.00%	8.95%	-18.84%	55.00%	6,585	0.99	0.00	-	1,030.44	Mining	1.56%

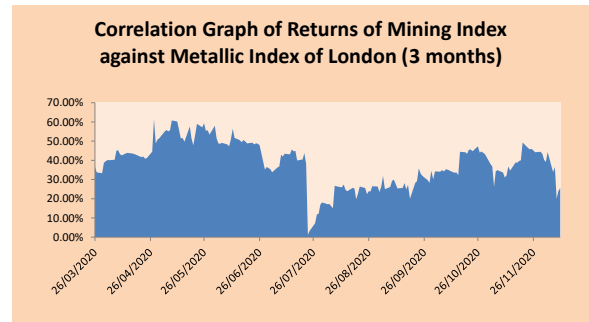
Quantity of shares: 26
Source: Bloomberg, Económática
* Bloomberg Industry Classification System
** PER is used in the stock market and original currency of the instrument
*Legend: Variation 1D: 1 Day; 5D: 5 Days; 1M: 1 Month; YTD: Var.% 12/31/19 to date

Sectorial Indices

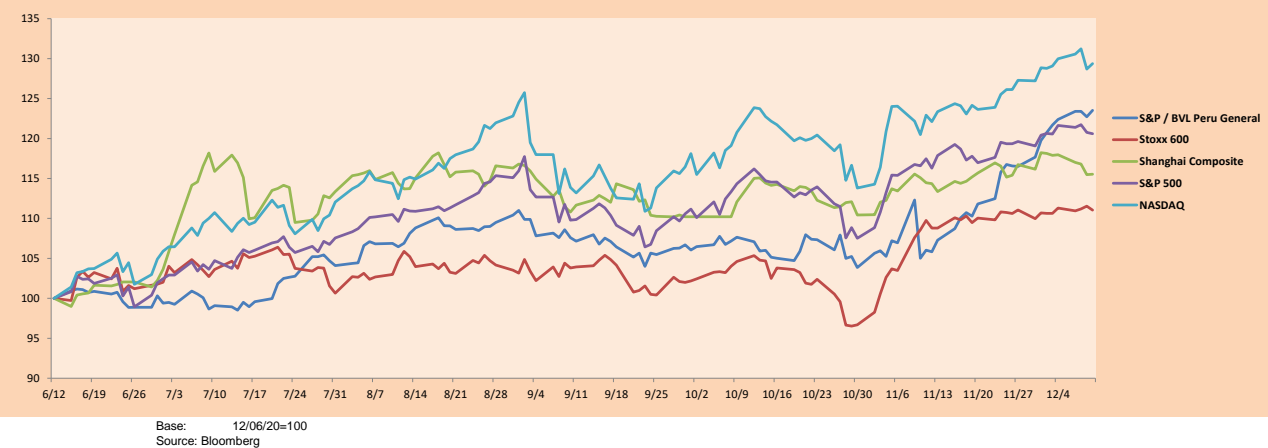
	Close	1D*	5D*	30D*	YTD*	Beta
▼ S&P/BVLMining	367.62	-0.47%	-0.11%	8.32%	20.67%	0.94
▼ S&P/BVLConsumer	1,047.64	-1.15%	0.28%	5.21%	-8.12%	0.36
▼ S&P/BVLIndustrials	193.86	-0.72%	0.84%	11.43%	-8.18%	0.49
▼ S&P/BVLFinancials	1,024.69	-2.36%	-3.04%	32.66%	-13.13%	1.67
▼ S&P/BVLConstruction	213.40	-0.97%	0.90%	13.07%	-5.84%	0.50
▼ S&P/BVLPublicSvcs	616.31	-0.82%	-0.74%	1.25%	-5.40%	0.07
▼ S&P/BVLElectricUtil	601.67	-0.82%	-0.74%	1.25%	-5.40%	0.07

S&P/BVLConstructionTRPEN

*Legend: Variation 1D: 1 Day; 5D: 5 Days; 1M: 1 Month; YTD: Var.% 12/31/19 to date



Indices (6 months)



Base: 12/06/20=100
Source: Bloomberg

Capital Market Laboratory Coordinator: Economist Bruno Bellido
Collaboration: Piero Best, Luis Davila, Laura Delgado and Alonso Hernández
email: pulsohorsatil@ulima.edu.pe
facebook: www.facebook.com/pulsohorsatil.ul

SOVEREIGN RATING

RISK RATINGS

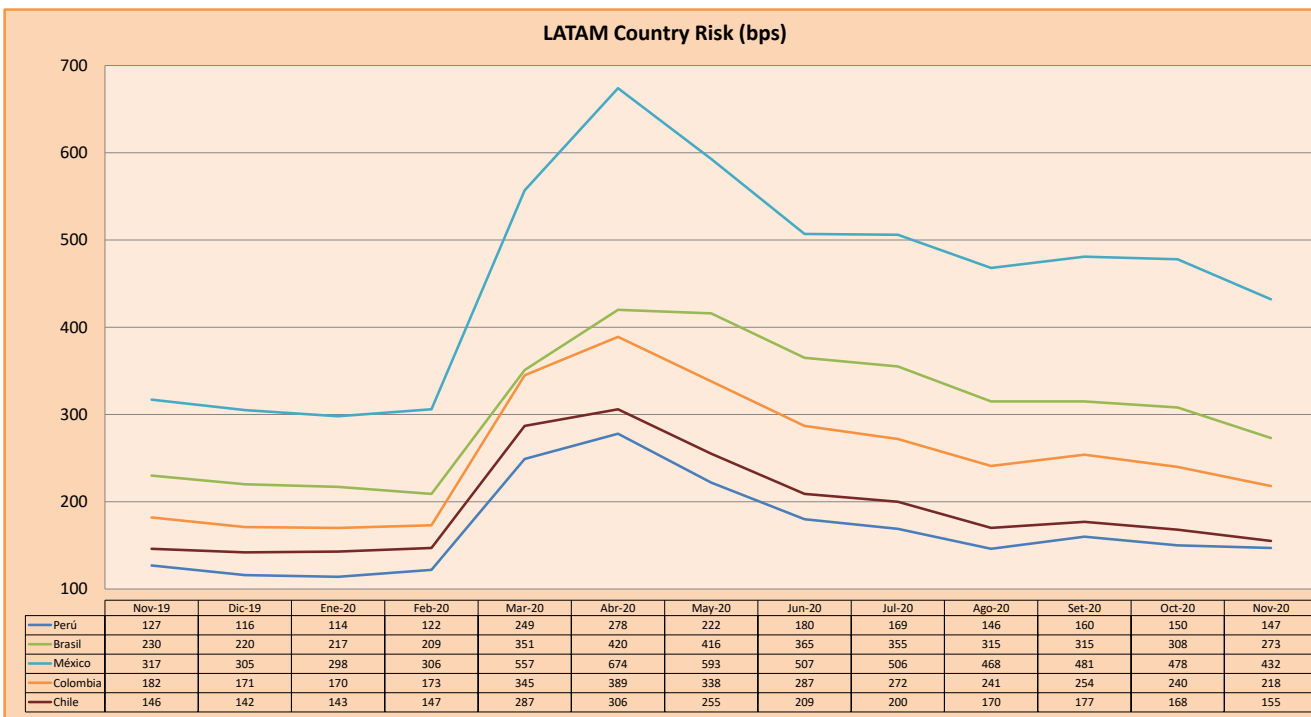
Moody's	S&P	Fitch	
Aaa	AAA	AAA	Prime
Aa1	AA+	AA+	High credit quality
Aa2	AA	AA	
Aa3	AA-	AA-	
A1	A+	A+	Medium-high grade, with low credit risk
A2	A	A	
A3	A-	A-	
Baa1	BBB+	BBB+	Moderate Credit Risk
Baa2	BBB	BBB	
Baa3	BBB-	BBB-	
Ba1	BB+	BB+	It has speculative elements and it is subject to substantial credit risk
Ba2	BB	BB	
Ba3	BB-	BB-	
B1	B+	B+	It is considered speculative and it has high credit risk
B2	B	B	
B3	B-	B-	
Caa1	CCC+		Bad credit conditions and it is subject to high credit risk
Caa2	CCC		
Caa3	CCC-	CCC	
Ca	C		Very close to default or in default
		DDD	
C	D	DD D	

Source: Bloomberg

Latin America Credit Rating			
Clasificadora de riesgo			
Country	Moody's	Fitch	S&P
Peru	A3	BBB+	BBB+
México	Ba2	BB-	BB-
Venezuela	C	WD	SD
Brazil	Ba2	BB-	BB-
Colombia	Baa2	BBB-	BBB-
Chile	A1	A-	A+
Argentina	Ca	WD	CCC+
Panama	Baa1	BBB	BBB

Source: Bloomberg

LATAM Country Risk (bps)



Source: BCRP

Capital Market Laboratory Coordinator: Economist Bruno Bellido
Collaboration: Piero Best, Luis Davila, Laura Delgado and Alonso Hernández
email: pulsobursatil@ulima.edu.pe
facebook: www.facebook.com/pulsobursatil.ul