

PULSO BURSÁTIL

FACULTAD DE CIENCIAS EMPRESARIALES Y ECONÓMICAS
CARRERA DE ECONOMÍA
LABORATORIO DE MERCADO DE CAPITALES

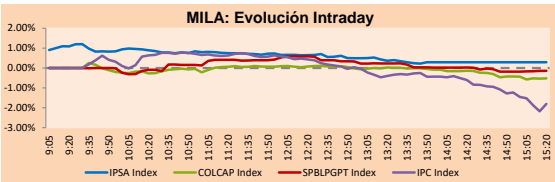


MILA

Lima, december 18, 2020

Main Indexes	Close	1 D	5 D	1 M	YTD	Cap. Burs. (US\$ bill)
▲ IPSA (Chile)	4,210.69	0.27%	3.05%	3.85%	-9.83%	113.71
▲ IGPA (Chile)	21,059.56	0.31%	2.86%	3.93%	-9.98%	140.03
▼ COLSC (Colombia)	1,036.90	-0.98%	2.17%	10.81%	6.02%	5.99
▼ COLCAP (Colombia)	1,426.47	-1.19%	3.54%	15.06%	-14.19%	87.14
▼ S&P/BVL (Perú)*	20,729.79	-0.39%	1.25%	10.20%	0.99%	104.20
▼ S&P/BVL SEL (Perú)	540.68	-0.42%	1.24%	8.08%	1.74%	85.58
▼ S&P/BVL LIMA 25	25,033.90	-0.22%	0.35%	6.36%	-2.79%	103.31
▼ IPC (México)	43,873.81	-1.02%	0.60%	4.70%	0.76%	280.42
▼ S&P MILA 40	530.10	-0.56%	3.89%	13.48%	-12.10%	5,593.77

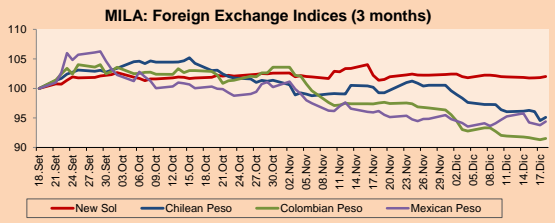
*Legend: Variation 1D: 1 day; 5D: 5 days; 1M: 1 Month; YTD: Var% 12/31/19 to date



Source: Bloomberg

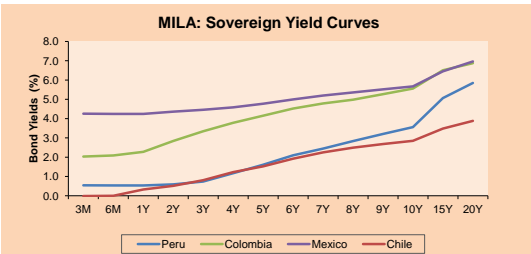
Currency	Price	1D*	5D*	30 D*	YTD*
▲ New Sol (PEN)	3,595.55	0.19%	0.08%	0.63%	8.55%
▲ Chilean Peso (CLP)	725.88	0.58%	-1.00%	-4.20%	-3.44%
▲ Colombian Peso (COP)	3,419.94	0.22%	-0.45%	-6.17%	4.36%
▲ Mexican Peso (MXN)	19.95	0.66%	-0.91%	-1.84%	5.40%

*Legend: Variation 1D: 1 day; 5D: 5 days; 1M: 1 Month; YTD: Var% 12/31/19 to date



Base: 18/09/20=100
Source: Bloomberg

Fixed Income	Currency	Price	Bid Yield (%)	Ask Yield (%)	Duration
PERU 7.35 07/21/25	USD	128.177	1.11	0.97	3.95
PERU 4.125 08/25/27	USD	117.475	1.43	1.33	5.91
PERU 8.75 11/21/33	USD	170.418	2.42	2.34	9.15
PERU 6.55 03/14/37	USD	151.481	2.67	2.60	10.84
PERU 5.625 11/18/2050	USD	156.287	2.85	2.80	17.81
CHILE 2.25 10/30/22	USD	103.742	0.37	0.09	1.82
CHILE 3.125 01/21/26	USD	111.058	0.96	0.83	4.70
CHILE 3.625 10/30/42	USD	117.171	2.62	2.56	15.98
COLOM 11.85 03/09/28	USD	165.605	2.07	1.99	5.43
COLOM 10.375 01/28/33	USD	161.2	4.09	3.83	7.96
COLOM 7.375 09/18/37	USD	145.831	3.72	3.65	10.92
COLOM 6.125 01/18/41	USD	133.687	3.76	3.70	12.73
MEX 4 10/02/23	USD	133.687	3.757	3.696	12.73
MEX5.55 01/45	USD	130.391	3.66	3.62	14.65



Source: Bloomberg

Equity

Largest gains	Exchange	Currency	Price	▲ %
ENEL CHILE SA	Chile	CLP	57.00	3.66
ENGIE ENERGIA CH	Chile	CLP	889.90	3.48
ENEL AMERICAS SA	Chile	CLP	120.00	3.45
KIMBERLY-CLA M-A	Mexico	MXN	32.81	2.85
CMPC	Chile	CLP	1876.60	2.48

Per Turnover	Exchange	Amount (US\$)
AMERICA MOVIL-L	Mexico	128,034,551
WALMART DE MEXIC	Mexico	127,154,445
GRUPO F BANORT-O	Mexico	106,611,973
FOMENTO ECON-UBD	Mexico	89,255,249
GRUPO MEXICO-B	Mexico	72,851,972

Largest losses	Exchange	Currency	Price	▼ %
SURAMERICANA	Colombia	COP	24690	-5.98
GRUPO F BANORT-O	Mexico	MXN	108.38	-5.71
FIBRA UNO	Mexico	MXN	21.79	-4.43
CEMEX SAB-CPO	Mexico	MXN	10.3	-3.92
CORFICOLOMBIANA	Colombia	COP	31620	-3.60

Per Volume	Exchange	Volume
ITAU CORPBANCA	Chile	341,786,222
BANCO DE CHILE	Chile	278,904,019
BANCO SANTANDER	Chile	274,412,705
ENEL AMERICAS SA	Chile	264,140,115
AMERICA MOVIL-L	Mexico	180,198,590

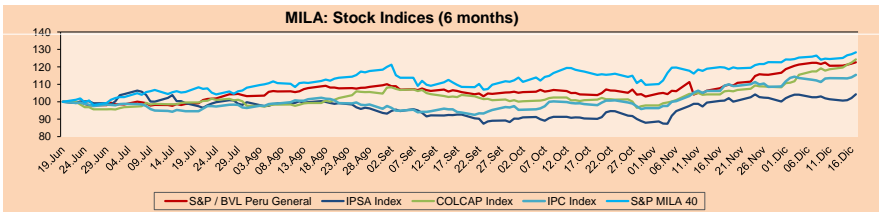
MILA

Peru: The General Index of the Lima Stock Exchange ended today's session with a negative result of -0.39%. The index maintains an annual accumulated positive trend of + 1.74% in local currency, while the adjusted return in dollars amounts to -6.96%. Then, the S&P / BVL Peru SEL varied by -0.42% while the S&P / BVL LIMA 25 by -0.22%. The PEN spot reached 5 / 3.5955. Headline: Mining sector in Peru is closer to preCovid-19 stage.

Chile: The IPSA index ended the day with a positive return of +0.27%. The sectors that benefited the most during the session were Industrials (+ 2.86%) and Utilities (+ 2.48%). The stocks with the best performance were Enel Chile SA (+ 3.66%) and ENGIE Energia Chile SA (+ 3.48%). Headline: Siemens Gamesa will maintain Servion's largest wind projects in Latin America for 10 years.

Colombia: The COLCAP index had a negative result of -1.19%. The sectors with the worst returns on the day were Energy (-1.82%) and Non-Cyclical Consumption (-1.45%). The worst performing stocks were Grupo de Inversiones Suramericana SA (-5.98%) and Corporación Financiera Colombiana SA (-3.60%). Headline: Colombia's GDP contracted 4.5% in October.

Mexico: The MEXBOL index closed the session with a negative result of -1.02%. The most affected sectors of the day were Finance (-2.75%) and Utilities (-1.81%). The worst performing stocks were Centera SAB de CV (-9.90%) and Grupo Financiero Banorte SAB de CV (-5.77%). Headline: Gasolinás Magna, Premium and diesel will 'fire' 2020 without fiscal stimulus.

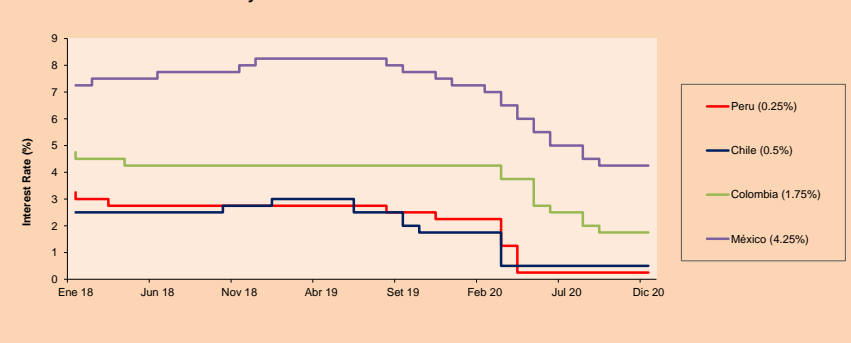


Base: 22/06/20=100
Source: Bloomberg

ETFs

ETFs	Curr.	Close	1D	5D	30 D	YTD	Exchange
▼ iShares MSCI All Peru Caped Index Fund	USD	34.82	-0.07%	2.99%	9.63%	-6.02%	NYSE Arca
▼ iShares MSCI All Chile Caped Index Fund	USD	29.72	-0.44%	3.70%	7.53%	-10.83%	Cboe BZX
▲ Global X MSCI Colombia	USD	11.37	0.18%	4.84%	20.83%	-18.20%	NYSE Arca
▼ iShares MSCI Mexico Capped	USD	42.59	-2.07%	0.69%	4.29%	-5.42%	NYSE Arca
▼ iShares MSCI Emerging Markets	USD	50.99	-0.12%	0.53%	4.68%	13.64%	NYSE Arca
▼ Vanguard FTSE Emerging Markets	USD	50.03	-0.30%	1.63%	5.44%	12.50%	NYSE Arca
▼ iShares Core MSCI Emerging Markets	USD	61.14	-0.33%	0.21%	4.71%	13.73%	NYSE Arca
▼ iShares JP Morgan Emerging Markets Bonds	USD	60.24	-0.03%	-0.25%	1.48%	2.69%	Cboe BZX
▼ Morgan Stanley Emerging Markets Domestic	USD	6.34	-0.31%	-0.31%	4.62%	-9.30%	New York

MILA: Policy Rate



Source: Bloomberg

Capital Market Laboratory Coordinator: Economist Bruno Bellido
Collaboration: Piero Best, Luis Davila, Laura Delgado and Alonso Hernández
email: pulsobursatil@ulima.edu.pe
facebook: www.facebook.com/pulsobursatil.ul

The content of this document is just for informational purposes. The information and opinions expressed should not be considered as recommendations for future decisions. Under any circumstances, the Capital Market Laboratory of University of Lima will be responsible for the use of the statements in this document.

PULSO BURSÁTIL

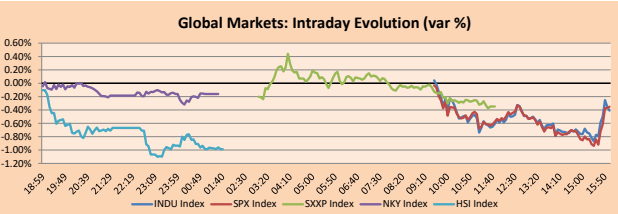
FACULTAD DE CIENCIAS EMPRESARIALES Y ECONÓMICAS
CARRERA DE ECONOMÍA
LABORATORIO DE MERCADO DE CAPITALES



WORLD

Main Indices	Close	1 D*	5 D*	1 M*	YTD*	Market Cap. (US\$ Mill.)
▼ Dow Jones (USA)	30,179.05	-0.41%	0.44%	3.13%	5.75%	9,400,581
▼ Standard & Poor's 500 (EEUU)	3,709.41	-0.35%	1.25%	4.27%	14.81%	32,104,925
▼ NASDAQ Composite (USA)	12,755.64	-0.07%	3.05%	7.60%	42.16%	20,577,970
▼ Stoxx EUROPE 600 (Europe)	395.90	-0.35%	1.48%	1.61%	-4.80%	8,856,041
▼ DAX (Germany)	13,630.51	-0.27%	3.94%	3.75%	2.88%	1,013,687
▼ FTSE 100 (United Kingdom)	6,529.18	-0.33%	-0.27%	2.80%	-13.43%	1,386,483
▼ CAC 40 (France)	5,527.84	-0.39%	0.37%	0.58%	-7.53%	1,450,166
▼ IBEX 35 (Spain)	8,037.40	-1.42%	-0.32%	0.75%	-15.83%	430,214
▼ MSCI AC Asia Pacific Index	196.52	-0.44%	0.85%	4.04%	15.16%	24,970,784
▼ HANG SENG (Hong Kong)	26,498.60	-0.67%	-0.03%	0.18%	-6.00%	4,035,523
▼ SHANGHAI SEC Comp. (China)	3,394.90	-0.29%	1.43%	0.51%	11.30%	6,327,136
▼ NIKKEI 225 (Japan)	26,763.39	-0.16%	0.42%	4.84%	13.13%	3,787,153
▼ S&P / ASX 200 (Australia)	6,675.47	-1.20%	0.50%	2.08%	-0.13%	1,609,667
▼ KOSPI (South Korea)	2,772.18	-1.02%	0.60%	8.56%	26.14%	1,663,876

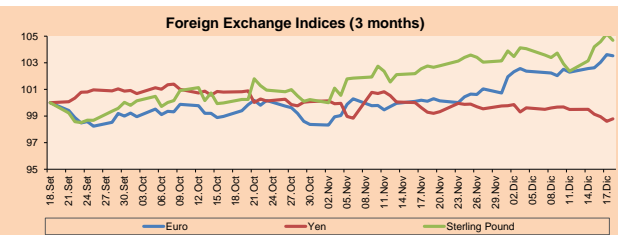
*Legend: Variation 1D: 1 Day; 5D: 5 Days; 1M: 1 Month; YTD: Var.% 12/31/19 to date



Source: Bloomberg

Currency	Price	1 D*	5 D*	1 M*	YTD*
▼ Euro	1.2257	-0.09%	1.20%	3.41%	9.31%
▼ Yen	103.3000	0.18%	-0.71%	-0.50%	-4.89%
▼ Sterling Pound	1.3523	-0.46%	2.26%	1.88%	2.01%
▼ Yuan	6.5400	0.09%	-0.09%	-0.31%	-6.08%
▼ Hong Kong Dollar	7.7522	0.00%	0.01%	-0.01%	-0.50%
▼ Brazilian Real	5.0849	0.36%	0.50%	-5.19%	26.16%
▲ Argentine Peso	82.8376	0.15%	0.75%	3.34%	38.36%

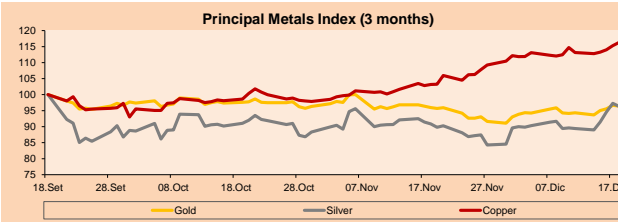
*Legend: Variation 1D: 1 Day; 5D: 5 Days; 1M: 1 Month; YTD: Var.% 12/31/19 to date



Base: 18/09/20=100
Source: Bloomberg

Commodities	Close	1 D*	5 D*	1 M*	YTD*
▼ Oro (US\$ Oz. T) (LME)	1,881.35	-0.22%	2.26%	0.49%	24.00%
▼ Plata (US\$ Oz. T) (LME)	25.81	-0.98%	7.77%	6.08%	44.58%
▲ Cobalt (US\$ TM) (LME)	7,968.75	0.87%	2.76%	12.72%	29.59%
▲ Zinc (US\$ TM) (LME)	2,851.75	0.60%	3.29%	4.00%	25.10%
▲ Petróleo WTI (US\$ Barril) (NYM)	49.10	1.53%	5.43%	16.88%	-12.37%
▲ Estano (US\$ TM) (LME)	20,149.50	0.50%	3.60%	6.86%	17.30%
▲ Plomo (US\$ TM) (LME)	2,031.25	-0.53%	-1.20%	5.16%	6.15%
▼ Acaúcar #11 (US\$ Libra) (NYB-ICE)	14.44	-1.63%	0.07%	-6.54%	0.42%
▼ Cacao (US\$ TM) (NYB-ICE)	2,506.00	-1.38%	-4.42%	-2.87%	3.04%
▼ Café Arabica (US\$ TM) (NYB-ICE)	125.25	-1.07%	3.00%	1.95%	-10.57%

*Legend: Variación 1D: 1 Día; 5D: 5 Días; 1M: 1 Mes; YTD: Var.% 31/12/19 a la fecha



Base: 18/09/20=100
Source: Bloomberg

Equity

Germany (Stocks from DAX Index)

Largest gains	Curr.	Price	▲%	Exchange	Largest losses	Curr.	Price	▼%	Exchange
SIE GY	EUR	117.82	1.05	Xetra	ADS GY	EUR	289.9	-1.73	Xetra
HEN3 GY	EUR	91.16	1.02	Xetra	MRK GY	EUR	136.9	-1.58	Xetra
FME GY	EUR	69.54	0.67	Xetra	DWNI GY	EUR	42.9	-1.56	Xetra
BMW GY	EUR	74.19	0.56	Xetra	RWE GY	EUR	33.51	-0.98	Xetra

Europe (Stocks from STOXX EUROPE 600)

Largest gains	Curr.	Price	▲%	Exchange	Largest losses	Curr.	Price	▼%	Exchange
HFG GY	EUR	62	5.89	Xetra	LAND LN	GBP	667	-6.02	Londres
UTDI GY	EUR	35.72	4.60	Xetra	ICAD FP	EUR	61.4	-5.97	EN Paris
HIK LN	GBP	2580	4.58	Londres	LI FP	EUR	17.835	-5.36	EN Paris
PNDORA DC	DKK	653	4.08	Copenhagen	RMW LN	GBP	324.9	-5.88	Londres

Global Overview:

United States:

The US markets ended trading negatively as a lack of progress in talks on the next stimulus package deal created uncertainty for investors. This came after the United States Congress risked moving to midnight Friday as the final date to keep governance open and address the coronavirus crisis, as a partisan fight over federal lending rules caused a new delay on a \$900 billion COVID-19 relief bill. Along the same lines, the prospect of continued monetary and fiscal stimulus has helped stocks look beyond the economic impact of the pandemic and set them up for strong yearly gains. On the other hand, during the day the shares had volatile behaviour promoted by the electric car manufacturer Tesla Inc +5.96%, which would become the most valuable company that has been added to the main Wall Street benchmark on Monday. Tesla's stock turnover had to surpass \$120 billion shortly after 4 pm. In this way, the main indexes S&P 500 -0.35%, DJIA -0.41% and NASDAQ -0.07% closed lower.

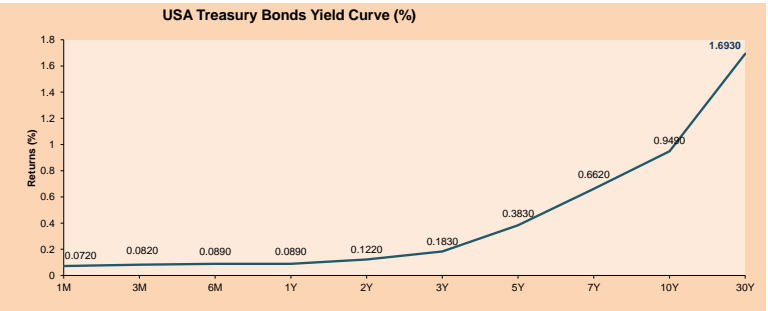
Europe:

European markets closed today's session with negative returns due to greater uncertainty regarding the closing of a post-Brexit trade deal. Market sentiment followed Britain's Heavy Exporters Index, which lost 0.3% even as the pound depreciated after Britain and the European Union said they would remain widely separated on a number of issues and that it will be more likely that a trade agreement could not be reached before the December 31 deadline. Still, optimism around vaccine launches in Britain and possible launches in other parts of Europe before the end of the year, as well as progress in US stimulus talks that support hopes for an economic recovery loss in the session decreased. On corporate issues, Finnish paper producer Tikkurila +60% posted a rise after US company PPG Industries made an offer to buy the company for a total of 1.1 billion euros (\$1.35 billion). In this way, the main indexes Stoxx 600 -0.35%, FTSE 100 -0.33%, CAC 40 -0.39% and DAX -0.27% closed lower.

Asia:

Asian markets ended the day mostly lower, as market participants monitored the Bank of Japan's monetary policy decision. Investor sentiment deteriorated after the Bank of Japan reported a six-month extension of its special program aimed at easing financial pressures on companies in the context of the pandemic. Likewise, the return target of the country's public debt maturing in 10 years was set at around 0%, while the short-term interest target was set at -0.1%, according to CNBC. The country's Central Bank also added that it will "carry out an evaluation for greater effective and sustainable monetary relaxation" and thus meet the inflation target, with the results possibly being published in March. Another factor that could impact the market is the increasing cases of COVID-19 in some parts of North Asia. Yesterday, in South Korea, the level of daily infected surpassed the figure of 1000 for the second day in a row. Thus, the Shanghai Composite -0.29%, Shenzhen -0.26%, Hang Seng -0.67%, Nikkei -0.16%, Singapore STI -0.32% and S & P / ASX 200 -1.2% finished with negative returns, among other indices.

ETFs	Curr.	Close	1D	5D	30 D	YTD	Exchange
SPDR S&P 500 ETF TRUST	USD	369.18	-0.82%	0.79%	3.62%	14.70%	NYSE Arca
ISHARES MSCI EMERGING MARKET	USD	50.99	-0.12%	0.53%	4.68%	13.64%	NYSE Arca
ISHARES IBOXX HIGH YLD CORP	USD	86.68	0.08%	0.00%	1.04%	-1.43%	NYSE Arca
FINANCIAL SELECT SECTOR SPDR	USD	28.49	-0.87%	0.11%	4.24%	-7.44%	NYSE Arca
VANECK GOLD MINERS	USD	36.58	-1.90%	4.28%	2.12%	24.83%	NYSE Arca
ISHARES RUSSELL 2000 ETF	USD	195.34	-0.48%	2.65%	11.01%	17.91%	NYSE Arca
SPDR GOLD SHARES	USD	176.44	-0.17%	2.29%	0.54%	23.47%	NYSE Arca
ISHARES 20+ YEAR TREASURY BO	USD	156.33	-0.30%	-1.54%	-1.85%	15.39%	NASDAQ GM
INVECO QQQ TRUST SERIES 1	USD	310.06	-0.30%	2.72%	6.88%	45.84%	NASDAQ GM
ISHARES NASDAQ BIOTECHNOLOGY	USD	155.75	0.43%	3.70%	12.93%	29.24%	NASDAQ GM
ENERGY SELECT SECTOR SPDR	USD	39.40	-1.87%	-4.18%	11.24%	-34.36%	NYSE Arca
PROSHARES ULTRA VIX ST FUTUR	USD	11.02	3.18%	-0.07%	-7.71%	-14.44%	Cboe BZX
UNITED STATES OIL FUND LP	USD	33.48	0.97%	15.45%	-67.33%	NYSE Arca	
ISHARES MSCI BRAZIL ETF	USD	37.70	-0.50%	1.51%	16.47%	-20.55%	NYSE Arca
SPDR S&P OIL & GAS EXP & PR	USD	59.62	-1.31%	-4.58%	16.15%	-37.11%	NYSE Arca
UTILITIES SELECT SECTOR SPDR	USD	62.29	-0.86%	0.08%	-2.93%	-3.61%	NYSE Arca
ISHARES US REAL ESTATE ETF	USD	84.08	-1.80%	0.04%	-1.26%	-9.67%	NYSE Arca
SPDR S&P BIOTECH ETF	USD	147.55	0.61%	3.71%	16.67%	55.14%	NYSE Arca
ISHARES IBOXX INVESTMENT GRA	USD	137.16	-0.07%	-0.09%	0.17%	7.19%	NYSE Arca
ISHARES JP MORGAN USD EMERGI	USD	115.22	-0.13%	0.28%	1.27%	0.58%	NASDAQ GM
REAL ESTATE SELECT SECT SPDR	USD	36.44	-1.73%	0.47%	-1.86%	-5.77%	NYSE Arca
ISHARES CHINA LARGE-CAP ETF	USD	45.75	-0.17%	-0.97%	-2.97%	4.86%	NYSE Arca
CONSUMER STAPLES SPDR	USD	67.93	0.22%	0.91%	1.78%	7.86%	NYSE Arca
VANECK JR GOLD MINERS	USD	54.42	-2.19%	6.56%	5.40%	28.77%	NYSE Arca
SPDR BBG BARC HIGH YIELD BND	USD	108.10	-0.32%	0.04%	1.13%	-1.31%	NYSE Arca
VANGUARD REAL ESTATE ETF	USD	84.93	-2.01%	0.64%	0.22%	-8.47%	NYSE Arca
GRAYSCALE BITCOIN TRUST BTC	USD	29.48	4.35%	43.04%	50.10%	259.95%	OTC US



Source: Bloomberg

Capital Market Laboratory Coordinator: Economist Bruno Bellido
Collaboration: Piero Best, Luis Davila, Laura Delgado and Alonso Hernandez
email: pulsobursatil@ulima.edu.pe
facebook: www.facebook.com/pulsobursatil.ulima

LIMA

Stocks

Ticker	Currency	Price	1D*	5D*	30D*	YTD*	Frequency	Volume (US\$)	Beta	Dividend Yield (%)	Price Earning	Market Cap. (M US\$)	Economic Sector*	Index Weight
▼ ALICORC1 PE**	S/.	7.20	-0.98%	2.17%	10.81%	6.02%	100.00%	1,485,096	0.72	3.47	16.56	1,711.30	Industrial	3.53%
ATACOCB1 PE**	S/.	0.13	0.00%	0.00%	4.84%	-21.21%	50.00%	44,210	1.05	0.00	-	34.16	Mining	1.02%
- BACKJUS1 PE**	S/.	20.00	0.00%	-0.60%	2.04%	-29.82%	80.00%	22,096	0.50	3.27	9.05	7,622.09	Industrial	0.82%
▼ BAP PE**	US\$	161.37	-0.39%	0.54%	19.09%	-24.13%	100.00%	2,119,875	1.61	5.45	-	15,230.47	Diverse	5.82%
▼ BVN PE**	US\$	12.81	-0.70%	2.48%	11.39%	-16.27%	95.00%	1,209,040	1.32	0.20	-	3,530.88	Mining	5.88%
- CASAGRC1 PE**	S/.	5.50	0.00%	-8.18%	5.77%	81.52%	80.00%	15,005	0.59	0.00	9.87	128.85	Agricultural	1.31%
▼ BBVAC1 PE**	S/.	2.20	-1.35%	-3.51%	2.80%	-28.85%	100.00%	73,848	0.78	3.92	11.45	3,995.04	Finance	2.85%
▲ CORARE1 PE**	S/.	0.93	2.20%	0.00%	3.33%	2.20%	90.00%	3,578	0.56	7.51	6.61	374.18	Industrial	1.72%
▼ CPACASC1 PE**	S/.	5.47	-0.55%	-4.20%	-8.83%	-11.06%	95.00%	25,118	0.55	4.20	17.65	650.27	Industrial	2.38%
▼ CVERDEC1 PE**	US\$	21.40	-0.47%	4.39%	15.05%	10.88%	100.00%	71,921	0.67	0.00	34.79	7,491.20	Mining	5.25%
- ENGEPEC1 PE**	S/.	2.01	0.00%	-0.99%	2.55%	-12.61%	50.00%	29,429	0.48	0.00	10.10	1,586.95	Public Services	1.44%
- ENDISPC1**	S/.	5.35	0.00%	0.38%	5.94%	-27.21%	65.00%	6,495	0.46	0.00	10.10	950.16	Public Services	0.98%
▲ FERREYC1 PE**	S/.	1.78	0.56%	1.14%	1.71%	-18.72%	100.00%	35,405	0.58	4.31	24.02	483.02	Diverse	4.90%
▼ AENZAC1 PE**	S/.	1.70	-2.86%	-2.30%	7.59%	0.00%	100.00%	100,108	0.77	0.00	-	412.25	Diverse	4.05%
▼ IFS PE**	US\$	30.13	-3.43%	-0.59%	17.70%	-26.33%	90.00%	79,703	1.35	5.81	29.93	3,478.44	Diverse	7.22%
- INRETC1 PE**	US\$	35.50	-0.28%	-0.56%	4.41%	-1.39%	100.00%	961,010	0.58	1.59	28.60	3,649.66	Diverse	5.28%
▼ LUSURC1 PE**	S/.	26.50	0.00%	1.92%	1.92%	2.91%	90.00%	8,107	0.51	3.77	26.01	3,588.99	Public Services	1.81%
- MINSUR1 PE**	S/.	1.81	0.00%	-2.16%	8.38%	16.03%	80.00%	1,312	0.75	0.00	-	1,451.32	Mining	3.09%
- PML PE**	US\$	0.10	0.00%	-5.00%	5.56%	69.64%	65.00%	11,325	1.24	0.00	-	25.10	Mining	2.12%
▲ RELAPAC1 PE**	S/.	0.07	3.03%	6.25%	-1.45%	-44.72%	95.00%	48,117	0.52	0.00	-	157.34	Industrial	2.12%
▲ SCCO PE**	US\$	63.15	0.32%	6.13%	12.65%	48.83%	90.00%	189,546	0.79	2.38	36.79	48,819.58	Mining	2.14%
▲ SIDERC1 PE**	S/.	0.85	2.41%	-4.49%	6.25%	-4.49%	90.00%	40,162	0.85	40.26	10.10	290.29	Industrial	1.43%
- TV PE**	US\$	0.16	0.00%	-3.61%	3.23%	-7.51%	85.00%	11,042	1.47	0.00	-	158.25	Mining	2.93%
▼ UNACEMC1 PE**	S/.	1.49	-3.87%	-4.49%	-0.67%	-25.50%	95.00%	179,207	0.77	1.75	40.97	753.44	Industrial	3.00%
▲ VOLCABC1 PE**	S/.	0.48	1.70%	7.90%	21.01%	7.42%	100.00%	171,401	0.82	0.00	-	1,823.97	Mining	5.90%
- NEXAPEC1 PE**	S/.	2.75	0.00%	-1.79%	5.77%	-20.29%	50.00%	4,015	0.99	0.00	-	1,011.36	Mining	1.56%

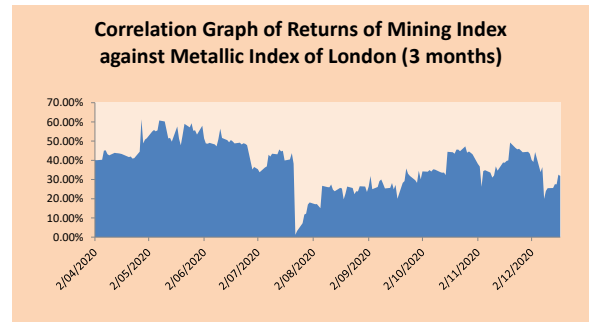
Quantity of shares: 26
 Source: Bloomberg, Economática
 * Bloomberg Industry Classification System
 ** PER is used in the stock market and original currency of the instrument
 *Legend: Variation 1D: 1 Day; 5D: 5 Days, 1M: 1 Month; YTD: Var.% 12/31/19 to date

Sectorial Indices

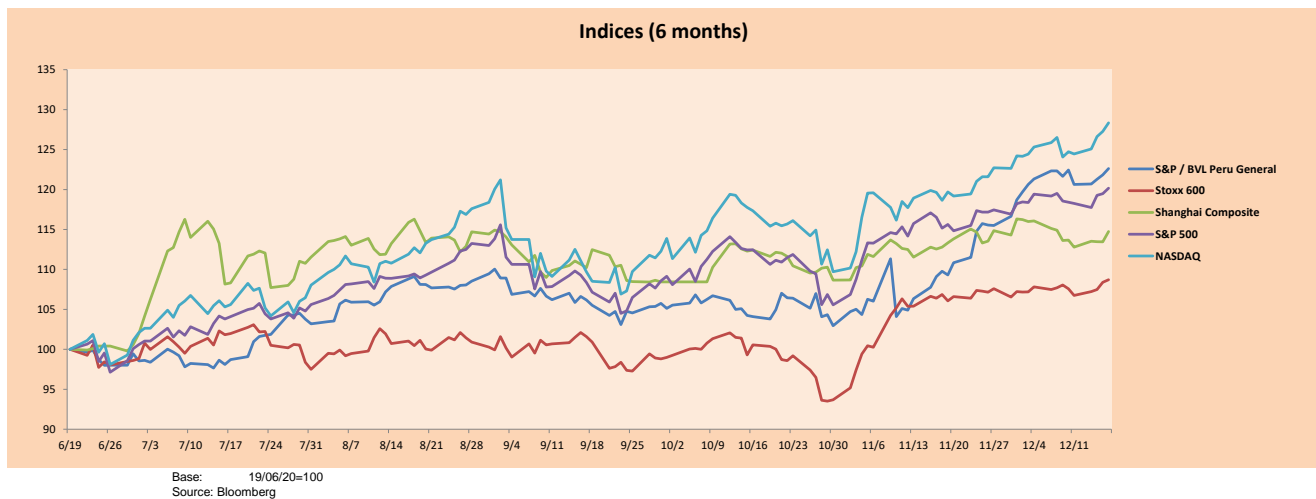
	Close	1D*	5D*	30D*	YTD*	Beta
▲ S&P/BVLMining	384.24	0.11%	4.52%	12.81%	26.12%	0.93
▲ S&P/BVLConsumer	1,042.71	0.16%	-0.47%	2.78%	-8.55%	0.37
▲ S&P/BVLIndustrials	190.58	-1.24%	-1.69%	2.08%	-9.73%	0.48
▼ S&P/BVLFinancials	1,028.59	-0.57%	0.38%	18.84%	-12.80%	1.66
▼ S&P/BVLConstruction	207.30	-2.00%	-2.86%	2.25%	-8.53%	0.49
- S&P/BVLPublicSvcs	626.17	0.00%	1.60%	2.84%	-3.89%	0.09
- S&P/BVLElectricUtil	611.30	0.00%	1.60%	2.84%	-3.89%	0.09

S&P/BVLConstructionTRPEN

*Legend: Variation 1D: 1 Day; 5D: 5 Days, 1M: 1 Month; YTD: Var.% 12/31/19 to date



Indices (6 months)



Capital Market Laboratory Coordinator: Economist Bruno Bellido
 Collaboration: Piero Best, Luis Davila, Laura Delgado and Alonso Hernández
 email: pulsohorsatil@ulima.edu.pe
 facebook: www.facebook.com/pulsohorsatil.ul

The content of this document is just for informational purposes. The information and opinions expressed should not be consider as recommendations for future decisions. Under any circumstances, the Capital Market Laboratory of University of Lima will be responsible for the use of the statements in this document.

SOVEREIGN RATING

RISK RATINGS

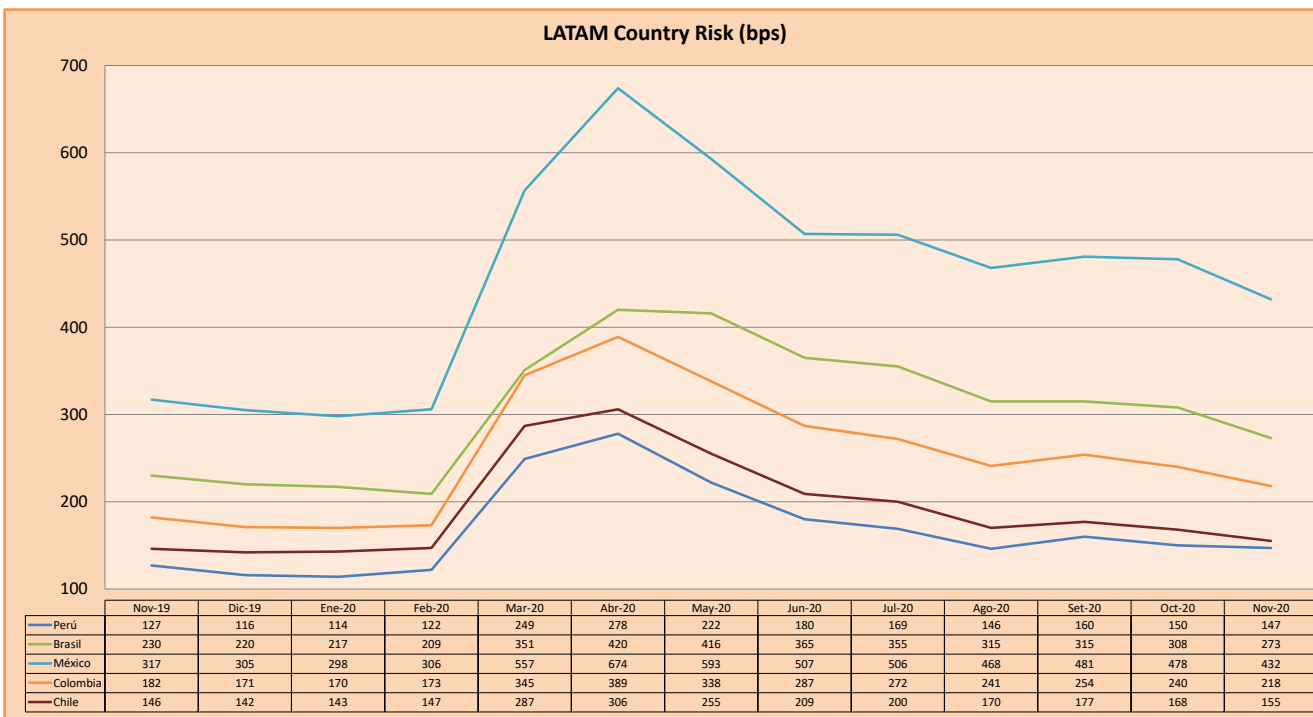
Moody's	S&P	Fitch	
Aaa	AAA	AAA	Prime
Aa1	AA+	AA+	High credit quality
Aa2	AA	AA	
Aa3	AA-	AA-	
A1	A+	A+	Medium-high grade, with low credit risk
A2	A	A	
A3	A-	A-	
Baa1	BBB+	BBB+	Moderate Credit Risk
Baa2	BBB	BBB	
Baa3	BBB-	BBB-	
Ba1	BB+	BB+	It has speculative elements and it is subject to substantial credit risk
Ba2	BB	BB	
Ba3	BB-	BB-	
B1	B+	B+	It is considered speculative and it has high credit risk
B2	B	B	
B3	B-	B-	
Caa1	CCC+		Bad credit conditions and it is subject to high credit risk
Caa2	CCC		
Caa3	CCC-		
Ca	CC	CCC	Very close to default or in default
	C		
C	D	DDD DD D	

Source: Bloomberg

Latin America Credit Rating			
Clasificadora de riesgo			
Country	Moody's	Fitch	S&P
Peru	A3	BBB+	BBB+
México	Ba2	BB-	BB-
Venezuela	C	WD	SD
Brazil	Ba2	BB-	BB-
Colombia	Baa2	BBB-	BBB-
Chile	A1	A-	A+
Argentina	Ca	WD	CCC+
Panama	Baa1	BBB	BBB

Source: Bloomberg

LATAM Country Risk (bps)



Source: BCRP

Capital Market Laboratory Coordinator: Economist Bruno Bellido
Collaboration: Piero Best, Luis Davila, Laura Delgado and Alonso Hernández
email: pulsobursatil@ulima.edu.pe
facebook: www.facebook.com/pulsobursatil.ul