

PULSO BURSÁTIL

FACULTAD DE CIENCIAS EMPRESARIALES Y ECONÓMICAS
CARRERA DE ECONOMÍA
LABORATORIO DE MERCADO DE CAPITALES

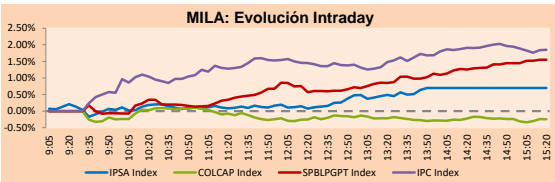


MILA

Lima, February 9, 2021

Main Indexes	Close	1 D	5 D	1 M	YTD	Cap. Burs. (US\$ bill)
▲ IPSA (Chile)	4,542.72	1.24%	2.85%	-0.38%	8.75%	121.32
▲ IGPA (Chile)	22,905.83	1.16%	2.65%	0.40%	9.04%	150.49
▼ COLCAP (Colombia)	1,054.71	-1.52%	-2.05%	-1.32%	-0.40%	5.65
▼ COLCAP (Colombia)	1,380.29	-0.22%	0.88%	-5.01%	-4.01%	81.17
▲ S&P/BVL (Perú)*	22,310.78	1.68%	4.00%	3.17%	7.15%	114.82
▲ S&P/BVL SEL (Perú)	597.92	1.19%	3.20%	3.64%	8.43%	94.15
▲ S&P/BVL LIMA 25	29,094.77	2.54%	4.80%	9.28%	15.46%	113.86
▲ IPC (México)	45,020.96	1.86%	2.67%	-3.66%	2.17%	286.26
▲ S&P MILA 40	538.92	0.84%	2.25%	-4.20%	0.80%	5,753.02

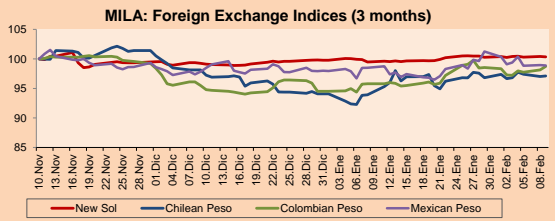
*Legend: Variation 1D: 1 day; 5D: 5 days; 1M: 1 Month; YTD: Var% 12/31/20 to date



Source: Bloomberg

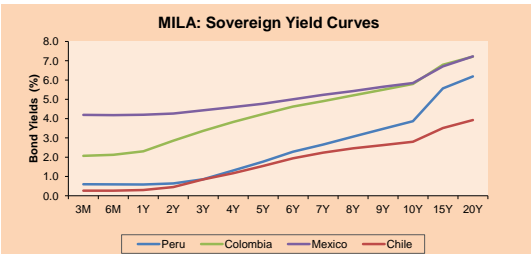
Currency	Price	1D*	5D*	30 D*	YTD*
▼ New Sol (PEN)	3.6386	-0.07%	0.09%	0.86%	0.57%
▲ Chilean Peso (CLP)	734.74	0.09%	0.47%	3.39%	3.23%
▲ Colombian Peso (COP)	3,582.55	0.59%	1.48%	3.07%	4.46%
▼ Mexican Peso (MXN)	20.10	-0.07%	-0.19%	0.41%	0.92%

*Legend: Variation 1D: 1 day; 5D: 5 days; 1M: 1 Month; YTD: Var% 12/31/20 to date



Base: 10/11/20=100
Source: Bloomberg

Fixed Income	Currency	Price	Bid Yield (%)	Ask Yield (%)	Duration
PERU 7.35 07/21/25	USD	127.048	1.14	1.05	3.92
PERU 4.125 08/25/27	USD	116.067	1.57	1.50	5.77
PERU 8.75 11/21/33	USD	166.125	2.66	2.59	8.98
PERU 6.55 03/14/37	USD	146.837	2.92	2.86	10.65
PERU 5.625 11/18/2050	USD	148.328	3.14	3.10	17.31
CHILE 2.25 10/30/22	USD	103.403	0.38	0.15	1.68
CHILE 3.125 01/21/26	USD	110.744	0.95	0.85	4.63
CHILE 3.625 10/30/42	USD	112.06	2.89	2.86	15.70
COLOM 11.85 03/09/28	USD	162.513	2.36	2.14	5.28
COLOM 10.375 01/28/33	USD	161.937	3.98	3.74	8.10
COLOM 7.375 09/18/37	USD	140.58	4.04	3.97	10.68
COLOM 6.125 01/18/41	USD	128.346	4.07	4.01	12.75
MEX 4 10/02/23	USD	128.346	4.072	4.01	12.75
MEX5.55 01/45	USD	124.908	3.95	3.92	14.59



Source: Bloomberg

Equity

Largest gains	Exchange	Currency	Price	▲ %
VOLCAN CIA MIN-B	Peru	PEN	0.80	6.67
KIMBERLY-CLA M-A	Mexico	MXN	36.82	4.54
GRUPO FIN INB-O	Mexico	MXN	19.92	4.29
GRUPO F BANORT-O	Mexico	MXN	114.60	4.13
CENCOSUD SA	Chile	CLP	1369.90	3.86

Per Turnover	Exchange	Amount (US\$)
GRUPO F BANORT-O	Mexico	89,104,688
WALMART DE MEXIC	Mexico	48,313,511
AMERICA MOVIL-L	Mexico	37,545,776
GRUPO MEXICO-B	Mexico	22,990,252
FOMENTO ECON-UBD	Mexico	21,486,921

Largest losses	Exchange	Currency	Price	▼ %
SOQUIMICH-B	Chile	CLP	39799	-2.62
SOUTHERN COPPER	Peru	USD	70.74	-1.44
GRUPO ENERGIA BO	Colombia	COP	2620	-1.09
AERO DEL PACIF-B	Mexico	MXN	209.76	-1.03
CEMENTOS ARGOS	Colombia	COP	5810	-1.02

Per Volume	Exchange	Volume
BANCO SANTANDER	Chile	149,579,423
BANCO DE CHILE	Chile	99,246,186
ITAU CORPBANCA	Chile	72,133,941
AMERICA MOVIL-L	Mexico	54,408,061
ENEL AMERICAS SA	Chile	50,223,430

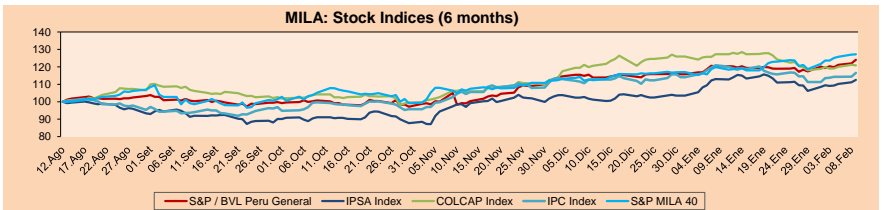
MILA

Peru: The General Index of the BVL ended today's session with a positive result of +1.68%. The index maintains an annual accumulated positive trend of +7.15% in local, while the adjusted yield in dollars amounts to +6.47%. Then, the S&P / BVL Peru SEL varied by +1.19% while the S&P / BVL LIMA 25 by +2.54%. The PEN spot reached \$ / 3.6386. Headline: In 14 financial institutions the default rate for loans already exceeds 10%

Chile: The IPSA index ended the day with a positive return of +1.24%. The sectors that benefited the most during the session were Energy (+2.84%) and Non-Basic Consumer Products (+2.03%). The stocks with the best performance were Cencosud SA (+3.86%) and Empresas CMPC SA (+3.79%). Headline: Chile will expel a hundred irregular migrants and seeks to increase border control

Colombia: The COLCAP index closed today with a negative return of -0.22%. The sectors most affected in the session were First Needs Products (-0.95%) and Materials (-0.68%). The worst performing stocks were Cementos Argos (-1.93%) and Canacol Energy Ltd (-1.82%). Headline: Colombia will carry out mining round to assign gold and copper exploration areas

Mexico: The IPC index closed the day with a positive return of +1.86%. The sectors that benefited the most during the session were Finance (+2.78%) and Basic Products (+2.33%). The best performing stocks were Kimberly Clark de México SAB (+4.54%) and Grupo Financiero Inbursa SA (+4.29%). Headline: State oil companies risk wasting \$ 400bn as energy change accelerates

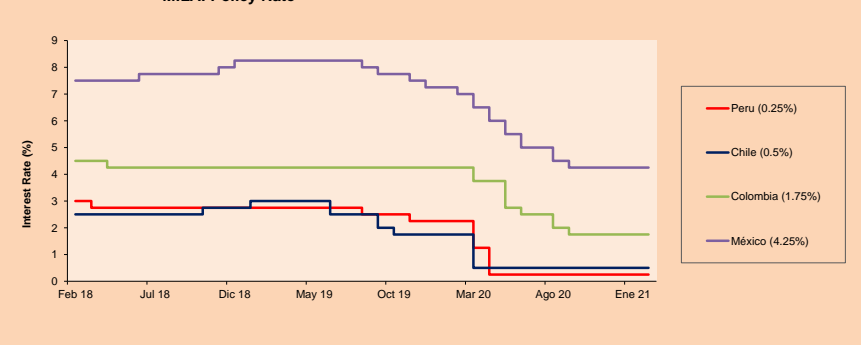


Base: 13/08/20=100
Source: Bloomberg

ETFs

ETFs	Curr.	Close	1D	5D	30 D	YTD	Exchange
▲ iShares MSCI All Peru Caped Index Fund	USD	37.4	1.36%	5.96%	3.31%	7.84%	NYSE Arca
▲ iShares MSCI All Chile Caped Index Fund	USD	31.62	0.84%	3.16%	-2.66%	4.67%	Cboe BZX
▼ Global X MSCI Colombia	USD	10.51	-0.71%	0.00%	-7.56%	-7.48%	NYSE Arca
▲ iShares MSCI Mexico Capped	USD	42.92	1.83%	3.15%	-4.81%	-0.16%	NYSE Arca
▲ iShares FTSE Emerging Markets	USD	56.94	1.06%	2.67%	4.08%	10.20%	NYSE Arca
▲ Vanguard FTSE Emerging Markets	USD	55.39	1.11%	2.92%	5.59%	10.54%	NYSE Arca
▲ iShares Core MSCI Emerging Markets	USD	68.24	0.98%	2.57%	4.12%	9.99%	NYSE Arca
▲ iShares JP Morgan Emerging Markets Bonds	USD	64.32	0.75%	1.63%	1.39%	5.30%	Cboe BZX
▲ Morgan Stanley Emerging Markets Domestic	USD	6.21	0.49%	0.65%	0.16%	-1.27%	New York

MILA: Policy Rate



Source: Bloomberg

Capital Market Laboratory Coordinator: Economist Bruno Bellido
Collaboration: Piero Best, Maria Camarena, Alonso Stephen Hernández and Adrian Paredes
email: pulsobursatil@ulima.edu.pe
facebook: www.facebook.com/pulsobursatil.ul

The content of this document is just for informational purposes. The information and opinions expressed should not be considered as recommendations for future decisions. Under any circumstances, the Capital Market Laboratory of University of Lima will be responsible for the use of the statements in this document.

WORLD

Main Indices	Close	1 D*	5 D*	1 M*	YTD*	Market Cap. (US\$ Mill.)
▼ Dow Jones (USA)	31,375.83	-0.03%	2.24%	0.89%	2.51%	9,877,372
▲ Standard & Poor's 500 (EEUU)	3,911.23	-0.11%	2.22%	2.26%	4.13%	34,567,493
▲ NASDAQ Composite (USA)	14,007.70	0.14%	2.90%	6.10%	8.69%	22,777,047
▼ Stoxx EUROPE 600 (Europe)	410.42	-0.09%	1.11%	-0.18%	2.85%	9,327,285
▼ DAX (Germany)	14,011.80	-0.34%	1.28%	-0.27%	2.14%	1,050,285
▲ FTSE 100 (United Kingdom)	6,531.56	0.12%	0.23%	-4.97%	1.10%	1,370,705
▲ CAC 40 (France)	5,691.54	0.10%	2.31%	-0.27%	2.52%	1,536,765
▲ IBEX 35 (Spain)	8,101.00	-1.44%	1.89%	-3.65%	0.34%	439,785
▲ MSCI AC Asia Pacific Index	216.07	0.61%	2.87%	3.77%	8.08%	27,337,861
▲ HANG SENG (Hong Kong)	29,476.19	0.53%	0.78%	7.61%	10.17%	4,592,098
▲ SHANGHAI SE Comp. (China)	3,603.49	2.01%	1.98%	1.79%	4.64%	6,859,124
▲ NIKKEI 225 (Japan)	29,505.93	0.40%	4.03%	4.89%	7.55%	4,080,506
▼ S&P / ASX 200 (Australia)	6,821.23	-0.86%	0.87%	1.52%	4.15%	1,673,747
▼ KOSPI (South Korea)	3,084.67	1.86%	2.67%	-2.28%	7.20%	1,838,252

*Legend: Variation 1D: 1 Day; 5D: 5 Days; 1M: 1 Month; YTD: Var.% 12/31/20 to date

Equity

Germany (Stocks from DAX Index)

Largest gains	Curr.	Price	▲%	Exchange	Largest losses	Curr.	Price	▼%	Exchange
ADS GY	EUR	284.5	2.15	Xetra	IFX GY	EUR	34.69	-2.06	Xetra
HEI GY	EUR	63.06	1.48	Xetra	1COV GY	EUR	58.4	-1.62	Xetra
FRE GY	EUR	35.02	0.86	Xetra	LIN GY	EUR	211.6	-1.35	Xetra
DWNI GY	EUR	41.42	0.85	Xetra	DBK GY	EUR	8.643	-1.18	Xetra

Europe (Stocks from STOXX EUROPE 600)

Largest gains	Curr.	Price	▲%	Exchange	Largest losses	Curr.	Price	▼%	Exchange
SOON SE	CHF	233.7	4.66	SIX Swiss Ex	FTI FP	EUR	8.266	-7.64	EN Paris
GALP PL	EUR	8.872	3.89	EN Lisbon	AMS SE	CHF	22.92	-7.06	SIX Swiss Ex
AROX BB	EUR	311.2	3.73	EN Brussels	NENTB SS	SEK	423.2	-5.87	Stockholm
LI FP	EUR	18.61	3.36	EN Paris	TYRES FH	EUR	30.7	-5.86	Helsinki

Global Overview:

United States:

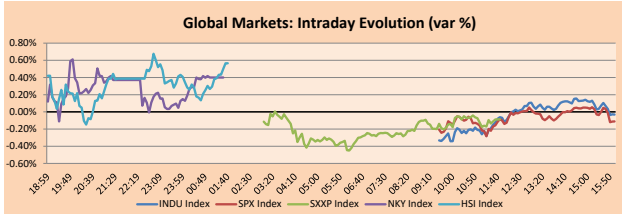
U.S. markets closed today's session with mixed results. Investors are keeping an eye on the progress of Joe Biden's promised economic stimulus plan. At the same time, lawmakers are closing in on another economic aid bill, which contains \$1400 stimulus checks, state and local aid, and an extension of jobless benefits. Goldman Sachs economists raised their forecast for annual U.S. GDP growth for 2021 and 2022, estimating growth of 6.8% and 4.5%, respectively. Meanwhile, the dollar fell to a two-week low despite a recovery in Treasury yields. Investors are bracing for the Treasury Department to set new long-term debt in the coming weeks. Elsewhere, bitcoin reached near \$48000, up nearly 10% on the day, after Tesla revealed it had bought \$1.5 billion in cryptocurrencies at the start of the week. Similarly, oil prices rose for the seventh consecutive session to \$58.36 a barrel and gold rebounded to \$1836.60 an ounce. In conclusion, the main indexes: S&P 500 -0.11% and DJIA -0.03%, but NASDAQ +0.14%, closed the day with mixed performances.

Europe:

Major European markets ended today's session mostly lower due to massive profit taking after last week's rally. The main pan-European Stoxx 600 index closed the day with negative returns dragged down by the utilities -1.60% and industrials -0.83% after the EU announced the closing of a deal with Pfizer and BioNTech for the supply of an additional 300 million doses of its vaccine. Similarly, the main German index DAX closed lower after reaching a record high yesterday after a report showed a slowdown in German export growth to 0.1% compared to 2.3% in November. Elsewhere, in London, the FTSE 100 ended the day with positive returns despite a decline in retail sales by -1.3%, according to data from the British Retail Consortium. In addition, the transportation sector of the index was largely affected by the recent increase in restrictions, specifically in the airline sector -3.33%. Thus, Stoxx 600 -0.09%, FTSE 100 +0.64%, CAC 40 +0.10%, DAX -0.40% closed mostly lower.

Asia:

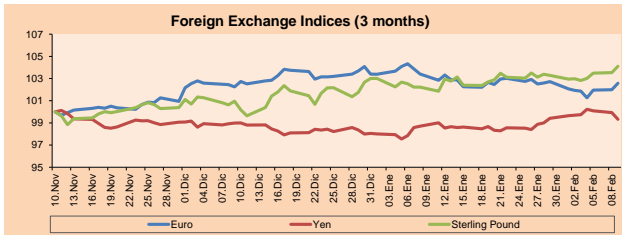
Asian markets ended trading mostly higher, amid lower transaction volumes, as the Lunar New Year holidays approach. In Hong Kong, energy companies were the biggest winners after oil prices soared, as market sentiment eased for a faster economic recovery, according to Reuters. The Hang Seng energy equities sub-index gained +2.7%. For their part, oil prices reached 13-month records. In addition, optimism among investors about the US aid package and the launch of vaccines continues, leading to demand for riskier assets in the region, according to Sim Moh Siong of Bank of Singapore. However, investors are also monitoring the decisions of central banks in the region to assess their response to seasonal demand for cash before the holidays. On the other hand, in China, big tech stocks have increased the hiring of legal experts and set aside funds for likely fines following a crackdown by regulators, according to Reuters. Thus, the Shanghai Composite +2.01%, Shenzhen +2.36%, Hang Seng +0.53%, Nikkei +0.4% and Singapore STI +0.13% closed higher, among other indices.



Source: Bloomberg

Currency	Price	1 D*	5 D*	1 M*	YTD*
▲ Euro	1.2119	0.57%	0.62%	-0.81%	-0.79%
▼ Yen	104.5900	-0.61%	-0.37%	0.63%	1.30%
▲ Sterling Pound	1.3817	0.55%	1.09%	1.84%	1.08%
▼ Yuan	6.4353	-0.20%	-0.34%	-0.61%	-1.41%
▼ Hong Kong Dollar	7.7518	-0.01%	0.00%	-0.06%	-0.02%
▲ Brazilian Real	5.3824	0.46%	0.43%	-0.72%	3.54%
▲ Argentine Peso	88.2640	0.11%	0.64%	3.69%	4.89%

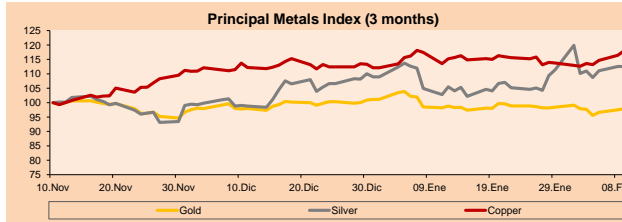
*Legend: Variation 1D: 1 Day; 5D: 5 Days; 1M: 1 Month; YTD: Var.% 12/31/20 to date



Base: 10/11/20=100
Source: Bloomberg

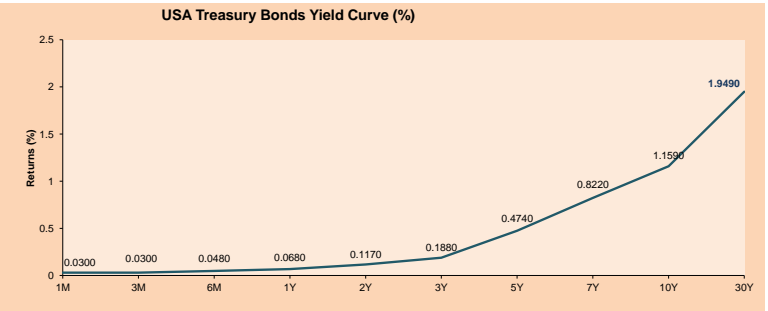
Commodities	Close	1 D*	5 D*	1 M*	YTD*
▲ Oro (US\$ Oz. T) (LME)	1,838.32	0.41%	0.02%	-0.58%	-3.19%
▼ Plata (US\$ Oz. T) (LME)	27.27	-0.02%	2.20%	7.25%	3.28%
▲ Cobre (US\$ TM) (LME)	4,157.75	1.33%	4.76%	0.49%	5.27%
▲ Zinc (US\$ TM) (LME)	2,672.25	1.74%	5.18%	-4.01%	-1.91%
▲ Petróleo WTI (US\$ Barril) (NYM)	58.36	0.67%	6.57%	11.67%	20.01%
▲ España (US\$ TM) (LME)	24,445.00	1.56%	-0.12%	15.13%	18.99%
▲ Plomo (US\$ TM) (LME)	2,067.25	0.30%	3.34%	4.37%	4.63%
▲ Acaúcar #11 (US\$ Libra) (NYB-ICE)	15.76	0.96%	2.67%	6.70%	7.36%
▼ Cacao (US\$ TM) (NYB-ICE)	2,430.00	-0.61%	-2.76%	-1.22%	-4.14%
▼ Café Arábica (US\$ TM) (NYB-ICE)	125.00	-0.99%	-0.44%	-0.60%	-3.96%

*Legend: Variación 1D: 1 Día; 5D: 5 Días; 1M: 1 Mes; YTD: Var.% 31/12/20 a la fecha



Base: 10/11/20=100
Source: Bloomberg

ETFs	Curr.	Close	1D	5D	30 D	YTD	Exchange
SPDR S&P 500 ETF TRUST	USD	390.25	-0.07%	2.28%	2.36%	4.38%	NYSE Arca
ISHARES MSCI EMERGING MARKET	USD	56.94	1.06%	2.67%	4.08%	10.20%	NYSE Arca
ISHARES IBOXX HIGH YLD CORP	USD	87.62	-0.18%	0.55%	0.29%	0.37%	NYSE Arca
FINANCIAL SELECT SECTOR SPDR	USD	31.30	0.03%	4.19%	1.23%	6.17%	NYSE Arca
VANECK GOLD MINERS	USD	36.18	-0.11%	1.62%	-3.67%	-2.33%	NYSE Arca
ISHARES RUSSELL 2000 ETF	USD	228.38	0.47%	6.91%	9.95%	16.48%	NYSE Arca
SPDR GOLD SHARES	USD	172.08	0.33%	-0.02%	-0.73%	-3.52%	NYSE Arca
ISHARES 20+ YEAR TREASURY BO	USD	148.79	0.07%	-1.48%	-1.67%	-5.67%	NASDAQ GM
INVESCO QQQ TRUST SERIES 1	USD	333.51	-0.02%	1.78%	4.54%	6.30%	NASDAQ GM
ISHARES NASDAQ BIOTECHNOLOGY	USD	171.66	-0.54%	4.35%	8.49%	13.31%	NASDAQ GM
ENERGY SELECT SECTOR SPDR	USD	43.87	-1.06%	9.59%	5.52%	15.75%	NYSE Arca
PROSHARES ULTRA VIX ST FLUTR	USD	10.01	0.30%	-14.59%	-1.95%	-6.01%	Cboe BZX
UNITED STATES OIL FUND LP	USD	39.17	0.59%	6.38%	10.56%	18.66%	NYSE Arca
ISHARES MSCI BRAZIL ETF	USD	36.01	-0.72%	0.92%	-4.48%	-2.86%	NYSE Arca
SPDR S&P OIL & GAS EXP & PR	USD	73.22	-1.73%	11.02%	11.79%	25.16%	NYSE Arca
UTILITIES SELECT SECTOR SPDR	USD	63.19	0.14%	0.37%	1.38%	0.78%	NYSE Arca
ISHARES US REAL ESTATE ETF	USD	88.87	0.44%	1.21%	6.46%	3.76%	NYSE Arca
SPDR S&P BIOTECH ETF	USD	171.86	-1.22%	5.28%	14.93%	22.08%	NYSE Arca
ISHARES IBOXX INVESTMENT GRA	USD	135.16	-0.16%	-0.06%	-0.44%	-2.15%	NYSE Arca
ISHARES JP MORGAN USD EMERGI	USD	113.81	-0.36%	-0.21%	-0.64%	-1.81%	NASDAQ GM
REAL ESTATE SELECT SECT SPDR	USD	38.19	0.45%	1.17%	7.09%	4.46%	NYSE Arca
ISHARES CHINA LARGE-CAP ETF	USD	52.20	1.32%	1.50%	8.03%	12.43%	NYSE Arca
CONSUMER STAPLES SPDR	USD	65.95	-0.09%	2.12%	-1.42%	-2.22%	NYSE Arca
VANECK JR GOLD MINERS	USD	50.82	-0.70%	1.24%	-5.29%	-6.31%	NYSE Arca
SPDR BBG BARG HIGH YIELD BND	USD	109.34	-0.20%	0.50%	0.79%	0.37%	NYSE Arca
VANGUARD REAL ESTATE ETF	USD	88.90	0.35%	1.69%	7.02%	4.67%	NYSE Arca
GRAYSCALE BITCOIN TRUST BTC	USD	47.90	4.84%	30.16%	7.83%	49.69%	OTC US



Source: Bloomberg

LIMA

Stocks

Ticker	Currency	Price	1D*	5D*	30D*	YTD*	Frequency	Volume (US\$)	Beta	Dividend Yield (%)	Price Earning	Market Cap. (M US\$)	Economic Sector*	Index Weight
▼ ALICORC1 PE**	S/.	8.32	-1.52%	-2.05%	-1.32%	-0.40%	100.00%	1,496,919	0.73	3.00	19.13	1,949.37	Industrial	3.53%
▲ ATACOB1 PE**	S/.	0.17	3.13%	8.55%	10.74%	19.57%	90.00%	50,987	1.09	0.00	-	42.84	Mining	1.02%
▲ BACKUS1 PE**	S/.	23.70	3.95%	5.33%	10.23%	17.62%	80.00%	29,216	0.53	1.48	10.72	8,815.73	Industrial	0.82%
▲ BAP PE**	US\$	164.70	3.58%	7.28%	-0.18%	2.55%	100.00%	391,623	1.63	5.34	-	15,544.77	Diverse	5.82%
▼ BVN PE**	US\$	10.30	-0.29%	-3.74%	-9.65%	-14.17%	95.00%	252,470	1.26	0.00	-	2,839.04	Mining	5.88%
▲ CASAGRC1 PE**	S/.	6.20	3.33%	6.53%	13.76%	30.53%	65.00%	62,095	0.70	3.64	11.13	143.53	Agricultural	1.31%
▲ BBVAC1 PE**	S/.	2.46	1.23%	2.50%	8.37%	13.36%	95.00%	93,917	0.74	3.51	17.74	4,414.27	Finance	2.85%
▲ CORARE1 PE**	S/.	1.15	8.49%	10.58%	27.78%	29.21%	100.00%	35,130	0.62	6.07	6.86	405.20	Industrial	1.72%
▲ CPACASC1 PE**	S/.	6.16	0.98%	5.12%	9.03%	16.23%	100.00%	1,816,960	0.57	3.73	19.87	785.78	Industrial	2.38%
▲ CVERDEC1 PE**	US\$	23.80	4.62%	8.18%	6.25%	13.77%	100.00%	530,401	0.81	0.00	38.69	8,331.33	Mining	5.25%
▲ ENGEPEC1 PE**	S/.	2.40	2.56%	2.13%	14.29%	20.00%	75.00%	29,528	0.48	9.16	12.06	1,872.42	Public Services	1.44%
▲ ENDISPC1**	S/.	6.30	1.61%	5.00%	14.55%	16.67%	90.00%	64,776	0.48	0.00	11.89	1,105.63	Public Services	0.98%
▲ FERREYC1 PE**	S/.	2.03	2.01%	-0.98%	6.84%	16.67%	100.00%	557,062	0.60	3.78	27.40	544.34	Diverse	4.90%
▲ AENZAC1 PE**	S/.	1.81	1.69%	0.56%	5.23%	4.02%	90.00%	87,587	0.80	0.00	-	433.73	Diverse	4.05%
▲ IFS PE**	US\$	33.00	1.54%	5.16%	-2.94%	6.66%	100.00%	144,418	1.36	5.30	33.19	3,809.77	Diverse	7.22%
▲ INRETC1 PE**	US\$	43.90	0.92%	4.52%	5.02%	11.99%	100.00%	927,279	0.61	1.29	35.80	4,513.24	Diverse	5.28%
▼ LUSURC1 PE**	S/.	28.10	-1.06%	0.36%	8.70%	10.20%	90.00%	225,344	0.56	2.48	27.58	3,760.60	Public Services	1.81%
▲ MINSUR1 PE**	S/.	2.42	7.56%	7.56%	22.22%	30.81%	85.00%	10,857,352	0.75	0.00	-	1,917.46	Mining	3.09%
▲ PML PE**	US\$	0.15	11.54%	20.83%	-9.38%	36.79%	50.00%	34,970	1.46	0.00	-	38.31	Mining	2.12%
▲ RELAPAC1 PE**	S/.	0.08	2.60%	6.76%	9.72%	14.49%	100.00%	44,150	0.48	0.00	-	180.62	Industrial	2.12%
▼ SCCO PE**	US\$	70.74	-1.44%	4.75%	-0.51%	7.34%	75.00%	19,210	0.73	2.40	32.88	54,687.20	Mining	2.14%
▲ SIDERC1 PE**	S/.	1.00	2.04%	8.70%	17.65%	17.65%	95.00%	96,297	0.84	34.22	11.88	337.47	Industrial	1.43%
▲ TV PE**	US\$	0.17	8.12%	8.12%	-4.42%	17.69%	100.00%	62,560	1.50	0.00	-	171.11	Mining	2.93%
▲ UNACEMC1 PE**	S/.	1.81	0.56%	4.62%	12.42%	16.77%	100.00%	242,604	0.82	0.72	49.77	904.42	Industrial	3.00%
▲ VOLCABC1 PE**	S/.	0.80	6.67%	11.11%	45.45%	53.85%	100.00%	8,309,666	0.96	0.00	-	2,018.58	Mining	5.90%
▲ NEXAPEC1 PE**	S/.	3.80	4.11%	13.43%	24.18%	34.28%	65.00%	20,831	1.03	0.00	-	1,378.84	Mining	1.56%

Quantity of shares: 26
 Source: Bloomberg, Economática
 * Bloomberg Industry Classification System
 ** PER is used in the stock market and original currency of the instrument
 *Legend: Variation 1D: 1 Day; 5D: 5 Days; 1M: 1 Month; YTD: Var.% 12/31/20 to date

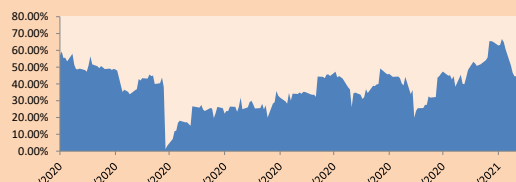
Sectorial Indices

	Close	1D*	5D*	30D*	YTD*	Beta
▲ S&P/BVLMining	412.18	0.53%	4.12%	1.53%	5.70%	0.81
▲ S&P/BVLConsumer	1,252.51	1.00%	3.57%	5.39%	15.05%	0.41
▲ S&P/BVLIndustrials	216.93	1.42%	2.47%	8.84%	13.84%	0.52
▲ S&P/BVLFinancials	1,072.78	3.19%	6.93%	0.67%	3.76%	1.76
▲ S&P/BVLConstruction	235.73	1.17%	3.88%	9.66%	12.72%	0.54
▲ S&P/BVLPublicSvcs	681.47	0.10%	1.26%	8.46%	10.97%	0.17
▲ S&P/BVLElectricUtil	665.28	0.10%	1.26%	8.45%	10.97%	0.17

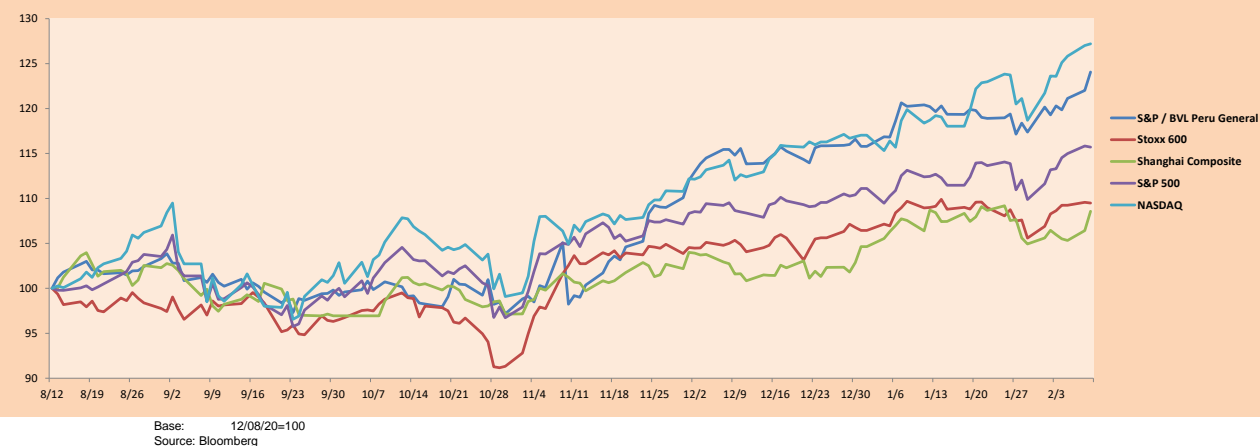
S&P/BVLConstructionTRPEN

*Legend: Variation 1D: 1 Day; 5D: 5 Days; 1M: 1 Month; YTD: Var.% 12/31/20 to date

Correlation Graph of Returns of Mining Index against Metallic Index of London (3 months)



Indices (6 months)



Base: 12/08/20=100
 Source: Bloomberg

Capital Market Laboratory Coordinator: Economist Bruno Bellido
 Collaboration: Piero Best, Maria Camarena, Alonso Stephen Hernández and Adrian Paredes
 email: pulsohorsatil@ulima.edu.pe
 facebook: www.facebook.com/pulsohorsatil.ul

SOVEREIGN RATING

RISK RATINGS

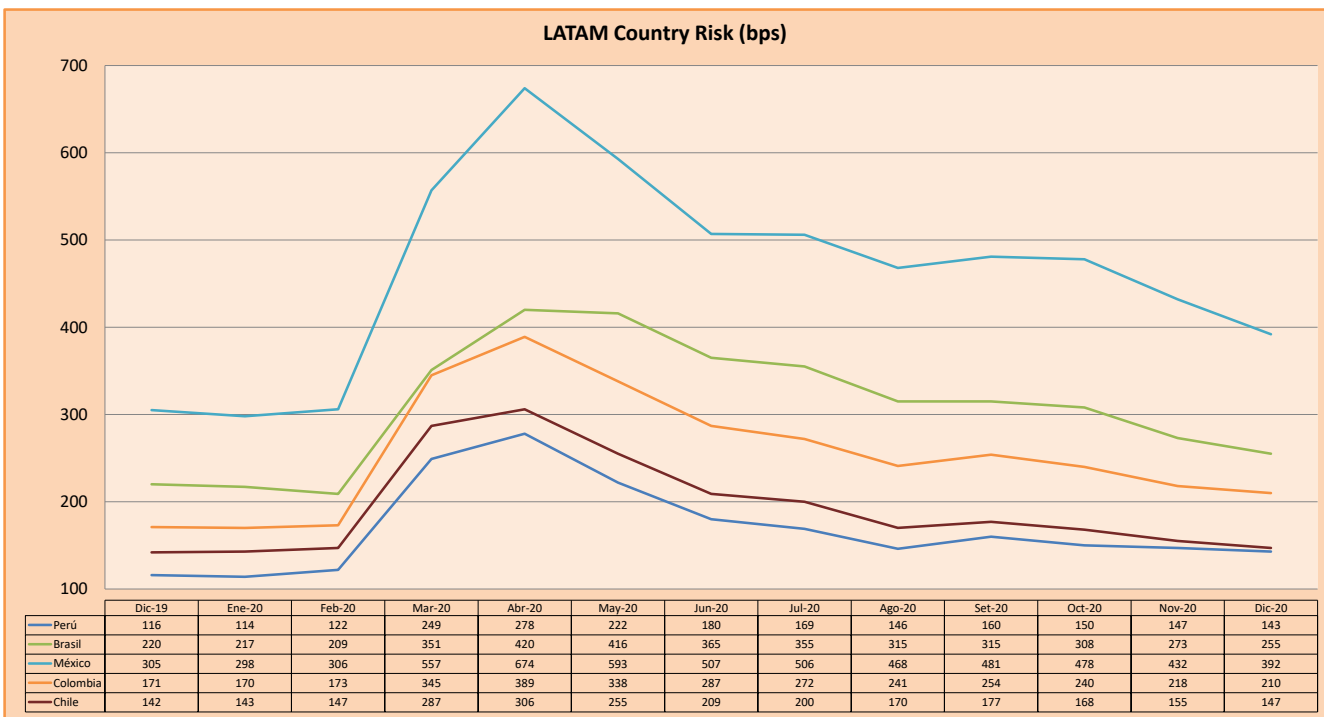
Moody's	S&P	Fitch	
Aaa	AAA	AAA	Prime
Aa1	AA+	AA+	High credit quality
Aa2	AA	AA	
Aa3	AA-	AA-	
A1	A+	A+	Medium-high grade, with low credit risk
A2	A	A	
A3	A-	A-	
Baa1	BBB+	BBB+	Moderate Credit Risk
Baa2	BBB	BBB	
Baa3	BBB-	BBB-	
Ba1	BB+	BB+	It has speculative elements and it is subject to substantial credit risk
Ba2	BB	BB	
Ba3	BB-	BB-	
B1	B+	B+	It is considered speculative and it has high credit risk
B2	B	B	
B3	B-	B-	
Caa1	CCC+		Bad credit conditions and it is subject to high credit risk
Caa2	CCC		
Caa3	CCC-	CCC	
Ca	C		Very close to default or in default
		DDD	
C	D	DD D	

Source: Bloomberg

Latin America Credit Rating			
Clasificadora de riesgo			
Country	Moody's	Fitch	S&P
Peru	A3	BBB+	BBB+
México	Ba2	BB-	BB-
Venezuela	C	WD	SD
Brazil	Ba2	BB-	BB-
Colombia	Baa2	BBB-	BBB-
Chile	A1	A-	A+
Argentina	Ca	WD	CCC+
Panama	Baa1	BBB-	BBB

Source: Bloomberg

LATAM Country Risk (bps)



Source: BCRP

Capital Market Laboratory Coordinator: Economist Bruno Bellido
Collaboration: Piero Best, Maria Camarena, Alonso Stephen Hernández and Adrian Paredes
email: pulsohorsatil@ulima.edu.pe
facebook: www.facebook.com/pulsohorsatil.ul

The content of this document is just for informational purposes. The information and opinions expressed should not be considered as recommendations for future decisions. Under any circumstances, the Capital Market Laboratory of University of Lima will be responsible for the use of the statements in this document.