

# PULSO BURSÁTIL

FACULTAD DE CIENCIAS EMPRESARIALES Y ECONÓMICAS  
CARRERA DE ECONOMÍA  
LABORATORIO DE MERCADO DE CAPITALES

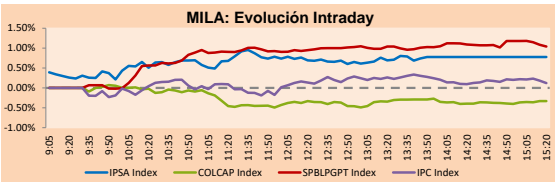


## MILA

Lima, February 12, 2021

Main Indexes	Close	1 D	5 D	1 M	YTD	Cap. Burs. (US\$ bill)
▲ IPSA (Chile)	4,599.09	1.12%	3.36%	0.59%	10.10%	124.88
▲ IGPA (Chile)	23,201.71	1.09%	3.22%	1.00%	10.45%	154.95
▲ COLCAP (Colombia)	1,079.92	0.87%	0.72%	0.41%	1.98%	81.93
▼ COLCAP (Colombia)	1,365.95	-0.13%	-0.33%	-5.96%	-5.00%	81.93
▲ S&P/BVL (Perú)*	22,413.98	1.18%	2.89%	4.42%	7.64%	115.79
▲ S&P/BVL SEL (Perú)	596.13	0.77%	1.54%	3.22%	8.11%	94.99
▲ S&P/BVL LIMA 25	29,194.99	0.73%	4.16%	9.14%	15.86%	114.82
▲ IPC (México)	44,202.52	0.32%	0.13%	-3.68%	0.31%	282.68
▲ S&P MILA 40	550.41	1.62%	3.92%	-0.21%	2.95%	5,640.19

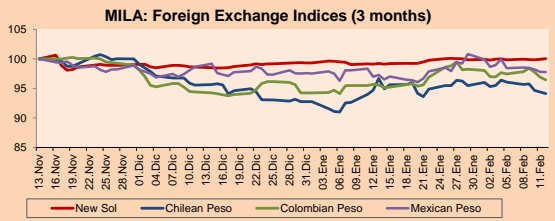
\*Legend: Variation 1D: 1 day; 5D: 5 days; 1M: 1 Month; YTD: Var% 12/31/20 to date



Source: Bloomberg

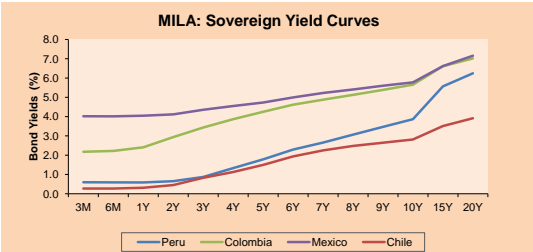
Currency	Price	1D*	5D*	30 D*	YTD*
▲ New Sol (PEN)	3,6445	0.12%	0.18%	0.84%	0.73%
▲ Chilean Peso (CLP)	722.16	-0.30%	-2.02%	-2.63%	1.46%
▼ Colombian Peso (COP)	3,510.12	-0.50%	-1.05%	0.90%	2.34%
▼ Mexican Peso (MXN)	19.95	-0.06%	-0.67%	0.50%	0.19%

\*Legend: Variation 1D: 1 day; 5D: 5 days; 1M: 1 Month; YTD: Var% 12/31/20 to date



Base: 13/11/20=100  
Source: Bloomberg

Fixed Income	Currency	Price	Bid Yield (%)	Ask Yield (%)	Duration
PERU 7.35 07/21/25	USD	127.041	1.13	1.03	3.90
PERU 4.125 08/25/27	USD	116.013	1.57	1.50	5.75
PERU 8.75 11/21/33	USD	165.664	2.69	2.61	8.97
PERU 6.55 03/14/37	USD	146.756	2.91	2.87	10.65
PERU 5.625 11/18/2050	USD	147.777	3.16	3.12	17.31
CHILE 2.25 10/30/22	USD	103.415	0.38	0.10	1.66
CHILE 3.125 01/21/26	USD	110.73	0.94	0.85	4.61
CHILE 3.625 10/30/42	USD	111.685	2.92	2.88	15.71
COLOM 11.85 03/09/28	USD	162.477	2.35	2.12	5.26
COLOM 10.375 01/28/33	USD	163.08	3.88	3.66	8.10
COLOM 7.375 08/18/37	USD	140.438	4.05	3.97	10.66
COLOM 6.125 01/18/41	USD	128.136	4.08	4.02	12.74
MEX 4 10/02/23	USD	128.136	4.084	4.021	12.74
MEX5.55 01/45	USD	125.091	3.95	3.90	14.62



Source: Bloomberg

## Equity

Largest gains	Exchange	Currency	Price	▲ %
SOQUIMICH-B	Chile	CLP	41000.00	5.11
BUENAVENTURA-ADR	Peru	USD	10.32	2.69
EMPRESAS COPEC	Chile	CLP	8648.00	2.48
CREDECORP LTD	Peru	USD	166.00	2.45
BOLSA MEXICANA	Mexico	MXN	46.50	2.22

Per Turnover	Exchange	Amount (US\$)
WALMART DE MEXIC	Mexico	28,558,388
AMERICA MOVIL-L	Mexico	21,222,337
GRUPO F BANORT-O	Mexico	21,081,328
GRUPO MEXICO-B	Mexico	18,774,355
CEMEX SAB-CPO	Mexico	15,109,354

Largest losses	Exchange	Currency	Price	▼ %
GRUPO TELEV-CPO	Mexico	MXN	33.95	-3.25
GRUPO MEXICO-B	Mexico	MXN	88.19	-1.98
CAP	Chile	CLP	9599	-1.85
GRUPO NUTRESA SA	Colombia	COP	24000	-1.56
CEMENTOS ARGOS	Colombia	COP	5865	-1.10

Per Volume	Exchange	Volume
ITAU CORPBANCA	Chile	1,865,138,683
BANCO SANTANDER	Chile	154,364,882
ENEL AMERICAS SA	Chile	64,201,236
COLBUN SA	Chile	49,244,864
BANCO DE CHILE	Chile	45,608,915

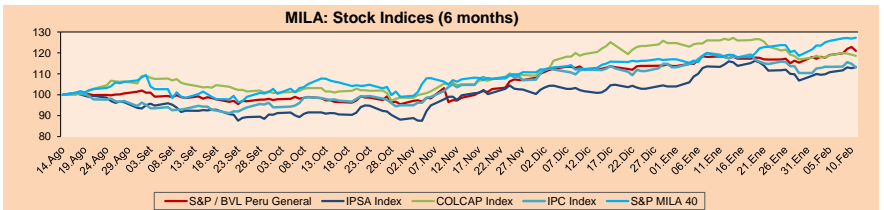
## MILA

Peru: The General Index of the BVL ended today's session with a negative result of +1.18%. The index maintains an annual accumulated positive trend of +7.64% in local currency, while the adjusted return in dollars amounts to +6.86%. Then, the S&P / BVL Peru SEL varied by +0.77% while the S&P / BVL LIMA 25 by +0.73%. The PEN spot reached \$ / 3,6445. Headline: Mexico City abandons total quarantine after drops in coronavirus infections

Chile: The IPSA index ended the day with a positive return of +1.12%. The sectors most benefited from the conference were Basic Materials (+3.54%) and Energy (+2.48%). The stocks with the best performance were Sociedad Química y Minera de Chile SA (+5.11%) and Empresas COPEC SA (+2.48%). Headline: Cox Energy to Build 308MW Solar Project in Chile for US \$ 170M

Colombia: The COLCAP index closed today with a negative return of -0.47%. The sectors most affected during the session were Non-Cyclical Consumption (-0.37%) and Finance (-0.29%). The worst performing stocks were Promigas SA ESP (-3.30%) and Grupo Nutresa SA (-1.56%). Headline: Colombia's economy would have plummeted 7% in 2020 despite the recovery in the fourth quarter

Mexico: The IPC index closed the day with a positive return of +0.32%. The sectors with the highest performance on the day were Healthcare (+5.33%) and Technology (+1.94%). The best performing stocks were Genomma Lab Internacional SAB de CV (+5.33%) and Bolsa Mexicana de Valores SAB de CV (+2.15%). Headline: Mexico City abandons total quarantine after drops in coronavirus infections

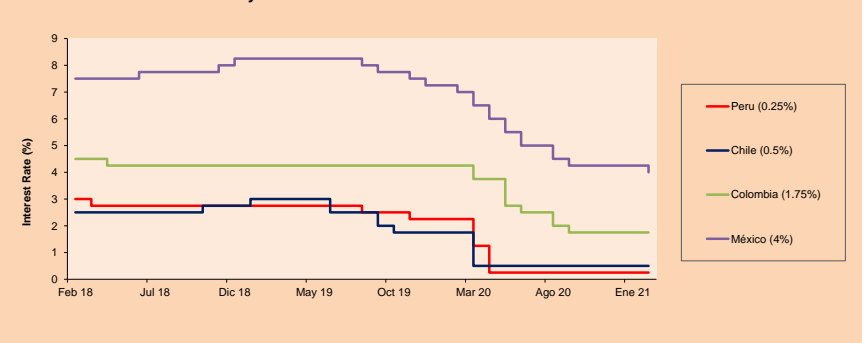


Base: 17/08/20=100  
Source: Bloomberg

## ETFs

ETFs	Curr.	Close	1D	5D	30 D	YTD	Exchange
▲ iShares MSCI All Peru Caped Index Fund	USD	37.66	1.18%	3.46%	5.52%	8.59%	NYSE Arca
▲ iShares MSCI All Chile Caped Index Fund	USD	32.42	1.19%	4.24%	0.81%	7.32%	Cboe BZX
▲ Global X MSCI Colombia	USD	10.61	1.00%	1.34%	-6.85%	-6.60%	NYSE Arca
▲ iShares MSCI Mexico Capped	USD	42.51	0.66%	0.97%	-3.65%	-1.12%	NYSE Arca
▲ iShares MSCI Emerging Markets	USD	57.8	0.09%	2.77%	6.85%	11.86%	NYSE Arca
▲ Vanguard FTSE Emerging Markets	USD	56.19	0.18%	3.10%	5.82%	12.13%	NYSE Arca
▲ iShares Core MSCI Emerging Markets	USD	69.27	0.14%	2.79%	5.92%	11.65%	NYSE Arca
▲ iShares JP Morgan Emerging Markets Bonds	USD	65.04	0.09%	2.15%	3.09%	6.48%	Cboe BZX
▲ Morgan Stanley Emerging Markets Domestic	USD	6.26	0.32%	1.62%	1.13%	-0.48%	New York

## MILA: Policy Rate



Source: Bloomberg

Capital Market Laboratory Coordinator: Economist Bruno Bellido  
Collaboration: Piero Best, Maria Camarena, Alonso Stephen Hernández and Adrian Paredes  
email: pulsobursatil@ulima.edu.pe  
facebook: www.facebook.com/pulsobursatil.ul

The content of this document is just for informational purposes. The information and opinions expressed should not be considered as recommendations for future decisions. Under any circumstances, the Capital Market Laboratory of University of Lima will be responsible for the use of the statements in this document.

## WORLD

Main Indices	Close	1 D*	5 D*	1 M*	YTD*	Market Cap. (US\$ Mill.)
▲ Dow Jones (USA)	31,458.40	0.09%	1.00%	2.09%	2.78%	9,895,626
▲ Standard & Poor's 500 (EEUU)	3,934.83	0.47%	1.23%	4.42%	4.76%	34,759,603
▲ NASDAQ Composite (USA)	14,095.47	0.50%	1.73%	8.44%	9.37%	22,958,946
▲ Stoxx EUROPE 600 (Europe)	414.00	0.64%	1.09%	1.51%	3.75%	9,399,354
▲ DAX (Germany)	14,049.89	0.08%	-0.05%	1.90%	2.41%	1,053,204
▲ FTSE 100 (United Kingdom)	6,589.79	0.94%	1.55%	-2.17%	2.00%	1,379,232
▲ CAC 40 (France)	5,703.67	0.60%	0.78%	1.64%	2.74%	1,539,348
▲ IBEX 35 (Spain)	8,055.00	0.22%	-1.94%	-2.13%	-0.23%	438,203
▼ MSCI AC Asia Pacific Index	218.07	-0.08%	2.48%	4.53%	9.08%	27,652,675
▲ HANG SENG (Hong Kong)	30,173.57	0.43%	3.64%	6.71%	10.81%	4,692,789
▲ SHANGHAI SE Comp. (China)	3,655.09	1.43%	3.92%	3.50%	5.24%	6,332,718
▼ NIKKEI 225 (Japan)	29,520.07	-0.14%	-4.16%	3.51%	7.56%	4,087,364
▼ S&P / ASX 200 (Australia)	6,806.74	-0.63%	-0.49%	1.36%	3.33%	1,678,275
▼ KOSPI (South Korea)	3,100.58	0.32%	0.13%	-1.52%	7.90%	1,855,454

\*Legend: Variación 1D: 1 Day; 5D: 5 Days; 1M: 1 Month; YTD: Var.% 12/31/20 to date

## Equity

Germany (Stocks from DAX Index)

Largest gains	Curr.	Price	▲%	Exchange	Largest losses	Curr.	Price	▼%	Exchange
DBK GY	EUR	8.98	1.89	Xetra	CON GY	EUR	122.65	-1.05	Xetra
SIIE GY	EUR	134.02	1.32	Xetra	SAP GY	EUR	108.56	-0.86	Xetra
FRE GY	EUR	36.15	1.26	Xetra	DAI GY	EUR	64.66	-0.60	Xetra
MRK GY	EUR	143	1.20	Xetra	1COV GY	EUR	58.58	-0.58	Xetra

Europe (Stocks from STOXX EUROPE 600)

Largest gains	Curr.	Price	▲%	Exchange	Largest losses	Curr.	Price	▼%	Exchange
INGA NA	EUR	8.349	6.71	EN Amsterdam	EDPR PL	EUR	20.4	-7.48	EN Lisbon
PSM GY	EUR	17.605	6.37	Xetra	SCATCO NO	NOK	287.6	-6.74	Oslo
RXL FP	EUR	15.155	6.13	EN Paris	TEMN SE	CHF	104.95	-3.54	SIX Swiss Ex
DSV DC	DKK	1121	5.46	Copenhagen	RUI FP	EUR	38.3	-3.53	EN Paris

## Global Overview:

### United States:

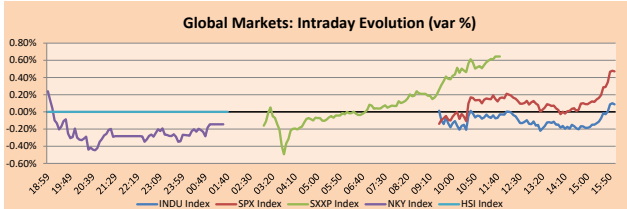
US markets ended the day on positive territory, as investors shifted toward energy, finance and materials stocks in anticipation of Joe Biden's relief plan. The S&P 500 and NASDAQ indices hit new highs this week, as market participants sold growth-oriented stocks and bought undervalued value and cyclical stocks. These stocks, which include the energy, finance and materials sectors, won on expectations that they would benefit from a reopened economy, according to Reuters. Thomas Hayes of hedge fund Great Hill Capital LLC said that "we continue this rotation that would be consistent with the new business cycle and as (bond) yields rise, value and cyclical will lead." On the other hand, the TIX volatility index ended at levels below 20 for the first time since February last year. These movements follow a significant drop in confirmed cases of coronavirus and hospitalizations. Thus, the S&P 500 +0.47%, DJIA +0.09% and NASDAQ +0.5% finished with gains.

### Europe:

European markets ended today's session with positive returns due to recent economic data, monitored by investors, and the increasing pace of the vaccination process. At the open, European stocks reported losses as investors awaited further signs of progress from the U.S. stimulus. However, a rebound in some stocks reversed the day's results, with the Stoxx 600 reaching a three-week high. In London, the stock market posted positive results despite today's news that the island's GDP slumped by 9.9% in 2020. The positive results are explained by the growth observed in the last three months and the rebound in health stocks, such as AstraZenca +3.11%. In stock market shares, Reuters highlights ASML Holding +2.98%, following statements of increased demand for chips. Similarly, L'Oréal +0.01% after forecasting a strong rebound in sales and ING Group +6.71%, after reporting better-than-expected quarterly earnings. On the other hand, Volkswagen -1.92% closed lower after announcing that deliveries fell during January. By today's close, the main indices Stoxx 600 +0.64%, FTSE 100 +0.94%, CAC 40 -0.60% and DAX +0.06% closed mostly higher.

### Asia:

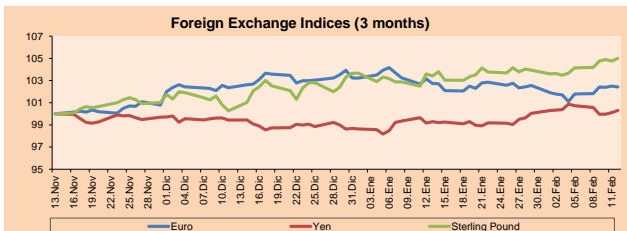
Major Asian markets ended the session with negative returns as major Asian markets are closed for the Lunar New Year vacation. While major indexes in China, Hong Kong, South Korea and Singapore remain closed, stocks in Australia and Japan struggled to post gains. In Japan, the Nikkei index snapped a four-session rally. Shipping stocks were the day's biggest losers, with Nippon Yusen -4.70%, Kawasaki Kisen -4.45% and Mitsui OSK Lines -4.67% closing lower. On the other hand, Toyota Motor +3.48%, after they announced that it has up to four months of chip stocks, and that it did not expect the global shortage to affect production. This allowed the automaker to raise its earnings forecast 54% higher than expected for the year. Meanwhile, recent reports indicated that Japanese stocks received their highest weekly foreign inflows in the week ending February 5. In Australia, the index closed lower, dragged down by gold and energy stocks. This is because the price of underlying commodities fell recently. Thus Nikkei -0.14% and S&P/ASX 200 -0.63% closed lower, while the rest of the indices are maintained at Hang Seng +0.45%, CSI 300 +2.14%, Shanghai Comp +1.43%, Kospi +0.52%.



Source: Bloomberg

Currency	Price	1 D*	5 D*	1 M*	YTD*
▼ Euro	1.2120	-0.08%	0.61%	-0.30%	-0.79%
▲ Yen	104.9400	0.18%	-0.43%	1.01%	1.64%
▲ Sterling Pound	1.3849	0.24%	0.83%	1.54%	1.31%
- Yuan	6.4583	0.00%	-0.11%	-0.15%	-1.06%
▼ Hong Kong Dollar	7.7528	0.00%	0.00%	-0.01%	0.00%
▼ Brazilian Real	5.3776	-0.14%	0.02%	1.31%	3.45%
▲ Argentine Peso	88.5327	0.09%	0.60%	3.48%	5.21%

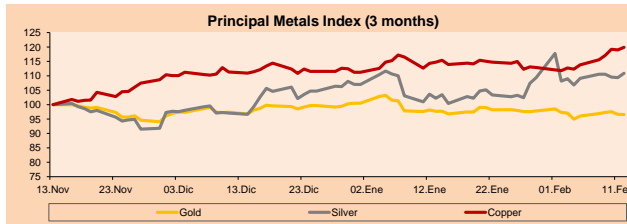
\*Legend: Variación 1D: 1 Día; 5D: 5 Days; 1M: 1 Month; YTD: Var.% 12/31/20 to date



Base: 13/11/20=100  
Source: Bloomberg

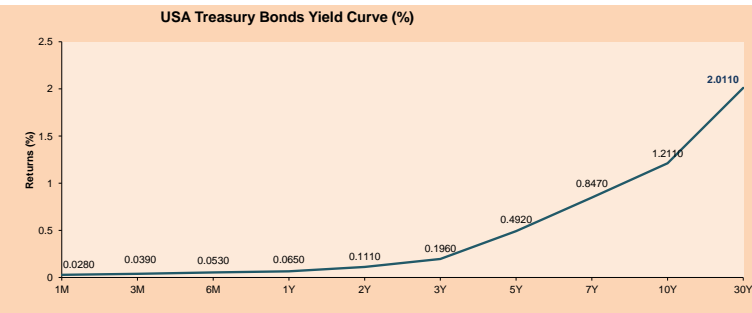
Commodities	Close	1 D*	5 D*	1 M*	YTD*
▼ Oro (US\$ Oz. T) (LME)	1,824.23	-0.07%	0.56%	-1.15%	-3.90%
▲ Plata (US\$ Oz. T) (LME)	27.36	1.40%	1.63%	8.47%	3.63%
▲ Cobre (US\$ TM) (LME)	8,352.25	0.76%	5.36%	4.47%	7.78%
▲ Zinc (US\$ TM) (LME)	2,821.75	1.82%	6.60%	2.59%	3.39%
▲ Petróleo WTI (US\$ Barril) (NYM)	59.47	2.11%	4.61%	12.29%	22.29%
▲ Estano (US\$ TM) (LME)	25,345.00	0.78%	6.12%	18.88%	23.37%
▲ Plomo (US\$ TM) (LME)	2,116.00	0.88%	3.58%	3.78%	6.84%
▼ Azúcar #11 (US\$ Libra) (NYB-ICE)	15.64	-0.95%	-0.38%	-4.62%	6.54%
▼ Cacao (US\$ TM) (NYB-ICE)	2,433.00	-0.16%	-1.58%	-0.98%	-4.02%
- Café Arábica (US\$ TM) (NYB-ICE)	123.05	0.00%	-2.84%	-3.30%	-5.46%

\*Legend: Variación 1D: 1 Día; 5D: 5 Days; 1M: 1 Mes; YTD: Var.% 31/12/20 a la fecha



Base: 13/11/20=100  
Source: Bloomberg

ETFs	Curr.	Close	1D	5D	30 D	YTD	Exchange
SPDR S&P 500 ETF TRUST	USD	392.64	0.49%	1.27%	3.38%	5.02%	NYSE Arca
ISHARES MSCI EMERGING MARKET	USD	57.80	0.09%	2.77%	5.82%	11.86%	NYSE Arca
ISHARES IBOXX HIGH YLD CORP	USD	87.78	0.16%	0.30%	0.58%	0.55%	NYSE Arca
FINANCIAL SELECT SECTOR SPDR	USD	31.52	1.03%	2.04%	0.64%	6.92%	NYSE Arca
VANECK GOLD MINERS	USD	34.78	-0.09%	0.49%	-2.41%	-3.44%	NYSE Arca
ISHARES RUSSELL 2000 ETF	USD	227.25	0.29%	2.53%	8.35%	15.91%	NYSE Arca
SPDR GOLD SHARES	USD	170.69	-0.30%	0.52%	-1.55%	-4.30%	NYSE Arca
ISHARES 20+ YEAR TREASURY BO	USD	147.11	-1.24%	-0.62%	-3.63%	-6.73%	NASDAQ GM
INVESCO QQQ TRUST SERIES 1	USD	336.45	0.56%	1.54%	6.46%	7.24%	NASDAQ GM
ISHARES NASDAQ BIOTECHNOLOGY	USD	170.72	0.58%	0.99%	8.03%	12.69%	NASDAQ GM
ENERGY SELECT SECTOR SPDR	USD	44.67	1.48%	4.96%	3.40%	17.86%	NYSE Arca
PROSHARES ULTRA VIX ST FLUTUR	USD	9.42	-0.94%	-6.27%	-8.72%	-11.55%	Cboe BZX
UNITED STATES OIL FUND LP	USD	39.94	2.49%	4.58%	11.56%	20.99%	NYSE Arca
ISHARES MSCI BRAZIL ETF	USD	36.03	0.19%	-0.55%	-3.46%	-2.81%	NYSE Arca
SPDR S&P OIL & GAS EXP & PR	USD	75.63	2.88%	8.03%	9.07%	29.28%	NYSE Arca
UTILITIES SELECT SECTOR SPDR	USD	62.62	-0.73%	-1.53%	0.00%	-0.13%	NYSE Arca
ISHARES US REAL ESTATE ETF	USD	89.54	0.13%	1.47%	7.52%	4.54%	NYSE Arca
SPDR S&P BIOTECH ETF	USD	164.32	-0.91%	-1.47%	10.60%	16.72%	NYSE Arca
ISHARES IBOXX INVESTMENT GRA	USD	134.68	-0.33%	-0.08%	-1.35%	-2.50%	NYSE Arca
ISHARES JIP MORGAN USD EMERGI	USD	113.48	-0.55%	-0.65%	-0.13%	-2.10%	NASDAQ GM
REAL ESTATE SELECT SECT SPDR	USD	38.37	-0.03%	1.13%	7.87%	4.95%	NYSE Arca
ISHARES CHINA LARGE-CAP ETF	USD	53.58	-0.09%	3.66%	10.63%	15.40%	NYSE Arca
CONSUMER STAPLES SPDR	USD	65.69	0.15%	-0.11%	-0.79%	-2.61%	NYSE Arca
VANECK JR GOLD MINERS	USD	50.25	0.30%	-0.24%	-3.16%	-7.36%	NYSE Arca
SPDR BBG BARG HIGH YIELD BND	USD	109.64	0.18%	0.35%	0.69%	0.64%	NYSE Arca
VANGUARD REAL ESTATE ETF	USD	89.59	0.02%	1.68%	7.73%	5.49%	NYSE Arca
GRAYSCALE BITCOIN TRUST BTC	USD	48.91	1.90%	29.12%	21.21%	52.84%	OTC US



Source: Bloomberg

Capital Market Laboratory Coordinator: Economist Bruno Bellido  
Collaboration: Piero Best, Maria Camarena, Alonso Stephen Hernández and Adrian Paredes  
email: pulso@pulsobursatil@ulima.edu.pe  
facebook: www.facebook.com/pulsobursatil.ulima

LIMA

Stocks

Ticker	Currency	Price	1D*	5D*	30D*	YTD*	Frequency	Volume (US\$)	Beta	Dividend Yield (%)	Price Earning	Market Cap. (M US\$)	Economic Sector*	Index Weight
▲ ALICORC1 PE**	S/.	8.27	0.87%	0.72%	0.41%	1.98%	100.00%	2,315	0.71	3.02	19.02	1,934.59	Industrial	3.53%
▼ ATACOB1 PE**	S/.	0.17	-2.94%	3.13%	12.24%	19.57%	95.00%	36,130	1.09	0.00	-	42.77	Mining	1.02%
▲ BACKUS1 PE**	S/.	24.20	1.04%	6.61%	5.22%	20.10%	90.00%	30,761	0.53	1.45	10.95	8,880.98	Industrial	0.82%
▲ BAP PE**	US\$	166.00	2.45%	5.06%	4.40%	3.36%	100.00%	2,222,130	1.65	5.30	-	15,667.46	Diverse	5.82%
▲ BVN PE**	US\$	10.32	2.69%	-1.24%	-7.69%	-14.00%	100.00%	331,915	1.24	0.00	-	2,844.55	Mining	5.88%
▲ CASAGRC1 PE**	S/.	6.20	1.81%	4.20%	10.71%	30.53%	75.00%	19,683	0.68	3.64	11.13	143.30	Agricultural	1.31%
- BBVAC1 PE**	S/.	2.50	0.00%	2.88%	7.30%	15.21%	100.00%	259,825	0.73	3.45	18.03	4,478.78	Finance	2.85%
- CORARE1 PE**	S/.	1.16	0.00%	11.54%	34.88%	30.34%	100.00%	38,305	0.61	6.02	6.92	412.85	Industrial	1.72%
▼ CPACASC1 PE**	S/.	6.12	-0.81%	1.66%	7.18%	15.47%	100.00%	237,329	0.57	3.76	19.74	779.42	Industrial	2.38%
- CVERDEC1 PE**	US\$	24.00	0.00%	6.67%	9.09%	14.72%	100.00%	471,142	0.82	0.00	39.01	8,401.34	Mining	5.25%
- ENGEPEC1 PE**	S/.	2.44	0.41%	4.72%	15.09%	22.00%	85.00%	16,290	0.48	9.01	12.26	1,900.55	Public Services	1.44%
- ENDISPC1**	S/.	6.25	0.00%	3.31%	13.64%	15.74%	90.00%	3,361	0.48	0.00	11.79	1,095.08	Public Services	0.98%
▼ FERREYC1 PE**	S/.	2.01	-0.50%	-0.50%	5.79%	15.52%	100.00%	349,740	0.61	3.81	27.13	538.10	Diverse	4.90%
▲ AENZAC1 PE**	S/.	1.73	0.58%	-2.26%	0.58%	-0.57%	95.00%	311,629	0.83	0.00	-	413.89	Diverse	4.05%
▲ IFS PE**	US\$	32.40	-0.31%	1.25%	-4.99%	4.72%	100.00%	643,522	1.32	5.40	35.57	3,740.51	Diverse	7.22%
▼ INRETC1 PE**	US\$	43.00	-0.69%	0.47%	-2.93%	9.69%	100.00%	600,710	0.61	1.31	35.13	4,420.71	Diverse	5.28%
- LUSURC1 PE**	S/.	28.00	0.00%	0.00%	8.11%	9.80%	95.00%	380,683	0.56	2.49	27.48	3,741.15	Public Services	1.81%
- MINSUR1 PE**	S/.	2.50	2.04%	11.11%	26.26%	35.14%	95.00%	40,727	0.75	0.00	-	1,977.64	Mining	3.09%
▲ PML PE**	US\$	0.15	-2.67%	14.96%	0.69%	37.74%	55.00%	47,166	1.46	0.00	-	38.57	Mining	2.12%
▲ RELAPAC1 PE**	S/.	0.09	9.88%	18.67%	25.35%	28.99%	100.00%	84,324	0.53	0.00	-	203.16	Industrial	2.12%
▲ SCCO PE**	US\$	71.70	1.56%	0.17%	2.40%	8.80%	80.00%	23,272	0.74	2.37	33.33	55,429.35	Mining	2.14%
▼ SIDERC1 PE**	S/.	0.98	-2.00%	3.16%	16.67%	15.29%	100.00%	13,557	0.84	34.92	11.65	330.19	Industrial	1.43%
▲ TV PE**	US\$	0.18	3.49%	11.25%	-3.26%	21.09%	100.00%	54,101	1.50	0.00	-	176.06	Mining	2.93%
- UNACEMC1 PE**	S/.	1.84	1.10%	5.75%	11.52%	18.71%	100.00%	142,355	0.81	0.71	50.60	917.92	Industrial	3.00%
- VOLCABC1 PE**	S/.	0.80	0.00%	11.11%	45.45%	53.85%	100.00%	442,145	0.94	0.00	-	2,015.31	Mining	5.90%
▼ NEXAPEC1 PE**	S/.	4.05	-1.22%	17.05%	32.79%	43.11%	80.00%	22,583	1.03	0.00	-	1,467.93	Mining	1.56%

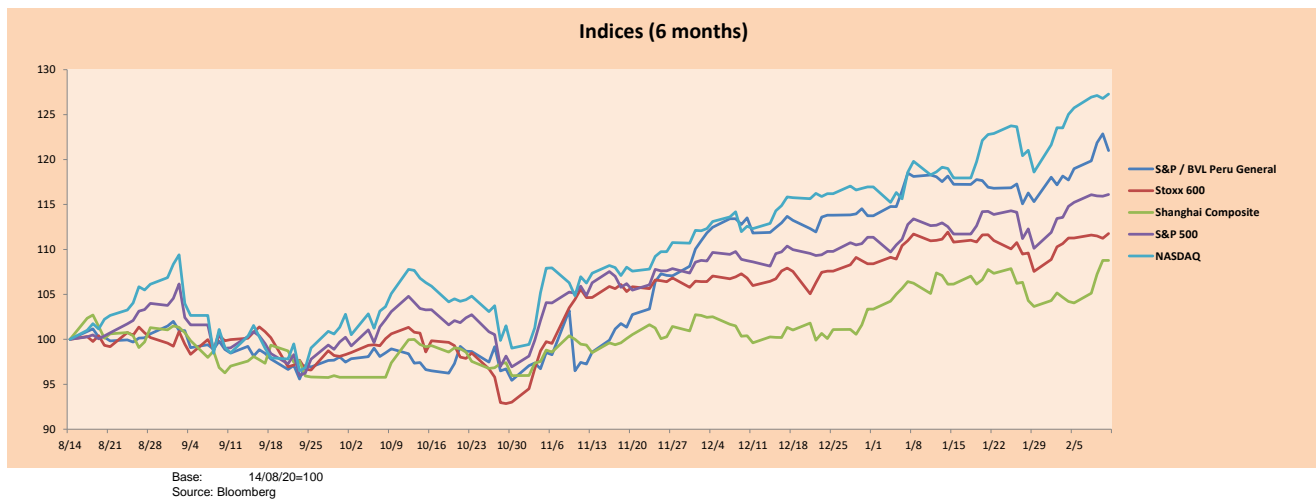
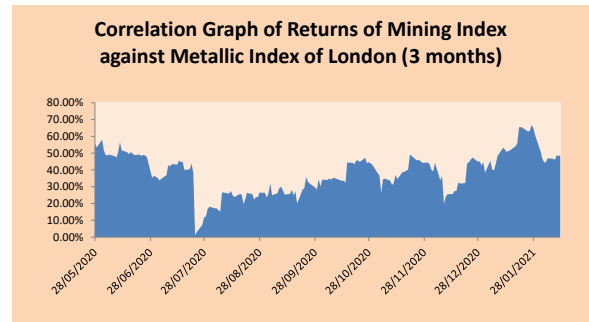
Quantity of shares: 26  
 Source: Bloomberg, Economática  
 \* Bloomberg Industry Classification System  
 \*\* PER is used in the stock market and original currency of the instrument  
 \*Legend: Variation 1D: 1 Day; 5D: 5 Days; 1M: 1 Month; YTD: Var.% 12/31/20 to date

Sectorial Indices

	Close	1D*	5D*	30D*	YTD*	Beta
▲ S&P/BVLMining	417.73	1.71%	2.25%	4.29%	7.12%	0.81
▼ S&P/BVLConsumer	1,243.01	-0.07%	1.28%	0.36%	14.18%	0.41
▲ S&P/BVLIndustrials	215.89	0.11%	1.76%	7.62%	13.29%	0.53
▲ S&P/BVLFinancials	1,080.64	2.19%	4.78%	4.41%	4.52%	1.77
▲ S&P/BVLConstruction	234.75	0.25%	2.52%	8.19%	12.26%	0.55
▲ S&P/BVLPublicSvcs	685.10	0.08%	1.74%	8.52%	11.56%	0.17
▲ S&P/BVLElectricUtil	668.83	0.08%	1.74%	8.52%	11.56%	0.17

S&P/BVLConstructionTRPEN

\*Legend: Variation 1D: 1 Day; 5D: 5 Days; 1M: 1 Month; YTD: Var.% 12/31/20 to date



Capital Market Laboratory Coordinator: Economist Bruno Bellido  
 Collaboration: Piero Best, Maria Camarena, Alonso Stephen Hernández and Adrian Paredes  
 email: pulsohorsatil@ulima.edu.pe  
 facebook: www.facebook.com/pulsohorsatil.ul

The content of this document is just for informational purposes. The information and opinions expressed should not be consider as recommendations for future decisions. Under any circumstances, the Capital Market Laboratory of University of Lima will be responsible for the use of the statements in this document.

## SOVEREIGN RATING

### RISK RATINGS

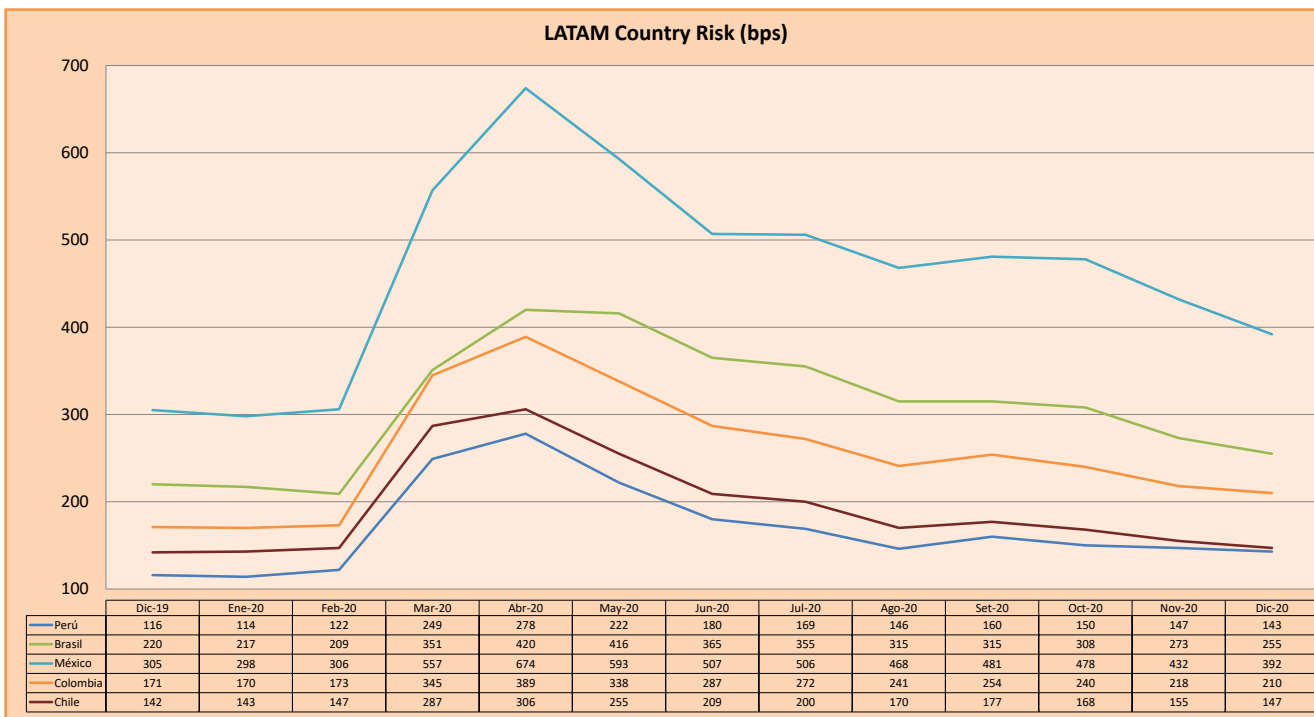
Moody's	S&P	Fitch	
Aaa	AAA	AAA	Prime
Aa1	AA+	AA+	High credit quality
Aa2	AA	AA	
Aa3	AA-	AA-	
A1	A+	A+	Medium-high grade, with low credit risk
A2	A	A	
A3	A-	A-	
Baa1	BBB+	BBB+	Moderate Credit Risk
Baa2	BBB	BBB	
Baa3	BBB-	BBB-	
Ba1	BB+	BB+	It has speculative elements and it is subject to substantial credit risk
Ba2	BB	BB	
Ba3	BB-	BB-	
B1	B+	B+	It is considered speculative and it has high credit risk
B2	B	B	
B3	B-	B-	
Caa1	CCC+		Bad credit conditions and it is subject to high credit risk
Caa2	CCC		
Caa3	CCC-	CCC	
Ca	C		Very close to default or in default
		DDD	
C	D	DD D	

Source: Bloomberg

Latin America Credit Rating			
Clasificadora de riesgo			
Country	Moody's	Fitch	S&P
Peru	A3	BBB+	BBB+
México	Ba2	BB-	BB-
Venezuela	C	WD	SD
Brazil	Ba2	BB-	BB-
Colombia	Baa2	BBB-	BBB-
Chile	A1	A-	A+
Argentina	Ca	WD	CCC+
Panama	Baa1	BBB-	BBB

Source: Bloomberg

### LATAM Country Risk (bps)



Source: BCRP

Capital Market Laboratory Coordinator: Economist Bruno Bellido  
Collaboration: Piero Best, Maria Camarena, Alonso Stephen Hernández and Adrian Paredes  
email: [pulsobursatil@ulima.edu.pe](mailto:pulsobursatil@ulima.edu.pe)  
facebook: [www.facebook.com/pulsobursatil.ul](https://www.facebook.com/pulsobursatil.ul)