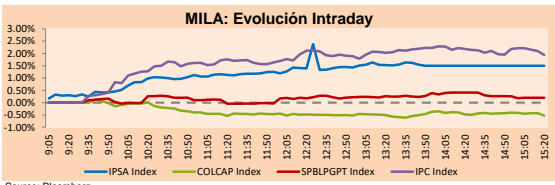


## MILA

Lima, March 2, 2021

Main Indexes	Close	1 D	5 D	1 M	YTD	Cap. Burs. (US\$ bill)
▲ IPSA (Chile)	4,720.09	1.78%	5.14%	6.86%	13.00%	124.73
▲ IGPA (Chile)	23,806.74	1.72%	4.83%	6.69%	13.33%	157.16
▲ COLSIC (Colombia)	1,056.69	0.00%	-1.17%	-1.87%	-0.22%	5.75
▼ COLCAP (Colombia)	1,350.04	-0.42%	-0.38%	-1.33%	-6.11%	79.26
▲ S&P/BVL (Perú)*	22,871.62	0.27%	-1.33%	6.62%	9.84%	119.72
▲ S&P/BVL SEL (Perú)	605.79	0.28%	-1.21%	4.46%	9.86%	96.80
▲ S&P/BVL LIMA 25	29,766.88	0.04%	-0.72%	6.62%	18.13%	118.71
▲ IPC (México)	45,682.19	2.00%	0.91%	4.18%	3.67%	276.36
▲ S&P MILA 40	550.68	0.41%	-0.30%	4.49%	3.00%	5,694.68

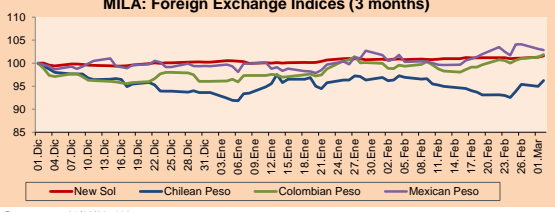
\*Legend: Variation 1D: 1 day; 5D: 5 days; 1M: 1 Month; YTD: Var% 12/31/20 to date



Source: Bloomberg

Currency	Price	1D*	5D*	30 D*	YTD*
▲ New Sol (PEN)	3.6662	0.27%	0.38%	0.80%	1.33%
▲ Chilean Peso (CLP)	731.61	1.31%	3.47%	-0.12%	2.79%
▲ Colombian Peso (COP)	3,637.01	0.55%	1.28%	1.71%	6.04%
▼ Mexican Peso (MXN)	20.61	-0.25%	0.36%	0.16%	3.47%

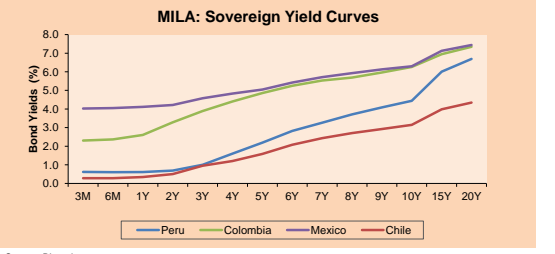
\*Legend: Variation 1D: 1 day; 5D: 5 days; 1M: 1 Month; YTD: Var% 12/31/20 to date



Base: 01/12/20=100

Source: Bloomberg

Fixed Income	Currency	Price	Bid Yield (%)	Ask Yield (%)	Duration
PERU 7.35 07/21/25	USD	125.303	1.43	1.33	3.86
PERU 4.125 08/25/27	USD	113.309	1.97	1.89	5.81
PERU 8.75 11/21/33	USD	157.605	3.24	3.16	8.81
PERU 6.55 03/14/37	USD	138.776	3.42	3.37	10.45
PERU 5.625 11/18/2050	USD	136.966	3.62	3.56	16.76
CHILE 2.25 10/30/22	USD	102.334	0.59	0.35	1.62
CHILE 3.125 01/21/26	USD	108.917	1.29	1.19	4.57
CHILE 3.625 10/30/42	USD	105.835	3.26	3.23	15.45
COLOM 11.85 03/09/28	USD	158.732	2.74	2.51	5.20
COLOM 10.375 01/28/33	USD	158.816	4.21	3.97	8.01
COLOM 7.375 09/18/37	USD	134.613	4.45	4.36	10.47
COLOM 6.125 01/18/41	USD	121.677	4.50	4.43	12.48
MEX 4 10/02/23	USD	121.677	4.501	4.434	12.48
MEX5.55 01/45	USD	118.707	4.31	4.27	14.28



Source: Bloomberg

Equity	Exchange	Currency	Price	▲ %
Largest gains				
GRUPO MEXICO-B	Mexico	MXN	105.77	6.42
CENCOSUD SA	Chile	CLP	1455.00	3.93
BANCO CRED INVER	Chile	CLP	33598.00	3.70
BECLC SAB DE CV	Mexico	MXN	44.74	3.66
GRUPO AEROPORTUA	Mexico	MXN	130.99	3.61

Per Turnover	Exchange	Amount (US\$)
GRUPO MEXICO-B	Mexico	43,162,904
AMERICA MOVIL-L	Mexico	30,295,977
WALMART DE MEXIC	Mexico	28,040,610
CEMEX SAB-CPO	Mexico	26,461,963
GRUPO F BANORT-O	Mexico	24,241,435

Largest losses	Exchange	Currency	Price	▼ %
ITAU CORPBANCA	Chile	CLP	2.525	-1.94
INRETAIL PERU CO	Peru	USD	44.3	-1.56
GRUPO AVAL SA-PF	Colombia	COP	1162	-1.19
BANCOLOMBIA-PREF	Colombia	COP	30800	-1.12
PARQUE ARAUCO	Chile	CLP	1330	-1.12

Per Volume	Exchange	Volume
ITAU CORPBANCA	Chile	648,575,793
BANCO SANTANDER	Chile	287,931,808
ENEL AMERICAS SA	Chile	156,063,285
ENEL CHILE SA	Chile	109,633,248
BANCO DE CHILE	Chile	97,969,089

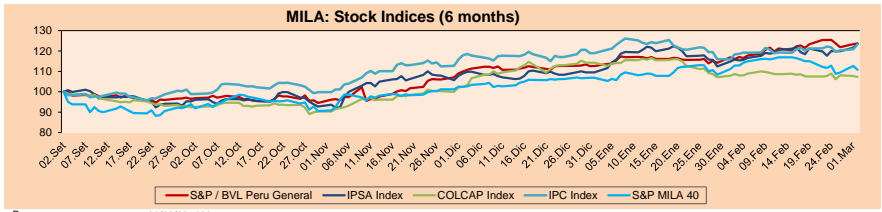
## MILA

Peru: The General Index of the BVL ended today's session with a positive result of + 0.27%. The index maintains an annual accumulated positive trend of + 9.84% in local currency, while the adjusted return in dollars amounts to + 8.40%. Then, the S&P / BVL Peru SEL changed by + 0.28% while the S&P / BVL LIMA 25 by + 0.04%. The PEN spot reached \$ 3.6662. Headline: Mining investment in Peru will grow 12% this year and will add US \$ 4,800M, Scotiabank projects

Chile: The IPSA index ended the day with a positive return of + 1.78%. The sectors that benefited the most during the session were Industrial (+ 4.84%) and Materials (+ 2.57%). The best performing stocks were Compañía Sud Americana de Vapo (+ 4.84%) and Cencosud SA (+ 3.93%). Headline: Government of Chile seeks to divide the election of constituents into two days due to the pandemic

Colombia: The COLCAP index closed today with a negative return of -0.42%. The sectors most affected during the session were First Needs Products (-0.72%) and Finance (-0.70%). The worst performing stocks were Grupo Aval Activos y Valores (-1.19%) and BanColombia SA (-1.12%). Headline: Colombia's current account deficit falls in 2020 and foreign direct investment plummets 46.3%

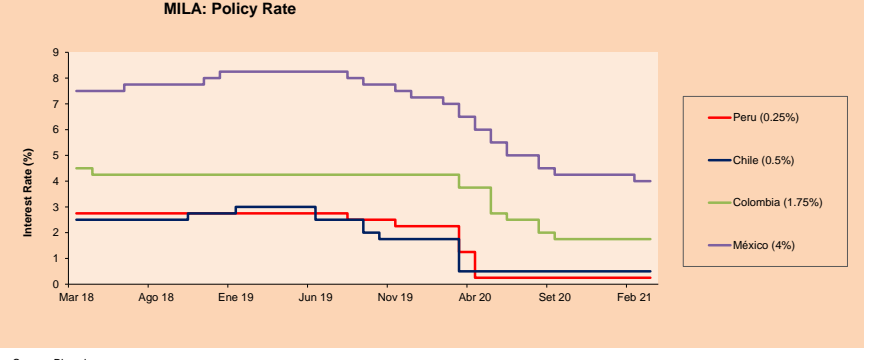
Mexico: The IPC index closed the day with a positive return of + 2.00%. The sectors that benefited the most during the session were Materials (+ 4.18%) and Public Services (+ 1.93%). The best performing stocks were Grupo México SAB de CV (+ 6.42%) and Beclé SAB de CV (+ 3.66%). Headline: Acciona agrees with Santander to offset 145,000 tons of CO2 with a wind farm in Mexico



Base:

Source: Bloomberg

ETFs	Curr.	Close	1D	5D	30 D	YTD	Exchange
▲ iShares MSCI All Peru Caped Index Fund	USD	37.38	0.40%	-4.08%	8.92%	7.79%	NYSE Arca
▲ iShares MSCI All Chile Caped Index Fund	USD	32.49	0.15%	-0.43%	8.55%	7.55%	Cboe BZX
▼ Global X MSCI Colombia	USD	10.1946	-0.36%	-1.64%	-1.41%	-10.26%	NYSE Arca
▲ iShares MSCI Mexico Capped	USD	42.2	1.76%	0.69%	5.00%	-1.84%	NYSE Arca
▲ iShares MSCI Emerging Markets	USD	54.63	-0.98%	-2.60%	2.48%	5.73%	NYSE Arca
▼ Vanguard FTSE Emerging Markets	USD	53.42	-0.95%	-2.48%	3.37%	6.61%	NYSE Arca
▼ iShares Core MSCI Emergina Markets	USD	65.78	-0.99%	-2.43%	3.05%	6.03%	NYSE Arca
▼ iShares JP Morgan Emergina Markets Bonds	USD	63.07	-0.50%	-1.44%	2.25%	3.26%	Cboe BZX
▲ Morgan Stanley Emerging Markets Domestic	USD	6.07	0.66%	-0.65%	-0.65%	-3.50%	New York



Source: Bloomberg

# PULSO BURSÁTIL

FACULTAD DE CIENCIAS EMPRESARIALES Y ECONÓMICAS  
CARRERA DE ECONOMÍA  
LABORATORIO DE MERCADO DE CAPITALES



## WORLD

Main Indices	Close	1 D*	5 D*	1 M*	YTD*	Market Cap. (US\$ Mill.)
▼ Dow Jones (USA)	31,391.52	-0.46%	-0.46%	2.29%	2.56%	9,697,855
▼ Standard & Poor's 500 (EEUU)	3,870.29	-0.81%	-0.29%	1.15%	3.04%	34,447,268
▼ NASDAQ Composite (USA)	13,358.79	-1.89%	-0.79%	-1.87%	3.65%	22,145,779
▲ Stoxx EUROPE 600 (Europe)	413.23	0.19%	0.46%	1.46%	3.56%	9,983,265
▲ DAX (Germany)	14,039.80	0.19%	1.26%	0.76%	2.34%	1,052,297
▲ FTSE 100 (United Kingdom)	6,613.75	0.38%	-0.18%	1.63%	2.37%	1,373,934
▲ CAC 40 (France)	5,809.73	0.29%	0.52%	4.43%	4.65%	1,567,230
▼ IBEX 35 (Spain)	8,355.80	-0.27%	1.26%	4.28%	3.49%	455,086
▼ MSCI AC Asia Pacific Index	209.49	-0.39%	-3.31%	-1.30%	4.79%	26,770,836
▼ HANG SENG (Hong Kong)	29,095.86	-1.21%	-5.02%	-0.72%	6.85%	4,423,957
▼ SHANGHAI SE Comp. (China)	3,508.59	-1.21%	-3.51%	-0.25%	1.02%	6,681,151
▼ NIKKEI 225 (Japan)	29,402.17	-0.86%	-2.48%	2.30%	7.41%	3,998,694
▼ S&P / ASX 200 (Australia)	6,762.27	-0.40%	-1.12%	-0.32%	3.28%	1,677,719
▲ KOSPI (South Korea)	3,043.87	2.00%	0.91%	-2.42%	6.29%	1,796,414

\*Legend: Variation 1D: 1 Day; 5D: 5 Days; 1M: 1 Month; YTD: Var. % 12/31/20 to date

## Equity

Germany (Stocks from DAX Index)

Largest gains	Curr.	Price	▲ %	Exchange	Largest losses	Curr.	Price	▼ %	Exchange
MUV2 GY	EUR	250.5	2.08	Xetra	DHER GY	EUR	105.95	-2.26	Xetra
ALV GY	EUR	206.8	1.87	Xetra	IFX GY	EUR	35.085	-1.82	Xetra
TCOV GY	EUR	82.48	1.73	Xetra	ADS GY	EUR	290.2	-1.36	Xetra
BAS GY	EUR	70.27	1.71	Xetra	CON GY	EUR	117	-1.18	Xetra

Europe (Stocks from STOXX EUROPE 600)

Largest gains	Curr.	Price	▲ %	Exchange	Largest losses	Curr.	Price	▼ %	Exchange
ALE PW	PLN	66.76	5.85	Warsaw	GNS LN	GBo	4964	-4.63	Londres
ROR LN	GBo	373	4.31	Londres	AMS SE	CHF	20.08	-4.47	SIX Swiss Ex
TMV GY	EUR	46.7	4.19	Xetra	EDEN FP	EUR	45.32	-4.37	EN Paris
KYG ID	EUR	106.7	4.10	EN Dublin	ATL IM	EUR	15.52	-3.69	Borsa Italiana

## Global Overview:

### United States:

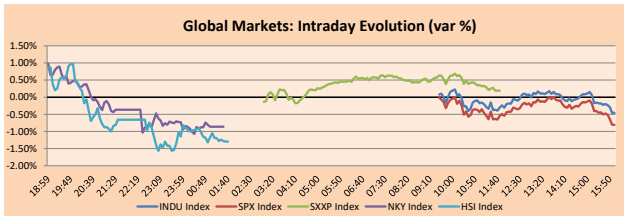
US markets closed trading with losses, amid another market rotation that pushed big tech down and as market players await fiscal stimulus. After recovering in the last session, tech stocks contracted as investors turned again toward stocks that would benefit from the economic reopening. As a result, the S&P 500 tech sector was down 1.6%. On the other hand, the materials and basic consumption sectors closed positive. Regarding this drop in technology, Tom Hainlin of US Bank Wealth Management commented that "in part it is simply because technology went up so much last year, and if interest rates go up, the value of your future cash flows decreases". Regarding the yields of the Treasury bonds, a stabilization of the rates is now observed. As for the economic relief package, the Senate will open the debate this week, with Democrats trying to pass the legislation using so-called "reconciliation", according to Reuters. Through this maneuver, the bill can be passed with a simple majority. In individual stocks, Amazon -1.64%, Tesla -4.45% and Apple -2.09%. Thus, the S&P 500 -0.81%, DJIA -0.46% and NASDAQ -1.69% fell.

### Europe:

The main European indexes ended mostly higher amid the stabilization of copper prices and the return of calm in the bond market. In this regard, the vice-president of the European Central Bank, Luis de Guindos, announced that the ECB has the flexibility to counteract any unwanted increase in bond yields. In economic data, inflation in the Euro zone remained stable in February, increasing by 0.2% compared to the previous month. Thus, the pan-European STOXX 600 index closed higher driven by the materials +1.04% and financials +0.81% sectors. In individual stocks, the German manufacturer Kion Group gained by 6.46% after presenting its earnings report for the year. In Germany, retail sales fell more than expected in January due to ongoing blockades as a means of pandemic containment. Thus, FTSE 100 +0.38%, CAC 40 +0.29%, DAX +0.19%, IBEX 35 -0.27%, STOXX 600 +0.19% closed mostly higher.

### Asia:

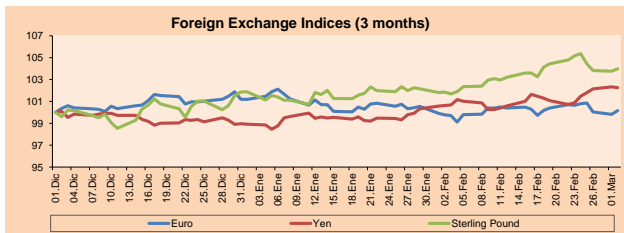
Asian markets closed the day with mixed returns, as concerns persist over inflation expectations and a likely end to cheap money. In China, stocks fell after the country's Banking and Insurance Regulatory Commission noted that there was a risk of bubbles bursting in foreign markets (due to recent high prices in the US and Europe). For this reason, he announced that they are analyzing measures to manage capital inflows in order to avoid turbulence in the domestic market, according to Reuters. In addition, fears of a less flexible government policy are still present and a parliamentary session is approaching this week in which the path of economic recovery in the country and a 5-year plan to face stagnation will be defined. The deterioration in sentiment also affected markets in Hong Kong. In Australia, the Reserve Bank of Australia advised that it will not change its current policy, which has a cash rate of 0.1%. On the other hand, in South Korea, stocks led after favorable export data and manufacturing activity. Thus, the KOSPI Composite +1.03% and NIFTY 50 +1.07% rose; on the other hand, the Shanghai Composite -1.21%, Shenzhen -0.71% and Hang Seng -1.21% fell, among other indices.



Source: Bloomberg

Currency	Price	1 D*	5 D*	1 M*	YTD*
▲ Euro	1.2091	0.35%	-0.49%	-0.37%	-1.02%
▲ Yen	106.6900	-0.07%	1.37%	1.92%	3.33%
▲ Sterling Pound	1.3955	0.22%	-1.12%	1.80%	2.08%
▲ Yuan	6.4706	0.07%	0.06%	0.64%	-0.87%
▲ Hong Kong Dollar	7.7570	0.01%	0.04%	0.05%	0.05%
▲ Brazilian Real	5.6645	0.53%	4.10%	3.52%	8.96%
▲ Argentine Peso	90.1618	0.08%	0.70%	3.26%	7.19%

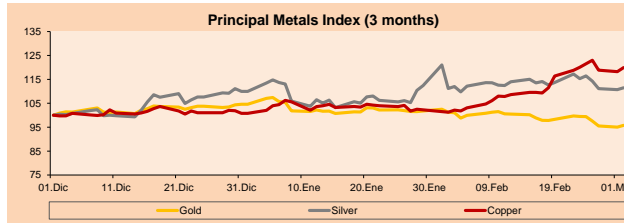
\*Legend: Variation 1D: 1 Day; 5D: 5 Days; 1M: 1 Month; YTD: Var. % 12/31/20 to date



Base: 01/12/20=100  
Source: Bloomberg

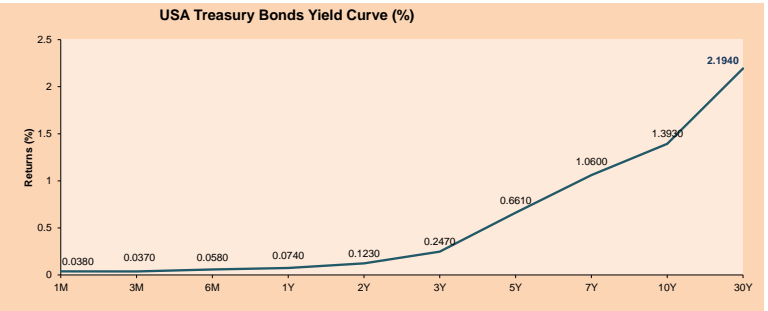
Commodities	Close	1 D*	5 D*	1 M*	YTD*
▲ Oro (US\$ Oz. T) (LME)	1,738.36	0.77%	-3.73%	-5.32%	-8.43%
▲ Plata (US\$ Oz. T) (LME)	26.76	0.72%	-3.29%	-0.83%	1.37%
▲ Cobre (US\$ TM) (LME)	9,220.25	1.44%	-0.12%	17.27%	18.99%
▲ Zinc (US\$ TM) (LME)	2,832.50	1.22%	-0.27%	10.80%	3.78%
▼ Petróleo WTI (US\$ Barril) (NYM)	59.75	-4.47%	-3.11%	14.73%	22.72%
▲ Estano (US\$ TM) (LME)	24,870.00	4.76%	-12.03%	7.20%	21.05%
▲ Plomo (US\$ TM) (LME)	2,061.50	0.18%	-1.88%	2.64%	4.34%
▲ Alúcar #11 (US\$ Libra) (NYB-ICE)	16.43	1.36%	-3.41%	8.95%	11.92%
▲ Casaca (US\$ TM) (NYB-ICE)	2,845.00	0.23%	5.84%	6.91%	4.34%
▼ Café Arabica (US\$ TM) (NYB-ICE)	133.85	-1.44%	-3.22%	7.08%	2.84%

\*Leyenda: Variación 1D: 1 Día; 5D: 5 Días; 1M: 1 Mes; YTD: Var. % 31/12/20 a la fecha



Base: 01/12/20=100  
Source: Bloomberg

ETFs	Curr.	Close	1D	5D	30 D	YTD	Exchange
SPDR S&P 500 ETF TRUST	USD	386.54	-0.78%	-0.25%	4.45%	3.39%	NYSE Arca
ISHARES MSCI EMERGING MARKET	USD	54.63	-0.98%	-2.60%	2.48%	5.73%	NYSE Arca
ISHARES IBOXX HIGH YLD CORP	USD	86.97	-0.15%	-0.54%	0.00%	-0.38%	NYSE Arca
FINANCIAL SELECT SECTOR SPDR	USD	33.20	-0.36%	0.89%	14.68%	12.62%	NYSE Arca
VANECK GOLD MINERS	USD	31.96	3.43%	-4.43%	-7.38%	-11.27%	NYSE Arca
ISHARES RUSSELL 2000 ETF	USD	221.72	-1.92%	-0.02%	7.86%	13.09%	NYSE Arca
SPDR GOLD SHARES	USD	162.41	0.54%	-3.97%	-5.91%	-8.94%	NYSE Arca
ISHARES 20+ YEAR TREASURY BO	USD	141.07	0.01%	-0.49%	-7.19%	-10.56%	NASDAQ GM
INVESCO COO TRUST SERIES 1	USD	318.40	-1.60%	-0.96%	1.22%	1.49%	NASDAQ GM
ISHARES NASDAQ BIOTECHNOLOGY	USD	156.37	-2.05%	-2.19%	-2.66%	3.22%	NASDAQ GM
ENERGY SELECT SECTOR SPDR	USD	49.13	-0.55%	1.15%	24.95%	29.63%	NYSE Arca
PROSHARES ULTRA VIX ST FUTUR	USD	8.61	1.06%	-2.05%	-41.19%	-18.15%	Cboe BZX
UNITED STATES OIL FUND LP	USD	40.07	-1.31%	-3.72%	13.90%	21.39%	NYSE Arca
ISHARES MSCI BRAZIL ETF	USD	32.11	0.85%	-6.60%	-6.08%	-13.38%	NYSE Arca
SPDR S&P OIL & GAS EXP & PR	USD	82.13	-0.79%	0.59%	27.69%	40.39%	NYSE Arca
UTILITIES SELECT SECTOR SPDR	USD	59.47	-0.30%	-2.04%	-4.31%	-5.15%	NYSE Arca
ISHARES US REAL ESTATE ETF	USD	86.86	-0.81%	-3.21%	1.85%	1.41%	NYSE Arca
SPDR S&P BIOTECH ETF	USD	146.85	-3.13%	-2.64%	-3.94%	4.31%	NYSE Arca
ISHARES IBOXX INVESTMENT GRA	USD	131.98	-0.11%	-0.35%	-2.67%	-4.45%	NYSE Arca
ISHARES JP MORGAN USD EMERGI	USD	110.22	-0.06%	-1.02%	-3.19%	-4.91%	NASDAQ GM
REAL ESTATE SELECT SECT SPDR	USD	37.15	-0.62%	-3.38%	1.06%	1.61%	NYSE Arca
ISHARES CHINA LARGE-CAP ETF	USD	49.40	-1.93%	-4.65%	0.08%	6.40%	NYSE Arca
CONSUMER STAPLES SPDR	USD	63.83	-0.17%	-1.94%	-0.41%	-5.37%	NYSE Arca
VANECK JR GOLD MINERS	USD	46.57	3.51%	-5.61%	-7.01%	-14.14%	NYSE Arca
SPDR BBG BARC HIGH YIELD BND	USD	108.58	-0.22%	-0.66%	0.17%	-0.33%	NYSE Arca
VANGUARD REAL ESTATE ETF	USD	87.41	-0.96%	-3.11%	2.89%	2.92%	NYSE Arca
GRAYSCALE BITCOIN TRUST BTC	USD	44.12	-3.71%	-3.75%	27.18%	37.88%	OTC US



Source: Bloomberg

Capital Market Laboratory Coordinator: Economist Bruno Bellido  
Collaboration: Piero Best, Maria Camarena, Alonso Stephen Hernández and Adrian Paredes  
email: pulsobursatil@ulima.edu.pe  
facebook: www.facebook.com/pulsobursatil

The content of this document is just for informational purposes. The information and opinions expressed should not be considered as recommendations for future decisions. Under any circumstances, the Capital Market Laboratory of University of Lima will be responsible for the use of the statements in this document.

LIMA

Stocks

Ticker	Currency	Price	1D*	5D*	30D*	YTD*	Frequency	Volume (US\$)	Beta	Dividend Yield (%)	Price Earning	Market Cap. (M US\$)	Economic Sector*	Index Weight
▲ ALICORC1 PE**	S/.	8.24	0.00%	-1.17%	-1.87%	-0.22%	100.00%	1,738,517	0.66	3.03	21.51	1,916.41	Industrial	3.53%
▲ ATACOCB1 PE**	S/.	0.17	0.00%	0.00%	17.24%	23.19%	90.00%	7,064	1.09	0.00	-	43.81	Mining	1.02%
▼ BACKUSI1 PE**	S/.	23.90	-0.42%	3.91%	8.64%	18.61%	90.00%	7,469	0.54	1.47	11.46	8,769.44	Industrial	0.82%
▼ BAP PE**	US\$	159.00	-0.31%	-2.81%	5.65%	-1.00%	100.00%	7,029,536	1.64	5.54	-	15,006.79	Diverse	5.82%
▼ BVN PE**	US\$	11.20	0.00%	-2.18%	6.67%	-6.67%	95.00%	267,979	1.25	0.00	-	3,087.11	Mining	5.88%
- CASAGRC1 PE**	S/.	6.10	0.00%	-0.81%	9.91%	28.42%	90.00%	30,684	0.59	3.70	10.95	140.15	Agricultural	1.31%
- BBVAC1 PE**	S/.	2.47	0.00%	0.82%	0.82%	13.82%	100.00%	40,466	0.66	3.49	25.85	4,398.85	Finance	2.85%
▲ CORAREI1 PE**	S/.	1.13	1.80%	-0.88%	17.71%	26.97%	100.00%	56,480	0.60	6.18	6.74	421.60	Industrial	1.72%
▼ CPACASC1 PE**	S/.	6.05	-0.66%	-1.63%	5.22%	14.15%	100.00%	345,495	0.59	3.80	43.21	752.21	Industrial	2.38%
▲ CVERDEC1 PE**	US\$	27.30	1.11%	-0.73%	25.23%	30.50%	100.00%	140,502	0.88	0.00	44.38	9,556.53	Mining	5.25%
▲ ENGEPEC1 PE**	S/.	2.55	1.19%	2.82%	10.87%	27.50%	85.00%	168,751	0.49	8.62	15.59	1,974.47	Public Services	1.44%
- ENDISPC1**	S/.	5.90	0.00%	-1.67%	4.98%	9.26%	80.00%	9,656	0.49	0.00	13.83	1,027.64	Public Services	0.98%
▲ FERREYC1 PE**	S/.	2.14	0.47%	2.88%	4.39%	22.99%	100.00%	145,574	0.60	3.58	14.23	569.52	Diverse	4.90%
▲ AENZAC1 PE**	S/.	1.69	-1.17%	-1.74%	-6.11%	-2.87%	100.00%	440,162	0.81	0.00	-	401.93	Diverse	4.05%
▼ IFS PE**	US\$	33.90	-1.02%	-2.73%	7.28%	9.57%	100.00%	48,485	1.31	5.16	37.44	3,913.68	Diverse	7.22%
▼ INRETC1 PE**	US\$	44.30	-1.56%	-1.56%	5.48%	13.01%	100.00%	332,165	0.62	1.27	36.41	4,554.36	Diverse	5.28%
- LUSURC1 PE**	S/.	22.00	0.00%	-5.17%	-19.71%	-13.73%	90.00%	156	0.49	0.00	21.59	2,922.08	Public Services	1.81%
- MINSUR1 PE**	S/.	3.02	0.00%	-4.13%	34.22%	63.24%	95.00%	96,645	0.79	0.00	-	2,374.85	Mining	3.09%
- PML PE**	US\$	0.16	0.00%	-1.89%	41.82%	47.17%	85.00%	750	1.48	0.00	-	41.21	Mining	2.12%
▼ RELAPAC1 PE**	S/.	0.13	-0.76%	0.78%	85.71%	88.41%	100.00%	74,401	0.40	0.00	-	294.99	Industrial	2.12%
▲ SCCO PE**	US\$	76.50	2.11%	-3.16%	15.21%	16.08%	95.00%	98,314	0.84	2.22	35.56	59,140.11	Mining	2.14%
- SIDERC1 PE**	S/.	1.02	0.00%	-1.92%	14.61%	20.00%	95.00%	30,464	0.84	33.55	12.12	341.63	Industrial	1.43%
▼ TV PE**	US\$	0.15	-1.32%	-15.73%	-3.85%	2.04%	100.00%	74,200	1.51	0.00	-	148.36	Mining	2.93%
▲ UNACEMC1 PE**	S/.	1.85	0.54%	-0.54%	5.71%	19.35%	100.00%	35,665	0.79	0.70	40.53	917.44	Industrial	3.00%
- VOLCABC1 PE**	S/.	0.80	0.00%	2.56%	31.15%	53.85%	100.00%	51,735	0.89	0.00	-	889.55	Mining	5.90%
▲ NEXAPEC1 PE**	S/.	4.05	1.25%	0.00%	31.49%	43.11%	95.00%	13,475	1.06	0.00	-	1,459.24	Mining	1.56%

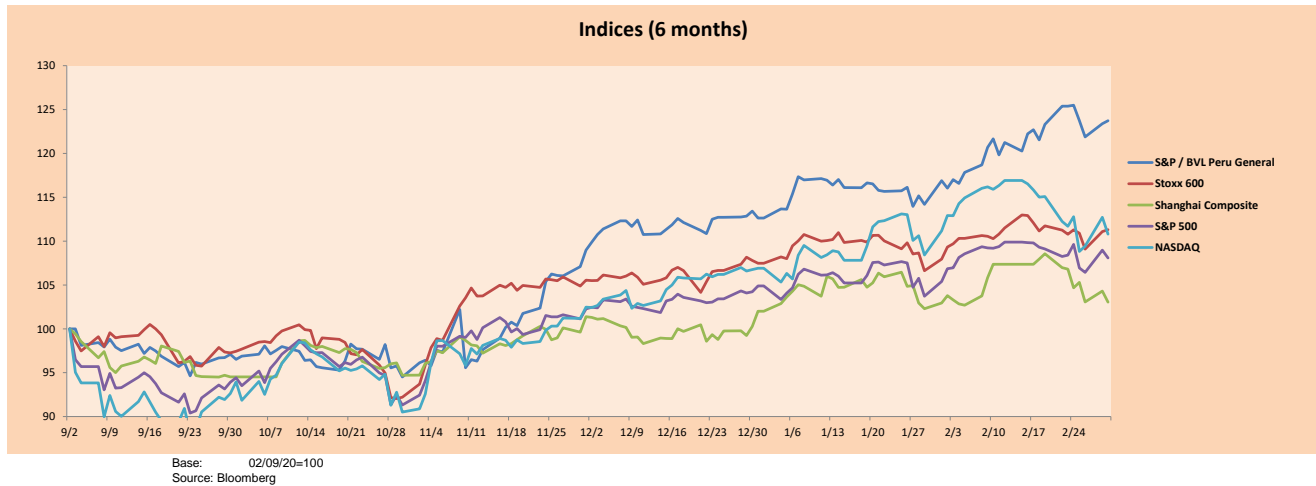
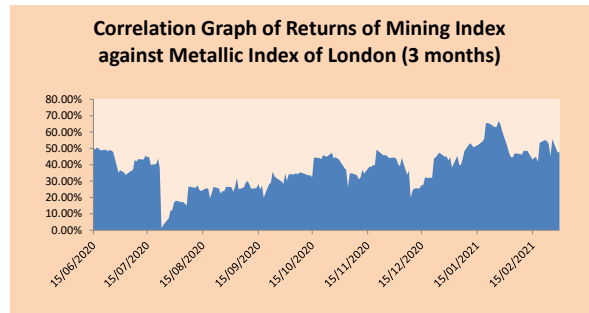
Quantity of shares: 26  
Source: Bloomberg, Economática  
\* Bloomberg Industry Classification System  
\*\* PER is used in the stock market and original currency of the instrument  
\*Legend: Variation 1D: 1 Day; 5D: 5 Days, 1M: 1 Month; YTD: Var.% 12/31/20 to date

Sectorial Indices

	Close	1D*	5D*	30D*	YTD*	Beta
▲ S&P/BVLMining	450.37	1.55%	-2.33%	16.53%	15.49%	0.89
▼ S&P/BVLConsumer	1,258.43	-0.46%	0.43%	4.39%	15.60%	0.38
▲ S&P/BVLIndustrials	220.33	0.12%	0.26%	4.62%	15.62%	0.51
▼ S&P/BVLFinancials	1,051.86	-0.11%	-2.32%	6.41%	1.74%	1.75
▼ S&P/BVLConstruction	234.16	-0.02%	-0.83%	3.90%	11.97%	0.53
▲ S&P/BVLPublicSvcs	638.74	0.13%	0.16%	-3.17%	4.01%	0.14
▲ S&P/BVLElectricUtil	623.57	0.13%	0.16%	-3.17%	4.01%	0.14

S&P/BVLConstructionTRPEN

\*Legend: Variation 1D: 1 Day; 5D: 5 Days, 1M: 1 Month; YTD: Var.% 12/31/20 to date



Capital Market Laboratory Coordinator: Economist Bruno Bellido  
Collaboration: Piero Best, Maria Camarena, Alonso Stephen Hernández and Adrian Paredes  
email: pulsohorsatil@ulima.edu.pe  
facebook: www.facebook.com/pulsohorsatil.ul

The content of this document is just for informational purposes. The information and opinions expressed should not be consider as recommendations for future decisions. Under any circumstances, the Capital Market Laboratory of University of Lima will be responsible for the use of the statements in this document.

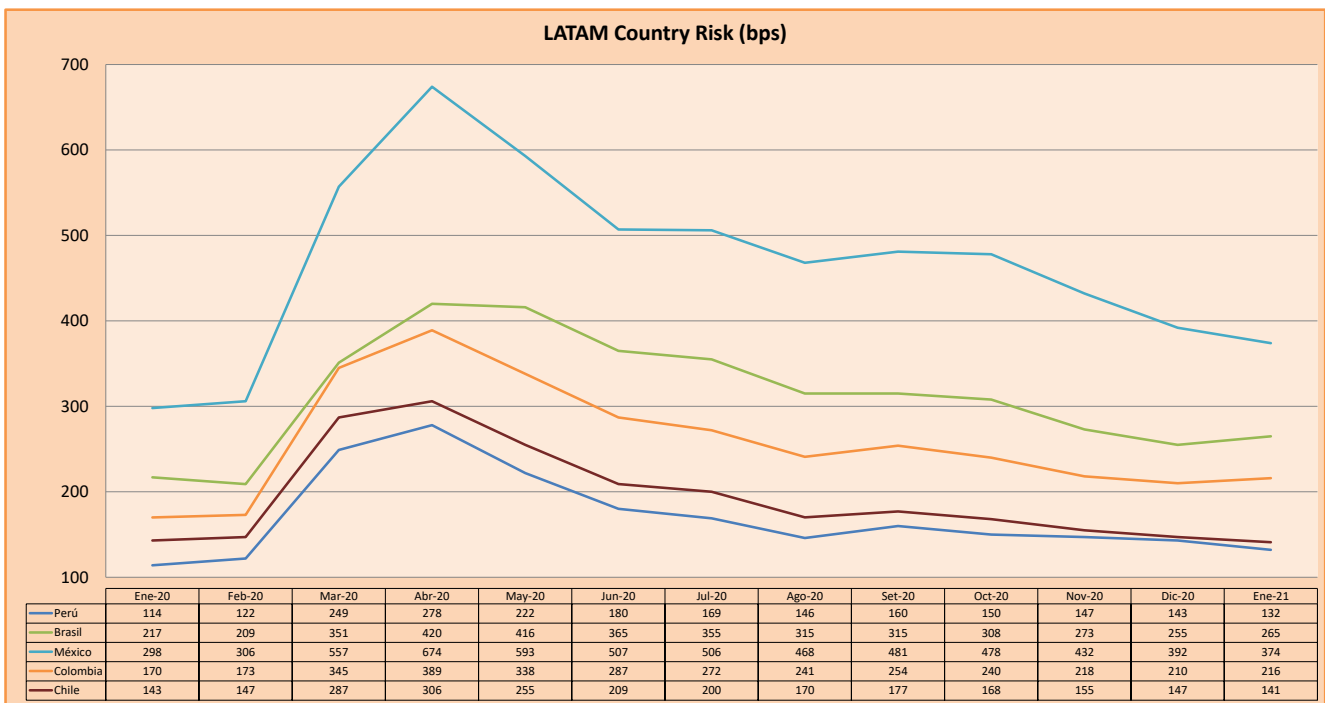
## SOVEREIGN RATING

RISK RATINGS			
Moody's	S&P	Fitch	
Aaa	AAA	AAA	Prime
Aa1 Aa2 Aa3	AA+ AA AA-	AA+ AA AA-	High credit quality
A1 A2 A3	A+ A A-	A+ A A-	Medium-high grade, with low credit risk
Baa1 Baa2 Baa3	BBB+ BBB BBB-	BBB+ BBB BBB-	Moderate Credit Risk
Ba1 Ba2 Ba3	BB+ BB BB-	BB+ BB BB-	It has speculative elements and it is subject to substantial credit risk
B1 B2 B3	B+ B B-	B+ B B-	It is considered speculative and it has high credit risk
Caa1 Caa2 Caa3	CCC+ CCC CCC-	CCC	Bad credit conditions and it is subject to high credit risk
Ca C	C D	DDD DD D	Very close to default or in default

Source: Bloomberg

Latin America Credit Rating			
Clasificadora de riesgo			
Country	Moody's	Fitch	S&P
Peru	A3	BBB+	BBB+
México	Ba2	BB-	BB-
Venezuela	C	WD	SD
Brazil	Ba2	BB-	BB-
Colombia	Baa2	BBB-	BBB-
Chile	A1	A-	A+
Argentina	Ca	WD	CCC+
Panama	Baa1	BBB-	BBB

Source: Bloomberg



Source: BCRP

Capital Market Laboratory Coordinator: Economist Bruno Bellido  
Collaboration: Piero Best, Maria Camarena, Alonso Stephen Hernández and Adrian Paredes  
email: pulsobursatil@ulima.edu.pe  
facebook: www.facebook.com/pulsobursatil.ul

The content of this document is just for informational purposes. The information and opinions expressed should not be considered as recommendations for future decisions. Under any circumstances, the Capital Market Laboratory of University of Lima will be responsible for the use of the statements in this document.