

PULSO BURSÁTIL

FACULTAD DE CIENCIAS EMPRESARIALES Y ECONÓMICAS
CARRERA DE ECONOMÍA
LABORATORIO DE MERCADO DE CAPITALES

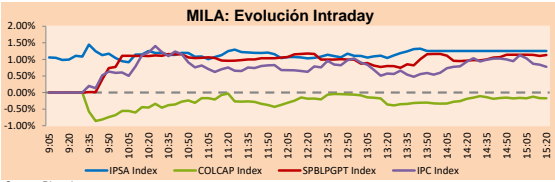


MILA

Lima, March 1, 2021

Main Indexes	Close	1 D	5 D	1 M	YTD	Cap. Burs. (US\$ bill)
▲ IPSA (Chile)	4,637.54	1.40%	1.49%	5.86%	11.02%	124.79
▲ IGPA (Chile)	23,403.58	1.32%	1.40%	5.83%	11.41%	156.74
▼ COLSC (Colombia)	1,056.67	-0.22%	-1.52%	-0.99%	-0.22%	5.76
▼ COLCAP (Colombia)	1,355.70	-0.28%	0.26%	-0.11%	-5.72%	79.88
▲ S&P/BVL (Perú)*	22,810.03	1.24%	-1.60%	5.55%	9.55%	118.61
▲ S&P/BVL SEL (Perú)	604.08	1.35%	-1.09%	4.26%	9.55%	95.92
▲ S&P/BVL LIMA 25	29,755.89	1.08%	-0.24%	7.19%	18.09%	117.59
▲ IPC (México)	44,784.58	0.43%	-0.36%	4.18%	1.63%	274.50
▲ S&P MILA 40	548.45	1.44%	-1.79%	4.79%	2.58%	5,670.36

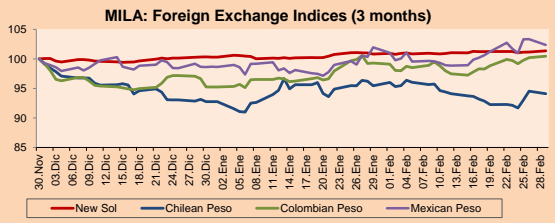
*Legend: Variation 1D: 1 day; 5D: 5 days; 1M: 1 Month; YTD: Var% 12/31/20 to date



Source: Bloomberg

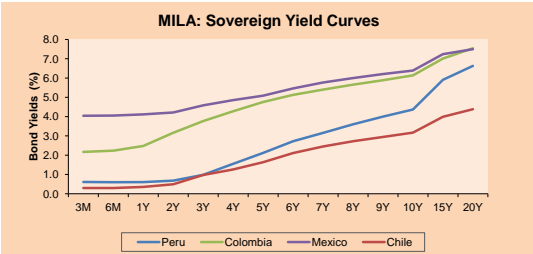
Currency	Price	1D*	5D*	30 D*	YTD*
▲ New Sol (PEN)	3,656.4	0.21%	0.11%	0.53%	1.06%
▼ Chilean Peso (CLP)	722.15	-0.45%	1.97%	-1.41%	1.46%
▲ Colombian Peso (COP)	3,616.94	0.24%	0.53%	1.15%	5.46%
▼ Mexican Peso (MXN)	20.66	-0.95%	-0.36%	0.40%	3.73%

*Legend: Variation 1D: 1 day; 5D: 5 days; 1M: 1 Month; YTD: Var% 12/31/20 to date



Base: 30/11/20=100
Source: Bloomberg

Fixed Income	Currency	Price	Bid Yield (%)	Ask Yield (%)	Duration
PERU 7.35 07/21/25	USD	125.367	1.41	1.32	3.87
PERU 4.125 08/25/27	USD	113.422	1.95	1.88	5.82
PERU 8.75 11/21/33	USD	158.045	3.20	3.13	8.82
PERU 6.55 03/14/37	USD	138.094	3.40	3.34	10.44
PERU 5.625 11/18/2050	USD	137.903	3.57	3.53	16.76
CHILE 2.25 10/30/22	USD	102.927	0.59	0.36	1.63
CHILE 3.125 01/21/26	USD	108.896	1.29	1.19	4.58
CHILE 3.625 10/30/42	USD	105.614	3.27	3.25	15.44
COLOM 11.85 03/09/28	USD	158.746	2.74	2.51	5.21
COLOM 10.375 01/28/33	USD	158.816	4.21	3.97	7.96
COLOM 7.375 09/18/37	USD	134.282	4.48	4.38	10.45
COLOM 6.125 01/18/41	USD	121.548	4.51	4.45	12.45
MEX 4 10/02/23	USD	121.548	4.507	4.446	12.45
MEX5.55 01/45	USD	118.343	4.34	4.29	14.21



Source: Bloomberg

Equity

Largest gains	Exchange	Currency	Price	▲%
SOUTHERN COPPER	Peru	USD	74.92	5.03
GRUPO AEROPORTUA	Mexico	MXN	126.43	4.18
VOLCAN CIA MIN-B	Peru	PEN	0.80	3.90
BANCO CRED INVER	Chile	CLP	32400.00	3.18
SOQUIMICH-B	Chile	CLP	39998.00	3.09

Per Turnover	Exchange	Amount (US\$)
GRUPO F BANORT-O	Mexico	28,708,164
AMERICA MOVIL-L	Mexico	25,941,061
WALMART DE MEXIC	Mexico	25,492,172
GRUPO MEXICO-B	Mexico	24,319,745
AERO DEL SURES-B	Mexico	19,199,765

Largest losses	Exchange	Currency	Price	▼%
CEMENTOS ARGOS	Colombia	COP	5610	-2.77
SURAMERICANA	Colombia	COP	23060	-2.58
AERO DEL SURES-B	Mexico	MXN	382.13	-2.38
GRUPO FIN INB-O	Mexico	MXN	18.51	-1.86
FIBRA TERRA	Mexico	MXN	28.95	-1.83

Per Volume	Exchange	Volume
ITAU CORPBANCA	Chile	392,615,799
BANCO SANTANDER	Chile	93,760,634
ENEL CHILE SA	Chile	73,059,801
ENEL AMERICAS SA	Chile	61,326,806
BANCO DE CHILE	Chile	58,662,668

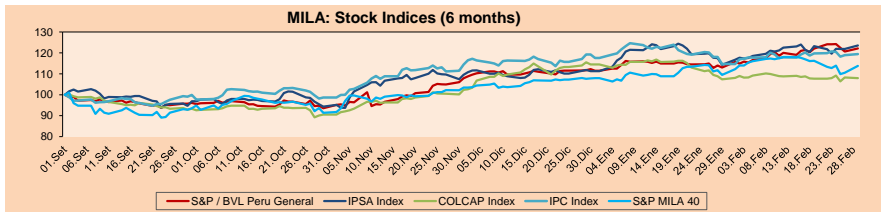
MILA

Peru: The General Index of the BVL ended today's session with a positive result of +1.24%. The index maintains an annual accumulated positive trend of +9.55% in local, while the adjusted yield in dollars amounts to +8.40%. Then, the S&P / BVL Peru SEL varied by +1.35% while the S&P / BVL LIMA 25 by +1.08%. The PEN spot reached S / 3.6564. Headline: Public investment returns to positive with a boost from national and municipal works.

Chile: The IPSA index ended the day with a positive return of +1.40%. The sectors that benefited the most during the session were Materials (+2.88%) and Finance (+2.05%). The stocks with the best performance were Banco de Crédito e Inversiones (+3.18%) and Sociedad Química y Minera de C (+3.09%). Headline: United Arab Emirates, Paraguay and Switzerland, the surprises that broke through Chile's export markets in 2020.

Colombia: The COLCAP index closed today with a negative return of -0.28%. The sectors most affected in the session were Materials (-1.25%) and Basic Products (-0.45%). The worst performing stocks were Cementos Argos SA (-2.77%) and Grupo de Inversiones Suramerica (-2.58%). Headline: Avianca temporarily suspends more than 20 international routes due to the pandemic.

Mexico: The IPC index closed the day with a positive return of +0.43%. The sectors that benefited the most during the session were Non-basic consumer products (+2.98%) and Real estate (+1.09%). The stocks with the best performance were Asea SAB de CV (+6.80%) and Grupo Aeroportuario del Centro (+4.18%). Headline: Alemana Continental will invest in Mexico more than US \$ 70M in plant expansion.

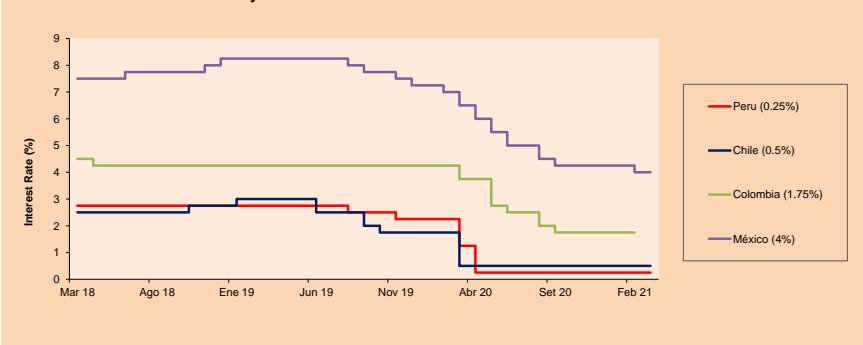


Base: 02/09/20=100
Source: Bloomberg

ETFs

ETFs	Curr.	Close	1D	5D	30 D	YTD	Exchange
▲ iShares MSCI All Peru Caped Index Fund	USD	37.23	0.43%	-3.85%	8.49%	7.35%	NYSE Arca
▲ iShares MSCI All Chile Caped Index Fund	USD	32.44	3.28%	-0.12%	8.39%	7.38%	Cboe BZX
▲ Global X MSCI Colombia	USD	10.231	1.80%	-1.34%	-1.05%	-9.94%	NYSE Arca
▲ iShares MSCI Mexico Capped	USD	41.47	1.99%	-1.17%	3.18%	-3.54%	NYSE Arca
▲ iShares FTSE Emerging Markets	USD	55.17	2.68%	-1.20%	3.49%	6.77%	NYSE Arca
▲ Vanguard FTSE Emerging Markets	USD	53.93	2.74%	-0.99%	4.35%	7.62%	NYSE Arca
▲ iShares Core MSCI Emerging Markets	USD	66.44	2.64%	-0.95%	4.09%	7.09%	NYSE Arca
▲ iShares JP Morgan Emerging Markets Bonds	USD	63.39	1.77%	-0.50%	2.77%	3.78%	Cboe BZX
▲ Morgan Stanley Emerging Markets Domestic	USD	6.03	0.84%	-1.79%	-1.31%	-4.13%	New York

MILA: Policy Rate



Source: Bloomberg

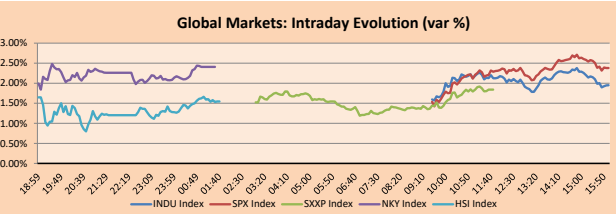
Capital Market Laboratory Coordinator: Economist Bruno Bellido
Collaboration: Piero Best, Maria Camarena, Alonso Stephen Hernández and Adrian Paredes
email: pulsobursatil@ulima.edu.pe
facebook: www.facebook.com/pulsobursatil.ul

The content of this document is just for informational purposes. The information and opinions expressed should not be considered as recommendations for future decisions. Under any circumstances, the Capital Market Laboratory of University of Lima will be responsible for the use of the statements in this document.

WORLD

Main Indices	Close	1 D*	5 D*	1 M*	YTD*	Market Cap. (US\$ Mill.)
▲ Dow Jones (USA)	31,535.51	1.95%	0.04%	4.38%	3.04%	9,460,121
▲ Standard & Poor's 500 (EEUU)	3,901.82	2.38%	0.65%	3.39%	3.88%	33,638,889
▲ NASDAQ Composite (USA)	13,588.83	3.01%	0.41%	1.38%	5.44%	21,489,727
▲ Stoxx EUROPE 600 (Europe)	412.44	1.84%	-0.15%	1.61%	3.36%	9,409,619
▲ DAX (Germany)	14,012.82	1.64%	0.45%	1.28%	2.14%	1,053,967
▲ FTSE 100 (United Kingdom)	6,588.53	1.62%	-0.36%	1.10%	1.98%	1,371,833
▲ CAC 40 (France)	5,792.79	1.57%	0.44%	4.13%	4.35%	1,567,711
▲ IBEX 35 (Spain)	8,378.10	1.86%	3.28%	5.37%	3.77%	457,208
▲ MSCI AC Asia Pacific Index	210.32	1.81%	-2.78%	0.13%	5.20%	26,930,112
▲ HANG SENG (Hong Kong)	29,452.57	1.63%	-2.86%	0.70%	8.16%	4,478,383
▲ SHANGHAI SE Comp. (China)	3,551.40	1.21%	-2.50%	0.50%	2.26%	6,754,583
▲ NIKKEI 225 (Japan)	29,663.50	2.41%	-1.18%	5.00%	8.51%	4,019,450
▲ S&P / ASX 200 (Australia)	6,789.55	1.74%	0.13%	0.86%	3.55%	1,670,864
▲ KOSPI (South Korea)	3,012.95	0.43%	-0.36%	0.99%	7.42%	1,785,362

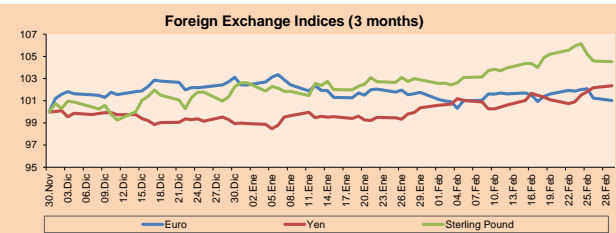
*Legend: Variation 1D: 1 Day; 5D: 5 Days; 1M: 1 Month; YTD: Var.% 12/31/20 to date



Source: Bloomberg

Currency	Price	1 D*	5 D*	1 M*	YTD*
▼ Euro	1.2049	-0.22%	-0.89%	-0.72%	-1.37%
▼ Yen	106.7600	0.18%	1.60%	1.99%	3.40%
▼ Sterling Pound	1.3925	-0.06%	-0.98%	1.58%	1.87%
▼ Yuan	6.4660	-0.20%	0.02%	0.57%	-0.94%
▼ Hong Kong Dollar	7.7563	0.00%	0.04%	0.04%	0.04%
▲ Brazilian Real	5.6344	0.56%	3.19%	2.97%	8.39%
▲ Argentine Peso	90.0867	0.29%	0.72%	3.18%	7.06%

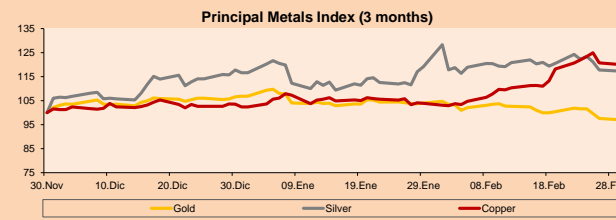
*Legend: Variation 1D: 1 Day; 5D: 5 Days; 1M: 1 Month; YTD: Var.% 12/31/20 to date



Base: 30/11/20=100
Source: Bloomberg

Commodities	Close	1 D*	5 D*	1 M*	YTD*
▼ Oro (US\$ Oz. T) (LME)	1,725.04	-0.52%	-4.68%	-6.64%	-9.13%
▼ Plata (US\$ Oz. T) (LME)	26.57	-0.38%	-5.37%	-1.54%	0.64%
▼ Cobre (US\$ TM) (LME)	9,089.00	-0.55%	-0.48%	15.60%	17.29%
▲ Zinc (US\$ TM) (LME)	2,798.25	0.82%	-2.96%	9.48%	2.53%
▲ Petróleo WTI (US\$ Barril) (NYM)	60.64	-1.40%	-1.72%	16.44%	24.54%
▲ Estano (US\$ TM) (LME)	23,739.00	-10.55%	-18.30%	2.33%	15.55%
▲ Plomo (US\$ TM) (LME)	2,057.75	0.93%	-3.65%	2.45%	4.15%
▲ Acúcar #11 (US\$ Libra) (NYB-ICE)	16.21	-1.46%	-7.05%	7.49%	10.42%
▲ Cacao (US\$ TM) (NYB-ICE)	2,639.00	1.34%	5.98%	6.67%	4.10%
▼ Café Arábica (US\$ TM) (NYB-ICE)	135.80	-1.24%	0.63%	8.64%	4.34%

*Legend: Variación 1D: 1 Día; 5D: 5 Días; 1M: 1 Mes; YTD: Var.% 31/12/20 a la fecha



Base: 30/11/20=100
Source: Bloomberg

Equity

Germany (Stocks from DAX Index)

Largest gains	Curr.	Price	▲%	Exchange	Largest losses	Curr.	Price	▼%	Exchange
BAYN GY	EUR	52.34	4.43	Xetra	CON GY	EUR	118.4	-0.42	Xetra
DPW GY	EUR	42.44	3.36	Xetra	DTE GY	EUR	15.025	-0.03	Xetra
DHER GY	EUR	108.4	2.55	Xetra	DB1 GY	EUR	136	0.33	Xetra
1COV GY	EUR	61.42	2.44	Xetra	DAI GY	EUR	66.61	0.54	Xetra

Europe (Stocks from STOXX EUROPE 600)

Largest gains	Curr.	Price	▲%	Exchange	Largest losses	Curr.	Price	▼%	Exchange
IAG LN	Gbp	205.3	6.95	Londres	JDEP NA	EUR	32.8	-2.53	EN Amsterdam
BWY LN	Gbp	299.7	6.73	Londres	ALE PW	PLN	63.07	-1.94	Warsaw
MTX GY	EUR	208.9	6.04	Xetra	CHR DC	DKK	518.6	-1.93	Copenhagen
TW/ LN	Gbp	166.55	5.68	Londres	VIS SQ	EUR	57.15	-1.89	Soc.Bol SIBE

Global Overview:

United States:

US markets ended today's session with positive returns on a combination of strong economic data and stabilization in the bond market. The Institute of Supply Management announced that the manufacturing index rose to 60.8% last month, from 58.7% in January, matching a two-year high. On the other hand, central banks around the world have started to oppose higher rates. The Reserve Bank of Australia increased its purchase of long-term debt, while the European Central Bank announced that it "can and should react" against any undue tightening of financial conditions. However, the problems with the rate hike, which the Federal Reserve has suggested is healthy because it reflects hope for a better economy in the future, are not likely to just fade away. Finally, Johnson & Johnson + 0.56% affirmed that it began shipping 4 million doses on Monday and that Americans should begin receiving their vaccine within 48 hours, after being approved last Saturday by the Food and Drug Administration. This can be stored for three months in refrigerators between 2° - 8° C and consists of only one dose. In conclusion, the main indices S&P 500 + 2.38%, DJIA + 1.95% and NASDAQ + 3.01% finished higher.

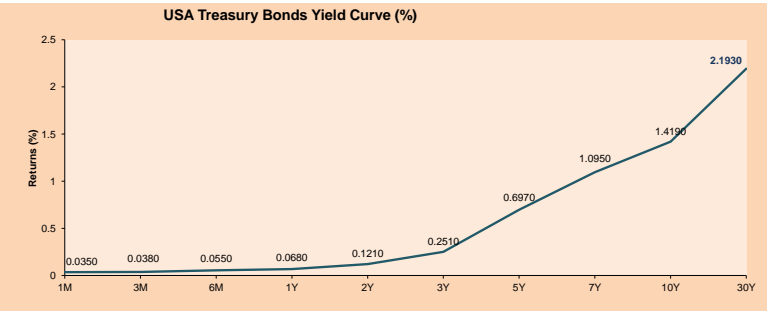
Europe:

Major European markets ended today's session with positive returns following a pullback in bond yields. Similarly, positive expectations due to the increase in COVID-19 vaccines boosted leisure and travel related sectors. In economic data, manufacturing activity accelerated in the major eurozone economies in February, improving expectations for economic recovery this year. The STOXX 600 closed the day with gains in most sectors. Similarly, expectations of a recovery in travel demand in 2021 boosted price targets in this sector. On the other hand, British stocks rose after Finance Minister Rishi Sunak announced tax cuts in the housing sector. Finally, the main German index ended the session with positive returns following advances in the Health Care +3.04% and Industrial +2.83% sectors. In individual stocks Bayern gained +4.58% and DHL postal services advanced +3.40%. Thus FTSE 100 +1.62%, CAC 40 +1.57%, DAX +1.64% and STOXX 600 +1.84% closed higher.

Asia:

Major Asian indexes closed higher today on optimism about the U.S. stimulus package and stabilization in the bond market. In Hong Kong, Hang Seng Indexes Co.Ltd announced it will change the main stock benchmark index to include 100 companies, as part of an effort to ensure the index better reflects the range of industries and reduce the impact of financial companies on the index, according to Reuters. In individual stocks Tencent and Alibaba rose +5.21% and +0.95% respectively. Similarly, Shanghai Composite closed higher driven by the materials +2.96% and information technology +2.36% sectors. On the other hand, in Japan, stocks closed higher after investors took advantage of the fall experienced last session. Finally, the Australian index ended the session with gains due to the increase in employment announcements and housing prices that strengthened hopes of recovery. Thus, NIKKEI +2.41%, Hang Seng +1.63%, S&P/ASX 200, CSI 300 +9.98%, Shanghai Composite +1.21% ended the session with positive performances.

ETFs	Curr.	Close	1D	5D	30 D	YTD	Exchange
SPDR S&P 500 ETF TRUST	USD	389.58	2.42%	0.66%	5.27%	4.20%	NYSE Arca
ISHARES MSCI EMERGING MARKET	USD	55.17	2.68%	-1.20%	3.49%	6.77%	NYSE Arca
ISHARES IBOXX HIGH YLD CORP	USD	87.10	0.76%	-0.15%	0.15%	-0.23%	NYSE Arca
FINANCIAL SELECT SECTOR SPDR	USD	33.32	3.13%	1.86%	15.09%	13.03%	NYSE Arca
VANECK GOLD MINERS	USD	30.90	-0.74%	-9.68%	-10.46%	-14.21%	NYSE Arca
ISHARES RUSSELL 2000 ETF	USD	228.07	3.55%	1.05%	9.98%	15.31%	NYSE Arca
SPDR GOLD SHARES	USD	161.53	-0.17%	-4.71%	-6.42%	-9.44%	NYSE Arca
ISHARES 20+ YEAR TREASURY BO	USD	141.06	-1.44%	-0.79%	-7.20%	-10.57%	NASDAQ GM
INVESTCO QQQ TRUST SERIES 1	USD	323.59	3.01%	0.36%	2.87%	3.14%	NASDAQ GM
ISHARES NASDAQ BIOTECHNOLOGY	USD	159.65	1.73%	-1.54%	-0.62%	5.39%	NASDAQ GM
ENERGY SELECT SECTOR SPDR	USD	48.40	2.69%	3.39%	25.64%	30.34%	NYSE Arca
PROSHARES ULTRA VIX ST FLUTUR	USD	8.52	-10.89%	-8.97%	-41.80%	-20.00%	Cboe BZX
UNITED STATES OIL FUND LP	USD	40.60	-1.72%	-1.65%	15.41%	22.99%	NYSE Arca
ISHARES MSCI BRAZIL ETF	USD	31.84	-0.19%	-4.87%	-6.87%	-14.11%	NYSE Arca
SPDR S&P OIL & GAS EXP & PR	USD	82.78	2.82%	3.57%	28.70%	41.50%	NYSE Arca
UTILITIES SELECT SECTOR SPDR	USD	59.65	2.21%	-0.93%	-4.02%	-4.86%	NYSE Arca
ISHARES US REAL ESTATE ETF	USD	87.57	0.25%	-1.87%	2.69%	2.24%	NYSE Arca
SPDR S&P BIOTECH ETF	USD	151.60	2.43%	-1.74%	-0.84%	7.69%	NYSE Arca
ISHARES BIOTECH INVESTMENT GRA	USD	132.13	-0.11%	-0.16%	-2.56%	-4.34%	NYSE Arca
ISHARES JIP MORGAN USD EMERGI	USD	110.29	0.24%	-0.85%	-3.13%	-4.85%	NASDAQ GM
REAL ESTATE SELECT SECT SPDR	USD	37.38	0.11%	-2.43%	1.69%	2.24%	NYSE Arca
ISHARES CHINA LARGE-CAP ETF	USD	50.37	2.65%	-2.46%	2.05%	8.49%	NYSE Arca
CONSUMER STAPLES SPDR	USD	63.94	1.01%	-1.63%	-0.23%	-5.20%	NYSE Arca
VANECK JR GOLD MINERS	USD	44.99	-1.68%	-10.57%	-10.16%	-17.05%	NYSE Arca
SPDR BBG BARC HIGH YIELD BND	USD	108.82	0.61%	-0.11%	0.39%	-0.11%	NYSE Arca
VANGUARD REAL ESTATE ETF	USD	88.26	0.44%	-1.56%	3.88%	3.92%	NYSE Arca
GRAYSCALE BITCOIN TRUST BTC	USD	46.82	6.06%	-14.36%	32.08%	43.19%	OTC US



Source: Bloomberg

LIMA

Stocks

Ticker	Currency	Price	1D*	5D*	30D*	YTD*	Frequency	Volume (US\$)	Beta	Dividend Yield (%)	Price Earning	Market Cap. (M US\$)	Economic Sector*	Index Weight
▼ ALICORC1 PE**	S/.	8.20	-0.22%	-1.52%	-0.99%	-0.22%	100.00%	3,249,759	0.67	3.05	21.41	1,912.27	Industrial	3.53%
▲ ATACOB1 PE**	S/.	0.17	0.59%	2.41%	17.24%	23.19%	90.00%	13,519	1.09	0.00	-	43.93	Mining	1.02%
▲ BACKUS1 PE**	S/.	24.00	3.45%	4.35%	9.09%	19.11%	90.00%	15,546	0.54	1.46	10.86	8,818.92	Industrial	0.82%
▼ BAP PE**	US\$	159.50	-0.56%	-2.15%	5.98%	-0.68%	100.00%	3,165,899	1.64	5.52	-	15,053.98	Diverse	5.82%
- BVN PE**	US\$	11.20	1.73%	-2.44%	6.67%	-6.67%	95.00%	560,528	1.25	0.00	-	3,087.11	Mining	5.88%
- CASAGRC1 PE**	S/.	6.10	0.00%	-3.17%	9.91%	28.42%	90.00%	3,754	0.62	3.70	10.95	140.53	Agricultural	1.31%
- BBVAC1 PE**	S/.	2.47	0.00%	0.41%	0.82%	13.82%	95.00%	16,446	0.67	3.49	25.85	4,410.64	Finance	2.85%
- CORARE1 PE**	S/.	1.11	0.91%	-3.48%	15.63%	24.72%	100.00%	87,373	0.59	6.29	6.62	416.48	Industrial	1.72%
▲ CPACASC1 PE**	S/.	6.09	0.66%	-0.98%	5.91%	14.91%	100.00%	22,495	0.59	3.78	43.50	758.86	Industrial	2.38%
▲ CVERDEC1 PE**	US\$	27.00	3.85%	0.00%	23.85%	29.06%	100.00%	169,031	0.87	0.00	43.89	9,451.51	Mining	5.25%
- ENGEPEC1 PE**	S/.	2.52	0.00%	0.80%	9.57%	26.00%	85.00%	5,963	0.49	8.73	15.40	1,956.47	Public Services	1.44%
- ENDISPC1**	S/.	5.90	0.00%	-1.67%	4.98%	9.26%	80.00%	2,971,806	0.48	0.00	13.83	1,030.39	Public Services	0.98%
▲ FERREYC1 PE**	S/.	2.13	1.43%	2.90%	3.90%	22.41%	100.00%	157,624	0.60	3.60	14.17	568.37	Diverse	4.90%
▲ AENZAC1 PE**	S/.	1.71	1.79%	-0.58%	-5.00%	-1.72%	100.00%	16,483	0.80	0.00	-	407.77	Diverse	4.05%
▼ IFS PE**	US\$	34.25	-0.72%	-0.72%	8.39%	10.70%	100.00%	830,583	1.31	5.11	37.72	3,954.08	Diverse	7.22%
▲ INRET1 PE**	US\$	45.00	1.12%	4.65%	7.14%	14.80%	100.00%	155,765	0.61	1.25	36.88	4,626.33	Diverse	5.28%
▼ LUSURC1 PE**	S/.	22.00	-5.17%	-5.09%	-19.71%	-13.73%	95.00%	21,854	0.51	3.17	21.59	2,929.91	Public Services	1.81%
▼ MINSUR1 PE**	S/.	3.02	-2.58%	-4.43%	34.22%	63.24%	95.00%	161,554	0.79	0.00	-	2,381.21	Mining	3.09%
▼ PML PE**	US\$	0.16	-2.50%	4.00%	41.82%	47.17%	90.00%	1,560	1.48	0.00	-	41.21	Mining	2.12%
▲ RELAPAC1 PE**	S/.	0.13	0.77%	3.15%	87.14%	89.86%	100.00%	115,013	0.40	0.00	-	298.06	Industrial	2.12%
▲ SCCO PE**	US\$	74.92	5.03%	-9.08%	12.83%	13.69%	95.00%	211,142	0.83	2.27	34.83	57,918.65	Mining	2.14%
▲ SIDERC1 PE**	S/.	1.02	0.99%	0.99%	14.61%	20.00%	95.00%	12,993	0.84	33.55	12.12	342.54	Industrial	1.43%
▼ TV PE**	US\$	0.15	-3.18%	-15.56%	-2.56%	3.40%	100.00%	77,421	1.51	0.00	-	150.34	Mining	2.93%
- UNACEMC1 PE**	S/.	1.84	0.00%	-1.60%	5.14%	18.71%	100.00%	33,073	0.79	0.71	40.31	914.93	Industrial	3.00%
▲ VOLCABC1 PE**	S/.	0.80	3.90%	3.90%	31.15%	53.85%	100.00%	1,634,823	0.89	0.00	-	891.93	Mining	5.90%
▲ NEXAPEC1 PE**	S/.	4.00	1.27%	1.27%	29.87%	41.34%	95.00%	17,039	1.06	0.00	-	1,445.24	Mining	1.56%

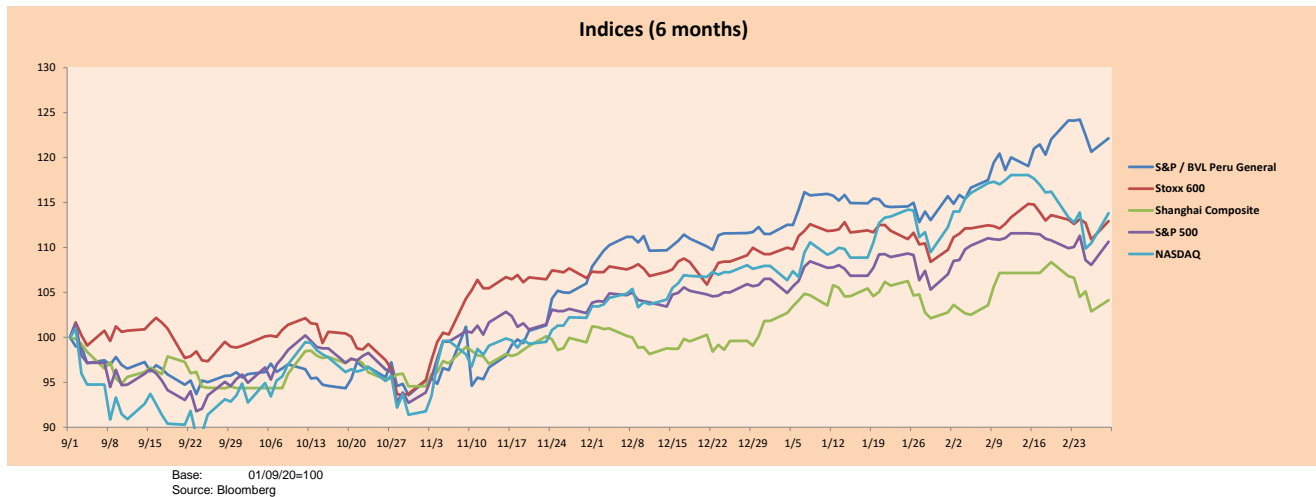
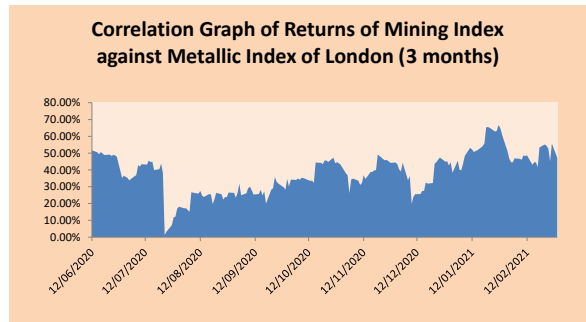
Quantity of shares: 26
 Source: Bloomberg, Economática
 * Bloomberg Industry Classification System
 ** PER is used in the stock market and original currency of the instrument
 *Legend: Variation 1D: 1 Day; 5D: 5 Days; 1M: 1 Month; YTD: Var.% 12/31/20 to date

Sectorial Indices

	Close	1D*	5D*	30D*	YTD*	Beta
▲ S&P/BVLMining	443.48	3.76%	-6.10%	14.74%	13.73%	0.89
▲ S&P/BVLConsumer	1,264.24	1.58%	2.99%	4.87%	16.13%	0.38
▲ S&P/BVLIndustrials	220.07	0.86%	0.19%	4.49%	15.49%	0.51
▼ S&P/BVLFinancials	1,053.00	-0.35%	-1.83%	6.53%	1.85%	1.75
▲ S&P/BVLConstruction	234.21	0.62%	-0.97%	3.92%	12.00%	0.53
- S&P/BVLPublicSvcs	637.92	0.00%	0.11%	-3.29%	3.88%	0.14
- S&P/BVLElectricUtil	622.77	0.00%	0.11%	-3.29%	3.88%	0.14

S&P/BVLConstructionTRPEN

*Legend: Variation 1D: 1 Day; 5D: 5 Days; 1M: 1 Month; YTD: Var.% 12/31/20 to date



Base: 01/09/20=100
 Source: Bloomberg

Capital Market Laboratory Coordinator: Economist Bruno Bellido
 Collaboration: Piero Best, Maria Camarena, Alonso Stephen Hernández and Adrian Paredes
 email: pulsohorsatil@ulima.edu.pe
 facebook: www.facebook.com/pulsohorsatil.ul

The content of this document is just for informational purposes. The information and opinions expressed should not be consider as recommendations for future decisions. Under any circumstances, the Capital Market Laboratory of University of Lima will be responsible for the use of the statements in this document.

SOVEREIGN RATING

RISK RATINGS

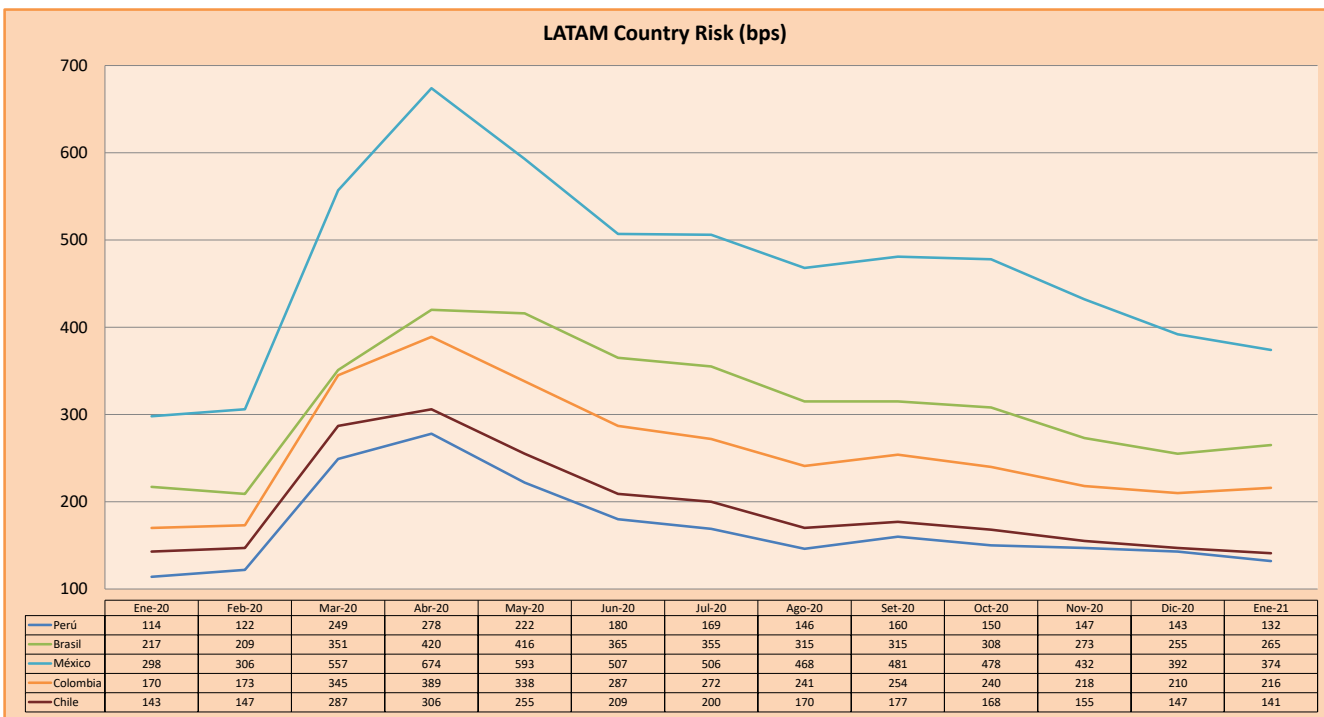
Moody's	S&P	Fitch	
Aaa	AAA	AAA	Prime
Aa1	AA+	AA+	High credit quality
Aa2	AA	AA	
Aa3	AA-	AA-	
A1	A+	A+	Medium-high grade, with low credit risk
A2	A	A	
A3	A-	A-	
Baa1	BBB+	BBB+	Moderate Credit Risk
Baa2	BBB	BBB	
Baa3	BBB-	BBB-	
Ba1	BB+	BB+	It has speculative elements and it is subject to substantial credit risk
Ba2	BB	BB	
Ba3	BB-	BB-	
B1	B+	B+	It is considered speculative and it has high credit risk
B2	B	B	
B3	B-	B-	
Caa1	CCC+		Bad credit conditions and it is subject to high credit risk
Caa2	CCC		
Caa3	CCC-	CCC	
Ca	C		Very close to default or in default
		DDD	
C	D	DD D	

Source: Bloomberg

Latin America Credit Rating			
Clasificadora de riesgo			
Country	Moody's	Fitch	S&P
Peru	A3	BBB+	BBB+
México	Ba2	BB-	BB-
Venezuela	C	WD	SD
Brazil	Ba2	BB-	BB-
Colombia	Baa2	BBB-	BBB-
Chile	A1	A-	A+
Argentina	Ca	WD	CCC+
Panama	Baa1	BBB-	BBB

Source: Bloomberg

LATAM Country Risk (bps)



Source: BCRP

Capital Market Laboratory Coordinator: Economist Bruno Bellido
Collaboration: Piero Best, Maria Camarena, Alonso Stephen Hernández and Adrian Paredes
email: pulsobursatil@ulima.edu.pe
facebook: www.facebook.com/pulsobursatil.ul

The content of this document is just for informational purposes. The information and opinions expressed should not be considered as recommendations for future decisions. Under any circumstances, the Capital Market Laboratory of University of Lima will be responsible for the use of the statements in this document.