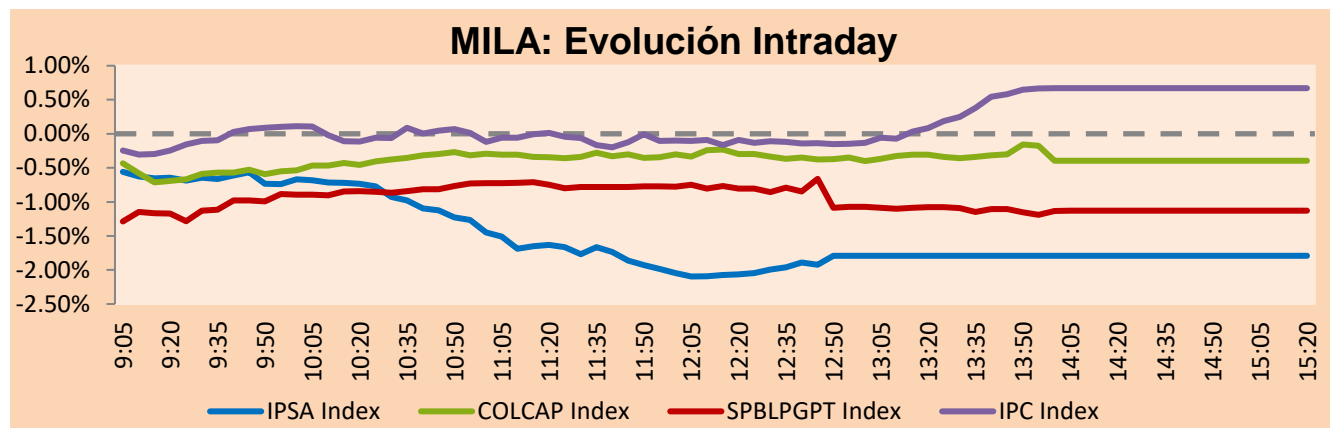


MILA

Lima, March 25, 2021

Main Indexes	Close	1 D	5 D	1 M	YTD	Cap. Burs. (US\$ bill)
▼ IPSA (Chile)	4,767.79	-1.54%	-2.27%	6.15%	16.21%	129.82
▼ IGPA (Chile)	24,013.09	-1.45%	-2.27%	5.85%	16.39%	155.80
▲ COLSC (Colombia)	1,050.85	0.44%	-0.08%	-0.83%	-0.82%	5.45
▼ COLCAP (Colombia)	1,320.11	-0.39%	-1.75%	-3.31%	-8.58%	79.21
▼ S&P/BVL (Perú)*	21,254.37	-1.13%	-4.74%	-4.97%	2.82%	103.58
▼ S&P/BVL SEL (Perú)	566.57	-0.36%	-4.04%	-3.95%	3.83%	91.53
▼ S&P/BVL LIMA 25	28,642.08	-0.13%	-2.86%	-2.24%	14.20%	102.60
▲ IPC (México)	47,012.37	0.66%	-1.18%	6.25%	7.52%	288.61
▼ S&P MILA 40	534.32	-1.64%	-4.62%	-0.43%	0.69%	5,967.69

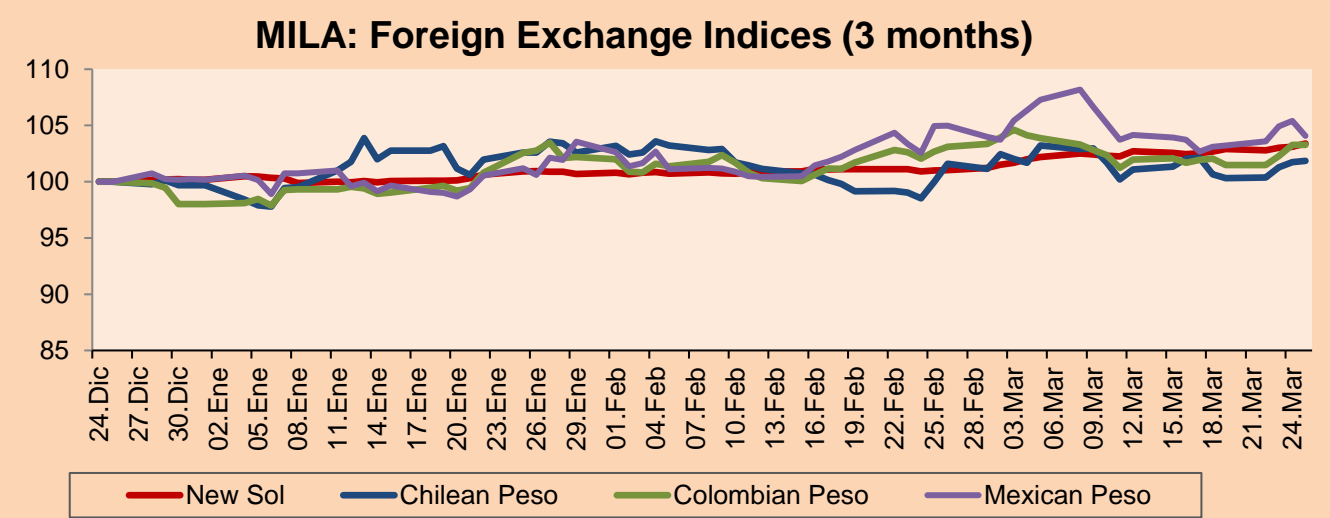
*Legend: Variation 1D: 1 day; 5D: 5 days; 1M: 1 Month; YTD: Var% 12/31/20 to date



Source: Bloomberg

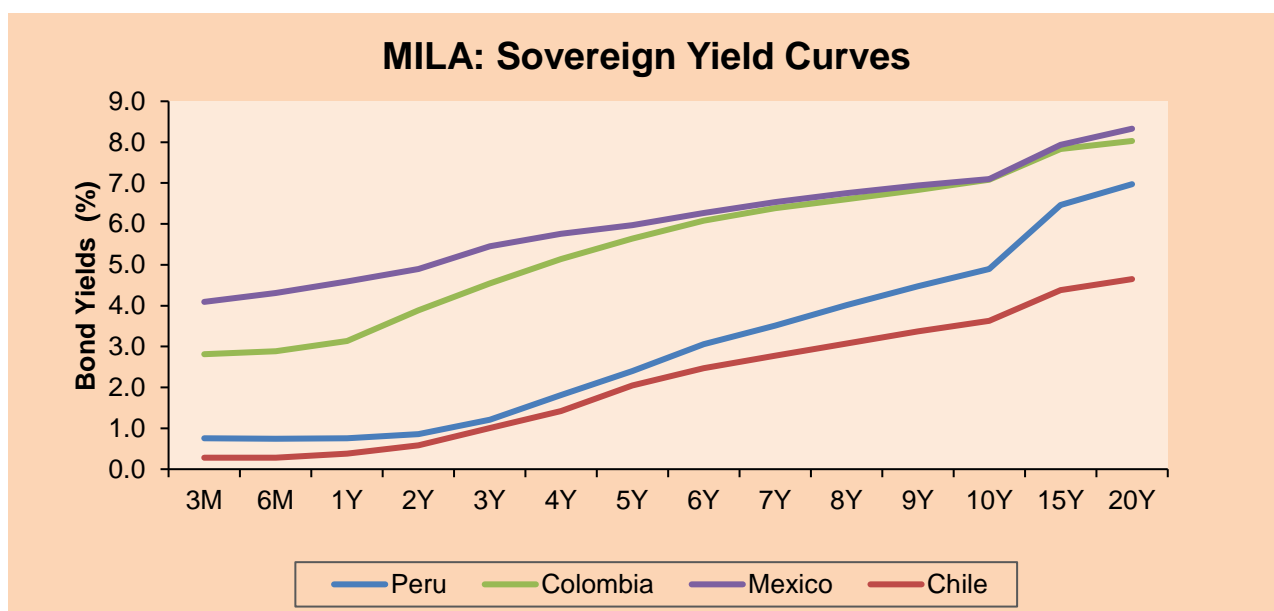
Currency	Price	1D*	5D*	30 D*	YTD*
▲ New Sol (PEN)	3.7345	0.29%	0.69%	2.25%	3.22%
▲ Chilean Peso (CLP)	727.21	0.10%	1.18%	2.85%	2.17%
- Colombian Peso (COP)	3,614.09	0.00%	1.21%	0.65%	5.38%
▼ Mexican Peso (MXN)	20.68	-1.26%	0.94%	0.71%	3.83%

*Legend: Variation 1D: 1 day; 5D: 5 days; 1M: 1 Month; YTD: Var% 12/31/20 to date



Base: 24/12/20=100
Source: Bloomberg

Fixed Income	Currency	Price	Bid Yield (%)	Ask Yield (%)	Duration
PERU 7.35 07/21/25	USD	124.185	1.59	1.48	3.79
PERU 4.125 08/25/27	USD	112.256	2.12	2.03	5.74
PERU 8.75 11/21/33	USD	156.529	3.30	3.22	8.73
PERU 6.55 03/14/37	USD	136.557	3.57	3.50	10.57
PERU 5.625 11/18/2050	USD	133.632	3.77	3.71	16.42
CHILE 2.25 10/30/22	USD	102.717	0.65	0.41	1.55
CHILE 3.125 01/21/26	USD	107.944	1.46	1.36	4.50
CHILE 3.625 10/30/42	USD	105.863	3.26	3.23	15.38
COLOM 11.85 03/09/28	USD	158.544	2.72	2.46	5.34
COLOM 10.375 01/28/33	USD	155.325	4.45	4.24	7.92
COLOM 7.375 09/18/37	USD	132.955	4.56	4.47	10.65
COLOM 6.125 01/18/41	USD	119.804	4.63	4.56	12.33
MEX 4 10/02/23	USD	119.804	4.626	4.556	12.33
MEX5.55 01/45	USD	116.299	4.46	4.41	14.09



Source: Bloomberg

Equity

Largest gains	Exchange	Currency	Price	▲%	Largest losses	Exchange	Currency	Price	▼%
GRUPO F BANORT-O	Mexico	MXN	117.63	4.64	SOUTHERN COPPER	Peru	USD	65.5	-5.48
BOLSA MEXICANA	Mexico	MXN	42.13	2.81	BANCO SANTANDER	Chile	CLP	44.7	-3.91
ALFA SAB-A	Mexico	MXN	11.97	2.13	AERO DEL SURES-B	Mexico	MXN	344.71	-3.60
ORBIA ADVANCE CO	Mexico	MXN	54.60	2.00	BUENAVENTURA-ADF	Peru	USD	10.14	-3.43
WALMART DE MEXIC	Mexico	MXN	65.48	1.87	ENTEL	Chile	CLP	4460	-3.25

Per Turnover	Exchange	Amount (US\$)	Per Volume	Exchange	Volume
WALMART DE MEXIC	Mexico	48,513,967	ITAU CORPBANCA	Chile	408,764,096
AMERICA MOVIL-L	Mexico	47,255,291	BANCO SANTANDER	Chile	225,242,651
GRUPO MEXICO-B	Mexico	41,615,910	ENEL AMERICAS SA	Chile	154,849,642
GRUPO F BANORT-O	Mexico	38,693,416	ENEL CHILE SA	Chile	125,972,328
ENEL AMERICAS SA	Chile	25,505,494	BANCO DE CHILE	Chile	69,300,309

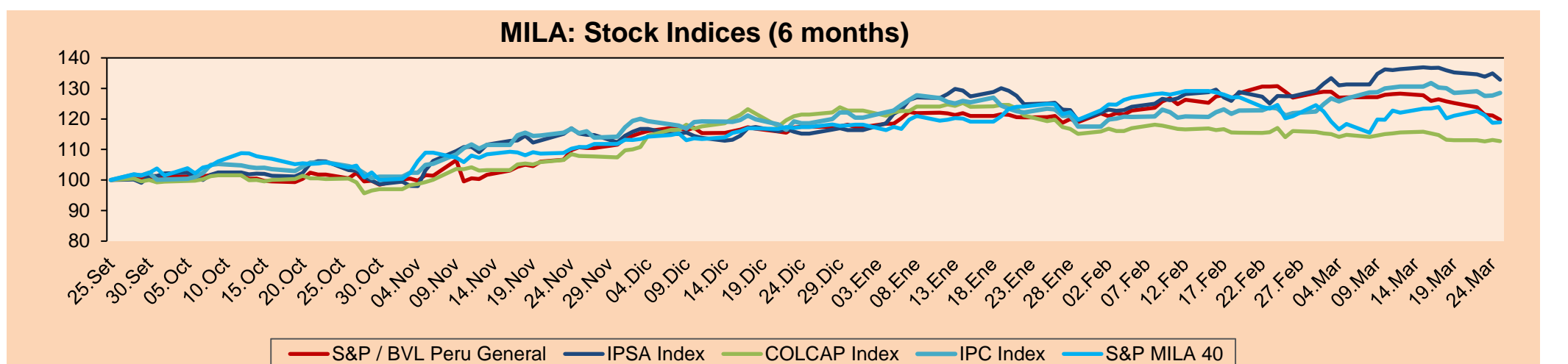
MILA

Peru: The General Index of BVL ended today's session with a negative result of -0.15%. The index maintains a positive annual cumulative trend of +3.24% in local currency, while the dollar-adjusted performance amounted to +0.31%. Then, the S&P / BVL Peru SEL varied by -0.59% while the S&P / BVL LIMA 25 by -0.40%. The spot PEN reached 5 / 3.7226. Headline: Moody's upgrades outlook for banks in Peru and keeps Chile and Mexico on negative

Chile: The IPSA index ended the day with a positive return of +0.82%. The most benefited sectors of the day were Consumer Staples (+2.43%) and Real Estate (+2.09%). The best performing stocks were Plaza SA (+3.88%) and Inversiones La Construcción SA (+2.81%). Headline: Merkel backs away from strict Easter Week confinement and accepts her "mistake"

Colombia: The COLCAP index closed today with a positive return of +0.04%. The sectors that benefited the most during the day were Communication services (+3.22%) and Non basic consumer products (+2.44%). The best performing stocks were Empresa de Telecomunicaciones (+3.22%) and Organización Terpel SA (+2.44%). Headline: Colombia's tax reform could negatively affect corporate credit, warns Fitch

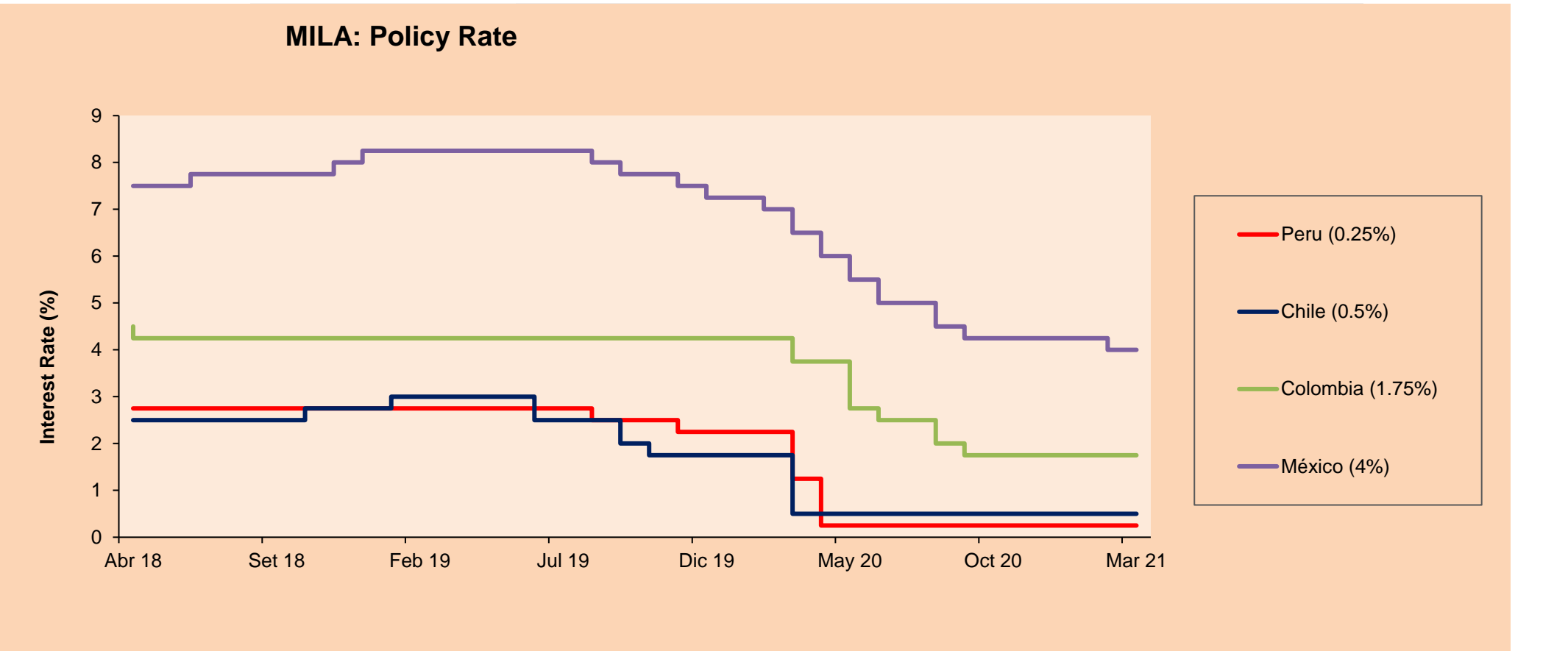
Mexico: The IPC index closed the day with a positive performance of +0.09%. The sectors that benefited the most during the day were Real Estate (+2.78%) and Utilities (+1.46%). The best performing stocks were Corp. Inmobiliaria Vesta SAB de CV (+2.78%) and Wal-Mart de Mexico SAB de CV (+2.47%). Headline: Inflation accelerates strongly in the first half of March and exceeds the central bank's range



Base: 28/09/20=100
Source: Bloomberg

ETFs

ETFs	Curr.	Close	1D	5D	30 D	YTD	Exchange
▼ iShares MSCI All Peru Caped Index Fund	USD	33.64	-0.77%	-5.93%	-13.68%	-3.00%	NYSE Arca
▼ iShares MSCI All Chile Caped Index Fund	USD	32.99	-1.14%	-3.65%	1.10%	9.20%	Cboe BZX
▲ Global X MSCI Colombia	USD	10.11	-1.37%	-2.88%	-2.46%	-11.00%	NYSE Arca
▲ iShares MSCI Mexico Capped	USD	43.38	1.78%	-2.17%	3.51%	0.91%	NYSE Arca
▲ iShares MSCI Emerging Markets	USD	51.92	0.46%	-2.81%	-7.43%	0.48%	NYSE Arca
▲ Vanguard FTSE Emerging Markets	USD	50.64	0.16%	-3.16%	-7.56%	1.06%	NYSE Arca
▲ iShares Core MSCI Emerging Markets	USD	62.71	0.48%	-2.76%	-6.99%	1.08%	NYSE Arca
▼ iShares JP Morgan Emerging Markets Bonds	USD	61.77	-0.06%	-1.44%	-3.47%	1.13%	Cboe BZX
▼ Morgan Stanley Emerging Markets Domestic	USD	5.93	-1.00%	0.17%	-2.95%	-5.72%	New York

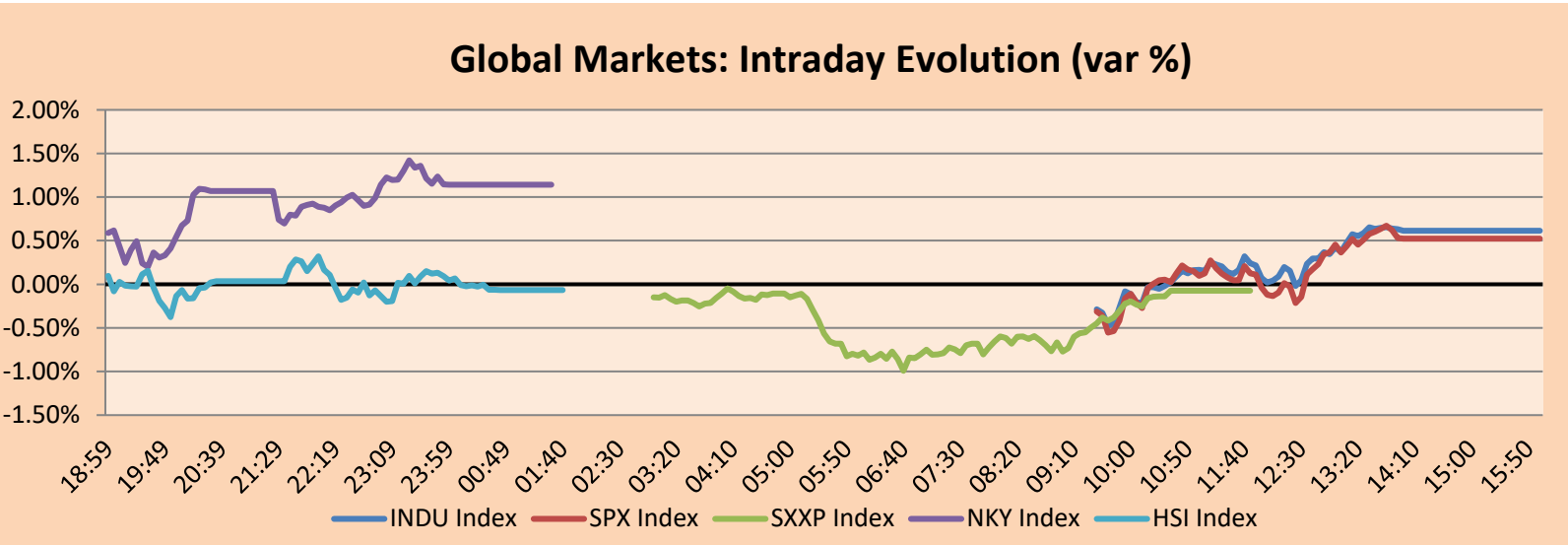


Source: Bloomberg

WORLD

Main Indices	Close	1 D*	5 D*	1 M*	YTD*	Market Cap. (US\$ Mill.)
▲ Dow Jones (USA)	32,619.48	0.62%	-0.74%	6.92%	8.06%	9,870,220
▲ Standard & Poor's 500 (EEUU)	3,909.52	0.52%	-0.15%	4.29%	5.82%	35,131,410
▲ NASDAQ Composite (USA)	12,977.68	0.12%	-1.06%	-0.41%	1.94%	21,502,260
▼ Stoxx EUROPE 600 (Europe)	423.08	-0.07%	-0.82%	5.42%	6.99%	9,956,636
▲ DAX (Germany)	14,621.36	0.08%	-1.04%	6.98%	7.51%	1,141,663
▼ FTSE 100 (United Kingdom)	6,674.83	-0.57%	-1.55%	3.97%	4.34%	1,417,194
▼ CAC 40 (France)	5,952.41	0.09%	-1.82%	5.01%	7.88%	1,659,409
▼ IBEX 35 (Spain)	8,409.50	-0.41%	-2.49%	3.32%	5.26%	476,826
▼ MSCI AC Asia Pacific Index	202.11	-0.05%	-3.69%	-0.87%	2.43%	25,825,725
▼ HANG SENG (Hong kong)	27,899.61	-0.07%	-5.12%	-2.22%	4.06%	4,301,106
▼ SHANGHAI SE Comp. (China)	3,363.59	-0.10%	-2.87%	-2.59%	-1.58%	6,430,799
▲ NIKKEI 225 (Japan)	28,729.88	1.14%	-4.92%	0.73%	6.31%	4,058,706
▲ S&P / ASX 200 (Australia)	6,790.56	0.17%	0.66%	2.26%	3.60%	1,658,907
▲ KOSPI (South Korea)	3,008.33	0.66%	-1.18%	0.93%	5.83%	1,802,403

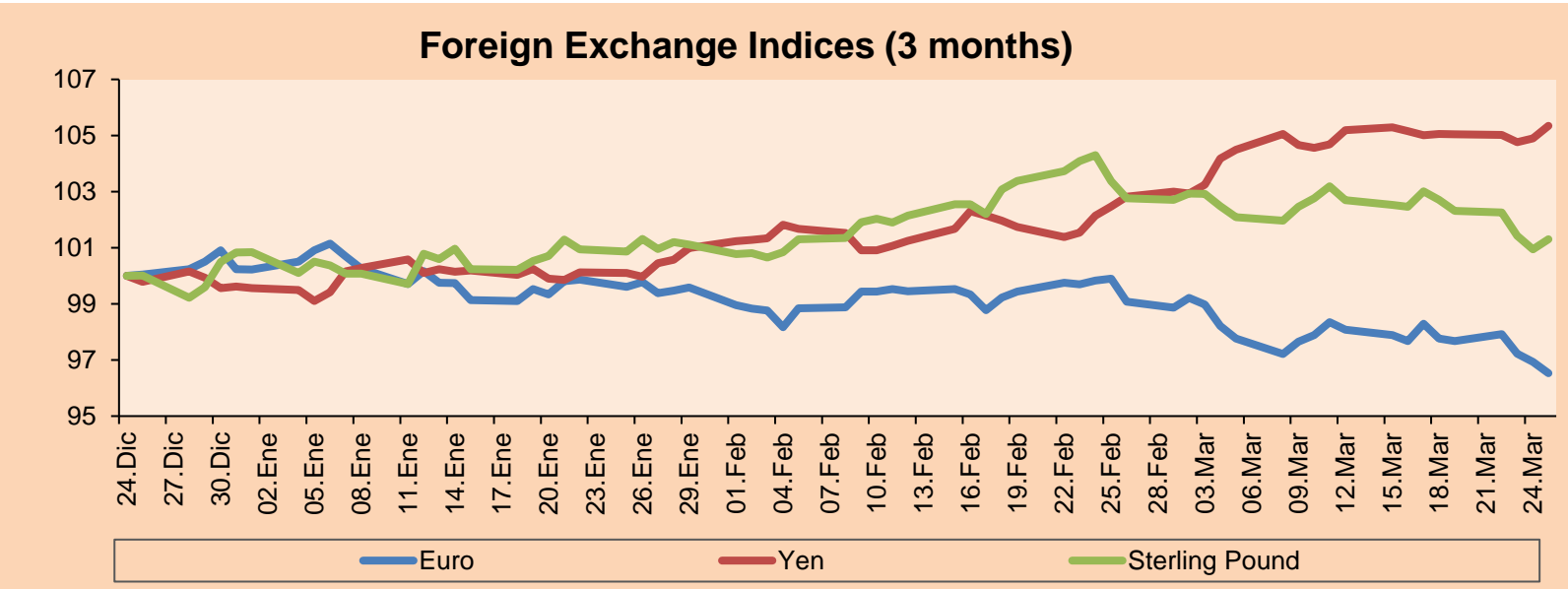
*Legend: Variation 1D: 1 Day; 5D: 5 Days; 1M: 1 Month; YTD: Var.% 12/31/20 to date



Source: Bloomberg

Currency	Price	1 D*	5 D*	1 M*	YTD*
▼ Euro	1.1764	-0.41%	-1.27%	-3.18%	-3.70%
▲ Yen	109.1900	0.42%	0.28%	3.74%	5.75%
▲ Sterling Pound	1.3734	0.35%	-1.37%	-2.69%	0.47%
▲ Yuan	6.5463	0.33%	0.61%	1.23%	0.29%
▲ Hong Kong Dollar	7.7685	0.01%	0.05%	0.19%	0.20%
▲ Brazilian Real	5.6483	0.46%	1.56%	3.80%	8.65%
▲ Argentine Peso	91.7749	0.15%	0.53%	2.50%	9.07%

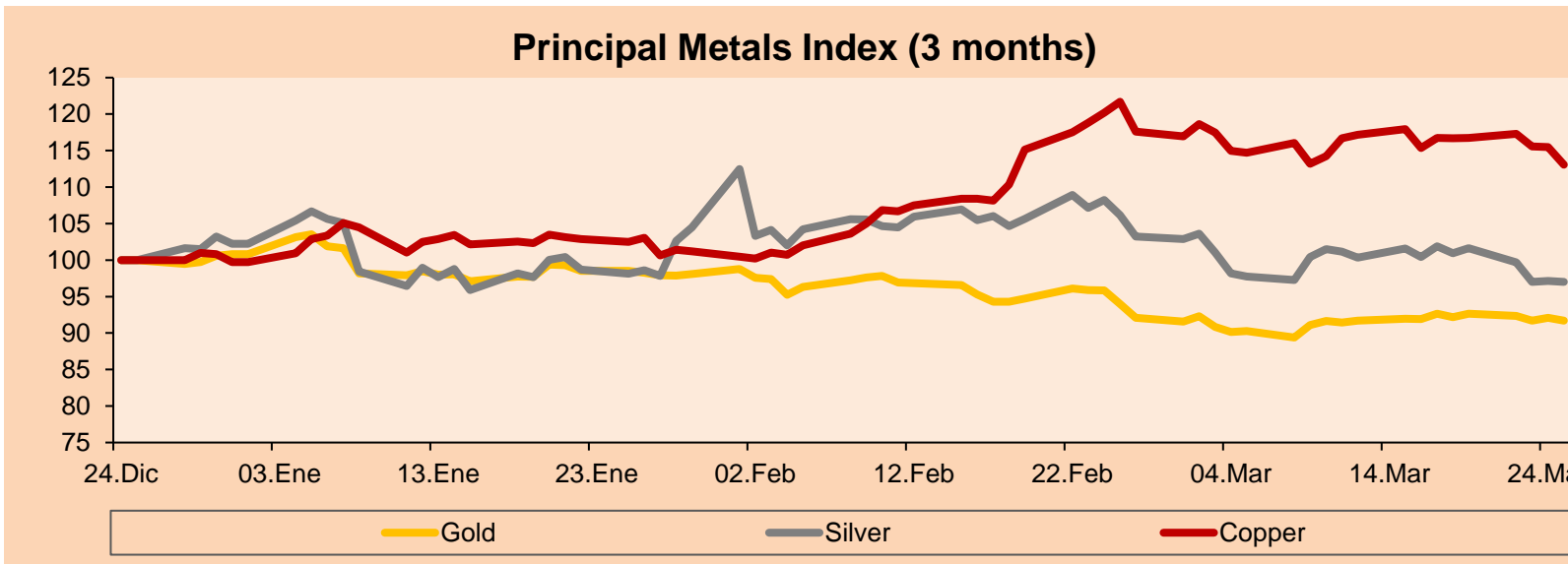
*Legend: Variation 1D: 1 Day; 5D: 5 Days; 1M: 1 Month; YTD: Var.% 12/31/20 to date



Base: 24/12/20=100
Source: Bloomberg

Commodities	Close	1 D*	5 D*	1 M*	YTD*
▼ Oro (US\$ Oz. T) (LME)	1,726.93	-0.45%	-0.55%	-4.36%	-9.03%
▼ Plata (US\$ Oz. T) (LME)	25.06	-0.13%	-3.88%	-9.44%	-5.08%
▼ Cobre (US\$ TM) (LME)	8,785.50	-2.09%	-3.11%	-4.83%	13.38%
▼ Zinc (US\$ TM) (LME)	2,756.25	-1.07%	-0.84%	-2.96%	0.99%
▼ Petróleo WTI (US\$ Barril) (NYM)	58.56	-4.28%	-2.50%	-4.67%	20.27%
▲ Estaño (US\$ TM) (LME)	27,467.00	2.15%	-3.42%	-2.84%	33.70%
▼ Plomo (US\$ TM) (LME)	1,895.35	-0.86%	-0.17%	-9.79%	-4.07%
▼ Azúcar #11 (US\$ Libra) (NYB-ICE)	15.09	-3.45%	-5.03%	-11.29%	2.79%
▲ Cacao (US\$ TM) (NYB-ICE)	2,456.00	0.86%	-3.38%	-1.72%	-3.12%
▲ Café Arábica (US\$ TM) (NYB-ICE)	126.60	0.08%	-2.58%	-8.46%	-2.73%

*Leyenda: Variación 1D: 1 Día; 5D: 5 Días; 1M: 1 Mes; YTD: Var.% 31/12/20 a la fecha



Base: 24/12/20=100
Source: Bloomberg

Equity

Germany (Stocks from DAX Index)

Largest gains	Curr.	Price	▲ %	Exchange	Largest losses	Curr.	Price	▼ %	Exchange
VOW3 GY	EUR	227.7	4.04	Xetra	DWNI GY	EUR	38.94	-3.64	Xetra
HEN3 GY	EUR	95.52	1.62	Xetra	DBK GY	EUR	107.4	-1.69	Xetra
FME GY	EUR	62.4	1.46	Xetra	VNA GY	EUR	55.4	-1.07	Xetra
LIN GY	EUR	232	1.31	Xetra					

Europe (Stocks from STOXX EUROPE 600)

Largest gains	Curr.	Price	▲ %	Exchange	Largest losses	Curr.	Price	▼ %	Exchange
VOW3 GY	EUR	227.7	4.04	Xetra	INPST NA	EUR	14.264	-8.56	EN Amsterdam
PAH3 GY	EUR	87.94	3.85	Xetra	SHBA SS	SEK	94.42	-6.65	Stockholm
HER IM	EUR	3.28	3.40	Borsa Italiana	ADS GY	EUR	261.8	-6.10	Xetra
PUB FP	EUR	52.08	3.25	EN Paris	AT1 GY	EUR	5.874	-5.59	Xetra

Global Overview:

United States:

US markets closed trading with slightly positive returns, posting a rally late in the session as investors turned to stocks that would benefit from economic growth. In economic data, jobless claims showed a one-year low of 684,000 the previous week, indicating that the country's economy is very close to a stronger expansion as the public health outlook improves, according to Reuters. This result exceeded estimates of 730,000. In markets, the turnaround from growth stocks to value stocks continues. Thus, the value stocks + 1.2% were again located above those of growth -0.1%. This despite the fact that the companies Apple Inc + 0.4% and Tesla + 1.6% led the rise. Regarding the current situation, Tim Ghriskey of Inverness Counsel commented that "it is a very confusing stock market, there is no real leadership. One day cyclicals are in favor, the next day tech-plus is in favor". Regarding fixed income, the rate of the Treasury note rose to 1.6297%. Thus, the DJIA + 0.62%, S&P 500 + 0.52% and NASDAQ + 0.12% finished with gains.

Europe:

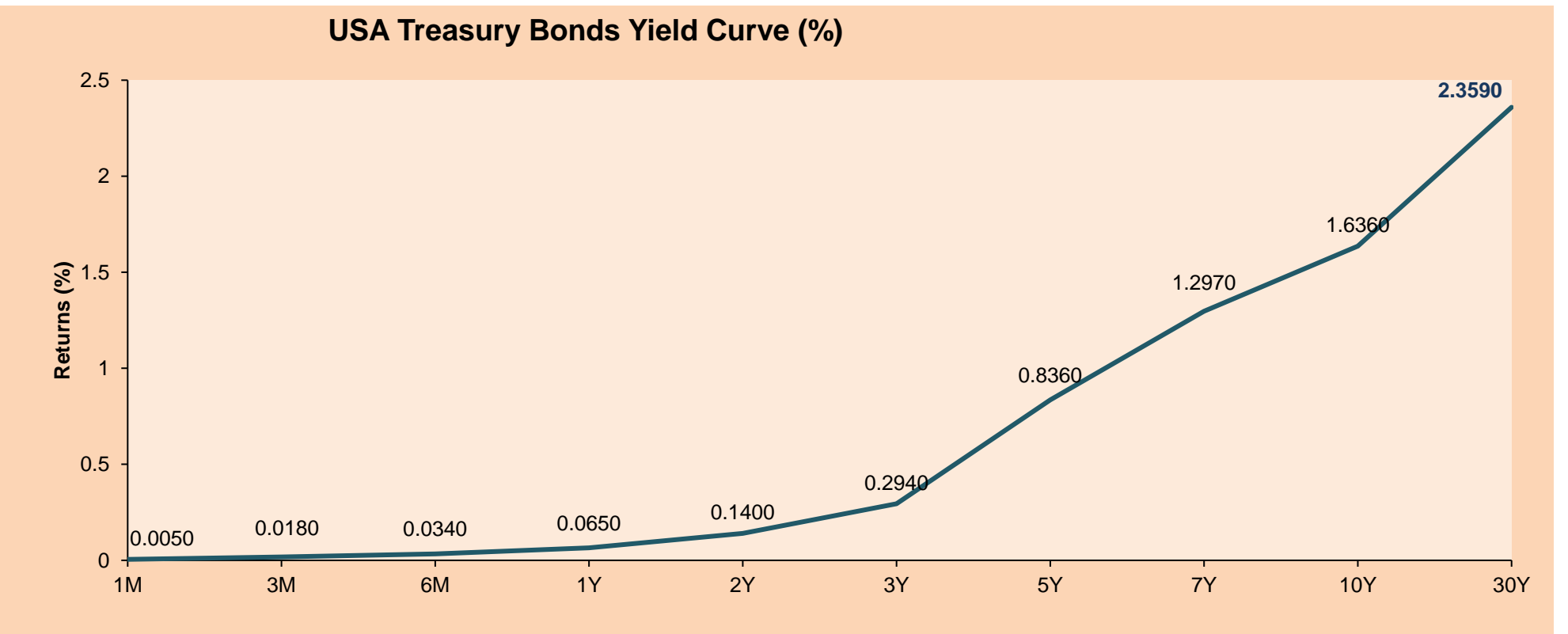
European markets ended the negotiations with mixed results, driven by concerns regarding economic growth and a new round of restrictions on the coronavirus in the Eurozone and regulations on Chinese stocks. The pan-European index fell back from 13-month highs last week when a new wave of coronavirus infection and a new regional lockdown overshadowed a recovery in business activity in March. Gains in defensive sectors such as utilities, telecommunications and food and beverages, which tend to decouple from the business cycle, offered some support to the market. Likewise, Chinese tech stocks took a big dip as concerns arose that they would wind up off US exchanges. In corporate stocks, Cineworld fell -7.59% after reporting a loss of \$ 3 billion for 2020 and triggering an increase in the debt budget, while H&M ended at -1.84% after at least one online retailer Chinese appeared to abandon its products following social media attacks on the Swedish company for saying it was "deeply concerned" by reports of forced labor in Xinjiang in China. Thus, the STOXX 600 -0.07%, CAC 40 + 0.09%, FTSE 100 -0.57% and DAX + 0.08% closed with mixed returns, among other indices.

Asia:

Asian markets ended today's session mixed after technology stocks fell following Wednesday's selloff on Wall Street. The pressure on tech stocks came as the U.S. Securities and Exchange Commission (SEC) announced new measures that would eliminate the stock price of technology stocks. (SEC) announced new measures that would delist foreign companies from the U.S. stock market if they fail to meet the country's auditing standards. In China, gains in financial and consumer stocks offset losses in technology stocks. Alex Wong, director of Ample Finance Group, said that "investors are overreacting to the SEC news." He added that "the move will have little impact on the territory." In Japan, Japanese stocks closed higher as investors rallied cyclical stocks. In South Korea, the Kospi posted its first gain in five days on hopes of a faster economic rebound. Finally, in Australia, healthcare stocks posted gains as exports rose on the back of a weaker Australian dollar. Thus, the Shanghai Composite -0.10%, Shenzhen -0.02%, Hang Seng -0.07%, Nikkei +1.14%, S&P/ASX 200 +0.17% and Kospi Composite +0.40% closed mixed.

ETFs

ETFs	Curr.	Close	1D	5D	30 D	YTD	Exchange
SPDR S&P 500 ETF TRUST	USD	389.70	0.56%	-0.45%	0.57%	4.23%	NYSE Arca
ISHARES MSCI EMERGING MARKET	USD	51.92	0.46%	-2.81%	-7.43%	0.48%	NYSE Arca
ISHARES IBOXX HIGH YLD CORP	USD	86.66	0.17%	1.08%	-0.89%	-0.73%	NYSE Arca
FINANCIAL SELECT SECTOR SPDR	USD	33.84	1.68%	-2.25%	2.83%	14.79%	NYSE Arca
VANECK GOLD MINERS	USD	32.24	-0.19%	-4.10%	-3.59%	-10.49%	NYSE Arca
ISHARES RUSSELL 2000 ETF	USD	216.66	2.18%	-3.81%	-2.30%	10.51%	NYSE Arca
SPDR GOLD SHARES	USD	161.78	-0.36%	-0.48%	-4.34%	-9.30%	NYSE Arca
ISHARES 20+ YEAR TREASURY BO	USD	137.14	-0.79%	2.40%	-3.27%	-13.05%	NASDAQ GM
SPDR GOLD TRUST SERIES 1	USD	311.33	-0.17%	-0.23%	-3.16%	-0.77%	NASDAQ GM
ISHARES NASDAQ BIOTECHNOLOGY	USD	148.68	0.93%	-3.00%	-7.00%	-1.85%	NASDAQ GM
ENERGY SELECT SECTOR SPDR	USD	49.21	0.37%	-0.63%	1.32%	29.84%	NYSE Arca
PROSHARES ULTRA VIX ST FUTUR	USD	6.28	-4.27%	-12.04%	-28.56%	-41.03%	Cboe BZX
UNITED STATES OIL FUND LP	USD	39.89	-3.76%	-1.43%	-4.16%	20.84%	NYSE Arca
ISHARES MSCI BRAZIL ETF	USD	32.43	0.93%	-2.99%	-5.67%	-12.52%	NYSE Arca
SPDR S&P OIL & GAS EXP & PR	USD	80.81	1.70%	-0.97%	-1.03%	38.14%	NYSE Arca
UTILITIES SELECT SECTOR SPDR	USD	63.26	1.07%	1.98%	4.20%	0.89%	NYSE Arca
ISHARES US REAL ESTATE ETF	USD	90.73	0.33%	-0.46%	1.10%	5.93%	NYSE Arca
SPDR S&P BIOTECH ETF	USD	135.21	2.88%	-3.76%	-10.36%	-3.96%	NYSE Arca
ISHARES IBOXX INVESTMENT GRA	USD	129.71	-0.12%	0.99%	-2.06%	-6.10%	NYSE Arca
ISHARES JP MORGAN USD EMERGI	USD	109.22	-0.15%	0.23%	-1.92%	-5.77%	NASDAQ GM
REAL ESTATE SELECT SECT SPDR	USD	38.96	0.85%	-0.51%	1.33%	6.56%	NYSE Arca
ISHARES CHINA LARGE-CAP ETF	USD	45.34	0.51%	-5.50%	-12.49%	-2.35%	NYSE Arca
CONSUMER STAPLES SPDR	USD	67.39	0.97%	1.87%	3.53%	-0.09%	NYSE Arca
VANECK JR GOLD MINERS	USD	45.23	0.09%	-5.34%	-8.33%	-16.61%	NYSE Arca
SPDR BBG BARC HIGH YIELD BND	USD	108.12	0.08%	0.99%	-1.08%	-0.75%	NYSE Arca
VANGUARD REAL ESTATE ETF	USD	90.88	0.43%	-0.94%	0.73%	7.01%	NYSE Arca
GRAYSCALE BITCOIN TRUST BTC	USD	44.50	-1.11%	-12.42%	-2.92%	39.06%	OTC US



Source: Bloomberg

LIMA

Stocks

Ticker	Currency	Price	1D*	5D*	30D*	YTD*	Frequency	Volume (US\$)	Beta	Dividend Yield (%)	Price Earning	Market Cap. (M US\$)	Economic Sector*	Index Weight
▼ ALICORC1 PE**	S/.	7.89	-0.06%	0.66%	-0.83%	-0.82%	100.00%	34,407	0.67	3.17	20.18	1,801.96	Industrial	3.53%
ATACOB1 PE**	S/.	0.15	0.00%	-3.80%	-10.59%	10.14%	75.00%	1,044	1.09	0.00	-	38.46	Mining	1.02%
- BACKUS1 PE**	S/.	22.60	0.00%	-2.80%	-1.74%	12.16%	100.00%	3,437	0.54	1.55	10.84	8,410.60	Industrial	0.82%
▼ BAP PE**	US\$	137.75	-1.25%	-6.61%	-15.80%	-14.23%	100.00%	1,174,960	1.65	6.39	-	13,001.16	Diverse	5.82%
▼ BVN PE**	US\$	10.14	-3.43%	-9.30%	-11.44%	-15.50%	100.00%	222,171	1.17	0.00	-	2,794.93	Mining	5.88%
▲ CASAGRC1 PE**	S/.	5.98	8.73%	3.10%	-2.76%	25.89%	75.00%	36,451	0.55	3.78	10.83	134.88	Agricultural	1.31%
▲ BBVAC1 PE**	S/.	2.45	1.24%	0.82%	0.00%	12.90%	100.00%	22,621	0.66	3.52	25.64	4,283.43	Finance	2.85%
▲ CORARE1 PE**	S/.	1.13	0.89%	0.00%	-0.88%	26.97%	100.00%	61,135	0.57	6.18	6.86	408.85	Industrial	1.72%
- CPACASC1 PE**	S/.	5.90	0.00%	-0.34%	-4.07%	11.32%	100.00%	47,401	0.59	3.90	42.14	721.43	Industrial	2.38%
▼ CVERDEC1 PE**	US\$	24.99	-2.80%	-4.51%	-9.13%	19.46%	100.00%	447,104	0.90	0.00	31.88	8,747.90	Mining	5.25%
- ENGEPEC1 PE**	S/.	2.64	0.00%	0.00%	6.45%	32.00%	90.00%	3,444	0.50	8.33	16.01	2,006.78	Public Services	1.44%
- ENDISPC1**	S/.	6.05	0.00%	0.00%	0.83%	12.04%	65.00%	6,853	0.48	0.00	14.19	1,034.49	Public Services	0.98%
▼ FERREYC1 PE**	S/.	2.18	-0.91%	-2.24%	4.81%	25.29%	100.00%	323,835	0.57	3.52	14.37	569.55	Diverse	4.90%
▲ AENZAC1 PE**	S/.	1.70	5.59%	-1.73%	-1.16%	-2.30%	95.00%	70,150	0.81	0.00	-	396.91	Diverse	4.05%
▼ IFS PE**	US\$	28.25	-0.88%	-5.83%	-18.94%	-8.69%	100.00%	84,231	1.28	6.19	31.82	3,261.40	Diverse	7.22%
▲ INRETC1 PE**	US\$	43.00	0.70%	-2.27%	-4.44%	9.69%	100.00%	505,040	0.64	1.31	54.52	4,420.71	Diverse	5.28%
▲ LUSURC1 PE**	S/.	13.00	6.21%	-3.35%	-43.97%	-49.02%	90.00%	107,239	0.56	5.37	13.59	1,695.10	Public Services	1.81%
▼ MINSUR1 PE**	S/.	2.74	-1.08%	-2.84%	-13.02%	48.11%	95.00%	140,232	0.79	0.00	72.50	2,115.26	Mining	3.09%
- PML PE**	US\$	0.16	0.00%	3.33%	-2.52%	46.23%	65.00%	10,090	1.44	0.00	-	40.95	Mining	2.12%
▼ RELAPAC1 PE**	S/.	0.13	-5.22%	-5.93%	-1.55%	84.06%	95.00%	83,034	0.47	0.00	-	282.91	Industrial	2.12%
▼ SCCO PE**	US\$	65.50	-5.48%	-11.86%	-17.09%	-0.61%	90.00%	139,141	0.96	2.60	31.84	50,636.30	Mining	2.14%
▲ SIDERC1 PE**	S/.	1.07	7.00%	4.90%	2.88%	25.88%	85.00%	53,147	0.80	25.88	13.07	351.82	Industrial	1.43%
- TV PE**	US\$	0.15	0.00%	-6.96%	-17.42%	0.00%	95.00%	2,426	1.48	0.00	-	145.40	Mining	2.93%
▼ UNACEMC1 PE**	S/.	1.69	-3.43%	-5.59%	-9.14%	9.03%	95.00%	79,125	0.81	0.77	36.14	822.77	Industrial	3.00%
▲ VOLCABC1 PE**	S/.	0.85	1.19%	1.19%	8.97%	63.46%	100.00%	1,233,206	0.86	0.00	-	927.86	Mining	5.90%
- NEXAPEC1 PE**	S/.	3.50	0.00%	-6.67%	-13.58%	23.67%	85.00%	17,450	1.12	0.00	-	1,239.07	Mining	1.56%

Quantity of shares: 26
Source: Bloomberg, Economática
* Bloomberg Industry Classification System
** PER is used in the stock market and original currency of the instrument
*Legend: Variation 1D: 1 Day; 5D: 5 Days, 1M: 1 Month; YTD: Var.% 12/31/20 to date

Up 8
Down 10
Hold 8

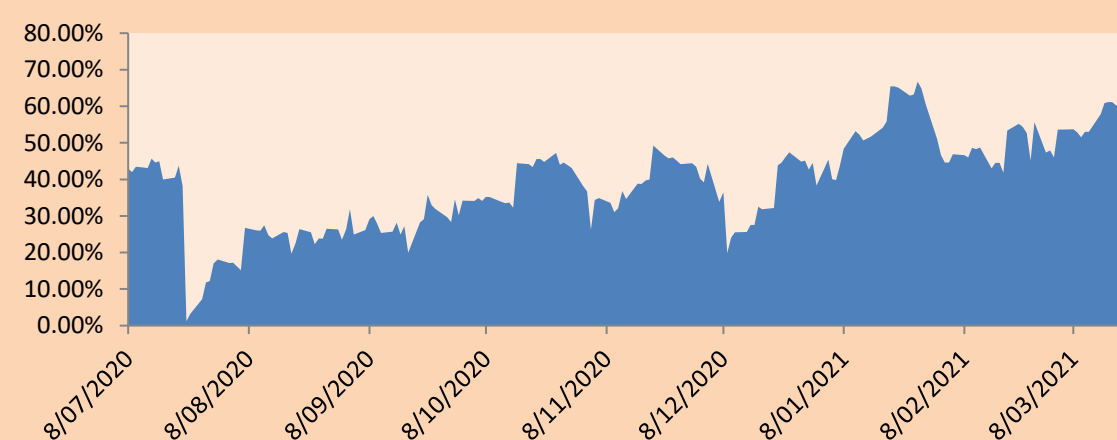
Sectorial Indices

	Close	1D*	5D*	30D*	YTD*	Beta
▼ S&P/BVLMining	404.88	-3.87%	-9.08%	-12.20%	3.83%	0.93
▲ S&P/BVLConsumer	1,220.87	0.56%	-1.28%	-2.57%	12.15%	0.41
▼ S&P/BVLIndustrials	216.39	-0.31%	-2.32%	-1.53%	13.55%	0.49
▼ S&P/BVLFinancials	930.16	-0.81%	-5.56%	-13.62%	-10.03%	1.76
▲ S&P/BVLConstruction	226.32	0.05%	-2.28%	-4.15%	8.22%	0.54
▲ S&P/BVLPublicSvcs	662.23	1.09%	1.09%	3.85%	7.84%	0.14
▲ S&P/BVLElectricUtil	646.50	1.09%	1.09%	3.84%	7.84%	0.14

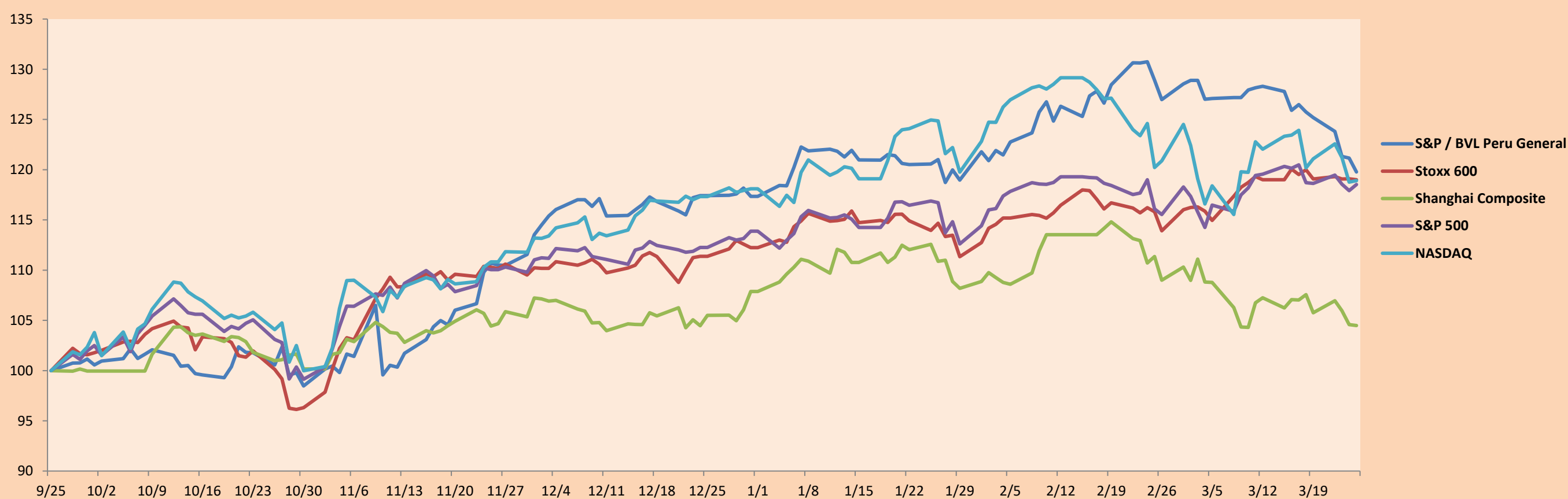
S&P/BVLConstructionTRPEN

*Legend: Variation 1D: 1 Day; 5D: 5 Days, 1M: 1 Month; YTD: Var.% 12/31/20 to date

Correlation Graph of Returns of Mining Index against Metallic Index of London (3 months)



Indices (6 months)



Base: 25/09/20=100
Source: Bloomberg

Capital Market Laboratory Coordinator: Economist Bruno Bellido
Collaboration: Piero Best, Maria Camarena, Alonso Stephen Hernández and Adrian Paredes
email: pulsobursatil@ulima.edu.pe
facebook: www.facebook.com/pulsobursatil.ul

SOVEREIGN RATING

RISK RATINGS

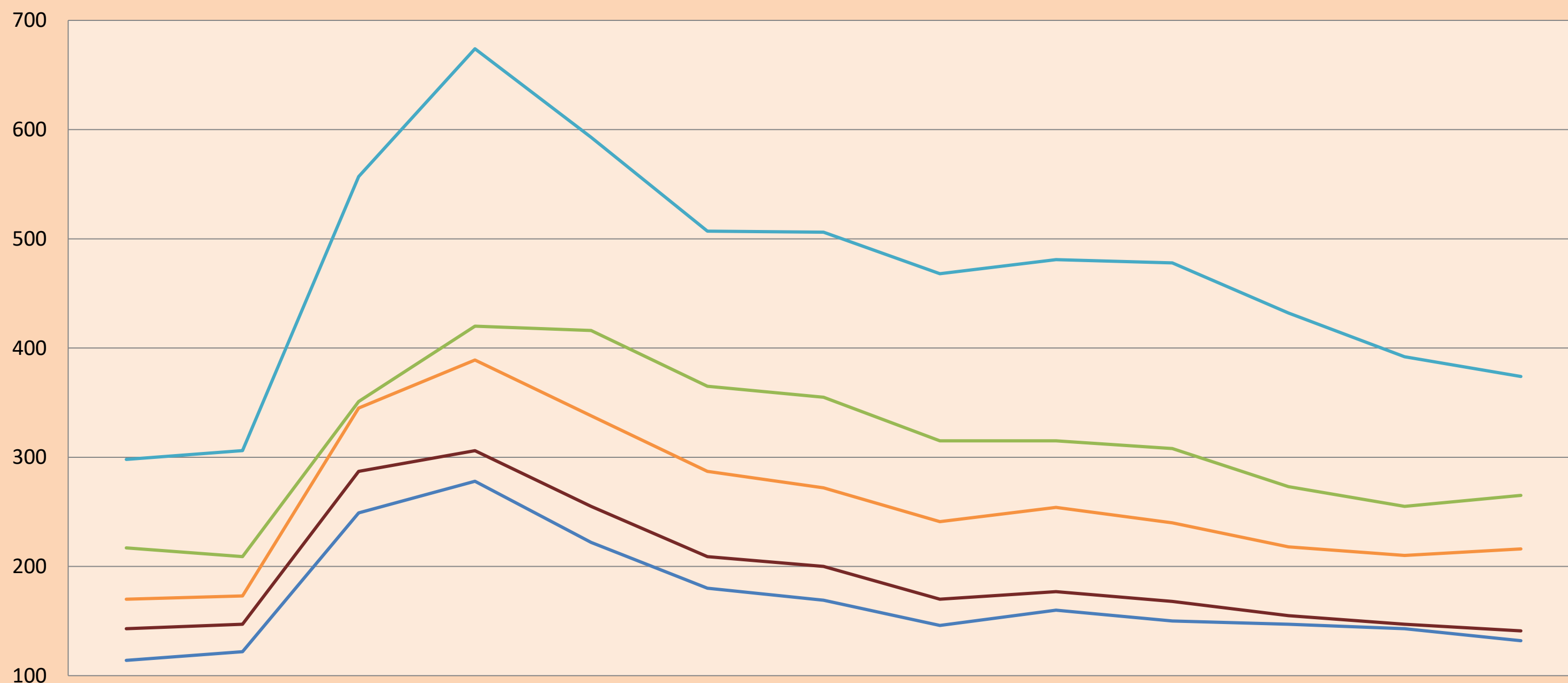
Moody's	S&P	Fitch	
Aaa	AAA	AAA	Prime
Aa1	AA+	AA+	High credit quality
Aa2	AA	AA	
Aa3	AA-	AA-	
A1	A+	A+	Medium-high grade, with low credit risk
A2	A	A	
A3	A-	A-	
Baa1	BBB+	BBB+	Moderate Credit Risk
Baa2	BBB	BBB	
Baa3	BBB-	BBB-	
Ba1	BB+	BB+	It has speculative elements and it is subject to substantial credit risk
Ba2	BB	BB	
Ba3	BB-	BB-	
B1	B+	B+	It is considered speculative and it has high credit risk
B2	B	B	
B3	B-	B-	
Caa1	CCC+	CCC	
Caa2	CCC	CCC	
Caa3	CCC-	CCC	
Ca	CC	CC	Very close to default or in default
C	C	CC	
C	D	DD	

Source: Bloomberg

Latin America Credit Rating			
Clasificadora de riesgo			
Country	Moody's	Fitch	S&P
Peru	A3	BBB+	BBB+
México	Ba2	BB-	BB-
Venezuela	C	WD	SD
Brazil	Ba2	BB-	BB-
Colombia	Baa2	BBB-	BBB-
Chile	A1	A-	A
Argentine	Ca	WD	CCC+
Panama	Baa2	BBB-	BBB

Source: Bloomberg

LATAM Country Risk (bps)



	Ene-20	Feb-20	Mar-20	Abr-20	May-20	Jun-20	Jul-20	Ago-20	Set-20	Oct-20	Nov-20	Dic-20	Ene-21
Perú	114	122	249	278	222	180	169	146	160	150	147	143	132
Brasil	217	209	351	420	416	365	355	315	315	308	273	255	265
México	298	306	557	674	593	507	506	468	481	478	432	392	374
Colombia	170	173	345	389	338	287	272	241	254	240	218	210	216
Chile	143	147	287	306	255	209	200	170	177	168	155	147	141

Source: BCRP

Capital Market Laboratory Coordinator: Economist Bruno Bellido
Collaboration: Piero Best, María Camarena, Alonso Stephen Hernández and Adrian Paredes
email: pulsobursatil@ulima.edu.pe
facebook: www.facebook.com/pulsobursatil.ul