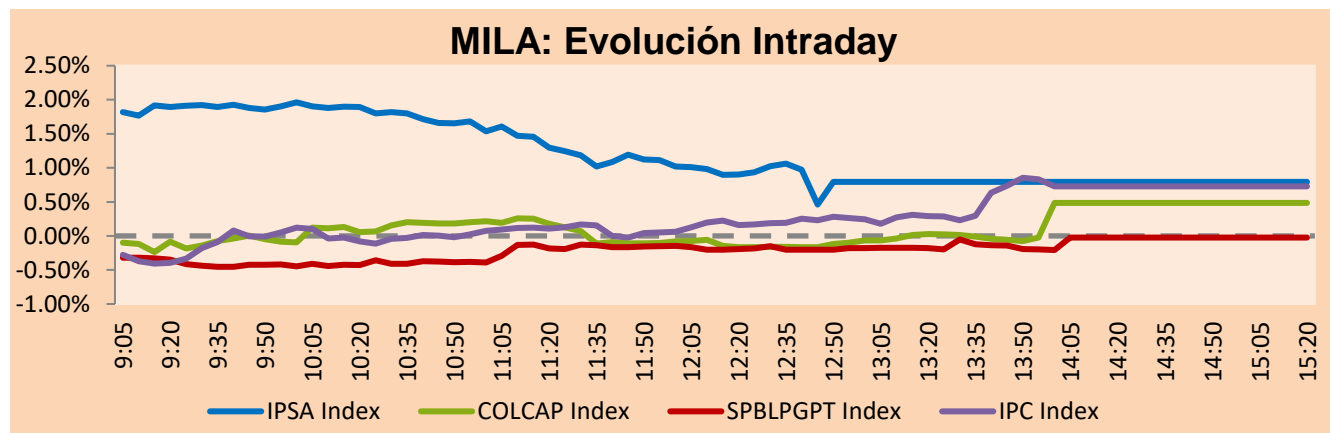


## MILA

Lima, March 29, 2021

Main Indexes	Close	1 D	5 D	1 M	YTD	Cap. Burs. (US\$ bill)
▲ IPSA (Chile)	4,916.69	1.28%	1.76%	7.51%	17.70%	133.59
▲ IGPA (Chile)	24,764.56	1.28%	1.75%	7.21%	17.88%	160.31
▼ COLSC (Colombia)	1,045.85	-0.42%	0.17%	-1.24%	-1.24%	5.34
▲ COLCAP (Colombia)	1,320.83	0.48%	-0.28%	-2.84%	-8.14%	78.48
▼ S&P/BVL (Perú)*	21,404.96	-0.02%	-2.56%	-4.99%	-2.80%	105.38
▼ S&P/BVL SEL (Perú)	572.15	-0.06%	-1.80%	-4.01%	3.76%	93.23
▲ S&P/BVL LIMA 25	28,799.14	0.07%	-1.43%	-2.17%	14.29%	104.40
▲ IPC (México)	47,747.36	0.78%	1.11%	7.07%	8.35%	294.67
▲ S&P MILA 40	540.53	0.41%	-2.61%	-0.02%	1.10%	6,076.50

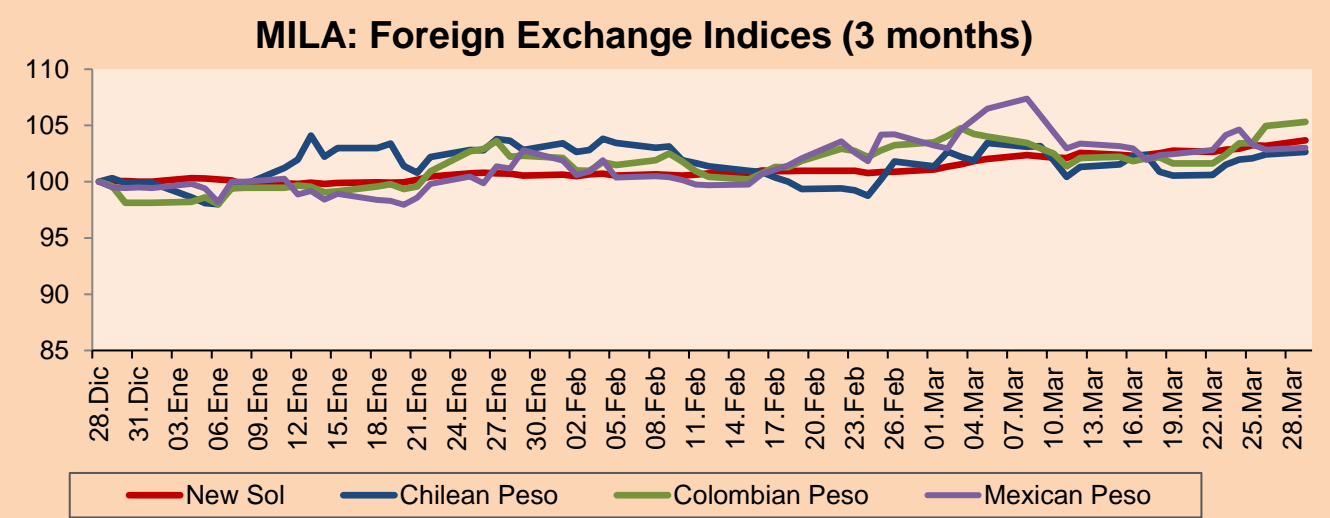
\*Legend: Variation 1D: 1 day; 5D: 5 days; 1M: 1 Month; YTD: Var% 12/31/20 to date



Source: Bloomberg

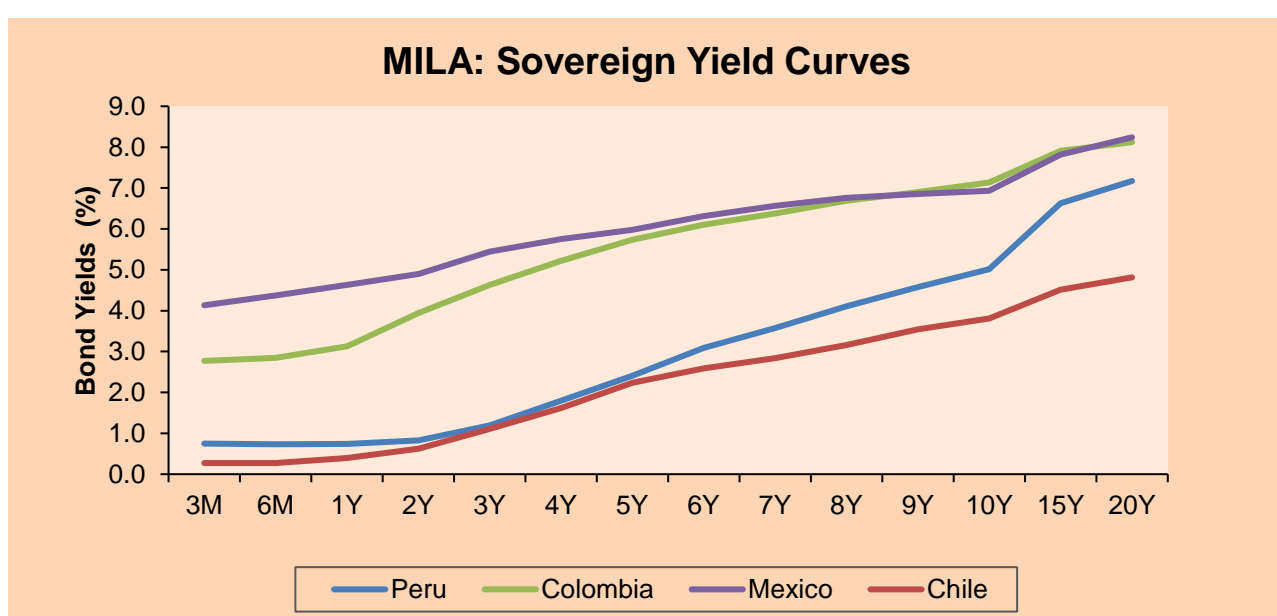
Currency	Price	1D*	5D*	30 D*	YTD*
▲ New Sol (PEN)	3,750.2	0.46%	1.00%	2.78%	3.65%
▲ Chilean Peso (CLP)	731.30	0.22%	2.03%	0.82%	2.74%
▲ Colombian Peso (COP)	3,680.71	0.35%	3.64%	2.01%	7.32%
▲ Mexican Peso (MXN)	20.62	0.18%	0.21%	-1.12%	3.55%

\*Legend: Variation 1D: 1 day; 5D: 5 days; 1M: 1 Month; YTD: Var% 12/31/20 to date



Base: 28/12/20=100  
Source: Bloomberg

Fixed Income	Currency	Price	Bid Yield (%)	Ask Yield (%)	Duration
PERU 7.35 07/21/25	USD	124.136	1.59	1.48	3.78
PERU 4.125 08/25/27	USD	112.171	2.13	2.04	5.74
PERU 8.75 11/21/33	USD	156.304	3.32	3.23	8.72
PERU 6.55 03/14/37	USD	136.131	3.60	3.53	10.56
PERU 5.625 11/18/2050	USD	133.127	3.79	3.73	16.38
CHILE 2.25 10/30/22	USD	102.699	0.66	0.42	1.55
CHILE 3.125 01/21/26	USD	107.805	1.49	1.39	4.50
CHILE 3.625 10/30/42	USD	105.167	3.31	3.27	15.34
COLOM 11.85 03/09/28	USD	158.412	2.72	2.48	5.34
COLOM 10.375 01/28/33	USD	151.619	4.75	4.55	7.89
COLOM 7.375 09/18/37	USD	132.046	4.62	4.54	10.62
COLOM 6.125 01/18/41	USD	118.337	4.73	4.66	12.26
MEX 4 10/02/23	USD	118.337	4.727	4.657	12.26
MEX5.55 01/45	USD	115.313	4.53	4.47	14.05



Source: Bloomberg

### Equity

Largest gains	Exchange	Currency	Price	▲%	Largest losses	Exchange	Currency	Price	▼%
GRUPO CARSO-A1	Mexico	MXN	58.10	4.27	WALMART DE MEXIC	Mexico	MXN	66.31	-5.20
PARQUE ARAUCO	Chile	CLP	1351.40	3.56	CREDICORP LTD	Peru	USD	137.5	-1.32
GRUPO BIMBO-A	Mexico	MXN	44.22	3.54	COLBUN SA	Chile	CLP	141.48	-1.17
ENEL CHILE SA	Chile	CLP	56.99	3.34	SOUTHERN COPPER	Peru	USD	68.02	-0.70
ARCA CONTINENTAL	Mexico	MXN	104.74	3.06	ISA SA	Colombia	COP	22200	-0.45

Per Turnover	Exchange	Amount (US\$)	Per Volume	Exchange	Volume
WALMART DE MEXIC	Mexico	56,742,172	ITAU CORPBANCA	Chile	555,154,478
GRUPO F BANORT-O	Mexico	39,944,237	BANCO SANTANDER	Chile	257,470,804
GRUPO MEXICO-B	Mexico	37,523,183	ENEL CHILE SA	Chile	205,256,426
AMERICA MOVIL-L	Mexico	36,906,329	ENEL AMERICAS SA	Chile	178,295,491
ENEL AMERICAS SA	Chile	29,987,023	BANCO DE CHILE	Chile	103,880,918

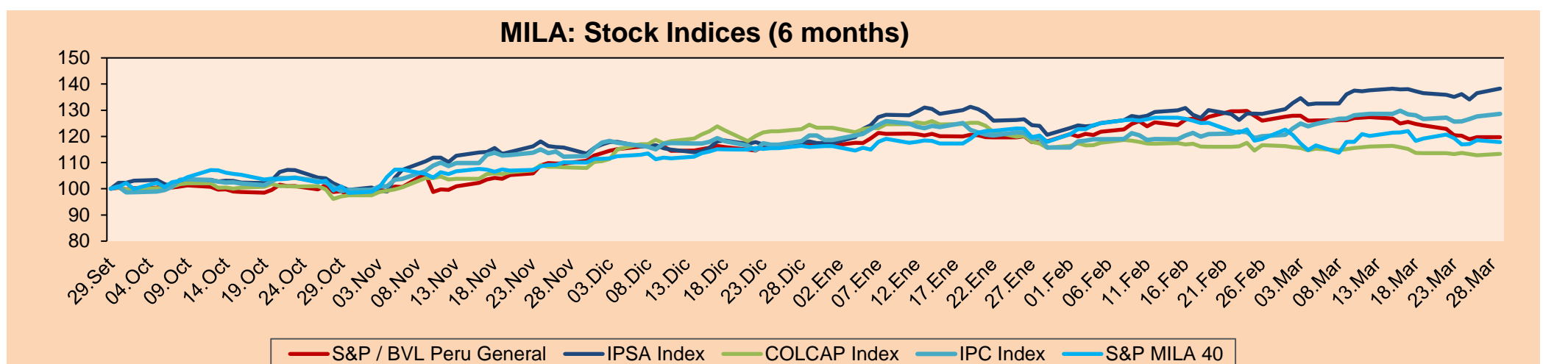
### MILA

Peru: The BVL General Index ended today's session with a negative result of -0.02%. The index maintains an annual cumulative positive trend of +2.80% in local currency, while the dollar-adjusted performance amounted to -0.82%. Then, the S&P / BVL Peru SEL varied by -0.06% while the S&P / BVL LIMA 25 by +0.07%. The spot PEN reached S/3.7502. Headline: Peru remains at the top of the second wave of the pandemic, according to experts.

Chile: The IPSA index ended the day with a positive return of +1.28%. The most benefited sectors of the day were Real Estate (+3.01%) and Information Technology (+2.50%). The best performing stocks were Ripley Corporación SA (+3.69%) and Parque Arauco SA (+3.56%). Headline: Chile's President will propose postponing the next local elections due to the increase in COVID-19 cases.

Colombia: The COLCAP index closed today with a positive return of +0.48%. The sectors with the highest gains during the day were Energy (+1.43%) and Materials (+0.53%). The best performing stocks were Corporación Financiera Colombia (+1.89%) and Ecopetrol SA (+2.63%). Headline: Colombia's Central Bank maintains its rate and increases GDP growth projection.

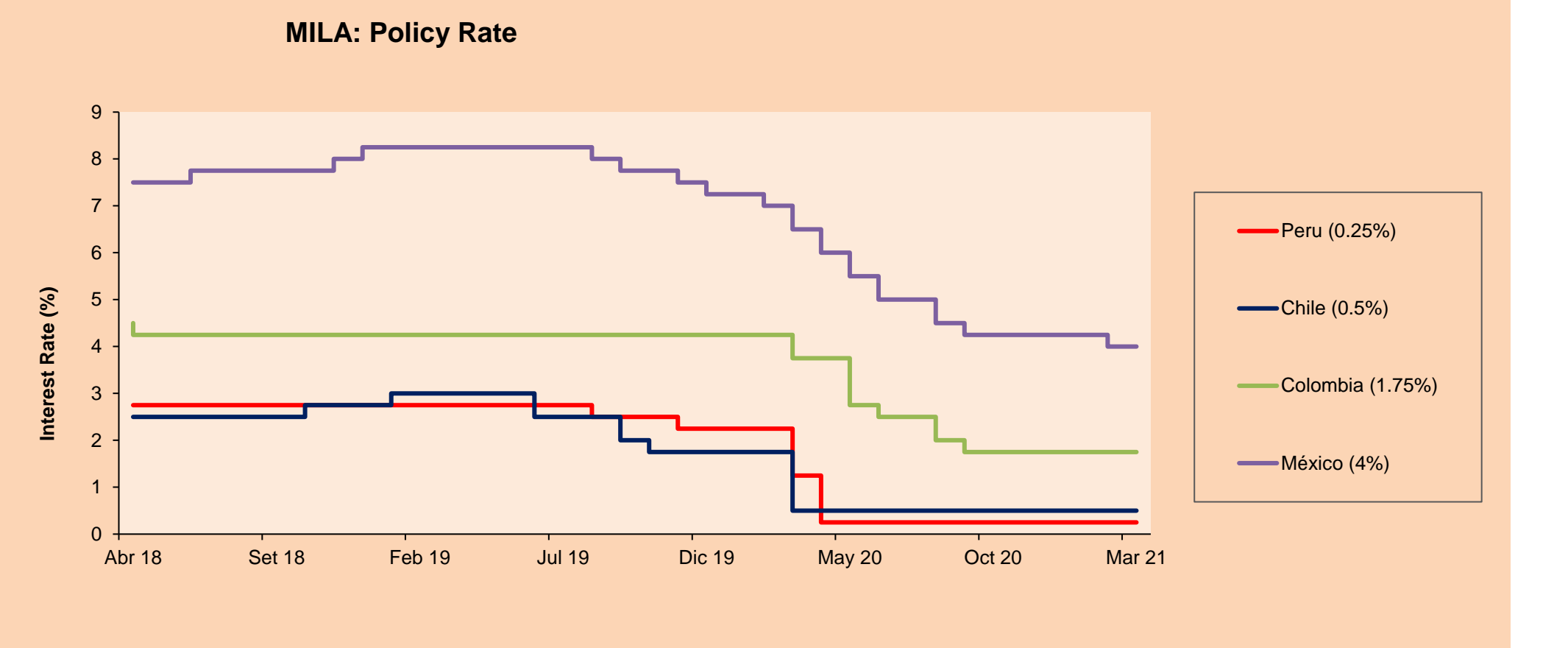
Mexico: The IPC index closed the day with a positive performance of +0.78%. The sectors that benefited the most during the day were Consumer Staples (+2.23%) and Industrials (+2.16%). The best performing stocks were Regional SAB de CV (+5.39%) and Telesites SAB de CV (+5.21%). Headline: Bank of Mexico maintains its key rate in light of higher inflation expectations.



Base: 30/09/20=100  
Source: Bloomberg

### ETFs

ETFs	Curr.	Close	1D	5D	30 D	YTD	Exchange
▼ iShares MSCI All Peru Caped Index Fund	USD	33.81	-1.60%	-4.41%	-8.79%	-2.51%	NYSE Arca
▲ iShares MSCI All Chile Caped Index Fund	USD	33.6	0.03%	-1.32%	6.97%	11.22%	Cboe BZX
▼ Global X MSCI Colombia	USD	10.06	-0.43%	-3.36%	0.10%	-11.44%	NYSE Arca
▲ iShares MSCI Mexico Capped	USD	44.19	0.36%	0.84%	8.68%	2.79%	NYSE Arca
▼ iShares MSCI Emerging Markets	USD	52.9	-0.69%	-1.89%	-1.54%	2.38%	NYSE Arca
▼ Vanguard FTSE Emerging Markets	USD	51.61	-0.56%	-1.94%	-1.68%	2.99%	NYSE Arca
▼ iShares Core MSCI Emerging Markets	USD	63.83	-0.64%	-1.86%	-1.39%	2.89%	NYSE Arca
▼ iShares JP Morgan Emerging Markets Bonds	USD	62.57	-0.41%	-0.87%	0.45%	2.44%	Cboe BZX
▲ Morgan Stanley Emerging Markets Domestic	USD	6	0.33%	0.84%	0.33%	-4.61%	New York



Source: Bloomberg

Capital Market Laboratory Coordinator: Economist Bruno Bellido  
Collaboration: Piero Best, Maria Camarena, Alonso Stephen Hernández and Adrian Paredes  
email: pulsobursatil@ulima.edu.pe  
facebook: www.facebook.com/pulsobursatil.ul

## WORLD

Main Indices	Close	1 D*	5 D*	1 M*	YTD*	Market Cap. (US\$ Mill.)
▲ Dow Jones (USA)	33,171.37	0.30%	1.34%	7.24%	8.38%	9,883,122
▼ Standard & Poor's 500 (EEUU)	3,971.09	-0.09%	0.77%	4.20%	5.72%	35,102,675
▼ NASDAQ Composite (USA)	13,059.65	-0.60%	-2.38%	-1.01%	1.33%	21,373,768
▲ Stoxx EUROPE 600 (Europe)	427.61	0.16%	0.81%	5.59%	7.16%	9,974,265
▲ DAX (Germany)	14,817.72	0.47%	1.10%	7.48%	8.01%	1,147,647
▼ FTSE 100 (United Kingdom)	6,736.17	-0.07%	0.15%	3.90%	4.27%	1,412,766
▼ CAC 40 (France)	6,015.51	0.45%	0.79%	5.48%	8.36%	1,666,153
▼ IBEX 35 (Spain)	8,492.10	-0.07%	1.78%	3.25%	5.18%	481,454
▲ MSCI AC Asia Pacific Index	205.15	0.18%	-1.36%	-0.69%	2.61%	25,868,391
▲ HANG SENG (Hong kong)	28,338.30	0.01%	-1.89%	-1.29%	5.05%	4,275,147
▲ SHANGHAI SE Comp. (China)	3,435.30	0.50%	-0.24%	-1.78%	-0.76%	6,445,304
▲ NIKKEI 225 (Japan)	29,384.52	0.71%	0.72%	1.40%	7.02%	4,050,925
▼ S&P / ASX 200 (Australia)	6,799.49	-0.36%	0.70%	0.98%	2.30%	1,655,136
▲ KOSPI (South Korea)	3,036.04	0.78%	1.11%	1.90%	6.84%	1,792,478

\*Legend: Variation 1D: 1 Day; 5D: 5 Days; 1M: 1 Month; YTD: Var.% 12/31/20 to date

## Equity

Germany (Stocks from DAX Index)

Largest gains	Curr.	Price	▲ %	Exchange	Largest losses	Curr.	Price	▼ %	Exchange
BMW GY	EUR	85.6	2.16	Xetra	DHER GY	EUR	108.2	-2.52	Xetra
DTE GY	EUR	17.135	1.75	Xetra	DWNI GY	EUR	39.46	-2.45	Xetra
SAP GY	EUR	104.3	1.38	Xetra	MTX GY	EUR	196.2	-0.76	Xetra
HEN3 GY	EUR	97.1	1.23	Xetra	IFX GY	EUR	34.88	-0.70	Xetra

Europe (Stocks from STOXX EUROPE 600)

Largest gains	Curr.	Price	▲ %	Exchange	Largest losses	Curr.	Price	▼ %	Exchange
CHR DC	DKK	575	4.81	Copenhagen	ITV LN	GBP	122.2	-4.19	Londres
TYRES FH	EUR	31.48	4.79	Helsinki	UBSG SE	CHF	14.535	-3.90	SIX Swiss Ex
CLNX SQ	EUR	46.68	4.69	Soc.Bol SIBE	TEF SQ	EUR	3.877	-3.72	Soc.Bol SIBE
AMBUB DC	DKK	281	3.58	Copenhagen	TRN LN	GBP	452.2	-3.66	Londres

## Global Overview:

### United States:

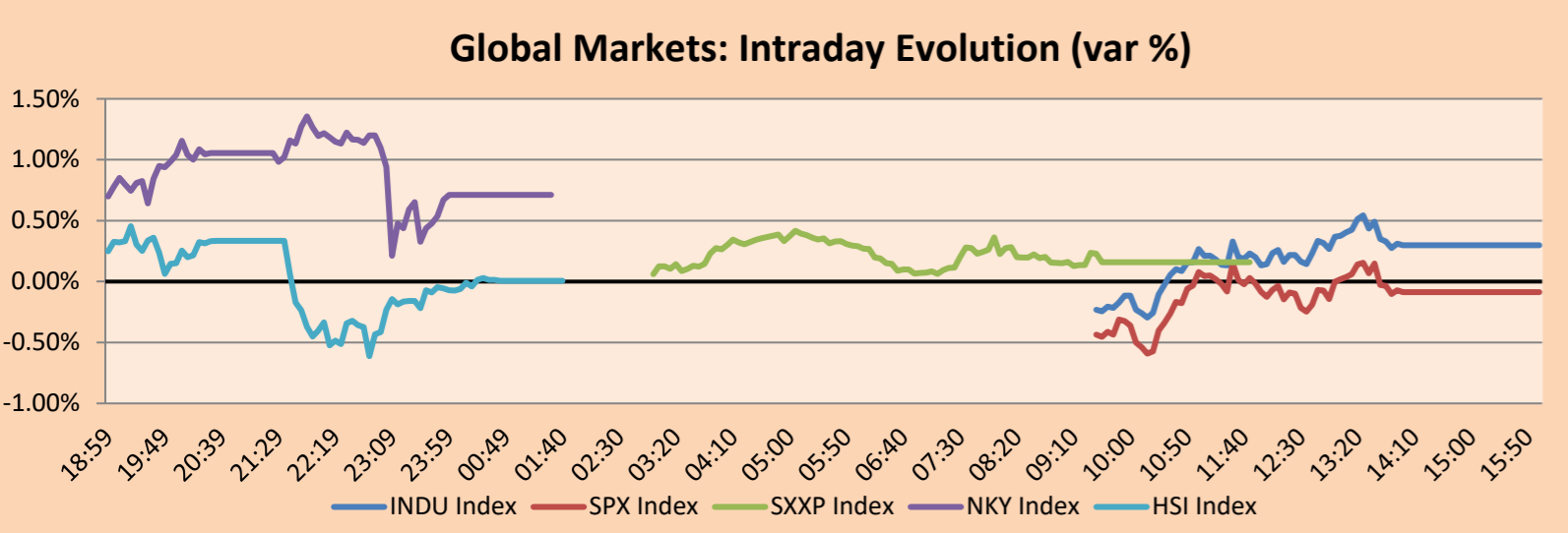
Major US indices closed with mixed results, with the S&P 500 and NASDAQ suffering losses after a US hedge fund, named by sources as Archegos Capital, defaulted on margin calls, putting investors on edge. Global banks may lose more than \$ 6 billion from the fall of Archegos Capital, and regulators and investors fear the episode could have a broader impact. The problems began last week when a disappointing share sale by giant ViacomCBS triggered devastating bank margin requests for Archegos. ViacomCBS shares fell 23% last Wednesday after the media company sold shares at a price that diluted their value. By contrast, the Dow Jones was held higher by US aircraft maker Boeing Co, announcing that it sold 100 new 737 MAX-7 jets to its former customer Southwest Airlines, in its largest order since the safety ban was lifted. Of the plane in the United States late last year. Boeing shares rose 3.5% in early trading on the news. Thus, the S&P 500 -0.09% and the NASDAQ -0.60% ended lower, while the DOW JONES + 0.30% closed the day with gains.

### Europe:

European markets achieved positive returns, despite concerns about the third wave of infections in Europe and falling banking stocks. After a week where Ever Given was in the news, markets were boosted when the container ship blocking the Suez Canal was refloated and is on the move again. The STOXX 600 index posted slight gains, with mining, oil, gas and travel stocks among the day's biggest losers as French doctors warned that a third wave of infections could collapse the country's hospitals. German Chancellor Angela Merkel also pressed for intensified efforts to curb the rise in infections and raised the possibility of introducing curfews to combat the new wave. In equities, Credit Suisse -13.83% fell following a warning of "significant" losses in first quarter results after hedge fund Archegos defaulted on margin calls. Other large European bank stocks followed these results: UBS Group -3.90% and Deutsche Bank -3.24%. Thus, the STOXX 600 +0.16%, CAC 40 +0.45%, FTSE 100 -0.07% and DAX +0.47% closed with generally positive performances.

### Asia:

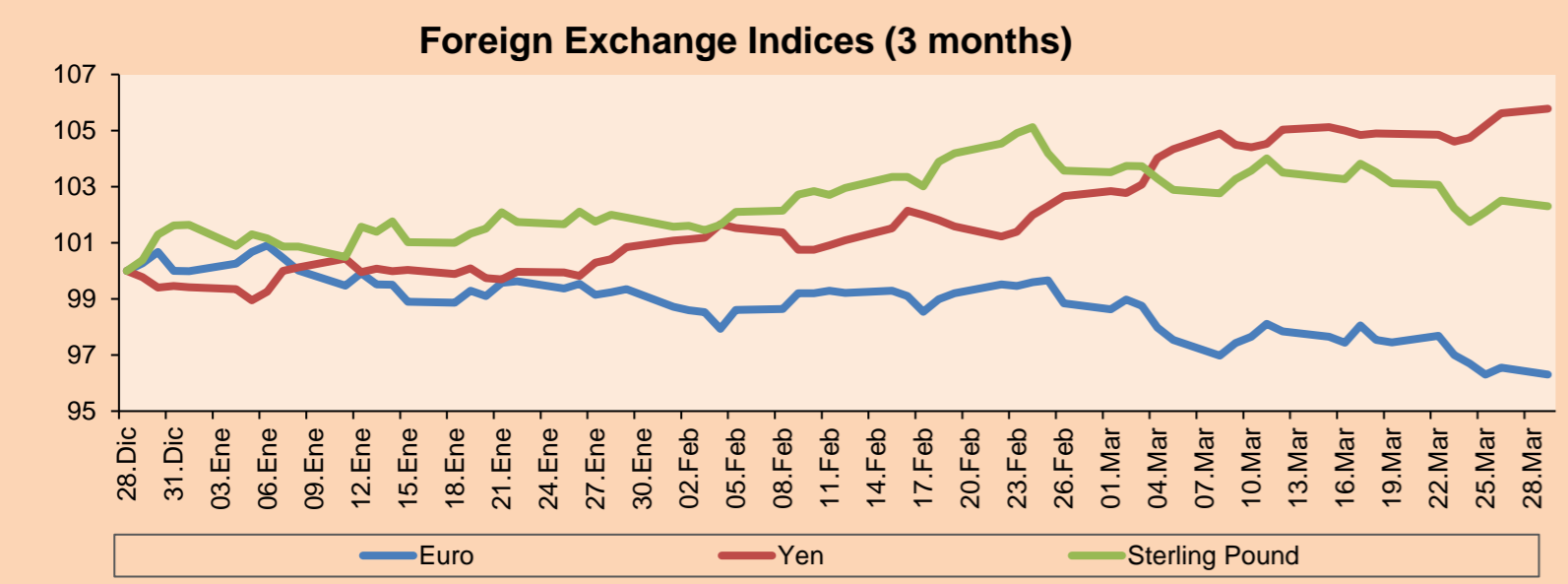
Major Asian stock indexes closed mixed following Wall Street's rally on Friday and renewed tensions between Beijing and Washington. Stocks in China and Hong Kong ended with gains following an acceleration in manufacturing growth in March. In Japan, stocks closed higher amid massive buying of shares to secure the right to collect dividends; investors are migrating to companies that would benefit from the global economic recovery; likewise, the Bank of Japan's willingness to keep monetary policy loose reassured investors. On the other hand, the South Korean market closed lower despite an increase in export growth as rising tensions between China and the United States weighed on investors. Finally, the Australian S&P/ASX 200 index ended the day with losses dragged down by the technology sector -2.80% which hit a 2-week low. Thus KOSPI -0.16%, S&P/ASX 200 -0.40%, HANG SENG -0.05%, Shanghai Composite +0.50%, Nikkei +0.71% ended the session with mixed performances.



Source: Bloomberg

Currency	Price	1 D*	5 D*	1 M*	YTD*
▼ Euro	1.1765	-0.25%	-1.41%	-2.57%	-3.69%
▲ Yen	109.8100	0.16%	0.88%	3.04%	6.35%
▼ Sterling Pound	1.3762	-0.20%	-0.74%	-1.23%	0.67%
▲ Yuan	6.5701	0.44%	0.96%	1.41%	0.66%
▲ Hong Kong Dollar	7.7734	0.06%	0.10%	0.22%	0.26%
▲ Brazilian Real	5.7833	0.46%	5.02%	3.21%	11.25%
▲ Argentine Peso	91.9166	0.08%	0.38%	2.33%	9.23%

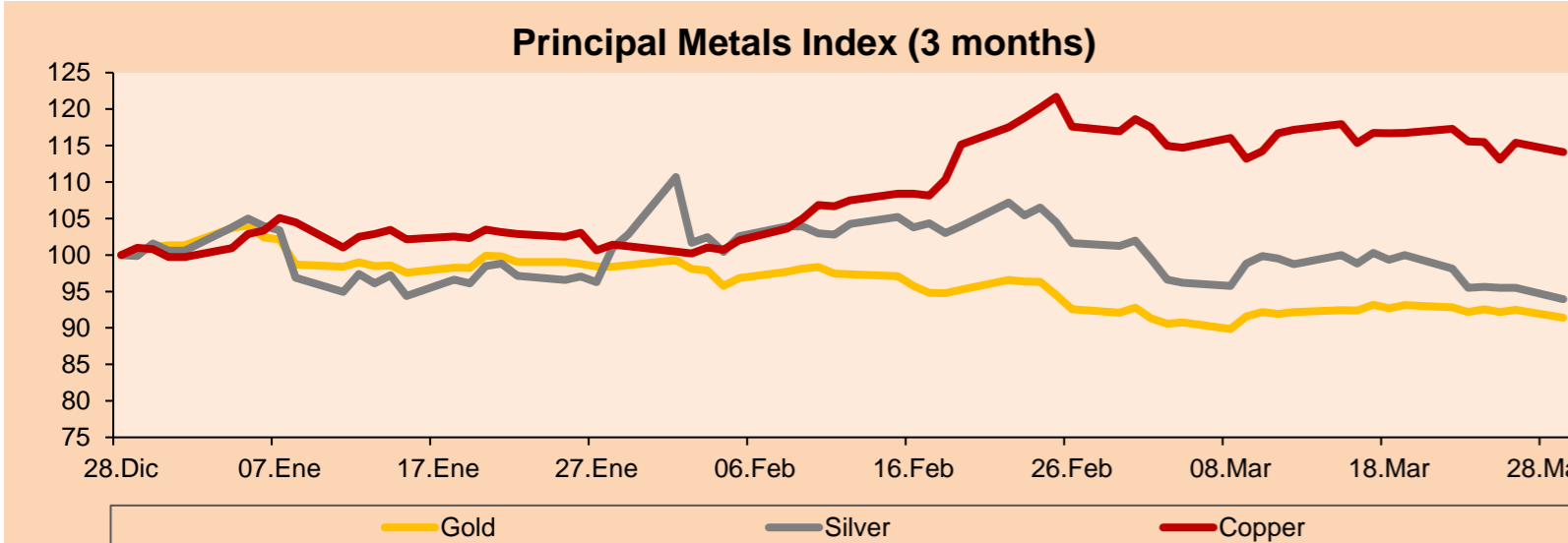
\*Legend: Variation 1D: 1 Day; 5D: 5 Days; 1M: 1 Month; YTD: Var.% 12/31/20 to date



Base: 28/12/20=100  
Source: Bloomberg

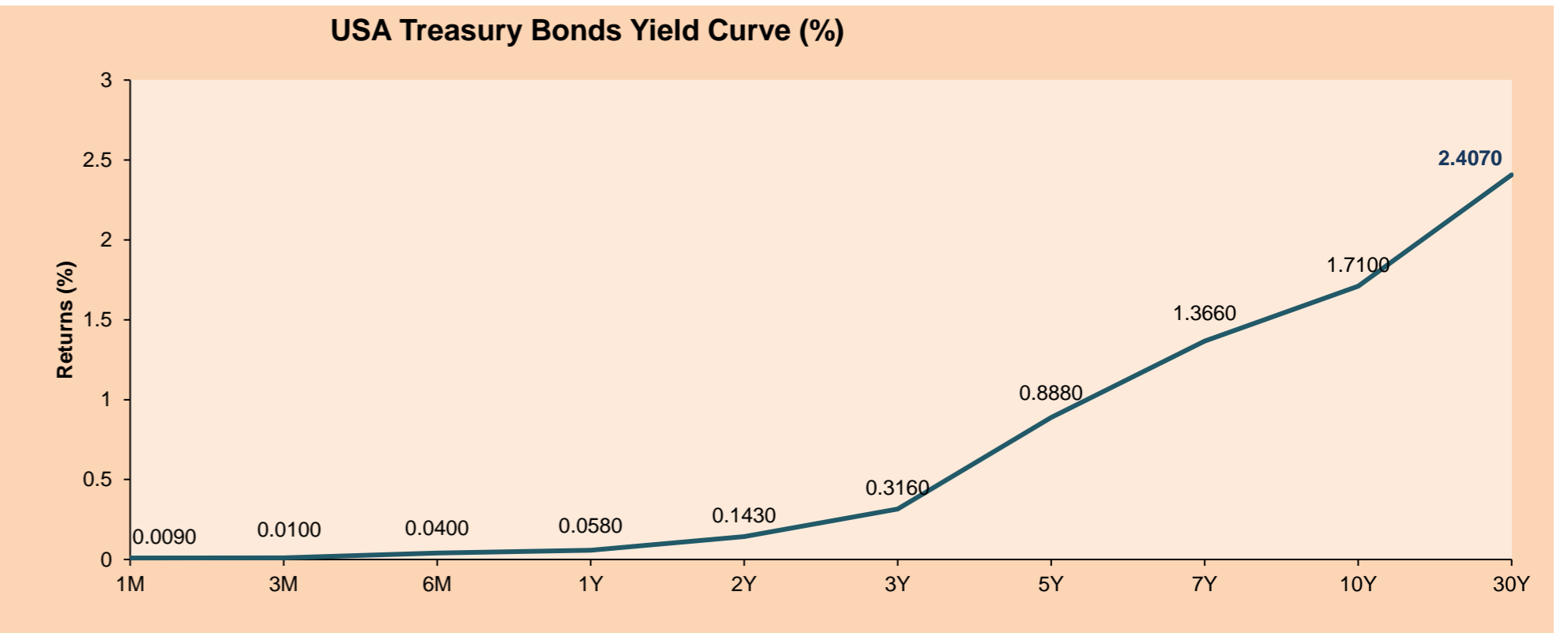
Commodities	Close	1 D*	5 D*	1 M*	YTD*
▼ Oro (US\$ Oz. T) (LME)	1,712.20	-1.17%	-1.54%	-1.26%	-9.81%
▼ Plata (US\$ Oz. T) (LME)	24.66	-1.62%	-4.25%	-7.55%	-6.62%
▼ Cobre (US\$ TM) (LME)	8,866.00	-1.13%	-2.75%	-2.99%	14.41%
▼ Zinc (US\$ TM) (LME)	2,815.60	-0.02%	-1.40%	1.44%	3.16%
▲ Petróleo WTI (US\$ Barril) (NYM)	61.56	0.97%	0.00%	0.54%	26.43%
▲ Estaño (US\$ TM) (LME)	27,420.00	-1.58%	-1.42%	3.32%	33.47%
▲ Plomo (US\$ TM) (LME)	1,931.25	0.17%	-0.80%	-5.27%	-2.25%
▼ Azúcar #11 (US\$ Libra) (NYB-ICE)	14.92	-1.78%	-3.93%	-9.30%	1.63%
▼ Cacao (US\$ TM) (NYB-ICE)	2,436.00	-0.90%	-2.75%	-6.45%	-3.91%
▼ Café Arábica (US\$ TM) (NYB-ICE)	127.05	-1.13%	-2.34%	-7.60%	-2.38%

\*Leyenda: Variación 1D: 1 Día; 5D: 5 Días; 1M: 1 Mes; YTD: Var.% 31/12/20 a la fecha



Base: 28/12/20=100  
Source: Bloomberg

ETFs	Curr.	Close	1D	5D	30 D	YTD	Exchange
SPDR S&P 500 ETF TRUST	USD	395.78	-0.05%	0.81%	4.05%	5.86%	NYSE Arca
ISHARES MSCI EMERGING MARKET	USD	52.90	-0.69%	-1.89%	-1.54%	2.38%	NYSE Arca
ISHARES IBOXX HIGH YLD CORP	USD	86.97	0.06%	0.69%	0.61%	-0.38%	NYSE Arca
FINANCIAL SELECT SECTOR SPDR	USD	34.07	-0.87%	1.31%	5.45%	15.57%	NYSE Arca
VANECK GOLD MINERS	USD	32.86	0.27%	-1.88%	5.56%	-8.77%	NYSE Arca
ISHARES RUSSELL 2000 ETF	USD	214.40	-2.81%	-4.81%	-1.79%	9.35%	NYSE Arca
SPDR GOLD SHARES	USD	160.31	-1.19%	-1.65%	-0.93%	-10.12%	NYSE Arca
ISHARES 20+ YEAR TREASURY BO	USD	135.50	-0.85%	-0.56%	-5.32%	-14.09%	NASDAQ GM
INVESTCO QQQ TRUST SERIES 1	USD	315.91	-0.03%	-0.85%	0.56%	0.69%	NASDAQ GM
ISHARES NASDAQ BIOTECHNOLOGY	USD	147.25	-1.27%	-6.70%	-6.17%	-2.80%	NASDAQ GM
ENERGY SELECT SECTOR SPDR	USD	49.83	-1.19%	2.66%	3.49%	31.48%	NYSE Arca
PROSHARES ULTRA VIX ST FUTUR	USD	6.11	3.74%	0.99%	-35.95%	-42.63%	Cboe BZX
UNITED STATES OIL FUND LP	USD	41.92	0.94%	0.50%	1.48%	26.99%	NYSE Arca
ISHARES MSCI BRAZIL ETF	USD	32.37	-0.12%	-4.03%	1.47%	-12.68%	NYSE Arca
SPDR S&P OIL & GAS EXP & PR	USD	80.88	-2.93%	-1.64%	0.46%	38.26%	NYSE Arca
UTILITIES SELECT SECTOR SPDR	USD	64.15	1.07%	4.06%	9.92%	2.31%	NYSE Arca
ISHARES US REAL ESTATE ETF	USD	92.39	-0.38%	1.71%	5.77%	7.87%	NYSE Arca
SPDR S&P BIOTECH ETF	USD	129.36	-2.78%	-12.07%	-12.59%	-8.11%	NYSE Arca
ISHARES IBOXX INVESTMENT GRA	USD	129.31	-0.24%	0.17%	-2.24%	-6.39%	NYSE Arca
ISHARES JP MORGAN USD EMERGI	USD	108.69	-0.52%	-0.77%	-1.22%	-6.23%	NASDAQ GM
REAL ESTATE SELECT SECT SPDR	USD	39.82	-0.23%	2.95%	6.64%	8.92%	NYSE Arca
ISHARES CHINA LARGE-CAP ETF	USD	46.42	-0.54%	-3.13%	-5.40%	-0.02%	NYSE Arca
CONSUMER STAPLES SPDR	USD	69.27	1.01%	3.82%	9.43%	2.70%	NYSE Arca
VANECK JR GOLD MINERS	USD	45.57	-0.78%	-4.51%	-0.42%	-15.98%	NYSE Arca
SPDR BBG BARC HIGH YIELD BND	USD	108.61	0.09%	0.70%	0.42%	-0.30%	NYSE Arca
VANGUARD REAL ESTATE ETF	USD	92.30	-0.58%	1.28%	5.04%	8.68%	NYSE Arca
GRAYSCALE BITCOIN TRUST BTC	USD	49.45	6.50%	-0.10%	14.47%	54.53%	OTC US



Source: Bloomberg

# LIMA

## Stocks

Ticker	Currency	Price	1D*	5D*	30D*	YTD*	Frequency	Volume (US\$)	Beta	Dividend Yield (%)	Price Earning	Market Cap. (M US\$)	Economic Sector*	Index Weight
▼ ALICORC1 PE**	S/.	7.73	-0.42%	0.17%	-1.24%	-1.24%	100.00%	284,983	0.67	3.23	20.18	1,758.27	Industrial	3.53%
▼ ATACOB1 PE**	S/.	0.15	-2.63%	-4.52%	-12.43%	7.25%	75.00%	3,398	1.09	0.00	-	37.29	Mining	1.02%
▼ BACKUS1 PE**	S/.	22.20	-1.77%	-1.73%	-4.31%	10.17%	95.00%	2,605	0.54	1.58	10.65	8,314.64	Industrial	0.82%
▼ BAP PE**	US\$	137.50	-1.32%	-4.86%	-14.28%	-14.38%	100.00%	1,865,714	1.65	6.40	-	12,977.57	Diverse	5.82%
▼ BVN PE**	US\$	10.22	-0.29%	-6.24%	-7.18%	-14.83%	100.00%	290,945	1.16	0.00	-	2,816.99	Mining	5.88%
▼ CASAGRC1 PE**	S/.	6.00	-0.50%	1.69%	-1.64%	26.32%	80.00%	13,249	0.55	3.77	10.77	134.77	Agricultural	1.31%
▼ BBVAC1 PE**	S/.	2.42	-1.22%	-1.63%	-2.02%	11.52%	100.00%	145,417	0.66	3.57	25.33	4,213.27	Finance	2.85%
- CORAREI1 PE**	S/.	1.15	0.00%	1.77%	4.55%	29.21%	100.00%	40,220	0.57	6.07	6.86	408.21	Industrial	1.72%
▼ CPACASC1 PE**	S/.	5.87	-0.51%	-0.68%	-2.98%	10.75%	100.00%	283,885	0.59	3.92	41.93	715.01	Industrial	2.38%
- CVERDEC1 PE**	US\$	25.00	0.00%	-4.58%	-3.85%	19.50%	100.00%	241,772	0.90	0.00	31.88	8,751.40	Mining	5.25%
▼ ENGEPEC1 PE**	S/.	2.60	-0.76%	-1.89%	3.17%	30.00%	90.00%	97,671	0.50	8.46	15.89	1,968.10	Public Services	1.44%
- ENDISPC1**	S/.	6.05	0.00%	0.00%	2.54%	12.04%	65.00%	3,226	0.48	0.00	14.19	1,030.16	Public Services	0.98%
▲ FERREYC1 PE**	S/.	2.17	0.46%	-4.41%	3.33%	24.71%	100.00%	68,957	0.57	3.53	14.43	564.57	Diverse	4.90%
▲ AENZAC1 PE**	S/.	1.78	0.56%	3.49%	5.95%	2.30%	95.00%	95,656	0.81	0.00	-	413.85	Diverse	4.05%
▲ IFS PE**	US\$	29.00	2.47%	2.11%	-15.94%	-6.27%	100.00%	5,800	1.28	6.03	32.76	3,347.98	Diverse	7.22%
- INRETC1 PE**	US\$	43.00	0.00%	-1.38%	-3.37%	9.69%	100.00%	4,386	0.64	1.31	54.78	4,420.71	Diverse	5.28%
▲ LUSURC1 PE**	S/.	14.00	1.08%	-1.06%	-39.66%	-45.10%	90.00%	62,806	0.55	4.99	14.10	1,817.85	Public Services	1.81%
- MINSUR1 PE**	S/.	2.74	0.00%	-2.14%	-11.61%	48.11%	90.00%	916,881	0.79	0.00	72.16	2,106.40	Mining	3.09%
▼ PML PE**	US\$	0.15	-2.60%	-3.23%	-6.25%	41.51%	65.00%	23,337	1.45	0.00	-	39.63	Mining	2.12%
- RELAPAC1 PE**	S/.	0.13	0.00%	-2.96%	0.77%	89.86%	95.00%	14,851	0.47	0.00	-	290.60	Industrial	2.12%
▼ SCCO PE**	US\$	68.02	-0.70%	-5.54%	-4.64%	3.22%	90.00%	13,604	0.96	2.50	31.62	52,584.44	Mining	2.14%
- SIDERC1 PE**	S/.	1.10	0.00%	7.84%	8.91%	29.41%	85.00%	34,348	0.80	25.17	13.07	360.17	Industrial	1.43%
- TV PE**	US\$	0.15	0.00%	-2.60%	-4.46%	2.04%	95.00%	39,840	1.47	0.00	-	148.36	Mining	2.93%
▲ UNACEMC1 PE**	S/.	1.66	0.61%	-7.78%	-9.78%	7.10%	95.00%	48,582	0.81	0.78	36.36	804.78	Industrial	3.00%
- VOLCABC1 PE**	S/.	0.87	0.00%	6.10%	12.99%	67.31%	100.00%	468,582	0.86	0.00	-	945.71	Mining	5.90%
▲ NEXAPEC1 PE**	S/.	3.40	1.49%	-6.85%	-13.92%	20.14%	85.00%	537,463	1.12	0.00	-	1,198.96	Mining	1.56%

Quantity of shares: 26

Source: Bloomberg, Economática

\* Bloomberg Industry Classification System

\*\* PER is used in the stock market and original currency of the instrument

\*Legend: Variation 1D: 1 Day; 5D: 5 Days, 1M: 1 Month; YTD: Var.% 12/31/20 to date

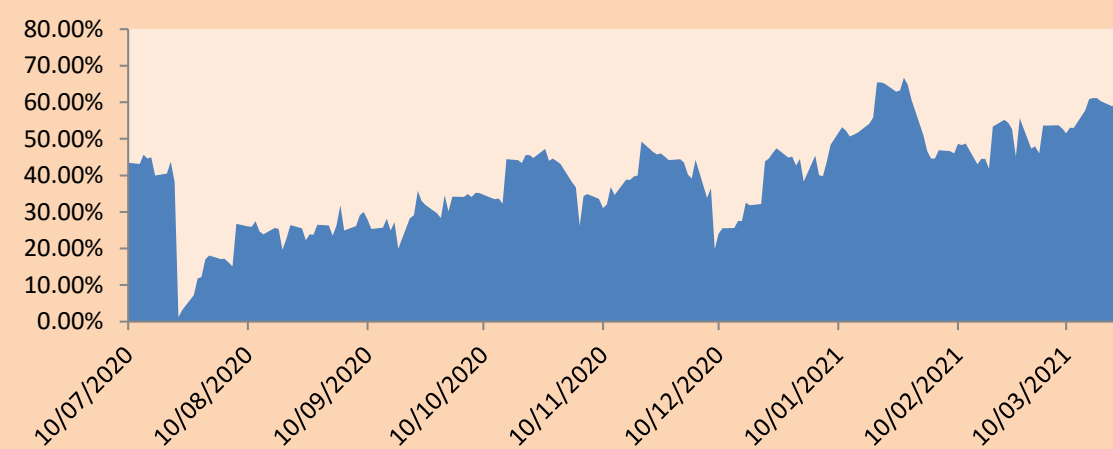
### Sectorial Indices

	Close	1D*	5D*	30D*	YTD*	Beta
▼ S&P/BVLMining	416.43	-0.05%	-4.07%	-2.57%	6.79%	0.94
▼ S&P/BVLConsumer	1,210.77	-0.05%	-1.26%	-2.72%	11.22%	0.41
▲ S&P/BVLIndustrials	216.89	0.27%	-2.75%	-0.60%	13.82%	0.49
▲ S&P/BVLFinancials	934.33	-0.50%	-3.11%	-11.58%	-9.63%	1.77
▲ S&P/BVLConstruction	227.43	0.19%	-1.98%	-2.29%	8.76%	0.54
▼ S&P/BVLPublicSvcs	658.90	-0.25%	0.45%	3.29%	7.30%	0.14
▼ S&P/BVLElectricUtil	643.25	-0.25%	0.45%	3.29%	7.29%	0.14

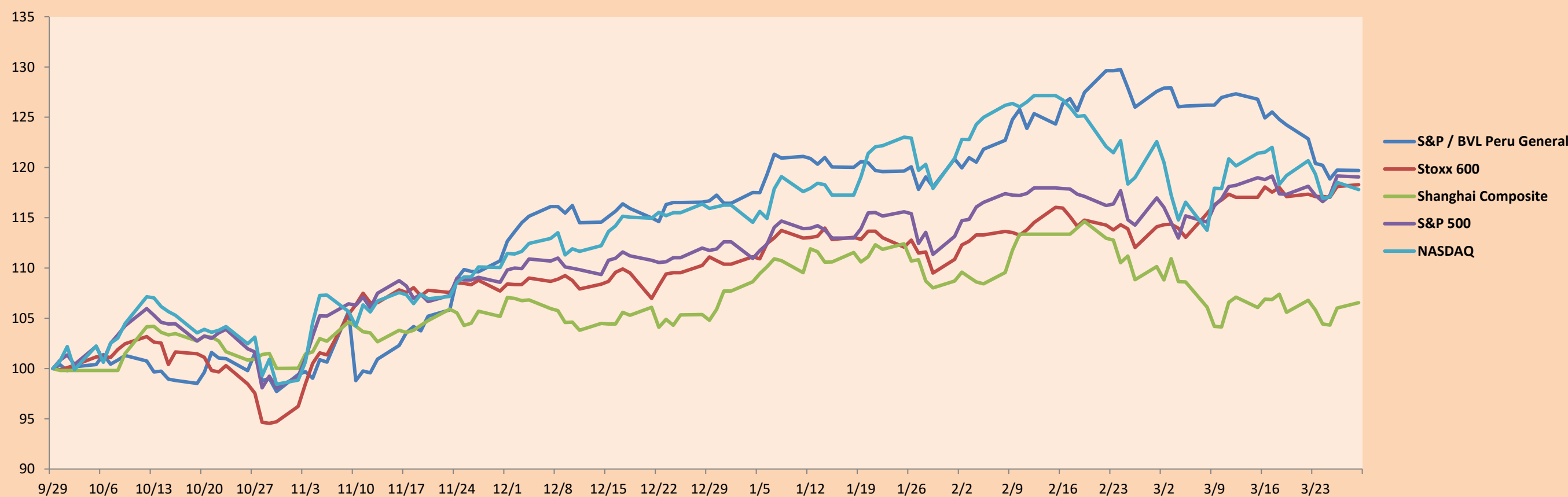
S&P/BVLConstructionTRPEN

\*Legend: Variation 1D: 1 Day; 5D: 5 Days, 1M: 1 Month; YTD: Var.% 12/31/20 to date

Correlation Graph of Returns of Mining Index against Metallic Index of London (3 months)



Indices (6 months)



Base: 29/09/20=100  
Source: Bloomberg

Capital Market Laboratory Coordinator: Economist Bruno Bellido  
Collaboration: Piero Best, Maria Camarena, Alonso Stephen Hernández and Adrian Paredes  
email: pulsobursatil@ulima.edu.pe  
facebook: www.facebook.com/pulsobursatil.ul

## SOVEREIGN RATING

### RISK RATINGS

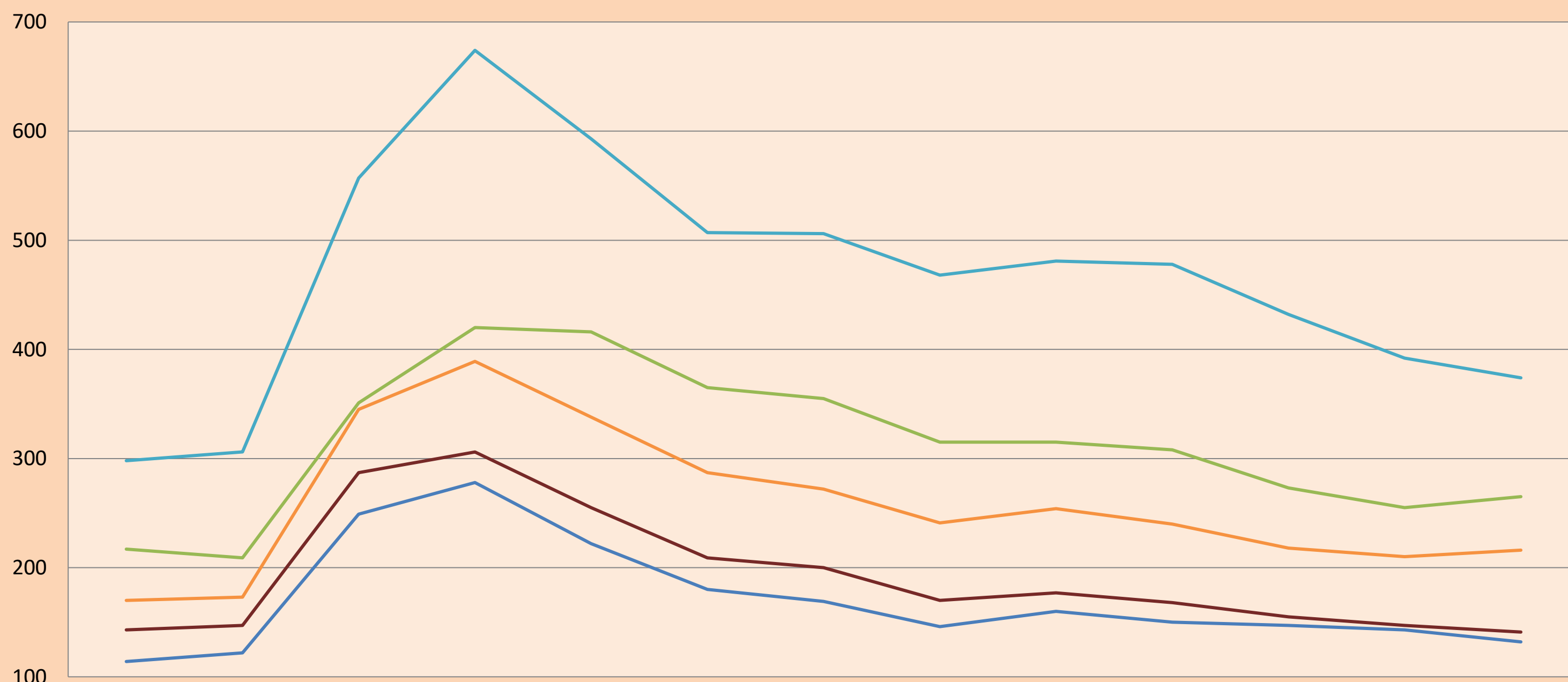
Moody's	S&P	Fitch	
Aaa	AAA	AAA	Prime
Aa1	AA+	AA+	High credit quality
Aa2	AA	AA	
Aa3	AA-	AA-	
A1	A+	A+	Medium-high grade, with low credit risk
A2	A	A	
A3	A-	A-	
Baa1	BBB+	BBB+	Moderate Credit Risk
Baa2	BBB	BBB	
Baa3	BBB-	BBB-	
Ba1	BB+	BB+	It has speculative elements and it is subject to substantial credit risk
Ba2	BB	BB	
Ba3	BB-	BB-	
B1	B+	B+	It is considered speculative and it has high credit risk
B2	B	B	
B3	B-	B-	
Caa1	CCC+	CCC	
Caa2	CCC	CCC	
Caa3	CCC-	CCC	
Ca	CC	CC	Very close to default or in default
C	C	CC	
C	D	DD	

Source: Bloomberg

Latin America Credit Rating			
Clasificadora de riesgo			
Country	Moody's	Fitch	S&P
Peru	A3	BBB+	BBB+
México	Ba2	BB-	BB-
Venezuela	C	WD	SD
Brazil	Ba2	BB-	BB-
Colombia	Baa2	BBB-	BBB-
Chile	A1	A-	A
Argentine	Ca	WD	CCC+
Panama	Baa2	BBB-	BBB

Source: Bloomberg

### LATAM Country Risk (bps)



	Ene-20	Feb-20	Mar-20	Abr-20	May-20	Jun-20	Jul-20	Ago-20	Set-20	Oct-20	Nov-20	Dic-20	Ene-21
Perú	114	122	249	278	222	180	169	146	160	150	147	143	132
Brasil	217	209	351	420	416	365	355	315	315	308	273	255	265
México	298	306	557	674	593	507	506	468	481	478	432	392	374
Colombia	170	173	345	389	338	287	272	241	254	240	218	210	216
Chile	143	147	287	306	255	209	200	170	177	168	155	147	141

Source: BCRP

Capital Market Laboratory Coordinator: Economist Bruno Bellido  
Collaboration: Piero Best, María Camarena, Alonso Stephen Hernández and Adrian Paredes  
email: [pulsobursatil@ulima.edu.pe](mailto:pulsobursatil@ulima.edu.pe)  
facebook: [www.facebook.com/pulsobursatil.ul](https://www.facebook.com/pulsobursatil.ul)