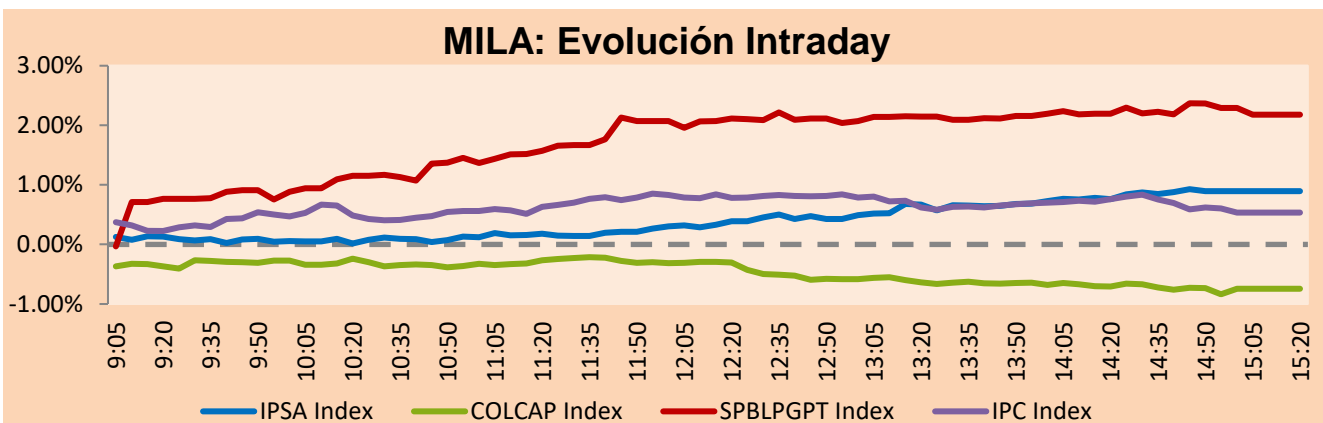


MILA

Lima, April 8, 2021

Main Indexes	Close	1 D	5 D	1 M	YTD	Cap. Burs. (US\$ bill)
▲ IPSA (Chile)	4,910.19	1.05%	0.25%	4.18%	17.55%	136.01
▲ IGPA (Chile)	24,764.35	0.91%	0.31%	4.11%	17.88%	165.22
▼ COLSC (Colombia)	1,038.75	-0.35%	-0.68%	-1.19%	-1.91%	5.33
▼ COLCAP (Colombia)	1,325.93	-0.75%	-0.10%	-0.83%	-7.79%	78.38
▲ S&P/BVL (Perú)*	21,799.92	2.18%	1.50%	-3.39%	4.70%	111.93
▲ S&P/BVL SEL (Perú)	575.73	1.32%	0.10%	-3.88%	4.41%	99.11
▲ S&P/BVL LIMA 25	29,222.72	1.31%	1.20%	-1.49%	15.97%	110.90
▲ IPC (México)	48,188.15	0.61%	0.59%	2.36%	9.35%	300.87
▲ S&P MILA 40	562.05	1.67%	2.97%	3.26%	5.13%	260.86

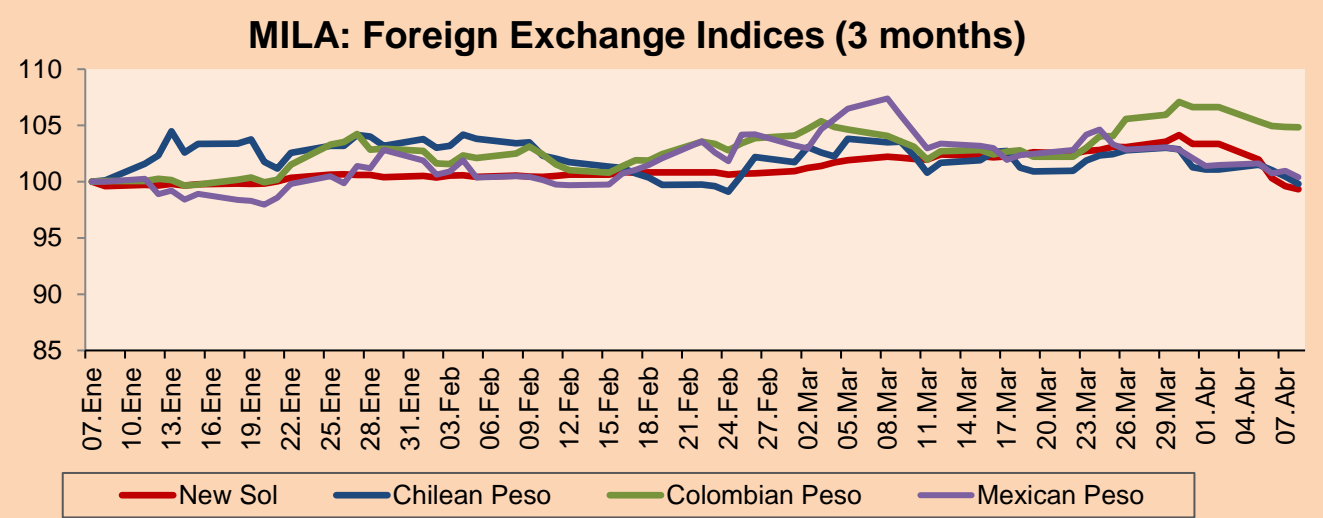
*Legend: Variation 1D: 1 day; 5D: 5 days; 1M: 1 Month; YTD: Var% 12/31/20 to date



Source: Bloomberg

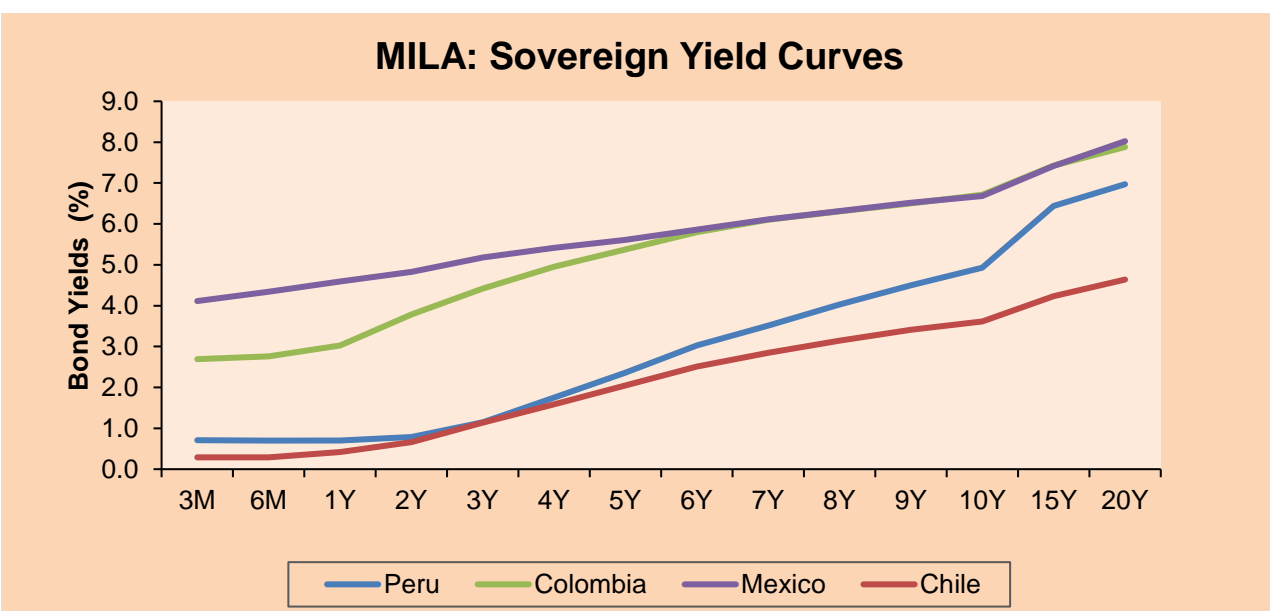
Currency	Price	1D*	5D*	30 D*	YTD*
▼ Sol (PEN)	3,597.9	-0.26%	-3.89%	-2.73%	-0.56%
▼ Chilean Peso (CLP)	708.40	-0.67%	-1.28%	-3.63%	-0.47%
▼ Colombian Peso (COP)	3,642.07	-0.03%	-1.68%	1.21%	6.19%
▼ Mexican Peso (MXN)	20.10	-0.55%	-0.98%	-5.17%	0.91%

*Legend: Variation 1D: 1 day; 5D: 5 days; 1M: 1 Month; YTD: Var% 12/31/20 to date



Base: 07/01/21=100
Source: Bloomberg

Fixed Income	Currency	Price	Bid Yield (%)	Ask Yield (%)	Duration
PERU 7.35 07/21/25	USD	124.205	1.54	1.43	3.76
PERU 4.125 08/25/27	USD	112.319	2.10	2.01	5.71
PERU 8.75 11/21/33	USD	157.566	3.21	3.14	8.72
PERU 6.55 03/14/37	USD	137.452	3.49	3.45	10.56
PERU 5.625 11/18/2050	USD	135.735	3.66	3.62	16.48
CHILE 2.25 10/30/22	USD	102.786	0.56	0.32	1.52
CHILE 3.125 01/21/26	USD	108.305	1.38	1.27	4.48
CHILE 3.625 10/30/42	USD	106.466	3.23	3.19	15.35
COLOM 11.85 03/09/28	USD	158.567	2.67	2.43	5.31
COLOM 10.375 01/28/33	USD	153.85	4.56	4.36	7.86
COLOM 7.375 09/18/37	USD	133.98	4.49	4.40	10.65
COLOM 6.125 01/18/41	USD	120.805	4.55	4.49	12.33
MEX 4 10/02/23	USD	120.805	4.551	4.492	12.33
MEX5.55 01/45	USD	116.276	4.46	4.42	14.04



Source: Bloomberg

Equity

Largest gains	Exchange	Currency	Price	▲%	Largest losses	Exchange	Currency	Price	▼%
CREDICORP LTD	Peru	USD	153.00	5.88	ORBITA ADVANCE CO	Mexico	MXN	53.58	-2.95
CONCHATORO	Chile	CLP	1295.00	4.60	ECOPETROL	Colombia	COP	2281	-2.40
FIBRA UNO	Mexico	MXN	25.24	3.91	GRUPO ENERGIA BO	Colombia	COP	2636	-2.30
BUENAVENTURA-ADR	Peru	USD	10.50	3.65	GRUPO MEXICO-B	Mexico	MXN	103.18	-2.00
WALMART DE MEXIC	Mexico	MXN	66.11	3.35	GRUPO NUTRESA SA	Colombia	COP	22920	-1.67

Per Turnover	Exchange	Amount (US\$)	Per Volume	Exchange	Volume
GRUPO MEXICO-B	Mexico	88,528,086	BANCO SANTANDER	Chile	546,318,229
ENEL AMERICAS SA	Chile	66,394,989	ENEL AMERICAS SA	Chile	387,760,411
GRUPO F BANORT-O	Mexico	42,426,103	ITAU CORPBANCA	Chile	145,776,621
BANCO SANTANDER	Chile	34,237,902	ENEL CHILE SA	Chile	75,071,700
AMERICA MOVIL-L	Mexico	33,706,264	AMERICA MOVIL-L	Mexico	46,991,843

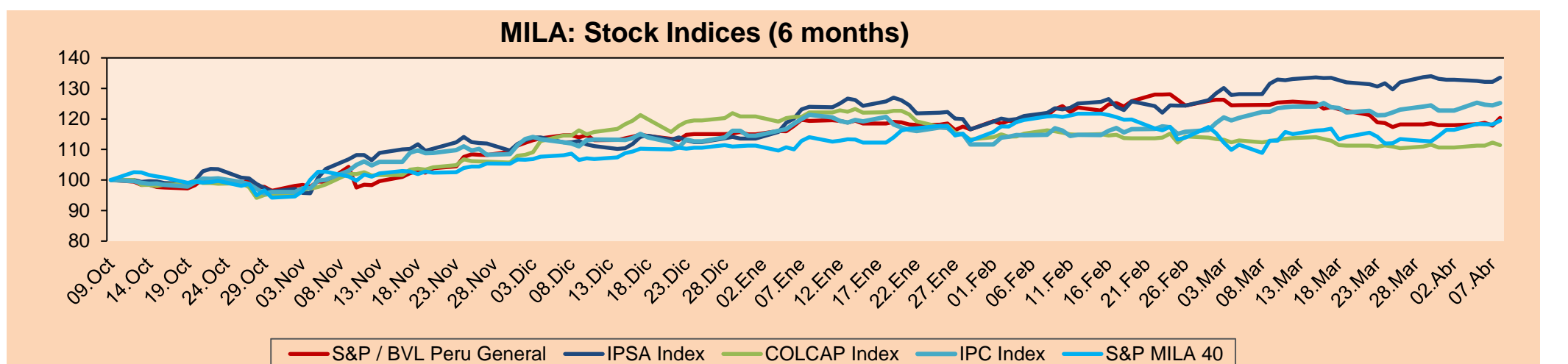
MILA

Peru: The BVL General Index ended today's session with a positive result of +2.18%. The index maintains a positive annual cumulative trend of +4.70% in local currency, while the dollar-adjusted performance amounted to 5.28%. Then, the S&P / BVL Peru SEL varied by +1.32% while the S&P / BVL LIMA 25 by 1.31%. The spot PEN reached S / 3.5979. Headline: Foreign investment will return to the Lima Stock Exchange from June due to attractive prices

Chile: The IPSA index ended the day with a positive return of +1.05%. The most benefited sectors of the day were Industrials (+3.68%) and Non-Basic Consumer Products (+2.52%). The best performing stocks were Viña Concha y Toro SA (+4.60%) and Compañía Sud Americana de Vapo (+3.68%). Headline: Chile posts US\$535 million trade surplus in March

Colombia: The COLCAP index closed today with a negative return of -0.75%. The sectors that lost the most during the day were Consumer Staples (-1.65%) and Utilities (-1.10%). The worst performing stocks were Promigas SA (-3.52%) and Ecopetrol SA (-1.03%). Headline: United States earmarks US\$10 million for Colombia's economic reactivation

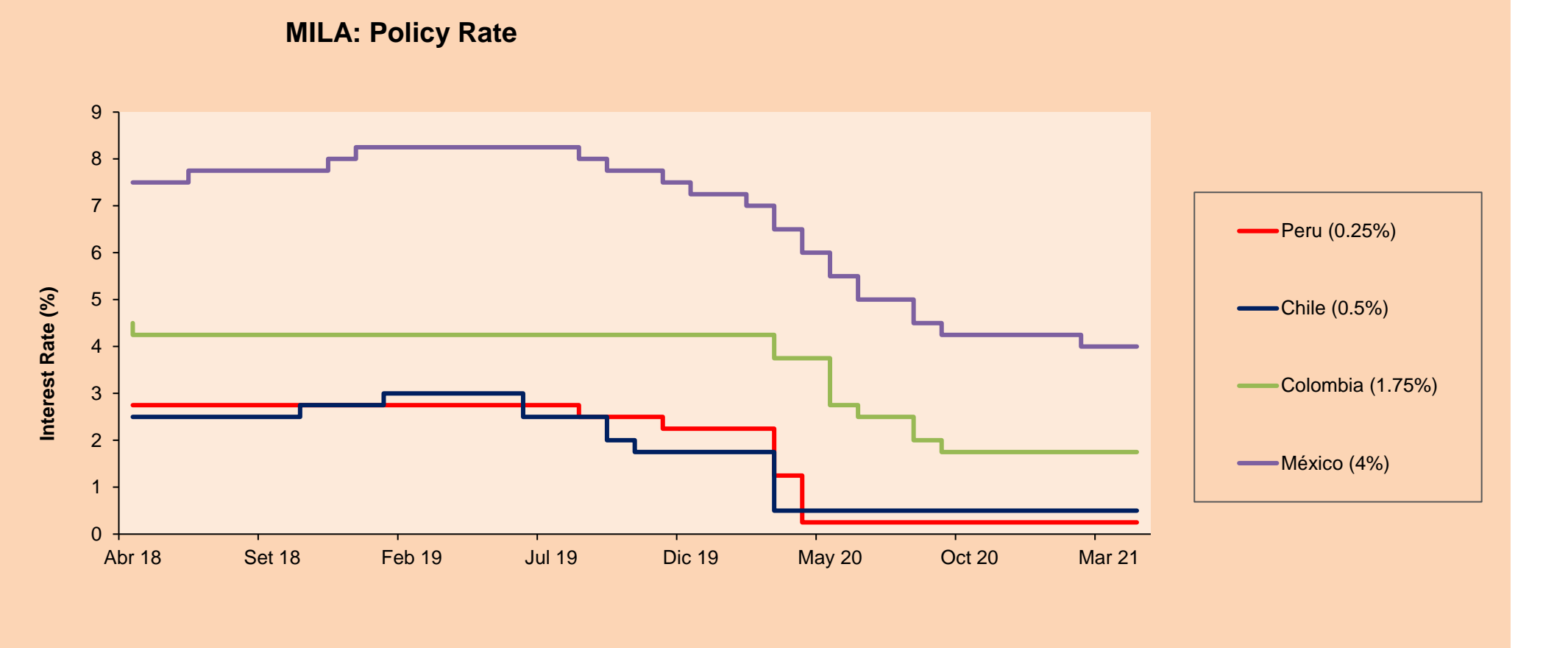
Mexico: The IPC index closed the day with a positive return of +0.61%. The sectors that benefited the most during the day were Communication Services (+1.96%) and Consumer Staples (+1.56%). The worst performers were Wal-Mart de Mexico SAB (+3.35%) and América Móvil SAB (+2.20%). Headline: Inflation climbs to 4.67% in Mexico, the worst record in more than two years



Base: 12/10/20=100
Source: Bloomberg

ETFs

ETFs	Curr.	Close	1D	5D	30 D	YTD	Exchange
▲ iShares MSCI All Peru Caped Index Fund	USD	36.7699	2.67%	6.15%	1.46%	6.03%	NYSE Arca
▲ iShares MSCI All Chile Caped Index Fund	USD	34.91	1.96%	1.78%	5.72%	15.56%	Cboe BZX
▲ Global X MSCI Colombia	USD	10.42	1.07%	1.46%	1.17%	-8.27%	NYSE Arca
▲ iShares MSCI Mexico Capped	USD	45.82	1.33%	2.80%	8.22%	6.58%	NYSE Arca
▲ iShares MSCI Emerging Markets	USD	54.01	0.82%	0.28%	0.90%	4.53%	NYSE Arca
▲ Vanguard FTSE Emerging Markets	USD	52.65	1.04%	0.25%	0.59%	5.07%	NYSE Arca
▲ iShares Core MSCI Emerging Markets	USD	65.3	0.90%	0.35%	1.35%	5.25%	NYSE Arca
▲ iShares JP Morgan Emerging Markets Bonds	USD	63.43	0.52%	0.14%	1.51%	3.85%	Cboe BZX
▼ Morgan Stanley Emerging Markets Domestic	USD	6.06	-0.16%	0.66%	2.19%	-3.66%	New York

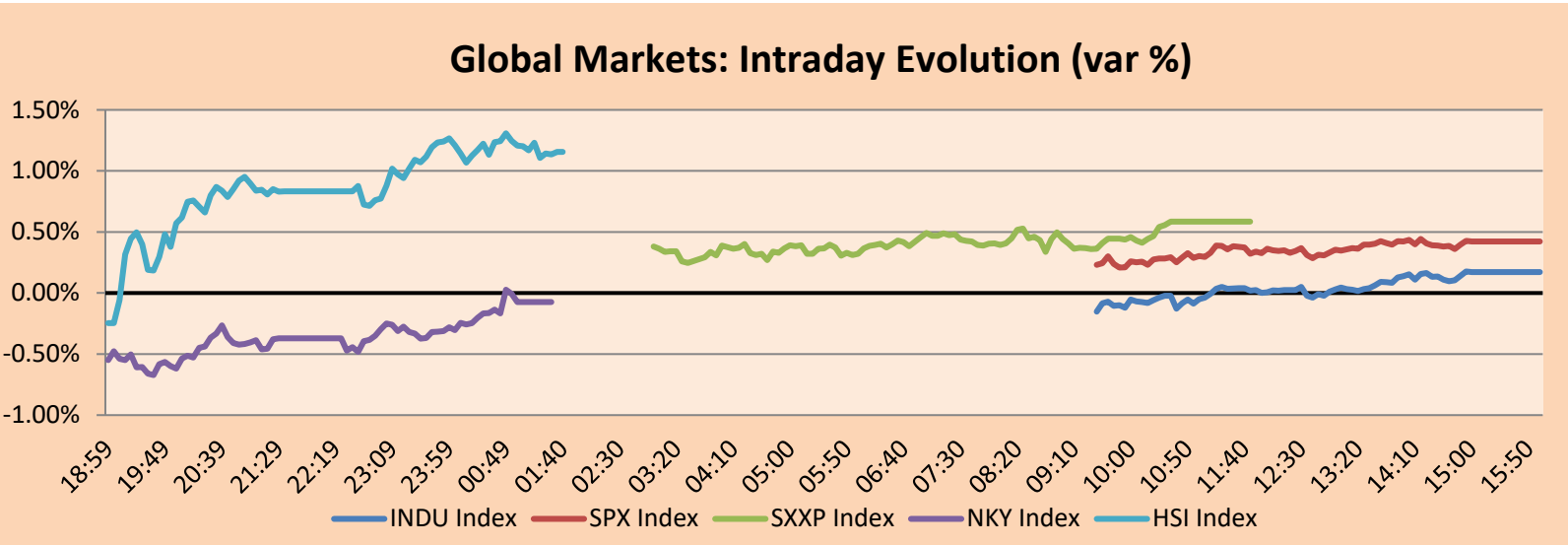


Source: Bloomberg

WORLD

Main Indices	Close	1 D*	5 D*	1 M*	YTD*	Market Cap. (US\$ Mill.)
▲ Dow Jones (USA)	33,503.57	0.17%	1.58%	5.35%	9.47%	10,132,144
▲ Standard & Poor's 500 (EEUU)	4,097.17	0.42%	3.13%	7.22%	9.08%	36,082,782
▲ NASDAQ Composite (USA)	13,829.31	1.03%	4.40%	9.68%	7.30%	22,398,758
▲ Stoxx EUROPE 600 (Europe)	436.86	0.58%	1.44%	3.91%	9.48%	10,074,334
▲ DAX (Germany)	15,202.68	0.17%	1.29%	5.30%	10.82%	1,158,998
▲ FTSE 100 (United Kingdom)	6,942.22	0.83%	2.51%	3.15%	7.46%	1,460,425
▲ CAC 40 (France)	6,165.72	0.57%	1.28%	4.06%	11.07%	1,692,424
▲ IBEX 35 (Spain)	8,637.80	0.47%	0.50%	1.66%	6.99%	481,937
▲ MSCI AC Asia Pacific Index	207.55	0.30%	0.91%	1.50%	3.81%	26,201,597
▲ HANG SENG (Hong kong)	29,008.07	1.16%	2.36%	0.82%	6.53%	4,386,533
▲ SHANGHAI SE Comp. (China)	3,482.56	0.08%	1.18%	3.67%	0.27%	6,556,109
▼ NIKKEI 225 (Japan)	29,708.98	-0.07%	-1.09%	2.35%	8.25%	3,996,030
▲ S&P / ASX 200 (Australia)	6,998.77	1.02%	3.86%	3.36%	6.25%	1,708,683
▲ KOSPI (South Korea)	3,143.26	0.61%	0.59%	5.62%	9.39%	1,883,381

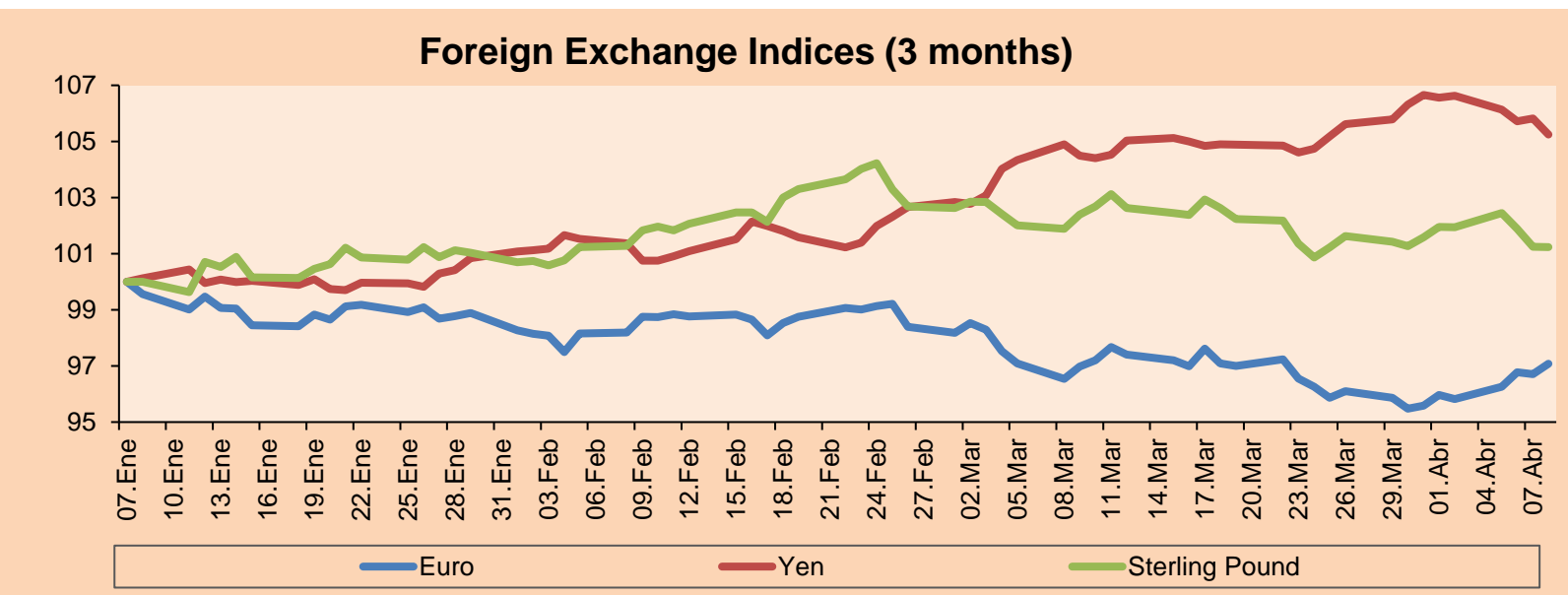
*Legend: Variation 1D: 1 Day; 5D: 5 Days; 1M: 1 Month; YTD: Var.% 12/31/20 to date



Source: Bloomberg

Currency	Price	1 D*	5 D*	1 M*	YTD*
▲ Euro	1.1914	0.39%	1.16%	0.11%	-2.47%
▼ Yen	109.2600	-0.54%	-1.23%	0.72%	5.82%
▼ Sterling Pound	1.3735	-0.01%	-0.71%	-1.13%	0.48%
▲ Yuan	6.5511	0.13%	-0.21%	0.69%	0.37%
▼ Hong Kong Dollar	7.7774	-0.10%	0.02%	0.22%	0.31%
▼ Brazilian Real	5.5718	-0.79%	-2.40%	-4.04%	7.18%
▲ Argentine Peso	92.3831	0.06%	0.73%	1.92%	9.79%

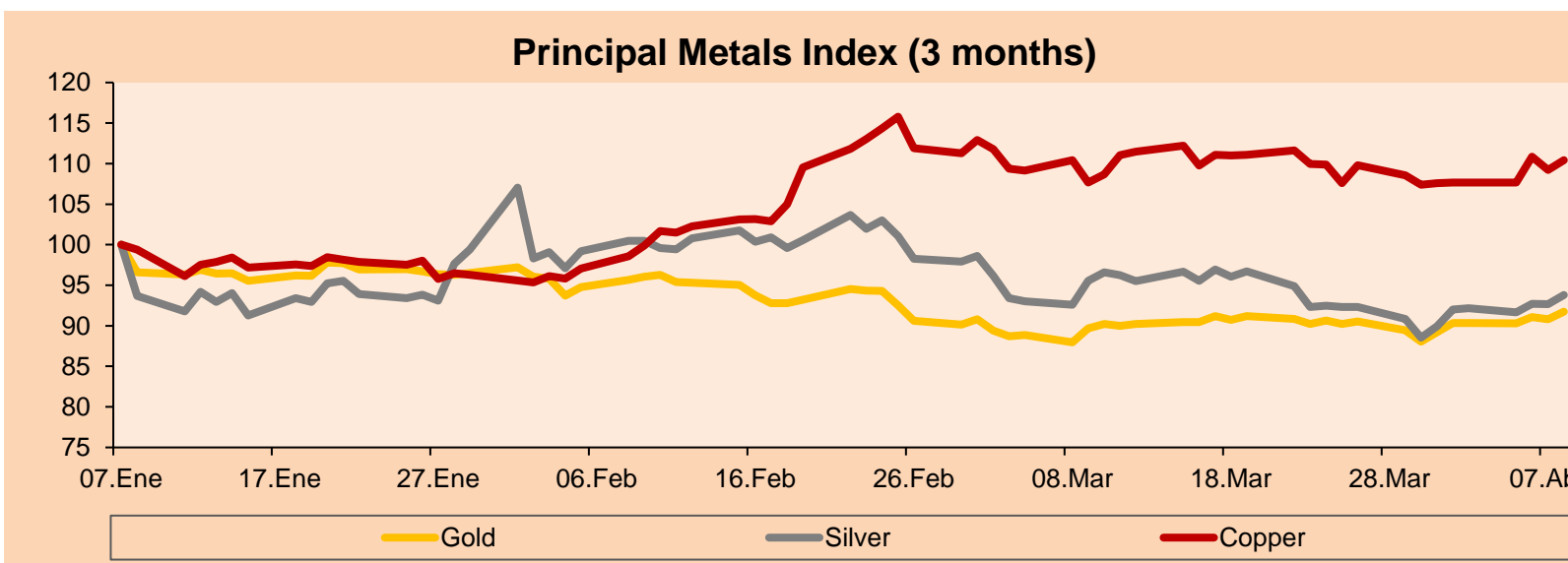
*Legend: Variation 1D: 1 Day; 5D: 5 Days; 1M: 1 Month; YTD: Var.% 12/31/20 to date



Base: 07/01/21=100
Source: Bloomberg

Commodities	Close	1 D*	5 D*	1 M*	YTD*
▲ Oro (US\$ Oz. T) (LME)	1,755.84	1.04%	1.53%	2.32%	-7.51%
▲ Plata (US\$ Oz. T) (LME)	25.46	1.23%	1.95%	-1.84%	-3.57%
▲ Cobre (US\$ TM) (LME)	9,018.25	1.11%	2.54%	2.54%	16.38%
▲ Zinc (US\$ TM) (LME)	2,834.00	0.78%	2.79%	2.95%	3.84%
▼ Petróleo WTI (US\$ Barril) (NYM)	59.60	-0.28%	-3.01%	-6.86%	22.41%
▼ Estaño (US\$ TM) (LME)	27,520.00	-0.86%	3.16%	1.40%	33.95%
▼ Plomo (US\$ TM) (LME)	1,960.85	-0.55%	0.99%	0.95%	-0.75%
▲ Azúcar #11 (US\$ Libra) (NYB-ICE)	15.18	0.26%	3.20%	-4.53%	3.41%
▼ Cacao (US\$ TM) (NYB-ICE)	2,384.00	-1.12%	-1.32%	-6.88%	-5.06%
▲ Café Arábica (US\$ TM) (NYB-ICE)	127.85	0.87%	5.14%	-1.96%	-1.77%

*Leyenda: Variación 1D: 1 Día; 5D: 5 Días; 1M: 1 Mes; YTD: Var.% 31/12/20 a la fecha



Base: 07/01/21=100
Source: Bloomberg

Equity

Germany (Stocks from DAX Index)

Largest gains	Curr.	Price	▲%	Exchange	Largest losses	Curr.	Price	▼%	Exchange
ADS GY	EUR	276.75	2.31	Xetra	DAI GY	EUR	74.21	-1.85	Xetra
RWE GY	EUR	34.61	2.12	Xetra	BAS GY	EUR	71.45	-1.24	Xetra
DB1 GY	EUR	145.55	1.71	Xetra	DBK GY	EUR	10.342	-1.20	Xetra
SAP GY	EUR	111.1	1.59	Xetra	CON GY	EUR	112.98	-1.15	Xetra

Europe (Stocks from STOXX EUROPE 600)

Largest gains	Curr.	Price	▲%	Exchange	Largest losses	Curr.	Price	▼%	Exchange
GRF SQ	EUR	23.39	4.51	Soc.Bol SIBE	CDR PW	PLN	183	-4.57	Warsaw
EXPN LN	GBp	2647	4.38	Londres	CCL LN	GBp	1719.4	-4.42	Londres
PUM GY	EUR	90.18	4.30	Xetra	RNO FP	EUR	36.395	-3.47	EN Paris
SGE LN	GBp	655	4.10	Londres	DUFN SE	CHF	63.76	-3.39	SIX Swiss Ex

Global Overview:

United States:

The main US indexes ended the session today with positive results, despite speculation of a rise in inflation and greater market volatility. First, the large stimulus invested to combat the COVID19 pandemic cause almost guaranteed inflationary shocks in the coming months. Also, the US options market appears to be betting roughly \$ 40 million on the subsequent stock market crash, due to increased volatility. In this way, several traders bet that the Cboe index, popularly called Wall Street's fear indicator, will exceed the 25 level, and rise to 40 in the middle of the year, as shown by the commercial data of today. On the other hand, Biden announces steps on gun control, including stricter rules for buyers of "ghost guns." This event has affected the shares of arms manufacturers such as Storm Ruger & Co. -0.84% and Smith & Wesson Brands Inc. -0.6%. Finally, the rise in the information technology sector brings good news for today's market, specifically shares such as IGP Photonics Corp + 5.11% and Zebra Tech Corp + 3.62% contributed, for the S&P 500 and Salesforce.com Inc + 1.66% and Microsoft Corp + 1.34%, for the Dow. Thus, Dow + 0.17%, S&P 500 + 0.42% and Nasdaq 1.03% closed with positive results.

Europe:

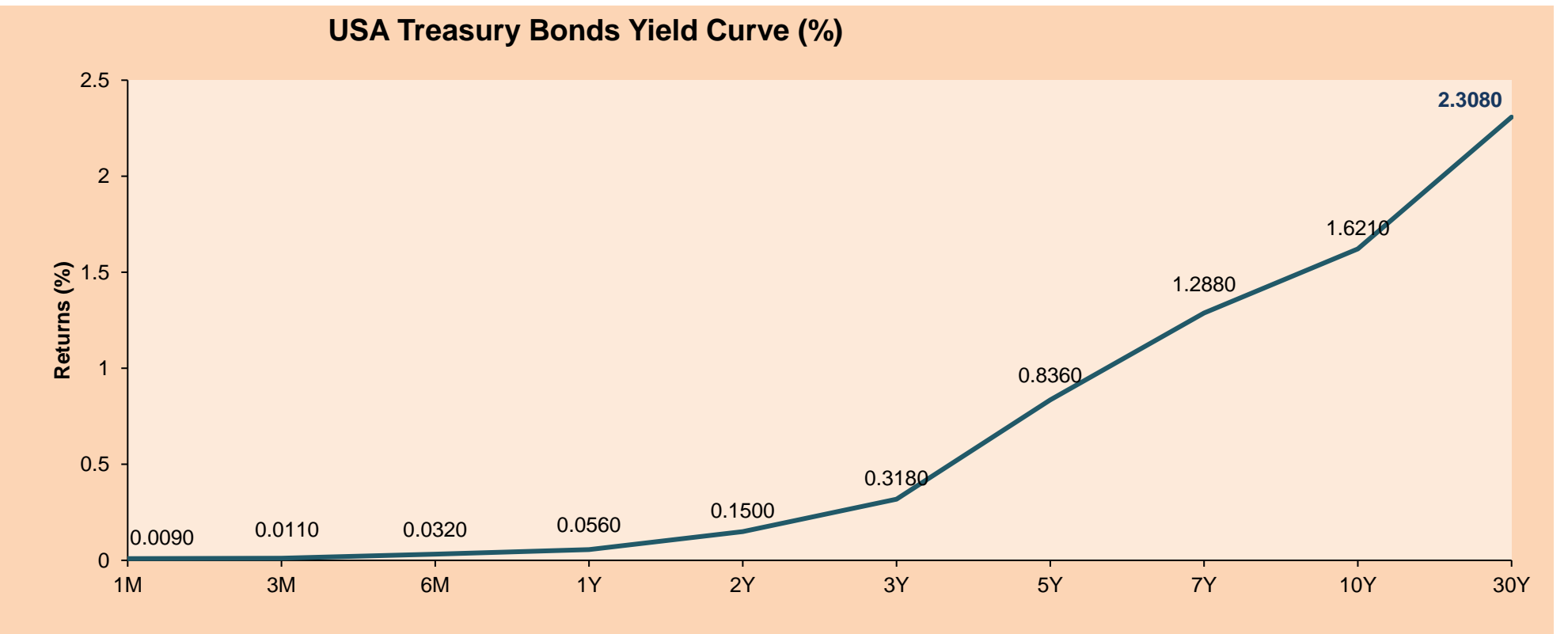
European markets ended the day's trading day with stocks higher as investors' positive reaction to the FED minutes and economic data boosted the markets. The pan-European STOXX 600 index continued the week's gains, overcoming all of its pandemic-induced losses. Global markets maintained the optimism generated by the FED's announcement that it would not tighten policy. As a result, mining stocks, automakers and retailers led gains of 0.7% to 1% in early trading. On the data front, Mark Haeefe, chief investment officer at UBS, said that "European economies are holding up well despite the third wave of the pandemic." He also added that "with vaccines available in the second quarter it should allow for a sustainable reopening." Meanwhile, German industrial orders rose in February due to strong domestic demand, according to data from the Federal Statistical Office. In the stock markets, Reuters highlights Grifols +4.51%, Prosus NV +1.78% and Johnson Matthey +1.48%. Thus, the STOXX 600 +0.58%, CAC 40 +0.57%, FTSE 100 +0.83% and DAX +0.17% closed with positive performances.

Asia:

The main Asian indices ended today's session mostly higher in a day marked by optimism over the U.S. Federal Reserve's pledge to maintain accommodative policies to boost the recovery. Thus, Chinese stocks closed positive led by the healthcare sector amid increased vaccination efforts. In South Korea, the KOSPI rose for the sixth consecutive day after Se-hoon Oh and Hyung-jun Park won elections in Seoul and Busan respectively. On the other hand, Japanese stocks closed with losses dragged down by the increase in COVID-19 cases. In this regard, Tokyo authorities requested permission from the Japanese government to impose emergency restrictive measures. In corporate stocks, SoftBank Group -0.30%, while LG Electronics +1.98 after the Nasdaq rose in the United States. Finally, the Australian stock market ended the day with gains hitting 13-month highs driven by the materials and energy sectors. Thus, Nikkei -0.07%, CSI 300 +0.17%, Shanghai Comp +0.08%, Kospi +0.19% and S&P/ASX 200 +1.02% ended the day mostly higher.

ETFs

	Curr.	Close	1D	5D	30 D	YTD	Exchange
SPDR S&P 500 ETF TRUST	USD	408.52	0.47%	1.97%	5.51%	9.27%	NYSE Arca
ISHARES MSCI EMERGING MARKET	USD	54.01	0.82%	0.28%	0.90%	4.53%	NYSE Arca
ISHARES IBOXX HIGH YLD CORP	USD	87.26	0.03%	0.22%	1.34%	-0.05%	NYSE Arca
FINANCIAL SELECT SECTOR SPDR	USD	34.85	0.03%	1.10%	3.02%	18.22%	NYSE Arca
VANECK GOLD MINERS	USD	34.73	2.36%	3.36%	7.52%	-3.58%	NYSE Arca
ISHARES RUSSELL 2000 ETF	USD	222.56	0.85%	-0.53%	-0.35%	13.52%	NYSE Arca
SPDR GOLD SHARES	USD	164.51	1.08%	1.56%	2.28%	-7.77%	NYSE Arca
ISHARES 20+ YEAR TREASURY BO	USD	138.01	0.83%	0.36%	-1.24%	-12.50%	NASDAQ GM
INVESTCO QQQ TRUST SERIES 1	USD	335.08	1.04%	3.24%	7.48%	6.80%	NASDAQ GM
ISHARES NASDAQ BIOTECHNOLOGY	USD	149.39	0.36%	-1.41%	-1.43%	-1.39%	NASDAQ GM
ENERGY SELECT SECTOR SPDR	USD	48.51	-1.30%	-3.58%	-6.93%	27.99%	NYSE Arca
PROSHARES ULTRA VIX ST FUTUR	USD	4.86	-2.61%	-9.83%	-42.14%	-54.37%	Cboe BZX
UNITED STATES OIL FUND LP	USD	40.82	-0.10%	-2.44%	-5.31%	23.66%	NYSE Arca
ISHARES MSCI BRAZIL LP	USD	34.34	1.84%	5.27%	9.85%	-7.36%	NYSE Arca
SPDR S&P OIL & GAS EXP & PR	USD	80.05	-2.15%	-6.44%	-7.24%	36.84%	NYSE Arca
UTILITIES SELECT SECTOR SPDR	USD	64.89	-0.08%	1.42%	5.82%	3.49%	NYSE Arca
ISHARES US REAL ESTATE ETF	USD	93.97	-0.24%	0.42%	7.28%	9.71%	NYSE Arca
SPDR S&P BIOTECH ETF	USD	132.57	0.62%	-3.25%	-6.11%	-5.83%	NYSE Arca
ISHARES IBOXX INVESTMENT GRA	USD	131.06	0.37%	0.34%	1.19%	-5.12%	NYSE Arca
ISHARES JP MORGAN USD EMERGI	USD	109.88	0.58%	0.45%	1.76%	-5.20%	NASDAQ GM
REAL ESTATE SELECT SECT SPDR	USD	40.28	-0.49%	0.40%	7.59%	10.18%	NYSE Arca
ISHARES CHINA LARGE-CAP ETF	USD	47.11	1.31%	-0.72%	-2.16%	1.46%	NYSE Arca
CONSUMER STAPLES SPDR	USD	69.04	0.10%	1.56%	6.35%	2.36%	NYSE Arca
VANECK JR GOLD MINERS	USD	48.86	3.54%	4.58%	5.30%	-9.92%	NYSE Arca
SPDR BBG BARC HIGH YIELD BND	USD	108.98	0.04%	0.31%	1.34%	0.04%	NYSE Arca
VANGUARD REAL ESTATE ETF	USD	93.85	-0.37%	0.34%	6.42%	10.50%	NYSE Arca
GRAYSCALE BITCOIN TRUST BTC	USD	49.05	3.11%	-3.57%	-0.14%	53.28%	OTC US



Source: Bloomberg

LIMA

Stocks

Ticker	Currency	Price	1D*	5D*	30D*	YTD*	Frequency	Volume (US\$)	Beta	Dividend Yield (%)	Price Earning	Market Cap. (M US\$)	Economic Sector*	Index Weight
▼ ALICORC1 PE**	S/.	7.74	-0.35%	-0.68%	-1.19%	-1.91%	100.00%	421,211	0.68	3.23	20.21	1,835.05	Industrial	3.53%
ATACOB1 PE**	S/.	0.15	0.00%	0.00%	-2.63%	7.25%	44.44%	929	1.09	0.00	-	38.86	Mining	1.02%
▲ BACKUS1 PE**	S/.	23.20	0.87%	2.65%	-0.22%	15.14%	94.44%	12,896	0.54	1.51	11.13	8,824.90	Industrial	0.82%
▲ BAP PE**	US\$	153.00	5.88%	11.35%	0.07%	-4.73%	100.00%	1,031,344	1.64	5.75	-	14,440.49	Diverse	5.82%
▲ BVN PE**	US\$	10.50	3.65%	5.00%	-7.89%	-12.50%	100.00%	428,852	1.17	0.00	-	2,894.16	Mining	5.88%
▲ CASAGRC1 PE**	S/.	6.37	1.92%	5.12%	7.97%	34.11%	88.89%	88,161	0.54	3.55	11.44	149.14	Agricultural	1.31%
▼ BBVAC1 PE**	S/.	2.48	-1.20%	2.48%	4.20%	14.29%	100.00%	177,414	0.66	3.48	25.95	4,500.50	Finance	2.85%
▲ CORAREI1 PE**	S/.	1.24	5.08%	5.98%	8.77%	39.33%	100.00%	19,218	0.55	5.63	7.39	427.90	Industrial	1.72%
▼ CPACASC1 PE**	S/.	5.74	-1.03%	-1.88%	-5.28%	8.30%	94.44%	268,832	0.60	4.01	41.00	740.49	Industrial	2.38%
▲ CVERDEC1 PE**	US\$	26.20	3.76%	4.80%	3.56%	25.24%	100.00%	417,404	0.89	0.00	33.41	9,171.47	Mining	5.25%
▼ ENGEPEC1 PE**	S/.	2.52	-1.18%	-3.08%	-2.33%	26.00%	83.33%	1,401,906	0.50	8.73	15.40	1,988.29	Public Services	1.44%
▲ ENDISPC1**	S/.	6.10	0.83%	0.83%	1.67%	12.96%	44.44%	8,513	0.48	0.00	14.30	1,082.64	Public Services	0.98%
▲ FERREYC1 PE**	S/.	2.25	0.45%	1.35%	3.21%	29.31%	100.00%	485,752	0.57	3.41	14.96	610.16	Diverse	4.90%
- AENZAC1 PE**	S/.	1.82	0.00%	1.11%	4.00%	4.60%	88.89%	57,981	0.81	0.00	-	441.06	Diverse	4.05%
▲ IFS PE**	US\$	32.00	3.86%	5.96%	3.23%	3.43%	100.00%	206,177	1.26	5.47	34.63	3,694.33	Diverse	7.22%
▼ INRETC1 PE**	US\$	41.40	-1.43%	-2.13%	-8.00%	5.61%	100.00%	715,296	0.65	1.36	50.53	4,256.22	Diverse	5.28%
▲ LUSURC1 PE**	S/.	15.39	3.29%	5.41%	-23.81%	-39.65%	100.00%	21,306	0.54	4.54	15.50	2,082.93	Public Services	1.81%
▲ MINSUR1 PE**	S/.	2.92	2.10%	6.18%	1.39%	57.84%	94.44%	86,248	0.79	0.00	80.26	2,339.80	Mining	3.09%
▲ PML PE**	US\$	0.16	3.21%	4.55%	11.81%	51.89%	72.22%	59,891	1.45	0.00	-	42.53	Mining	2.12%
▼ RELAPAC1 PE**	S/.	0.13	-1.52%	0.78%	3.17%	88.41%	94.44%	34,248	0.49	0.00	-	300.59	Industrial	2.12%
▲ SCCO PE**	US\$	72.36	1.63%	5.60%	-1.30%	9.80%	88.89%	30,141	0.96	2.35	33.64	55,939.58	Mining	2.14%
▲ SIDERC1 PE**	S/.	1.18	4.42%	8.26%	15.69%	38.82%	88.89%	31,053	0.80	23.47	9.44	402.72	Industrial	1.43%
▲ TV PE**	US\$	0.17	4.40%	8.50%	16.90%	12.93%	94.44%	136,716	1.47	0.00	-	164.19	Mining	2.93%
▲ UNACEMC1 PE**	S/.	1.74	1.16%	1.16%	-5.43%	12.26%	94.44%	71,885	0.82	0.75	38.12	879.27	Industrial	3.00%
▼ VOLCABC1 PE**	S/.	0.83	-1.19%	-1.19%	-4.60%	59.62%	100.00%	204,787	0.87	0.00	-	940.42	Mining	5.90%
▲ NEXAPEC1 PE**	S/.	3.43	1.78%	0.00%	-13.16%	21.20%	72.22%	7,327	1.12	0.00	-	1,260.63	Mining	1.56%

Quantity of shares: 26

Source: Bloomberg, Economática

* Bloomberg Industry Classification System

** PER is used in the stock market and original currency of the instrument

*Legend: Variation 1D: 1 Day; 5D: 5 Days, 1M: 1 Month; YTD: Var.% 12/31/20 to date

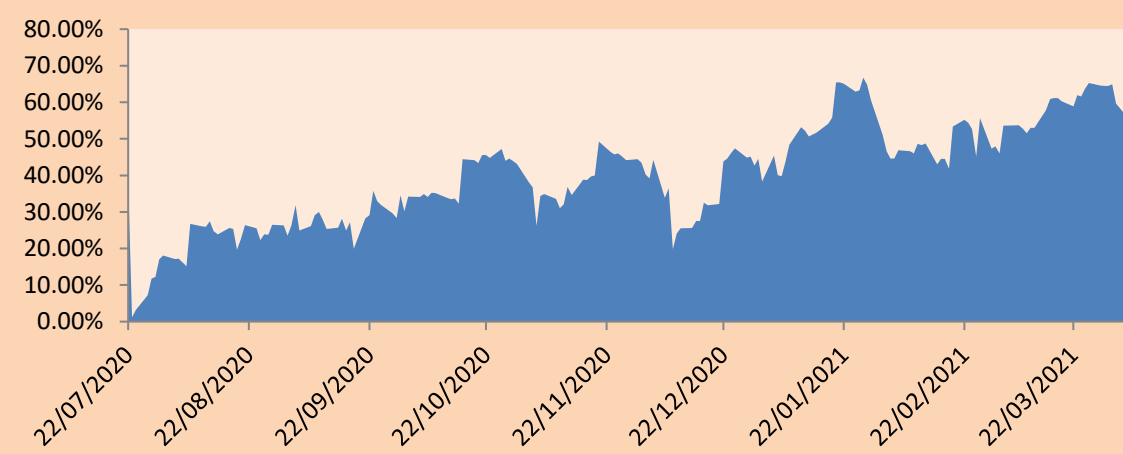
Sectorial Indices

	Close	1D*	5D*	30D*	YTD*	Beta
▲ S&P/BVLMining	420.35	1.75%	1.30%	-5.16%	7.80%	0.95
▼ S&P/BVLConsumer	1,177.36	-0.63%	-1.84%	-6.05%	8.15%	0.40
▲ S&P/BVLIndustrials	222.07	0.39%	0.80%	-0.19%	16.54%	0.49
▲ S&P/BVLFinancials	993.72	4.98%	6.17%	-2.14%	-3.89%	1.77
▲ S&P/BVLConstruction	231.67	0.41%	0.56%	-1.73%	10.78%	0.53
▼ S&P/BVLPublicSvcs	653.23	-0.23%	-0.86%	1.03%	6.37%	0.13
▼ S&P/BVLElectricUtil	637.71	-0.23%	-0.86%	1.03%	6.37%	0.13

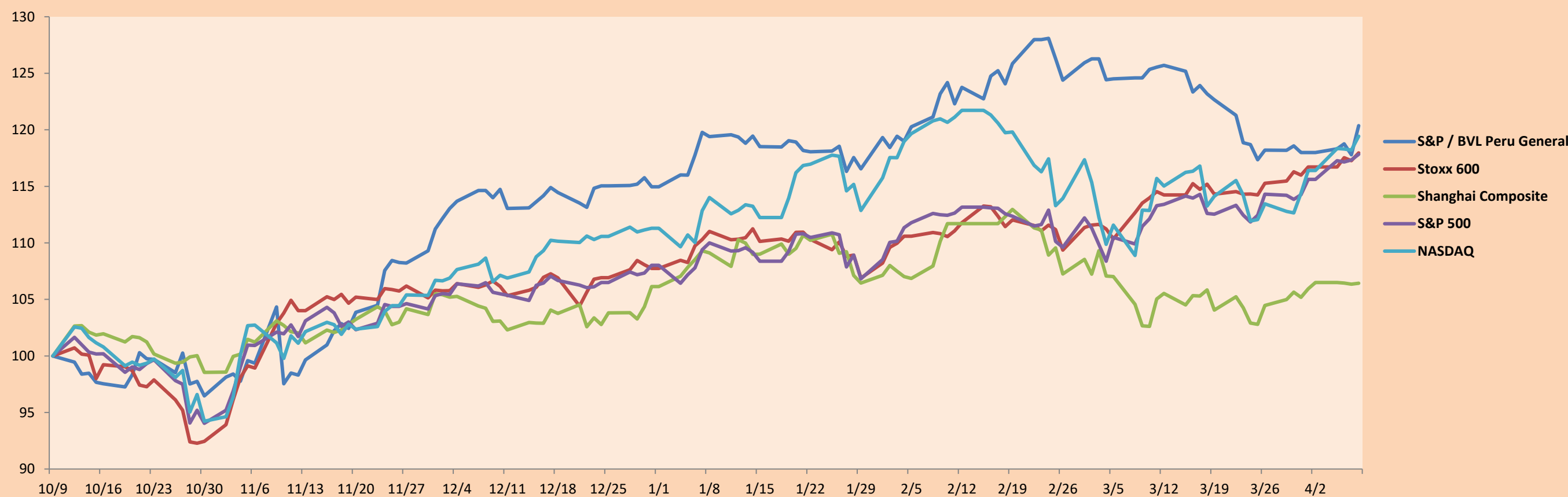
S&P/BVLConstructionTRPEN

*Legend: Variation 1D: 1 Day; 5D: 5 Days, 1M: 1 Month; YTD: Var.% 12/31/20 to date

Correlation Graph of Returns of Mining Index against Metallic Index of London (3 months)



Indices (6 months)



Base: 09/10/20=100
Source: Bloomberg

Capital Market Laboratory Coordinator: Economist Bruno Bellido
Collaboration: María Camarena, Alonso García, Adrian Paredes y Jairo Valverde
email: pulsobursatil@ulima.edu.pe
facebook: www.facebook.com/pulsobursatil.ul

SOVEREIGN RATING

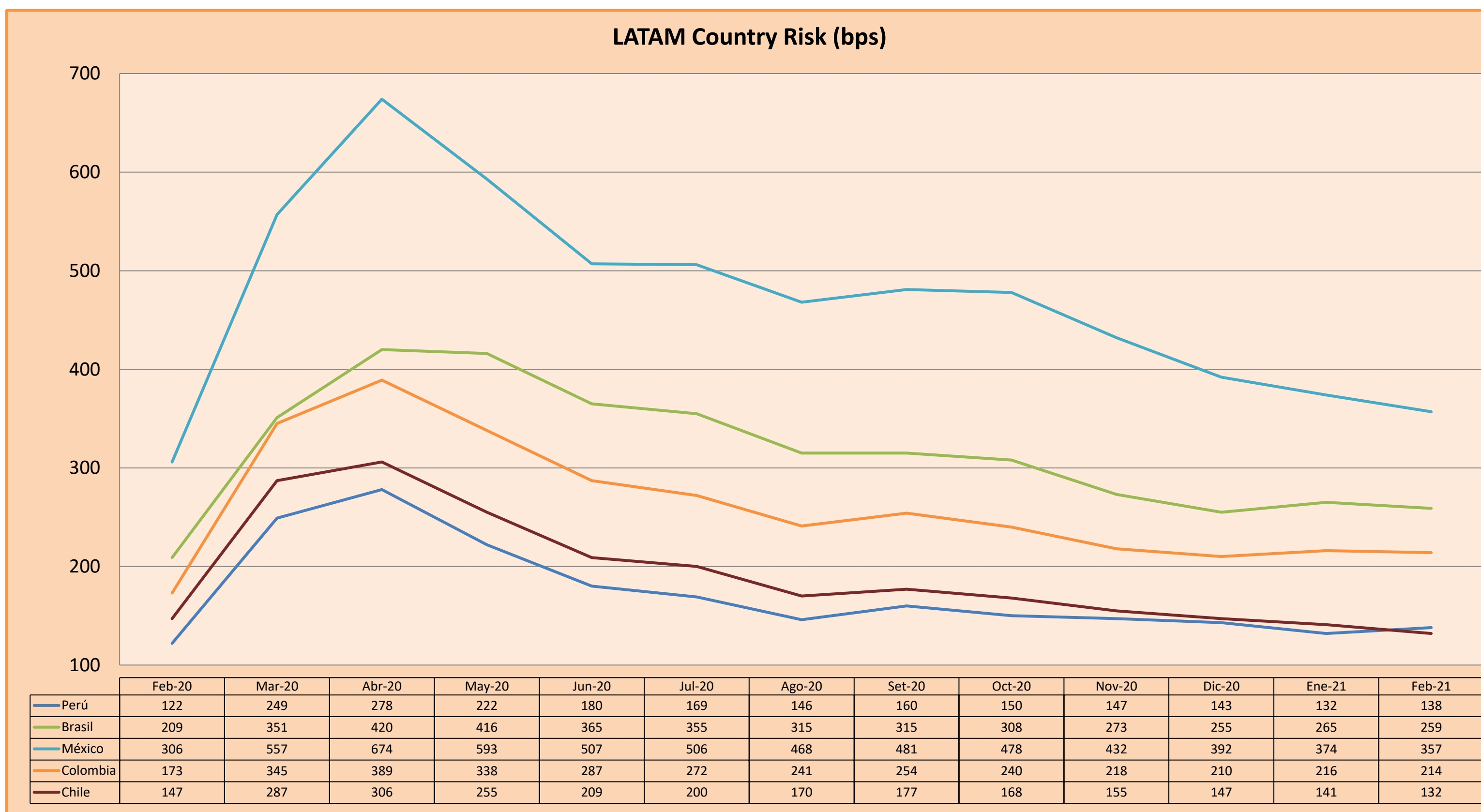
RISK RATINGS

Moody's	S&P	Fitch	
Aaa	AAA	AAA	Prime
Aa1	AA+	AA+	High credit quality
Aa2	AA	AA	
Aa3	AA-	AA-	
A1	A+	A+	Medium-high grade, with low credit risk
A2	A	A	
A3	A-	A-	
Baa1	BBB+	BBB+	Moderate Credit Risk
Baa2	BBB	BBB	
Baa3	BBB-	BBB-	
Ba1	BB+	BB+	It has speculative elements and it is subject to substantial credit risk
Ba2	BB	BB	
Ba3	BB-	BB-	
B1	B+	B+	It is considered speculative and it has high credit risk
B2	B	B	
B3	B-	B-	
Caa1	CCC+	CCC	Bad credit conditions and it is subject to high credit risk
Caa2	CCC		
Caa3	CCC-		
Ca	CC	DDD	Very close to default or in default
	C		
C	D		

Source: Bloomberg

Latin America Credit Rating			
Clasificadora de riesgo			
Country	Moody's	Fitch	S&P
Peru	A3	BBB+	BBB+
México	Ba2	BB-	BB-
Venezuela	C	WD	SD
Brazil	Ba2	BB-	BB-
Colombia	Baa2	BBB-	BBB-
Chile	A1	A-	A
Argentine	Ca	WD	CCC+
Panama	Baa2	BBB-	BBB

Source: Bloomberg



Source: BCRP

Capital Market Laboratory Coordinator: Economist Bruno Bellido
Collaboration: Maria Camarena, Alonso García, Adrian Paredes y Jairo Valverde
email: pulsobursatil@ulima.edu.pe
facebook: www.facebook.com/pulsobursatil.ul