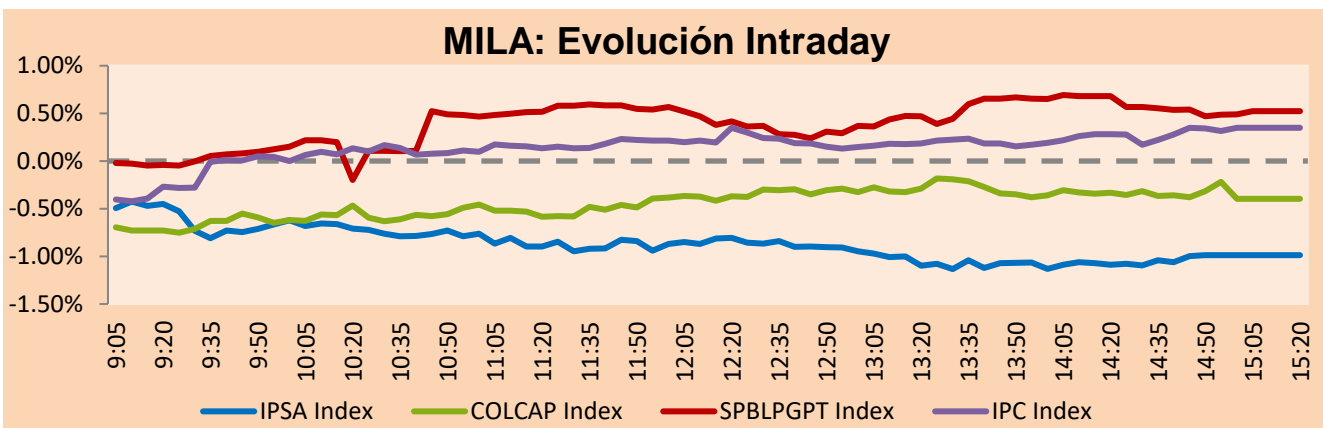


MILA

Lima, April 13, 2021

Main Indexes	Close	1 D	5 D	1 M	YTD	Cap. Burs. (US\$ bill)
▼ IPSA (Chile)	4,901.91	-0.97%	0.85%	0.18%	17.35%	137.49
▼ IGPA (Chile)	24,726.67	-0.88%	0.72%	0.42%	17.70%	165.20
▲ COLSC (Colombia)	1,020.84	0.10%	-1.88%	-3.08%	-3.60%	5.18
▼ COLCAP (Colombia)	1,312.55	-0.40%	-0.89%	-3.04%	-8.72%	77.38
▲ S&P/BVL (Perú)*	21,436.43	0.57%	-0.34%	-5.85%	2.95%	108.41
▲ S&P/BVL SEL (Perú)	566.15	0.60%	-0.73%	-6.75%	2.67%	95.70
▲ S&P/BVL LIMA 25	28,609.60	0.66%	-0.66%	-3.88%	13.54%	107.39
▲ IPC (México)	47,503.71	0.32%	-1.00%	-0.56%	7.80%	298.33
▼ S&P MILA 40	555.02	-0.18%	0.48%	-1.97%	3.81%	5,994.79

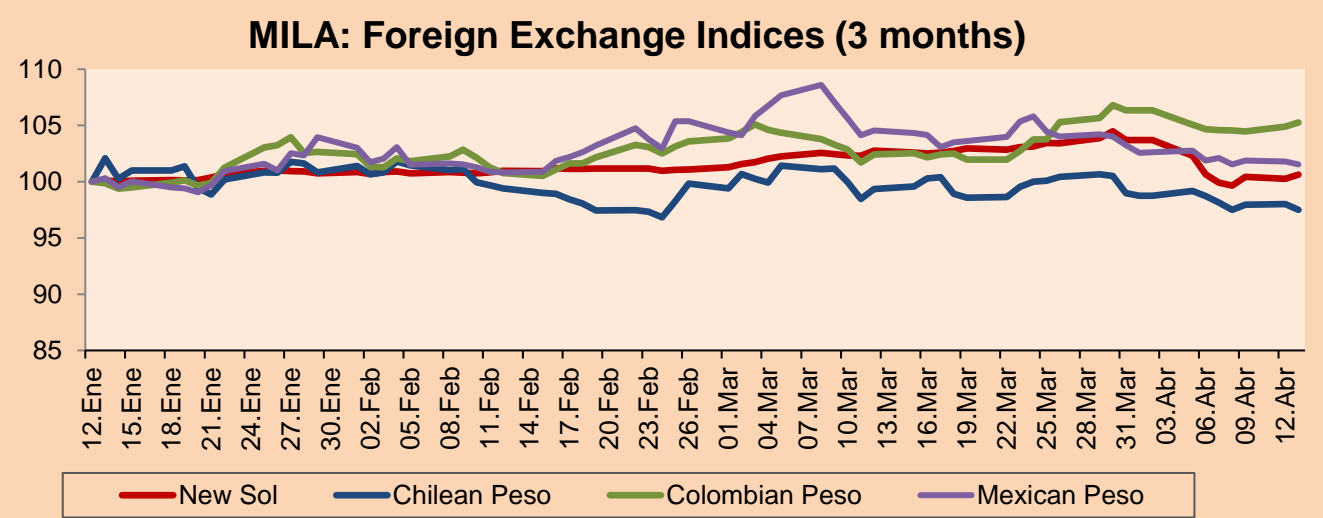
*Legend: Variation 1D: 1 day; 5D: 5 days; 1M: 1 Month; YTD: Var% 12/31/20 to date



Source: Bloomberg

Currency	Price	1D*	5D*	30 D*	YTD*
▲ Sol (PEN)	3,632.9	0.36%	-0.02%	-2.08%	0.41%
▼ Chilean Peso (CLP)	708.42	-0.52%	-1.22%	-1.85%	-0.47%
▲ Colombian Peso (COP)	3,666.46	0.35%	0.56%	2.75%	6.90%
▼ Mexican Peso (MXN)	20.09	-0.26%	-0.34%	-2.89%	0.91%

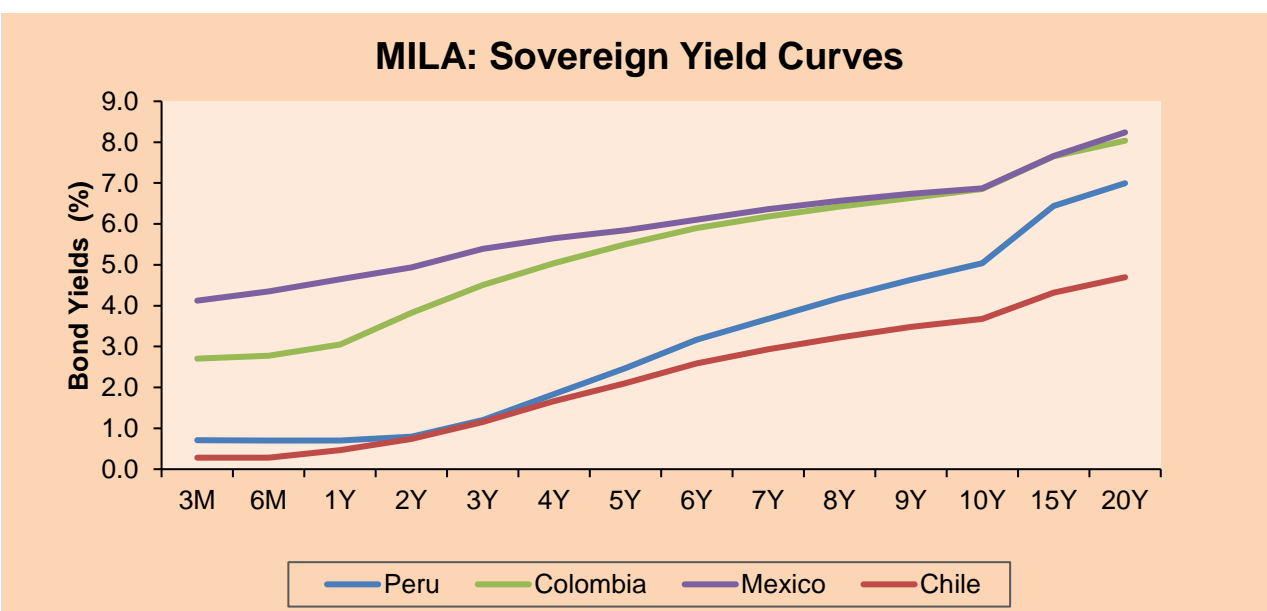
*Legend: Variation 1D: 1 day; 5D: 5 days; 1M: 1 Month; YTD: Var% 12/31/20 to date



Base: 12/21/21=100

Source: Bloomberg

Fixed Income	Currency	Price	Bid Yield (%)	Ask Yield (%)	Duration
PERU 7.35 07/21/25	USD	123.793	1.61	1.51	3.74
PERU 4.125 08/25/27	USD	111.748	2.18	2.10	5.69
PERU 8.75 11/21/33	USD	155.891	3.33	3.26	8.68
PERU 6.55 03/14/37	USD	136.017	3.60	3.53	10.51
PERU 5.625 11/18/2050	USD	133.476	3.76	3.72	16.36
CHILE 2.25 10/30/22	USD	102.752	0.58	0.54	1.51
CHILE 3.125 01/21/26	USD	108.24	1.38	1.29	4.46
CHILE 3.625 10/30/42	USD	105.71	3.27	3.24	15.29
COLOM 11.85 03/09/28	USD	158.837	2.67	2.35	5.30
COLOM 10.375 01/28/33	USD	153.85	4.56	4.36	7.84
COLOM 7.375 09/18/37	USD	133.798	4.49	4.41	10.62
COLOM 6.125 01/18/41	USD	120.712	4.56	4.50	12.30
MEX 4 10/02/23	USD	120.712	4.558	4.497	12.3
MEX5.55 01/45	USD	116.433	4.44	4.41	14.03



Source: Bloomberg

Equity

Largest gains	Exchange	Currency	Price	▲%	Largest losses	Exchange	Currency	Price	▼%
CREDICORP LTD	Peru	USD	153.00	5.88	ORBITA ADVANCE CO	Mexico	MXN	53.58	-2.95
CONCHATORO	Chile	CLP	1295.00	4.60	ECOPETROL	Colombia	COP	2281	-2.40
FIBRA UNO	Mexico	MXN	25.24	3.91	GRUPO ENERGIA BO	Colombia	COP	2636	-2.30
BUENAVENTURA-ADR	Peru	USD	10.50	3.65	GRUPO MEXICO-B	Mexico	MXN	103.18	-2.00
WALMART DE MEXIC	Mexico	MXN	66.11	3.35	GRUPO NUTRESA SA	Colombia	COP	22920	-1.67

Per Turnover	Exchange	Amount (US\$)
GRUPO MEXICO-B	Mexico	88,528,086
ENEL AMERICAS SA	Chile	66,394,989
GRUPO F BANORT-O	Mexico	42,426,103
BANCO SANTANDER	Chile	34,237,902
AMERICA MOVIL-L	Mexico	33,706,264

Per Volume	Exchange	Volume
BANCO SANTANDER	Chile	546,318,229
ENEL AMERICAS SA	Chile	387,760,411
ITAU CORPBANCA	Chile	145,776,621
ENEL CHILE SA	Chile	75,071,700
AMERICA MOVIL-L	Mexico	46,991,843

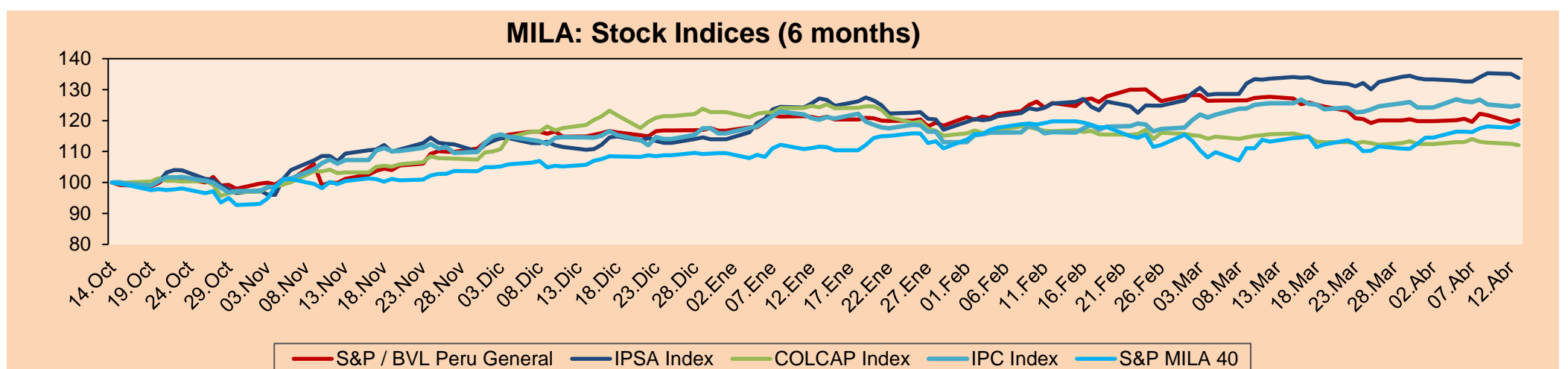
MILA

Peru: The General Index of the BVL ended today's session with a positive result of + 0.57%. The index maintains an annual accumulated positive trend of + 2.95% in local currency, while the adjusted return in dollars amounts to + 2.53%. Then, the S&P / BVL Peru SEL varied by + 0.60% while the S&P / BVL LIMA 25 by + 0.66%. The PEN spot reached S / 3.6329. Headline: ProInversión approved Addendum 13 of Majes Siguas II and investment would reach \$ 650 million.

Chile: The IPSA index ended the day with a negative return of -0.97%. The most affected sectors of the day were Public Services (-1.94%) and Real Estate (-1.55%). The worst performing stocks were AES Gener SA (-2.70%) and Cencosud Shopping SA (-2.56%). Headline: Agreements to postpone suppliers increased during March.

Colombia: The COLCAP index closed today with a negative return of -0.40%. The most affected sectors of the day were Finance (-0.44%) and Materials (-1.16%). The worst performing stocks were BanColombia SA (-1.87%) and Cemento Argos (-0.65%). Headline: Credit card fees, hard to go down

Mexico: The IPC index closed the day with a positive return of + 0.32%. The most affected sectors of the day were Real Estate (-1.73%) and Materials (-0.64%). The worst performing stocks were Mexichem SAB de CV (-1.87%) and Corp Inmobiliaria Vesta SAB (-1.73%). Owner: Outsourcing reform approved in commissions; goes to plenary session in San Lázaro

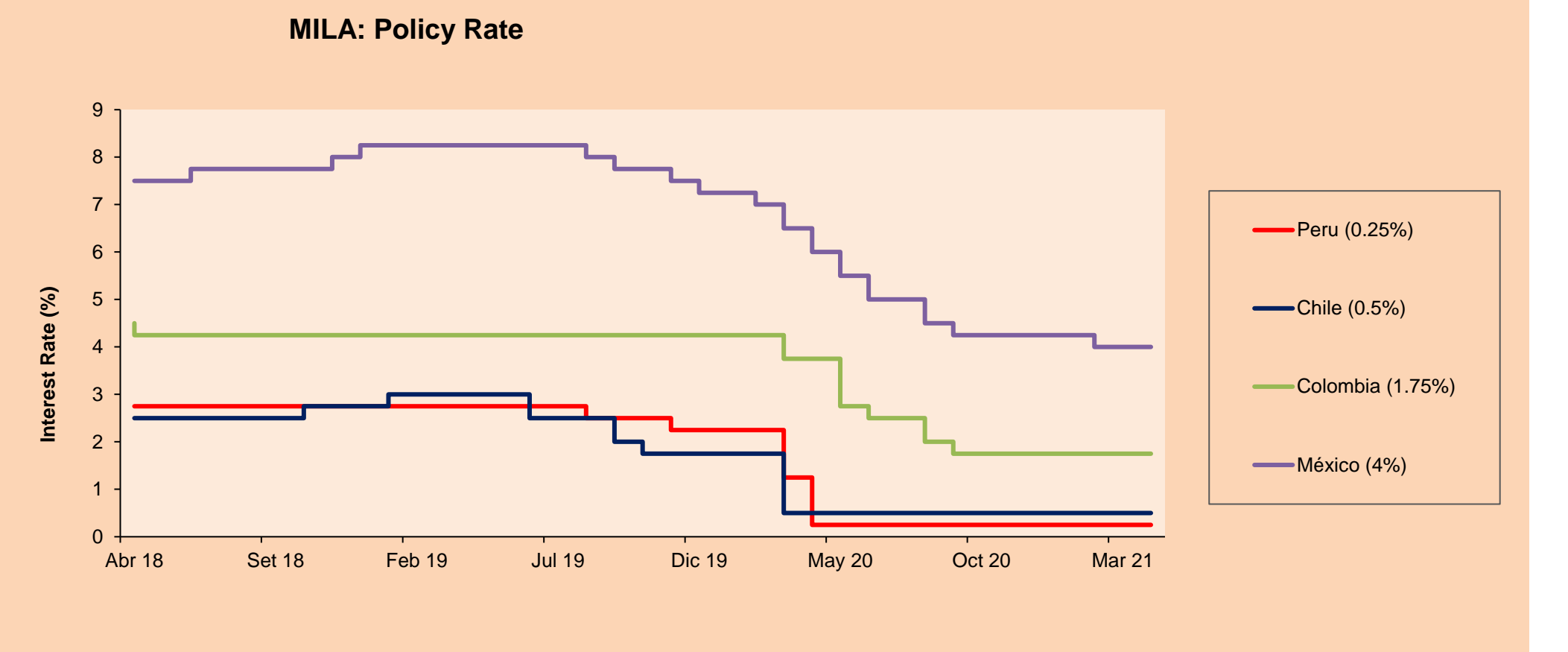


Base: 15/10/20=100

Source: Bloomberg

ETFs

ETFs	Curr.	Close	1D	5D	30 D	YTD	Exchange
▼ iShares MSCI All Peru Caped Index Fund	USD	35.7	-0.05%	-0.12%	-3.17%	2.94%	NYSE Arca
▼ iShares MSCI All Chile Caped Index Fund	USD	34.79	-0.14%	1.43%	2.14%	15.16%	Cboe BZX
▲ Global X MSCI Colombia	USD	10.175	-0.58%	-1.36%	-4.10%	-10.43%	NYSE Arca
▲ iShares MSCI Mexico Capped	USD	45.27	0.69%	-0.20%	3.29%	5.30%	NYSE Arca
▲ iShares MSCI Emerging Markets	USD	53.45	0.41%	-1.69%	-1.00%	3.44%	NYSE Arca
▲ Vanguard FTSE Emerging Markets	USD	51.87	0.02%	-1.91%	-1.89%	3.51%	NYSE Arca
▲ iShares Core MSCI Emerging Markets	USD	64.59	0.37%	-1.54%	-0.74%	4.11%	NYSE Arca
▼ iShares JP Morgan Emerging Markets Bonds	USD	62.79	-0.13%	-1.26%	-0.17%	2.80%	Cboe BZX
▲ Morgan Stanley Emerging Markets Domestic	USD	6.02	0.50%	0.00%	1.52%	-4.29%	New York

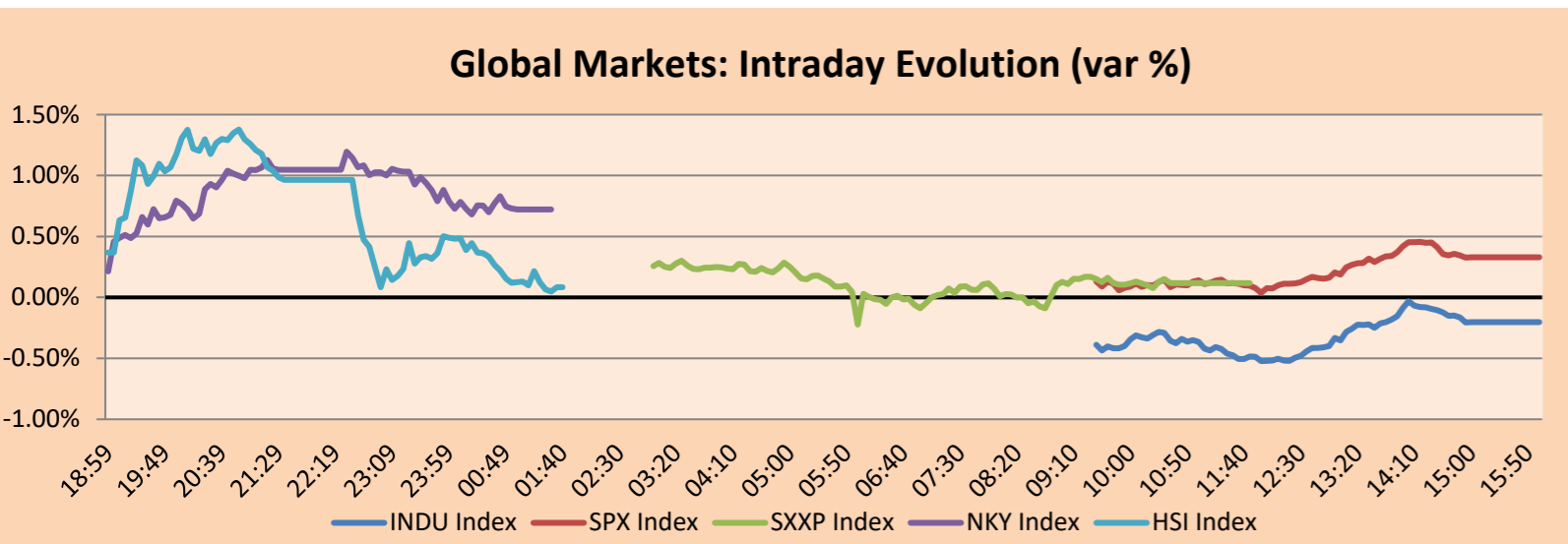


Source: Bloomberg

WORLD

Main Indices	Close	1 D*	5 D*	1 M*	YTD*	Market Cap. (US\$ Mill.)
▼ Dow Jones (USA)	33,677.27	-0.20%	0.74%	2.74%	10.03%	10,296,265
▲ Standard & Poor's 500 (EEUU)	4,141.59	0.33%	1.66%	5.03%	10.26%	36,640,250
▲ NASDAQ Composite (USA)	13,996.10	1.06%	2.17%	5.08%	8.60%	22,886,365
▲ Stoxx EUROPE 600 (Europe)	435.75	0.12%	0.11%	2.99%	9.20%	10,034,657
▲ DAX (Germany)	15,234.36	0.13%	0.14%	5.05%	11.05%	1,158,321
▲ FTSE 100 (United Kingdom)	6,890.49	0.02%	0.98%	1.91%	6.66%	1,452,579
▲ CAC 40 (France)	6,184.10	0.36%	0.86%	2.27%	11.40%	1,694,426
▼ IBEX 35 (Spain)	8,525.10	-0.09%	-1.27%	-1.38%	5.59%	474,194
▲ MSCI AC Asia Pacific Index	205.92	0.26%	-0.67%	-0.90%	3.00%	25,774,271
▲ HANG SENG (Hong kong)	28,497.25	0.15%	-1.53%	0.11%	5.73%	4,339,726
▼ SHANGHAI SE Comp. (China)	3,396.47	-0.48%	-2.48%	-1.43%	-2.06%	6,403,430
▲ NIKKEI 225 (Japan)	29,751.61	0.72%	0.19%	-0.23%	8.04%	4,021,188
▲ S&P / ASX 200 (Australia)	6,976.92	0.04%	1.32%	3.43%	6.25%	1,704,033
▲ KOSPI (South Korea)	3,169.08	0.32%	-1.00%	3.78%	10.31%	1,896,825

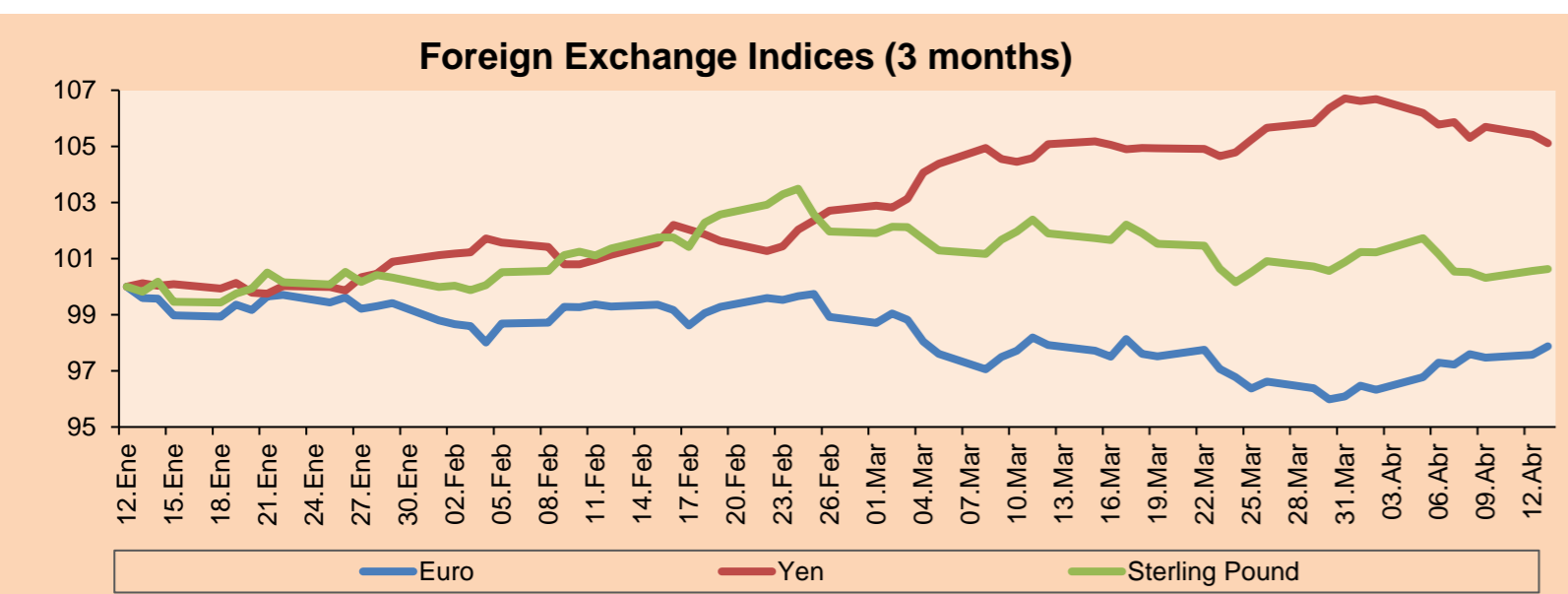
*Legend: Variation 1D: 1 Day; 5D: 5 Days; 1M: 1 Month; YTD: Var.% 12/31/20 to date



Source: Bloomberg

Currency	Price	1 D*	5 D*	1 M*	YTD*
▲ Euro	1.1948	0.31%	0.61%	-0.04%	-2.19%
▼ Yen	109.0600	-0.29%	-0.63%	0.03%	5.63%
▲ Sterling Pound	1.3750	0.07%	-0.54%	-1.25%	0.59%
▼ Yuan	6.5441	-0.06%	0.07%	0.55%	0.26%
▼ Hong Kong Dollar	7.7733	-0.01%	-0.04%	0.13%	0.26%
▼ Brazilian Real	5.7184	-0.29%	2.27%	2.92%	10.00%
▲ Argentine Peso	92.6231	0.05%	0.37%	1.94%	10.07%

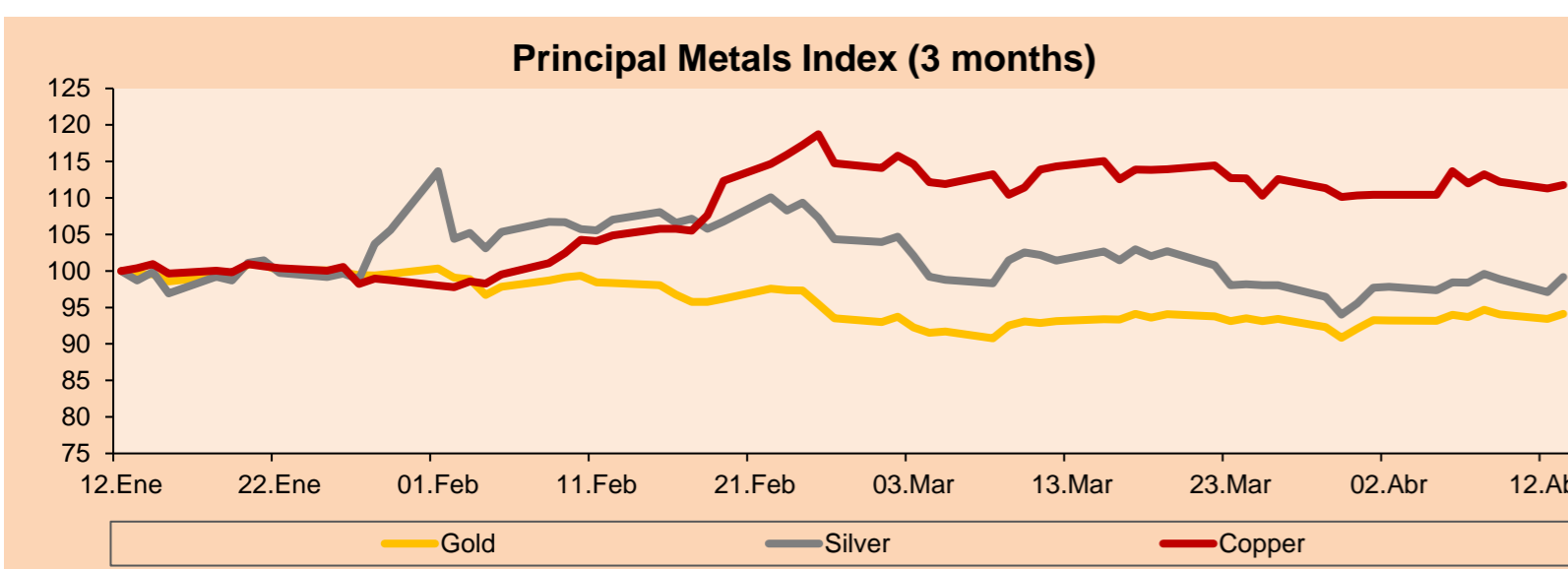
*Legend: Variation 1D: 1 Day; 5D: 5 Days; 1M: 1 Month; YTD: Var.% 12/31/20 to date



Base: 12/01/21=100
Source: Bloomberg

Commodities	Close	1 D*	5 D*	1 M*	YTD*
▲ Oro (US\$ Oz. T) (LME)	1,745.51	0.74%	0.13%	1.07%	-8.05%
▲ Plata (US\$ Oz. T) (LME)	25.35	2.14%	0.74%	-2.20%	-4.00%
▲ Cobre (US\$ TM) (LME)	8,901.50	0.42%	-1.68%	-2.22%	14.87%
▲ Zinc (US\$ TM) (LME)	2,762.55	1.03%	-1.54%	-0.71%	1.22%
▲ Petróleo WTI (US\$ Barril) (NYM)	60.18	0.80%	1.43%	-8.32%	23.60%
▲ Estaño (US\$ TM) (LME)	27,340.00	0.67%	-1.57%	-3.22%	33.08%
▲ Plomo (US\$ TM) (LME)	1,964.25	0.51%	0.94%	1.45%	-0.58%
▲ Azúcar #11 (US\$ Libra) (NYB-ICE)	15.50	0.91%	3.13%	-1.40%	9.23%
▲ Cacao (US\$ TM) (NYB-ICE)	2,441.00	1.67%	0.66%	-5.53%	-2.79%
▲ Café Arábica (US\$ TM) (NYB-ICE)	131.95	1.50%	2.53%	-2.22%	0.08%

*Leyenda: Variación 1D: 1 Día; 5D: 5 Días; 1M: 1 Mes; YTD: Var.% 31/12/20 a la fecha



Base: 12/01/21=100
Source: Bloomberg

Equity

Germany (Stocks from DAX Index)

Largest gains	Curr.	Price	▲ %	Exchange	Largest losses	Curr.	Price	▼ %	Exchange
ADS GY	EUR	280.45	-0.41	Xetra	DAI GY	EUR	75.65	-0.42	Xetra
RWE GY	EUR	34.22	-0.90	Xetra	BAS GY	EUR	71.14	0.08	Xetra
DB1 GY	EUR	148.2	0.47	Xetra	DBK GY	EUR	10.272	-0.95	Xetra
SAP GY	EUR	112.16	0.83	Xetra	CON GY	EUR	113.94	1.91	Xetra

Europe (Stocks from STOXX EUROPE 600)

Largest gains	Curr.	Price	▲ %	Exchange	Largest losses	Curr.	Price	▼ %	Exchange
GRF SQ	EUR	23.54	1.07	Soc.Bol SIBE	CDR PW	PLN	186.5	0.00	Warsaw
EXP LN	GBp	2646	-0.08	Londres	CCL LN	GBp	1670.2	-0.54	Londres
PUM GY	EUR	92	0.31	Xetra	RNO FP	EUR	35.1	-1.83	EN Paris
SGE LN	GBp	652.6	0.87	Londres	DUFN SE	CHF	63.6	0.86	SIX Swiss Ex

Global Overview:

United States:

Major U.S. indices ended today's session mixed after U.S. federal health officials paused the launch of Johnson & Johnson's vaccine, which closed down -1.34%. In economic data, the March CPI increased 2.6% from March of last year; however, the increase remains pronounced in the food and energy sectors, diminishing inflation concerns. On the other hand, technology stocks continued their advances, offsetting the decline of the S&P 500 and the Nasdaq. However, cyclical stocks suffered a contraction after the federal agencies recommended a pause to the vaccine launch. In individual stocks, Coinbase will be launched on the market tomorrow; with a market valuation around 100 billion. It would thus become one of the 85 most valuable American companies, its exit furthermore, propelled Bitcoin to a new high near \$64,000. Thus, DOW JONES -0.20% ended lower while Nasdaq +1.05% and S&P 500 closed the day with gains.

Europe:

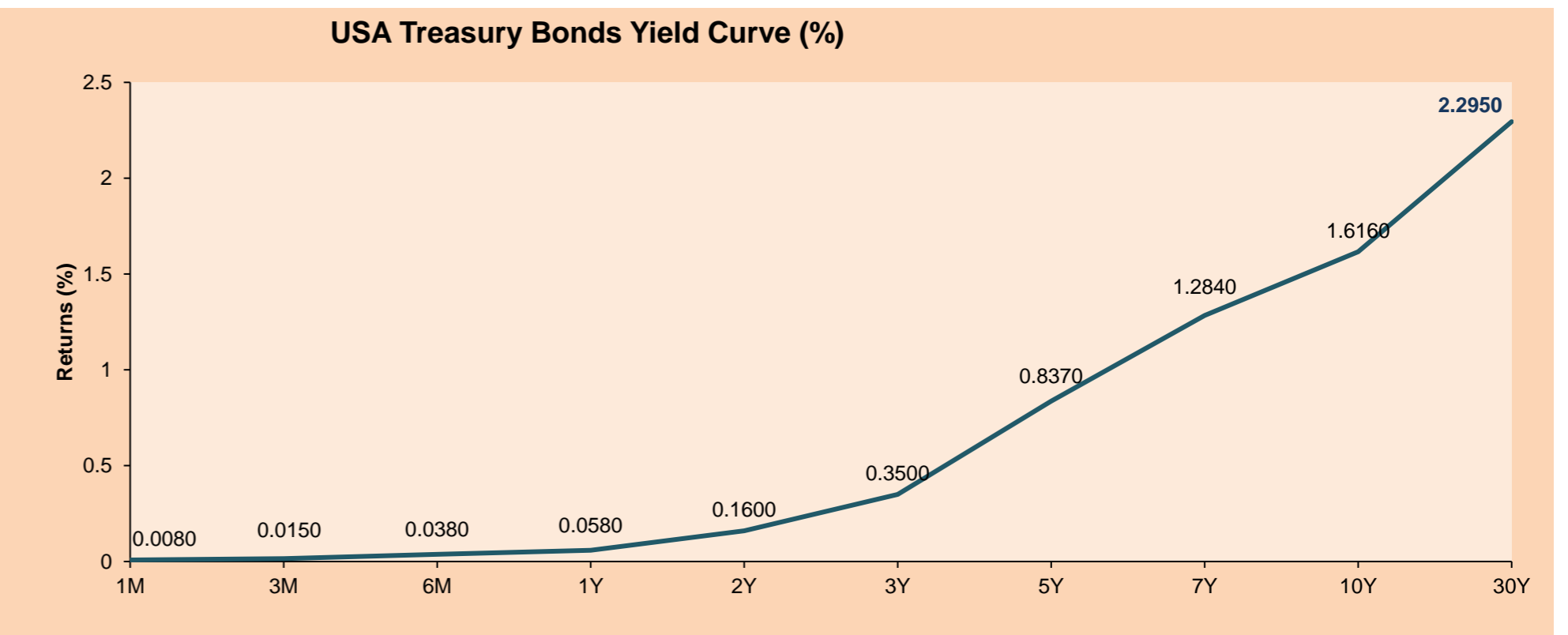
Major European markets ended the day higher as European stocks pause near all-time highs, which are pending US inflation data. The STOXX 600 has risen to all-time highs this month, despite pressure from rising bond yields as there was no adjustment from central banks despite strong fears of rising inflation. DAX index closed higher, thanks to the fact that data from China showed an increase in exports and an increase in imports, which reached its highest level in recent years. On the other hand, Johnson & Johnson announced that it would delay the launch of its vaccine for COVID-19 in Europe and was reviewing cases of extremely rare blood clots in people after receiving the injection, which happened with the AstraZeneca vaccine. Lastly, TI Dustin was up 17.4% after it said it would buy Centralpoint, a hardware and software vendor, for € 425 million. Thus, STOXX 600 + 0.12%, FTSE 100 + 0.02%, CAC 40 + 0.36%, DAX + 0.13% closed higher.

Asia:

Major Asian indexes posted mixed results, due to concerns caused by the downturn in aviation and an increase in the acceleration of vaccinated people in some countries. Chinese indices were mostly positive as financial firms rebounded from two days of declines and after last month's business results boosted investor confidence. In Japan, there was a rise in stock market shares driven by the pulp and paper, rail and bus, and real estate sectors. The best performing stocks were Nippon Sheet Glass Co. Ltd. +6.77% and Takashimaya Co. Ltd.+4.28%. In India, stocks closed higher by more than 1% after the government began approving foreign COVID19 vaccines on a more accelerated basis. Finally, South Korea achieved one of the best stock rallies in the last 3 months on the back of technology momentum and foreign investments. Thus, S&P / ASX 200 -0.06%, KOSPI +1.07%, Nikkei +0.72%, CSI 300 -0.41%, Hang Seng +0.15%, Nifty 50 +1.36% closed mixed.

ETFs

	Curr.	Close	1D	5D	30 D	YTD	Exchange
SPDR S&P 500 ETF TRUST	USD	412.86	0.30%	1.66%	4.77%	10.43%	NYSE Arca
ISHARES MSCI EMERGING MARKET	USD	53.45	0.41%	-1.69%	-1.00%	3.44%	NYSE Arca
ISHARES IBOXX HIGH YLD CORP	USD	87.17	0.07%	-0.10%	0.82%	-0.15%	NYSE Arca
FINANCIAL SELECT SECTOR SPDR	USD	34.97	-0.93%	0.87%	0.58%	18.62%	NYSE Arca
VANECK GOLD MINERS	USD	34.56	1.77%	0.82%	4.47%	-4.05%	NYSE Arca
ISHARES RUSSELL 2000 ETF	USD	221.14	-0.26%	-1.41%	-5.33%	12.79%	NYSE Arca
SPDR GOLD SHARES	USD	163.43	0.71%	0.13%	1.20%	-8.37%	NYSE Arca
ISHARES 20+ YEAR TREASURY BO	USD	138.48	0.75%	0.46%	1.78%	-12.20%	NASDAQ GM
SPDR QQQ TRUST SERIES 1	USD	340.60	1.17%	2.96%	7.97%	8.56%	NASDAQ GM
ISHARES NASDAQ BIOTECHNOLOGY	USD	149.21	1.85%	-1.56%	-3.58%	-1.51%	NASDAQ GM
ENERGY SELECT SECTOR SPDR	USD	47.86	0.10%	-2.29%	-10.66%	26.28%	NYSE Arca
PROSHARES ULTRA VIX ST FUTUR	USD	4.69	-1.68%	-9.81%	-39.41%	-55.96%	Cboe BZX
UNITED STATES OIL FUND LP	USD	41.40	1.22%	1.72%	-6.65%	25.42%	NYSE Arca
ISHARES MSCI BRAZIL ETF	USD	33.65	0.39%	-0.88%	1.08%	-9.23%	NYSE Arca
SPDR S&P OIL & GAS EXP & PR	USD	76.80	0.27%	-6.34%	-15.08%	31.28%	NYSE Arca
UTILITIES SELECT SECTOR SPDR	USD	65.65	1.19%	0.97%	5.19%	4.70%	NYSE Arca
ISHARES US REAL ESTATE ETF	USD	95.04	0.60%	0.89%	4.59%	10.96%	NYSE Arca
SPDR S&P BIOTECH ETF	USD	128.91	1.46%	-4.51%	-12.01%	-8.43%	NYSE Arca
ISHARES IBOXX INVESTMENT GRA	USD	131.34	0.44%	0.38%	2.04%	-4.92%	NYSE Arca
ISHARES JP MORGAN USD EMERGI	USD	110.34	0.53%	0.65%	1.73%	-4.81%	NASDAQ GM
REAL ESTATE SELECT SECT SPDR	USD	40.82	0.59%	0.96%	4.59%	11.65%	NYSE Arca
ISHARES CHINA LARGE-CAP ETF	USD	46.44	-0.06%	-2.40%	-3.45%	0.02%	NYSE Arca
CONSUMER STAPLES SPDR	USD	68.92	-0.53%	-0.32%	4.19%	2.18%	NYSE Arca
VANECK JR GOLD MINERS	USD	48.49	2.39%	1.21%	2.95%	-10.60%	NYSE Arca
SPDR BBG BARC HIGH YIELD BND	USD	108.84	0.04%	-0.08%	0.77%	-0.09%	NYSE Arca
VANGUARD REAL ESTATE ETF	USD	94.76	0.50%	0.67%	3.43%	11.57%	NYSE Arca
GRAYSCALE BITCOIN TRUST BTC	USD	54.93	6.08%	8.51%	9.86%	71.66%	OTC US



Source: Bloomberg

Capital Market Laboratory Coordinator: Economist Bruno Bellido

Collaboration: Maria Camarena, Alonso García, Nicolas Muñoz, Adrian Paredes y Jairo Valverde

email: pulsobursatil@ulima.edu.pe

facebook: www.facebook.com/pulsobursatil.ul

LIMA

Stocks

	Ticker	Currency	Price	1D*	5D*	30D*	YTD*	Frequency	Volume (US\$)	Beta	Dividend Yield (%)	Price Earning	Market Cap. (M US\$)	Economic Sector*	Index Weight
▲	ALICORC1 PE**	S/.	7.70	0.10%	-1.88%	-3.08%	-3.60%	100.00%	207,699	0.68	3.25	20.10	1,808.04	Industrial	3.53%
	ATACOB1 PE**	S/.	0.15	0.00%	1.35%	-6.25%	8.70%	38.89%	3,716	1.09	0.00	-	39.01	Mining	1.02%
▲	BACKUS1 PE**	S/.	22.95	1.86%	0.22%	-1.29%	13.90%	94.44%	23,786	0.55	1.53	11.01	8,700.68	Industrial	0.82%
▼	BAP PE**	US\$	144.92	-1.46%	-0.96%	-4.12%	-9.76%	100.00%	1,462,109	1.64	6.07	-	13,677.89	Diverse	5.82%
▲	BVN PE**	US\$	10.75	2.67%	4.88%	-6.52%	-10.42%	100.00%	76,564	1.17	0.00	-	2,963.07	Mining	5.88%
▼	CASAGRC1 PE**	S/.	6.15	-2.38%	0.00%	4.24%	29.47%	100.00%	8,391	0.56	3.67	11.04	142.60	Agricultural	1.31%
▼	BBVAC1 PE**	S/.	2.43	-0.82%	-1.62%	1.25%	11.98%	100.00%	35,475	0.64	3.55	25.43	4,367.28	Finance	2.85%
-	CORAREI1 PE**	S/.	1.19	0.00%	3.48%	4.39%	33.71%	94.44%	75,846	0.61	5.87	7.10	421.01	Industrial	1.72%
▼	CPACASC1 PE**	S/.	5.69	-0.52%	-1.90%	-4.69%	7.36%	88.89%	12,535	0.58	4.04	40.64	726.97	Industrial	2.38%
▼	CVERDEC1 PE**	US\$	23.40	-2.50%	-6.77%	-10.00%	11.85%	100.00%	92,478	0.94	2.44	29.84	8,191.31	Mining	5.25%
▲	ENGEPEC1 PE**	S/.	2.52	0.40%	-1.18%	-5.97%	26.00%	88.89%	42,961	0.49	8.73	15.40	1,969.13	Public Services	1.44%
-	ENDISPC1**	S/.	6.00	0.00%	-0.83%	0.00%	11.11%	50.00%	5,698	0.48	0.00	14.07	1,054.63	Public Services	0.98%
▼	FERREYC1 PE**	S/.	2.13	-0.93%	-4.05%	-2.29%	22.41%	100.00%	441,629	0.57	3.60	14.17	572.05	Diverse	4.90%
-	AENZAC1 PE**	S/.	1.75	0.00%	-2.78%	0.00%	0.57%	77.78%	454	0.81	0.00	-	420.01	Diverse	4.05%
▲	IFS PE**	US\$	31.70	0.96%	2.89%	1.57%	2.46%	100.00%	170,574	1.25	5.52	34.66	3,659.69	Diverse	7.22%
▼	INRETC1 PE**	US\$	40.55	-0.37%	-3.45%	-9.89%	3.44%	100.00%	122,583	0.63	1.39	50.00	4,168.84	Diverse	5.28%
▲	LUSURC1 PE**	S/.	14.25	1.79%	-4.23%	-4.55%	-44.12%	100.00%	57,866	0.61	4.90	14.35	1,910.06	Public Services	1.81%
▼	MINSUR1 PE**	S/.	2.80	-0.71%	-2.10%	-1.75%	51.35%	94.44%	124,289	0.80	0.00	76.18	2,222.03	Mining	3.09%
▼	PML PE**	US\$	0.15	-5.52%	-0.65%	6.94%	45.28%	72.22%	24,478	1.46	0.00	-	40.69	Mining	2.12%
▲	RELAPAC1 PE**	S/.	0.13	2.40%	-4.48%	-3.03%	85.51%	94.44%	11,662	0.50	0.00	-	293.11	Industrial	2.12%
▲	SCCO PE**	US\$	71.04	1.05%	-1.61%	-8.42%	7.80%	94.44%	38,272	0.96	2.39	33.02	54,919.13	Mining	2.14%
▲	SIDERC1 PE**	S/.	1.15	1.77%	2.68%	12.75%	35.29%	88.89%	185,742	0.81	24.08	9.20	388.70	Industrial	1.43%
-	TV PE**	US\$	0.16	0.00%	5.33%	6.76%	7.48%	88.89%	252,472	1.48	0.00	-	156.28	Mining	2.93%
-	UNACEMC1 PE**	S/.	1.67	0.00%	-2.91%	-9.24%	7.74%	94.44%	84,104	0.84	0.78	36.58	835.77	Industrial	3.00%
▲	VOLCABC1 PE**	S/.	0.83	5.06%	1.22%	-2.35%	59.62%	100.00%	688,815	0.89	0.00	-	931.36	Mining	5.90%
-	NEXAPEC1 PE**	S/.	3.43	0.00%	-0.29%	-10.91%	21.20%	61.11%	8,091	1.12	0.00	-	1,248.49	Mining	1.56%

Quantity of shares: 26

Source: Bloomberg, Economática

* Bloomberg Industry Classification System

** PER is used in the stock market and original currency of the instrument

*Legend: Variation 1D: 1 Day; 5D: 5 Days; 1M: 1 Month; YTD: Var.% 12/31/20 to date

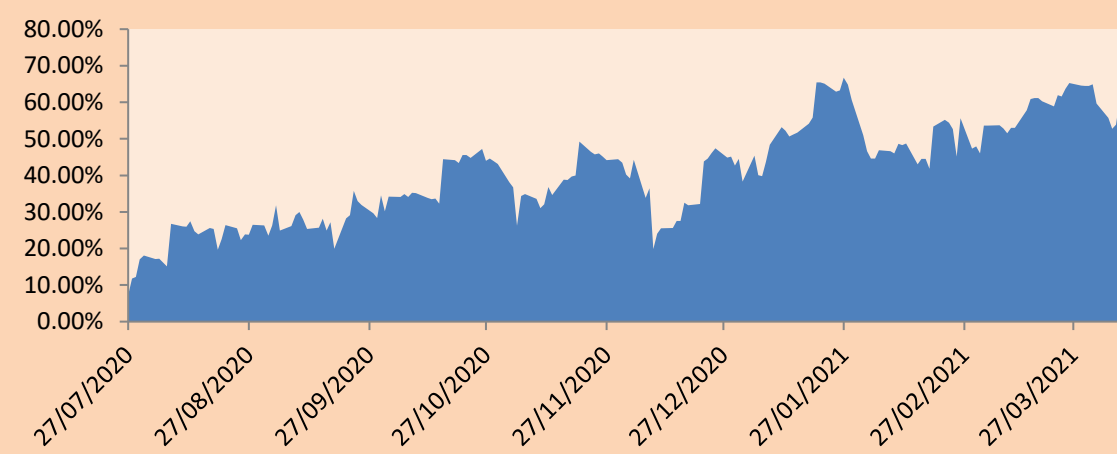
Sectorial Indices

		Close	1D*	5D*	30D*	YTD*	Beta
▲	S&P/BVLMining	419.03	1.76%	-0.08%	-8.93%	7.46%	0.95
▲	S&P/BVLConsumer	1,166.97	0.74%	-1.71%	-7.18%	7.20%	0.41
▼	S&P/BVLIndustrials	214.31	-0.32%	-2.61%	-3.69%	12.46%	0.50
▼	S&P/BVLFinancials	956.77	-0.84%	-0.60%	-5.20%	-7.46%	1.75
▼	S&P/BVLConstruction	225.43	-0.10%	-1.92%	-4.31%	7.80%	0.54
▲	S&P/BVLPublicSvcs	647.38	0.13%	-1.12%	-1.15%	5.42%	0.14
▲	S&P/BVLElectricUtil	632.01	0.13%	-1.12%	-1.15%	5.42%	0.14

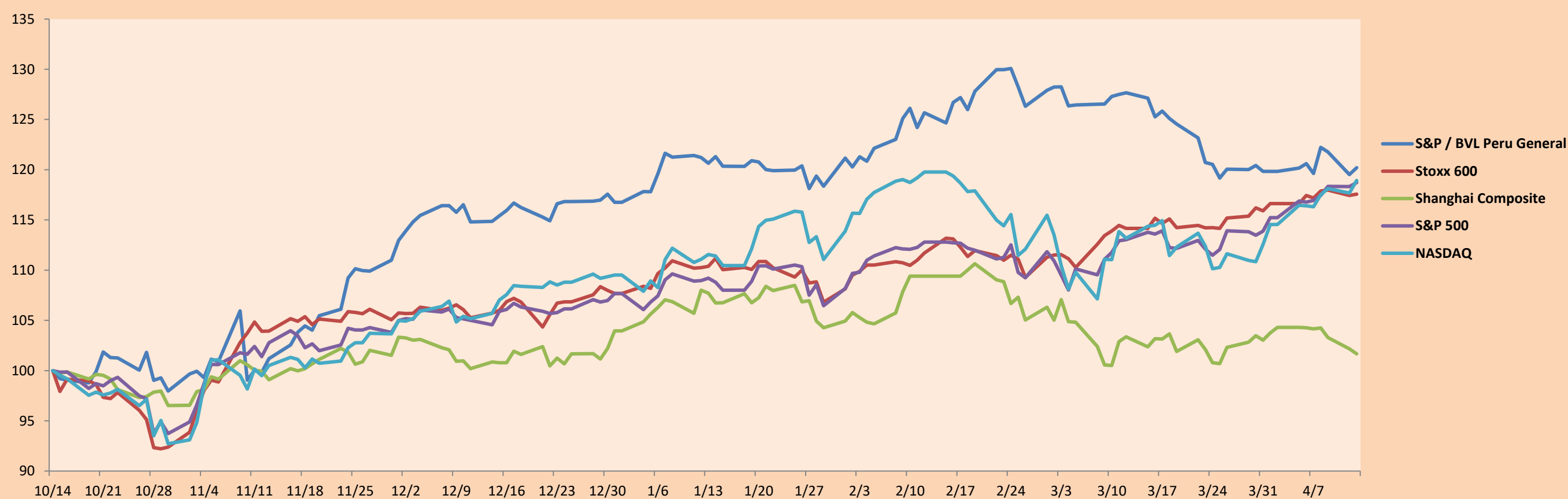
S&P/BVLConstructionTRPEN

*Legend: Variation 1D: 1 Day; 5D: 5 Days; 1M: 1 Month; YTD: Var.% 12/31/20 to date

Correlation Graph of Returns of Mining Index against Metallic Index of London (3 months)



Indices (6 months)



Base: 14/10/20=100
Source: Bloomberg

Capital Market Laboratory Coordinator: Economist Bruno Bellido
Collaboration: María Camarena, Alonso García, Nicolás Muñoz, Adrián Paredes y Jairo Valverde
email: pulsohorsatil@ulima.edu.pe
facebook: www.facebook.com/pulsohorsatil.ul

SOVEREIGN RATING

RISK RATINGS

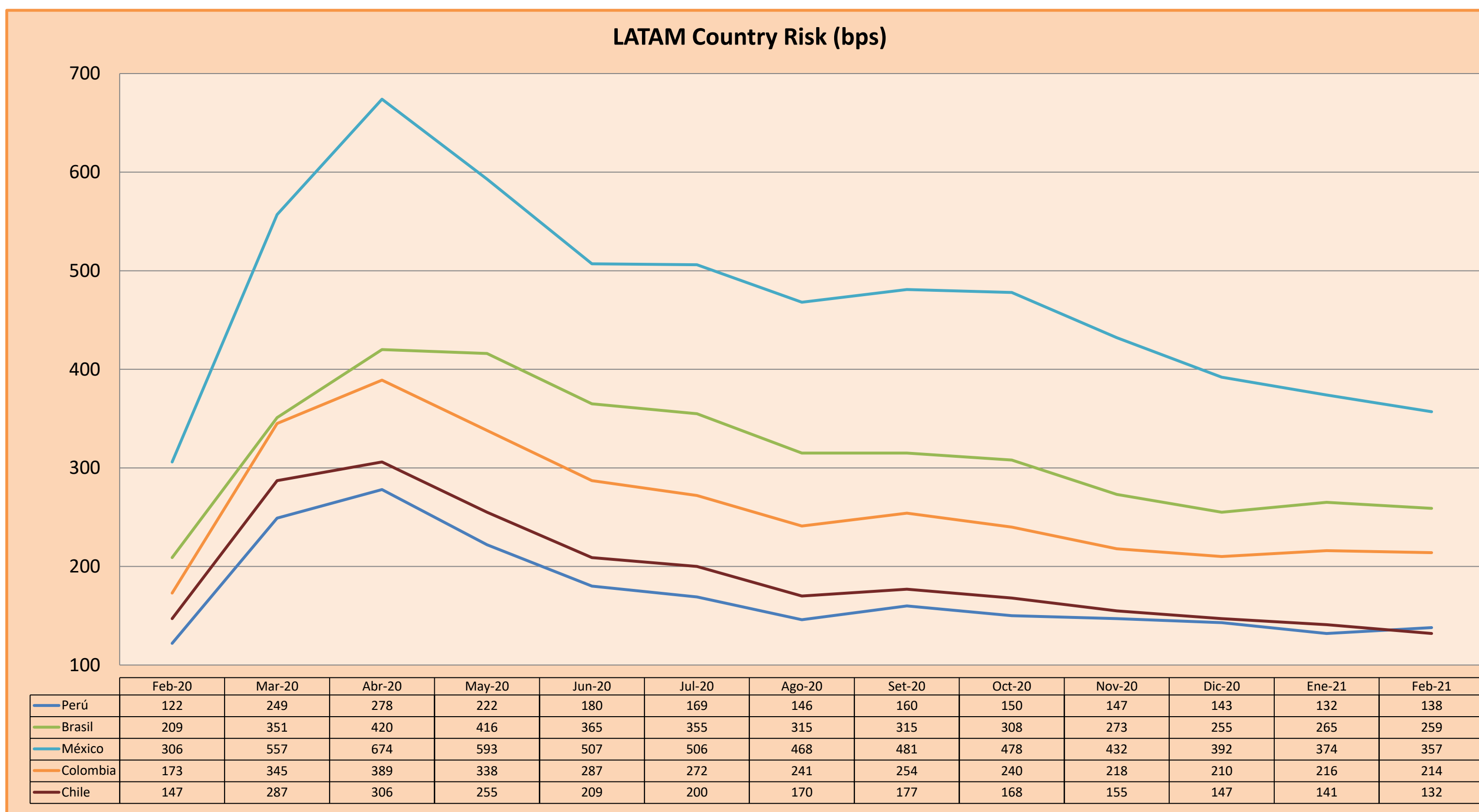
Moody's	S&P	Fitch	
Aaa	AAA	AAA	Prime
Aa1	AA+	AA+	High credit quality
Aa2	AA	AA	
Aa3	AA-	AA-	
A1	A+	A+	Medium-high grade, with low credit risk
A2	A	A	
A3	A-	A-	
Baa1	BBB+	BBB+	Moderate Credit Risk
Baa2	BBB	BBB	
Baa3	BBB-	BBB-	
Ba1	BB+	BB+	It has speculative elements and it is subject to substantial credit risk
Ba2	BB	BB	
Ba3	BB-	BB-	
B1	B+	B+	It is considered speculative and it has high credit risk
B2	B	B	
B3	B-	B-	
Caa1	CCC+	CCC	Bad credit conditions and it is subject to high credit risk
Caa2	CCC		
Caa3	CCC-		
Ca	CC	DDD	Very close to default or in default
	C		
C	D	DD	
		D	

Source: Bloomberg

Latin America Credit Rating			
Clasificadora de riesgo			
Country	Moody's	Fitch	S&P
Peru	A3	BBB+	BBB+
México	Ba2	BB-	BB-
Venezuela	C	WD	SD
Brazil	Ba2	BB-	BB-
Colombia	Baa2	BBB-	BBB-
Chile	A1	A-	A
Argentine	Ca	WD	CCC+
Panama	Baa2	BBB-	BBB

Source: Bloomberg

LATAM Country Risk (bps)



Source: BCRP

Capital Market Laboratory Coordinator: Economist Bruno Bellido
Collaboration: Maria Camarena, Alonso García, Nicolas Muñoz, Adrian Paredes y Jairo Valverde
email: pulsobursatil@ulima.edu.pe
facebook: www.facebook.com/pulsobursatil.ul