

MILA

PERU

The General Index of BVL ended today's session with a positive +1.26%. Then, the S&P / BVL Peru SEL varied by +0.24% while the S&P / BVL LIMA 25 by +2.98%. The spot PEN reached S / 3.7764. Headline: Congressional Economic Commission approved by insistence the withdrawal of up to S/.17600 from the AFP

Chile

The IPSA index closed the day with a negative return of -1.53%. The least benefited sectors of the day were Real Estate (-6.15%) and Energy (-2.22%). On the other hand, the worst performers were Cencosud Shopping SA (-13.75%) and SMU SA (-3.74%). HEADLINE: Banks contain delinquencies and their profits grow 42% in the first quarter

COLOMBIA

The COLCAP index closed today with a negative return of -2.14%. The least benefited sectors of the day were Energy (-4.20%) and Non-Cyclical Consumer Staples (-2.62%). The worst performing stocks were Grupo Nutresa SA (-4.78%) and Ecopetrol SA (-4.33%). Headline: Colombian President announces revision of controversial tax reform after massive protests by the population

Mexico

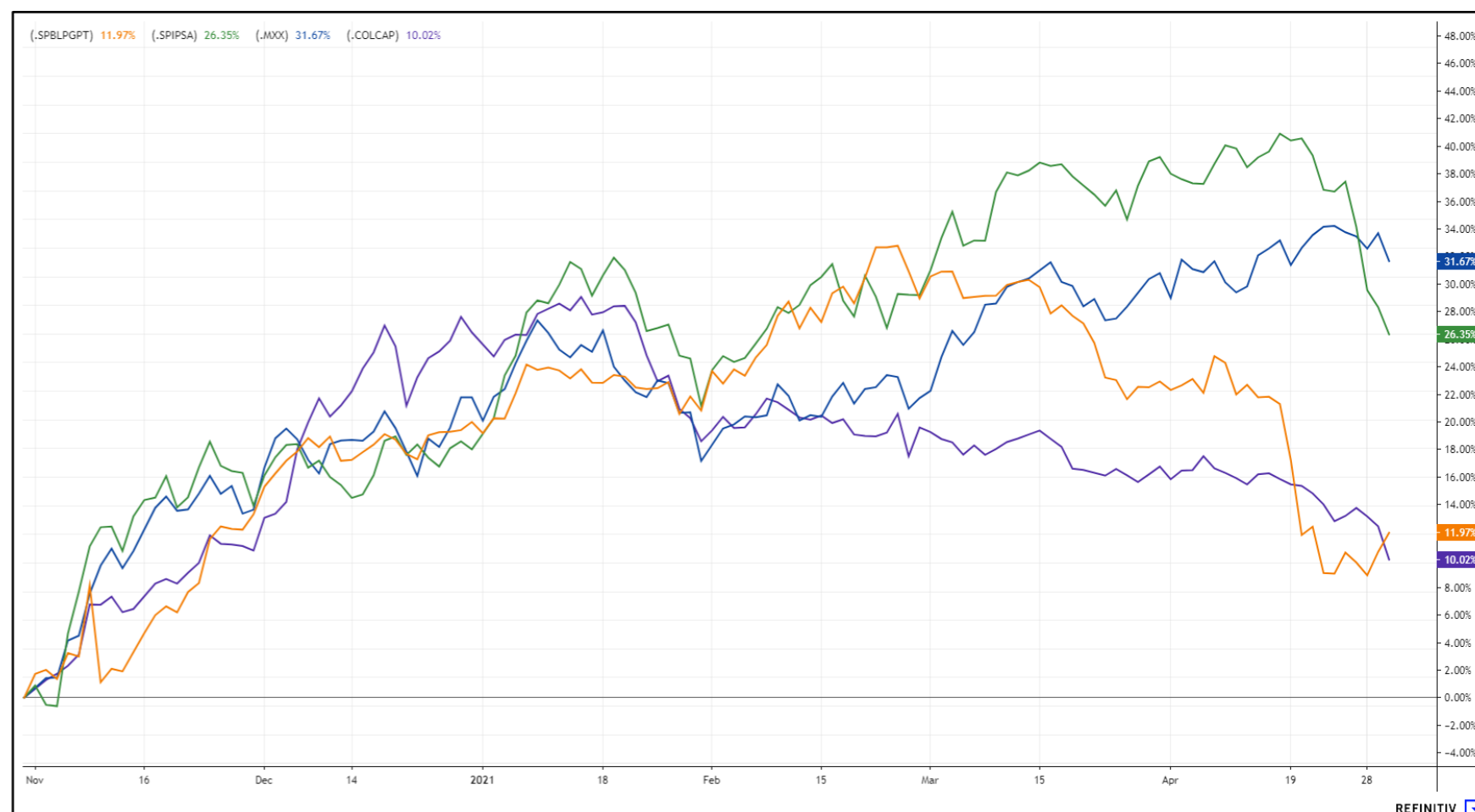
The IPC index closed the day with a positive return of -1.82%. The sectors that lost the most during the day were Financials (-2.21%) and Non-Cyclical Consumer Goods (-2.17%). The worst performing stocks were Grupo Financiero Banorte SAB de CV (-5.14%) and Grupo Financiero Inbursa SAB de CV (-3.67%). Headline: Biden's government assumes reparation for damages caused by border wall with Mexico

Currency

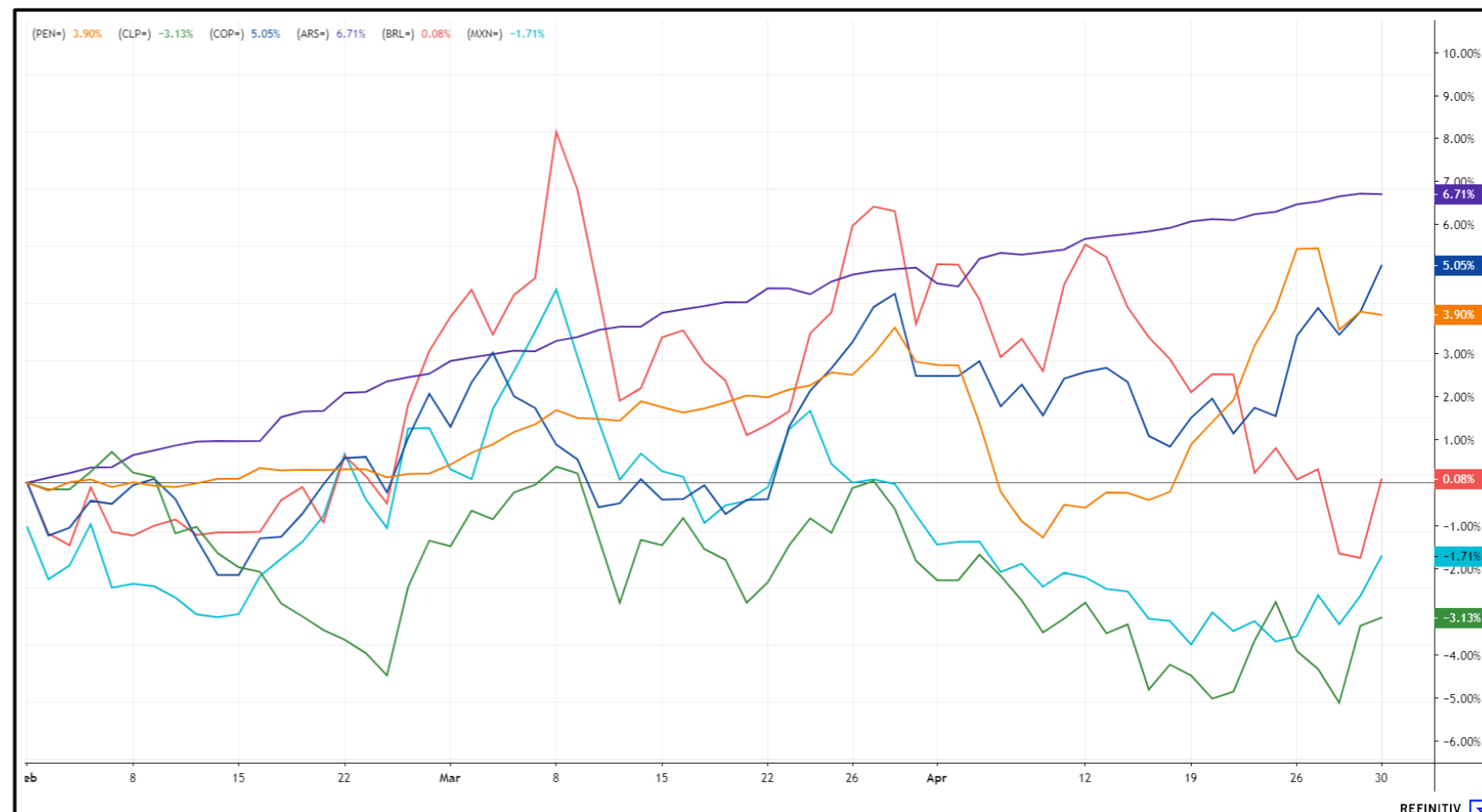
ARS=	Argentine Peso	▼	93.363	-0.1%	-0.097	93.363	ARS
BRL=	Brazilian Real	▲	5.4366	1.86%	+0.0991	5.4366	BRL
CLP=	Chilean Peso	▲	710.3		0	710.3	CLP
COP=	Colombian Peso	▲	3751.43		0	3751.43	COP
MXN=	Mexican Peso	▼	20.217	-0.04%	-0.009	20.226	MXN
PEN=	Peru Sol	▲	3.785	0.23%	+0.0086	3.7764	PEN

Lima, April 30, 2021

MILA: Stock Indices (6 months)



MILA: Foreign Exchange Indices (3 Months)



MILA: Main Indexes

RIC	Name		Last	Pct. Chng	Net. Chng	Close	Currency
.SPIPSA	S&P IPSA TR	▲	4472.84	-1.53%	-69.7	4542.54	CLP
.SPCLXIGPA	S&P/CLX IGPA TR	▼	22623.22	-1.42%	-326.76	22949.98	CLP
./COLSC	COLSC/d	🕒 ▲	986.97	-1.17%	-11.67	998.64	COP
.COLCAP	COLCAP Index	▼	1250.65	-2.14%	-27.35	1278	COP
./SPBLPGPT	S&P/BVL GENERA/d	🕒 ▼	19562.77	1.26%	+243.1	19319.67	PEN
./SPBLPSPT	S&P/BVL SELECT/d	🕒 ▼	522.9	0.24%	+1.23	521.67	PEN
./MXX	IPC/d	🕒 ▼	48009.72	-1.82%	-888.07	48897.79	MXN
.SPMILAPN	SP MILA40 Net TR		901.9494	-2%	-19.1997	921.1491	PEN
./SPBL25PT	S&P/BVL LIMA 2/d	🕒 ▼	26034.35	2.98%	+754.59	25279.76	PEN

WORLD

RIC	Name	Last	Net. Chng	% Chng	Volume	Volume30d	Volume60d	YTD%
/SPX	S&P 500 INDEX/d	4181.17	-30.3	-0.72 %				11.32 %
/SPISA	S&P IPSA TR	4472.84	-69.7	-1.53 %				7.08 %
/SPBPGPT	S&P/BVL GENERA/d	19562.77	+243.1	1.26 %				-6.05 %
/MOEX	MOEX Russia Ind.	3544	-2705	-0.76 %				7.75 %
/CSI300	CSI300 INDEX/d	5123.489	-40.6802	-0.79 %	160122	136872	165969	-1.68 %
/BSESN	S&P SENSEX/d	48782.36	-983.58	-1.98 %	19414	12811680	16371864	2.16 %
/FCHI	CAC 40 INDEX/d	6269.48	-33.09	-0.53 %	80057790	78103225	82974129	12.93 %
/MXX	IPC/d	48009.72	-888.07	-1.82 %	238307955	170539082	191710945	8.95 %
/IBEX	IBEX 35 INDEX/d	8815	-8.2	-0.09 %	267611961	189407741	199757110	9.18 %
/GSPITSE	S&P/TSX COMP I/d	19108.33	-147.59	-0.77 %	199398152	223951447	254598415	9.61 %
/STI	STRAITS TIMES/d	3218.27	-3.31	-0.10 %	304074700	247803002	270867237	13.17 %
/FTMIB	FTSE MIB/d	24141.16	-1370.4	-0.56 %	464199978	419079805	478281907	8.58 %
/NSEI	NIFTY 50/d	14631.1	-263.8	-1.77 %	613888	525485500	592469100	4.64 %
/AXJO	S&P/ASX 200	7025.8	-56.5	-0.80 %	615508224	581912930	611718122	6.66 %
/FTSE	FTSE 100 INDEX/d	6969.81	+8.33	0.12 %	831625587	745433301	796660791	7.88 %
/IXIC	NASDAQ COMPOSI/d	13962.681	-119.865	-0.85 %	1026145465	918990301	1138532797	8.34 %
/TOPX	TOPIX INDEX	1898.24	-10.82	-0.57 %	135010	1201717333	1310452833	5.18 %
/STOXX	STXE 600 PRI/d	437.39	-1.38	-0.31 %	213001104	1965461795	2095953140	9.61 %
/HSI	HANG SENG INDE/d	28724.88	-578.38	-1.97 %	2577584326	1959531305	2490166089	5.49 %
/BVSP	BVSP BOVESPA I/d	118893.84	-1171.91	-0.98 %	11093221	8701827100	9733895700	-0.10 %
/SSEC	SSE COMPOSITE/d	3446.8564	-28.0447	-0.81 %	312660	27864549970	30450501100	-0.75 %

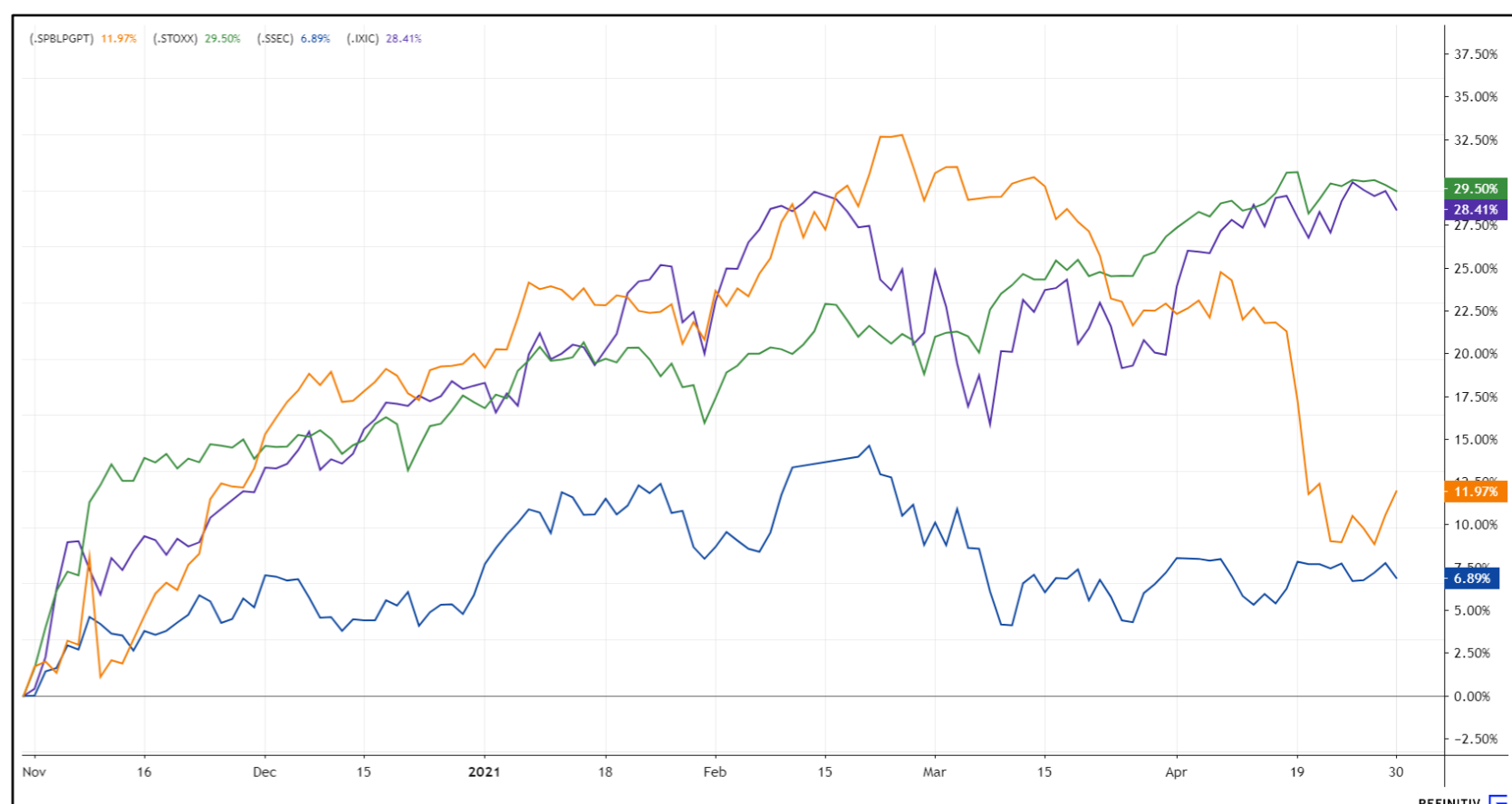
MAIN ETF's

RIC	Name	Last	% Chng	Net. Chng	Volume	Vol 30d	Volat. 30d	% YTD	% YTD (USD)
/SPY	SPDR S&P 500/d	417.30	-0.66 %	-2.76	85,527,030	78,849,786	10.60	11.61 %	11.61 %
/EFA	ISH MSCI EAFE/d	78.11	-1.25 %	-0.99	28,951,4...	19,969,209	12.63	7.06 %	7.06 %
/HYG	ISH IBOXX \$ HI/d	87.44	-0.05 %	-0.04	23,367,504	22,292,568	3.16	0.16 %	0.16 %
/XLF	SPDR FINANCL S/d	36.26	-0.87 %	-0.32	43,940,8...	50,578,600	16.56	23.00 %	23.00 %
/GDV	VNCK VCTR GLD /d	34.36	-1.18 %	-0.41	20,958,9...	18,533,582	27.44	-4.61 %	-4.61 %
/IWM	ISH RSL 2000/d	224.89	-1.36 %	-3.10	27,005,991	29,785,308	23.50	14.70 %	14.70 %
/TAN	INVSC SOLAR/d	83.15	-3.65 %	-3.15	1,121,382	1,852,741	43.82	-19.08 %	-19.08 %
/BIB39.SA	NASDAQ BIOTC/d	56.16	1.83 %	1.01	1,533			6.10 %	
/BNO	US BRENT OIL F/d	16.96	-1.91 %	-0.33	444,491	1,073,533	37.02	31.68 %	31.68 %
/DIA	SPDR DJI AVERA/d	338.94	-0.48 %	-1.63	2,909,575	3,990,276	9.70	10.84 %	10.84 %
/SDY	SPDR S&P DIVDE/d	122.75	-0.71 %	-0.88	384,788	425,359	11.12	15.88 %	15.88 %
/ZPDS.DE	E.II-S.US.CON/d	27.30	0.63 %	0.17	548	5,346	11.62	5.71 %	3.33 %
/GBTC.PK	GRAYSCALE BI O/d	46.85	8.95 %	3.85	7,525,379	8,843,144	77.36	46.41 %	46.41 %
/VNO	VANGUARD RL ES/d	99.08	0.40 %	0.39	4,371,525	4,265,137	11.74	16.66 %	16.66 %
/FXI	ISH CHINA LG C/d	46.28	-2.03 %	-0.96	27,070,209	19,250,982	20.14	-0.32 %	-0.32 %
/KXI	ISH GBL CON S/d	59.92	-0.38 %	-0.23	23,700	35,093	9.65	2.81 %	2.81 %

CURRENCY

RIC	Nombre	Currency	1D	Ask Price	Bid Price
CAD=	Canadian Dollar	CAD	-0.07 %	1.2293	1.2289
CNY=	Chinese Renminbi	CNY	0.03 %	6.474	6.473
EUR=	Euro	USD	-0.83 %	1.2022	1.2018
GBP=	British Pound	USD	-0.9 %	1.3818	1.3814
JPY=	Japanese Yen	JPY	0.33 %	109.3	109.27
KRW=	Korean Won	KRW	0.86 %	1118.35	1117.16

INDICES (6 MONTHS)



GLOBAL OVERVIEW

United States:

Major US indexes closed negatively as tech-related companies hit the S&P 500 and Nasdaq despite recent strong quarterly earnings reports. In the case of the S&P 500, the sectors most affected were the energy sector - 2.70% and the technology sector -1.27%. On the other hand, companies like Amazon, Alphabet and Apple that had posted profits and been rising in the previous days, unexpectedly fall. Likewise, Twitter is one of the most affected, falling 15%, due to its previous announcement of the increase in its costs and the possible slowdown in new users due to the improvement of the pandemic. On the other hand, US companies are beating expectations about earnings this quarter, of the 303 companies that have reported belonging to the S&P 500, 87% have beaten analyst estimates. According to Refinitiv IBES, a 46% jump in earnings growth is predicted. Thus, the S&P 500 -0.72%, the NASDAQ -0.85% and the DOW JONES -0.54% closed the day with negative returns.

Europe:

The main European markets closed with losses due to the publication of the eurozone growth report which showed a 0.6% contraction of the GDP of the entire eurozone for the first quarter. This would be the second quarter in the one-year period in which the eurozone would be in recession, although an economic recovery is still expected as a result of vaccines and reopening. In the British market, the shares of the Barclays bank -7% fell sharply after the financial publication for this quarter despite exceeding expectations in its net earnings. In the French market, the BNP Paribas bank -0.82% suffered the same as Barclays and despite publishing results that exceeded expectations, the stock ended up falling. Finally, in the German market the economy in general contracted by 1.7% which dragged almost the rest of the eurozone stock exchanges, in addition, despite the fact that several of the companies presented good results, the stock market still closed lower and the loss of BASF -4.9% and Adidas -1.4% stands out. In this way; STOXX 600 -0.31%; DAX -0.12%; CAC 40 -0.53%; FTSE 100 -0.56% ended the session lower.

Asia:

Major Asian indices ended the week with losses as U.S. bond yields rise. Hong Kong stocks posted declines dragged down by tech stocks following a crackdown by Beijing on financial techs regarding regulatory compliance. Regarding economic data, China's manufacturing activity registered slower expansions and missed April forecasts; due to a drop in foreign demand. On the other hand, in Japan, the main indexes closed lower, dragged down by the poor outlook for technology companies. In addition, new COVID-19 infections in Tokyo and Osaka increased investors' concerns. Finally, in the Australian index, losses were led by gold miners as rising Treasury bond yields reduced their attractiveness. Beach Energy Ltd led the losses -24.00% after a decrease in its estimates following a decline in production at its Western Flank field in South Australia. Thus, S&P/ASX 200 -0.80%; Nikkei -0.83%; Hang Seng -1.97%; Shanghai -0.81%; KOSPI -0.83% ended the session with losses.

## LIMA

RIC	Name		Moneda	Precio	1D	5D	30D	YTD	Beta	Dividend Yield ▲
/SPBLPGPT	S&P/BVL GENERA/d	🕒 ▼	PEN	19562.77	1.26 %	2.73 %	-12.84 %		1.00	Unable to collect...
/CVERDEC1.LM	CERRO VERDE/d	🕒 ▼	USD	23.2	7.91 %	18.97 %	-9.19 %	13.60 %	1.11	
/ENDISPC1.LM	ENEL DIST PERU/d	🕒 ▲	PEN	4.95	15.116 %	23.75 %	-16.04 %	-5.63 %	0.40	
/UNACEMC1.LM	UNACEM/d	🕒 ▲	PEN	1.53	6.993 %	18.60 %	-15.00 %	-0.59 %	1.06	0.84 %
/INRETC1.LM	INRETAIL PERU/d	🕒 ▲	USD	35.4	-0.28 %	2.61 %	-20.45 %	-9.69 %	0.59	1.39 %
/BACKUSI1.LM	BACKUS JOHNSTO/d	🕒 ▲	PEN	19.8	3.665 %	7.03 %	-14.84 %	-1.74 %	0.38	1.84 %
/SCCO.LM	SOUTHERN COPPE/d	🕒 ▼	USD	69.95	-1.96 %	-2.15 %	-5.97 %	7.05 %	1.12	2.30 %
/ALICORC1.LM	ALICORP/d	🕒 ▼	PEN	6.9	-1.429 %	7.81 %	-11.03 %	0.17 %	0.73	3.63 %
/CPACASC1.LM	CEM PACASMAYO/d	🕒 ▲	PEN	5.45	5.825 %	5.62 %	-7.94 %	2.83 %	0.74	3.85 %
/BBVAC1.LM	BCO BBVA PERU/d	🕒 ▲	PEN	2.06	3 %	0.98 %	-13.61 %	-3.26 %	0.77	3.98 %
/BVLAC1.LM	BOLSA DE LIMA/d	🕒	PEN	2.5		4.17 %	-0.74 %	4.62 %	0.15	4.60 %
/CASAGRC1.LM	CASA GRANDE/d	🕒 ▲	PEN	5.6	9.162 %	11.33 %	-3.45 %	17.89 %	0.85	4.76 %
/BAP.LM	CREDICORP/d	🕒 ▼	USD	119.8	-0.7 %	-0.17 %	-20.11 %	-25.40 %	1.13	5.18 %
/IFS.LM	INTERCORP/d	🕒 ▼	USD	25.85	0.15 %	-3.00 %	-16.23 %	-14.04 %	1.23	5.22 %
/ENGIEC1.LM	ENGIE ENERG PE/d	🕒 ▼	PEN	6.26		-2.19 %	-13.39 %	-7.21 %	0.36	5.25 %
/CORAREC1.LM	ACEROS AREQUIP/d	🕒	PEN	1.26		-0.79 %	-6.50 %	4.90 %	0.58	5.68 %
/CORAREI1.LM	ACEROS AREQUIP/d	🕒 ▲	PEN	1.1	10 %	25.00 %	-1.67 %	27.06 %	1.14	5.68 %
/FERREYC1.LM	FERREYCORP/d	🕒 ▲	PEN	1.84	3.955 %	6.98 %	-12.75 %	10.82 %	1.15	8.81 %
/SIDERC1.LM	SIDER PERU/d	🕒 ▼	PEN	0.98	4.255 %	22.50 %	5.74 %	28.14 %	1.14	10.63 %
/ENGEPEC1.LM	ENEL GEN PERU/d	🕒 ▲	PEN	1.95	2.632 %	3.17 %	-24.46 %	0.09 %	0.49	10.99 %
/ATACOBC1.LM	ATACOCHA/d	🕒 ▼	PEN	0.126	6.78 %	6.78 %	-18.71 %	-8.70 %	1.83	
/BVN.LM	BUENAVENTURA/d	🕒 ▼	USD	9.73	0.1 %	-3.47 %	-12.58 %	-18.92 %	1.35	
/AENZAC1.LM	AENZA/d	🕒 ▼	PEN	1.28	6.667 %	-1.54 %	-25.15 %	-26.44 %	1.47	
/MINSUR1.LM	MINSUR/d	🕒 ▲	PEN	2.8	11.111 %	27.27 %	-1.75 %	51.35 %	1.13	
/NEXAPEC1.LM	NEXA RES PERU/d	🕒 ▲	PEN	3.2	18.519 %	14.29 %	-15.79 %	13.07 %	1.57	
/PMLLM	PANORO MINERAL/d	🕒 ▼	USD	0.127	4.1 %	5.83 %	-18.06 %	19.81 %	1.95	
/RELAPAC1.LM	RELAPA SAA/d	🕒 ▼	PEN	0.117	1.739 %	17.00 %	-13.97 %	69.57 %	1.93	
/RIMSEGC1.LM	RIMAC SEGUROS/d	🕒	PEN	1.05			-8.70 %	6.36 %	0.55	
/TV.LM	TREVALI MINING/d	🕒 ▲	USD	0.168	5 %	13.51 %	6.33 %	14.29 %	2.47	
/VOLCABC1.LM	VOLCAN MINERA/d	🕒 ▼	PEN	0.75	2.74 %	11.94 %	-10.71 %	44.23 %	1.63	

\*Source: Refinitiv

Coordinador Laboratorio de Mercado de Capitales: Economista Bruno Bellido  
 Apoyo: Maria Camarena, Alonso García, Adrian Paredes y Jairo Valverde  
 email: pulsobursatil@ulima.edu.pe  
 facebook: www.facebook.com/pulsobursatil.ul

## RATING SOBERANO

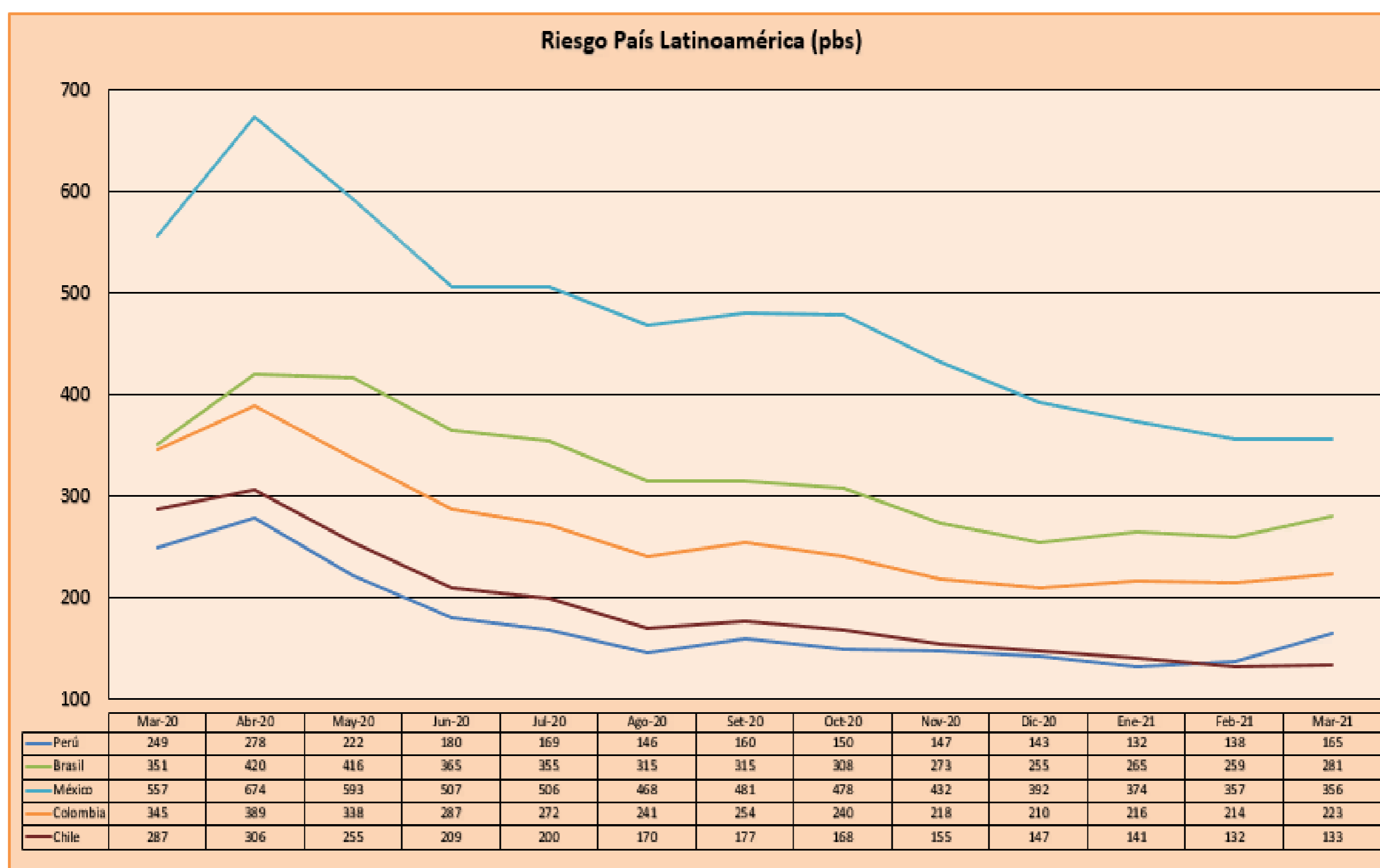
### CLASIFICACIONES DE RIESGO

Moody's	S&P	Fitch	Prime	32
Aaa	AAA	AAA	Prime	
Aa1	AA+	AA+	Alto Grado	
Aa2	AA	AA		
Aa3	AA-	AA-		
A1	A+	A+	Grado Alto Medio	
A2	A	A		
A3	A-	A-		
Baa1	BBB+	BBB+	Grado Bajo Medio	
Baa2	BBB	BBB		
Baa3	BBB-	BBB-		
Ba1	BB+	BB+	Sin Grado de Inversión Especulativo	
Ba2	BB	BB		
Ba3	BB-	BB-		
B1	B+	B+	Altamente Especulativo	
B2	B	B		
B3	B-	B-		
Caa1	CCC+	CCC	Riesgo Sustancial Extremadamente Especulativo	
Caa2	CCC			
Caa3	CCC-			
Ca	CC	DDD	Poca esperanzas de Pago	
C	C			
	D			
		DD	Impago	
		D		

Fuente: Bloomberg

Rating Crédito Latinoamérica			
Clasificadora de riesgo			
País	Moody's	Fitch	S&P
Perú	A3	BBB+	BBB+
México	Baa1	BBB-	BBB
Venezuela	C	WD	SD
Brazil	Ba2	BB-	BB-
Colombia	Baa2	BBB-	BBB-
Chile	A1	A-	A
Argentina	Ca	WD	CCC+
Panamá	Baa2	BBB-	BBB

Fuente: Bloomberg



Source: BCRP