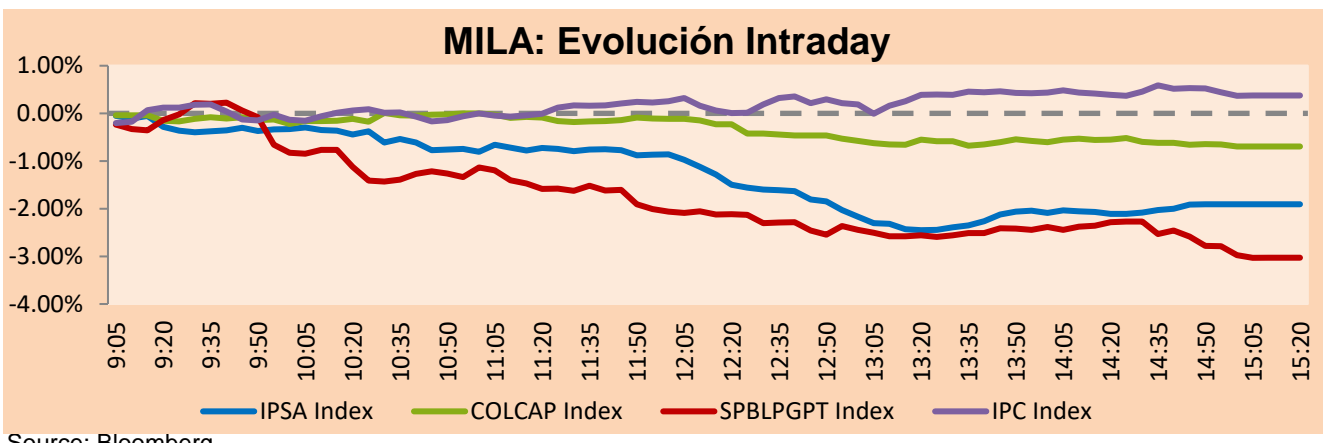


MILA

Lima, April 22, 2021

Main Indexes	Close	1 D	5 D	1 M	YTD	Cap. Burs. (US\$ bill)
▼ IPSA (Chile)	4,843.82	-1.79%	-1.99%	0.85%	15.96%	139.75
▼ IGPA (Chile)	24,474.45	-1.78%	-1.78%	1.14%	16.50%	168.35
▼ COLSC (Colombia)	1,004.66	-0.91%	-2.49%	-3.77%	-5.13%	5.09
▼ COLCAP (Colombia)	1,296.07	-0.69%	-1.95%	-1.80%	-9.86%	76.96
▼ S&P/BVL (Perú)*	19,052.72	-2.99%	-10.49%	-11.50%	-8.50%	98.13
▼ S&P/BVL SEL (Perú)	509.37	-2.92%	-10.01%	-10.95%	-7.62%	88.15
▼ S&P/BVL LIMA 25	24,583.56	-3.90%	-13.24%	-14.63%	-2.44%	97.26
▲ IPC (México)	49,092.31	0.46%	1.19%	5.21%	11.40%	309.34
▼ S&P MILA 40	539.00	-2.64%	-4.54%	-2.89%	0.82%	6,165.58

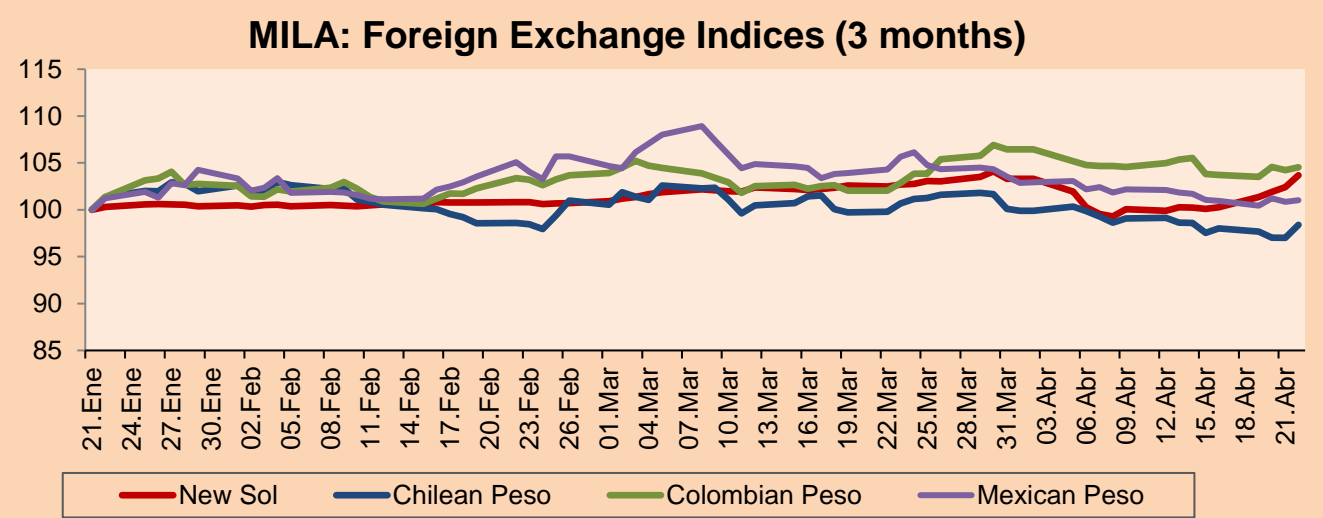
*Legend: Variation 1D: 1 day; 5D: 5 days; 1M: 1 Month; YTD: Var% 12/31/20 to date



Source: Bloomberg

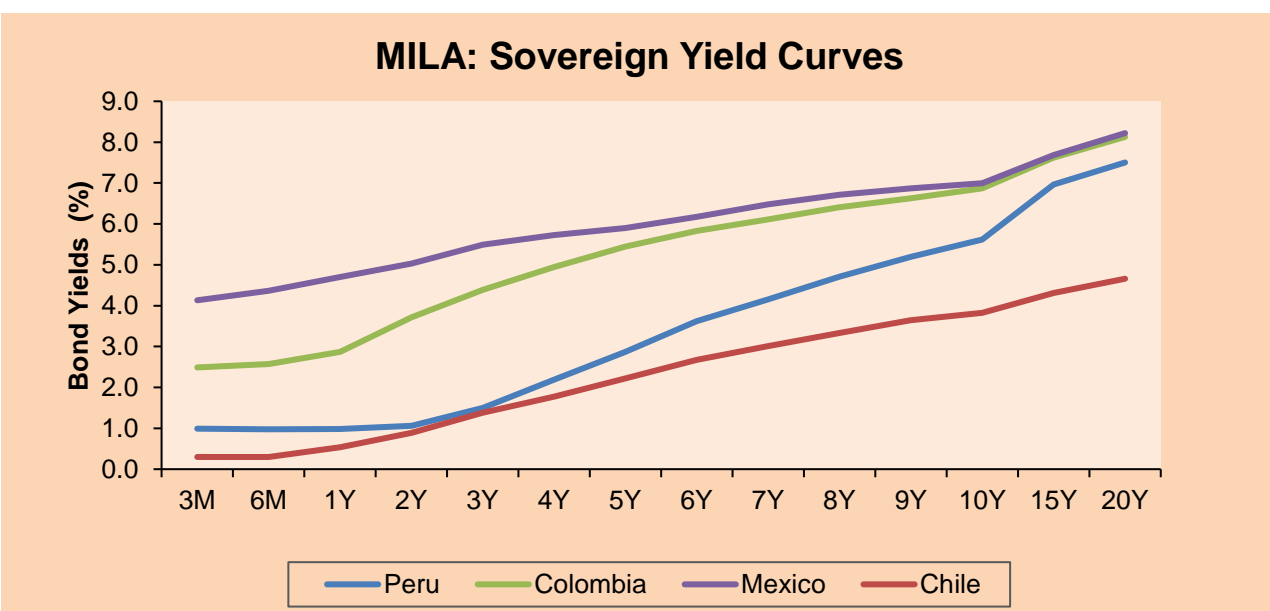
Currency	Price	1D*	5D*	30 D*	YTD*
▲ Sol (PEN)	3,757.00	1.24%	3.60%	0.97%	3.84%
▲ Chilean Peso (CLP)	706.67	1.42%	0.87%	-2.28%	-0.72%
▲ Colombian Peso (COP)	3,637.61	0.29%	0.68%	1.64%	6.06%
▲ Mexican Peso (MXN)	19.93	0.14%	-0.04%	-4.39%	0.09%

*Legend: Variation 1D: 1 day; 5D: 5 days; 1M: 1 Month; YTD: Var% 12/31/20 to date



Base: 21/01/21=100
Source: Bloomberg

Fixed Income	Currency	Price	Bid Yield (%)	Ask Yield (%)	Duration
PERU 7.35 07/21/25	USD	122.818	1.78	1.70	3.71
PERU 4.125 08/25/27	USD	110.122	2.43	2.35	5.65
PERU 8.75 11/21/33	USD	153.422	3.51	3.43	8.62
PERU 6.55 03/14/37	USD	133.197	3.79	3.72	10.45
PERU 5.625 11/18/2050	USD	130.166	3.92	3.88	16.27
CHILE 2.25 10/30/22	USD	102.757	0.54	0.30	1.48
CHILE 3.125 01/21/26	USD	108.459	1.33	1.23	4.43
CHILE 3.625 10/30/42	USD	106.906	3.20	3.16	15.32
COLOM 11.85 03/09/28	USD	159.723	2.50	2.25	5.28
COLOM 10.375 01/28/33	USD	154.125	4.53	4.32	7.82
COLOM 7.375 09/18/37	USD	133.465	4.50	4.44	10.60
COLOM 6.125 01/18/41	USD	120.356	4.58	4.52	12.29
MEX 4 10/02/23	USD	120.356	4.578	4.522	12.29
MEX5.55 01/45	USD	116.817	4.42	4.38	14.04



Source: Bloomberg

Equity

Largest gains	Exchange	Currency	Price	▲%
CAP	Chile	CLP	14600.00	4.38
CEMENTOS ARGOS	Colombia	COP	5390.00	3.06
GRUPO TELEV-CPO	Mexico	MXN	53.46	2.59
ENEL CHILE SA	Chile	CLP	56.70	1.07
BUENAVENTURA-ADR	Peru	USD	10.46	1.06

Per Turnover	Exchange	Amount (US\$)
ENEL AMERICAS SA	Chile	55,290,815
GRUPO F BANORT-O	Mexico	37,637,312
WALMART DE MEXIC	Mexico	35,109,822
BANCO DE CHILE	Chile	30,597,705
FALABELLA SA	Chile	28,793,287

Largest losses	Exchange	Currency	Price	▼%
VOLCAN CIA MIN-B	Peru	PEN	0.76	-11.63
ALICORP-C	Peru	PEN	7.15	-6.41
FERREYCORP SAA	Peru	PEN	1.99	-6.13
GRUPO CARSO-A1	Mexico	MXN	58.37	-4.55
ENEL AMERICAS SA	Chile	CLP	108	-4.42

Per Volume	Exchange	Volume
ITAU CORPBANCA	Chile	999,539,380
ENEL AMERICAS SA	Chile	355,748,485
BANCO DE CHILE	Chile	251,692,649
BANCO SANTANDER	Chile	217,120,783
ENEL CHILE SA	Chile	36,521,069

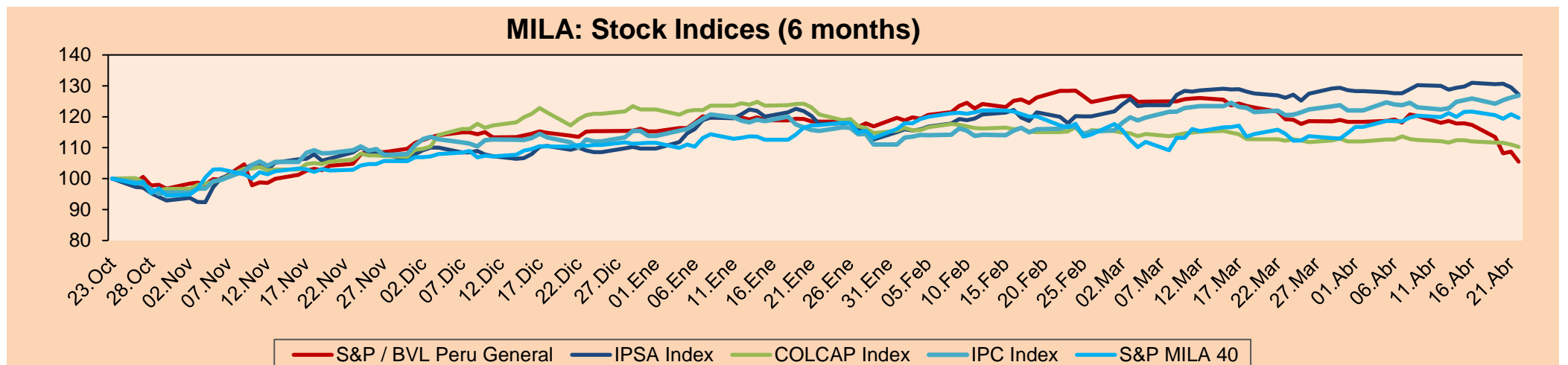
MILA

Peru: The General Index of the BVL ended today's session with a negative result of -2.99%. The index maintains an annual accumulated negative trend of -8.50% in local currency, while the adjusted return in dollars falls to -11.88%. Then, the S&P / BVL Peru SEL varied by -2.92% while the S&P / BVL LIMA 25 by -3.90%. The PEN spot reached S / 3.7570. Headline: BVL closes with all its indicators in red after new electoral survey is known

Chile: The IPSA index ended the day with a negative return of -1.79%. The stocks with the best performance were Aguas Andinas SA (+ 0.37%) and Sociedad Química y Minera de C (+ 0.26%). On the other hand, the shares with the worst performance were Cencosud Shopping (-4.53%) and Parque Arauco SA (-3.83%). Headline: Uncertain political scenario affects the stock market and the IPSA loses more than 2%

Colombia: The COLCAP index closed today with a negative return of -0.70%. The most affected sectors of the day were Basic consumer products (-2.84%) and Basic necessities (-1.37%). The worst performing stocks were Organización Terpel SA. (-2.84%) and Promigas SA (-2.37%). Headline: Covid deaths continue to skyrocket: country set new daily record

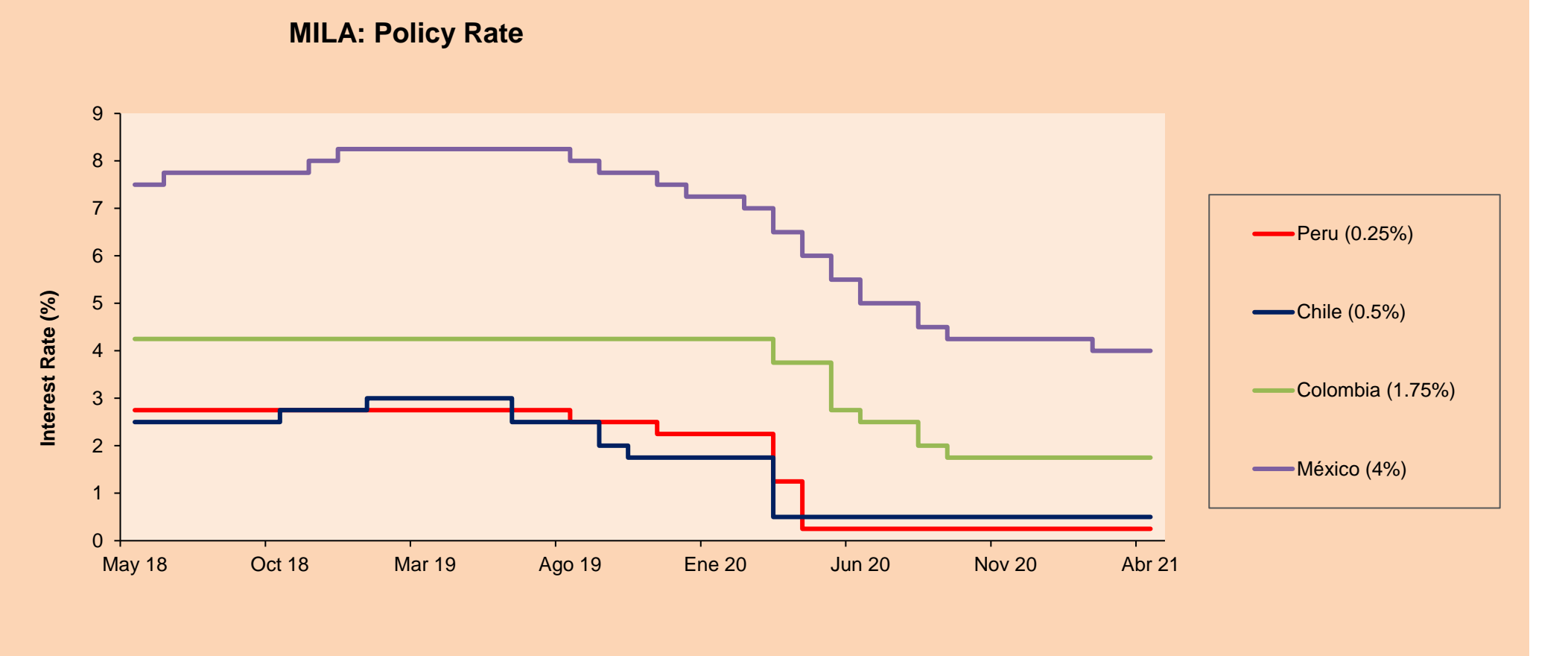
Mexico: The IPC index closed the day with a positive return of + 0.46%. The sectors that benefited the most from the session were Finance (+ 2.17%) and Industrial (+ 1.22%). The best performing stocks were Mexichem SAB de CV (+ 5.19%) and Banco del Bajío SA (+ 4.37%). Headline: Unemployment rate in Mexico falls to 3.89% in March, its lowest level in 2021: Inegi



Base: 26/10/20=100
Source: Bloomberg

ETFs

ETFs	Curr.	Close	1D	5D	30 D	YTD	Exchange
▼ iShares MSCI All Peru Caped Index Fund	USD	31.53	-4.28%	-11.56%	-7.89%	-9.08%	NYSE Arca
▼ iShares MSCI All Chile Caped Index Fund	USD	34.44	-2.82%	-2.55%	3.33%	14.00%	Cboe BZX
▲ Global X MSCI Colombia	USD	10.1344	-0.74%	-2.33%	-0.78%	-10.79%	NYSE Arca
▲ iShares MSCI Mexico Capped	USD	46.95	0.17%	1.16%	9.47%	9.21%	NYSE Arca
▼ iShares MSCI Emerging Markets	USD	53.85	-0.35%	-0.66%	1.82%	4.22%	NYSE Arca
▼ Vanguard FTSE Emerging Markets	USD	52.59	-0.17%	-0.04%	1.58%	4.95%	NYSE Arca
▼ iShares Core MSCI Emerging Markets	USD	65.22	-0.40%	-0.44%	2.16%	5.13%	NYSE Arca
▼ iShares JP Morgan Emerging Markets Bonds	USD	63.4	-0.38%	-0.03%	2.03%	3.80%	Cboe BZX
▼ Morgan Stanley Emerging Markets Domestic	USD	6.07	-1.30%	-1.14%	1.51%	-3.50%	New York



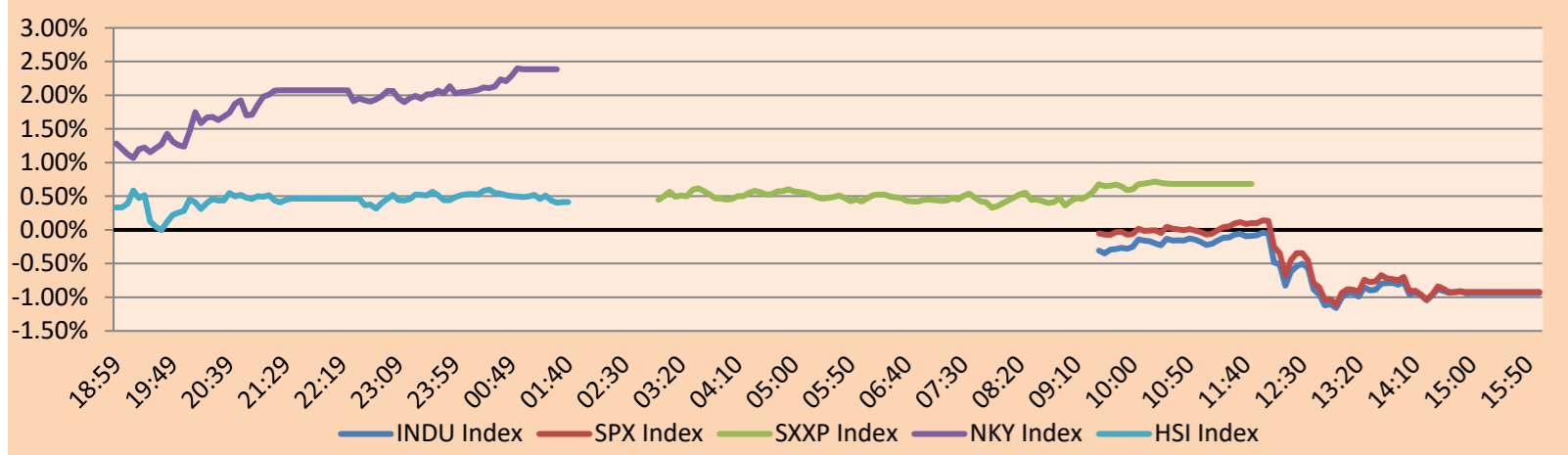
Source: Bloomberg

WORLD

Main Indices	Close	1 D*	5 D*	1 M*	YTD*	Market Cap. (US\$ Mill.)
▼ Dow Jones (USA)	33,815.90	-0.94%	-0.65%	4.30%	10.49%	10,257,251
▼ Standard & Poor's 500 (EEUU)	4,134.98	-0.92%	-0.85%	5.74%	10.09%	36,572,362
▼ NASDAQ Composite (USA)	13,818.41	-0.95%	-1.57%	4.47%	7.22%	22,718,055
▲ Stoxx EUROPE 600 (Europe)	439.63	0.68%	0.25%	3.86%	10.17%	10,080,176
▲ DAX (Germany)	15,320.52	0.82%	0.43%	4.49%	11.68%	1,157,414
▲ FTSE 100 (United Kingdom)	6,938.24	0.62%	-0.65%	3.57%	7.39%	1,452,926
▲ CAC 40 (France)	6,267.28	0.91%	0.53%	5.42%	12.90%	1,713,954
▲ IBEX 35 (Spain)	8,656.80	1.61%	0.99%	3.18%	7.22%	479,972
▲ MSCI AC Asia Pacific Index	207.29	0.95%	-0.33%	0.48%	3.69%	26,110,503
▲ HANG SENG (Hong kong)	28,755.34	0.47%	-0.13%	0.91%	5.60%	4,402,714
▼ SHANGHAI SE Comp. (China)	3,465.11	-0.23%	1.95%	1.57%	-0.23%	6,598,560
▲ NIKKEI 225 (Japan)	29,188.17	2.38%	-1.53%	-0.25%	5.39%	3,983,622
▲ S&P / ASX 200 (Australia)	7,055.45	0.83%	-0.05%	4.56%	7.08%	1,728,618
▲ KOSPI (South Korea)	3,177.52	0.46%	1.19%	5.38%	10.19%	1,901,962

*Legend: Variation 1D: 1 Day; 5D: 5 Days; 1M: 1 Month; YTD: Var.% 12/31/20 to date

Global Markets: Intraday Evolution (var %)

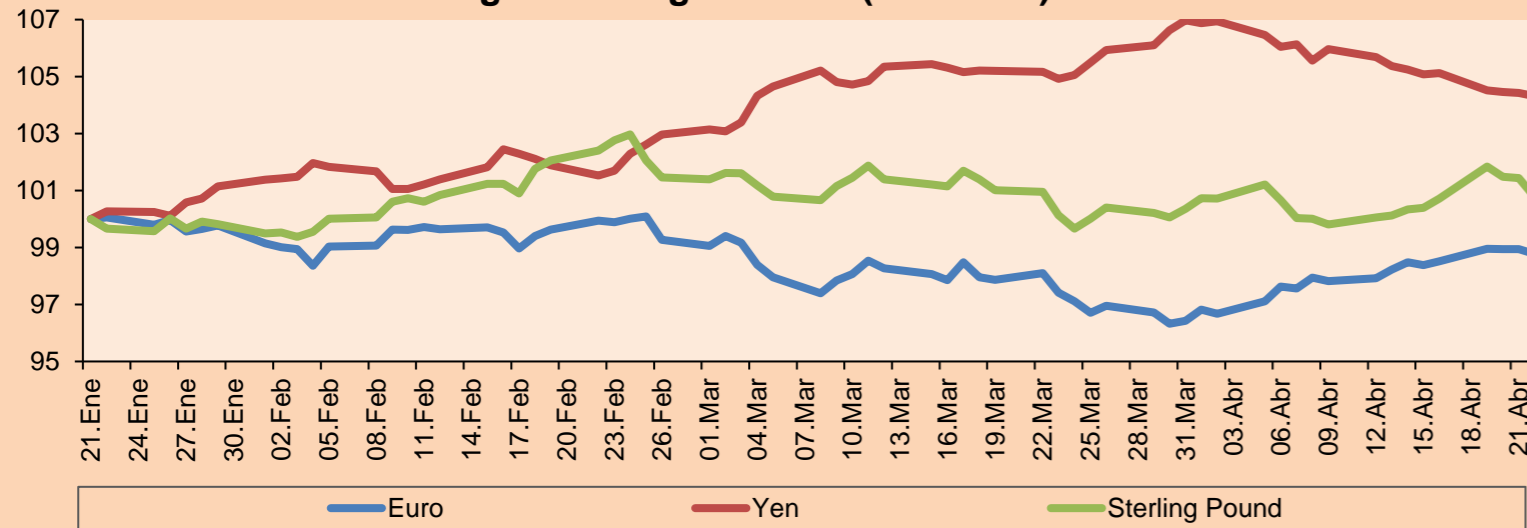


Source: Bloomberg

Currency	Price	1 D*	5 D*	1 M*	YTD*
▼ Euro	1.2015	-0.17%	0.40%	1.40%	-1.65%
▼ Yen	107.9700	-0.10%	-0.73%	-0.57%	4.57%
▼ Sterling Pound	1.3839	-0.66%	0.38%	0.63%	1.24%
▼ Yuan	6.4901	-0.01%	-0.50%	-0.40%	-0.57%
▼ Hong Kong Dollar	7.7599	-0.06%	-0.10%	-0.09%	0.09%
▼ Brazilian Real	5.4468	-2.17%	-3.02%	-1.39%	4.78%
▲ Argentine Peso	93.0741	0.05%	0.38%	1.57%	10.61%

*Legend: Variation 1D: 1 Day; 5D: 5 Days; 1M: 1 Month; YTD: Var.% 12/31/20 to date

Foreign Exchange Indices (3 months)

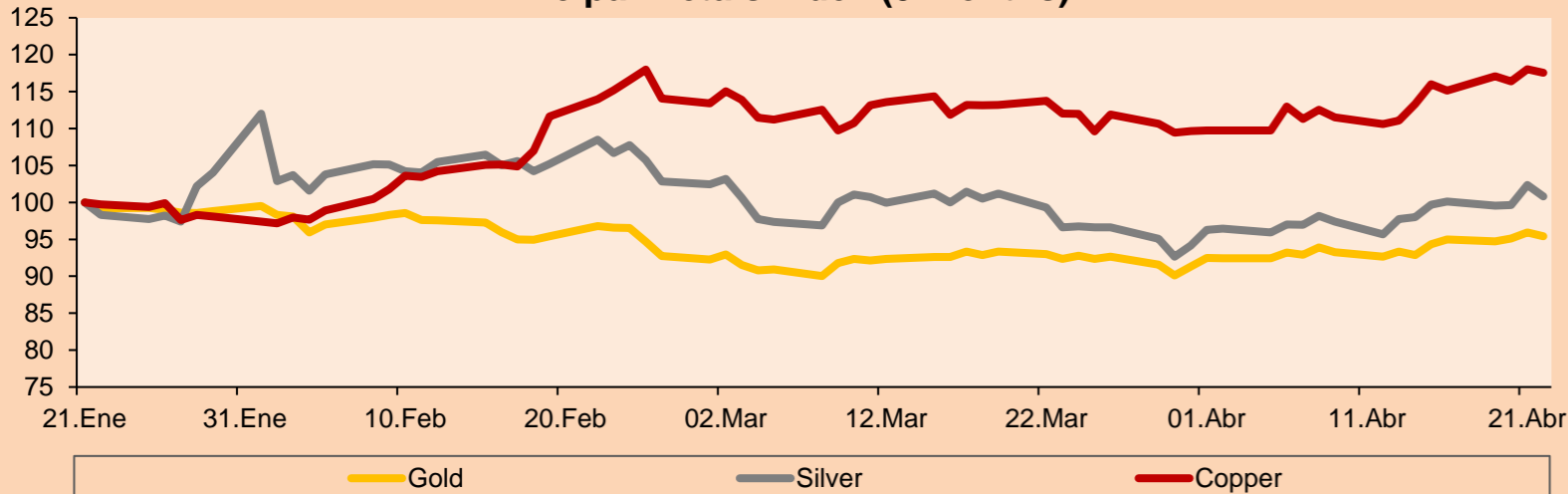


Base: 21/01/21=100
Source: Bloomberg

Commodities	Close	1 D*	5 D*	1 M*	YTD*
▼ Oro (US\$ Oz. T) (LME)	1,783.94	-0.55%	1.13%	3.29%	-6.03%
▼ Plata (US\$ Oz. T) (LME)	26.15	-1.54%	1.14%	4.33%	-0.97%
▼ Cobre (US\$ TM) (LME)	9,421.35	-0.40%	1.33%	4.93%	21.58%
▲ Zinc (US\$ TM) (LME)	2,806.00	0.38%	-1.30%	-0.68%	2.81%
▲ Petróleo WTI (US\$ Barril) (NYM)	61.43	0.13%	-3.28%	6.32%	26.32%
▲ Estaño (US\$ TM) (LME)	28,155.00	-0.37%	0.70%	1.81%	37.04%
▲ Plomo (US\$ TM) (LME)	2,028.50	1.46%	1.51%	5.60%	2.67%
▼ Azúcar #11 (US\$ Libra) (NYB-ICE)	16.88	-0.06%	3.49%	11.20%	18.96%
▲ Cacao (US\$ TM) (NYB-ICE)	2,442.00	0.12%	-0.85%	-0.89%	-2.75%
▲ Café Arábica (US\$ TM) (NYB-ICE)	136.15	1.45%	1.08%	5.01%	3.26%

*Leyenda: Variación 1D: 1 Día; 5D: 5 Días; 1M: 1 Mes; YTD: Var.% 31/12/20 a la fecha

Principal Metals Index (3 months)



Base: 21/01/21=100
Source: Bloomberg

Equity

Germany (Stocks from DAX Index)

Largest gains	Curr.	Price	▲ %	Exchange	Largest losses	Curr.	Price	▼ %	Exchange
DHER GY	EUR	128.15	1.02	Xetra	VNA GY	EUR	57.06	1.35	Xetra
BAYN GY	EUR	55.69	-0.29	Xetra	CON GY	EUR	116.32	3.49	Xetra
FME GY	EUR	65.9	1.35	Xetra	HEN3 GY	EUR	97.42	1.42	Xetra
FRE GY	EUR	39.82	0.98	Xetra	ENR GY	EUR	29.08	2.90	Xetra

Europe (Stocks from STOXX EUROPE 600)

Largest gains	Curr.	Price	▲ %	Exchange	Largest losses	Curr.	Price	▼ %	Exchange
MKS LN	GBp	158.05	2.33	Londres	NEL NO	NOK	25.28	7.57	Oslo
BBVA SQ	EUR	4.4005	2.68	Soc.Bol SIBE	SINCH SS	SEK	1598	1.95	Stockholm
SAN SQ	EUR	2.8455	1.01	Soc.Bol SIBE	THG LN	GBp	642	2.23	Londres
KSP ID	EUR	77.06	0.76	EN Dublin	INPST NA	EUR	15.35	-0.08	EN Amsterdam

Global Overview:

United States:

The main US indexes closed with negative results, due to the tax proposal of President Joe Biden. US indexes plummeted as Biden plans to raise income tax on the wealthiest. The Dow and the S&P500 have recently grown to their historical peaks and are awaiting earnings reports from Microsoft Corp, Alphabet Inc and Facebook Inc. Also, the 11 sectors of the S&P 500 closed lower, with technology companies the most trailing. On the other hand, the Labor Department report suggested that layoffs were declining, with data of lower claims for unemployment benefits falling to a new low this year. Finally, the speedy U.S. vaccination has improved the economic outlook, however, in the case of India and other Asian countries, the increase in cases keeps investors alert. Thus, the S&P 500 -0.92%, the NASDAQ -0.94% and the DOW JONES -0.94% closed the day with losses.

Europe:

The main European markets closed the day with bullish results, on the back of announcements from the Central Bank and a series of solid earnings results from companies. On Thursday, the European Central Bank (ECB) announced that it will leave its key economic stimulus programs unchanged. As a result, interest rates remain at record lows and the 1.85 trillion euro bond purchase will be extended until at least March 2022, according to the ECB. The pan-European STOXX 600 index held on to yesterday's gains, recovering from Tuesday's drop, its worst day so far in 2021. European companies in the index are poised to reverse the losses generated by the pandemic, as, according to data from Refinitiv IBES, the index's earnings forecast increased to 61% for the first quarter. On the equity side, Nestlé +2.88% after reporting quarterly sales growth of 7.7%. Finnish sustainable technology firm Wartsila +15.14% after beating Q1 estimates. Thus, the STOXX 600 +0.68%, CAC 40 +0.91%, FTSE 100 +0.62% and DAX +0.82% closed the day with positive performances.

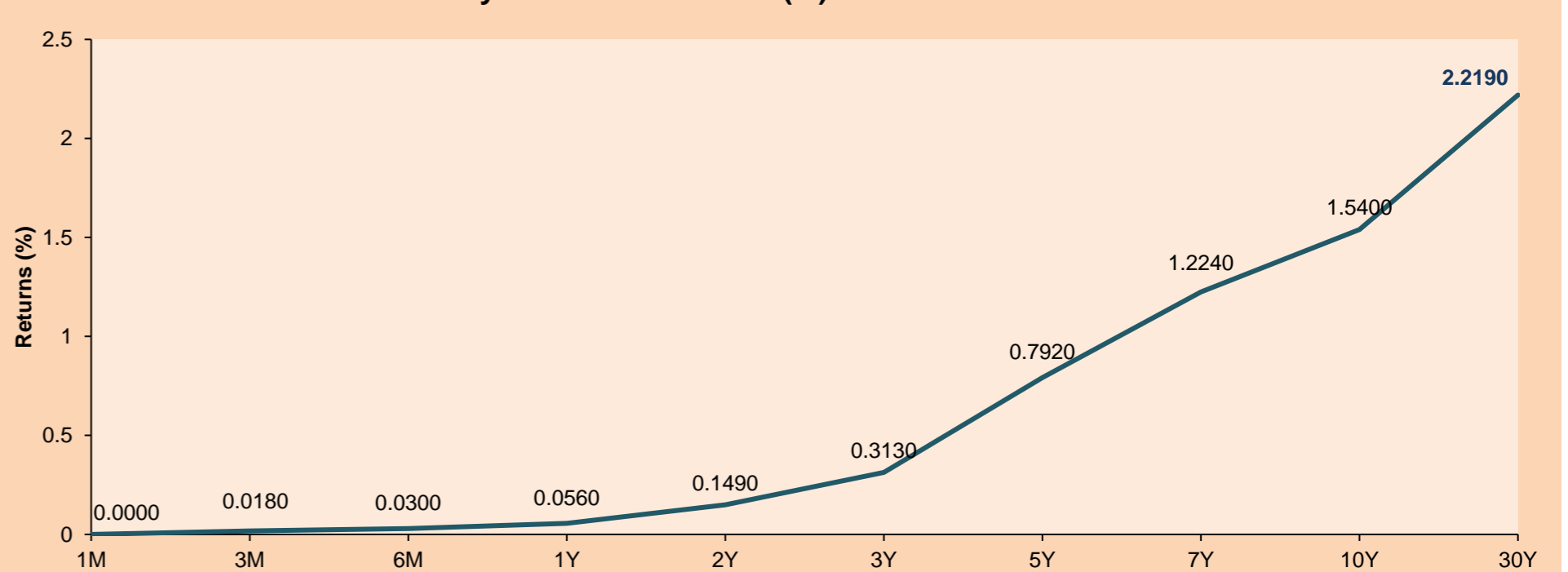
Asia:

Major Asian indices closed mostly higher due to positive expectations brought about by high vaccination rates. However, concerns about the increase of cases in India, Japan, Korea and Latin America weighed on investors. Thus, in Hong Kong, the Hang Seng was boosted by technology companies; assets such as Meituan +3.47% and Tencent +1.97% were among the most outstanding stocks during the day. In Japan, major indices closed higher amid massive buying in cyclical sector stocks after the sharp drop of the last two days. Chips-related stocks led the day's gains Tokyo Electron +4.58%, Advantest +4.02% and Shin-Etsu Chemical +3.45%. Elsewhere, in South Korea, the KOSPI closed higher on a day of elevated retail buying buoyed by the outlook for January and March corporate results. Finally, the Australian index marked its best day in 2 weeks driven by gold miners. Thus, Hang Seng +0.47%; Shanghai Composite -0.23%; NIKKEI +2.38%; S&P/ASX 200 +0.37%; KOSPI +0.18% closed mostly with gains.

ETFs

ETFs	Curr.	Close	1D	5D	30 D	YTD	Exchange
SPDR S&P 500 ETF TRUST	USD	412.27	-0.91%	-0.87%	5.85%	10.27%	NYSE Arca
ISHARES MSCI EMERGING MARKET	USD	53.85	-0.35%	-0.66%	1.82%	4.22%	NYSE Arca
ISHARES IBOXX HIGH YLD CORP	USD	87.14	-0.18%	-0.39%	0.79%	-0.18%	NYSE Arca
FINANCIAL SELECT SECTOR SPDR	USD	34.73	-1.11%	-1.19%	4.73%	17.81%	NYSE Arca
VANECK GOLD MINERS	USD	36.18	-1.76%	1.32%	10.85%	0.44%	NYSE Arca
ISHARES RUSSELL 2000 ETF	USD	221.58	-0.41%	-1.21%	2.08%	13.02%	NYSE Arca
SPDR GOLD SHARES	USD	167.04	-0.65%	1.02%	3.23%	-6.35%	NYSE Arca
ISHARES 20+ YEAR TREASURY BO	USD	140.39	0.44%	0.03%	2.11%	-10.99%	NASDAQ GM
INVESTCO QUQ TRUST SERIES 1	USD	335.20	-1.21%	-1.88%	5.67%	6.84%	NASDAQ GM
ISHARES NASDAQ BIOTECHNOLOGY	USD	154.66	0.06%	0.96%	2.01%	2.09%	NASDAQ GM
ENERGY SELECT SECTOR SPDR	USD	47.11	-1.17%	-3.44%	-1.51%	24.30%	NYSE Arca
PROSHARES ULTRA VIX ST FUTUR	USD	4.93	9.31%	6.94%	-24.15%	-53.71%	Cboe BZX
UNITED STATES OIL FUND LP	USD	42.09	0.77%	-2.73%	6.91%	27.51%	NYSE Arca
ISHARES MSCI BRAZIL ETF	USD	35.40	0.85%	1.93%	6.59%	-4.50%	NYSE Arca
SPDR S&P OIL & GAS EXP & PR	USD	74.84	-0.83%	-5.04%	-4.41%	27.93%	NYSE Arca
UTILITIES SELECT SECTOR SPDR	USD	66.67	-0.71%	0.00%	6.55%	6.33%	NYSE Arca
ISHARES US REAL ESTATE ETF	USD	97.61	-0.41%	1.54%	7.44%	13.96%	NYSE Arca
SPDR S&P BIOTECH ETF	USD	134.54	1.33%	0.79%	-2.89%	-4.43%	NYSE Arca
ISHARES IBOXX INVESTMENT GRA	USD	131.56	0.10%	-0.31%	1.61%	-4.76%	NYSE Arca
ISHARES JP MORGAN USD EMERGI	USD	111.24	0.15%	-0.30%	1.92%	-4.03%	NASDAQ GM
REAL ESTATE SELECT SECT SPDR	USD	42.00	-0.43%	1.60%	8.25%	14.88%	NYSE Arca
ISHARES CHINA LARGE-CAP ETF	USD	46.97	0.30%	0.69%	0.28%	1.16%	NYSE Arca
CONSUMER STAPLES SPDR	USD	69.75	-0.74%	0.49%	4.10%	3.41%	NYSE Arca
VANECK JR GOLD MINERS	USD	49.95	-2.31%	0.32%	9.08%	-7.91%	NYSE Arca
SPDR BBG BARC HIGH YIELD BND	USD	108.84	-0.10%	-0.35%	0.86%	-0.09%	NYSE Arca
VANGUARD REAL ESTATE ETF	USD	97.21	-0.54%	1.36%	6.82%	14.46%	NYSE Arca
GRAYSCALE BITCOIN TRUST BTC	USD	41.32	-8.89%	-21.44%	-11.61%	29.13%	OTC US

USA Treasury Bonds Yield Curve (%)



Source: Bloomberg

LIMA

Stocks

Ticker	Currency	Price	1D*	5D*	30D*	YTD*	Frequency	Volume (US\$)	Beta	Dividend Yield (%)	Price Earning	Market Cap. (M US\$)	Economic Sector*	Index Weight
▼ ALICORC1 PE**	S/.	6.83	-0.91%	-2.49%	-3.77%	-5.13%	100.00%	1,327,266	0.70	3.66	17.83	1,552.14	Industrial	3.53%
▼ ATACOB1 PE**	S/.	0.13	-3.85%	-16.67%	-19.35%	-9.42%	27.78%	5,276	1.09	0.00	-	31.43	Mining	1.02%
▼ BACKUS1 PE**	S/.	18.95	-4.05%	-17.25%	-16.11%	-5.96%	88.89%	165,541	0.55	1.85	9.09	7,809.09	Industrial	0.82%
▼ BAP PE**	US\$	123.17	-1.66%	-13.21%	-12.27%	-23.31%	100.00%	6,553,774	1.56	7.15	-	11,625.07	Diverse	5.82%
▼ BVN PE**	US\$	9.90	-5.71%	-7.48%	-5.71%	-17.50%	100.00%	1,562,879	1.04	0.00	-	2,728.78	Mining	5.88%
- CASAGRC1 PE**	S/.	5.40	0.00%	-11.18%	-8.47%	13.68%	88.89%	66,292	0.57	4.18	9.70	121.07	Agricultural	1.31%
▼ BBVAC1 PE**	S/.	2.02	-9.42%	-17.55%	-16.53%	-6.91%	100.00%	473,441	0.82	2.24	21.14	3,510.49	Finance	2.85%
▼ CORAREI1 PE**	S/.	0.85	-9.57%	-22.73%	-24.78%	-4.49%	94.44%	85,614	0.81	11.36	5.07	363.85	Industrial	1.72%
▼ CPACASC1 PE**	S/.	5.15	-1.90%	-7.54%	-12.71%	-2.83%	88.89%	516,232	0.62	4.47	36.79	636.24	Industrial	2.38%
▼ CVERDEC1 PE**	US\$	19.40	-6.51%	-19.17%	-25.10%	-7.27%	100.00%	1,250,926	1.07	2.95	24.74	6,791.09	Mining	5.25%
▼ ENGEPEC1 PE**	S/.	1.95	-4.88%	-20.41%	-25.57%	-2.50%	94.44%	567,908	0.49	14.63	11.92	1,473.40	Public Services	1.44%
▼ ENDISPC1**	S/.	4.20	-13.40%	-27.46%	-30.58%	-22.22%	61.11%	95,093	0.49	4.07	9.85	713.86	Public Services	0.98%
▼ FERREYC1 PE**	S/.	1.65	-8.33%	-20.67%	-26.99%	-5.17%	100.00%	1,146,904	0.72	11.04	10.97	428.50	Diverse	4.90%
▲ AENZAC1 PE**	S/.	1.59	16.06%	-3.05%	-5.36%	-8.62%	77.78%	619,246	0.93	0.00	-	369.00	Diverse	4.05%
▼ IFS PE**	US\$	26.35	-4.18%	-16.35%	-7.54%	-14.84%	100.00%	171,280	1.31	6.64	29.82	3,042.05	Diverse	7.22%
▼ INRETC1 PE**	US\$	35.00	-1.96%	-11.84%	-18.98%	-10.71%	100.00%	1,122,766	0.66	1.61	44.67	3,598.26	Diverse	5.28%
▼ LUSURC1 PE**	S/.	12.00	-3.23%	-15.79%	-4.00%	-52.94%	94.44%	11,730	0.76	7.17	12.08	1,555.34	Public Services	1.81%
▼ MINSUR1 PE**	S/.	2.28	-5.00%	-17.09%	-18.28%	23.24%	94.44%	475,135	0.81	0.00	59.93	1,749.60	Mining	3.09%
▼ PML PE**	US\$	0.12	-11.76%	-21.05%	-22.58%	13.21%	88.89%	106,055	1.47	0.00	-	31.70	Mining	2.12%
▼ RELAPAC1 PE**	S/.	0.10	-9.52%	-26.36%	-27.48%	37.68%	100.00%	83,132	0.86	0.00	-	210.36	Industrial	2.12%
▼ SCCO PE**	US\$	69.24	-3.04%	-6.23%	1.82%	5.07%	100.00%	219,185	0.94	2.46	32.19	53,527.59	Mining	2.14%
▼ SIDERC1 PE**	S/.	0.81	-5.81%	-27.68%	-19.00%	-4.71%	94.44%	44,946	0.83	27.71	6.49	264.74	Industrial	1.43%
▼ TV PE**	US\$	0.14	-4.00%	-10.00%	-2.04%	-2.04%	94.44%	56,598	1.46	0.00	-	142.43	Mining	2.93%
▼ UNACEMC1 PE**	S/.	1.28	-8.57%	-23.81%	-28.89%	-17.42%	100.00%	394,614	0.99	1.02	28.04	619.43	Industrial	3.00%
▼ VOLCABC1 PE**	S/.	0.67	-9.46%	-17.28%	-16.25%	28.85%	100.00%	667,180	1.09	0.00	-	726.99	Mining	5.90%
▼ NEXAPEC1 PE**	S/.	2.80	-8.20%	-18.37%	-22.22%	-1.06%	66.67%	2,979	1.11	0.00	-	987.60	Mining	1.56%

Quantity of shares: 26
Source: Bloomberg, Economática
* Bloomberg Industry Classification System
** PER is used in the stock market and original currency of the instrument
*Legend: Variation 1D: 1 Day; 5D: 5 Days, 1M: 1 Month; YTD: Var.% 12/31/20 to date

Up 1
Down 24
Hold 1

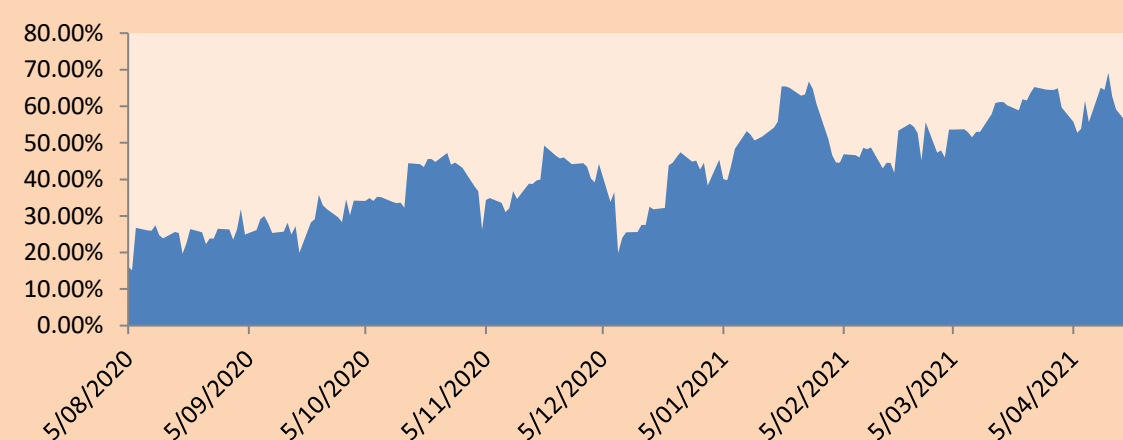
Sectorial Indices

	Close	1D*	5D*	30D*	YTD*	Beta
▼ S&P/BVLMining	403.55	-3.26%	-5.54%	-2.92%	3.49%	0.91
▼ S&P/BVLConsumer	1,026.70	-2.15%	-10.99%	-15.95%	-5.69%	0.47
▼ S&P/BVLIndustrials	180.63	-2.78%	-14.17%	-18.53%	-5.21%	0.66
▼ S&P/BVLFinancials	838.50	-1.00%	-10.65%	-10.99%	-18.90%	1.61
▼ S&P/BVLConstruction	193.12	-0.22%	-12.93%	-16.26%	-7.65%	0.68
▼ S&P/BVLPublicSvcs	537.95	-5.39%	-16.75%	-17.67%	-12.40%	0.31
▼ S&P/BVLElectricUtil	525.18	-5.39%	-16.75%	-17.67%	-12.40%	0.31

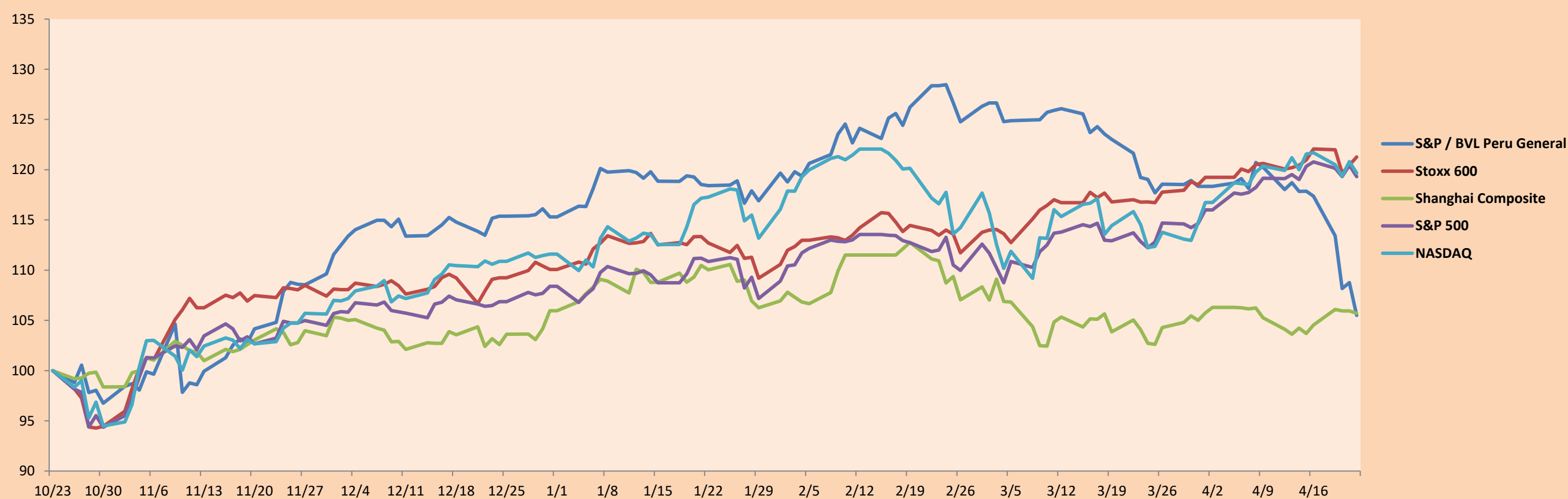
S&P/BVLConstructionTRPEN

*Legend: Variation 1D: 1 Day; 5D: 5 Days, 1M: 1 Month; YTD: Var.% 12/31/20 to date

Correlation Graph of Returns of Mining Index against Metallic Index of London (3 months)



Indices (6 months)



Base: 23/10/20=100
Source: Bloomberg

Capital Market Laboratory Coordinator: Economist Bruno Bellido
Collaboration: María Camarena, Alonso García, Nicolás Muñoz, Adrián Paredes y Jairo Valverde
email: pulsobursatil@ulima.edu.pe
facebook: www.facebook.com/pulsobursatil.ul

SOVEREIGN RATING

RISK RATINGS

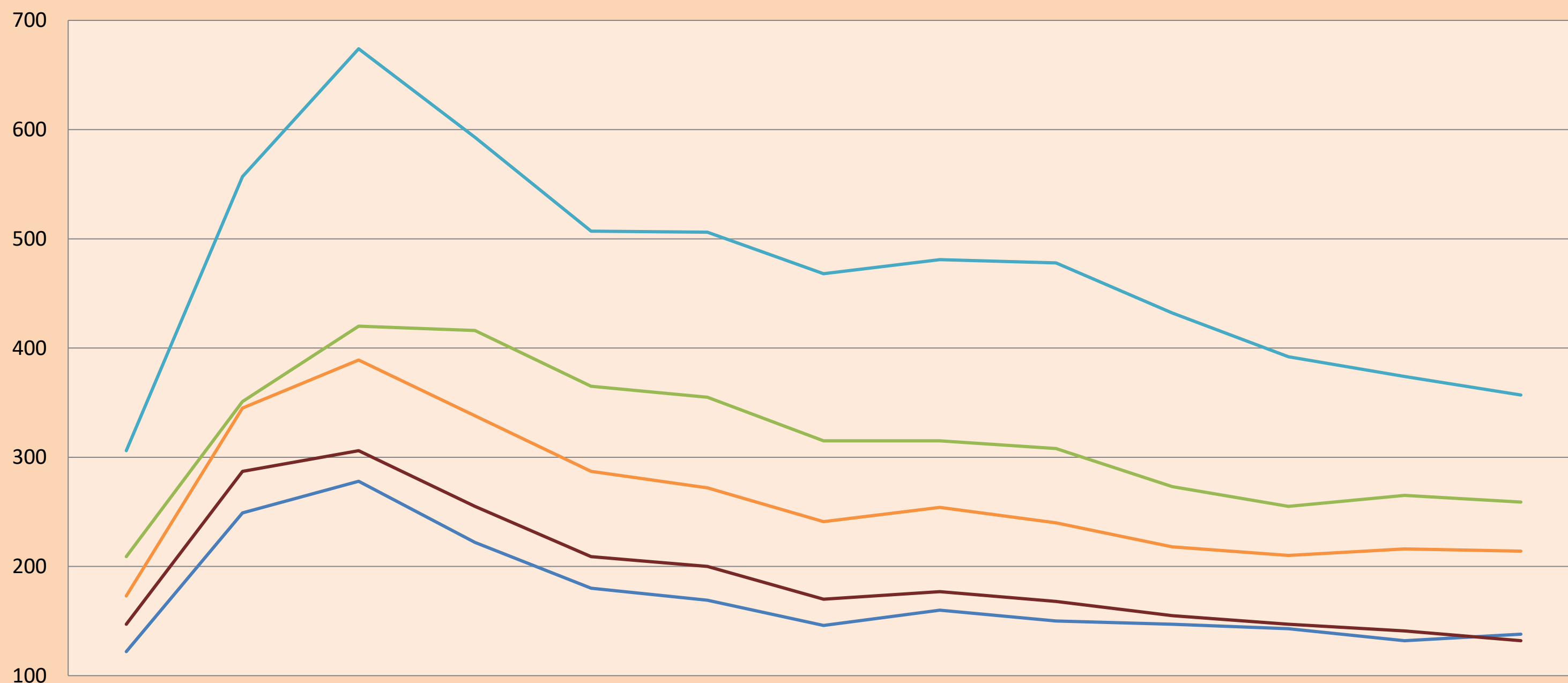
Moody's	S&P	Fitch	
Aaa	AAA	AAA	Prime
Aa1	AA+	AA+	High credit quality
Aa2	AA	AA	
Aa3	AA-	AA-	
A1	A+	A+	Medium-high grade, with low credit risk
A2	A	A	
A3	A-	A-	
Baa1	BBB+	BBB+	Moderate Credit Risk
Baa2	BBB	BBB	
Baa3	BBB-	BBB-	
Ba1	BB+	BB+	It has speculative elements and it is subject to substantial credit risk
Ba2	BB	BB	
Ba3	BB-	BB-	
B1	B+	B+	It is considered speculative and it has high credit risk
B2	B	B	
B3	B-	B-	
Caa1	CCC+	CCC	Bad credit conditions and it is subject to high credit risk
Caa2	CCC		
Caa3	CCC-		
Ca	CC	DDD	Very close to default or in default
	C		
C	D		

Source: Bloomberg

Latin America Credit Rating			
Clasificadora de riesgo			
Country	Moody's	Fitch	S&P
Peru	A3	BBB+	BBB+
México	Ba2	BB-	BB-
Venezuela	C	WD	SD
Brazil	Ba2	BB-	BB-
Colombia	Baa2	BBB-	BBB-
Chile	A1	A-	A
Argentine	Ca	WD	CCC+
Panama	Baa2	BBB-	BBB

Source: Bloomberg

LATAM Country Risk (bps)



	Feb-20	Mar-20	Abr-20	May-20	Jun-20	Jul-20	Ago-20	Set-20	Oct-20	Nov-20	Dic-20	Ene-21	Feb-21
Perú	122	249	278	222	180	169	146	160	150	147	143	132	138
Brasil	209	351	420	416	365	355	315	315	308	273	255	265	259
México	306	557	674	593	507	506	468	481	478	432	392	374	357
Colombia	173	345	389	338	287	272	241	254	240	218	210	216	214
Chile	147	287	306	255	209	200	170	177	168	155	147	141	132

Source: BCRP

Capital Market Laboratory Coordinator: Economist Bruno Bellido
Collaboration: Maria Camarena, Alonso García, Nicolas Muñoz, Adrian Paredes y Jairo Valverde
email: pulsobursatil@ulima.edu.pe
facebook: www.facebook.com/pulsobursatil.ul