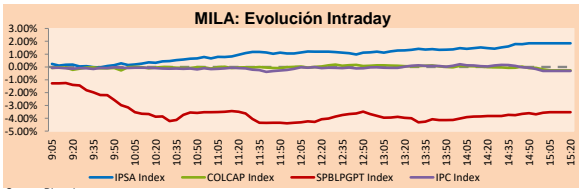


MILA

Lima, June 9, 2021

Main Indexes	Close	1 D	5 D	1 M	YTD	Cap. Burs. (US\$ bill)
▲ IPSA (Chile)	4,268.36	2.30%	-2.86%	-7.10%	2.18%	120.22
▲ IGPA (Chile)	21,464.34	1.97%	-2.96%	-7.40%	2.17%	143.59
▼ COLSC (Colombia)	980.55	-0.37%	0.02%	-0.13%	-7.41%	4.67
▼ COLCAP (Colombia)	1,255.31	-0.26%	2.63%	-4.30%	-12.70%	77.44
▼ S&P/BVL (Perú)*	19,667.39	-3.52%	-6.87%	-6.16%	-5.55%	97.37
▼ S&P/BVL SEL (Perú)	513.77	-3.34%	-7.79%	-7.23%	-6.83%	85.85
▼ S&P/BVL LIMA 25	25,063.22	-1.57%	-6.48%	-8.26%	-0.54%	96.55
▼ IPC (México)	50,823.30	-0.08%	0.15%	1.92%	15.33%	314.52
▲ S&P MILA 40	496.55	0.13%	-2.67%	-8.02%	-7.12%	6,207.34

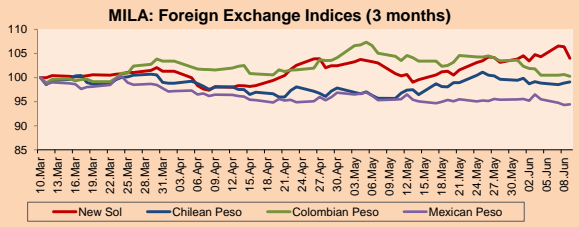
*Legend: Variation 1D: 1 day; 5D: 5 days; 1M: 1 Month; YTD: Var% 12/31/20 to date



Source: Bloomberg

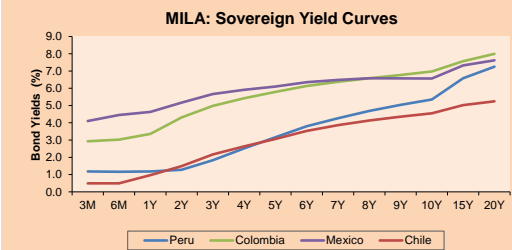
Currency	Price	1D*	5D*	30 D*	YTD*
▼ Sol (PEN)	3,8429	-2.26%	0.53%	3.17%	6.22%
▼ Chilean Peso (CLP)	719.67	0.26%	0.41%	3.58%	1.11%
▼ Colombian Peso (COP)	3,591.90	-0.36%	-1.59%	-3.97%	4.73%
▲ Mexican Peso (MXN)	19.74	0.14%	-0.82%	-1.05%	-0.90%

*Legend: Variation 1D: 1 day; 5D: 5 days; 1M: 1 Month; YTD: Var% 12/31/20 to date



Base: 10/03/21=100
Source: Bloomberg

Fixed Income	Currency	Price	Bid Yield (%)	Ask Yield (%)	Duration
PERU 7.35 07/21/25	USD	122.831	1.65	1.53	3.58
PERU 4.125 08/25/27	USD	111.55	2.18	2.08	5.52
PERU 8.75 11/21/33	USD	155.818	3.30	3.22	8.75
PERU 6.55 03/14/37	USD	135.835	3.59	3.53	10.33
PERU 5.625 11/18/2050	USD	132.262	3.82	3.77	16.42
CHILE 2.25 10/30/22	USD	102.564	0.56	0.23	1.37
CHILE 3.125 01/21/26	USD	108.62	1.25	1.15	4.30
CHILE 3.625 10/30/42	USD	105.184	3.31	3.26	15.36
COLOM 11.85 03/09/28	USD	159.838	2.40	2.08	5.15
COLOM 10.375 01/28/33	USD	150.269	4.82	4.61	7.62
COLOM 7.375 09/18/37	USD	132.741	4.55	4.48	10.43
COLOM 6.125 01/18/41	USD	119.765	4.61	4.56	12.08
MEX 4 10/02/23	USD	119.765	4.614	4.557	12.08
MEX5.55 01/45	USD	120.867	4.17	4.13	14.09



Source: Bloomberg

Equity

Largest gains	Exchange	Currency	Price	▲%
ENTEL	Chile	CLP	3590.00	6.27
VOLCAN CIA MIN-B	Peru	PEN	0.63	5.00
ANDINA-PREF B	Chile	CLP	1650.00	4.10
FERREYCORP SAA	Peru	PEN	1.54	4.05
BANCO CRED INVER	Chile	CLP	33228.00	3.84

Per Turnover	Exchange	Amount (US\$)
GRUPO F BANORT-O	Mexico	40,124,236
WALMART DE MEXIC	Mexico	34,027,199
GRUPO MEXICO-B	Mexico	32,145,562
AMERICA MOVIL-L	Mexico	26,908,674
FOMENTO ECON-UBD	Mexico	19,811,638

Largest losses	Exchange	Currency	Price	▼%
CREDICORP LTD	Peru	USD	125.8	-5.94
BUENAVENTURA-ADI	Peru	USD	10.62	-3.19
GRUPO FIN INB-O	Mexico	MXN	20.66	-3.10
GRUPO CARSO-A1	Mexico	MXN	65.01	-2.59
GRUPO NUTRESA SA	Colombia	COP	21820	-2.59

Per Volume	Exchange	Volume
ITAU CORPBANCA	Chile	278,050,630
BANCO SANTANDER	Chile	136,022,927
BANCO DE CHILE	Chile	66,204,139
ENEL CHILE SA	Chile	62,892,356
ENEL AMERICAS SA	Chile	42,020,470

MILA

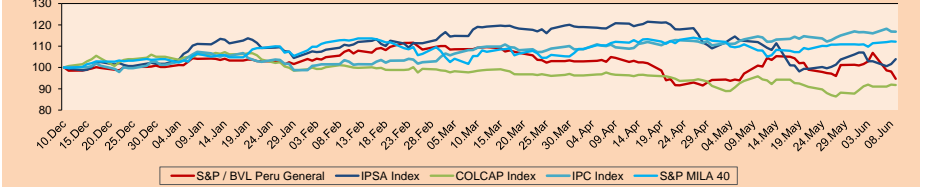
Peru: The General Index of the BVL ended today's session with a negative result of -3.52%. The index maintains an annual accumulated negative trend of -5.55% in local currency, while the adjusted return in dollars amounts to -11.07%. Then, the S&P / BVL Peru SEL varied by -3.34% while the S&P / BVL LIMA 25 by -1.57%. The PEN spot reached 5 / 3,8429. Headline: Lima Stock Exchange closed lower in its main indicators this Wednesday

Chile: The IPSA index ended the day with a positive return of + 2.30%. The sectors that benefited the most from the conference were Communication Services (+6.27%) and Energy (+3.43%). The stocks with the best performance were ENTELChile SA (+ 6.27%) and Embotelladora Andina SA (+ 4.10%). Headline: Peru stock market fails to rebound and in Chile Falabella and Parque Arauco with new falls

Colombia: The COLCAP index closed today with a negative return of -0.26%. The most affected sectors of the day were Non-Cyclical Consumption (-2.59%) and Energy (-1.06%). The worst performing stocks were Grupo Nutresa (-2.59%) and Grupo de Inversiones Suamericana SA (-1.49%). Headline: Dollar in Colombia deepened losses

Mexico: The IPC index closed the day with a negative return of -0.08%. The most affected sectors of the day were Health (-2.47%) and Finance (-0.43%). The worst performing stocks were Grupo Financiero Inbursa (-3.10%) and Grupo Carso SAB de CV (-2.59%) Owner: Arturo Herrera in Banxico gives certainty, says the private sector

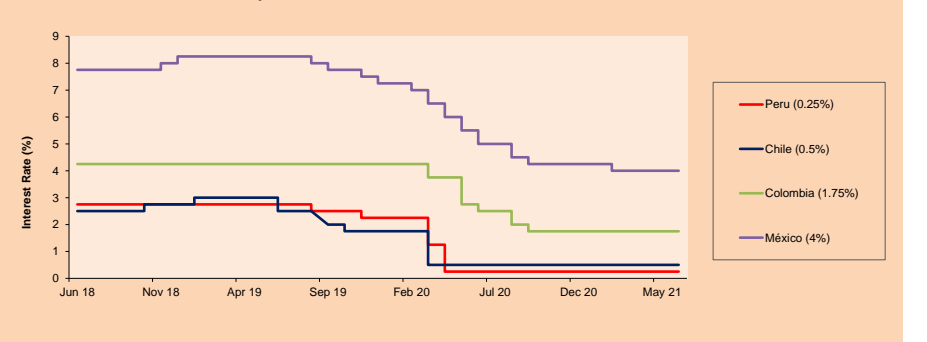
MILA: Stock Indices (6 months)



Base: 11/12/20=100
Source: Bloomberg

ETFs	Curr.	Close	1D	5D	30 D	YTD	Exchange
▼ iShares MSCI All Peru Caped Index Fund	USD	30.5	-3.54%	-8.82%	-12.61%	-12.05%	NYSE Arca
▲ iShares MSCI All Chile Caped Index Fund	USD	29.57	1.69%	-2.25%	-10.26%	-2.12%	Cboe BZX
▲ Global X MSCI Colombia	USD	10.57	1.49%	4.03%	3.17%	-6.95%	NYSE Arca
▼ iShares MSCI Mexico Capped	USD	49.54	-0.34%	1.60%	4.29%	15.24%	NYSE Arca
▼ iShares MSCI Emerging Markets	USD	55.28	-0.29%	-1.44%	2.92%	6.99%	NYSE Arca
▼ Vanguard FTSE Emerging Markets	USD	54.52	-0.07%	-1.12%	3.85%	8.80%	NYSE Arca
▼ iShares Core MSCI Emerging Markets	USD	67.23	-0.25%	-1.34%	3.08%	8.37%	NYSE Arca
▼ iShares JP Morgan Emerging Markets Bonds	USD	64.92	-0.15%	-0.66%	2.08%	6.29%	Cboe BZX
▼ Morgan Stanley Emerging Markets Domestic	USD	6.26	-0.32%	-0.32%	1.79%	-0.48%	New York

MILA: Policy Rate



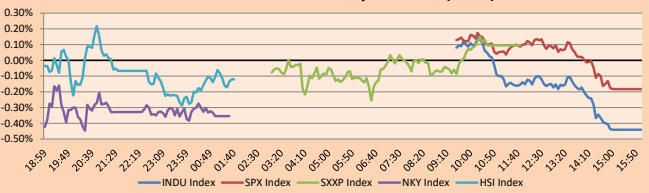
Source: Bloomberg

WORLD

Main Indices	Close	1 D*	5 D*	1 M*	YTD*	Market Cap. (US\$ Mill.)
▼ Dow Jones (USA)	34,447.14	-0.44%	-0.44%	-0.85%	12.55%	10,206,931
▼ Standard & Poor's 500 (EEUU)	4,219.55	-0.18%	0.27%	0.74%	12.34%	37,268,692
▼ NASDAQ Composite (USA)	13,911.75	-0.09%	1.13%	3.80%	7.94%	23,218,989
▲ Stoxx EUROPE 600 (Europe)	454.44	0.09%	0.69%	2.03%	13.89%	10,274,104
▲ DAX (Germany)	15,581.14	-0.38%	-0.14%	1.17%	13.58%	1,148,150
▼ FTSE 100 (United Kingdom)	7,081.01	-0.20%	-0.38%	-0.60%	9.60%	1,448,039
▲ CAC 40 (France)	6,563.45	0.19%	0.64%	2.78%	18.23%	1,782,215
▲ IBEX 35 (Spain)	9,156.10	0.03%	-0.27%	0.13%	13.41%	503,987
▼ MSCI AC Asia Pacific Index	208.87	-0.50%	-0.67%	0.31%	4.48%	27,196,387
▲ HANG SENG (Hong Kong)	28,742.63	-0.13%	-1.89%	0.83%	5.88%	4,502,965
▲ SHANGHAI SE Comp. (China)	3,591.40	0.32%	-0.16%	4.95%	3.59%	6,986,971
▲ NIKKEI 225 (Japan)	28,860.80	-0.35%	-0.29%	-1.82%	5.60%	4,001,787
▲ S&P/ASX 200 (Australia)	7,270.20	-0.31%	0.73%	1.78%	10.83%	1,764,090
▼ KOSPI (South Korea)	3,216.18	-0.08%	0.15%	-0.71%	12.28%	1,938,854

*Legend: Variation 1D: 1 Day; 5D: 5 Days; 1M: 1 Month; YTD: Var.% 12/31/20 to date

Global Markets: Intraday Evolution (var %)

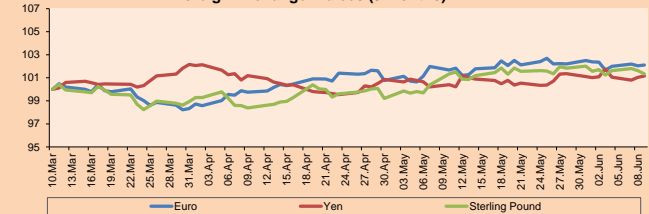


Source: Bloomberg

Currency	Price	1 D*	5 D*	1 M*	YTD*
▲ Euro	1.2180	0.06%	-0.25%	0.42%	-0.29%
▲ Yen	109.6300	0.12%	0.06%	0.75%	6.18%
▲ Sterling Pound	1.4118	-0.28%	-0.37%	0.00%	3.28%
▼ Yuan	6.3872	-0.21%	0.10%	-0.46%	-2.14%
▼ Hong Kong Dollar	7.7597	-0.01%	0.01%	-0.07%	0.09%
▲ Brazilian Real	5.0624	0.56%	-0.28%	-3.16%	-2.62%
▲ Argentine Peso	95.0575	0.05%	0.30%	1.21%	12.97%

*Legend: Variation 1D: 1 Day; 5D: 5 Days; 1M: 1 Month; YTD: Var.% 12/31/20 to date

Foreign Exchange Indices (3 months)

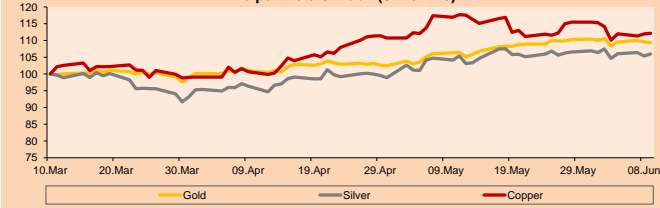


Base: 10/03/21=100
Source: Bloomberg

Commodities	Close	1 D*	5 D*	1 M*	YTD*
▼ Oro (US\$ Oz. T) (LME)	1,888.57	-0.23%	-1.04%	2.86%	-0.52%
▲ Plata (US\$ Oz. T) (LME)	27.77	0.56%	-1.42%	1.70%	5.19%
▲ Cobre (US\$ TM) (LME)	9,952.75	0.15%	-1.76%	-4.10%	28.44%
▲ Zinc (US\$ TM) (LME)	2,996.25	0.02%	-2.12%	0.68%	0.09%
▼ Petróleo WTI (US\$ Barril) (NYM)	69.96	-0.13%	1.64%	7.75%	44.19%
▼ Estarño (US\$ TM) (LME)	32,559.00	-1.06%	-1.14%	-0.16%	58.48%
▼ Plomo (US\$ TM) (LME)	2,188.11	0.79%	-2.09%	-0.30%	10.75%
- Azúcar #11 (US\$ Libra) (NYB-ICE)	17.75	0.00%	0.11%	1.14%	26.42%
- Café (US\$ TM) (NYB-ICE)	2,392.00	-1.08%	-3.00%	-6.16%	-4.55%
▼ Café Arábica (US\$ TM) (NYB-ICE)	159.30	-0.34%	-2.36%	6.20%	19.50%

*Legend: Variación 1D: 1 Día; 5D: 5 Días; 1M: 1 Mes; YTD: Var.% 31/12/20 a la fecha

Principal Metals Index (3 months)



Base: 10/03/21=100
Source: Bloomberg

Equity

Germany (Stocks from DAX Index)

Largest gains	Curr.	Price	▲ %	Exchange	Largest losses	Curr.	Price	▼ %	Exchange
FRE GY	EUR	45.235	0.96	Xetra	DBK GY	EUR	12.018	-2.15	Xetra
FME GY	EUR	68.28	0.35	Xetra	DHER GY	EUR	110.55	-1.51	Xetra
MTX GY	EUR	209.9	0.91	Xetra	MUV2 GY	EUR	231.3	-1.34	Xetra
BAYN GY	EUR	53.01	0.51	Xetra	HEI GY	EUR	74	-1.33	Xetra

Europe (Stocks from STOXX EUROPE 600)

Largest gains	Curr.	Price	▲ %	Exchange	Largest losses	Curr.	Price	▼ %	Exchange
DUPN SE	CHF	61.76	9.43	SIX Swiss Ex	ZAL GY	EUR	93.8	-4.36	Xetra
ADP FP	EUR	122.7	8.15	EN Paris	ANA SQ	EUR	134.8	-4.33	Soc.Bol SIBIE
SOCI SS	SEK	154.6	7.29	Stockholm	VOE AV	EUR	35.3	-3.50	Vienna
GLPG NA	EUR	65.57	6.62	EN Amsterdam	BWY LN	Gbp	3476	-3.44	Londres

Global Overview:

United States:

Major U.S. indexes closed the day lower as investors await new inflation data. Regarding tensions with China, Washington lawmakers passed a bill designed to boost U.S. ability to compete against Chinese technology by providing funding for semiconductor research and production amid a logjam in the chip supply chain. Thus, the S&P 500 closed lower dragged lower by the Financials -1.06% and Industrials -1.03% after President Joe Biden reversed course in negotiations to reach a deal on infrastructure spending. The Financials sector was hurt as Treasury yields fell below 1.5%. In individual stocks Aethion Medical rose 388.2% driven by retail buyers. In this regard, Vanda Research notes that retail volume resumed its January peak. Finally, PFIZER INC gained 2.5% after the U.S. government announced plans to donate 500 doses of vaccines to approximately 100 countries over the next two years. Thus, DOW JONES -0.44%; S&P 500 -0.18%; NASDAQ -0.09% ended the day with losses.

Europe:

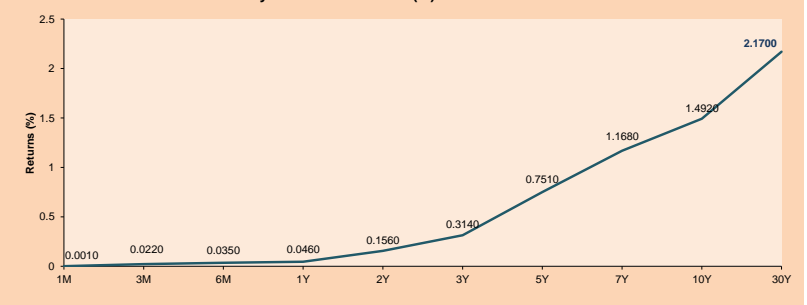
Major European indexes ended the session with mixed returns as investors refrained from making big bets ahead of the European Central Bank's policy decisions and the U.S. inflation reading. European stocks remained near all-time highs. The pan-European STOXX 600 index remained just below the all-time high achieved in the previous session. Travel stocks shined today after the U.S. Centers for Disease Control and Prevention (CDC) said it is easing travel advisories in 110 countries. In the UK, despite the promise to accelerate the opening of travel with the US between Biden and Johnson, the index closed lower as major mining stocks fell. Overall, attention remains focused on the FED meeting. Meanwhile, according to Reuters, the ECB is likely to maintain the current pace of bond buying at its meeting on Thursday. Among stock market shares we highlight aviation stocks Air France KLM +3.27%, Lufthansa +2.89% and IAG +2.65%, while we see major miners Rio Tinto -2.00%, Anglo American -2.53% and BHP Group -2.07% falling. Thus, FTSE 100 -0.20% and DAX -0.38% closed in negative; while CAC 40 +0.19% and STOXX 600 +0.09% closed the day with positive returns.

Asia:

The main Asian indexes ended the session with mixed returns due to the publication of the Chinese inflation report and are still awaiting the new American inflation report. The Chinese market closed with positive results after the publication of its inflation data and that these did not reach the objective. So far the annual inflation in China is 1.3% and at a monthly level -0.25. The sectors with the most profits were Energy +2.93% and Public Services +1.22%. Meanwhile, the Hang Seng closed lower due to falls within the -0.91% and Information Technology -0.59% sectors, which offset the positive effect of the inflationary report. The Japanese market closed lower as a result of Chinese inflation and falls in the Real Estate, Paper and Wood Pulp and Public Transport sectors. The Korean market closed lower dragged by the inflationary report. Finally, the Australian market closed lower after losses in the sectors of First Needs -1.44%, Real Estate -0.99% and Information Technology -0.76%, in turn, has been affected by falls in the value of futures contracts for gold. Thus, NIKKEI -0.35%; HANG SENG -0.13%; CSI 300 +0.08%; SHANGHAI COMPOSITE +0.32%; KOSPI -0.97% and S & P / ASX 200 -0.31%.

ETFs	Curr.	Close	1D	5D	30 D	YTD	Exchange
SPDR S&P 500 ETF TRUST	USD	421.65	-0.15%	0.31%	0.89%	12.78%	NYSE Arca
ISHARES MSCI EMERGING MARKET	USD	55.28	-0.29%	-1.44%	2.92%	6.99%	NYSE Arca
ISHARES IBOXX HIGH YLD CORP	USD	87.43	0.08%	0.19%	0.34%	0.15%	NYSE Arca
FINANCIAL SELECT SECTOR SPDR	USD	37.76	-0.94%	-1.36%	0.03%	28.09%	NYSE Arca
VANECK GOLD MINERS	USD	38.00	-0.26%	-3.89%	1.86%	5.50%	NYSE Arca
ISHARES RUSSELL 2000 ETF	USD	231.34	-0.67%	1.32%	5.32%	17.99%	NYSE Arca
SPDR GOLD SHARES	USD	176.98	-0.19%	-1.00%	2.83%	-0.77%	NYSE Arca
ISHARES 20+ YEAR TREASURY BO	USD	141.69	0.88%	2.28%	2.81%	-10.17%	NASDAQ GM
INVESTCO QQQ TRUST SERIES 1	USD	336.84	0.02%	1.01%	3.40%	7.36%	NASDAQ GM
ISHARES NASDAQ BIOTECHNOLOGY	USD	160.51	1.54%	6.24%	9.17%	5.95%	NASDAQ GM
ENERGY SELECT SECTOR SPDR	USD	55.64	-0.63%	0.74%	3.71%	46.81%	NYSE Arca
PROSHARES ULTRA VIX ST FUTUR	USD	34.57	2.64%	-3.92%	-19.98%	-67.54%	Cboe BZX
UNITED STATES OIL FUND LP	USD	47.58	-0.63%	1.45%	6.97%	44.14%	NYSE Arca
ISHARES MSCI BRAZIL ETF	USD	41.39	-0.60%	0.39%	9.21%	11.65%	NYSE Arca
SPDR S&P OIL & GAS EXP & PR	USD	97.76	-0.55%	1.46%	14.25%	67.11%	NYSE Arca
UTILITIES SELECT SECTOR SPDR	USD	65.53	0.89%	0.66%	-1.77%	4.51%	NYSE Arca
ISHARES US REAL ESTATE ETF	USD	104.71	0.22%	1.67%	6.16%	22.25%	NYSE Arca
SPDR S&P BIOTECH ETF	USD	134.71	0.94%	5.87%	9.44%	-4.31%	NYSE Arca
ISHARES IBOXX INVESTMENT GRA	USD	132.96	0.36%	0.97%	1.47%	-3.74%	NYSE Arca
ISHARES JP MORGAN US EMERGI	USD	112.60	0.36%	0.70%	1.12%	-2.86%	NASDAQ GM
REAL ESTATE SELECT SECT SPDR	USD	45.27	0.11%	1.48%	6.37%	23.82%	NYSE Arca
ISHARES CHINA LARGE-CAP ETF	USD	46.08	0.00%	-2.50%	3.00%	-0.75%	NYSE Arca
CONSUMER STAPLES SPDR	USD	70.46	-0.48%	-0.52%	-1.01%	4.46%	NYSE Arca
VANECK JR GOLD MINERS	USD	52.68	-0.25%	-4.53%	3.56%	-2.88%	NYSE Arca
SPDR BGC BANC HIGH YIELD BND	USD	109.28	0.10%	0.30%	0.36%	0.29%	NYSE Arca
VANGUARD REAL ESTATE ETF	USD	104.75	0.13%	1.83%	6.44%	23.34%	NYSE Arca
GRAYSCALE BITCOIN TRUST BTC	USD	30.10	9.65%	-3.22%	-31.93%	-6.94%	OTC US

USA Treasury Bonds Yield Curve (%)



Source: Bloomberg

Capital Market Laboratory Coordinator: Economist Bruno Bellido
Collaboration: María Camarena, Alonso García, Adrían Paredes and Jairo Valverde
email: pulsoBursatil@ulima.edu.pe
facebook: www.facebook.com/pulsoBursatil.ul

LIMA

Stocks

Ticker	Currency	Price	1D*	5D*	30D*	YTD*	Frequency	Volume (US\$)	Beta	Dividend Yield (%)	Price Earning	Market Cap. (M US\$)	Economic Sector*	Index Weight
▼ ALICORC1 PE**	S/.	6.05	-0.37%	0.02%	-0.13%	-7.41%	100.00%	287,048	0.99	4.13	11.42	1,343.47	Industrial	3.53%
▼ ATACOBC1 PE**	S/.	0.10	-9.57%	-5.45%	-18.75%	-24.64%	65.00%	9,488	1.20	0.00	-	25.57	Mining	1.02%
▲ BACKUS1 PE**	S/.	19.00	5.50%	6.74%	-7.32%	-5.71%	95.00%	49,489	0.72	1.85	9.17	7,627.71	Industrial	0.82%
▼ BAP PE**	US\$	125.80	-5.94%	-10.97%	-5.56%	-21.67%	100.00%	5,170,741	1.16	0.00	-	11,873.30	Diverse	5.82%
▼ BVN PE**	US\$	10.62	-3.19%	-7.89%	-2.66%	-11.50%	100.00%	429,727	1.09	0.00	-	2,922.22	Mining	5.88%
▼ CASAGRC1 PE**	S/.	3.78	-3.08%	-21.09%	-35.93%	-20.42%	90.00%	60,689	1.23	19.79	2.79	82.86	Agricultural	1.31%
▼ BBVAC1 PE**	S/.	1.89	-3.57%	-6.44%	-10.85%	-12.90%	85.00%	16,999	1.08	2.39	26.99	3,211.15	Finance	2.85%
▲ CORARE1 PE**	S/.	0.95	2.15%	-8.65%	-16.67%	6.74%	100.00%	179,247	1.33	21.41	3.04	380.87	Industrial	1.72%
▲ CPACASC1 PE**	S/.	6.00	6.01%	3.45%	11.11%	13.21%	100.00%	212,114	0.73	3.83	42.86	715.04	Industrial	2.38%
▲ CVERDEC1 PE**	US\$	17.45	0.29%	-10.51%	-27.32%	-16.59%	100.00%	480,591	1.49	3.27	9.99	6,108.59	Mining	5.25%
- ENGEPEC1 PE**	S/.	1.99	0.00%	-3.86%	-10.76%	-0.50%	95.00%	36,923	0.70	0.00	12.16	1,470.01	Public Services	1.44%
- ENDISPC1**	S/.	4.15	0.00%	-10.37%	-18.63%	-23.15%	85.00%	6,058	0.75	4.11	9.34	689.59	Public Services	0.98%
▲ FERREY1 PE**	S/.	1.54	4.05%	-9.41%	-18.52%	-11.49%	100.00%	321,350	1.09	11.83	6.80	390.99	Diverse	4.90%
- AENZAC1 PE**	S/.	1.20	0.00%	-7.69%	-6.25%	-31.03%	100.00%	23,751	0.86	0.00	-	272.27	Diverse	4.05%
▼ IFS PE**	US\$	25.52	-4.71%	-11.33%	-7.33%	-17.52%	95.00%	36,069	1.22	3.02	14.78	2,946.23	Diverse	7.22%
- INRETC1 PE**	US\$	35.30	0.00%	-7.11%	-1.40%	-9.95%	100.00%	123,550	0.83	1.93	74.30	3,629.10	Diverse	5.28%
▼ LUSURC1 PE**	S/.	11.88	-0.17%	3.48%	-8.62%	-53.41%	80.00%	50,742	0.74	7.24	12.87	1,505.37	Public Services	1.81%
▼ MINSUR1 PE**	S/.	2.61	-0.38%	-3.69%	-18.44%	41.08%	95.00%	73,069	0.95	12.80	5.17	1,958.06	Mining	3.09%
▼ PML PE**	US\$	0.10	-4.76%	-16.67%	-28.57%	-5.66%	85.00%	7,550	1.39	0.00	-	26.44	Mining	2.12%
▲ RELAPAC1 PE**	S/.	0.12	1.77%	0.88%	-1.71%	66.67%	100.00%	60,241	1.15	0.00	3.04	248.95	Industrial	2.12%
- SCCO PE**	US\$	68.80	0.00%	-3.75%	-15.85%	4.40%	95.00%	242,255	0.94	0.00	23.91	53,187.44	Mining	2.14%
▲ SIDERC1 PE**	S/.	0.95	2.15%	1.06%	-10.38%	11.76%	100.00%	15,610	0.98	23.63	4.75	219.50	Industrial	1.43%
▲ TV PE**	US\$	0.19	-3.03%	-8.57%	-6.34%	30.61%	100.00%	31,570	1.27	0.00	-	189.91	Mining	2.93%
▼ UNACEMC1 PE**	S/.	1.34	-3.60%	-6.29%	-12.42%	-13.55%	100.00%	205,424	1.17	1.94	10.58	633.97	Industrial	3.00%
▲ VOLCABC1 PE**	S/.	0.63	5.00%	-3.08%	-17.11%	21.15%	100.00%	355,912	1.54	0.00	-	668.31	Mining	5.90%
- NEXAPEC1 PE**	S/.	3.26	0.00%	-1.21%	-5.51%	15.19%	85.00%	60,349	1.15	0.00	25.36	1,121.17	Mining	1.56%

Quantity of shares: 26
 Source: Bloomberg, Económica
 * Bloomberg Industry Classification System
 ** PER is used in the stock market and original currency of the instrument
 *Legend: Variation 1D: 1 Day; 5D: 5 Days, 1M: 1 Month; YTD: Var.% 12/31/20 to date

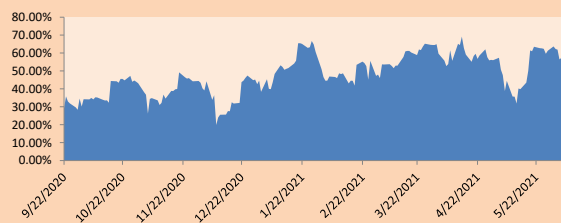
Sectorial Indices

	Close	1D*	5D*	30D*	YTD*	Beta
▼ S&P/BVLMining	423.23	-2.69%	-4.70%	-10.49%	8.53%	0.95
▲ S&P/BVLConsumer	1,015.54	0.65%	-4.74%	-5.42%	-6.71%	0.78
▲ S&P/BVLIndustrials	180.16	1.67%	-4.65%	-6.72%	-5.46%	0.91
▼ S&P/BVLFinancials	870.10	-7.72%	-10.33%	-3.02%	-15.84%	1.11
▲ S&P/BVLConstruction	197.08	0.79%	-2.83%	-1.48%	-5.76%	0.84
▼ S&P/BVLPublicSvcs	526.89	-1.06%	-2.87%	-7.52%	-14.20%	0.45
▼ S&P/BVLElectricUtil	514.38	-1.07%	-2.87%	-7.52%	-14.20%	0.45

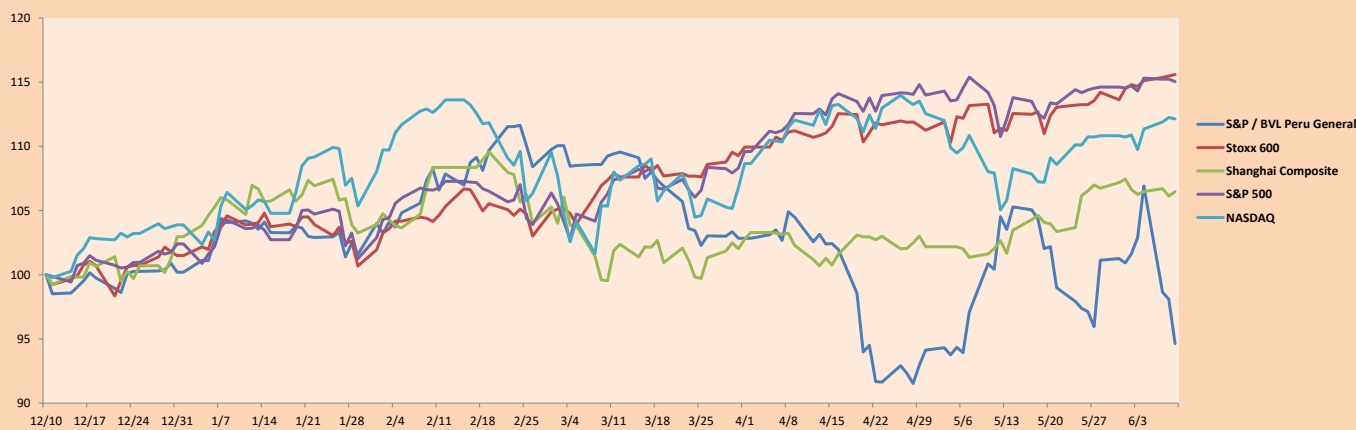
S&P/BVLConstructionTRPEN

*Legend: Variation 1D: 1 Day; 5D: 5 Days, 1M: 1 Month; YTD: Var.% 12/31/20 to date

Correlation Graph of Returns of Mining Index against Metallic Index of London (3 months)



Indices (6 months)



Base: 10/12/20=100
 Source: Bloomberg

Capital Market Laboratory Coordinator: Economist Bruno Bellido
 Collaboration: María Camarena, Alonso García, Adrian Paredes and Jairo Valverde
 email: pulsobursatil@ulima.edu.pe
 facebook: www.facebook.com/pulsobursatil.ul

SOVEREIGN RATING

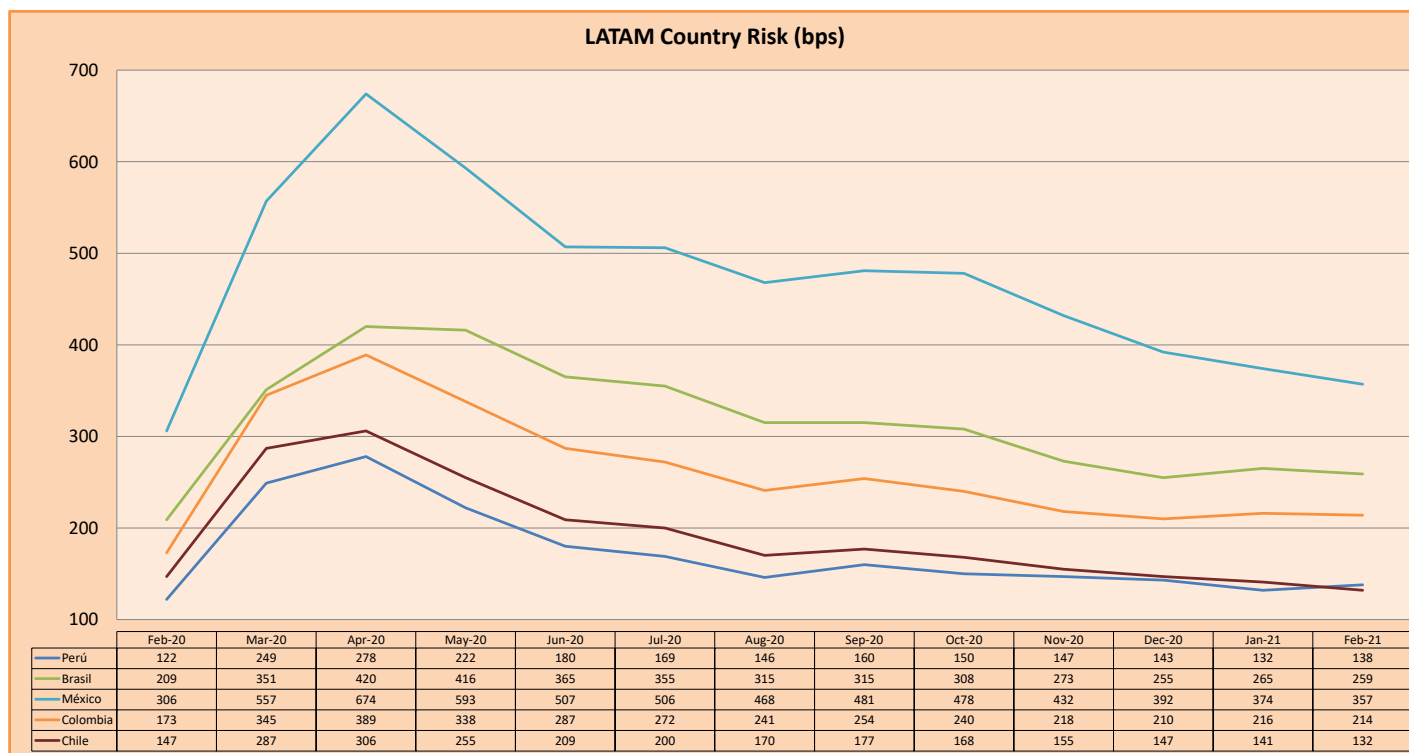
RISK RATINGS

Moody's	S&P	Fitch		
Aaa	AAA	AAA	Prime	
Aa1	AA+	AA+	High credit quality	
Aa2	AA	AA		
Aa3	AA-	AA-		
A1	A+	A+	Medium-high grade, with low credit risk	
A2	A	A		
A3	A-	A-		
Baa1	BBB+	BBB+	Moderate Credit Risk	
Baa2	BBB	BBB		
Baa3	BBB-	BBB-		
Ba1	BB+	BB+	It has speculative elements and it is subject to substantial credit risk	
Ba2	BB	BB		
Ba3	BB-	BB-		
B1	B+	B+	It is considered speculative and it has high credit risk	
B2	B	B		
B3	B-	B-		
Caa1	CCC+	CCC	Bad credit conditions and it is subject to high credit risk	
Caa2	CCC			
Caa3	CCC-			
Ca	C	DDD	Very close to default or in default	
C	D			DD
				D

Source: Bloomberg

Latin America Credit Rating			
Clasificadora de riesgo			
Country	Moody's	Fitch	S&P
Peru	A3	BBB+	BBB+
México	Ba2	BB-	BB-
Venezuela	C	WD	SD
Brazil	Ba2	BB-	BB-
Colombia	Baa2	BBB-	BB+
Chile	A1	A-	A
Argentina	Ca	WD	CCC+
Panama	Baa2	BBB-	BBB

Source: Bloomberg



Source: BCRP

Capital Market Laboratory Coordinator: Economist Bruno Bellido
Collaboration: María Camarena, Alonso García, Nicolás Muñoz, Adrián Paredes y Jairo Valverde
email: pulsobursatil@ulima.edu.pe
facebook: www.facebook.com/pulsobursatil.ul