

PULSO BURSÁTIL

FACULTAD DE CIENCIAS EMPRESARIALES Y ECONÓMICAS
CARRERA DE ECONOMÍA
LABORATORIO DE MERCADO DE CAPITALES

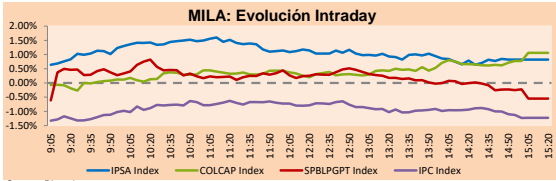


MILA

Lima, June 8, 2021

Main Indexes	Close	1 D	5 D	1 M	YTD	Cap. Burs. (US\$ bill)
▲ IPSA (Chile)	4,172.34	0.99%	-5.09%	-9.67%	-0.12%	118.01
▲ IGPA (Chile)	21,048.78	0.93%	-4.85%	-9.64%	0.20%	141.50
▲ COLCAP (Colombia)	984.24	0.07%	1.28%	1.97%	-7.06%	4.66
▲ COLCAP (Colombia)	1,258.64	1.06%	4.81%	-1.82%	-12.47%	77.46
▼ S&P/BVL (Perú)*	20,385.54	-0.55%	-2.80%	1.03%	-2.10%	97.16
▼ S&P/BVL SEL (Perú)	531.54	-0.74%	-3.63%	-1.08%	-3.60%	87.79
▼ S&P/BVL LIMA 25	25,462.94	-0.11%	-3.93%	-4.28%	1.05%	96.36
▼ IPC (México)	50,865.21	-1.09%	0.28%	3.28%	15.43%	315.94
▲ S&P MILA 40	495.90	0.73%	-1.20%	-6.07%	-7.24%	6,226.71

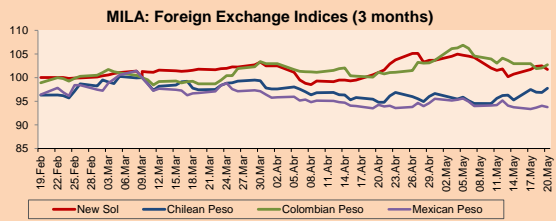
*Legend: Variation 1D: 1 day; 5D: 5 days; 1M: 1 Month; YTD: Var% 12/31/20 to date



Source: Bloomberg

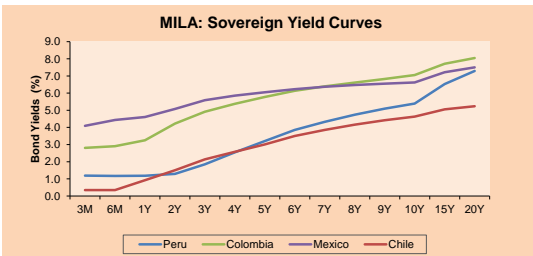
Currency	Price	1D*	5D*	30 D*	YTD*
▼ Sol (PEN)	3,9316	-0.15%	1.79%	3.25%	8.67%
▲ Chilean Peso (CLP)	717.82	0.32%	-0.99%	3.30%	0.85%
▲ Colombian Peso (COP)	3,604.85	0.14%	-1.67%	-4.22%	5.11%
▼ Mexican Peso (MXN)	19.71	-0.49%	-1.31%	-1.05%	-1.03%

*Legend: Variation 1D: 1 day; 5D: 5 days; 1M: 1 Month; YTD: Var% 12/31/20 to date



Base: 09/03/21=100
Source: Bloomberg

Fixed Income	Currency	Price	Bid Yield (%)	Ask Yield (%)	Duration
PERU 7.35 07/21/25	USD	122.595	1.71	1.59	3.58
PERU 4.125 08/25/27	USD	111.139	2.25	2.14	5.52
PERU 8.75 11/21/33	USD	154.996	3.36	3.28	8.73
PERU 6.55 03/14/37	USD	134.989	3.65	3.58	10.32
PERU 5.625 11/18/2050	USD	131.114	3.87	3.83	16.33
CHILE 2.25 10/30/22	USD	102.549	0.58	0.24	1.37
CHILE 3.125 01/21/26	USD	108.462	1.28	1.18	4.31
CHILE 3.625 03/30/42	USD	104.479	3.36	3.30	16.35
COLOM 11.85 03/09/28	USD	159.821	2.41	2.09	5.16
COLOM 10.375 01/28/33	USD	149.519	4.88	4.67	7.62
COLOM 7.375 09/18/37	USD	131.932	4.61	4.54	10.41
COLOM 6.125 01/18/41	USD	118.715	4.69	4.63	12.05
MEX 4 10/02/23	USD	118.715	4.689	4.628	12.05
MEX5.55 01/45	USD	120.296	4.21	4.16	14.05



Source: Bloomberg

Equity

Largest gains	Exchange	Currency	Price	▲%
ENGIE ENERGIA CH	Chile	CLP	584.00	6.10
COLBUN SA	Chile	CLP	107.35	5.04
SOQUIMICH-B	Chile	CLP	33750.00	3.81
GRUPO NUTRESA SA	Colombia	COP	22400.00	3.27
CENCOSUD SHOPPIN	Chile	CLP	1204.00	3.06

Per Turnover	Exchange	Amount (US\$)
WALMART DE MEXIC	Mexico	73,439,006
GRUPO F BANORT-O	Mexico	45,916,498
GRUPO MEXICO-B	Mexico	44,885,324
AMERICA MOVIL-L	Mexico	34,084,359
FOMENTO ECON-UBD	Mexico	26,927,874

Largest losses	Exchange	Currency	Price	▼%
GRUPO F BANORT-O	Mexico	MXN	132.81	-4.45
VOLCAN CIA MIN-B	Peru	PEN	0.6	-3.23
BUENAVENTURA-ADF	Peru	USD	10.97	-3.01
GRUPO TELEV-CPO	Mexico	MXN	57.04	-2.91
CMPC	Chile	CLP	1621.3	-2.33

Per Volume	Exchange	Volume
BANCO SANTANDER	Chile	133,110,569
ITAU CORPBANCA	Chile	77,608,500
ENEL AMERICAS SA	Chile	56,930,274
ENEL CHILE SA	Chile	46,612,933
AMERICA MOVIL-L	Mexico	42,905,476

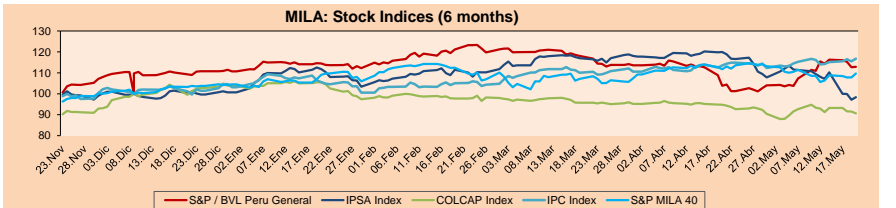
MILA

Peru: The General Index of the BVL ended today's session with a negative result of -0.55%. The index maintains an annual accumulated negative trend of -2.10% in local currency, while the adjusted return in dollars amounts to -9.91%. Then, the S&P / BVL Peru SEL varied by -0.74% while the S&P / BVL LIMA 25 by -0.11%. The PEN spot reached 3.9316. Headline: Pedro Castillo affirms that with a report of the vote count of his representatives, his victory would already be official

Chile: The IPSA index ended the day with a positive return of +0.99%. The sectors that benefited the most from the conference were Materials (+1.97%) and Public Services (+1.61%). The best performing stocks were Engie Energia Chile SA (+6.10%) and Colbun SA (+5.04%). Headline: Economic outlook improves in May, but recovery vision in the shape of a "K" is consolidated

Colombia: The COLCAP index closed today with a positive return of +0.40%. The sectors that benefited the most from the session were Energy (+1.55%) and Finance (+0.36%). The stocks with the best performance were Grupo Nutresa (+3.55%) and Interconectado Eléctrica SA (+2.60%). Headline: Colombia would grow 5.9% this 2021, predicts the World Bank

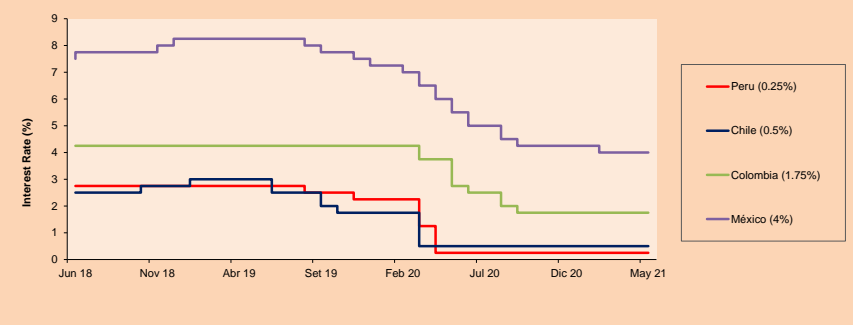
Mexico: The IPC index closed the day with a negative return of -1.09%. The most affected sectors of the day were Finance (-2.61%) and Communication Services (-2.32%). The worst performing stocks were Grupo Financiero Banorte (-4.45%) and Grupo Televisa SAB-SER CPO (-2.91%) Headline: The electoral result is certain



Base: 23/11/20=100
Source: Bloomberg

ETFs	Curr.	Close	1D	5D	30 D	YTD	Exchange
▼ iShares MSCI All Peru Caped Index Fund	USD	31.62	-0.50%	-4.41%	-4.38%	-8.82%	NYSE Arca
▲ iShares MSCI All Chile Caped Index Fund	USD	29.08	0.24%	-3.13%	-12.62%	-3.74%	Cboe BZX
▲ Global X MSCI Colombia	USD	10.415	0.34%	3.32%	5.75%	-8.32%	NYSE Arca
▲ iShares MSCI Mexico Capped	USD	49.71	-0.46%	2.14%	5.65%	15.63%	NYSE Arca
▼ iShares MSCI Emerging Markets	USD	55.44	-0.48%	-1.00%	1.37%	7.30%	NYSE Arca
▼ Vanguard FTSE Emerging Markets	USD	54.56	-0.42%	-0.82%	1.98%	8.88%	NYSE Arca
▼ iShares Core MSCI Emerging Markets	USD	67.4	-0.50%	-0.88%	1.54%	8.64%	NYSE Arca
▼ iShares JP Morgan Emerging Markets Bonds	USD	65.02	-0.14%	-0.94%	1.53%	6.45%	Cboe BZX
▲ Morgan Stanley Emerging Markets Domestic	USD	6.28	0.32%	-0.63%	2.28%	-0.16%	New York

MILA: Policy Rate



Source: Bloomberg

Capital Market Laboratory Coordinator: Economist Bruno Bellido
Collaboration: María Camarena, Alonso García, Adrian Paredes and Jairo Valverde
email: pulsobursatil@ulima.edu.pe
facebook: www.facebook.com/pulsobursatil

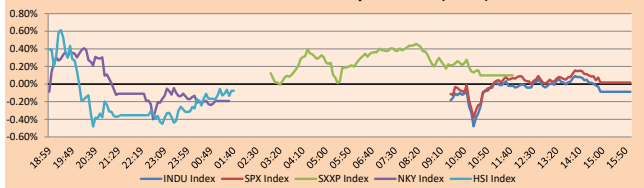
The content of this document is just for informational purposes. The information and opinions expressed should not be considered as recommendations for future decisions. Under any circumstances, the Capital Market Laboratory of University of Lima will be responsible for the use of the statements in this document.

WORLD

Main Indices	Close	1 D*	5 D*	1 M*	YTD*	Market Cap. (US\$ Mill.)
▼ Dow Jones (USA)	34,599.82	-0.09%	0.07%	-0.51%	13.05%	10,211,145
▲ Standard & Poor's 500 (EEUU)	4,227.26	-0.02%	0.60%	-0.13%	12.54%	37,339,023
▲ NASDAQ Composite (USA)	13,924.91	0.31%	1.37%	1.26%	8.04%	23,232,738
▲ Stoxx EUROPE 600 (Europe)	454.01	0.10%	0.87%	2.04%	13.78%	10,272,131
▼ DAX (Germany)	15,640.60	-0.23%	0.47%	1.56%	14.01%	1,153,298
▼ FTSE 100 (United Kingdom)	7,995.09	0.25%	0.21%	-0.49%	9.82%	1,447,856
▲ CAC 40 (France)	6,551.01	0.11%	0.95%	2.59%	18.01%	1,779,437
▼ IBEX 35 (Spain)	9,153.60	-0.11%	-0.39%	1.04%	13.38%	504,872
▼ MSCI AC Asia Pacific Index	209.91	-0.15%	-0.21%	1.15%	5.00%	27,249,052
▼ HANG SENG (Hong Kong)	28,781.38	-0.02%	-2.33%	0.41%	5.49%	4,496,787
▼ SHANGHAI SE Comp. (China)	3,580.11	-0.54%	-1.23%	4.82%	3.18%	6,949,426
▼ NIKKEI 225 (Japan)	28,963.56	-0.19%	0.52%	-1.63%	5.22%	4,016,000
▼ S&P / ASX 200 (Australia)	7,292.59	0.15%	2.10%	2.91%	10.62%	1,791,079
▼ KOSPI (South Korea)	3,247.83	-1.09%	0.28%	1.37%	12.79%	1,958,201

*Legend: Variation 1D: 1 Day; 5D: 5 Days; 1M: 1 Month; YTD: Var.% 12/31/20 to date

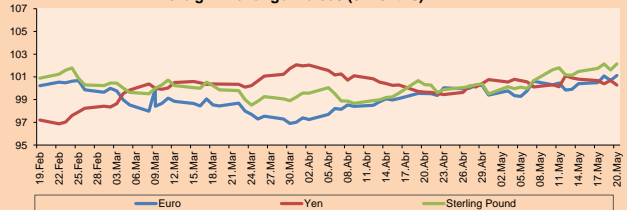
Global Markets: Intraday Evolution (var %)



Currency	Price	1 D*	5 D*	1 M*	YTD*
▼ Euro	1,217.73	-0.14%	-0.33%	0.06%	-0.35%
▲ Yen	109,500.00	0.23%	0.02%	0.33%	6.05%
▼ Sterling Pound	1,415.77	-0.18%	0.03%	1.24%	3.56%
▲ Yuan	6,400.55	0.05%	0.30%	-0.51%	-1.94%
▲ Hong Kong Dollar	7,760.11	0.01%	0.01%	-0.07%	0.09%
▼ Brazilian Real	5,034.2	-0.23%	-2.28%	-3.89%	-3.16%
▼ Argentine Peso	95,014.2	0.04%	0.30%	1.26%	12.92%

*Legend: Variation 1D: 1 Day; 5D: 5 Days; 1M: 1 Month; YTD: Var.% 12/31/20 to date

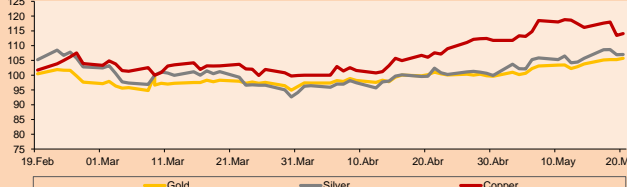
Foreign Exchange Indices (3 months)



Commodities	Close	1 D*	5 D*	1 M*	YTD*
▼ Oro (US\$ Oz. T) (LME)	1,892.89	-0.33%	-0.40%	3.37%	-0.29%
▼ Plata (US\$ Oz. T) (LME)	27.62	-0.97%	-0.98%	0.61%	4.60%
▲ Cobre (US\$ TM) (LME)	9,937.50	0.57%	-2.90%	-4.63%	28.24%
▲ Zinc (US\$ TM) (LME)	2,995.75	0.61%	-1.62%	-0.20%	9.76%
▲ Petróleo WTI (US\$ Barril) (NYM)	70.05	1.18%	3.44%	7.97%	44.37%
▲ Estanio (US\$ TM) (LME)	32,908.00	3.52%	0.26%	0.61%	60.18%
▲ Plomo (US\$ TM) (LME)	2,171.00	1.24%	-2.20%	-2.22%	9.88%
▲ Azúcar #11 (US\$ Libra) (NYB-ICE)	17.71	1.93%	0.11%	1.20%	24.81%
▲ Gasca (US\$ TM) (NYB-ICE)	2,418.00	0.58%	-1.99%	-2.89%	-3.51%
▼ Café Arábica (US\$ TM) (NYB-ICE)	159.85	-1.45%	-1.96%	3.26%	19.92%

*Legend: Variación 1D: 1 Día; 5D: 5 Días; 1M: 1 Mes; YTD: Var.% 31/12/20 a la fecha

Principal Metals Index (3 months)



Equity

Germany (Stocks from DAX Index)				
Largest gains	Curr.	Price	▲%	Exchange
DHER GY	EUR	112.25	1.26	Xetra
VNA GY	EUR	53.68	1.21	Xetra
RWE GY	EUR	31.13	1.14	Xetra
EOAN GY	EUR	10.078	0.79	Xetra

Europe (Stocks from STOXX EUROPE 600)				
Largest gains	Curr.	Price	▲%	Exchange
ICP LN	Gbp	2283	5.89	Londres
NEL NO	NOK	17.32	5.67	Oslo
FLTR ID	EUR	159.9	4.17	EN Dublin
IHG LN	GBP	5166	3.86	Londres

Largest losses				
	Curr.	Price	▼%	Exchange
VOW3 GY	EUR	233.55	-2.20	Xetra
DAI GY	EUR	78.99	-1.44	Xetra
MTX GY	EUR	208	-1.23	Xetra
HEN3 GY	EUR	93.82	-1.10	Xetra

Largest losses				
	Curr.	Price	▼%	Exchange
BIRG ID	EUR	5.14	-3.93	EN Dublin
PAH3 GY	EUR	97.36	-3.79	Xetra
EKTB SS	SEK	124	-3.28	Stockholm
IWG LN	GBP	318.3	-3.22	Londres

Global Overview:

United States:

Major U.S. indices ended today's session with mixed results as a lack of clear catalysts in the market kept investors contained. In macro data, signs of labor shortages surfaced again. The Bureau of Labor Statistics reported that job openings soared to over 9 million in April. In addition, a new sentiment survey showed that 48% of small businesses reported that they had unfilled job openings last month. Separately, Joe Biden broke off talks on the infrastructure bill and reached out to a bipartisan Senate group after describing talks with Shelley Capito as a "brick wall." In equities, Amazon +2.07% and Apple +0.67% provided a big boost in the day's NASDAQ result. On the other hand, thanks to the recent social media buzz, stocks like GameStop +7.14%, Bed Bath & Beyond +8.39% and Workhorse +11.76% benefited from explosive growth in their trading volumes. Thus, DOW JONES -0.09% closed negative, while NASDAQ +0.31% and S&P 500 +0.02% ended with positive returns.

Europe:

European markets ended with mixed results, driven by growth in travel and real estate stocks, but weak German industrial production data and doubts about the lifting of restrictions in Britain later this month weighed on earnings. Thus, the pan-European STOXX600 index closed slightly higher, with Real Estate + 1.21% and Utilities + 0.41% leading the gains. Germany's DAX fell after the unexpected drop in industrial production data, this being another sign that the semiconductor shortage is hurting the European recovery. On the other hand, Britain's index rose, driven by a stronger British pound, although it was mitigated by concerns about the increase in COVID-19 cases. Finally, investors are still waiting for the decision of the European Central Bank to change its policies, the purchase of emergency bonds is expected due to the problems that the euro zone is currently presenting. Thus, the STOXX 600 + 0.1%, CAC 40 + 0.11%, FTSE 100 + 0.25%, DAX -0.23% closed with mixed returns.

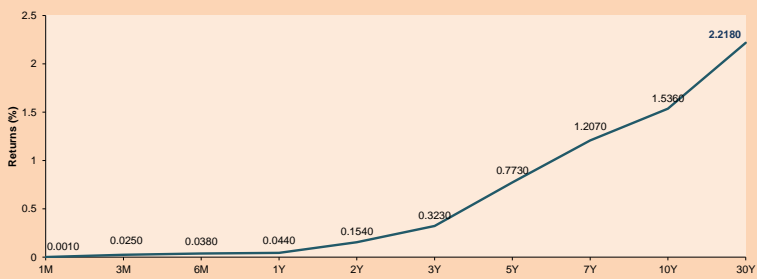
Asia:

Asian mainland indices ended the day mostly lower amid uncertainty over rising tensions between China and the United States. U.S. Secretary of State Antony Blinken yesterday signaled a possible resumption of trade and investment talks, but gave no indication of any willingness to pursue a full-scale trade pact. Thus, China's indices ended with slight losses concentrated in the energy sector. In South Korea, the technology sector led the losses while expectations about US inflation data remain unchanged. On the other hand, the main Australian index closed at record highs supported by technology and healthcare stocks. In individual stocks SkyCity Entertainment lost -5.7% to close at its lowest level in 2 months following reports that Australia's financial crime regulator would investigate the company's operations. Thus, NIKKEI -0.19%; HANG SENG -0.02%; CSI 300 -0.86%; SHANGHAI COMPOSITE -0.54%; KOSPI -0.46%; S&P/ASX 200 +0.15% closed mostly with losses.

ETFs

	Curr.	Close	1D	5D	30 D	YTD	Exchange
SPDR S&P 500 ETF TRUST	USD	422.28	0.02%	0.62%	0.04%	12.95%	NYSE Arca
ISHARES MSCI EMERGING MARKET	USD	55.44	-0.48%	-1.00%	1.37%	7.30%	NYSE Arca
ISHARES IBOX HIGH YLD CORP	USD	87.36	0.07%	0.24%	0.03%	0.07%	NYSE Arca
FINANCIAL SELECT SECTOR SPDR	USD	38.12	-0.26%	-0.26%	0.90%	29.31%	NYSE Arca
VANECK GOLD MINERS	USD	38.10	-1.42%	-3.52%	1.82%	5.77%	NYSE Arca
ISHARES RUSSELL 2000 ETF	USD	232.89	1.05%	2.12%	3.33%	18.79%	NYSE Arca
SPDR GOLD SHARES	USD	177.32	-0.31%	-0.33%	3.34%	-0.58%	NYSE Arca
ISHARES 20+ YEAR TREASURY BO	USD	140.45	0.70%	1.62%	0.88%	-10.96%	NASDAQ GM
INVESCO QQQ TRUST SERIES 1	USD	336.76	0.05%	1.18%	0.77%	7.34%	NASDAQ GM
ISHARES NASDAQ BIOTECHNOLOGY	USD	158.08	-0.13%	4.76%	5.59%	4.35%	NASDAQ GM
ENERGY SELECT SECTOR SPDR	USD	55.99	0.86%	3.26%	4.40%	47.73%	NYSE Arca
PROSHARES ULTRA VIX ST FUTUR	USD	33.68	1.84%	-9.49%	-17.04%	-63.36%	Close BZX
UNITED STATES OIL FUND LP	USD	47.88	1.29%	3.35%	4.77%	46.05%	NYSE Arca
ISHARES MSCI BRAZIL ETF	USD	41.64	-0.50%	3.25%	9.55%	12.33%	NYSE Arca
SPDR S&P OIL & GAS EXP & PR	USD	98.30	0.98%	3.66%	13.44%	68.03%	NYSE Arca
UTILITIES SELECT SECTOR SPDR	USD	64.95	-0.85%	0.29%	-1.65%	3.59%	NYSE Arca
ISHARES US REAL ESTATE ETF	USD	104.48	0.65%	2.66%	5.97%	21.98%	NYSE Arca
SPDR S&P BIOTECH ETF	USD	133.46	0.64%	5.54%	4.48%	-5.20%	NYSE Arca
ISHARES IBOX INVESTMENT GRA	USD	132.48	0.38%	0.77%	0.55%	-4.09%	NYSE Arca
ISHARES JP MORGAN USD EMERGI	USD	112.20	0.39%	0.49%	0.54%	-3.20%	NASDAQ GM
REAL ESTATE SELECT SECT SPDR	USD	45.22	0.53%	2.77%	6.73%	23.69%	NYSE Arca
ISHARES CHINA LARGE-CAP ETF	USD	46.08	-0.48%	-2.89%	0.07%	-0.75%	NYSE Arca
CONSUMER STAPLES SPDR	USD	70.80	-0.84%	0.33%	0.23%	4.97%	NYSE Arca
VANECK JR GOLD MINERS	USD	52.81	-1.49%	-3.79%	2.60%	-2.64%	NYSE Arca
SPDR BARC HIGH YIELD BND	USD	108.15	0.07%	0.31%	0.12%	0.19%	NYSE Arca
VANGUARD REAL ESTATE ETF	USD	104.61	0.83%	2.88%	6.27%	23.17%	NYSE Arca
GRAYSCALE BITCOIN TRUST BTC	USD	27.45	-7.16%	-7.08%	-41.45%	-14.22%	OTC US

USA Treasury Bonds Yield Curve (%)



Source: Bloomberg

Capital Market Laboratory Coordinator: Economist Bruno Bellido
Collaboration: Maria Camarena, Alonso García, Adrian Paredes and Jairo Valverde
email: pulsobursatil@ulima.edu.pe
facebook: www.facebook.com/pulsobursatil.u

LIMA

Stocks

Ticker	Currency	Price	1D*	5D*	30D*	YTD*	Frequency	Volume (US\$)	Beta	Dividend Yield (%)	Price Earning	Market Cap. (M US\$)	Economic Sector*	Index Weight
▲ ALICORC1 PE**	S/.	5.88	0.07%	1.28%	1.97%	-7.06%	100.00%	1,435,463	1.04	4.25	11.09	1,276.53	Industrial	3.53%
▲ ATACOCB1 PE**	S/.	0.12	4.55%	4.55%	-8.73%	-16.67%	70.00%	18,497	1.20	0.00	-	27.64	Mining	1.02%
- BACKUSH1 PE**	S/.	18.01	0.00%	0.06%	-9.95%	-10.62%	100.00%	50,293	0.72	0.00	8.69	7,312.22	Industrial	0.82%
▼ BAP PE**	US\$	133.75	-0.19%	-3.22%	10.17%	-16.72%	100.00%	13,490,730	1.15	0.00	-	12,623.63	Diverse	5.82%
▼ BVN PE**	US\$	10.97	-3.01%	-3.60%	6.40%	-8.58%	100.00%	113,422	1.11	0.00	-	3,018.52	Mining	5.88%
▼ CASAGRC1 PE**	S/.	3.90	-6.92%	-11.76%	-33.33%	-17.89%	90.00%	43,965	1.24	19.18	2.88	83.56	Agricultural	1.31%
▲ BBVAC1 PE**	S/.	1.96	5.95%	-2.97%	-4.39%	-9.68%	85.00%	127,727	1.08	2.30	27.99	3,254.95	Finance	2.85%
- CORAREH1 PE**	S/.	0.93	0.00%	-9.71%	-17.70%	4.49%	100.00%	126,597	1.39	21.87	2.98	371.35	Industrial	1.72%
▲ CPACASC1 PE**	S/.	5.66	0.53%	-1.57%	3.10%	6.79%	100.00%	405,947	0.79	4.06	40.43	662.25	Industrial	2.38%
▼ CVERDEC1 PE**	US\$	17.40	-4.55%	-10.77%	-26.27%	-16.83%	100.00%	949,844	1.55	3.28	9.96	6,090.97	Mining	5.25%
▼ ENGEPEC1 PE**	S/.	1.99	-2.93%	-2.93%	-10.36%	-0.50%	95.00%	36,090	0.70	9.92	12.16	1,436.85	Public Services	1.44%
▼ ENDISPC1**	S/.	4.15	-1.19%	-13.00%	-17.00%	-23.15%	75.00%	41,610	0.75	4.11	9.34	674.04	Public Services	0.98%
▼ FERREYC1 PE**	S/.	1.48	-1.33%	-10.84%	-22.51%	-14.94%	100.00%	348,009	1.15	12.30	6.54	367.28	Diverse	4.90%
▲ AENZAC1 PE**	S/.	1.20	-4.00%	1.69%	-2.44%	-31.03%	100.00%	121,801	0.89	0.00	-	266.13	Diverse	4.05%
▲ IFS PE**	US\$	26.78	-1.78%	-2.08%	7.21%	-13.45%	95.00%	227,015	1.22	2.88	15.86	3,091.69	Diverse	7.22%
▲ INRETC1 PE**	US\$	35.30	1.18%	-7.11%	0.57%	-9.95%	100.00%	500,928	0.85	1.93	75.99	3,629.10	Diverse	5.28%
▼ LUSURC1 PE**	S/.	11.90	-0.75%	3.48%	-3.25%	-53.33%	70.00%	3,632	0.77	7.23	12.89	1,473.88	Public Services	1.81%
▲ MINSURI1 PE**	S/.	2.62	0.77%	-14.10%	-12.96%	41.62%	100.00%	258,112	0.95	12.75	5.07	1,921.22	Mining	3.09%
▲ PML PE**	US\$	0.11	0.96%	-17.32%	-21.64%	-0.94%	75.00%	33,056	1.39	0.00	-	27.76	Mining	2.12%
▲ RELAPAC1 PE**	S/.	0.11	4.63%	1.80%	-1.74%	63.77%	95.00%	18,082	1.20	0.00	2.92	239.11	Industrial	2.12%
▲ SCCO PE**	US\$	68.80	0.88%	-3.87%	-10.61%	4.40%	100.00%	242,255	0.94	3.20	23.91	53,187.44	Mining	2.14%
▲ SIDERC1 PE**	S/.	0.93	5.68%	-1.06%	-8.82%	9.41%	100.00%	32,972	0.98	24.14	4.65	210.03	Industrial	1.43%
▲ TV PE**	US\$	0.20	2.06%	-7.04%	-6.60%	34.69%	100.00%	43,586	1.27	0.00	-	195.84	Mining	2.93%
▲ UNACEMC1 PE**	S/.	1.39	6.11%	-1.42%	-7.33%	-10.32%	95.00%	221,712	1.17	1.87	10.98	642.79	Industrial	3.00%
▼ VOLGABC1 PE**	S/.	0.60	-3.23%	-6.25%	-15.49%	15.38%	100.00%	587,331	1.63	0.00	-	622.12	Mining	5.90%
▲ NEXAPEC1 PE**	S/.	3.26	5.16%	-1.21%	-6.86%	15.19%	65.00%	58,987	1.15	0.00	24.79	1,095.87	Mining	1.56%

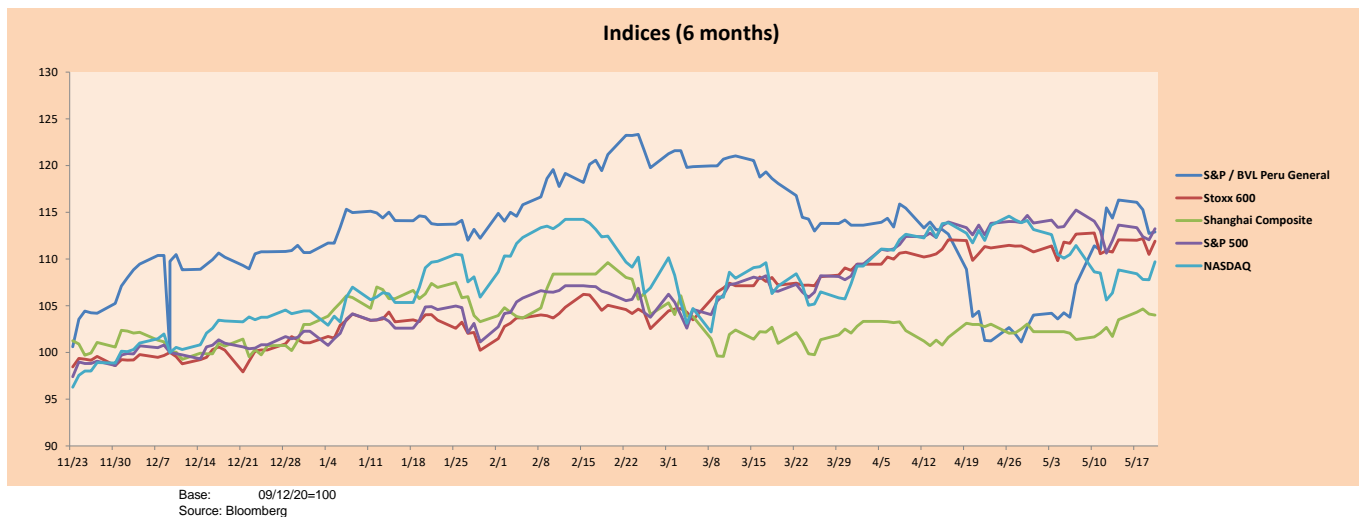
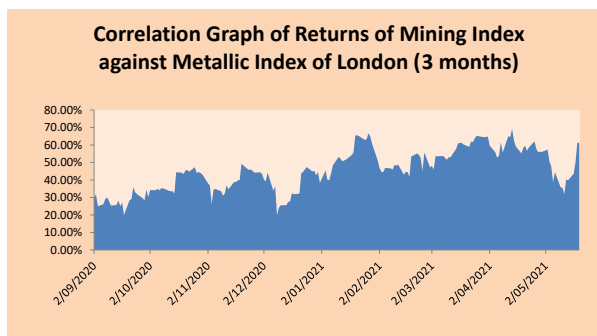
Quantity of shares: 26
 Source: Bloomberg, Económática
 * Bloomberg Industry Classification System
 ** PER is used in the stock market and original currency of the instrument
 *Legend: Variation 1D: 1 Day; 5D: 5 Days, 1M: 1 Month; YTD: Var.% 12/31/20 to date

Sectorial Indices

	Close	1D*	5D*	30D*	YTD*	Beta
▼ S&P/BVLMining	434.95	-0.55%	-2.57%	-4.25%	11.54%	1.14
▲ S&P/BVLCConsumer	1,009.00	0.93%	-5.45%	-4.51%	-7.31%	0.59
▲ S&P/BVLIndustrials	177.20	0.65%	-3.78%	-7.84%	-7.01%	0.62
▼ S&P/BVLFinancials	942.94	-0.32%	-1.30%	12.52%	-8.80%	1.22
▲ S&P/BVLConstruction	195.53	1.32%	-1.03%	-1.17%	-6.50%	0.63
▲ S&P/BVLPublicSvcs	532.56	-1.16%	-3.36%	-6.05%	-13.28%	0.43
▼ S&P/BVLElectricUtil	519.92	-1.16%	-3.36%	-6.04%	-13.28%	0.43

S&P/BVLConstructionTRPEN

*Legend: Variation 1D: 1 Day; 5D: 5 Days, 1M: 1 Month; YTD: Var.% 12/31/20 to date



Base: 09/12/20=100
 Source: Bloomberg

Capital Market Laboratory Coordinator: Economist Bruno Bellido
 Collaboration: María Camarena, Alonso García, Adrían Paredes and Jairo Valverde
 email: pulsobursatil@ulima.edu.pe
 facebook: www.facebook.com/pulsobursatil

The content of this document is just for informational purposes. The information and opinions expressed should not be considered as recommendations for future decisions. Under any circumstances, the Capital Market Laboratory of University of Lima will be responsible for the use of the statements in this document.

SOVEREIGN RATING

RISK RATINGS

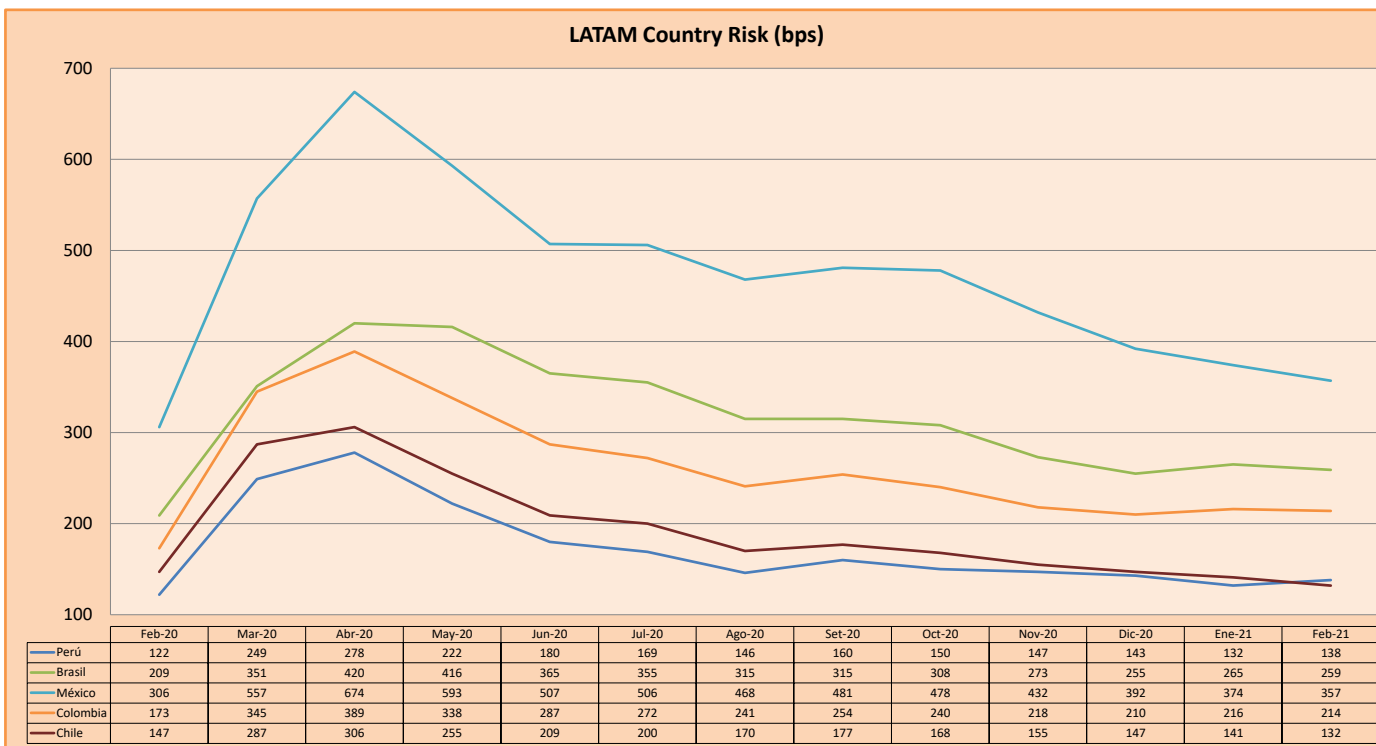
Moody's	S&P	Fitch		
Aaa	AAA	AAA	Prime	
Aa1	AA+	AA+	High credit quality	
Aa2	AA	AA		
Aa3	AA-	AA-		
A1	A+	A+	Medium-high grade, with low credit risk	
A2	A	A		
A3	A-	A-		
Baa1	BBB+	BBB+	Moderate Credit Risk	
Baa2	BBB	BBB		
Baa3	BBB-	BBB-		
Ba1	BB+	BB+	It has speculative elements and it is subject to substantial credit risk	
Ba2	BB	BB		
Ba3	BB-	BB-		
B1	B+	B+	It is considered speculative and it has high credit risk	
B2	B	B		
B3	B-	B-		
Caa1	CCC+	CCC	Bad credit conditions and it is subject to high credit risk	
Caa2	CCC			
Caa3	CCC-			
Ca	C	DDD	Very close to default or in default	
C	D			DD
				D

Source: Bloomberg

Latin America Credit Rating			
Clasificadora de riesgo			
Country	Moody's	Fitch	S&P
Peru	A3	BBB+	BBB+
México	Ba2	BB-	BB-
Venezuela	C	WD	SD
Brazil	Ba2	BB-	BB-
Colombia	Baa2	BBB-	BB+
Chile	A1	A-	A
Argentine	Ca	WD	CCC+
Panama	Baa2	BBB-	BBB

Source: Bloomberg

LATAM Country Risk (bps)



Source: BCRP

Capital Market Laboratory Coordinator: Economist Bruno Bellido
Collaboration: María Camarena, Alonso García, Nicolás Muñoz, Adrián Paredes y Jairo Valverde
email: pulsobursatil@ulima.edu.pe
facebook: www.facebook.com/pulsobursatil.ul