

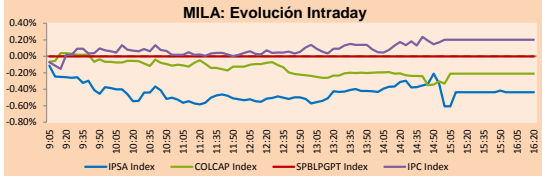
# PULSO BURSÁTIL

Lima, August 3, 2017

## MILA

Main Indices	Close	1 D	5 D	1 M	YTD	Market Cap. (US\$ bill)
▼ IPSA (Chile)	5,074.86	-0.44%	0.50%	6.08%	22.24%	191.36
▼ IGPA (Chile)	25,334.39	-0.45%	0.40%	5.75%	22.19%	219.94
▼ IGBC (Colombia)	10,935.76	-0.23%	-0.26%	0.41%	8.21%	93.89
▼ COLCAP (Colombia)	1,477.95	-0.21%	-0.12%	1.03%	9.34%	86.43
▲ S&P/BVL (Perú)*	16,850.50	0.19%	-0.03%	4.10%	8.25%	89.18
▲ S&P/BVL SEL (Perú)	311.93	0.14%	0.32%	4.36%	4.53%	67.76
▼ S&P/BVL LIMA 25	24,839.99	-0.05%	-0.09%	3.41%	5.35%	83.98
▲ IPC (México)	51,293.07	0.18%	0.07%	2.36%	12.38%	N.D.
▲ S&P MILA 40	651.85	0.12%	0.40%	6.57%	17.30%	272.54

\* Market Cap. Of the last price Legend: Variation 1D: 1 day; 5D: 5 days; 1M: 1 Month; YTD: Var%12/31/16 to date

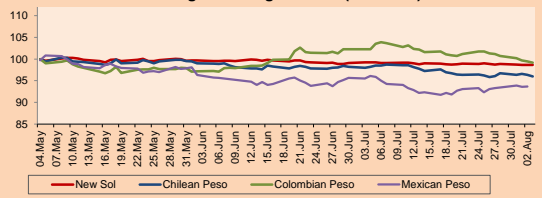


Source: Bloomberg

Currency	Price	1D*	5D*	30 D*	YTD*
▲ New Sol (PEN)	3,238.5	0.03%	0.10%	-0.58%	-3.50%
▲ Chilean Peso (CLP)	649.09	-0.00343912	-0.04%	-2.19%	-3.18%
▼ Colombian Peso (COP)	2,953.70	-0.32%	-1.97%	-3.03%	-1.61%
▲ Mexican Peso (MXN)	17.84	0.11%	0.66%	-1.96%	-13.92%

\*Legend: Variation 1D: 1 day; 5D: 5 days; 1M: 1 Month; YTD: Var%12/31/16 to date

### MILA: Foreign Exchange Indices (3 months)

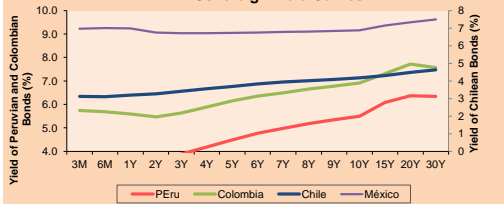


Base: 04/05/17=100 Source: Bloomberg

### Fixed Income

Instrument	Currency	Price	Bid Yield (%)	Ask Yield (%)	Duration
PERU 4.125 08/25/2027	USD	110.182	2.97	2.92	8.26
PERU 7.125 03/30/19	USD	109.478	1.36	1.21	1.54
PERU 7.35 07/21/25	USD	131.85	2.87	2.82	6.37
PERU 8.75 11/21/33	USD	156.31	4.03	3.98	10.21
PERU 6.50 03/14/37	USD	134.13	4.04	4.00	11.76
PERU 5.625 11/18/2050	USD	125.13	4.23	4.20	16.89
CHILE 2.25 10/30/22	USD	99.107	2.47	2.39	4.90
CHILE 3.875 08/05/20	USD	105.338	2.08	1.98	2.84
CHILE 3.625 10/30/2042	USD	99.71	3.66	3.63	16.62
COLOM 11.75 02/25/20	USD	123.662	2.23	2.07	2.19
COLOM 11.85 03/09/28	USD	171.296	3.70	3.62	7.06
COLOM 10.375 01/28/33	USD	153.75	5.33	5.19	9.28
COLOM 7.375 09/18/37	USD	130.32	5.00	4.95	11.51
COLOM 6.125 01/18/41	USD	116.52	4.94	4.91	13.32
MEX 4 10/02/23	USD	105.52	3.04	2.98	5.42
MEX5.55 01/45	USD	114.473	4.625	4.605	15.11

### MILA: Sovereign Yield Curves



Source: Bloomberg

Equity	Exchange	Amt.	Price	▲%
<b>Largest gains</b>				
SCHWAGER	Santia.	CLP	0.87	4.58
PML	Lima	USD	0.13	4.00
ORO BLANCO	Santia.	CLP	5.71	3.48
MOROOCO1	Lima	PEN	2.25	3.21
<b>Per Turnover</b>				
SQM-B	Santia.	18,293,534		
VAPORES	Santia.	10,468,015		
CENCOSUD	Santia.	8,898,227		
BSANTANDER	Santia.	8,426,884		
COPEC	Santia.	5,393,195		

Largest losses	Exchange	Amt.	Price	▼%
BROCALI1	Lima	PEN	5.00	-17.22
MULTIFOODS	Santia.	CLP	196.00	-6.64
QUINENCO	Santia.	CLP	1758.20	-4.96
LAS CONDES	Santia.	CLP	31553.00	-4.94
<b>Per Volume</b>				
ORO BLANCO	Santia.	388,366,686		
VAPORES	Santia.	218,097,839		
NORTEGRAN	Santia.	122,776,849		
BSANTANDER	Santia.	115,433,217		
CHILE	Santia.	30,658,980		

### MILA

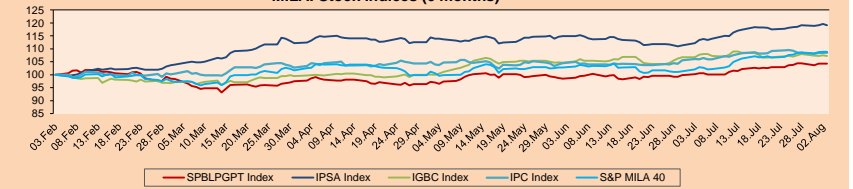
**Peru:** The General Index of the Peruvian BVL ended the session today with a positive result of +0.19%. The index maintains an accumulated annual positive trend of +8.44% in local currency, while the adjusted performance in foreign currency is +12.45%. Then, the S&P/BVL Peru SEL obtained a positive performance of +0.14%, while the S&P/BVL LIMA 25 decreased -0.05%. The spot PEN reached S/ 3.2385.

**Chile:** The IPSA index ended the day with a negative return of -0.44%. The index sectors with the lowest results were Energy (-1.52%) and Information Technology (-1.03%). On the other hand, the values with the most negative results were Quinenco SA (-4.96%) and AES Gener SA (-2.55%).

**Colombia:** The COLCAP index closed the day with a negative yield of -0.21%. The index sectors with the downward results were Public Services (-0.46%) and Finance (-0.43%). Finally, the shares with the lowest yields were BanColombia SA (-0.91%) and Suramer Investment Group (-0.91%).

**Mexico:** The Mexican IPC index closed today with a positive result of +0.18%. The index sectors that generated the highest returns were Finance (+1.38%) and Industrial (+0.78%). Finally, the shares with the highest yields were Grupo Elektra SAB de CV (+4.09%) and OHL Mexico SAB de CV (+3.67%).

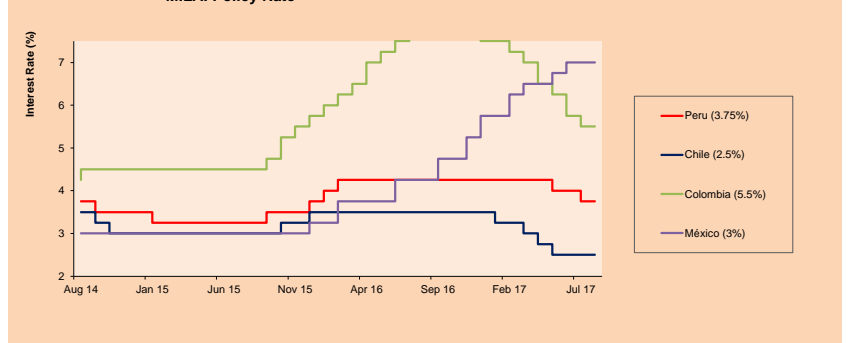
### MILA: Stock Indices (6 months)



Base: 06/02/17=100 Source: Bloomberg

ETFs	Curr.	Close	1D	5D	30 D	YTD	Exchange
▲ iShares MSCI All Peru Capped Index Fund	USD	35.95	0.48%	0.87%	5.89%	9.60%	NYSE Arca
▲ iShares MSCI Chile Capped	USD	45.57	0.15%	0.13%	8.81%	21.78%	BATS
- Global X MSCI Colombia	USD	14.58	0.00%	2.32%	4.07%	12.67%	NYSE Arca
▼ iShares MSCI Mexico Capped	USD	56.37	-0.04%	-0.46%	4.58%	28.20%	NYSE Arca
▼ iShares MSCI Emerging Markets	USD	43.79	-0.41%	0.05%	5.19%	25.08%	NYSE Arca
▼ Vanguard FTSE Emerging Markets	USD	43.13	-0.37%	0.82%	5.14%	20.54%	NYSE Arca
▼ iShares Core MSCI Emerging Markets	USD	52.79	-0.51%	0.08%	5.03%	24.36%	NYSE Arca
▲ iShares JP Morgan Emerging Markets Bonds	USD	57.47	0.07%	0.28%	3.42%	17.50%	BATS
▲ Morgan Stanley Emerging Markets Domestic	USD	8.29	0.61%	0.36%	4.67%	15.62%	New York

### MILA: Policy Rate



source: Bloomberg

Capital Market Laboratory Coordinator: Economist Bruno Bellido Anicama  
Support: Sebastián Butters, Ernesto Cossio, Kaori Olulou, Jairo Trujillo  
e-mail: pulsobursatil@ulima.edu.pe  
facebook: www.facebook.com/pulsobursatil.ul  
Phone number : 4376767 Anexes: 35340 - 35310





# PULSO BURSÁTIL

## LIMA

### Stocks

Ticker	Currency	Price	1D*	5D*	30D*	YTD*	Frequency	Volume (US\$)	Beta	Dividend Yield (%)	Price Earning	Market Cap. (M US\$)	Economic Sector*	Index Weight
▲ ALICORC1 PE**	S/.	8.65	1.76%	4.22%	6.13%	18.49%	105.56%	491,680	0.72	1.62	19.43	2,278.81	Industrial	3.53%
- ATACOCB1 PE**	S/.	0.29	0.00%	4.73%	6.67%	-28.00%	44.44%	35	#N/A #N/A	0.00	-	84.02	Mining	1.02%
- BACKUSI1 PE**	S/.	16.01	0.00%	0.00%	-3.55%	0.06%	88.89%	2,665	0.39	0.00	2.68	9,461.70	Industrial	0.82%
▲ BAP PE**	US\$	189.90	1.12%	1.33%	4.29%	20.04%	100.00%	182,001	1.13	1.97	-	15,090.74	Diverse	5.62%
- BVN PE**	US\$	12.25	0.00%	-1.84%	6.34%	6.52%	105.56%	449,892	1.69	0.68	-	3,376.52	Mining	5.88%
▼ CASAGRC1 PE**	S/.	6.20	-1.59%	-6.49%	0.00%	-9.36%	105.56%	77,517	0.69	0.00	8.64	161.26	Agricultural	1.31%
- CONTINC1 PE**	S/.	3.92	0.00%	-4.39%	-3.35%	8.74%	94.44%	43,782	0.89	3.77	14.64	5,910.71	Finance	2.85%
- CORAREH1 PE**	S/.	0.53	0.00%	0.00%	1.92%	8.16%	100.00%	49,215	1.02	6.06	8.99	248.10	Industrial	1.72%
▼ CPACASC1 PE**	S/.	7.61	-1.93%	-0.13%	1.33%	21.80%	105.56%	2,355,375	0.76	4.70	28.77	1,001.92	Industrial	2.38%
▼ CVERDEC1 PE**	US\$	22.06	-1.87%	-3.67%	5.05%	15.44%	105.56%	320,763	1.02	0.00	17.11	7,722.24	Mining	5.25%
- ENGEPEC1 PE**	S/.	2.35	0.00%	-0.42%	2.62%	-9.62%	61.11%	1,591	0.81	0.00	33.83	2,099.39	Public Services	1.44%
- ENDISPC1**	S/.	5.65	0.00%	-0.88%	7.21%	-8.28%	66.67%	36,622	0.85	3.38	12.15	1,114.06	Public Services	0.98%
▲ FERREYC1 PE**	S/.	1.88	0.53%	4.44%	3.30%	11.24%	105.56%	276,130	0.92	6.83	8.15	588.83	Diverse	4.90%
▲ GRAMONC1 PE**	S/.	2.22	1.83%	3.74%	2.30%	-52.77%	105.56%	146,987	2.70	0.00	86.94	452.47	Diverse	4.05%
▲ IFS PE**	US\$	33.75	-1.89%	0.00%	-0.15%	5.47%	94.44%	20,993	0.56	3.85	12.78	3,817.49	Diverse	7.22%
▲ INRET1 PE**	US\$	18.95	1.07%	3.55%	8.29%	-2.22%	105.56%	1,080,411	1.00	1.03	22.83	1,948.20	Diverse	5.28%
▲ LUSURC1 PE**	S/.	11.81	0.08%	0.94%	0.51%	-9.78%	105.56%	3,968	0.63	5.25	13.59	1,775.79	Public Services	1.81%
- MILPOC1 PE**	S/.	3.80	0.00%	2.15%	10.79%	11.11%	83.33%	4,224	1.21	0.00	8.79	1,552.76	Mining	1.56%
- MINSUR1 PE**	S/.	1.32	0.00%	-3.65%	-2.22%	-8.97%	77.78%	33,310	1.55	0.00	14.31	1,175.10	Mining	3.09%
▲ PML PE**	US\$	0.13	4.00%	2.36%	7.44%	-5.80%	55.56%	60,355	0.83	0.00	-	33.56	Mining	2.12%
▼ RELAPAC1 PE**	S/.	0.22	-0.91%	-3.11%	-7.63%	-6.44%	105.56%	48,467	0.87	0.00	4.30	237.95	Industrial	2.12%
▲ SCCO PE**	US\$	39.56	0.30%	0.28%	12.55%	22.51%	94.44%	109,198	0.76	0.00	31.03	30,580.96	Mining	2.14%
- SIDERC1 PE**	S/.	0.36	0.00%	0.00%	0.00%	9.09%	38.89%	2,223	1.52	0.00	5.53	136.50	Industrial	1.43%
▼ TV PE**	US\$	0.99	-3.88%	-8.33%	0.00%	16.47%	94.44%	82,972	1.87	0.00	-	400.09	Mining	2.93%
▲ UNACEMC1 PE**	S/.	2.54	1.20%	1.60%	7.63%	-0.78%	88.89%	15,844	1.09	2.05	37.04	1,291.38	Industrial	3.00%
▼ VOLCABC1 PE**	S/.	0.85	-1.16%	-4.49%	2.41%	18.06%	105.56%	58,839	1.34	1.44	11.41	1,599.56	Mining	5.90%

Quantity of shares: 26

Source: Bloomberg, Economática

\* Bloomberg Industry Classification System

\*\* PER is used in the stock market and original currency of the instrument

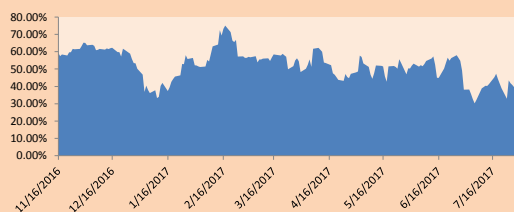
\*Legend: Variation 1D: 1 Day; 5D: 5 Days, 1M: 1 Month; YTD: Var.% 12/31/16 to date

### Sectorial Indices

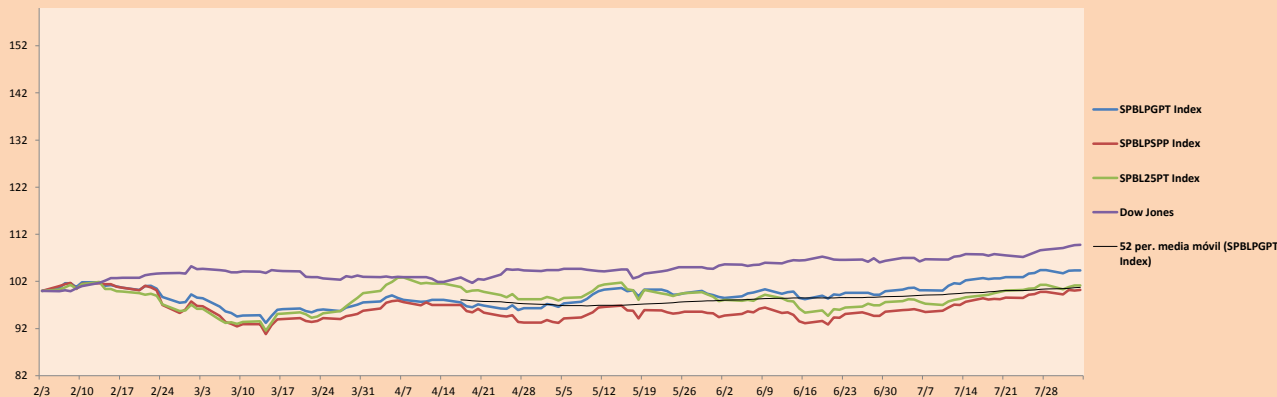
	Close	1D*	5D*	30D*	YTD*	Beta
- Mining Index	282.43	0.00%	-1.01%	8.42%	13.72%	1.40
- Consumer Index	753.38	0.00%	1.88%	3.67%	10.63%	0.45
- Industrial Index	200.91	0.00%	1.89%	3.00%	-9.13%	1.30
- Banking and Financial Index	946.18	0.00%	0.05%	2.13%	15.93%	0.91
- Construction Index	245.05	0.00%	1.20%	3.51%	-17.13%	1.48
- Services Index	446.39	0.00%	0.07%	2.64%	-7.74%	0.30
- Juniors Index	20.27	0.00%	-1.75%	-1.46%	-27.76%	0.14
- Electric Index	435.79	0.00%	0.07%	2.65%	-7.74%	0.30

\*Legend: Variation 1D: 1 Day; 5D: 5 Days, 1M: 1 Month; YTD: Var.% 12/31/16 to date

Correlation Graph of Returns of Mining Index against Metallic Index of London (3 months)



Indices (6 months)



Source: Bloomberg

Capital Market Laboratory Coordinator: Economist Bruno Bellido Anicama

Support: Sebastián Butters, Ernesto Cossio, Kaori Olulo, Jairo Trujillo

e-mail: pulsobursatil@ulima.edu.pe

facebook: www.facebook.com/pulsobursatil.ul

Phone number : 4376767 Anexos: 35340 - 35310

The content of this document is just for informational purposes . The information and opinions expressed should not be consider as recommendations for future decisions .Under any circumstances, the Capital Market Laboratory of University of Lima will be responsible for the use of the statements in this document.

# PULSO BURSÁTIL

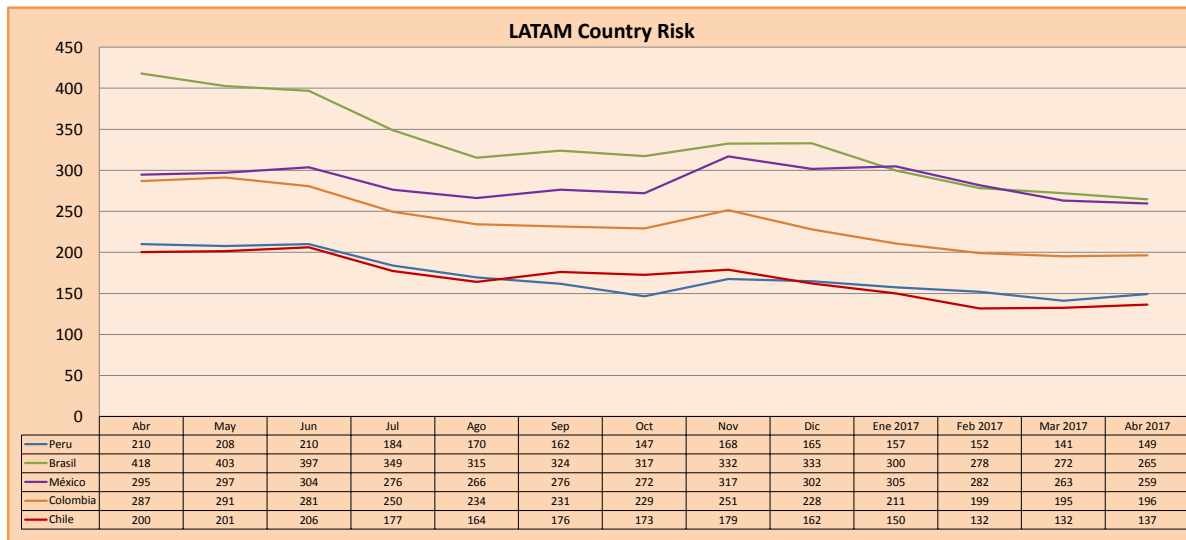
## SOVEREIGN RATING

RISK RATINGS			
Moody's	S&P	Fitch	Prime
Aaa	AAA	AAA	High credit quality
Aa1	AA+	AA+	
Aa2	AA	AA	
Aa3	AA-	AA-	
A1	A+	A+	Medium-high grade, with low credit risk
A2	A	A	
A3	A-	A-	
Baa1	BBB+	BBB+	Moderate Credit Risk
Baa2	BBB	BBB	
Baa3	BBB-	BBB-	
Ba1	BB+	BB+	It has speculative elements and it is subject to substantial credit risk
Ba2	BB	BB	
Ba3	BB-	BB-	
B1	B+	B+	It is considered speculative and it has high credit risk
B2	B	B	
B3	B-	B-	
Caa1	CCC+	CCC	Bad credit conditions and it is subject to high credit risk
Caa2	CCC		
Caa3	CCC-		
Ca	CC	DDD	Very close to default or in default
	C		
C	D		

Source: Bloomberg

Latin America Credit Rating			
Clasificadora de riesgo			
Country	Moody's	Fitch	S&P
Peru	A3		BBB+
Mexico	A3		BBB+
Venezuela	Caa3		CCC-
Brazil	Ba2		BB *-
Colombia	Baa2		BBB
Chile	Aa3		A+
Argentina	Ca		B
Panama	Baa2		BBB

Source: Bloomberg



Source: Bloomberg

Capital Market Laboratory Coordinator: Economist Bruno Bellido Anicama  
Support: Sebastián Butters, Ernesto Cossio, Kaori Olulo, Jairo Trujillo  
e-mail: pulsobursatil@ulima.edu.pe  
facebook: www.facebook.com/pulsobursatil.ul  
Phone number : 4376767 Anexes: 35340 - 35310

The content of this document is just for informational purposes. The information and opinions expressed should not be considered as recommendations for future decisions. Under any circumstances, the Capital Market Laboratory of University of Lima will be responsible for the use of the statements in this document.