

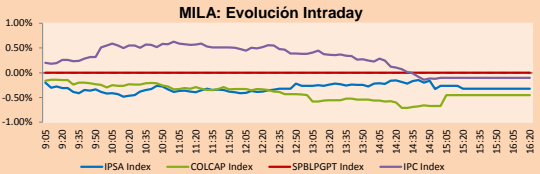
# PULSO BURSÁTIL

Lima, August 8, 2017

## MILA

Main Indices	Close	1 D	5 D	1 M	YTD	Market Cap. (US\$ bill)
▼ IPSA (Chile)	5,124.23	-0.32%	0.92%	5.55%	23.43%	193.24
▼ IGPA (Chile)	25,543.88	-0.33%	0.73%	5.18%	23.20%	221.63
▼ IGBC (Colombia)	10,858.75	-0.62%	-0.89%	-0.73%	7.45%	92.44
▼ COLCAP (Colombia)	1,469.79	-0.45%	-0.78%	-0.04%	8.74%	85.11
▲ S&P/BVL (Perú)*	16,797.10	1.18%	-0.28%	3.86%	7.90%	88.55
▲ S&P/BVL SEL (Perú)	312.79	0.69%	0.28%	5.20%	4.97%	67.27
▲ S&P/BVL LIMA 25	24,751.50	0.31%	0.00%	3.63%	4.98%	83.38
▼ IPC (México)	51,328.76	-0.12%	0.26%	2.54%	12.46%	N.D.
▲ S&P MILA 40	652.96	0.20%	0.29%	6.71%	17.50%	272.84

\* Market Cap. Of the last price Legend: Variation 1D: 1 day; 5D: 5 days; 1M: 1 Month; YTD: Var%/12/31/16 to date

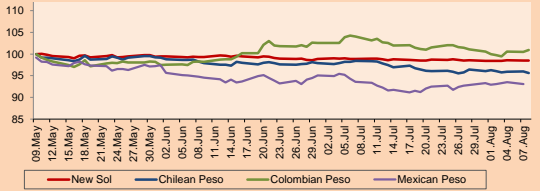


Source: Bloomberg

Currency	Price	1D*	5D*	30 D*	YTD*
- New Sol (PEN)	3,242.22	0.00%	-0.09%	-0.35%	-3.39%
▼ Chilean Peso (CLP)	648.46	-0.00382518	-0.65%	-2.82%	-3.27%
▲ Colombian Peso (COP)	2,996.70	0.46%	0.94%	-2.97%	-0.18%
▼ Mexican Peso (MXN)	17.85	-0.43%	-0.22%	-1.33%	-13.88%

\*Legend: Variation 1D: 1 day; 5D: 5 days; 1M: 1 Month; YTD: Var%/12/31/16 to date

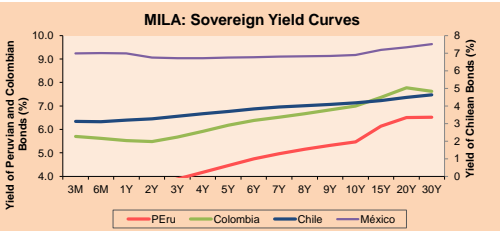
### MILA: Foreign Exchange Indices (3 months)



Base: 09/05/17=100 Source: Bloomberg

### Fixed Income

Instrument	Currency	Price	Bid Yield (%)	Ask Yield (%)	Duration
PERU 4.125 08/25/2027	USD	109.86	3.01	2.96	8.25
PERU 7.125 03/30/19	USD	109.425	1.39	1.18	1.53
PERU 7.35 07/21/25	USD	131.503	2.91	2.86	6.36
PERU 8.75 11/21/33	USD	155.703	4.07	4.02	10.21
PERU 6.50 03/14/37	USD	133.673	4.06	4.03	11.77
PERU 5.625 11/18/2050	USD	124.497	4.26	4.23	16.90
CHILE 2.25 10/30/22	USD	98.965	2.50	2.42	4.89
CHILE 3.875 08/05/20	USD	105.308	2.08	1.98	2.83
CHILE 3.625 10/30/2042	USD	99.09	3.69	3.67	16.60
COLOM 11.75 02/25/20	USD	123.705	2.17	2.06	2.19
COLOM 11.85 03/09/28	USD	171.03	3.72	3.64	7.05
COLOM 10.375 01/28/33	USD	153.75	5.33	5.18	9.25
COLOM 7.375 09/18/37	USD	130.05	5.01	4.97	11.50
COLOM 6.125 01/18/41	USD	116.253	4.96	4.93	13.31
MEX 4 10/02/23	USD	105.257	3.08	3.03	5.41
MEX5.55 01/45	USD	113.6	4.677	4.655	15.07



Source: Bloomberg

### Equity

Largest gains	Exchange	Amt.	Price	▲%
NAVARINO	Santia.	CLP	600.00	19.76
ALICORI1	Lima	PEN	7.50	7.14
CALICHERAA	Santia.	CLP	500.00	6.38
MARINSA	Santia.	CLP	30.00	6.01

Per Turnover	Exchange	Amount (US\$)
SQM-B	Santia.	11,700,964
COPEC	Santia.	10,243,884
ANDINA-B	Santia.	8,039,174
BSANTANDER	Santia.	6,236,644
CAP	Santia.	5,793,815

Largest losses	Exchange	Amt.	Price	▼%
CARTAVC1	Lima	PEN	11.10	-14.62
MELON	Santia.	CLP	0.61	-10.29
BROCALC1	Lima	PEN	7.20	-5.14
PASUR	Santia.	CLP	5810.00	-3.92

Per Volume	Exchange	Volume
ORO BLANCO	Santia.	206,730,232
VAPORES	Santia.	90,599,792
BSANTANDER	Santia.	83,193,779
NORTEGRAN	Santia.	35,462,498
BVC	Colomb.	27,013,232

### MILA

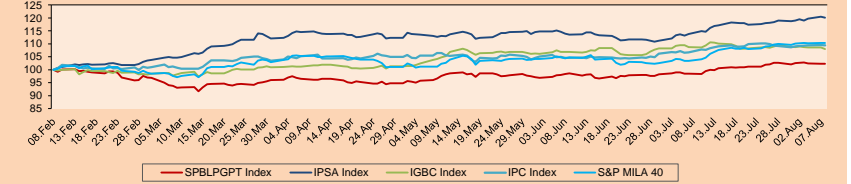
**Peru:** The General Index of the BVL of Peru ended today's session with a positive result of +1.18%. The index maintains an annual cumulative positive trend of +7.90% in local currency, while the performance adjusted a foreign currency is +11.69%. Then, the S&P/BVL Peru SEL obtained a positive performance of +0.69%, while the S&P/BVL LIMA 25 grew +0.31%. The spot PEN reached S/3.2373.

**Chile:** The IPSA index ended the day with a negative performance of -0.32%. The index sectors with the downside results were Telecommunications Services (-3.05%) and Energy (-1.44%). On the other hand, the values with the most negative results were Entel Chile SA (-3.05%) and Engie Energia Chile SA (-2.48%).

**Colombia:** The COLCAP index ended the day with negative results of -0.45%. The economic sectors with the most negative results were Industrial (-2.01%) and Energy (-1.56%). Lastly, Canacol Energy Ltd (-2.80%) and Interconexión Eléctrica SA ESP (-2.08%).

**Mexico:** The Mexican CPI index closed today with a negative result of -0.12%. The index sectors that generated the lowest returns were Health (-2.68%) and Telecommunications Services (-1.19%). Finally, the shares with the highest values were the Genomma Lab International SAB de CV (-2.68%) and the Elektra SAB de CV Group (-1.95%).

### MILA: Stock Indices (6 months)

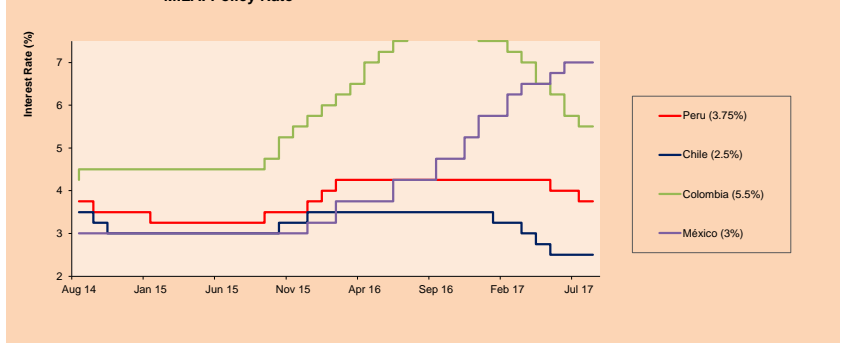


Base: 08/02/17=100 Source: Bloomberg

### ETFs

	Curr.	Close	1D	5D	30 D	YTD	Exchange
▲ iShares MSCI All Peru Capped Index Fund	USD	35.77	0.34%	-0.39%	6.08%	9.05%	NYSE Arca
▼ iShares MSCI Chile Capped	USD	45.9	-0.04%	0.97%	7.70%	22.66%	BATS
▼ Global X MSCI Colombia	USD	14.28	-0.97%	-1.45%	2.44%	10.36%	NYSE Arca
▲ iShares MSCI Mexico Capped	USD	56.51	0.21%	0.48%	4.38%	28.52%	NYSE Arca
▲ iShares MSCI Emerging Markets	USD	44.26	0.02%	0.75%	7.61%	26.42%	NYSE Arca
▼ Vanguard FTSE Emerging Markets	USD	43.52	-0.14%	0.76%	7.17%	21.63%	NYSE Arca
▼ iShares Core MSCI Emerging Markets	USD	53.34	-0.06%	0.55%	7.26%	25.65%	NYSE Arca
▼ iShares JP Morgan Emerging Markets Bonds	USD	57.65	-0.12%	0.54%	4.57%	17.87%	BATS
- Morgan Stanley Emerging Markets Domestic	USD	8.19	0.00%	-0.85%	3.28%	14.23%	New York

### MILA: Policy Rate



source: Bloomberg

Capital Market Laboratory Coordinator: Economist Bruno Bellido Anicama  
Support: Sebastián Butters, Ernesto Cossio, Kaori Olulou, Jairo Trujillo  
e-mail: pulsobursatil@ulima.edu.pe  
facebook: www.facebook.com/pulsobursatil  
Phone number: 4376767 Anexes: 35340 - 35310

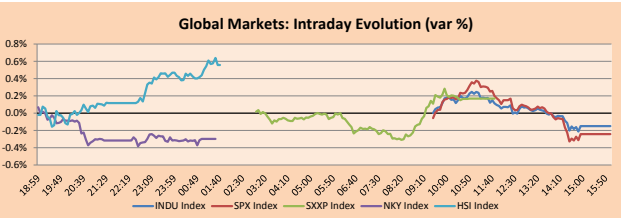


# PULSO BURSÁTIL

## WORLD

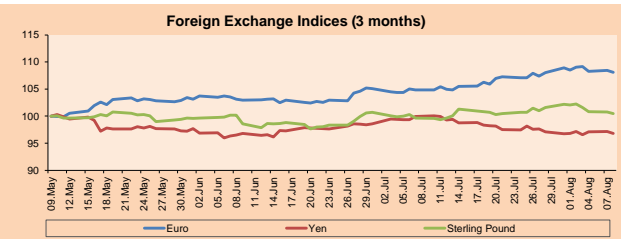
Main Indices	Close	1 D*	5 D*	1 M*	YTD*	Market Cap. (US\$ Mil.)
▼ Dow Jones (USA)	22,085.34	-0.15%	0.55%	3.13%	11.75%	6,171,190
▼ Standard & Poor's 500 (USA)	2,474.92	-0.24%	-0.06%	2.05%	10.55%	22,033,022
▼ NASDAQ Composite (USA)	6,370.46	-0.21%	0.12%	3.53%	18.34%	9,894,524
▲ Stoxx EUROPE 600 (Europe)	382.65	0.17%	0.63%	0.65%	5.87%	8,638,528
▲ DAX (Germany)	12,292.06	0.28%	0.33%	-0.78%	7.06%	979,143
▲ FTSE 100 (United Kingdom)	7,542.73	0.14%	1.60%	2.61%	5.60%	1,591,327
▲ CAC 40 (France)	5,218.89	0.21%	1.79%	1.43%	7.33%	1,254,961
▲ IBEX 35 (Spain)	10,734.70	0.55%	1.40%	2.34%	14.78%	577,115
▼ MSCI AC Asia Pacific Index	161.27	0.00%	-0.08%	5.58%	19.42%	13,636,170
▼ HANG SENG (Hong Kong)	27,854.91	0.59%	1.14%	9.92%	26.01%	2,631,384
▲ SHANGHAI SE Comp. (China)	3,281.87	0.07%	-0.33%	1.99%	5.74%	4,742,196
▲ NIKKEI 225 (Japan)	19,996.01	-0.30%	0.05%	0.34%	4.61%	3,238,224
▼ BOVESPA (Brazil)	67,898.94	-0.06%	2.08%	8.95%	12.74%	665,820
▼ Merval (Argentina)	21,255.71	-1.04%	-1.24%	-3.51%	25.64%	90,078

\*Legend: Variation 1D: 1 Day, 5D: 5 Days, 1M: 1 Month, YTD: Var.% 12/31/16 to date



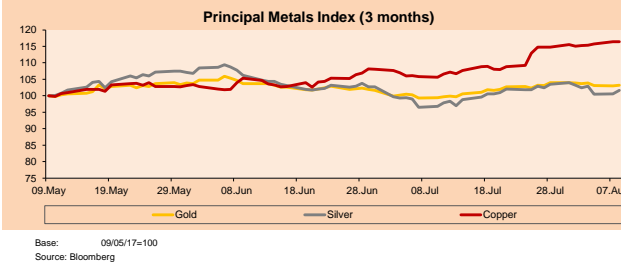
Currency	Price	1 D*	5 D*	1 M*	YTD*
▼ Euro	1.1752	-0.36%	-0.42%	3.08%	11.74%
▼ Yen	110.3200	-0.39%	-0.04%	-3.16%	-5.68%
▼ Sterling Pound	1.2992	-0.33%	-1.60%	0.79%	5.28%
▼ Yuan	6.7061	-0.23%	-0.18%	-1.46%	-3.44%
▲ Hong Kong Dollar	7.8234	0.05%	0.13%	0.15%	0.87%
▲ Brazilian Real	3.1265	0.02%	0.00%	-4.71%	-3.95%
▲ Argentine Peso	17.7201	0.12%	0.80%	4.43%	11.59%

\*Legend: Variation 1D: 1 Day, 5D: 5 Days, 1M: 1 Month, YTD: Var.% 12/31/16 to date



Commodities	Close	1 D*	5 D*	1 M*	YTD*
▲ Oro (US\$ Oz. T) (LME)	1,260.96	0.24%	-0.62%	3.94%	9.43%
▲ Plata (US\$ Oz. T) (LME)	16.46	1.11%	-1.53%	5.39%	3.39%
▲ Cobre (US\$ TM) (LME)	6,384.25	0.00%	1.12%	10.00%	15.59%
▲ Zinc (US\$ TM) (LME)	2,847.50	0.00%	2.86%	2.02%	11.33%
▼ Petróleo WTI (US\$ Barril) (NYM)	49.17	-0.45%	0.02%	10.77%	-13.72%
▼ Estano (US\$ TM) (LME)	20,705.00	0.00%	0.27%	5.24%	-2.36%
▼ Plomo (US\$ TM) (LME)	2,340.25	0.00%	1.17%	2.70%	17.04%
▼ Molibdeno (US\$ TM) (LME)	15,639.00	0.00%	-0.05%	-0.27%	5.04%
▼ Azúcar #11 (US\$ Libra) (NYB-ICE)	13.78	-0.65%	-7.39%	-2.61%	-26.11%
▼ Cacao (US\$ TM) (NYB-ICE)	2,028.00	-0.69%	-1.17%	6.68%	-6.33%
▲ Café Arábica (US\$ TM) (NYB-ICE)	142.75	0.49%	3.55%	10.74%	-0.66%

\*Leyenda: Variación 1D: 1 Día, 5D: 5 Días, 1M: 1 Mes, YTD: Var.% 31/12/15 a la fecha



## Equity

Wall Street (Stocks from S&P 500)

Largest gains	Curr.	Price	▲%	Exchange	Largest losses	Curr.	Price	▼%	Exchange
RL UN	USD	88.53	13.28	New York	ALB UN	USD	115.41	-6.23	New York
PXD UN	USD	135.38	4.43	New York	EXPD UW	USD	55.92	-5.32	NASDAQ GS
UAA UN	USD	19.25	3.72	New York	HSIC UW	USD	174.02	-5.32	NASDAQ GS
UA UN	USD	17.21	3.49	New York	ADP UW	USD	108.51	-3.26	NASDAQ GS

Europe (Stocks from STOXX EUROPE 600)

Largest gains	Curr.	Price	▲%	Exchange	Largest losses	Curr.	Price	▼%	Exchange
UN01 GY	EUR	18.82	3.41	Xetra	IWG LN	GBP	302	-11.95	Londres
CEZ CK	CZK	413.2	2.86	Prague SE	AAL LN	GBP	186.1	-7.41	Londres
ACA FP	EUR	15.675	2.79	EN Paris	HIK LN	GBP	1338	-6.37	Londres
GETIB SS	SEK	143.9	2.35	Stockholm	IHG LN	GBP	4235	-3.99	Londres

## Global Overview

### United States:

The US stock market ended the day with negative results, reversing gains from Tuesday's session, following President Donald Trump's harsh remarks against North Korea. In other words, after a profit-and-loss trading session, stocks sank to a one-day low after the US president told reporters that North Korea would see "fire and fury as the world has never seen" if the Asian country does not stop the threats. In addition, according to reports in the morning, they say that North Korea has successfully miniaturized a nuclear warhead that could fit inside a missile. On the other hand, the Financial Sector Index returned profit after news reports from California insurance regulator investigated whether Wells Fargo & Co and an insurance company hurt residents by selling insurance they did not need. Wells Fargo still ended up 0.3 percent at \$ 52.71. Finally luxury goods company, Michael Kors Holding LTD., finished at + 21.5%, after it increased its forecast of income for the whole year.

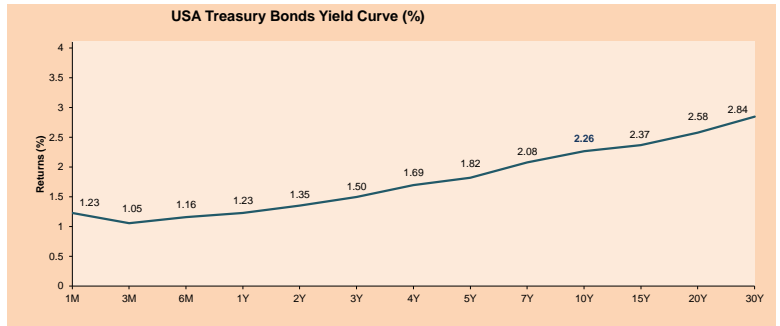
### Europe:

The European stock market closed the day with positive results among its majors. European shares closed with a two-week high helped by a big euro fall. The euro fell as the dollar advanced after a US job opening report that surpassed expectations. The Stoxx 600 European benchmark reached a maximum closing since July 26, according to Factset. Meanwhile, the Danish jewelry company Pandora A / S was one of the companies that retired its shares of the Stock Exchange due to its presented profits. The economic situation in Germany continues to be affected; Exports fell in June, which represents the first drop for this year. Imports also declined, but at a faster rate of 4.5%, which meant a slight increase in the trade surplus. On the other hand, mining stocks fell to today due to a pessimistic outlook on China's raw material demand, as trade data released today show that exports and imports grew at a slower pace in recent months, which were lower than expected. The mining companies that lost most today are Rio Tinto PLC, Antofagasta PLC and ArcelorMittal SA. The news that stood out today was the quarterly fall in profits of the company Pandora S / A; Net profit fell to DKK 1,100 million, very low than expected.

### Asia:

The Asian stock market ended today's session with mixed results among its main indices, as the US dollar weakened and was sold again, causing yesterday's gains to decline as Asian currencies like the yen appreciate (+0.1%). This means that the goods of the exporters (whose shares are of great importance in the markets) are more expensive, less attractive to the buyers and, therefore, lose competitiveness at an international level. As a result, Japan's Nikkei Stock Average benchmark index fell by 0.3%, below the 20,000 level. In addition, the trading volume was thin since much of the market participants are on vacations. Another market affected by the US dollar was Australia, whose Australian dollar increased by 0.3%. Additionally, while the largest Australian banks fell about 1%, yesterday's gains from companies such as Rio Tinto and BHP Billiton, caused by strong iron ore prices, fell (0.5% each). On the other hand, in the Chinese market, stocks declined following the July trade data release, which showed double-digit growth in both imports and exports.

ETFs	Curr.	Close	1D	5D	30 D	YTD	Exchange
SPDR S&P 500 ETF TRUST	USD	247.26	-0.25%	-0.02%	2.13%	10.62%	NYSE Arca
ISHARES MSCI EMERGING MARKET	USD	44.26	0.02%	0.75%	7.61%	26.42%	NYSE Arca
ISHARES IBOXX USD HIGH YIELD	USD	88.08	-0.43%	-0.62%	0.55%	1.77%	NYSE Arca
FINANCIAL SELECT SECTOR SPDR	USD	25.28	-0.23%	0.04%	0.92%	8.73%	NYSE Arca
VANECK VECTORS GOLD MINERS E	USD	22.25	0.23%	-2.54%	4.90%	6.36%	NYSE Arca
ISHARES RUSSELL 2000 ETF	USD	140.00	-0.31%	-1.26%	-0.35%	3.82%	NYSE Arca
SPDR GOLD SHARES	USD	119.86	0.29%	-0.65%	3.97%	9.35%	NYSE Arca
ISHARES 20+ YEAR TREASURY BO	USD	124.62	-0.36%	-0.02%	1.55%	4.61%	NASDAQ GM
POWERSHARES QQQ TRUST SERIES	USD	144.31	-0.17%	0.52%	4.75%	21.80%	NASDAQ GM
ISHARES NASDAQ BIOTECHNOLOGY	USD	314.29	-0.94%	-0.47%	0.59%	18.43%	NASDAQ GM
ENERGY SELECT SECTOR SPDR	USD	64.99	-0.23%	-2.43%	1.53%	-13.71%	NYSE Arca
PROSHARES ULTRA VIX ST FUTUR	USD	30.71	5.75%	6.04%	-24.80%	-82.45%	NYSE Arca
UNITED STATES OIL FUND LP	USD	10.06	-0.40%	-0.30%	10.55%	-14.16%	NYSE Arca
ISHARES MSCI BRAZIL CAPPED E	USD	38.74	-0.18%	1.63%	13.71%	16.20%	NYSE Arca
SPDR S&P OIL & GAS EXP & PR	USD	30.71	-0.16%	-4.86%	0.16%	-25.86%	NYSE Arca
UTILITIES SELECT SECTOR SPDR	USD	54.17	0.41%	1.21%	5.20%	11.53%	NYSE Arca
ISHARES US REAL ESTATE ETF	USD	80.12	-0.55%	-1.11%	1.80%	4.13%	NYSE Arca
SPDR S&P BIOTECH ETF	USD	77.67	-1.12%	0.75%	-0.75%	31.22%	NYSE Arca
ISHARES IBOXX INVESTMENT GRA	USD	120.19	-0.48%	-0.86%	0.39%	2.57%	NYSE Arca
ISHARES JIP MORGAN USD EMERGI	USD	115.20	-0.21%	0.23%	2.04%	4.52%	NASDAQ GM
REAL ESTATE SELECT SECT SPDR	USD	32.42	-0.46%	-0.95%	2.24%	5.43%	NYSE Arca
ISHARES CHINA LARGE-CAP ETF	USD	43.31	0.72%	0.65%	9.70%	24.78%	NYSE Arca
CONSUMER STAPLES SPDR	USD	55.22	-0.38%	-0.07%	1.30%	6.79%	NYSE Arca
VANECK VECTORS JUNIOR GOLD M	USD	32.24	0.06%	-3.88%	3.04%	2.19%	NYSE Arca
SPDR BBG BARC HIGH YIELD BND	USD	37.10	-0.30%	-0.54%	0.73%	1.78%	NYSE Arca
VANGUARD REIT ETF	USD	63.49	-0.48%	-1.36%	1.82%	1.16%	NYSE Arca



Source: Bloomberg

Capital Market Laboratory Coordinador: Economist Bruno Bellido Anicama  
Support: Sebastián Butters, Ernesto Cossio, Kaori Olulo, Jairo Trujillo  
e-mail: pulsobursatil@ulima.edu.pe  
facebook: www.facebook.com/pulsobursatil  
Phone number : 4376767 Anexos: 35340 - 35310



# PULSO BURSÁTIL

## LIMA

### Stocks

Ticker	Currency	Price	1D*	5D*	30D*	YTD*	Frequency	Volume (US\$)	Beta	Dividend Yield (%)	Price Earning	Market Cap. (M US\$)	Economic Sector*	Index Weight
▲ ALICORC1 PE**	S/.	8.75	0.11%	4.04%	7.49%	19.86%	105.56%	2,011,421	0.74	1.60	19.66	2,303.48	Industrial	3.53%
▲ ATACOCB1 PE**	S/.	0.31	5.17%	8.93%	17.31%	-23.75%	61.11%	67,008	#N/A #N/A	0.00	-	88.88	Mining	1.02%
▲ BACKUSI1 PE**	S/.	16.50	2.17%	3.06%	3.13%	3.13%	88.89%	13,637	0.40	3.35	2.76	9,536.97	Industrial	0.82%
▲ BAP PE**	US\$	195.00	3.83%	3.34%	7.03%	23.26%	100.00%	1,723,398	1.11	1.92	-	15,496.02	Diverse	5.62%
▲ BVN PE**	US\$	12.13	1.08%	-0.98%	5.48%	5.48%	105.56%	71,815	1.69	0.69	-	3,343.45	Mining	5.88%
- CASAGRC1 PE**	S/.	6.25	0.00%	-1.57%	1.63%	-8.63%	105.56%	28,879	0.68	0.00	8.71	162.38	Agricultural	1.31%
▼ CONTINC1 PE**	S/.	3.95	-0.25%	-1.25%	-2.40%	9.57%	94.44%	25,312	0.91	3.75	14.75	5,949.15	Finance	2.85%
▼ CORAREH1 PE**	S/.	0.50	-1.96%	-5.66%	-1.96%	2.04%	105.56%	16,997	1.05	6.42	8.48	245.96	Industrial	1.72%
▼ CPACASC1 PE**	S/.	7.49	-1.58%	-1.45%	0.13%	19.88%	105.56%	110,219	0.77	4.77	28.32	985.09	Industrial	2.38%
▲ CVERDEC1 PE**	US\$	22.75	1.11%	1.11%	10.28%	19.05%	105.56%	404,754	1.05	0.00	17.65	7,963.77	Mining	5.25%
- ENGEPEC1 PE**	S/.	2.35	0.00%	-0.42%	3.07%	-9.62%	66.67%	4,281	0.84	3.50	33.83	2,096.99	Public Services	1.44%
- ENDISPC1**	S/.	5.65	0.00%	0.00%	5.61%	-8.28%	66.67%	2,504	0.87	0.00	12.15	1,112.79	Public Services	0.98%
▼ FERREYC1 PE**	S/.	1.85	-1.07%	0.00%	1.65%	9.47%	105.56%	47,927	0.90	6.94	8.02	578.77	Diverse	4.90%
▼ GRAMONC1 PE**	S/.	2.20	-0.90%	1.85%	5.77%	-53.19%	105.56%	20,828	2.74	0.00	86.16	447.88	Diverse	4.05%
▼ IFS PE**	US\$	33.75	-0.44%	-1.89%	0.00%	5.47%	94.44%	8,100	0.57	3.85	12.79	3,817.49	Diverse	7.22%
▲ INRET1 PE**	US\$	19.05	0.53%	1.33%	9.99%	-1.70%	105.56%	447,028	1.00	1.02	22.98	1,958.48	Diverse	5.28%
▲ LUSURC1 PE**	S/.	11.90	0.76%	1.10%	0.00%	-9.09%	100.00%	72,978	0.66	5.21	13.69	1,787.28	Public Services	1.81%
▼ MILPOC1 PE**	S/.	3.75	-1.32%	-1.32%	6.23%	9.65%	77.78%	6,643	1.23	0.00	8.66	1,531.06	Mining	1.56%
▲ MINSUR1 PE**	S/.	1.35	2.27%	2.27%	1.50%	-6.90%	77.78%	4,525	1.59	0.00	14.62	1,200.44	Mining	3.09%
▲ PML PE**	US\$	0.13	2.31%	6.40%	9.92%	-3.62%	61.11%	10,692	0.85	0.00	-	34.33	Mining	2.12%
▼ RELAPAC1 PE**	S/.	0.21	-3.23%	-2.33%	-8.70%	-9.87%	105.56%	113,478	0.87	0.00	4.14	228.96	Industrial	2.12%
▲ SCCO PE**	US\$	39.15	0.93%	-0.89%	12.02%	21.24%	100.00%	54,073	1.00	1.00	30.70	30,264.02	Mining	2.14%
▼ SIDERC1 PE**	S/.	0.33	-3.78%	-8.06%	-5.97%	0.30%	44.44%	2,552	1.55	0.00	5.08	125.36	Industrial	1.43%
▲ TV PE**	US\$	1.04	0.97%	0.97%	10.64%	22.35%	94.44%	76,429	1.97	0.00	-	420.30	Mining	2.93%
- UNACEMC1 PE**	S/.	2.52	0.00%	0.80%	5.88%	-1.56%	94.44%	179,293	1.09	2.06	36.75	1,279.74	Industrial	3.00%
▲ VOLCABC1 PE**	S/.	0.84	1.20%	-2.33%	3.70%	16.67%	105.56%	4,354,429	1.36	1.46	11.26	1,539.82	Mining	5.90%

Quantity of shares: 26

Source: Bloomberg, Economática

\* Bloomberg Industry Classification System

\*\* PER is used in the stock market and original currency of the instrument

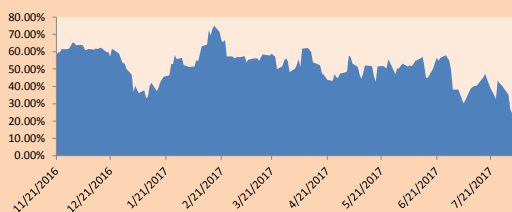
\*Legend: Variation 1D: 1 Day; 5D: 5 Days, 1M: 1 Month; YTD: Var.% 12/31/16 to date

### Sectorial Indices

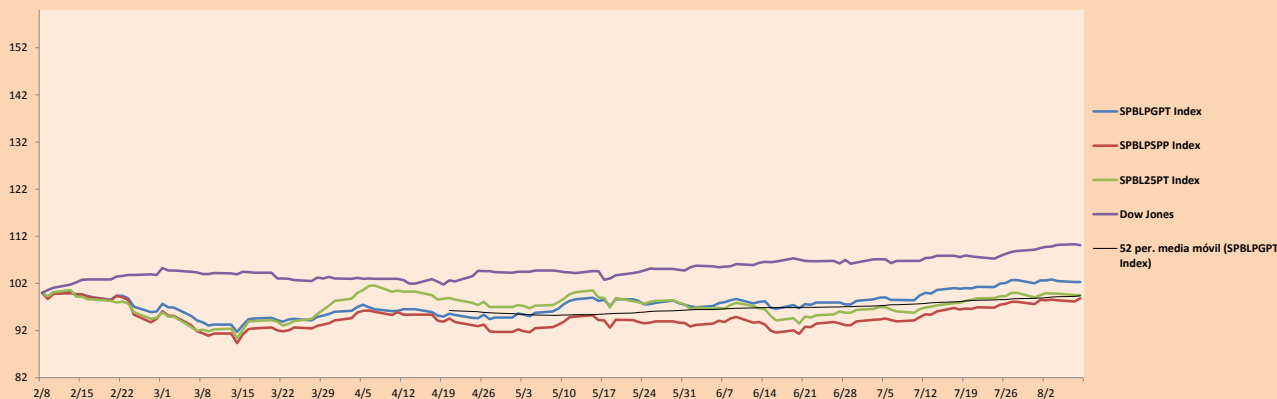
	Close	1D*	5D*	30D*	YTD*	Beta
- Mining Index	278.49	0.00%	-1.47%	7.75%	12.13%	1.43
- Consumer Index	769.94	0.00%	2.88%	6.59%	13.06%	0.46
- Industrial Index	200.57	0.00%	0.93%	3.67%	-9.28%	1.30
- Banking and Financial Index	945.40	0.00%	-0.53%	2.20%	15.84%	0.89
- Construction Index	244.43	0.00%	0.82%	4.39%	-17.34%	1.50
- Services Index	445.26	0.00%	0.11%	1.99%	-7.97%	0.29
- Juniors Index	20.54	0.00%	1.33%	-1.34%	-26.80%	0.13
- Electric Index	434.68	0.00%	0.11%	1.99%	-7.97%	0.29

\*Legend: Variation 1D: 1 Day; 5D: 5 Days, 1M: 1 Month; YTD: Var.% 12/31/16 to date

### Correlation Graph of Returns of Mining Index against Metallic Index of London (3 months)



### Indices (6 months)



Source: Bloomberg

Capital Market Laboratory Coordinator: Economist Bruno Bellido Anicama

Support: Sebastián Butters, Ernesto Cossio, Kaori Olulo, Jairo Trujillo

e-mail: pulsobursatil@ulima.edu.pe

facebook: www.facebook.com/pulsobursatil.ul

Phone number : 4376767 Anexes: 35340 - 35310

The content of this document is just for informational purposes . The information and opinions expressed should not be consider as recommendations for future decisions .Under any circumstances, the Capital Market Laboratory of University of Lima will be responsible for the use of the statements in this document.

# PULSO BURSÁTIL

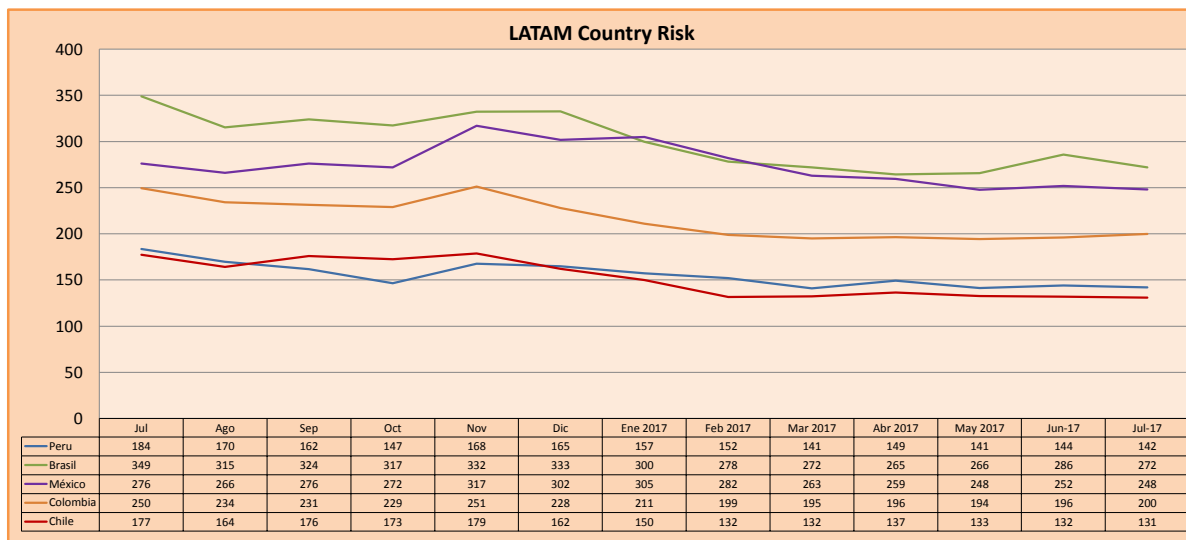
## SOVEREIGN RATING

RISK RATINGS			
Moody's	S&P	Fitch	Prime
Aaa	AAA	AAA	High credit quality
Aa1	AA+	AA+	
Aa2	AA	AA	
Aa3	AA-	AA-	
A1	A+	A+	Medium-high grade, with low credit risk
A2	A	A	
A3	A-	A-	
Baa1	BBB+	BBB+	Moderate Credit Risk
Baa2	BBB	BBB	
Baa3	BBB-	BBB-	
Ba1	BB+	BB+	It has speculative elements and it is subject to substantial credit risk
Ba2	BB	BB	
Ba3	BB-	BB-	
B1	B+	B+	It is considered speculative and it has high credit risk
B2	B	B	
B3	B-	B-	
Caa1	CCC+		Bad credit conditions and it is subject to high credit risk
Caa2	CCC		
Caa3	CCC-	CCC	
Ca	CC		Very close to default or in default
	C		
C	D	DDD DD D	

Source: Bloomberg

Latin America Credit Rating			
Clasificadora de riesgo			
Country	Moody's	Fitch	S&P
Peru	A3		BBB+
Mexico	A3		BBB+
Venezuela	Caa3		CCC-
Brazil	Ba2		BB *-
Colombia	Baa2		BBB
Chile	Aa3		A+
Argentina	Ca		B
Panama	Baa2		BBB

Source: Bloomberg



Source: Bloomberg

Capital Market Laboratory Coordinator: Economist Bruno Bellido Anicama  
 Support: Sebastián Butters, Ernesto Cossio, Kaori Olulo, Jairo Trujillo  
 e-mail: pulsobursatil@ulima.edu.pe  
 facebook: www.facebook.com/pulsobursatil.ul  
 Phone number : 4376767 Anexes: 35340 - 35310

The content of this document is just for informational purposes. The information and opinions expressed should not be considered as recommendations for future decisions. Under any circumstances, the Capital Market Laboratory of University of Lima will be responsible for the use of the statements in this document.