

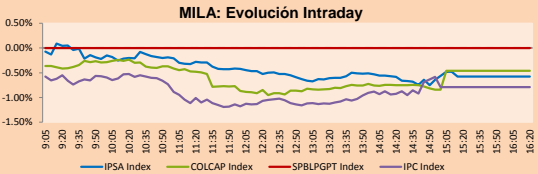
PULSO BURSÁTIL

Lima, August 10, 2017

MILA

Main Indices	Close	1 D	5 D	1 M	YTD	Market Cap. (US\$ bill)
▼ IPSA (Chile)	5,057.11	-0.57%	-0.35%	3.17%	21.82%	191.52
▼ IGPA (Chile)	25,228.95	-0.52%	-0.42%	3.01%	21.68%	219.68
▼ IGBC (Colombia)	10,797.80	-0.51%	-1.49%	-1.14%	6.84%	92.36
▼ COLCAP (Colombia)	1,463.54	-0.46%	-1.18%	-0.26%	8.28%	84.97
▼ S&P/BVL (Perú)*	17,125.93	-1.37%	1.44%	5.98%	10.01%	89.75
▼ S&P/BVL SEL (Perú)	309.92	-1.69%	-0.64%	3.96%	4.01%	68.55
▼ S&P/BVL LIMA 25	24,849.86	-1.07%	0.09%	4.31%	5.39%	84.60
▼ IPC (México)	50,906.84	-0.65%	-0.75%	0.57%	11.53%	N.D.
▼ S&P MILA 40	652.02	-0.13%	-0.12%	5.91%	17.34%	272.42

* Market Cap. Of the last price *Legend: Variation 1D: 1 day; 5D: 5 days; 1M: 1 Month; YTD: Var%/12/31/16 to date

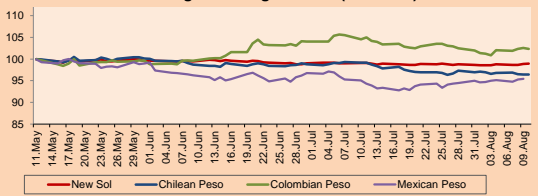


Source: Bloomberg

Currency	Price	1D*	5D*	30 D*	YTD*
▼ New Sol (PEN)	3,251.6	-0.09%	-0.40%	-0.16%	-3.11%
▲ Chilean Peso (CLP)	648.19	7.7144E-05	-0.14%	-2.74%	-3.31%
▼ Colombian Peso (COP)	2,997.03	-0.16%	1.47%	-2.50%	-0.17%
▲ Mexican Peso (MXN)	17.97	0.14%	0.73%	0.35%	-13.29%

*Legend: Variation 1D: 1 day; 5D: 5 days; 1M: 1 Month; YTD: Var%/12/31/16 to date

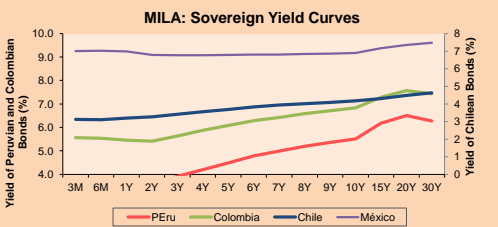
MILA: Foreign Exchange Indices (3 months)



Base: 11/05/17=100
Source: Bloomberg

Fixed Income

Instrument	Currency	Price	Bid Yield (%)	Ask Yield (%)	Duration
PERU 4.125 08/25/2027	USD	109.613	3.03	2.98	8.24
PERU 7.125 03/30/19	USD	109.425	1.35	1.14	1.52
PERU 7.35 07/21/25	USD	131.225	2.94	2.89	6.35
PERU 8.75 11/21/33	USD	155.392	4.09	4.04	10.19
PERU 6.50 03/14/37	USD	133.113	4.10	4.06	11.74
PERU 5.625 11/18/2050	USD	124.207	4.28	4.24	16.85
CHILE 2.25 10/30/22	USD	98.96	2.50	2.42	4.88
CHILE 3.875 08/05/20	USD	105.292	2.08	1.98	2.82
CHILE 3.625 10/30/2042	USD	99.205	3.69	3.66	16.57
COLOM 11.75 02/25/20	USD	123.625	2.19	2.01	2.17
COLOM 11.85 03/09/28	USD	170.389	3.77	3.69	7.04
COLOM 10.375 01/28/33	USD	153.75	5.32	5.18	9.23
COLOM 7.375 09/18/37	USD	129.395	5.06	5.01	11.48
COLOM 6.125 01/18/41	USD	115.305	5.02	4.99	13.28
MEX 4 10/02/23	USD	104.887	3.14	3.09	5.40
MEX5.55 01/45	USD	112.232	4.759	4.736	15



Source: Bloomberg

Equity	Exchange	Amt.	Price	▲%	Largest losses	Exchange	Amt.	Price	▼%	
Largest gains	MELON	Santia.	CLP	0.68	11.48	ESVAL-C	Santia.	CLP	0.03	-19.35
BESALCO	Santia.	CLP	672.11	4.99	SINTUC1	Lima	PEN	5.20	-5.45	
VOLCAAC1	Lima	PEN	1.80	4.65	SECURITY	Santia.	CLP	260.78	-4.79	
INVERCAP	Santia.	CLP	1690.00	3.05	BAP	Lima	USD	193.60	-3.39	
Per Turnover	Exchange	Amount (US\$)	Per Volume	Exchange	Volume					
CMPC	Santia.	15,056,528	ESVAL-C	Santia.	405,369,920					
CENCOSUD	Santia.	13,543,642	ORO BLANCO	Santia.	287,645,962					
PFBCOLOM	Colomb.	11,759,255	VAPORES	Santia.	95,148,876					
PARAUCO	Santia.	8,661,019	BSANTANDER	Santia.	41,946,578					
CAP	Santia.	7,182,409	CHILE	Santia.	24,407,026					

MILA

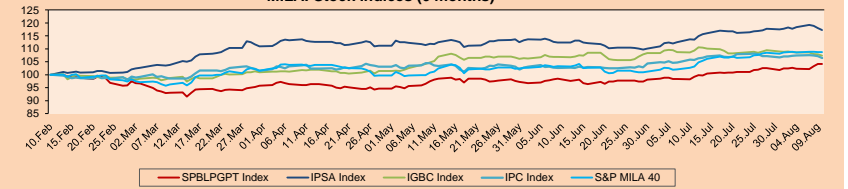
Peru: The General Index of the Peruvian BVL ended the session today with a negative performance of -1.37%. The index maintained a positive accumulated annual trend of +10.01% in local currency, while the adjusted performance in foreign currency is +13.55%. Then, the S&P/BVL Peru SEL lost -1.69%, while S&P/BVL LIMA 25 decreased -1.07%. The spot PEN reached S/ 3.2516.

Chile: The IPSA index ended the day with a negative return of -0.57%. The index sectors with the most negative results were Information Technology (-2.32%) and Materials (-2.22%). On the other hand, the values with the most negative results were Grupo Security SA (-4.79%) and Empresas CMPC SA (-3.31%).

Colombia: The COLCAP index closed the session with negative results of -0.46%. The sectors with downward performance were Industrial (-2.10%) and Telecommunications Services (-1.90%). In addition, the most negative shares were Avianca Holdings SA (+ 2.79%) and Telecommunication Company (-1.90%).

Mexico: The Mexican IPC index closed today with a negative result of -0.65%. The index sectors that generated the most negative returns were Public Services (-2.53%) and Materials (-2.24%). Finally, the shares with the lowest yields were Grupo Financiero Inbursa SA (-3.22%) and Grupo Mexico SAB de CV (-2.87%).

MILA: Stock Indices (6 months)

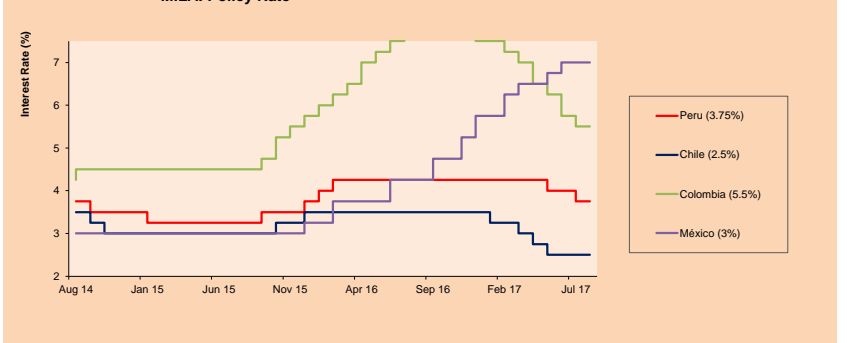


Base: 13/02/17=100
Source: Bloomberg

ETFs

ETFs	Curr.	Close	1D	5D	30 D	YTD	Exchange
▼ iShares MSCI All Peru Capped Index Fund	USD	35.76	-1.46%	-0.53%	5.18%	9.02%	NYSE Arca
▼ iShares MSCI Chile Capped	USD	45.35	-0.40%	-0.48%	5.15%	21.19%	BATS
▼ Global X MSCI Colombia	USD	14.1528	-0.19%	-2.93%	1.16%	9.37%	NYSE Arca
▼ iShares MSCI Mexico Capped	USD	55.58	-0.86%	-1.40%	0.85%	26.40%	NYSE Arca
▼ iShares MSCI Emerging Markets	USD	42.82	-2.37%	-2.22%	2.29%	22.31%	NYSE Arca
▼ Vanguard FTSE Emerging Markets	USD	42.28	-2.31%	-1.97%	2.65%	18.17%	NYSE Arca
▼ iShares Core MSCI Emerging Markets	USD	51.56	-2.42%	-2.33%	2.08%	21.46%	NYSE Arca
▼ iShares JP Morgan Emerging Markets Bonds	USD	56.42	-1.54%	-1.83%	1.40%	15.35%	BATS
▼ Morgan Stanley Emerging Markets Domestic	USD	7.98	-0.75%	-3.74%	1.40%	11.30%	New York

MILA: Policy Rate



source: Bloomberg

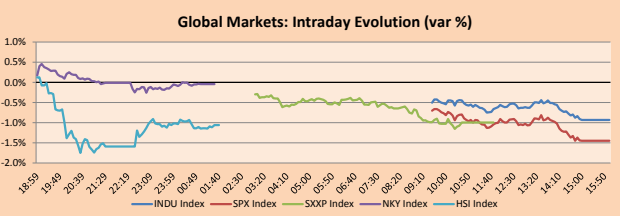
Capital Market Laboratory Coordinator: Economist Bruno Bellido Anicama
Support: Sebastián Butters, Ernesto Cossio, Kaori Olulo, Jairo Trujillo
e-mail: pulsobursatil@ulima.edu.pe
facebook: www.facebook.com/pulsobursatil.ul
Phone number : 4376767 Anexes: 35340 - 35310

PULSO BURSÁTIL

WORLD

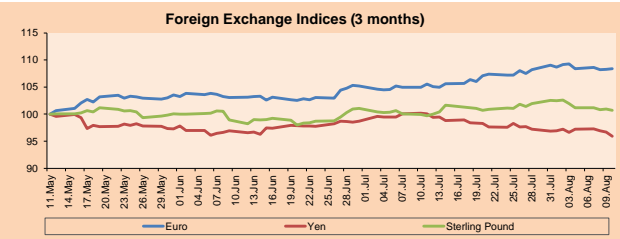
Main Indices	Close	1 D*	5 D*	1 M*	YTD*	Market Cap. (US\$ Mil.)
▼ Dow Jones (USA)	21,844.01	-0.93%	-0.83%	2.03%	10.53%	6,169,217
▼ Standard & Poor's 500 (USA)	2,438.21	-1.45%	-1.37%	0.44%	8.91%	21,961,374
▼ NASDAQ Composite (USA)	6,216.87	-2.13%	-1.95%	0.66%	15.49%	9,854,990
▼ Stoxx EUROPE 600 (Europe)	376.05	-1.00%	-0.76%	-1.46%	4.05%	8,473,791
▼ DAX (Germany)	12,014.30	-1.15%	-1.16%	-3.47%	4.64%	956,082
▼ FTSE 100 (United Kingdom)	7,389.94	-1.44%	-1.13%	0.27%	3.46%	1,561,613
▼ CAC 40 (France)	5,115.23	-0.59%	-0.30%	-0.98%	5.20%	1,227,820
▼ IBEX 35 (Spain)	10,450.00	-1.38%	-0.94%	-0.57%	11.74%	561,602
▼ MSCI AC Asia Pacific Index	159.77	-0.49%	-0.27%	4.66%	18.83%	13,569,863
▼ HANG SENG (Hong Kong)	27,444.00	-1.13%	-0.32%	6.05%	24.74%	2,627,327
▼ SHANGHAI SE Comp. (China)	3,261.75	-0.42%	-0.34%	1.83%	5.09%	4,755,553
▼ NIKKEI 225 (Japan)	19,729.74	-0.05%	-1.50%	-2.31%	3.22%	3,233,207
▼ BOVESPA (Brazil)	66,992.09	-1.00%	0.32%	6.29%	11.23%	652,909
▲ Merval (Argentina)	21,132.97	0.99%	-2.97%	-3.75%	24.92%	88,801

*Legend: Variation 1D: 1 Day; 5D: 5 Days; 1M: 1 Month; YTD: Var.% 12/31/16 to date



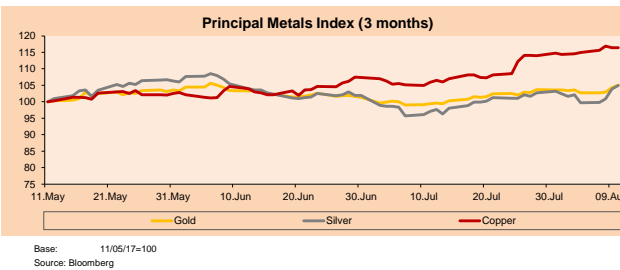
Currency	Price	1 D*	5 D*	1 M*	YTD*
▲ Euro	1.1772	0.11%	-0.83%	2.66%	11.93%
▼ Yen	109.2000	-0.79%	-0.77%	-4.16%	-6.63%
▼ Sterling Pound	1.2977	-0.21%	-1.23%	1.00%	5.16%
▼ Yuan	6.6470	-0.41%	-1.05%	-2.29%	-4.29%
▲ Hong Kong Dollar	7.8176	0.03%	0.00%	0.06%	0.80%
▲ Brazilian Real	3.1760	0.64%	1.97%	-2.41%	-2.43%
▲ Argentine Peso	17.7130	0.07%	0.26%	4.16%	11.54%

*Legend: Variation 1D: 1 Day; 5D: 5 Days; 1M: 1 Month; YTD: Var.% 12/31/16 to date



Commodities	Close	1 D*	5 D*	1 M*	YTD*
▲ Oro (US\$ Oz. T) (LME)	1,286.34	0.70%	1.40%	5.63%	11.64%
▲ Plata (US\$ Oz. T) (LME)	17.12	1.01%	2.77%	8.09%	7.56%
▲ Cobre (US\$ TM) (LME)	6,426.75	0.00%	1.60%	9.91%	16.36%
▲ Zinc (US\$ TM) (LME)	2,919.75	0.00%	4.94%	3.56%	14.15%
▼ Petróleo WTI (US\$ Barril) (NYM)	48.51	-2.12%	-1.06%	7.25%	-14.88%
▼ Estiopa (US\$ TM) (LME)	20,295.00	0.00%	-2.29%	2.09%	-4.29%
▼ Plomo (US\$ TM) (LME)	2,328.75	0.00%	-0.70%	1.94%	16.47%
▼ Molibdeno (US\$ TM) (LME)	15,639.00	0.00%	-0.04%	-0.22%	5.04%
▼ Añúcar #11 (US\$ Libra) (NYB-ICE)	13.24	-2.93%	-7.48%	-1.49%	-29.01%
▼ Cacao (US\$ TM) (NYB-ICE)	1,965.00	-2.00%	-5.80%	6.39%	-9.24%
▼ Café Arabica (US\$ TM) (NYB-ICE)	142.00	-2.84%	-1.25%	8.85%	-3.20%

*Leyenda: Variación 1D: 1 Día; 5D: 5 Días; 1M: 1 Mes; YTD: Var.% 31/12/15 a la fecha



Equity

Wall Street (Stocks from S&P 500)

Largest gains	Curr.	Price	▲ %	Exchange	Largest losses	Curr.	Price	▼ %	Exchange
DOV UN	USD	85.51	-1.52	New York	SCG UN	USD	62.01	-1.10	New York
FB UW	USD	167.4	-2.21	NASDAQ GS	IBM UN	USD	141.84	0.05	New York
CB UN	USD	148.33	-0.64	New York	KMB UN	USD	121.07	-0.44	New York
AES UN	USD	11.38	1.16	New York	AMAT UW	USD	42.03	-4.06	NASDAQ GS

Europe (Stocks from STOXX EUROPE 600)

Largest gains	Curr.	Price	▲ %	Exchange	Largest losses	Curr.	Price	▼ %	Exchange
SGL LN	GBP	678	-1.53	Londres	GN DC	DKK	185.6	-1.90	Copenhagen
GLEN LN	GBP	331.45	-2.46	Londres	HNRY GY	EUR	103.75	-4.86	Xetra
AGN NA	EUR	5.106	5.30	EN Amsterdam	BT/A LN	GBP	298.9	-4.60	Londres
AMFV LN	GBP	461.5	5.29	Londres	HELN SE	CHF	543.5	-1.18	SIX Swiss Ex

Global Overview

United States:

The stock market ended the session with negative results, as high tensions with North Korea weighed on the market. In other words, the downtrend of the stock market comes amid rising geopolitical tensions, after an army commander in the North Korean army said that "sound dialogue" is not possible with the US president and that "only Absolute strength can work on it" North Korea also laid out detailed plans for how to launch a missile at US military bases in Guam. In addition, the CBOE VIX volatility index has been steadily increasing in the last three sessions, coinciding with a decline in stocks and a jump in the demand for assets as shelters, including gold, +0.95%, which was established in a Maximum two-month and 10-year Treasury bonds maintained an annual yield level of about 2.20%, bearing in mind that bond prices move inversely to yields. Finally, the price of Snapchat shares rose in the market +1.55%, however they fell around -12.13% after the hours, after the profits did not reach the expectations, informing a smaller number of users.

Europe:

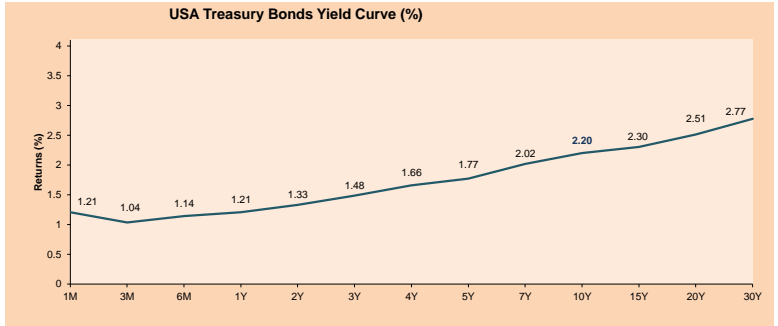
The European stock market closed the day with negative results among its main indexes. European shares did not make a profit for today because of the tension that still persists between the United States and North Korea. In addition, the German consumer goods company Henkel AG & Co. was one of the companies that withdrew their shares from the market. The Stoxx 600 European benchmark index fell close to 1% led by losses in the industrial sector. The sectors of public services and health care were the only ones that obtained improvements. Specialists explain that "the confrontation between the two nations has frightened many investors." Whenever traders hear the word "war" they often run up the hills, and that is exactly what we have seen today. For today, trading at \$ 1.1730 very low from yesterday's \$ 1.1760. However, Henkel fell about 4% after the manufacturer of care products recorded organic growth of 2.2% in the second quarter, which was below the 3.2% consensus. As for the United Kingdom, shares of homebuilders fell after the Chartered Surveyors' real institution said that house prices in the UK in July grew at their slowest pace in more than four years. House price growth across the UK was 1% compared to 7% in June.

Asia:

The Asian stock market ended the session with negative results among its main indexes, among which the Hang Seng stood out with a variation of -1.13% and Shanghai with -0.42%. A sell-off came on Thursday in several Asian stock markets, with low volumes likely to amplify the effects of the rhetorical battle between the United States and North Korea. Geopolitical tensions appeared to be no closer to relaxing on Thursday as North Korea waged a war of words with US President Donald Trump. "Healthy dialogue is not possible with a guy devoid of reason and only absolute strength can work on it," the North Korean state press said on Thursday, according to the BBC. The Asian country also detailed plans for the threat of a missile strike in Guam. On the other hand, the Reserve Bank of New Zealand kept rates on hold on Thursday after CPI inflation fell in the second quarter. "There are still a lot of uncertainties and it is possible that the policy will have to adjust accordingly," said RBNZ Gov. Graeme Wheeler, following a decision to leave the official cash rate at 1.75 percent.

ETFs

ETFs	Curr.	Close	1D	5D	30 D	YTD	Exchange
SPDR S&P 500 ETF TRUST	USD	243.76	-1.41%	-1.30%	0.65%	9.05%	NYSE Arca
ISHARES MSCI EMERGING MARKET	USD	42.82	-2.37%	-2.22%	2.29%	22.31%	NYSE Arca
ISHARES IBOXX USD HIGH YIELD	USD	87.18	-0.64%	-1.47%	-0.52%	0.73%	NYSE Arca
FINANCIAL SELECT SECTOR SPDR	USD	24.83	-1.78%	-1.55%	0.12%	6.30%	NYSE Arca
VANECK VECTORS GOLD MINERS E	USD	23.08	2.12%	1.67%	6.65%	10.33%	NYSE Arca
ISHARES RUSSELL 2000 ETF	USD	136.27	-1.82%	-2.34%	-2.87%	1.05%	NYSE Arca
SPDR GOLD SHARES	USD	122.21	0.74%	1.34%	5.70%	11.50%	NYSE Arca
ISHARES 20+ YEAR TREASURY BO	USD	126.37	0.85%	0.29%	2.65%	6.08%	NASDAQ GM
POWERSHARES QQQ TRUST SERIES	USD	141.03	-2.14%	-1.85%	1.42%	19.03%	NASDAQ GM
ISHARES NASDAQ BIOTECHNOLOGY	USD	304.45	-2.82%	-3.21%	-2.42%	14.72%	NASDAQ GM
ENERGY SELECT SECTOR SPDR	USD	64.36	-1.68%	-1.64%	-0.33%	-14.55%	NYSE Arca
PROSHARES ULTRA VIX SIX FT FUTUR	USD	40.93	26.72%	36.34%	6.15%	-76.61%	NYSE Arca
UNITED STATES OIL FUND LP	USD	9.91	-2.36%	-1.10%	6.90%	-15.44%	NYSE Arca
ISHARES MSCI BRAZIL CAPPED E	USD	37.61	-1.90%	-2.13%	6.73%	12.81%	NYSE Arca
SPDR S&P OIL & GAS EXP & PR	USD	30.37	-1.46%	-0.59%	-3.31%	-26.68%	NYSE Arca
UTILITIES SELECT SECTOR SPDR	USD	54.06	0.32%	0.07%	5.13%	11.30%	NYSE Arca
ISHARES US REAL ESTATE ETF	USD	79.37	-0.78%	-1.07%	1.72%	3.16%	NYSE Arca
SPDR S&P BIOTECH ETF	USD	74.47	-3.61%	-3.07%	-4.33%	25.82%	NYSE Arca
ISHARES IBOXX INVESTMENT GRA	USD	120.27	-0.03%	-0.78%	0.25%	2.64%	NYSE Arca
ISHARES JP MORGAN USD EMERGI	USD	114.76	-0.42%	-0.64%	1.10%	4.12%	NASDAQ GM
REAL ESTATE SELECT SECT SPDR	USD	32.17	-0.89%	-0.98%	2.42%	4.62%	NYSE Arca
ISHARES CHINA LARGE CAP ETF	USD	41.74	-2.86%	-2.59%	3.57%	20.25%	NYSE Arca
CONSUMER STAPLES SPDR	USD	55.08	-0.42%	-0.16%	2.04%	6.52%	NYSE Arca
VANECK VECTORS JUNIOR GOLD M	USD	33.33	1.55%	0.69%	3.57%	5.64%	NYSE Arca
SPDR BBG BARC HIGH YIELD BND	USD	36.68	-0.70%	-1.42%	-0.54%	0.63%	NYSE Arca
VANGUARD REIT ETF	USD	82.61	-0.72%	-1.30%	1.79%	0.10%	NYSE Arca



Source: Bloomberg

Capital Market Laboratory Coordinator: Economist Bruno Bellido Anicam
Support: Sebastián Butters, Ernesto Cossio, Kaori Olulo, Jairo Trujillo
e-mail: pulso@ulima.edu.pe
facebook: www.facebook.com/pulso@ulima.edu.pe
Phone number : 4376767 Anexes: 35340 - 35310



PULSO BURSÁTIL

LIMA

Stocks

Ticker	Currency	Price	1D*	5D*	30D*	YTD*	Frequency	Volume (US\$)	Beta	Dividend Yield (%)	Price Earning	Market Cap. (M US\$)	Economic Sector*	Index Weight
▼ ALICORC1 PE**	S/.	8.60	-1.60%	-0.58%	5.65%	17.81%	105.56%	449,271	0.73	1.63	19.32	2,257.74	Industrial	3.53%
▼ ATACOCB1 PE**	S/.	0.33	-0.30%	15.97%	28.46%	-16.50%	66.67%	69,072	#N/A	N/A	-	97.05	Mining	1.02%
- BACKUSI1 PE**	S/.	16.50	0.00%	3.06%	3.13%	3.13%	88.89%	3,304	0.40	3.35	2.76	9,509.40	Industrial	0.82%
▼ BAP PE**	US\$	193.60	-3.39%	1.95%	4.99%	22.38%	100.00%	1,290,388	1.11	1.93	-	15,384.77	Diverse	5.62%
▲ BVN PE**	US\$	12.37	0.41%	0.98%	6.27%	7.57%	105.56%	899,201	1.66	0.67	-	3,409.60	Mining	5.88%
▲ CASAGRC1 PE**	S/.	6.25	0.16%	0.81%	1.63%	-8.63%	105.56%	6,839	0.68	0.00	8.71	161.91	Agricultural	1.31%
▼ CONTINC1 PE**	S/.	3.93	-1.01%	0.26%	-1.80%	9.02%	94.44%	69,649	0.89	3.76	14.68	5,901.91	Finance	2.85%
- CORAREH1 PE**	S/.	0.51	0.00%	-3.77%	0.00%	4.08%	105.56%	41,178	1.03	6.30	8.65	245.87	Industrial	1.72%
- CPACASC1 PE**	S/.	7.50	0.00%	-1.45%	1.76%	20.04%	105.56%	328,710	0.76	4.76	28.36	983.54	Industrial	2.38%
- CVERDEC1 PE**	US\$	22.75	0.00%	3.13%	8.33%	19.05%	105.56%	34,728	1.03	0.00	17.65	7,963.77	Mining	5.25%
▼ ENGEPEC1 PE**	S/.	2.29	-0.43%	-2.55%	0.44%	-11.92%	72.22%	157,957	0.84	3.59	32.96	2,037.54	Public Services	1.44%
- ENDISPC1**	S/.	5.50	0.00%	-2.65%	1.85%	-10.71%	72.22%	20,298	0.87	3.47	11.83	1,080.11	Public Services	0.98%
▼ FERREYC1 PE**	S/.	1.81	-1.09%	-3.72%	0.56%	7.10%	105.56%	472,014	0.86	7.10	7.85	564.62	Diverse	4.90%
▼ GRAMONC1 PE**	S/.	2.10	-1.87%	-5.41%	0.00%	-55.32%	105.56%	114,826	2.69	0.00	82.24	426.29	Diverse	4.05%
▼ IFS PE**	US\$	33.80	-0.59%	0.15%	-0.59%	5.62%	94.44%	247,048	0.56	3.85	12.28	3,823.15	Diverse	7.22%
▼ INRETC1 PE**	US\$	18.50	-1.96%	-2.37%	6.75%	-4.54%	105.56%	254,986	1.00	1.05	22.38	1,901.94	Diverse	5.28%
▼ LUSURC1 PE**	S/.	11.80	-0.17%	-0.08%	-0.84%	-9.85%	100.00%	18,889	0.64	5.25	13.58	1,767.14	Public Services	1.81%
▼ MILPOC1 PE**	S/.	3.55	-1.39%	-6.58%	0.00%	3.80%	77.78%	237,401	1.23	0.00	8.18	1,446.66	Mining	1.56%
▼ MINSUR1 PE**	S/.	1.30	-1.52%	-1.52%	-2.26%	-10.34%	83.33%	147,596	1.59	0.00	14.04	1,152.63	Mining	3.09%
▲ PML PE**	US\$	0.13	0.76%	2.31%	9.92%	-3.62%	72.22%	12,836	0.85	0.00	-	34.33	Mining	2.12%
▼ RELAPAC1 PE**	S/.	0.21	-0.94%	-3.21%	-5.38%	-9.44%	105.56%	21,299	0.82	0.00	4.15	229.38	Industrial	2.12%
▼ SCCO PE**	US\$	38.61	-1.63%	-2.40%	7.16%	19.57%	100.00%	2,239	1.01	1.01	30.28	29,846.58	Mining	2.14%
- SIDERC1 PE**	S/.	0.33	0.00%	-7.50%	-4.86%	0.91%	50.00%	28,931	1.55	0.00	5.11	125.75	Industrial	1.43%
▲ TV PE**	US\$	1.04	0.97%	5.05%	4.00%	22.35%	94.44%	23,215	1.97	0.00	-	420.30	Mining	2.93%
▼ UNACEMC1 PE**	S/.	2.49	-0.40%	-1.97%	4.62%	-2.73%	100.00%	763,415	1.08	2.09	36.31	1,260.85	Industrial	3.00%
▼ VOLCABC1 PE**	S/.	0.83	-2.35%	-2.35%	0.00%	15.28%	105.56%	288,608	1.33	1.48	11.10	1,527.85	Mining	5.90%

Quantity of shares: 26

Source: Bloomberg, Economática

* Bloomberg Industry Classification System

** PER is used in the stock market and original currency of the instrument

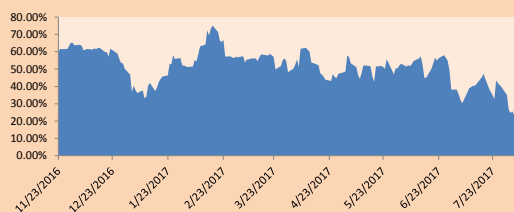
*Legend: Variation 1D: 1 Day; 5D: 5 Days, 1M: 1 Month; YTD: Var.% 12/31/16 to date

Sectorial Indices

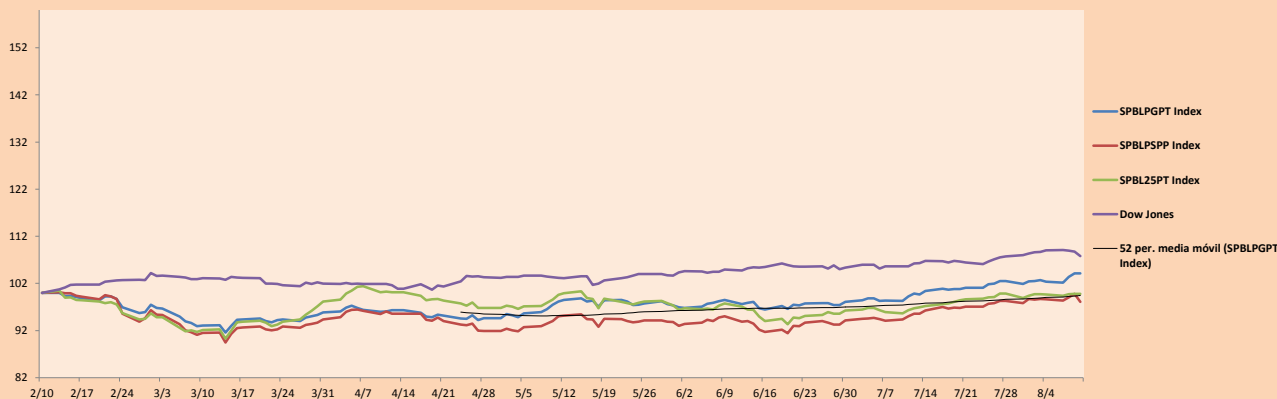
	Close	1D*	5D*	30D*	YTD*	Beta
- Mining Index	281.90	0.00%	-0.10%	6.37%	13.50%	1.38
- Consumer Index	771.60	0.00%	1.06%	6.79%	13.30%	0.45
- Industrial Index	197.33	0.00%	-1.99%	2.67%	-10.75%	1.22
- Banking and Financial Index	1,001.22	0.00%	5.05%	6.97%	22.67%	0.99
- Construction Index	240.87	0.00%	-1.81%	3.20%	-18.55%	1.42
- Services Index	440.59	0.00%	-1.05%	2.13%	-8.94%	0.25
- Juniors Index	20.91	0.00%	1.11%	1.80%	-25.48%	0.21
- Electric Index	430.12	0.00%	-1.05%	2.13%	-8.94%	0.25

*Legend: Variation 1D: 1 Day; 5D: 5 Days, 1M: 1 Month; YTD: Var.% 12/31/16 to date

Correlation Graph of Returns of Mining Index against Metallic Index of London (3 months)



Indices (6 months)



Source: Bloomberg

Capital Market Laboratory Coordinator: Economist Bruno Bellido Anicama

Support: Sebastián Butters, Ernesto Cossio, Kaori Olulo, Jairo Trujillo

e-mail: pulsobursatil@ulima.edu.pe

facebook: www.facebook.com/pulsobursatil.ul

Phone number : 4376767 Anexes: 35340 - 35310

The content of this document is just for informational purposes . The information and opinions expressed should not be consider as recommendations for future decisions .Under any circumstances, the Capital Market Laboratory of University of Lima will be responsible for the use of the statements in this document.

PULSO BURSÁTIL

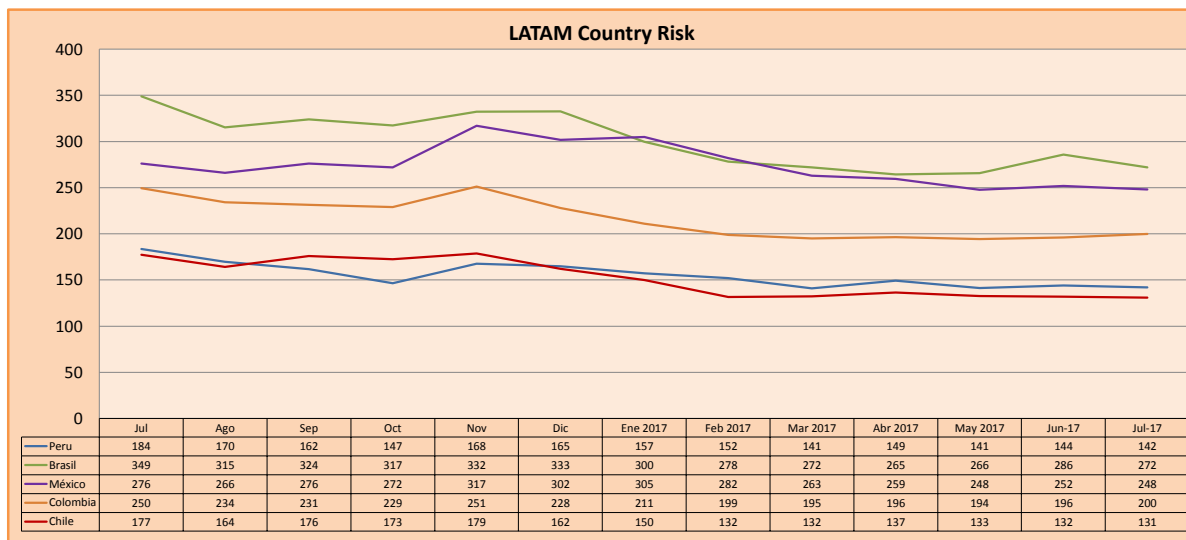
SOVEREIGN RATING

RISK RATINGS			
Moody's	S&P	Fitch	Prime
Aaa	AAA	AAA	High credit quality
Aa1	AA+	AA+	
Aa2	AA	AA	
Aa3	AA-	AA-	
A1	A+	A+	Medium-high grade, with low credit risk
A2	A	A	
A3	A-	A-	
Baa1	BBB+	BBB+	Moderate Credit Risk
Baa2	BBB	BBB	
Baa3	BBB-	BBB-	
Ba1	BB+	BB+	It has speculative elements and it is subject to substantial credit risk
Ba2	BB	BB	
Ba3	BB-	BB-	
B1	B+	B+	It is considered speculative and it has high credit risk
B2	B	B	
B3	B-	B-	
Caa1	CCC+		Bad credit conditions and it is subject to high credit risk
Caa2	CCC		
Caa3	CCC-	CCC	
Ca	CC		Very close to default or in default
	C		
C	D	DDD DD D	

Source: Bloomberg

Latin America Credit Rating			
Clasificadora de riesgo			
Country	Moody's	Fitch	S&P
Peru	A3		BBB+
Mexico	A3		BBB+
Venezuela	Caa3		CCC-
Brazil	Ba2		BB *-
Colombia	Baa2		BBB
Chile	Aa3		A+
Argentina	Ca		B
Panama	Baa2		BBB

Source: Bloomberg



Source: Bloomberg

Capital Market Laboratory Coordinator: Economist Bruno Bellido Anicama
Support: Sebastián Butters, Ernesto Cossio, Kaori Olulo, Jairo Trujillo
e-mail: pulsobursatil@ulima.edu.pe
facebook: www.facebook.com/pulsobursatil.ul
Phone number : 4376767 Anexes: 35340 - 35310

The content of this document is just for informational purposes. The information and opinions expressed should not be considered as recommendations for future decisions. Under any circumstances, the Capital Market Laboratory of University of Lima will be responsible for the use of the statements in this document.