

PULSO BURSÁTIL

Lima, november 14, 2019

MILA

Main Indexes	Close	1 D	5 D	1 M	YTD	Cap. Burs. (US\$ bill)
▲ IPSA (Chile)	4,498.52	1.96%	-3.73%	-12.34%	-11.89%	112.83
▲ IGPA (Chile)	22,434.13	1.70%	-4.09%	-13.22%	-13.55%	140.32
▼ IGBC (Colombia)	13,182.53	-0.45%	-2.23%	1.82%	18.30%	102.05
▼ COLCAP (Colombia)	1,615.44	-0.53%	-2.51%	1.55%	21.85%	99.90
▼ S&P/BVL (Perú)*	19,586.83	-0.66%	-2.75%	0.96%	1.22%	90.75
▼ S&P/BVL SEL (Perú)	506.74	-0.36%	-2.15%	0.34%	-1.09%	71.12
▼ S&P/BVL LIMA 25	24,079.86	-0.71%	-3.34%	-2.33%	-9.16%	85.36
▲ IPC (México)	43,199.69	0.22%	-2.10%	-0.25%	3.73%	277.69
▼ S&P MILA 40	554.67	-2.55%	-7.70%	-10.06%	-8.87%	234.20

Equity

Largest gains	Exchange	Amt.	Price	▲%	Largest losses	Exchange	Amt.	Price	▼%
SALFACORP	Santia.	CLP	431.93	7.98	MOROCCI1	Lima	PEN	0.82	-15.46
COPEC	Santia.	CLP	6548.00	4.52	TELEFBC1	Lima	PEN	0.60	-10.45
MINEROS	Colomb.	COP	3245.00	4.34	CASAGRC1	Lima	PEN	2.51	-6.69
WMT	Lima	USD	123.10	4.15	ATACOB1	Lima	PEN	0.15	-2.60

Per Turnover

	Exchange	Amount (US\$)
FALABELLA	Santia.	57,605,502
BCI	Santia.	20,090,745
CHILE	Santia.	17,296,635
	Santia.	12,658,745
BSANTANDER	Santia.	10,020,462

Per Volume

	Exchange	Volume
BSANTANDER	Santia.	178,849,587
CHILE	Santia.	161,894,943
VAPORES	Santia.	155,007,767
COLBUN	Santia.	45,466,206
AGUAS-A	Santia.	19,392,291

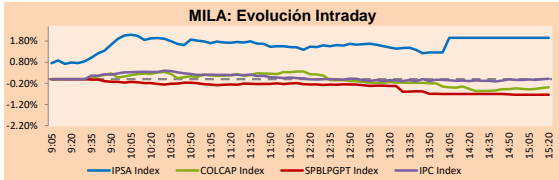
MILA

Peru: The General BVL index ended today's session with a negative result of -0.66%. The index maintains a positive trend in local currency of + 0.96%, while the adjusted yield in dollars amounts to + 0.46%. Then, the S&P / BVL Peru SEL varied by -0.36%, while the S & P / BVL LIMA 25 varied by -0.71%. The PEN spot reached 5 / 3.3875. Headline: Annualized fiscal deficit remained at 1.6% in October.

Chile: The IPSA index closed today with a positive yield of + 1.96%. The sectors with the best results were Energy (+ 4.52%) and Materials (+ 3.32%). On the other hand, the values with the highest yields were Salfacor SA (+ 7.98%) and Itau CorpBanca SA (+ 7.63%). Headline: Dollar closes over 800 CLP, despite the measures of the Central Bank.

Colombia: The COLCAP index closed today with a negative yield of -0.64%. The sectors with the worst results were Public Services (-1.88%) and Materials (-0.85%). On the other hand, the values with the lowest yield were Cementos Argos SA (-5.27%) and Interconexión Eléctrica SA ESP (-3.85%). Headline: Colombia's economic growth was 3.3% in the third quarter.

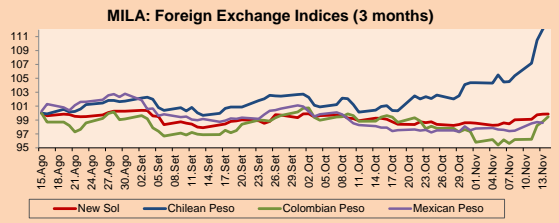
Mexico: The MEXBOL index closed today with a positive yield of + 0.21%. The sectors with the best results were Communication Services (+ 0.69%) and Basic Consumer Products (+ 0.61%). On the other hand, the values with the best yields were Grupo Carso SAB de CV (+ 2.11%) and Walmart de México SAB de CV (+ 1.92%). Headline: Central Bank reduces by 25 basis points, the third in a row.



Source: Bloomberg

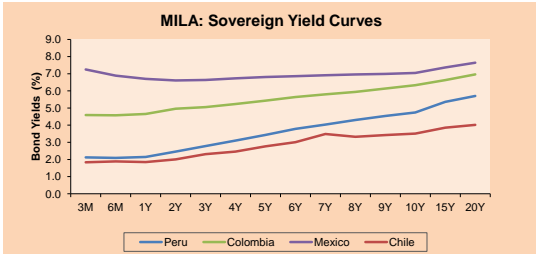
Currency	Price	1D*	5D*	30 D*	YTD*
▼ New Sol (PEN)	3,3875	-0.03%	1.30%	0.60%	0.55%
▲ Chilean Peso (CLP)	803.68	1.09%	8.37%	12.21%	15.87%
▲ Colombian Peso (COP)	3,453.90	0.73%	4.04%	0.06%	6.28%
▼ Mexican Peso (MXN)	19.33	-0.12%	1.04%	0.48%	-1.62%

*Legend: Variation 1D: 1 day, 5D: 5 days, 1M: 1 Month, YTD: Var%12/31/18 to date

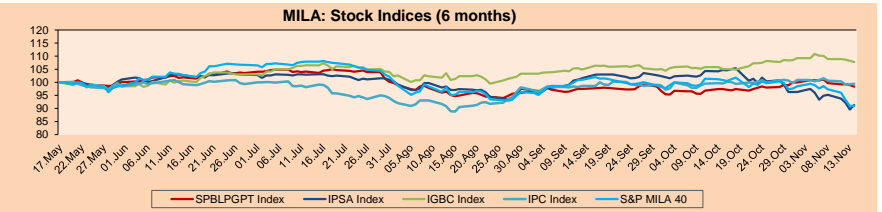


Base: 15/08/19=100
Source: Bloomberg

Fixed Income	Bid Yield (%)	Ask Yield (%)	Duration
PERU 4.125 08/25/2027	USD 111.47	2.52	2.47 6.68
PERU 7.35 07/21/25	USD 126.01	2.44	2.39 4.72
PERU 8.75 11/21/33	USD 163.96	3.10	3.08 9.27
PERU 6.55 03/14/37	USD 144.453	3.20	3.18 11.16
PERU 5.625 11/18/2050	USD 144.075	3.34	3.32 17.18
CHILE 2.25 10/30/22	USD 100.101	2.28	2.15 2.84
CHILE 3.875 08/05/20	USD 101.277	2.28	1.84 0.71
CHILE 3.625 10/30/2042	USD 107.399	3.18	3.16 15.98
COLOM 11.75 02/25/20	USD 102.665	2.37	1.15 0.28
COLOM 11.85 03/09/28	USD 161.417	3.36	3.29 5.98
COLOM 10.375 01/28/33	USD 160.95	4.35	4.21 8.37
COLOM 7.375 09/18/37	USD 140.333	4.17	4.13 11.16
MEX 4 10/02/23	USD 105.797	2.46	2.39 3.58
MEX5.55 01/45	USD 120.938	4.204	4.186 14.52



Source: Bloomberg

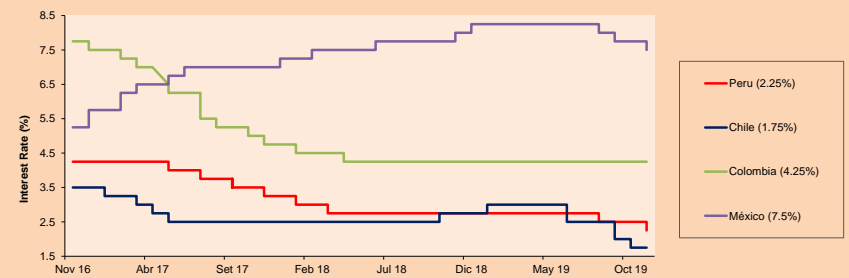


Base: 20/05/19=100
Source: Bloomberg

ETFs

	Curr.	Close	1D	5D	30 D	YTD	Exchange
▼ iShares MSCI All Peru Caped Index Fund	USD	34.225	-0.28%	-3.62%	-1.14%	-1.80%	NYSE Arca
▼ Global X MSCI Colombia	USD	29.86	-2.86%	-11.24%	-22.98%	-26.51%	Cboe BZX
▲ iShares MSCI Mexico Capped	USD	12,9098	-0.60%	-5.18%	0.50%	17.88%	NYSE Arca
▲ iShares MSCI Emerging Markets	USD	44.075	0.67%	-3.03%	-0.37%	9.20%	NYSE Arca
▲ Vanguard FTSE Emerging Markets	USD	42.775	0.04%	-2.96%	2.04%	10.35%	NYSE Arca
▲ iShares Core MSCI Emerging Markets	USD	42	-0.05%	-2.87%	1.77%	12.62%	NYSE Arca
▲ iShares JP Morgan Emerging Markets Bonds	USD	51.41	0.10%	-2.85%	2.25%	10.13%	NYSE Arca
▲ Morgan Stanley Emerging Markets Domestic	USD	58.11	0.00%	-2.39%	0.43%	5.15%	Cboe BZX
	USD	6.875	0.22%	-1.22%	0.81%	21.09%	New York

MILA: Policy Rate



Source: Bloomberg

Capital Market Laboratory Coordinator: Economist Bruno Bellido Anicama
Collaboration: Juan Carlos Figueroa, Alonso Butters, Jeanpierre León y Manuel Muñoz Najara
e-mail: pulsobursatil@ulima.edu.pe
facebook: www.facebook.com/pulsobursatil.ul
Phone number : 4376767 Annex: 35340



PULSO BURSÁTIL

WORLD

Main Indices	Close	1 D*	5 D*	1 M*	YTD*	Market Cap. (US\$ Mill.)
▼ Dow Jones (USA)	27,781.96	-0.01%	0.39%	3.71%	19.10%	7,830,207
▲ Standard & Poor's 500 (USA)	3,097.78	0.13%	0.42%	4.45%	23.59%	26,652,016
▲ NASDAQ Composite (USA)	8,479.02	-0.04%	0.53%	5.35%	27.79%	13,168,074
▼ Stoxx EUROPE 600 (Europe)	404.41	-0.36%	-0.53%	3.78%	19.77%	9,930,054
▼ DAX (Germany)	13,180.23	-0.38%	-0.82%	5.56%	24.83%	1,117,116
▼ FTSE 100 (United Kingdom)	7,292.78	-0.80%	-1.53%	1.10%	8.39%	1,522,303
▼ CAC 40 (France)	5,901.08	-0.10%	-0.17%	4.57%	24.74%	1,649,567
▼ IBEX 35 (Spain)	9,173.30	-0.23%	-2.90%	-0.79%	7.42%	523,089
▼ MSCI AC Asia Pacific Index	164.28	-0.86%	-1.38%	4.09%	11.98%	18,751,819
▼ HANG SENG (Hong Kong)	26,323.69	-0.93%	-5.47%	-0.68%	1.85%	2,410,167
▲ SHANGHAI SEC Comp. (China)	2,908.87	0.16%	-2.31%	-2.71%	16.88%	4,831,445
▲ NIKKEI 225 (Japan)	23,141.55	-0.76%	-0.81%	2.13%	15.62%	3,508,951
▲ BOVESPA (Brazil)	106,530.50	0.44%	-2.79%	2.13%	21.20%	767,612
▲ Merval (Argentina)	31,019.69	-4.08%	-13.52%	-2.45%	2.40%	18,781

*Legend: Variation 1D: 1 Day; 5D: 5 Days; 1M: 1 Month; YTD: Var.% 12/31/18 to date

Equity

Alemania (Acciones del DAX Index)

Largest gains	Curr.	Price	▲ %	Exchange	Largest losses	Curr.	Price	▼ %	Exchange
VNA GY	EUR	47.04	0.88	Xetra	MRK GY	EUR	106.15	-3.28	Xetra
EOAN GY	EUR	9.149	0.78	Xetra	RWE GY	EUR	25.79	-2.46	Xetra
1COV GY	EUR	44.85	0.74	Xetra	DBK GY	EUR	6.553	-1.46	Xetra
HEI GY	EUR	65.26	0.68	Xetra	IFX GY	EUR	19.41	-1.07	Xetra

Europe (Stocks from STOXX EUROPE 600)

Largest gains	Curr.	Price	▲ %	Exchange	Largest losses	Curr.	Price	▼ %	Exchange
VPK NA	EUR	50.92	4.75	EN Amsterdam	SDF GY	EUR	11.985	-5.41	Xetra
SGRE SQ	EUR	13.385	4.24	Soc.Bol SIBIE	NOKIA FH	EUR	3.034	-4.80	Helsinki
HO FP	EUR	88.06	3.50	EN Paris	ATC NA	EUR	5.164	-4.78	EN Amsterdam
BRBY LN	Gbp	2129	3.35	Londres	III LN	Gbp	1073.5	-4.58	Londres

Global Overview:

United States:

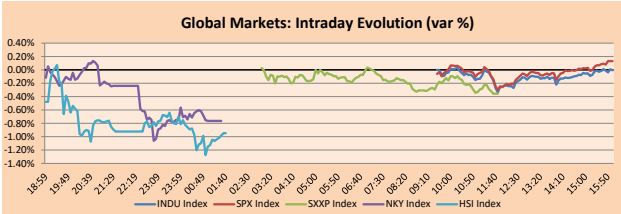
The US market closed today with negative variations in its main indexes, S&P 500 -0.005% and DJI -0.08%. On the other hand, the president of the Federal Reserve, Jerome Powell, said today that the risk of the US economy facing a dramatic crisis is remote, partly because the current expansion is distinguished from not having pockets of an overheated activity. "The US economy is the star economy these days," Powell told the House of Representatives Budget Commission. "We are growing at 2%, right in the range, more than any other developed economy is expanding. There is no reason for that not to continue." In other news, the president of the United States, Donald Trump, proposed his Turkish counterpart, Recep Tayyip Erdogan, a commercial agreement for USD 100,000 million. In addition, he proposed a way to avoid sanctions for the purchase of the S-400 anti-aircraft system from Russia. The leader made this offer in a letter sent to his Turkish counterpart last week. It is speculated that Trump's proposal could unleash the anger of a part of the House of Representatives deputies, who last month backed Turkey's restrictions on its military operation in Syria.

Europe:

European markets ended down today, after trade talks stalled again. Trade negotiations between the US and China came to a standstill after the US asked for greater requirements from China regarding intellectual property protection and a cessation of the forced transfer of technology in exchange for lower tariffs on Chinese goods. In relation to Europe, the German GDP increased by 0.1% in the third quarter, leaving behind a possible contraction of -0.1% and a technical recession. GDP growth in the second quarter was revised down from -0.1% to -0.2%. In general, the eurozone economy grew by 0.2%, in line with expectations and marking an increase of 1.2% year-on-year. On the other hand, a survey indicated that the ruling conservative party of British Prime Minister Boris Johnson obtained a 10-point advantage over the main opposition Labour Party, before the December 12 elections. Thus, the STOXX 600 -0.36%, FTSE 100 of Great Britain -0.80%, DAX of Germany -0.38%, CAC of France -0.36% and FTSE MIB of Italy -0.41% closed down, among other indices.

Asia:

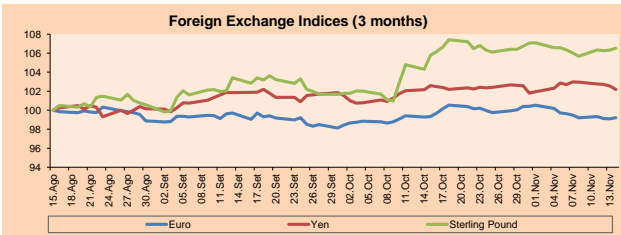
The Asian market ended the day with mixed results due to the weak growth of Chinese industry compared to the previous year. In October, the Chinese industry grew 4.7% this year, lower than expected. Likewise, an agreement would be reached between both powers to reduce the commercial conflict but the tariffs imposed by both nations would not be eliminated in its entirety. The main Asia / Pacific indexes had the following results: Nikkei down -0.76%, Hang Seng down -0.93% and ASX 200 up +0.55%. The Fed will maintain the reference rate and will only change it if the economies require an immediate adjustment. In other corporate news, China's securities regulator is investigating one of the richest men in the country for alleged violation of disclosure rules as director of surveillance camera giant Hikvision. The Japanese company, Yahoo, would be receiving financing to launch a new mobile messaging application. Finally, the companies with the best results of the day were Z Holdings Corp. (+16.93%) and Yamaha Motor Co Ltd. (+4.79%) by the Nikkei 225 index of Japan.



Source: Bloomberg

Currency	Price	1 D*	5 D*	1 M*	YTD*
▲ Euro	1.1020	0.12%	-0.27%	-0.12%	-3.90%
▲ Yen	108.4500	-0.34%	-0.76%	-0.38%	-1.13%
▲ Sterling Pound	1.2878	0.21%	0.48%	0.71%	0.97%
▼ Yuan	7.0208	-0.04%	0.61%	-0.86%	2.07%
▼ Hong Kong Dollar	7.8273	-0.01%	0.01%	-0.23%	-0.06%
▲ Brazilian Real	4.1892	0.30%	2.15%	0.21%	8.12%
▼ Argentine Peso	59.6761	-0.08%	0.12%	2.41%	58.43%

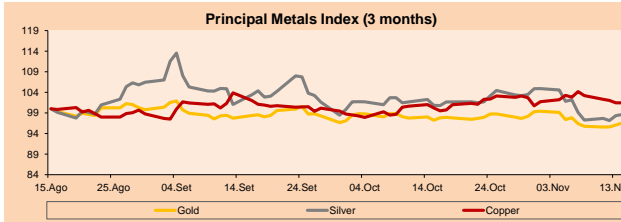
*Legend: Variation 1D: 1 Day; 5D: 5 Days; 1M: 1 Month; YTD: Var.% 12/31/18 to date



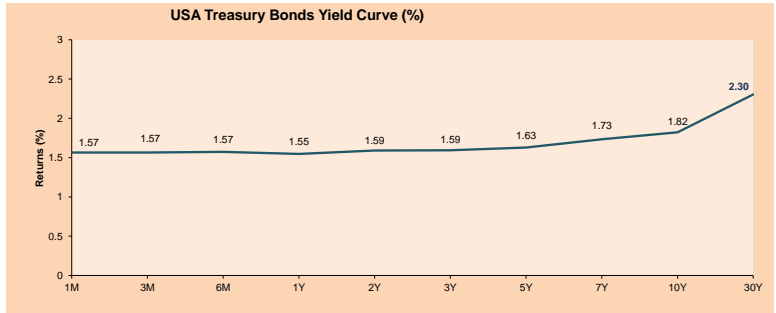
Base: 15/08/19=100
Source: Bloomberg

Commodities	Close	1 D*	5 D*	1 M*	YTD*
▲ Oro (US\$ Oz. T) (LME)	1,470.78	0.49%	0.16%	-0.89%	14.69%
▲ Plata (US\$ Oz. T) (LME)	17.02	0.29%	-0.49%	-2.20%	9.87%
▲ Cobres (US\$ TM) (LME)	5,610.50	0.00%	-2.61%	1.23%	-2.33%
▲ Zinc (US\$ TM) (LME)	2,457.00	0.00%	-2.92%	-0.05%	-2.44%
▼ Petróleo WTI (US\$ Barril) (NYM)	56.91	-0.37%	-0.42%	7.62%	17.63%
▼ Estioma (US\$ TM) (LME)	15,991.00	0.00%	-3.41%	-3.93%	-18.08%
▼ Plomo (US\$ TM) (LME)	2,034.00	0.00%	-3.78%	-5.15%	1.35%
▼ Azúcar #11 (US\$ Libra) (NYB-ICE)	12.81	-0.31%	3.39%	1.75%	-2.59%
▲ Cacao (US\$ TM) (NYB-ICE)	2,669.00	0.53%	8.94%	5.00%	7.97%
▲ Café Arabica (US\$ TM) (NYB-ICE)	111.50	-0.98%	3.12%	13.83%	-5.63%

*Legend: Variación 1D: 1 Día; 5D: 5 Días; 1M: 1 Mes; YTD: Var.% 31/12/17 a la fecha



Base: 15/08/19=100
Source: Bloomberg



Source: Bloomberg

Capital Market Laboratory Coordinator: Economist Bruno Bellido Anicama
Collaboration: Juan Carlos Figueroa, Alonso Butters, Jeanpierre León y Manuel Muñoz Najar
e-mail: pulso@ulima.edu.pe
facebook: www.facebook.com/pulso@ulima.edu.pe
Phone number: 4376767 Anexas: 35340

PULSO BURSÁTIL

LIMA

Stocks

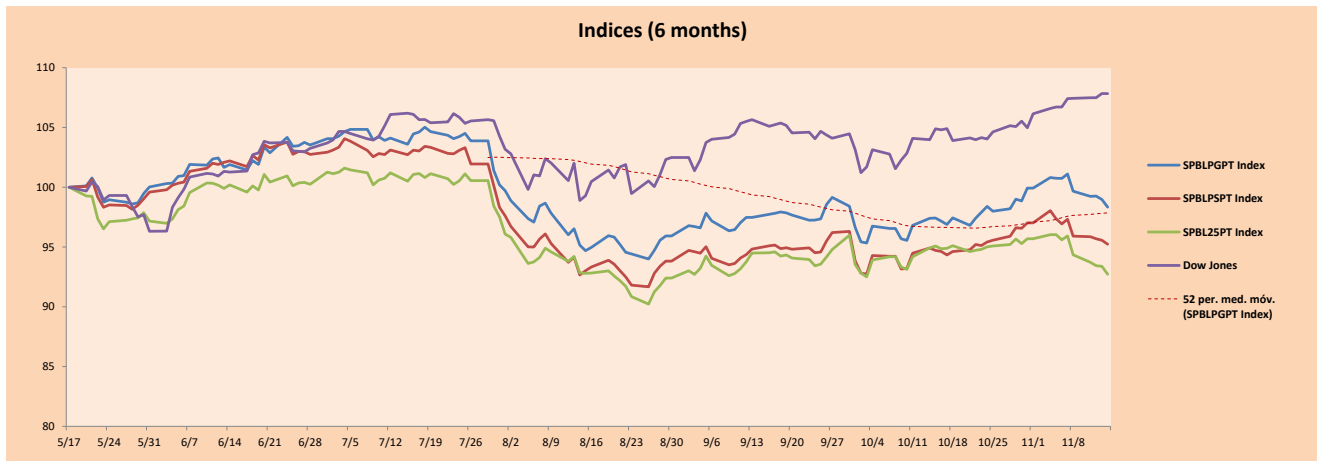
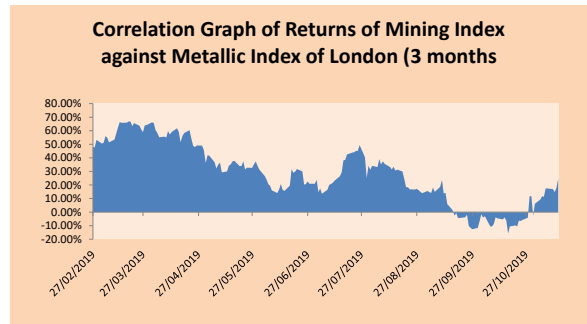
Ticker	Currency	Price	1D*	5D*	30D*	YTD*	Frequency	Volume (US\$)	Beta	Dividend Yield (%)	Price Earning	Market Cap. (M US\$)	Economic Sector*	Index Weight
- ALICORC1 PE**	S/.	9.00	0.00%	-2.17%	-3.23%	-7.53%	100.00%	462,472	0.63	2.67	17.30	2,263.93	Industrial	3.53%
▼ ATACOB1 PE**	S/.	0.14	-6.49%	-15.29%	-28.00%	-55.28%	63.16%	4,617	#N/A N/A	0.00	3.86	151.80	Mining	1.02%
▲ BACKUS1 PE**	S/.	25.00	0.52%	0.00%	4.17%	28.05%	78.95%	909,225	0.34	5.92	8.15	9,827.16	Industrial	0.82%
▲ BAP PE**	US\$	204.00	0.15%	-5.60%	-1.74%	-4.36%	100.00%	62,593	1.28	4.13	-	16,271.34	Diverse	5.82%
▼ BVN PE**	US\$	14.77	-2.19%	-4.71%	-4.16%	-7.92%	94.74%	71,044	1.52	0.78	-	4,071.12	Mining	5.88%
▼ CASAGRC1 PE**	S/.	2.51	-6.69%	-16.33%	-17.16%	-37.93%	94.74%	8,724	0.60	0.50	14.73	62.41	Agricultural	1.31%
- BBVAC1 PE**	S/.	3.44	0.00%	-0.29%	4.88%	-0.86%	94.74%	62,629	0.53	4.01	12.62	5,976.42	Finance	2.85%
- CORARE1 PE**	S/.	0.81	0.00%	-1.22%	8.00%	21.99%	100.00%	36,432	0.89	7.57	3.94	334.43	Industrial	1.72%
- CPACASC1 PE**	S/.	6.50	0.00%	-1.52%	1.56%	0.78%	94.74%	50,300	0.67	5.80	36.11	818.64	Industrial	2.38%
▼ CVERDEC1 PE**	US\$	17.50	-1.13%	-6.27%	-1.69%	-14.36%	94.74%	95,616	0.84	2.45	-	6,125.98	Mining	5.25%
▲ ENGEPEC1 PE**	S/.	2.37	0.08%	-1.13%	-3.15%	28.52%	84.21%	6,335	0.74	3.76	13.26	1,986.08	Public Services	1.44%
▲ ENDISPC1**	S/.	7.20	0.99%	0.29%	0.98%	40.71%	84.21%	129,229	0.63	3.20	11.28	1,357.24	Public Services	0.98%
- FERREYC1 PE**	S/.	2.10	0.00%	-2.33%	1.45%	-10.87%	100.00%	145,391	0.91	8.37	7.89	604.85	Diverse	4.90%
▼ GRAMONC1 PE**	S/.	1.36	-3.55%	-5.56%	-15.53%	-31.66%	94.74%	34,267	0.81	0.00	-	350.05	Diverse	4.05%
▼ IFS PE**	US\$	39.98	-1.16%	-3.66%	1.99%	-1.14%	100.00%	206,354	0.97	4.38	11.52	4,615.60	Diverse	7.22%
- INRETC1 PE**	US\$	33.40	0.00%	-1.47%	-8.49%	19.07%	100.00%	117,638	0.70	1.02	28.07	3,433.76	Diverse	5.28%
- LUSURC1 PE**	S/.	23.00	0.00%	-0.52%	3.60%	119.82%	100.00%	445,497	0.63	3.65	18.41	3,306.24	Public Services	1.81%
- MINSUR1 PE**	S/.	1.48	0.00%	-3.27%	2.78%	12.12%	78.95%	61,040	1.33	5.12	2.71	1,259.58	Mining	3.09%
- PML PE**	US\$	0.08	0.00%	-5.06%	-21.05%	-57.14%	31.58%	2,588	1.31	0.00	-	19.79	Mining	2.12%
▼ RELAPAC1 PE**	S/.	0.10	0.00%	-4.95%	-11.11%	-23.81%	100.00%	38,040	0.86	0.00	-	235.76	Industrial	2.12%
▼ SCCO PE**	US\$	37.10	-1.07%	-2.62%	8.68%	28.67%	89.47%	13,402	1.29	5.51	19.53	28,680.48	Mining	2.14%
▼ SIDERC1 PE**	S/.	0.84	-1.54%	-4.48%	1.59%	32.51%	94.74%	17,948	1.40	15.95	7.27	231.99	Industrial	1.43%
▲ TV PE**	US\$	0.16	1.29%	-7.65%	-1.88%	-47.14%	78.95%	54,213	1.66	0.00	-	127.82	Mining	2.93%
▼ UNACEMC1 PE**	S/.	1.98	-1.00%	-6.03%	-5.13%	-22.14%	94.74%	92,359	0.61	2.63	10.84	1,062.70	Industrial	3.00%
▼ VOLCABC1 PE**	S/.	0.37	-3.95%	-8.75%	-16.48%	-48.59%	100.00%	99,465	1.45	0.00	-	1,946.09	Mining	5.90%
- NEXAPEC1 PE**	S/.	3.40	0.00%	-1.45%	0.00%	-7.38%	57.89%	6,022	1.11	0.00	32.44	1,325.43	Mining	1.56%

Quantity of shares: 26
Source: Bloomberg, Económica
* Bloomberg Industry Classification System
** PER is used in the stock market and original currency of the instrument
*Legend: Variation 1D: 1 Day; 5D: 5 Days; 1M: 1 Month; YTD: Var.% 12/31/18 to date

Sectorial Indices

	Close	1D*	5D*	30D*	YTD*	Beta
▼ Mining Index	285.09	-1.61%	-2.89%	4.99%	0.09%	1.43
▲ Consumer Index	1,078.60	0.01%	-1.14%	-4.31%	7.26%	0.38
▲ Industrial Index	196.83	-0.73%	-3.43%	-2.61%	-13.25%	0.60
▲ Banking and Financial Index	1,159.10	0.02%	-4.11%	-0.75%	-3.41%	1.20
▲ Construction Index	211.51	-1.06%	-3.90%	-4.19%	-13.98%	0.46
▲ Services Index	624.26	0.54%	0.27%	1.92%	57.00%	0.20
▼ Juniors Index	16.64	-0.06%	-0.60%	-2.18%	-43.48%	0.25
▲ Electric Index	609.44	0.54%	0.27%	1.92%	57.00%	0.20

*Legend: Variation 1D: 1 Day; 5D: 5 Days; 1M: 1 Month; YTD: Var.% 12/31/18 to date



Capital Market Laboratory Coordinador: Economist Bruno Bellido Anicama
Collaboration: Juan Carlos Figueroa, Alonso Butter, Jeanpiere León y Manuel Muñoz Najjar
e-mail: pulsobursatil@ulima.edu.pe
facebook: www.facebook.com/pulsobursatil.ul
Phone number : 4376767 Annex: 35340

The content of this document is just for informational purposes. The information and opinions expressed should not be consider as recommendations for future decisions. Under any circumstances, the Capital Market Laboratory of University of Lima will be responsible for the use of the statements in this document.

PULSO BURSÁTIL

SOVEREIGN RATING

RISK RATINGS

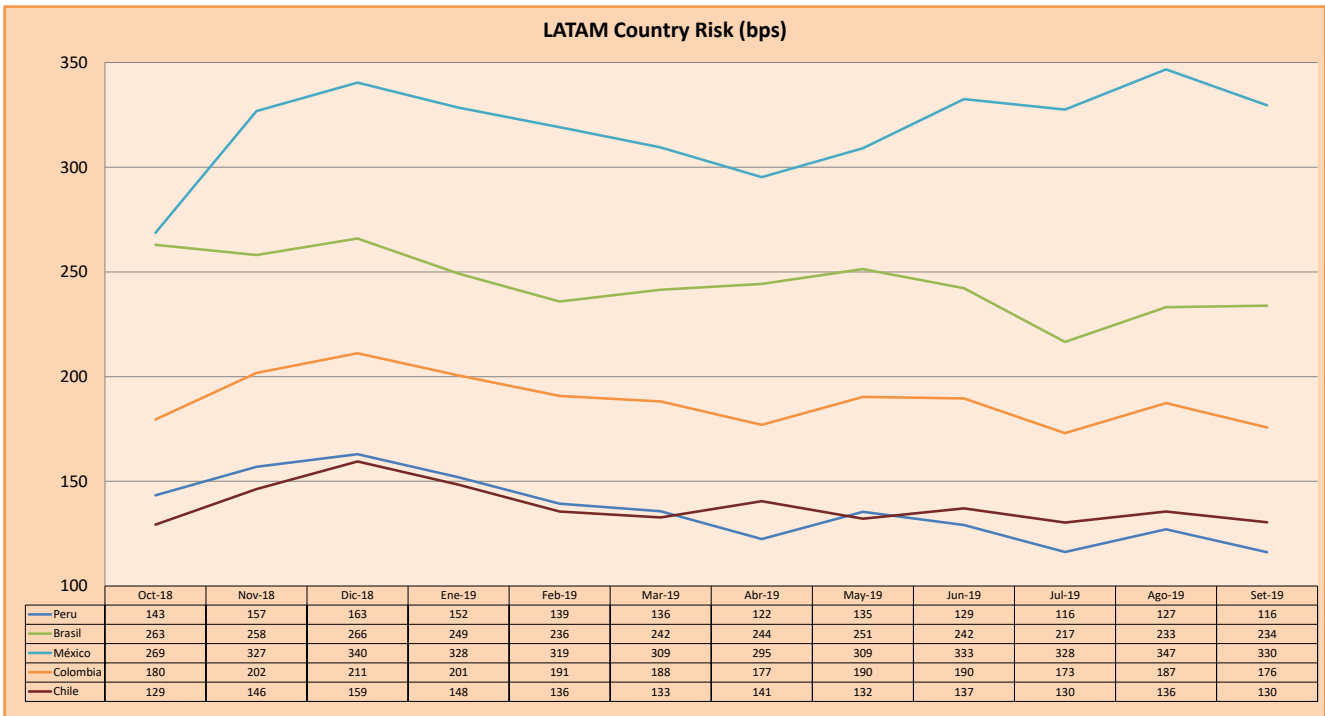
Moody's	S&P	Fitch		
Aaa	AAA	AAA	Prime	
Aa1	AA+	AA+	High credit quality	
Aa2	AA	AA		
Aa3	AA-	AA-		
A1	A+	A+	Medium-high grade, with low credit risk	
A2	A	A		
A3	A-	A-		
Baa1	BBB+	BBB+	Moderate Credit Risk	
Baa2	BBB	BBB		
Baa3	BBB-	BBB-		
Ba1	BB+	BB+	It has speculative elements and it is subject to substantial credit risk	
Ba2	BB	BB		
Ba3	BB-	BB-		
B1	B+	B+	It is considered speculative and it has high credit risk	
B2	B	B		
B3	B-	B-		
Caa1	CCC+	CCC	Bad credit conditions and it is subject to high credit risk	
Caa2	CCC			
Caa3	CCC-			
Ca	C	DDD	Very close to default or in default	
C	D			DD
				D

Source: Bloomberg

Latin America Credit Rating			
Clasificadora de riesgo			
Country	Moody's	Fitch	S&P
Peru	A3	BBB+	BBB+
Mexico	A3	BBB	BBB+
Venezuela	C	WD	SD
Brazil	Ba2	BB-	BB-
Colombia	Baa2	BBB	BBB-
Chile	A1	A	A+
Argentina	Caa2 *	CC	CCC-
Panama	Baa1	BBB	BBB+

Source: Bloomberg

LATAM Country Risk (bps)



Source: BCRP

Capital Market Laboratory Coordinator: Economist Bruno Bellido Anicama
 Support: Juan Carlos Figueroa, Alonso Butters, Jeanpiere León y Manuel Muñoz Najara
 e-mail: pulsobursatil@ulima.edu.pe
 facebook: www.facebook.com/pulsobursatil.ul
 Phone number : 4376767 Annex: 35340

The content of this document is just for informational purposes. The information and opinions expressed should not be considered as recommendations for future decisions. Under any circumstances, the Capital Market Laboratory of University of Lima will be responsible for the use of the statements in this document.