



# PULSO BURSÁTIL

Lima, January 7, 2020

## MILA

Main Indices	Close	1 D	5 D	1 M	YTD	Market Cap. (US\$ bill)
▲ IPSA (Chile)	4,913.36	0.59%	5.23%	4.01%	5.21%	130.04
▲ IGPA (Chile)	24,499.85	0.65%	4.80%	3.99%	4.73%	165.74
▼ COLCAP (Colombia)	1,663.83	-0.76%	0.24%	3.24%	0.08%	110.25
▼ S&P/BVL (Perú)*	20,475.28	-0.45%	-0.54%	3.02%	-0.25%	98.23
▼ S&P/BVL SEL (Perú)	535.67	-0.27%	0.36%	4.79%	0.80%	76.95
▲ S&P/BVL LIMA 25	26,291.33	0.71%	1.76%	9.24%	2.09%	91.73
▲ IPC (México)	44,157.81	-0.76%	1.15%	5.29%	1.42%	292.25
▼ S&P MILA 40	610.99	-0.12%	1.21%	5.95%	1.31%	258.22

\* Market Cap. Of the last price Legend: Variation 1D: 1 day; 5D: 5 days; 1M: 1 Month; YTD: Var%12/31/18 to date

### Equity

Largest gains	Exchange	Amt.	Price	▲ %	Largest losses	Exchange	Amt.	Price	▼ %
MOROCCO1	Lima	PEN	1.00	9.89	DNT	Lima	USD	0.03	-3.85
VOLCABC1	Lima	PEN	0.53	7.72	CASAGRC1	Lima	PEN	3.00	-3.23
ORO BLANCO	Santia.	CLP	2.66	6.03	BOGOTA	Colomb.	COP	86000.00	-3.13
RIPLEY	Santia.	CLP	390.00	5.12	CNEC	Colomb.	COP	11620.00	-2.70

### Per Turnover

	Exchange	Amount (US\$)
CMPC	Santia.	16,574,571
BSANTANDER	Santia.	11,750,744
COPEC	Santia.	9,870,815
SOM-B	Santia.	9,773,866
CHILE	Santia.	7,884,474

### Per Volume

	Exchange	Volume
BSANTANDER	Santia.	196,399,844
CHILE	Santia.	70,458,290
VAPORES	Santia.	35,068,409
VOLCABC1	Lima	24,680,952
NORTEGRAN	Santia.	23,600,000

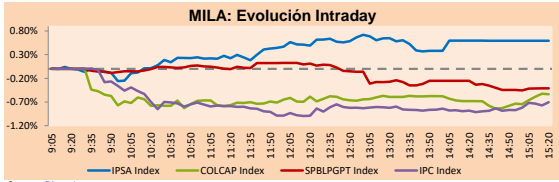
### MILA

Peru: The general BVL index ended today's session with a negative result of -0.45%. The index maintains a negative trend in local currency of -0.25%, while the adjusted yield in dollars amounts to -0.40%. Then, the S&P / BVL Peru SEL varied by -0.27%, while the S&P / BVL LIMA 25 rose +0.71%. The spot affected PEN S / 3.3200. Headline: Peru's tax collection consolidates its recovery in 2019 by growing 3.7%

Chile: The IPSA index closed today with a positive yield of +0.59%. The sectors with the best results were Energy (+2.65%) and Non-basic consumer products (+2.20%). On the other hand, the values that rose the most were Ripley Corporación SA (+4.47%) and Salfacor SA (+3.48%). Headline: Chile's economy falls 3.3% in November, impacted by massive protests

Colombia: The COLCAP index closed today with a negative return of -0.76%. The sectors with the lowest results were Industrial (-3.30%) and Public Services (-1.01%). On the other hand, the values with the best returns of the day were Avianca Holding SA (-3.30%) and Banco de Bogotá SA (-3.13%). Headline: Colombia closes 2019 with inflation of 3.80%

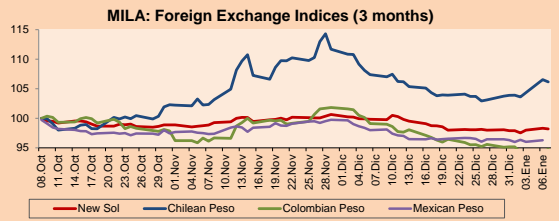
Mexico: The MEXBOL index closed the day today with a negative return of -0.76%. The sectors with the worst results were Industrial (-1.80%) and Communication Services (-1.50%). On the other hand, the values with the yields of the producers were Mexichem SAB de CV (-3.60%) and Megacable Holdings SAB de CV (-3.09%) Headline: Banxico affected reserves for 5,957 million dollars; exchange appreciation helped.



Source: Bloomberg

Currency	Price	1D*	5D*	30 D*	YTD*
▼ New Sol (PEN)	3,3216	-0.12%	0.28%	-1.65%	0.28%
▼ Chilean Peso (CLP)	769.27	-0.37%	2.18%	-1.16%	2.18%
▲ Colombian Peso (COP)	3,273.52	0.84%	-0.42%	-4.37%	-0.42%
▲ Mexican Peso (MXN)	18.89	0.28%	-0.17%	-2.13%	-0.17%

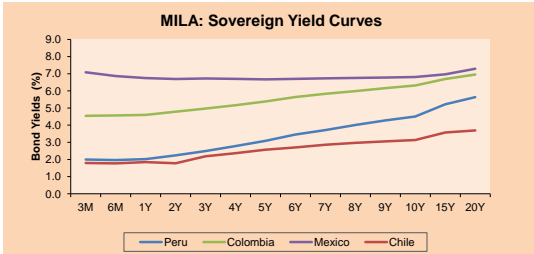
\* Legend: Variation 1D: 1 day; 5D: 5 days; 1M: 1 Month; YTD: Var%12/31/18 to date



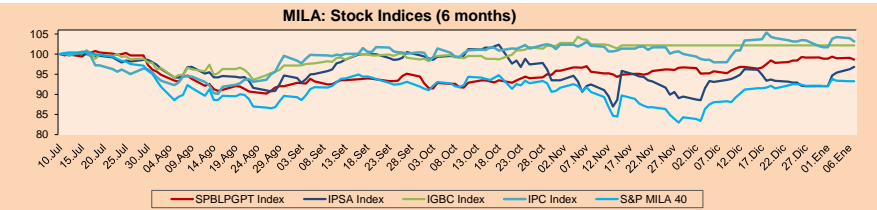
Base: 08/10/19=100 Source: Bloomberg

### Fixed Income

Instrument	Currency	Price	Bid Yield (%)	Ask Yield (%)	Duration
PERU 4.125 08/25/2027	#N/A Requesting D	112.67	2.33	2.28	6.55
PERU 7.35 07/21/25	USD	126.608	2.25	2.18	4.59
PERU 8.75 11/21/33	USD	165.72	2.96	2.93	9.44
PERU 6.55 03/14/37	USD	147.019	3.04	3.01	11.11
PERU 5.625 11/18/2050	USD	146.873	3.23	3.21	17.59
CHILE 2.25 10/30/22	USD	100.554	2.11	1.98	2.70
CHILE 3.875 08/05/20	USD	101.147	2.13	1.57	0.56
CHILE 3.625 10/30/2042	#N/A Requesting D	108.441	3.12	3.10	15.92
COLOM 11.75 02/25/20	USD	101.401	1.54	-0.05	0.13
COLOM 11.85 03/09/28	USD	162.522	3.15	3.09	6.85
COLOM 10.375 01/28/33	USD	161.546	4.25	4.15	8.27
COLOM 7.375 09/18/37	USD	142.701	4.00	3.98	11.11
COLOM 6.125 01/18/41	USD	129.971	4.01	3.99	12.82
MEX 4 10/02/23	USD	105.835	2.40	2.31	3.44
MEX5.55 01/45	USD	123.646	4.049	4.03	14.55



Source: Bloomberg

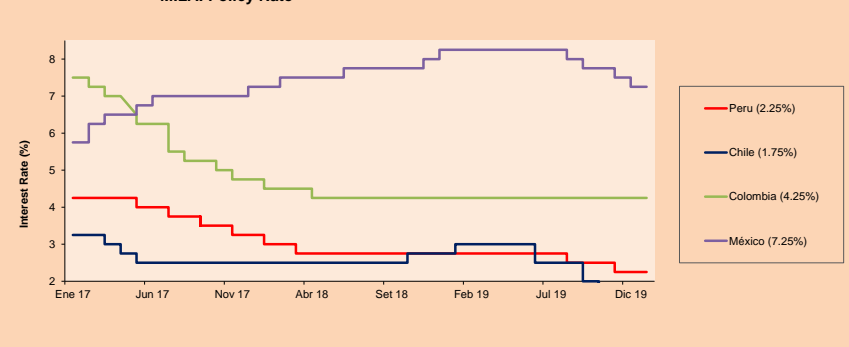


Base: 11/07/19=100 Source: Bloomberg

### ETFs

	Curr.	Close	1D	5D	30 D	YTD	Exchange
▼ iShares MSCI All Peru Caped Index Fund	USD	36.83	-0.41%	-0.59%	7.01%	-0.59%	NYSE Arca
▲ iShares MSCI Chile Capped	USD	34.085	1.04%	2.27%	4.56%	2.27%	Cboe BZX
▼ Global X MSCI Colombia	USD	14.005	-0.57%	0.76%	7.57%	0.76%	NYSE Arca
▼ iShares MSCI Mexico Capped	USD	45.7	-0.93%	1.49%	6.28%	1.49%	NYSE Arca
▼ iShares MSCI Emerging Markets	USD	44.79	-0.07%	-0.18%	3.99%	-0.18%	NYSE Arca
▼ Vanguard FTSE Emerging Markets	USD	44.62	-0.04%	0.34%	4.62%	0.34%	NYSE Arca
▼ iShares Core MSCI Emerging Markets	USD	53.7	0.00%	-0.11%	3.71%	-0.11%	NYSE Arca
▼ iShares JP Morgan Emerging Markets Bonds	USD	58.39	-0.12%	-0.46%	1.47%	-0.46%	Cboe BZX
▲ Morgan Stanley Emerging Markets Domestic	USD	7.04	0.28%	0.72%	3.99%	0.72%	New York

### MILA: Policy Rate



Source: Bloomberg

Capital Market Laboratory Coordinator: Economist Bruno Bellido Anicama  
Collaboration: Juan Carlos Figueroa, Alonso Butters, Jeanpierre León y Manuel Muñoz Najara  
e-mail: pulsobursatil@ulima.edu.pe  
facebook: www.facebook.com/pulsobursatil.ul  
Phone number : 4376767 Annex: 35340

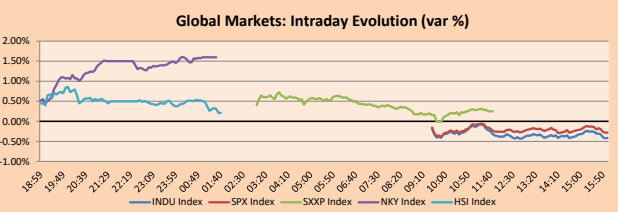


# PULSO BURSÁTIL

## WORLD

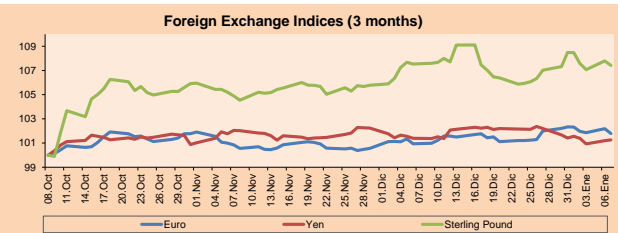
Main Indices	Close	1 D*	5 D*	1 M*	YTD*	Market Cap. (US\$ Mill.)
▼ Dow Jones (USA)	28,583.68	-0.42%	0.43%	2.03%	0.16%	8,220,837
▼ Standard & Poor's 500 (USA)	3,237.18	-0.28%	0.49%	2.90%	0.20%	27,999,336
▼ NASDAQ Composite (USA)	9,068.58	-0.03%	1.37%	4.76%	1.07%	14,051,080
▲ Stoxx EUROPE 600 (Europe)	417.67	0.25%	0.36%	2.53%	0.44%	10,098,218
▲ DAX (Germany)	13,226.83	0.76%	-0.83%	0.46%	-0.17%	1,103,605
▼ FTSE 100 (United Kingdom)	7,573.85	-0.02%	-0.17%	4.62%	0.42%	1,540,965
▼ CAC 40 (France)	6,012.35	-0.02%	0.50%	2.39%	0.57%	1,652,876
▼ IBEX 35 (Spain)	9,579.80	-0.22%	-0.34%	2.10%	0.32%	539,491
▲ MSCI AC Asia Pacific Index	169.81	0.84%	0.33%	3.79%	0.33%	20,510,435
▲ HANG SENG (Hong Kong)	28,322.06	0.34%	0.01%	6.88%	0.47%	2,651,045
▲ SHANGHAI SEC Comp. (China)	3,104.80	0.69%	2.13%	6.62%	1.73%	5,086,978
▲ NIKKEI 225 (Japan)	23,575.72	1.60%	-0.87%	0.95%	-0.34%	3,575,391
▲ BOVESPA (Brazil)	116,661.90	-0.18%	0.11%	4.98%	0.88%	908,414
▼ Merval (Argentina)	41,115.71	-0.85%	-1.36%	12.45%	-1.33%	23,774

\*Legend: Variation 1D: 1 Day; 5D: 5 Days; 1M: 1 Month; YTD: Var.% 12/31/18 to date



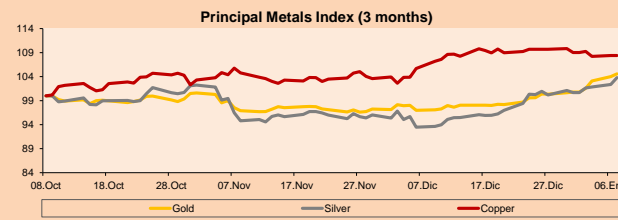
Currency	Price	1 D*	5 D*	1 M*	YTD*
▼ Euro	1.1147	-0.45%	-0.59%	0.79%	-0.59%
▼ Yen	108.4800	0.10%	-0.12%	-0.09%	-0.12%
▼ Sterling Pound	1.3119	-0.39%	-1.04%	-0.16%	-1.04%
▼ Yuan	6.9451	-0.42%	-0.26%	-1.28%	-0.26%
▲ Hong Kong Dollar	7.7789	0.12%	-0.16%	-0.65%	-0.16%
▲ Brazilian Real	4.0658	0.01%	1.02%	-1.77%	1.02%
▼ Argentine Peso	59.8120	0.00%	-0.10%	-0.23%	-0.10%

\*Legend: Variación 1D: 1 Día; 5D: 5 Días; 1M: 1 Mes; YTD: Var.% 31/12/17 a la fecha



Commodities	Close	1 D*	5 D*	1 M*	YTD*
▲ Oro (US\$ Oz. T) (LME)	1,574.08	0.53%	3.74%	7.80%	3.74%
▲ Plata (US\$ Oz. T) (LME)	18.40	1.36%	3.06%	11.00%	3.06%
▲ Cobres (US\$ TM) (LME)	6,114.50	0.00%	-0.56%	2.56%	-0.56%
▲ Zinc (US\$ TM) (LME)	2,334.50	0.00%	2.41%	4.10%	2.41%
▼ Petróleo WTI (US\$ Barril) (NYM)	62.81	-0.73%	2.87%	6.28%	2.87%
▼ Estano (US\$ TM) (LME)	16,854.00	0.00%	-1.89%	-1.50%	-1.89%
▼ Plomo (US\$ TM) (LME)	1,902.75	0.00%	-0.56%	1.49%	-0.56%
▼ Azúcar #11 (US\$ Libra) (NYB-ICE)	13.59	-1.02%	1.27%	3.11%	1.27%
▲ Cacao (US\$ TM) (NYB-ICE)	2,533.00	1.97%	-0.28%	-2.84%	-0.28%
▲ Café Arabica (US\$ TM) (NYB-ICE)	122.40	0.20%	-5.63%	-1.92%	-5.63%

\*Legend: Variación 1D: 1 Día; 5D: 5 Días; 1M: 1 Mes; YTD: Var.% 31/12/17 a la fecha



Source: Bloomberg

## Equity

Alemania (Acciones del DAX Index)				
Largest gains	Curr.	Price	▲%	Exchange
DBK GY	EUR	7.434	3.47	Xetra
HEI GY	EUR	65.16	2.49	Xetra
RWE GY	EUR	27.05	2.27	Xetra
GON GY	EUR	115.12	2.17	Xetra

Europe (Stocks from STOXX EUROPE 600)				
Largest gains	Curr.	Price	▲%	Exchange
BIM FP	EUR	85.25	5.70	EN Paris
IFX GY	EUR	21.04	4.96	Xetra
HFG GY	EUR	19.58	4.71	Xetra
AMS SE	CHF	41.03	4.67	SIX Swiss Ex

Largest losses	Curr.	Price	▼%	Exchange
VOW3 GY	EUR	176.06	-0.32	Xetra
BEI GY	EUR	105.75	-0.24	Xetra
WDI GY	EUR	111.85	0.00	Xetra
BAS GY	EUR	66.3	0.05	Xetra

Largest losses	Curr.	Price	▼%	Exchange
EKTAB SS	SEK	116.4	-4.00	Stockholm
PKN PW	PLN	82.3	-3.99	Warsaw
GLB ID	EUR	10.09	-3.72	EN Dublin
TLW LN	GBp	57.3	-3.67	Londres

## Global Overview:

### United States:

The US markets ended the day with negative variations, after Wall Street assessed the existence of increasing geopolitical risks from conflicts between the US and Iran. However, better than expected economic data were published. The Institute for Supply Management (ISM) announced that its non-manufacturing index increased to 55 in December, compared to 53.9 in November, which was considered a positive surprise. This reduced the losses already mentioned. On the other hand, market participants observe whether the situation will intensify with possible reprisals from Iranian forces. According to Adam Crisafulli, founder of Vital Knowledge, market players are no stranger to increases in tensions in the Middle East, but they are putting Iran's top military commander on the same scale as the recent Iranian attacks on Saudi oil assets. In addition, the reference yields of the 10-year and 2-year treasury treasury, as well as oil, slowly stabilizing the rises last sessions. Thus, the S&P 500 -0.28%, Dow Jones Industrial -0.42% and NASDAQ -0.03% ended down.

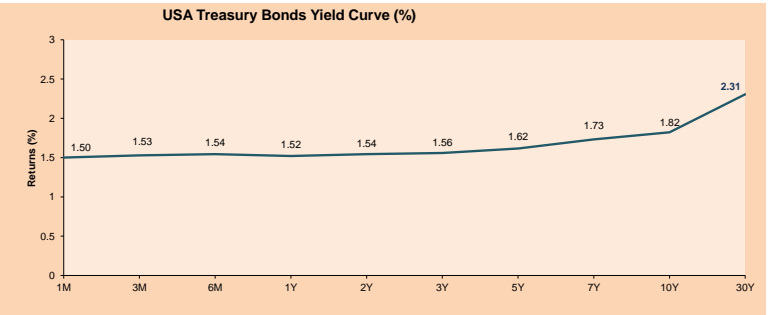
### Europe:

European markets ended the session with positive results, while fears and concerns related to geopolitical conflicts in the Middle East are calmed down. The market keeps pace with the recent situation between the US and Iran. Thus, after the tensions did not escalate to a new level, investors would be changing course back to the equity markets. Regarding Europe, in Spain, the socialist leader Pedro Sánchez controls the parliamentary support for his left-wing coalition government after almost 1 year of provisional governments and political stalemate. Regarding economic data, the inflation of the eurozone increased to 1.3% in December according to expectations, compared to 1% in November. However, it is expected that it will fall again in early 2020, according to Eurostat. Currently, the rate is below the objective of the European Central Bank closely, but below 2%. Thus, the STOXX 600 + 0.25%, AEX + 0.41%, FTSE MIB + 0.60%, DAX + 0.76% and BEL 20 + 0.33%, among other indices.

### Asia:

Asian markets closed the day with positive variations in their main indexes. Stock indices, Nikkei 225 (+1.60%), Hang seng (+0.34%), S & P / ASX 200 (+1.35%), Nifty 50 (+0.50%) and IDX Composite (+0.35%). On the other hand, a Chinese delegation that will be headed by Deputy Prime Minister Liu He will travel to the US on January 13 to sign the "phase one" of the trade agreement, which will serve as a basis to try to end the disputed between the two powers, according to the Hong Kong daily South China Morning post. In addition, according to said media that cited anonymous sources close to the negotiations, which explained that the delegation of China had planned to make this trip at the beginning of the month, but that it was postponed after US President Donald Trump, announce that the agreement will be signed on January 15. On the other hand, it was learned that the Chinese delegation plans to travel to Washington on January 13 to sign the anticipated phase one of a trade agreement with the United States, according to the South China Morning Post. Even Washington and Beijing have not officially confirmed Liu's visit.

ETFs	Curr.	Close	1D	5D	30 D	YTD	Exchange
SPDR S&P 500 ETF TRUST	USD	322.73	-0.28%	0.27%	2.50%	0.27%	NYSE Arca
ISHARES MSCI EMERGING MARKET	USD	44.79	-0.07%	-0.18%	3.99%	-0.18%	NYSE Arca
ISHARES IBOXX HIGH YLD CORP	USD	88.05	-0.09%	0.13%	1.29%	0.13%	NYSE Arca
FINANCIAL SELECT SECTOR SPDR	USD	30.53	-0.65%	-0.81%	0.56%	-0.81%	NYSE Arca
VANECK GOLD MINERS	USD	29.50	0.96%	0.75%	9.38%	0.75%	NYSE Arca
ISHARES RUSSELL 2000 ETF	USD	164.80	-0.33%	-0.53%	1.22%	-0.53%	NYSE Arca
SPDR GOLD SHARES	USD	147.97	0.39%	3.55%	7.52%	3.55%	NYSE Arca
ISHARES 20+ YEAR TREASURY BO	USD	137.65	-0.59%	1.60%	-0.51%	1.60%	NASDAQ GM
INVESCO QQQ TRUST SERIES 1	USD	215.53	-0.01%	1.37%	5.14%	1.37%	NASDAQ GM
ISHARES NASDAQ BIOTECHNOLOGY	USD	119.15	0.03%	-1.13%	-0.73%	-1.13%	NASDAQ GM
ENERGY SELECT SECTOR SPDR	USD	60.71	-0.26%	1.12%	1.66%	1.12%	NYSE Arca
PROSHARES ULTRA VIX ST FUTUR	USD	12.73	-0.70%	-1.24%	-15.81%	-1.24%	NYSE Arca
UNITED STATES OIL FUND LP	USD	13.13	-0.23%	2.50%	6.57%	2.50%	NYSE Arca
ISHARES MSCI BRAZIL ETF	USD	47.22	-0.06%	-0.48%	5.61%	-0.48%	NYSE Arca
SPDR S&P OIL & GAS EXP & PR	USD	24.48	1.20%	3.29%	15.31%	3.29%	NYSE Arca
UTILITIES SELECT SECTOR SPDR	USD	63.91	-0.14%	-1.10%	1.11%	-1.10%	NYSE Arca
ISHARES US REAL ESTATE ETF	USD	91.85	-1.01%	-1.32%	-1.22%	-1.32%	NYSE Arca
SPDR S&P BIOTECH ETF	USD	94.32	0.16%	-0.83%	-0.12%	-0.83%	NYSE Arca
ISHARES IBOXX INVESTMENT GRA	USD	127.91	-0.26%	-0.04%	0.19%	-0.04%	NYSE Arca
ISHARES JP MORGAN USD EMERGI	USD	114.36	0.16%	-0.17%	1.83%	-0.17%	NASDAQ GM
REAL ESTATE SELECT SECT SPDR	USD	38.09	-1.09%	-1.50%	-1.12%	-1.50%	NYSE Arca
ISHARES CHINA LARGE-CAP ETF	USD	44.01	-0.25%	0.87%	6.72%	0.87%	NYSE Arca
CONSUMER STAPLES SPDR	USD	62.03	-0.77%	-1.51%	-1.02%	-1.51%	NYSE Arca
VANECK JR GOLD MINERS	USD	42.65	1.67%	0.92%	12.15%	0.92%	NYSE Arca
SPDR BBG BARC HIGH YIELD BND	USD	109.75	-0.07%	0.19%	1.38%	0.19%	NYSE Arca
VANGUARD REAL ESTATE ETF	USD	91.35	-1.11%	-1.55%	-1.64%	-1.55%	NYSE Arca
GRAYSCALE BITCOIN TRUST BTC	#N/A Requesting D.	10.10	12.35%	23.32%	12.22%	23.32%	OTC US



Capital Market Laboratory Coordinator: Economist Bruno Bellido Anicama  
Collaboration: Alonso Butters, Jeanniere León y Manuel Muñoz Najar  
e-mail: pulsoburstatil@ulima.edu.pe  
facebook: www.facebook.com/pulsoburstatil  
Phone number: 4376767 Annex: 35340

# PULSO BURSÁTIL

## LIMA

### Stocks

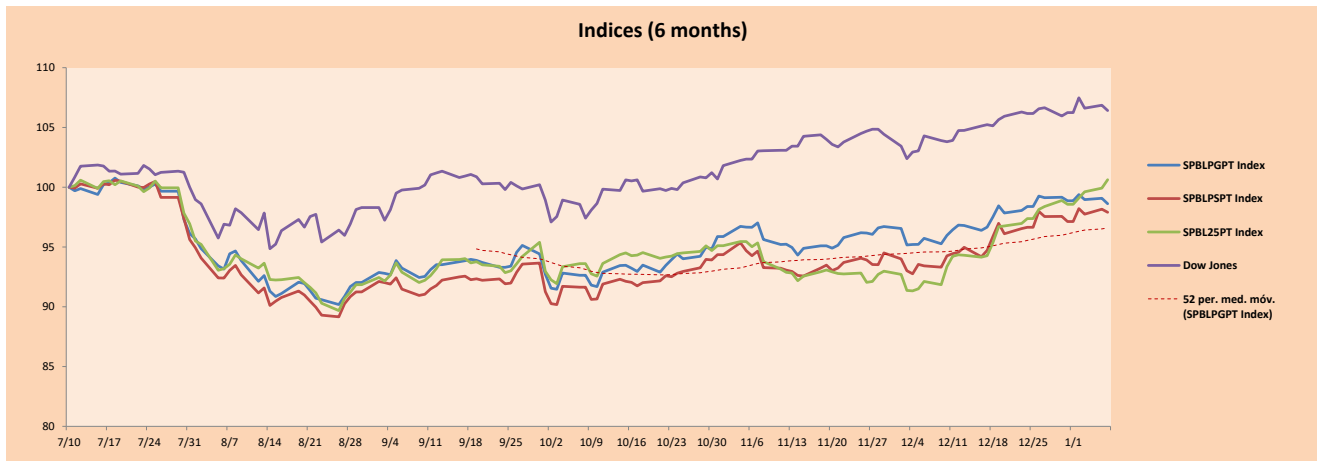
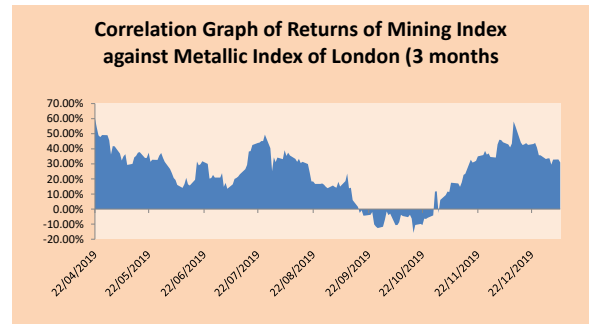
Ticker	Currency	Price	1D*	5D*	30D*	YTD*	Frequency	Volume (US\$)	Beta	Dividend Yield (%)	Price Earning	Market Cap. (M US\$)	Economic Sector*	Index Weight
▼ ALICORC1 PE**	S/.	9.13	-0.22%	-0.76%	6.91%	-0.76%	100.00%	320,897	0.72	2.63	17.55	2,343.11	Industrial	3.53%
▲ ATACOCB1 PE**	S/.	0.19	3.80%	15.76%	52.80%	15.76%	94.44%	16,654	0.00	-	54.33	-	Mining	1.02%
▲ BACKUSI1 PE**	S/.	30.01	0.03%	5.30%	9.93%	5.30%	66.67%	14,292	0.33	4.96	8.85	12,199.12	Industrial	0.82%
▼ BAP PE**	US\$	209.52	-2.47%	-1.49%	0.59%	-1.49%	94.44%	198,453	0.00	4.01	-	16,711.62	Diverse	5.82%
▲ BVN PE**	US\$	14.65	0.34%	-4.25%	-1.01%	-4.25%	83.33%	190,102	1.30	0.57	-	4,038.05	Mining	5.88%
▼ CASAGRC1 PE**	S/.	3.00	-3.23%	-0.99%	15.38%	-0.99%	100.00%	12,574	0.64	0.42	17.61	76.08	Agricultural	1.31%
▼ BBVAC1 PE**	S/.	3.42	-0.87%	-0.29%	0.59%	-0.29%	100.00%	19,699	0.52	4.03	12.55	6,059.55	Finance	2.85%
▲ CORAREI1 PE**	S/.	0.90	1.12%	-1.10%	7.14%	-1.10%	100.00%	25,887	0.86	7.31	4.37	366.36	Industrial	1.72%
- CPACASC1 PE**	S/.	6.10	0.00%	-0.81%	0.00%	-0.81%	94.44%	13,402	0.67	5.90	33.89	786.20	Industrial	2.38%
- CVERDEC1 PE**	US\$	19.40	0.00%	0.52%	9.60%	0.52%	88.89%	8,906	1.01	2.21	-	6,791.09	Mining	5.25%
- ENGEPEC1 PE**	S/.	2.30	0.00%	0.00%	-0.86%	0.00%	38.89%	1,891	0.54	0.00	12.51	1,965.66	Public Services	1.44%
- ENDISPC1**	S/.	7.15	0.00%	-2.72%	3.92%	-2.72%	50.00%	36,594	0.49	3.22	11.21	1,374.56	Public Services	0.98%
▲ FERREYC1 PE**	S/.	2.15	0.47%	-1.83%	1.42%	-1.83%	100.00%	81,466	0.91	4.77	8.07	631.54	Diverse	4.90%
▲ GRAMONC1 PE**	S/.	1.70	0.00%	0.00%	14.86%	0.00%	94.44%	354,371	1.03	0.00	-	446.25	Diverse	4.05%
▼ IFS PE**	US\$	41.65	-0.60%	1.83%	5.87%	1.83%	88.89%	431,078	0.94	4.20	12.02	4,808.40	Diverse	7.22%
- INRETC1 PE**	US\$	38.50	0.00%	6.94%	6.94%	6.94%	94.44%	2,536,419	0.88	31.13	3,958.08	-	Diverse	5.28%
▲ LUSURC1 PE**	S/.	26.00	0.74%	0.97%	8.33%	0.97%	100.00%	957,511	0.73	4.62	20.81	3,811.64	Public Services	1.81%
- MINSUR11 PE**	S/.	1.55	0.00%	-0.64%	9.15%	-0.64%	50.00%	233,321	1.08	4.89	6.83	1,345.33	Mining	3.09%
- PML PE**	US\$	0.07	0.00%	28.57%	-4.00%	28.57%	72.22%	21,655	1.18	0.00	-	19.00	Mining	2.12%
▲ RELAPAC1 PE**	S/.	0.13	1.61%	2.44%	36.96%	2.44%	100.00%	46,526	0.86	0.00	-	315.58	Industrial	2.12%
▲ SCCO PE**	US\$	41.71	0.36%	-1.70%	6.95%	-1.70%	94.44%	144,251	1.32	4.90	21.95	32,244.28	Mining	2.14%
▲ SIDERC1 PE**	S/.	0.88	1.15%	-1.12%	29.41%	-1.12%	100.00%	32,549	1.40	11.60	10.00	325.32	Industrial	1.43%
▲ TV PE**	US\$	0.18	4.57%	5.78%	23.65%	5.78%	83.33%	13,538	1.97	0.00	-	148.99	Mining	2.93%
- UNACEMC1 PE**	S/.	2.00	0.00%	0.00%	0.00%	0.00%	88.89%	12,111	0.69	2.60	10.16	1,094.73	Industrial	3.00%
▲ VOLCABC1 PE**	S/.	0.53	7.72%	19.10%	55.88%	19.10%	100.00%	3,918,428	1.51	0.00	-	2,106.06	Mining	5.90%
- NEXAPEC1 PE**	S/.	3.45	0.00%	0.00%	9.52%	0.00%	50.00%	57,304	0.89	0.00	33.57	1,373.45	Mining	1.56%

Quantity of shares: 26  
Source: Bloomberg, Económica  
\* Bloomberg Industry Classification System  
\*\* PER is used in the stock market and original currency of the instrument  
\*Legend: Variation 1D: 1 Day; 5D: 5 Days; 1M: 1 Month; YTD: Var.% 12/31/18 to date

### Sectorial Indices

	Close	1D*	5D*	30D*	YTD*	Beta
▲ Mining Index	300.62	0.60%	-1.33%	4.04%	-1.33%	1.31
▼ Consumer Index	1,180.94	-0.16%	3.57%	6.69%	3.57%	0.43
▲ Industrial Index	209.48	0.32%	-0.78%	3.59%	-0.78%	0.65
▼ Banking and Financial Index	1,168.46	-2.37%	-0.95%	-0.60%	-0.95%	1.27
▲ Construction Index	225.80	0.24%	-0.37%	4.13%	-0.37%	0.54
▲ Services Index	652.58	0.26%	0.16%	3.93%	0.16%	0.30
▼ Juniors Index	15.75	-0.57%	8.85%	0.38%	8.85%	0.11
▲ Electric Index	637.08	0.26%	0.16%	3.92%	0.16%	0.30

\*Legend: Variation 1D: 1 Day; 5D: 5 Days; 1M: 1 Month; YTD: Var.% 12/31/18 to date



Source: Bloomberg

Capital Market Laboratory Coordinador: Economist Bruno Bellido Anicama  
Collaboration: Juan Carlos Figueroa, Alonso Butter, Jeanpiere León y Manuel Muñoz Najjar  
e-mail: pulsobursatil@ulima.edu.pe  
facebook: www.facebook.com/pulsobursatil.ul  
Phone number : 4376767 Annex: 35340

The content of this document is just for informational purposes. The information and opinions expressed should not be consider as recommendations for future decisions. Under any circumstances, the Capital Market Laboratory of University of Lima will be responsible for the use of the statements in this document.

# PULSO BURSÁTIL

## SOVEREIGN RATING

### RISK RATINGS

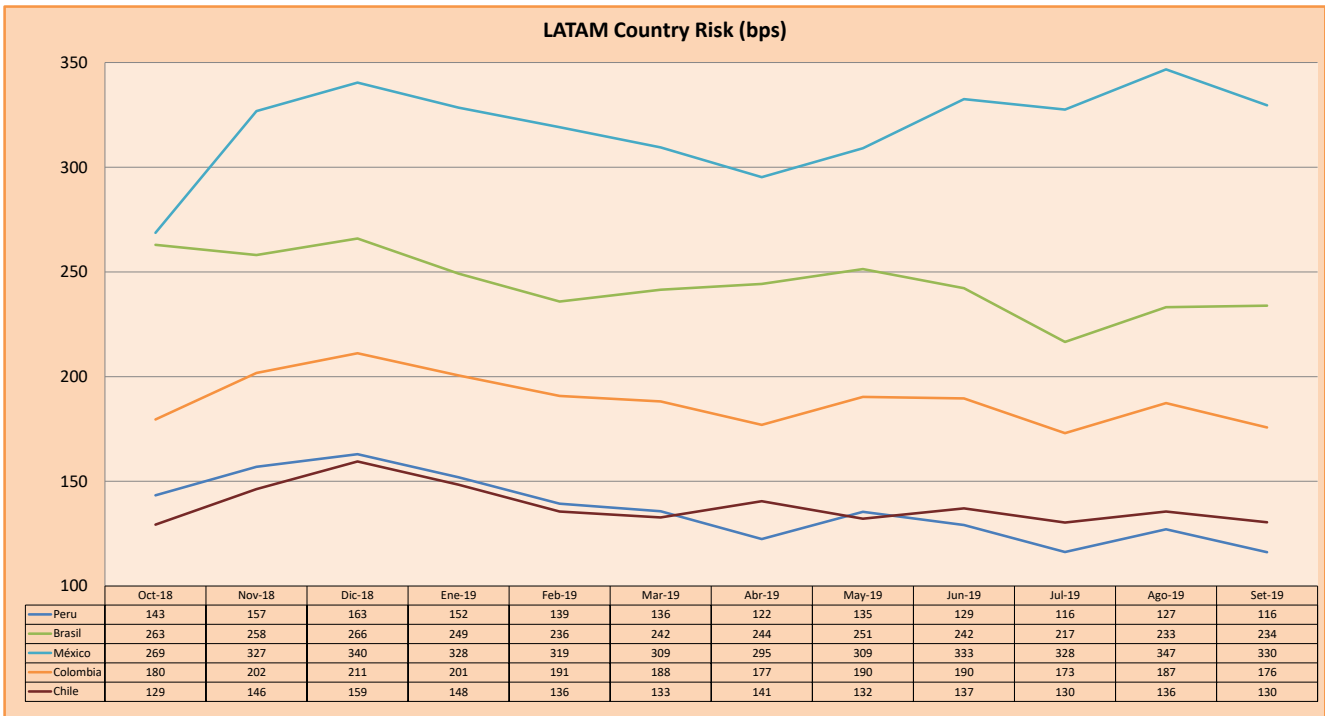
Moody's	S&P	Fitch		
Aaa	AAA	AAA	Prime	
Aa1	AA+	AA+	High credit quality	
Aa2	AA	AA		
Aa3	AA-	AA-		
A1	A+	A+	Medium-high grade, with low credit risk	
A2	A	A		
A3	A-	A-		
Baa1	BBB+	BBB+	Moderate Credit Risk	
Baa2	BBB	BBB		
Baa3	BBB-	BBB-		
Ba1	BB+	BB+	It has speculative elements and it is subject to substantial credit risk	
Ba2	BB	BB		
Ba3	BB-	BB-		
B1	B+	B+	It is considered speculative and it has high credit risk	
B2	B	B		
B3	B-	B-		
Caa1	CCC+	CCC	Bad credit conditions and it is subject to high credit risk	
Caa2	CCC			
Caa3	CCC-			
Ca	C	DDD	Very close to default or in default	
C	D			DD
				D

Source: Bloomberg

Latin America Credit Rating			
Clasificadora de riesgo			
Country	Moody's	Fitch	S&P
Peru	A3	BBB+	BBB+
Mexico	A3	BBB	BBB+
Venezuela	C	WD	SD
Brazil	Ba2	BB-	BB-
Colombia	Baa2	BBB	BBB-
Chile	A1	A	A+
Argentina	Caa2 *	CC	CCC-
Panama	Baa1	BBB	BBB+

Source: Bloomberg

### LATAM Country Risk (bps)



Source: BCRP

Capital Market Laboratory Coordinator: Economist Bruno Bellido Anicama  
 Support: Juan Carlos Figueroa, Alonso Butters, Jeanpiere León y Manuel Muñoz Najara  
 e-mail: pulsobursatil@ulima.edu.pe  
 facebook: www.facebook.com/pulsobursatil.ul  
 Phone number : 4376767 Annex: 35340

The content of this document is just for informational purposes. The information and opinions expressed should not be considered as recommendations for future decisions. Under any circumstances, the Capital Market Laboratory of University of Lima will be responsible for the use of the statements in this document.